



Clove

Unity
Gardens
AT CASTLE HILL

Welcome to Unity Gardens

A GROWING NEIGHBOURHOOD

As part of the village of Castle Hill, Unity Gardens will soon provide all the essentials for daily life. There's already a community centre attached to the primary school, and The Spring River is a bright, airy pub and restaurant, with carvery, outdoor playground and free WiFi.





Clove



Computer Generated Image of Clove

You're looking for a home that combines the very best qualities of town and country. You want endless fresh air and beautiful outdoor space – but not to be so far from the city that commuting eats into your precious time.

You want fantastic amenities on your doorstep, from world-class shopping to high-speed trains, yet wake each morning in a place where you can hear birds singing along the tree-lined avenues. And you need it available in a way that's easy to afford, bringing the dream of owning your own property finally within reach.

You've found all this and more at Unity Gardens.



Key

- Clove
- Future Phases
- Previous Phases

APARTMENT Type A

Two Bedroom
Plots 47, 50, 53 & 56

Living/Dining	7.09m x 3.27m	23'3" x 10'8"
Kitchen	3.30m x 3.16m	10'9" x 10'4"
Bedroom 1	3.69m x 3.34m	12'0" x 10'11"
Bedroom 2	3.69m x 3.21m	12'0" x 10'6"
Total Internal Area	70 sq m	753 sq ft

Total area of apartments may vary.

APARTMENT Type B

One Bedroom
Plot 48

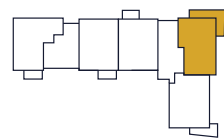
Living/Dining	6.03m x 4.91m	19'9" x 16'0"
Kitchen	3.00m x 2.56m	9'10" x 8'4"
Bedroom 1	3.82 x 3.57m	12'6" x 11'8"
Total Internal Area	56 sq m	602 sq ft



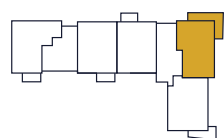
Balcony size varies to plots 50, 53 & 56.



1, 2, & 3



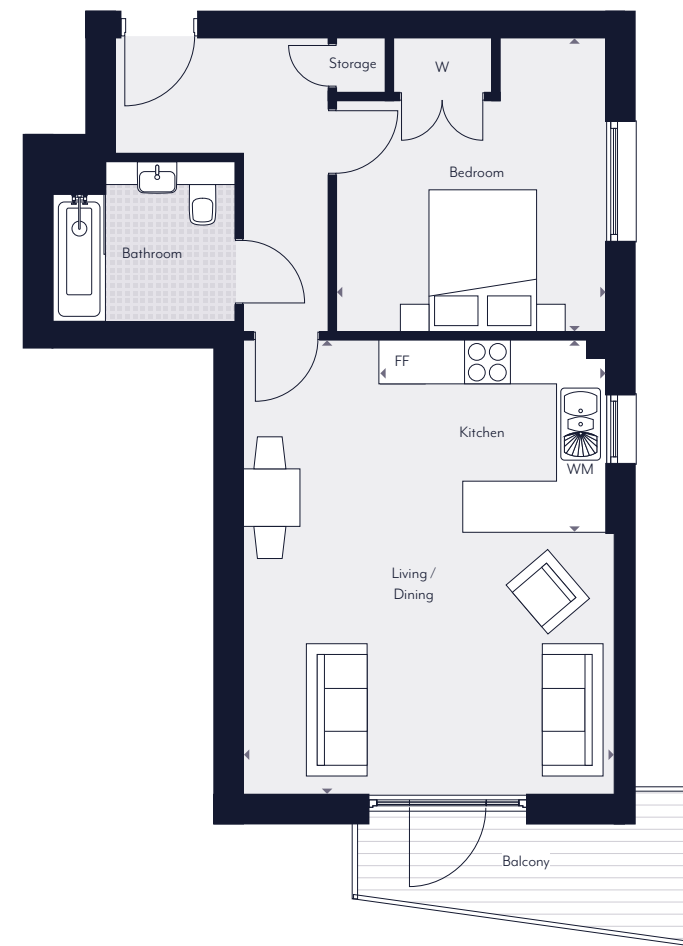
Ground



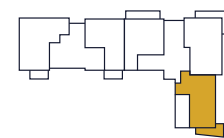
Key

◀▶ Measurement Points WM Integrated Washing Machine FF Integrated Fridge/Freezer W Wardrobe

Note: These dimensions are accurate to within +/- 50mm. They are not intended to be used for carpet sizes, appliance spaces or items of furniture. Balconies may vary in size.



Ground



Key

◀▶ Measurement Points WM Integrated Washing Machine FF Integrated Fridge/Freezer W Wardrobe

Note: These dimensions are accurate to within +/- 50mm. They are not intended to be used for carpet sizes, appliance spaces or items of furniture. Balconies may vary in size.

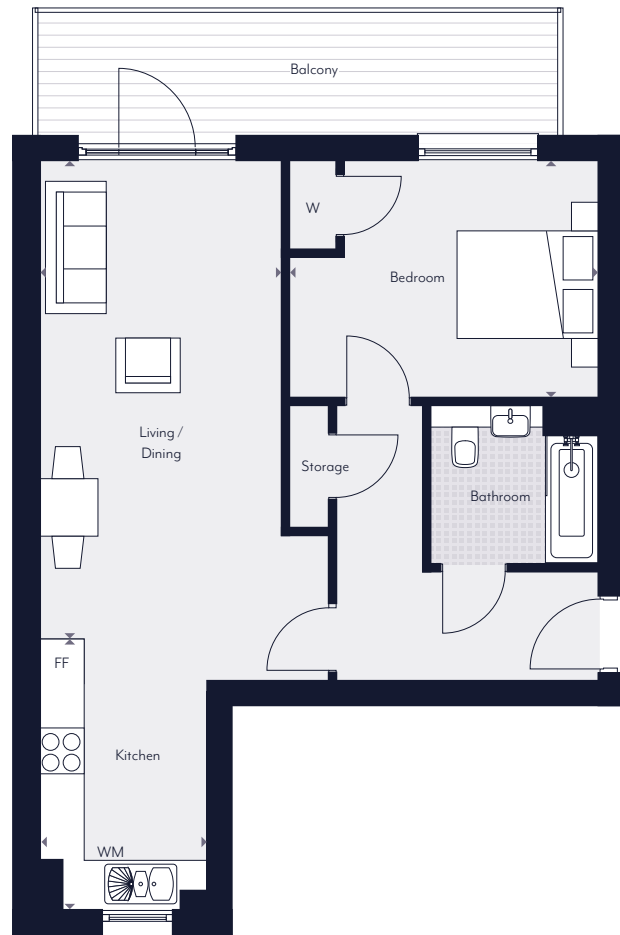
APARTMENT

Type C

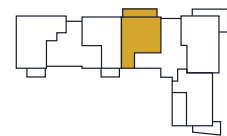
One Bedroom

Plot 46

Living/Dining	6.31m x 3.19m	20'8" x 10'5"
Kitchen	3.60m x 2.20m	11'9" x 7'2"
Bedroom 1	4.10m x 3.10m	13'4" x 10'9"
Total Internal Area	57 sq m	613 sq ft



Ground



Key

◀▶ Measurement Points WM Integrated Washing Machine FF Integrated Fridge/Freezer W Wardrobe

Note: These dimensions are accurate to within +/- 50mm. They are not intended to be used for carpet sizes, appliance spaces or items of furniture. Balconies may vary in size.

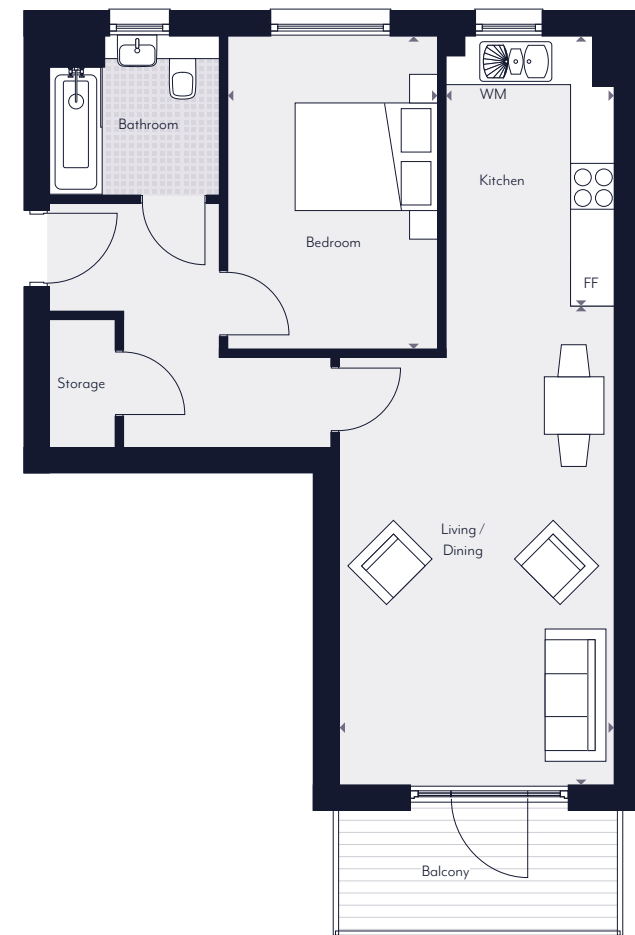
APARTMENT

Type D

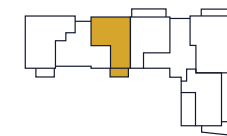
One Bedroom

Plot 39

Living/Dining	6.31m x 3.66m	20'8" x 11'11"
Kitchen	3.60m x 2.25m	11'9" x 7'4"
Bedroom 1	4.14m x 2.78m	13'6" x 9'1"
Total Internal Area	56 sq m	602 sq ft



Ground



Key

◀▶ Measurement Points WM Integrated Washing Machine FF Integrated Fridge/Freezer

Note: These dimensions are accurate to within +/- 50mm. They are not intended to be used for carpet sizes, appliance spaces or items of furniture. Balconies may vary in size.

APARTMENT

Type E

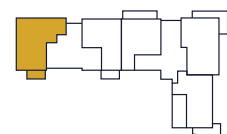
Two Bedroom

Plots 38, 40, 42 & 44

Living/Dining	5.63m x 3.41m	18'5" x 11'1"
Kitchen	3.01m x 2.60m	9'10" x 8'6"
Bedroom 1	3.96m x 3.01m	12'11" x 9'10"
Bedroom 2	3.85m x 3.13m	12'7" x 10'2"
Total Internal Area	71 sq m	764 sq ft



Ground, 1, 2 & 3



Key

- ◀▶ Measurement Points
- WM Integrated Washing Machine
- FF Integrated Fridge/Freezer

Note: These dimensions are accurate to within +/- 50mm. They are not intended to be used for carpet sizes, appliance spaces or items of furniture. Balconies may vary in size.

APARTMENT

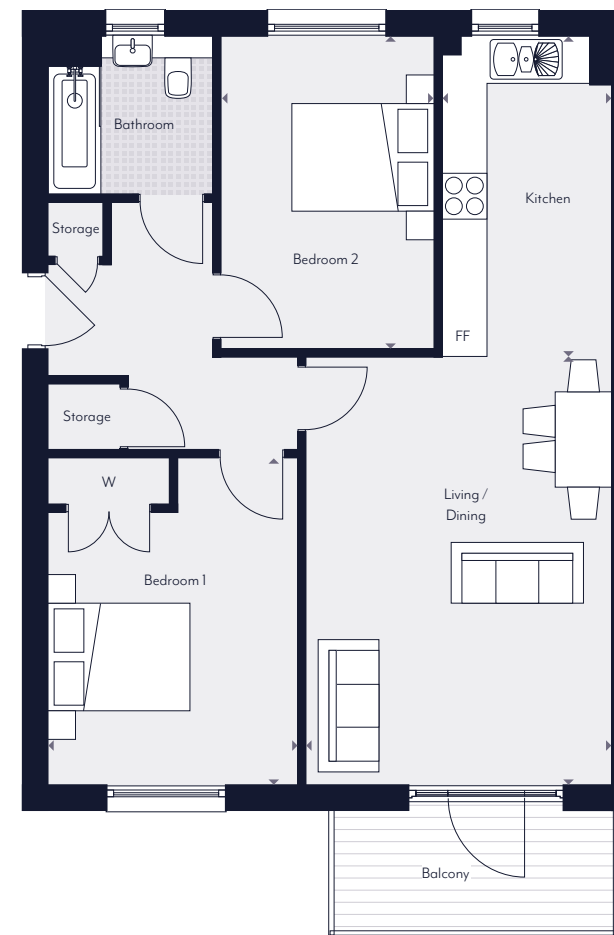
Type F

Two Bedroom

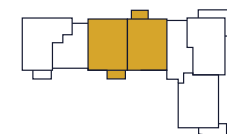
Plots 41, 43, 45, 49, 52 & 55

Living/Dining	5.66m x 4.05m	18'6" x 13'3"
Kitchen	4.25m x 2.25m	13'10" x 7'4"
Bedroom 1	4.31m x 3.25m	14'1" x 10'7"
Bedroom 2	4.14m x 2.78m	13'7" x 9'1"
Total Internal Area	72 sq m	775 sq ft

Total area of apartments may vary.



1, 2, & 3



Key

- ◀▶ Measurement Points
- FF Integrated Fridge/Freezer
- W Wardrobe

Note: These dimensions are accurate to within +/- 50mm. They are not intended to be used for carpet sizes, appliance spaces or items of furniture. Balconies may vary in size.

APARTMENT

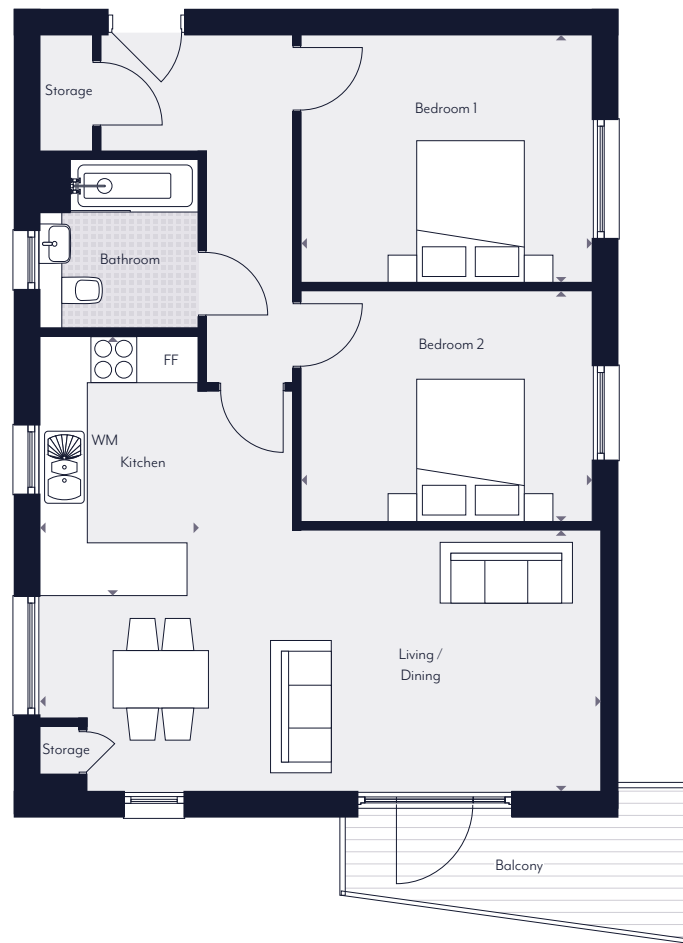
Type G

Two Bedroom

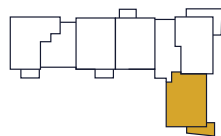
Plots 51, 54 & 57

Living/Dining	7.43m x 3.46m	24'4" x 11'4"
Kitchen	3.41m x 1.97m	11'2" x 6'5"
Bedroom 1	3.86m x 3.24m	12'8" x 10'7"
Bedroom 2	3.86m x 3.04m	12'8" x 9'11"
Total Internal Area	73 sq m	785 sq ft

Total area of apartments may vary.



1, 2, & 3



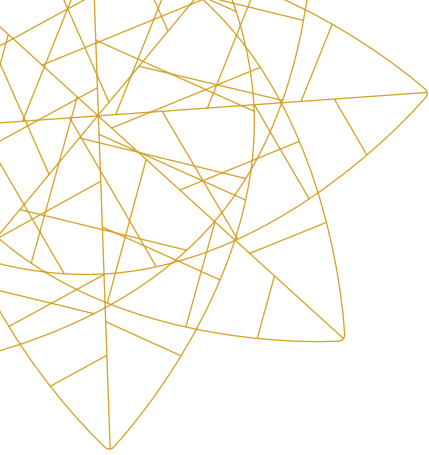
Key

◀▶ Measurement Points WM Integrated Washing Machine FF Integrated Fridge/Freezer

Note: These dimensions are accurate to within +/- 50mm. They are not intended to be used for carpet sizes, appliance spaces or items of furniture. Balconies may vary in size.



Generated Image of Internal Showhome at Unity Gardens



Specification

General

- White 6 panel textured internal doors throughout
 - Grey aluminium windows and external French doors
 - Chrome door viewer, door numbers, door chain and letterbox
 - Smoke and Carbon Monoxide Detectors
 - Air management system in kitchen and bathrooms
 - Ideal Logic ESPI Boiler
 - Deta slimline electrical accessories and gang switches
 - Carpeted rooms throughout bedroom, hallway, landing, living and dining areas
- Integrated fridge freezer
 - 1 ½ bowl stainless steel inset sink and single drainer with chrome tap
 - Porcelanosa Nast Caliza flooring

Bathroom

- Roca bathroom suite
- Glass shower screen
- Heated towel rail
- Porcelanosa Nast Caliza flooring
- Porcelanosa Madagascar Neutral Wall Tiling

Kitchen

- Dark Ash worktop and upstand with brushed nickel handles
- Stainless steel splashback
- Stainless steel electric oven with gas hob
- Stainless steel cooker hood
- Integrated washing machine

*Please note that the make and colour of the kitchen will vary. Speak to a sales executive for more information.





CLARION
HOUSING



unitygardens.co.uk