

Introducing Maple House - The Apartments



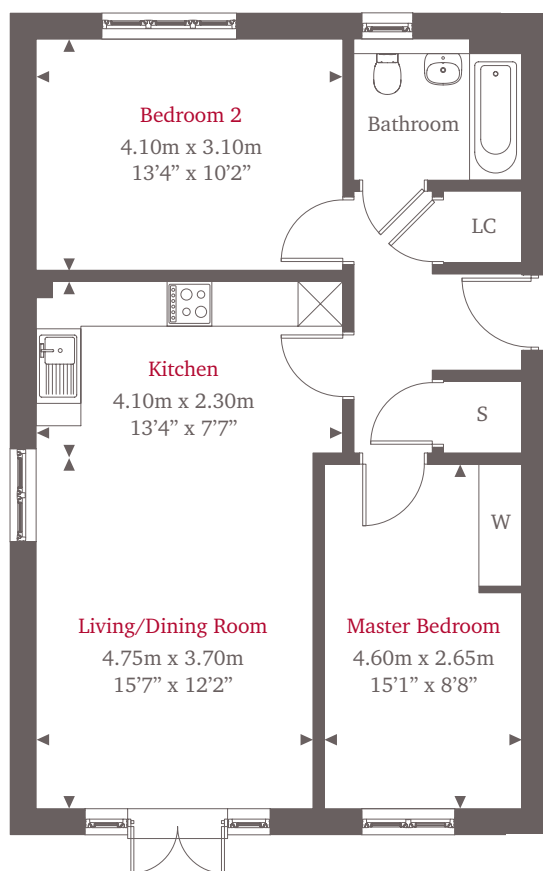
Internal photography indicative only

Plots 3 + 5 2 bedroom apartment

Shanly Homes is extremely proud to present Maple House at Great Oaks, a fine collection of just five Shared Partnership 2 bedroom apartments set within a development of exquisite new homes in the sought-after village of Bookham in Surrey.

Plots 3 & 5 are located on the ground and first floors of Maple House and provide the very best of contemporary living, with an open-plan kitchen/living/dining room, fitted with quality integrated appliances and enjoying large French doors which open onto a private balcony or terrace.

The Master bedroom is complete with a large fitted wardrobe and outside there is a private allocated parking space.



For more information please call **01372 225007**
shanlypartnership.com

◀ Point from which maximum dimensions are measured. Dimensions are intended for guidance only and may vary by plus or minus 7.6cm/3". The plots indicate general layout only which may vary from other plots. Kitchen and bathroom layouts indicative only. W denotes wardrobe. S denotes storage. LC denotes linen cupboard. Please contact sales consultant for more information.

SHANLY
PARTNERSHIP
— HOMES —