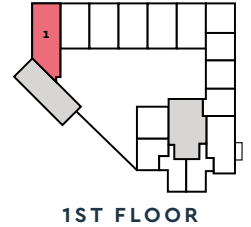
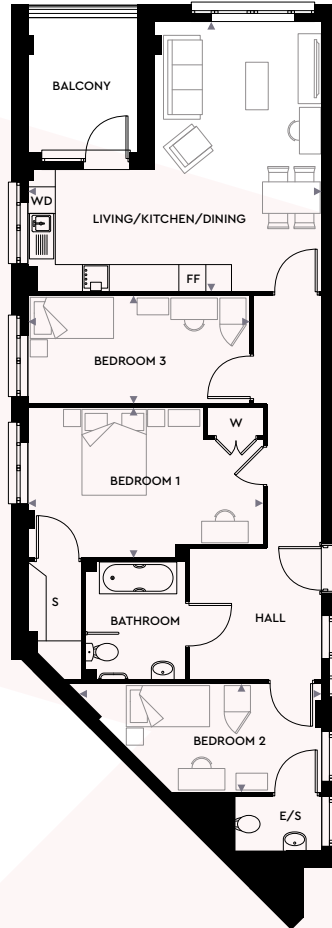


THREE BEDROOM APARTMENTS

APARTMENT 1



GROSS INTERNAL AREA: 70.0 SQ. M. | 753.4 SQ. FT.

LIVING/KITCHEN/DINING

6.51M X 5.93M | 21'3" X 19'4"

BEDROOM 1

5.21M X 3.28M | 17'0" X 10'7"

BEDROOM 2

5.58M X 2.40M | 18'3" X 7'8"

BEDROOM 3

4.91M X 2.40M | 16'1" X 7'8"

FF – Fridge Freezer S – Storage Cupboard W – Wardrobe WD – Washer/Dryer

The floorplans provided are intended to only give a general indication of the proposed floor layout, are not drawn to scale and are not intended to form part of any offer, contract, warranty or representation. Measurements are given to the widest point, are approximate and are given as a guide only. They must not be relied upon as a statement or representation of fact. Do not use these measurements for carpet sizes, appliance spaces or items of furniture. Kitchen, bathroom and utility layouts may differ to build, and specific plot sizes and layouts may vary within the same unit type. For further clarification regarding specific individual plots, please ask our Sales Advisors. October 2020



INSPIRED BY YOU
BUILT FOR YOU

SPECIFICATION

KITCHEN

- Contemporary gloss handleless kitchen from Symphony with Dusk Grey base and larder units and Pearl Grey wall units
- Silestone Rogui colour quartz worktops with matching upstand and cashmere coloured glass splashback in behind hob
- Supra single bowl undermounted stainless steel sink with square dual-lever chrome mixer tap
- Bosch integrated appliances including:
 - induction hob with TouchSelect and PowerBoost functions
 - multifunction oven with LED display and pop-out controls
 - stainless steel pyramid chimney extractor hood
- Zanussi integrated appliances including:
 - dishwasher
 - fridge/freezer
 - washer dryer
- LED strip lights to underside of wall units

BATHROOM

- Large format porcelain tiles in Raven grey to floor
- Large format porcelain tiles in Slate grey to boxing behind basin and WC, to skirting and full-height around bath
- Contemporary bath in white with curved glass shower screen and bath panel in white
- Vado chrome thermostatic bath and shower mixer tap with matching shower attachment, slider and rail
- Vitra semi-recessed basin with half pedestal and Grohe chrome mixer tap
- Vitra back-to-wall WC with soft-close seat, concealed cistern and polished chrome flush plate
- Chrome ladder heated towel radiator
- Bespoke three-door mirrored vanity above basin with internal shaver socket

EN SUITE*

- Large format porcelain tiles in Raven grey to floor
- Large format porcelain tiles in Slate grey to splashback behind basin, to skirting and full-height around shower enclosure (selected apartments only)
- Vitra semi-pedestal basin with Grohe chrome mixer tap
- Vitra close-coupled WC
- Shower tray featuring Ideal Standard bi-fold door and Bristan wall-mounted shower attachment, slider and rail (selected apartments only)

BEDROOM

- Regency Cabaret carpet in Nickel grey colour
- Built-in wardrobe to master bedroom with full-height satin white doors, with mirror to the inside of one door, upper storage area and hanging rail

ELECTRICAL

- LED downlighters in white to open-plan living/kitchen/dining, bathroom, en suite and hallway
- Pendant light to bedroom(s)
- Brushed stainless steel switches and sockets throughout
- Phone and data points to living room and bedroom one
- TV and satellite connection point to living room pre-wired for SkyQ
- TV connection point to first and second bedroom

INTERIOR FINISHES

- Oak wood-effect laminate to open-plan living/kitchen/dining and hallway
- Satin finish chrome ironmongery throughout
- White satin paint finish to joinery throughout
- White matt emulsion paint finish to walls and ceilings throughout

SECURITY & PEACE OF MIND

- Front entrance door with multipoint locking system, security chain and door viewer
- Entrotec audio/visual door entry system
- Mains operated smoke, heat and carbon monoxide detectors with battery backup
- 12-year LABC warranty

HEATING

- Heating and hot water provided by a combined heat and power (CHP) system
- Honeywell programmable thermostat

ENERGY EFFICIENCY

- Energy Performance Certificate (EPC) rating between 83 and 86 (B)
- Built to latest Building Regulation standards
- Aluminium-framed double-glazed windows

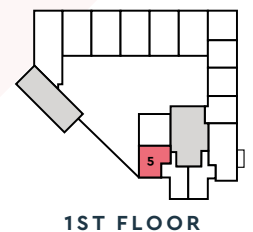
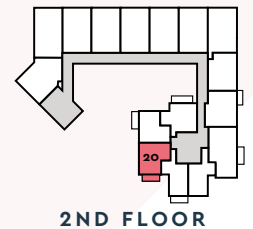
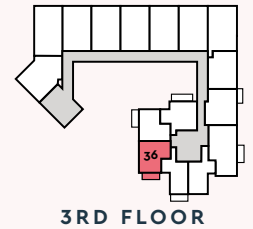
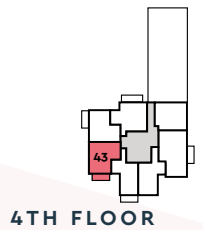
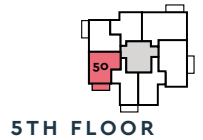
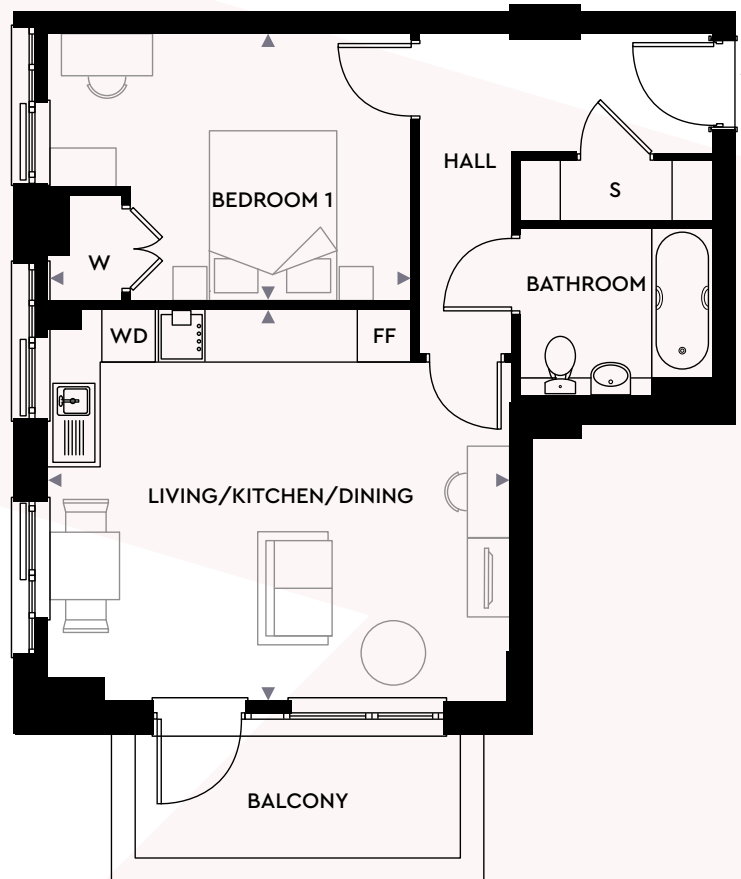
EXTERIOR

- Balconies to selected apartments:
 - Inset balconies with paving slab to floor
 - Cantilever balconies with timber decking to floor
- Secure residents' cycle store
- First floor communal space for use by all residents, with AstroTurf, paving and landscaping, children's play equipment and timber seating
- Fourth floor roof garden for use by all residents, with paving, landscaping and stone seating

*Refer to floorplans for information on apartments with en suites. The above specification shown is for general guidance and is subject to change due to Optivo's policy of continuous improvement. The finished product may vary from the information provided. On-site parking is specifically allocated to selected properties and cannot be changed or transferred. Please speak to our Sales Advisor for more details. *Refer to floorplans for information on apartments with en suites. October 2020.

ONE BEDROOM APARTMENTS

APARTMENTS 5, 20, 36, 43 & 50



GROSS INTERNAL AREA: 50.0 SQ. M. | 538.1 SQ. FT.

LIVING/KITCHEN/DINING

5.30M X 4.46M | 17'3" X 14'6"

BEDROOM 1

4.16M X 3.06M | 13'6" X 10'0"

FF – Fridge Freezer S – Storage Cupboard W – Wardrobe WD – Washer/Dryer

The floorplans provided are intended to only give a general indication of the proposed floor layout, are not drawn to scale and are not intended to form part of any offer, contract, warranty or representation. Measurements are given to the widest point, are approximate and are given as a guide only. They must not be relied upon as a statement or representation of fact. Do not use these measurements for carpet sizes, appliance spaces or items of furniture. Kitchen, bathroom and utility layouts may differ to build, and specific plot sizes and layouts may vary within the same unit type. For further clarification regarding specific individual plots, please ask our Sales Advisors. October 2020



INSPIRED BY YOU
BUILT FOR YOU

SPECIFICATION

KITCHEN

- Contemporary gloss handleless kitchen from Symphony with Dusk Grey base and larder units and Pearl Grey wall units
- Silestone Rogui colour quartz worktops with matching upstand and cashmere coloured glass splashback in behind hob
- Supra single bowl undermounted stainless steel sink with square dual-lever chrome mixer tap
- Bosch integrated appliances including:
 - induction hob with TouchSelect and PowerBoost functions
 - multifunction oven with LED display and pop-out controls
 - stainless steel pyramid chimney extractor hood
- Zanussi integrated appliances including:
 - dishwasher
 - fridge/freezer
 - washer dryer
- LED strip lights to underside of wall units

BATHROOM

- Large format porcelain tiles in Raven grey to floor
- Large format porcelain tiles in Slate grey to boxing behind basin and WC, to skirting and full-height around bath
- Contemporary bath in white with curved glass shower screen and bath panel in white
- Vado chrome thermostatic bath and shower mixer tap with matching shower attachment, slider and rail
- Vitra semi-recessed basin with half pedestal and Grohe chrome mixer tap
- Vitra back-to-wall WC with soft-close seat, concealed cistern and polished chrome flush plate
- Chrome ladder heated towel radiator
- Bespoke three-door mirrored vanity above basin with internal shaver socket

EN SUITE*

- Large format porcelain tiles in Raven grey to floor
- Large format porcelain tiles in Slate grey to splashback behind basin, to skirting and full-height around shower enclosure (selected apartments only)
- Vitra semi-pedestal basin with Grohe chrome mixer tap
- Vitra close-coupled WC
- Shower tray featuring Ideal Standard bi-fold door and Bristan wall-mounted shower attachment, slider and rail (selected apartments only)

BEDROOM

- Regency Cabaret carpet in Nickel grey colour
- Built-in wardrobe to master bedroom with full-height satin white doors, with mirror to the inside of one door, upper storage area and hanging rail

ELECTRICAL

- LED downlighters in white to open-plan living/kitchen/dining, bathroom, en suite and hallway
- Pendant light to bedroom(s)
- Brushed stainless steel switches and sockets throughout
- Phone and data points to living room and bedroom one
- TV and satellite connection point to living room pre-wired for SkyQ
- TV connection point to first and second bedroom

INTERIOR FINISHES

- Oak wood-effect laminate to open-plan living/kitchen/dining and hallway
- Satin finish chrome ironmongery throughout
- White satin paint finish to joinery throughout
- White matt emulsion paint finish to walls and ceilings throughout

SECURITY & PEACE OF MIND

- Front entrance door with multipoint locking system, security chain and door viewer
- Entrotec audio/visual door entry system
- Mains operated smoke, heat and carbon monoxide detectors with battery backup
- 12-year LABC warranty

HEATING

- Heating and hot water provided by a combined heat and power (CHP) system
- Honeywell programmable thermostat

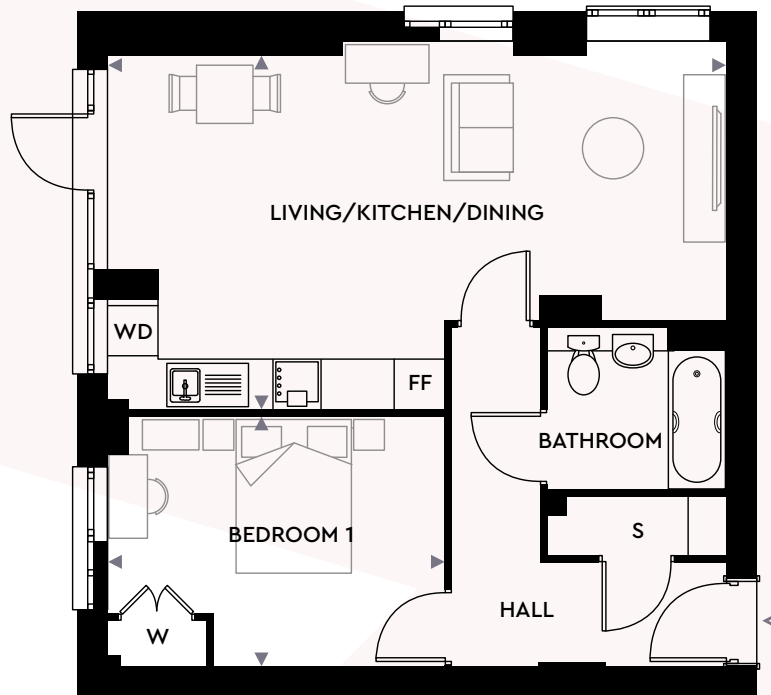
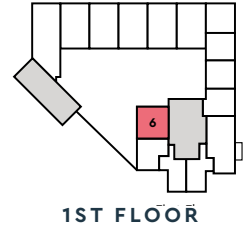
ENERGY EFFICIENCY

- Energy Performance Certificate (EPC) rating between 83 and 86 (B)
- Built to latest Building Regulation standards
- Aluminium-framed double-glazed windows

EXTERIOR

- Balconies to selected apartments:
 - Inset balconies with paving slab to floor
 - Cantilever balconies with timber decking to floor
- Secure residents' cycle store
- First floor communal space for use by all residents, with AstroTurf, paving and landscaping, children's play equipment and timber seating
- Fourth floor roof garden for use by all residents, with paving, landscaping and stone seating

*Refer to floorplans for information on apartments with en suites. The above specification shown is for general guidance and is subject to change due to Optivo's policy of continuous improvement. The finished product may vary from the information provided. On-site parking is specifically allocated to selected properties and cannot be changed or transferred. Please speak to our Sales Advisor for more details. *Refer to floorplans for information on apartments with en suites. October 2020.



GROSS INTERNAL AREA: 58.0 SQ. M. | 624.3 SQ. FT.

LIVING/KITCHEN/DINING

7.61M X 4.50M | 24'9" X 14'7"

BEDROOM 1

4.16M X 3.13M | 13'6" X 10'2"

FF – Fridge Freezer S – Storage Cupboard W – Wardrobe WD – Washer/Dryer

The floorplans provided are intended to only give a general indication of the proposed floor layout, are not drawn to scale and are not intended to form part of any offer, contract, warranty or representation. Measurements are given to the widest point, are approximate and are given as a guide only. They must not be relied upon as a statement or representation of fact. Do not use these measurements for carpet sizes, appliance spaces or items of furniture. Kitchen, bathroom and utility layouts may differ to build, and specific plot sizes and layouts may vary within the same unit type. For further clarification regarding specific individual plots, please ask our Sales Advisors. October 2020



INSPIRED BY YOU
BUILT FOR YOU

SPECIFICATION

KITCHEN

- Contemporary gloss handleless kitchen from Symphony with Dusk Grey base and larder units and Pearl Grey wall units
- Silestone Rogui colour quartz worktops with matching upstand and cashmere coloured glass splashback in behind hob
- Supra single bowl undermounted stainless steel sink with square dual-lever chrome mixer tap
- Bosch integrated appliances including:
 - induction hob with TouchSelect and PowerBoost functions
 - multifunction oven with LED display and pop-out controls
 - stainless steel pyramid chimney extractor hood
- Zanussi integrated appliances including:
 - dishwasher
 - fridge/freezer
 - washer dryer
- LED strip lights to underside of wall units

BATHROOM

- Large format porcelain tiles in Raven grey to floor
- Large format porcelain tiles in Slate grey to boxing behind basin and WC, to skirting and full-height around bath
- Contemporary bath in white with curved glass shower screen and bath panel in white
- Vado chrome thermostatic bath and shower mixer tap with matching shower attachment, slider and rail
- Vitra semi-recessed basin with half pedestal and Grohe chrome mixer tap
- Vitra back-to-wall WC with soft-close seat, concealed cistern and polished chrome flush plate
- Chrome ladder heated towel radiator
- Bespoke three-door mirrored vanity above basin with internal shaver socket

EN SUITE*

- Large format porcelain tiles in Raven grey to floor
- Large format porcelain tiles in Slate grey to splashback behind basin, to skirting and full-height around shower enclosure (selected apartments only)
- Vitra semi-pedestal basin with Grohe chrome mixer tap
- Vitra close-coupled WC
- Shower tray featuring Ideal Standard bi-fold door and Bristan wall-mounted shower attachment, slider and rail (selected apartments only)

BEDROOM

- Regency Cabaret carpet in Nickel grey colour
- Built-in wardrobe to master bedroom with full-height satin white doors, with mirror to the inside of one door, upper storage area and hanging rail

ELECTRICAL

- LED downlighters in white to open-plan living/kitchen/dining, bathroom, en suite and hallway
- Pendant light to bedroom(s)
- Brushed stainless steel switches and sockets throughout
- Phone and data points to living room and bedroom one
- TV and satellite connection point to living room pre-wired for SkyQ
- TV connection point to first and second bedroom

INTERIOR FINISHES

- Oak wood-effect laminate to open-plan living/kitchen/dining and hallway
- Satin finish chrome ironmongery throughout
- White satin paint finish to joinery throughout
- White matt emulsion paint finish to walls and ceilings throughout

SECURITY & PEACE OF MIND

- Front entrance door with multipoint locking system, security chain and door viewer
- Entrotec audio/visual door entry system
- Mains operated smoke, heat and carbon monoxide detectors with battery backup
- 12-year LABC warranty

HEATING

- Heating and hot water provided by a combined heat and power (CHP) system
- Honeywell programmable thermostat

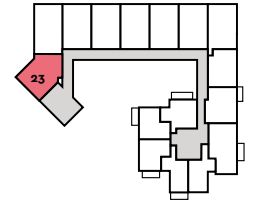
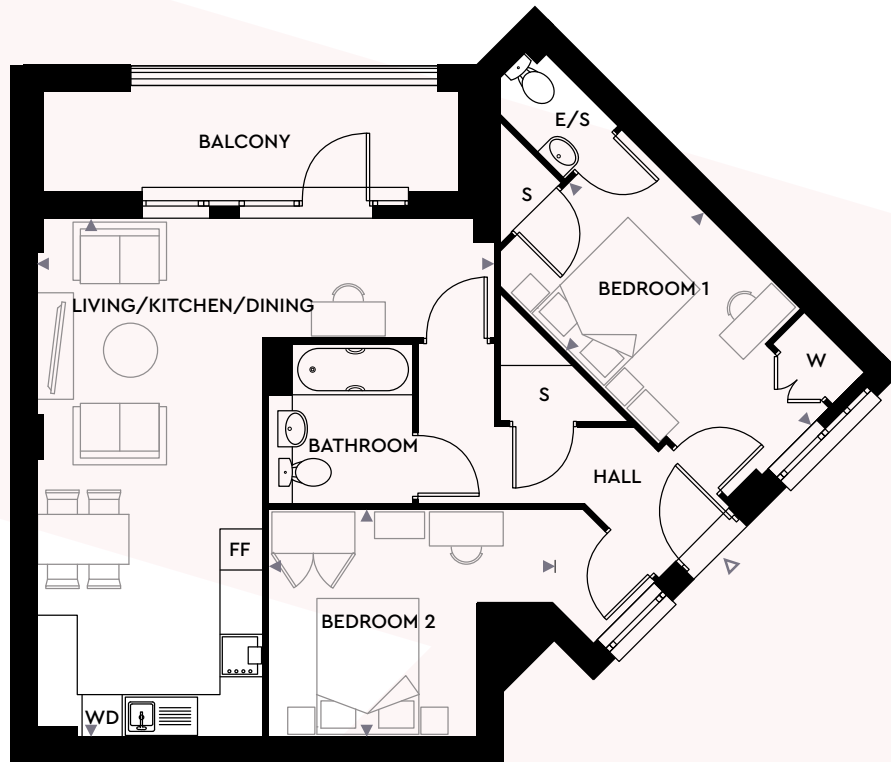
ENERGY EFFICIENCY

- Energy Performance Certificate (EPC) rating between 83 and 86 (B)
- Built to latest Building Regulation standards
- Aluminium-framed double-glazed windows

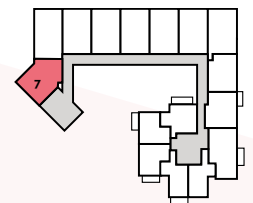
EXTERIOR

- Balconies to selected apartments:
 - Inset balconies with paving slab to floor
 - Cantilever balconies with timber decking to floor
- Secure residents' cycle store
- First floor communal space for use by all residents, with AstroTurf, paving and landscaping, children's play equipment and timber seating
- Fourth floor roof garden for use by all residents, with paving, landscaping and stone seating

*Refer to floorplans for information on apartments with en suites. The above specification shown is for general guidance and is subject to change due to Optivo's policy of continuous improvement. The finished product may vary from the information provided. On-site parking is specifically allocated to selected properties and cannot be changed or transferred. Please speak to our Sales Advisor for more details. *Refer to floorplans for information on apartments with en suites. October 2020.



3RD FLOOR



2ND FLOOR

GROSS INTERNAL AREA: 70.0 SQ. M. | 753.4 SQ. FT.

LIVING/KITCHEN/DINING

7.33M X 3.18M | 24'0" X 10'4"

BEDROOM 1

4.80M X 2.75M | 15'7" X 9'0"

BEDROOM 2

4.36M X 3.26M | 14'3" X 10'6"

FF – Fridge Freezer S – Storage Cupboard W – Wardrobe WD – Washer/Dryer

The floorplans provided are intended to only give a general indication of the proposed floor layout, are not drawn to scale and are not intended to form part of any offer, contract, warranty or representation. Measurements are given to the widest point, are approximate and are given as a guide only. They must not be relied upon as a statement or representation of fact. Do not use these measurements for carpet sizes, appliance spaces or items of furniture. Kitchen, bathroom and utility layouts may differ to build, and specific plot sizes and layouts may vary within the same unit type. For further clarification regarding specific individual plots, please ask our Sales Advisors. October 2020



INSPIRED BY YOU
BUILT FOR YOU

SPECIFICATION

KITCHEN

- Contemporary gloss handleless kitchen from Symphony with Dusk Grey base and larder units and Pearl Grey wall units
- Silestone Rogui colour quartz worktops with matching upstand and cashmere coloured glass splashback in behind hob
- Supra single bowl undermounted stainless steel sink with square dual-lever chrome mixer tap
- Bosch integrated appliances including:
 - induction hob with TouchSelect and PowerBoost functions
 - multifunction oven with LED display and pop-out controls
 - stainless steel pyramid chimney extractor hood
- Zanussi integrated appliances including:
 - dishwasher
 - fridge/freezer
 - washer dryer
- LED strip lights to underside of wall units

BATHROOM

- Large format porcelain tiles in Raven grey to floor
- Large format porcelain tiles in Slate grey to boxing behind basin and WC, to skirting and full-height around bath
- Contemporary bath in white with curved glass shower screen and bath panel in white
- Vado chrome thermostatic bath and shower mixer tap with matching shower attachment, slider and rail
- Vitra semi-recessed basin with half pedestal and Grohe chrome mixer tap
- Vitra back-to-wall WC with soft-close seat, concealed cistern and polished chrome flush plate
- Chrome ladder heated towel radiator
- Bespoke three-door mirrored vanity above basin with internal shaver socket

EN SUITE*

- Large format porcelain tiles in Raven grey to floor
- Large format porcelain tiles in Slate grey to splashback behind basin, to skirting and full-height around shower enclosure (selected apartments only)
- Vitra semi-pedestal basin with Grohe chrome mixer tap
- Vitra close-coupled WC
- Shower tray featuring Ideal Standard bi-fold door and Bristan wall-mounted shower attachment, slider and rail (selected apartments only)

BEDROOM

- Regency Cabaret carpet in Nickel grey colour
- Built-in wardrobe to master bedroom with full-height satin white doors, with mirror to the inside of one door, upper storage area and hanging rail

ELECTRICAL

- LED downlighters in white to open-plan living/kitchen/dining, bathroom, en suite and hallway
- Pendant light to bedroom(s)
- Brushed stainless steel switches and sockets throughout
- Phone and data points to living room and bedroom one
- TV and satellite connection point to living room pre-wired for SkyQ
- TV connection point to first and second bedroom

INTERIOR FINISHES

- Oak wood-effect laminate to open-plan living/kitchen/dining and hallway
- Satin finish chrome ironmongery throughout
- White satin paint finish to joinery throughout
- White matt emulsion paint finish to walls and ceilings throughout

SECURITY & PEACE OF MIND

- Front entrance door with multipoint locking system, security chain and door viewer
- Entrotec audio/visual door entry system
- Mains operated smoke, heat and carbon monoxide detectors with battery backup
- 12-year LABC warranty

HEATING

- Heating and hot water provided by a combined heat and power (CHP) system
- Honeywell programmable thermostat

ENERGY EFFICIENCY

- Energy Performance Certificate (EPC) rating between 83 and 86 (B)
- Built to latest Building Regulation standards
- Aluminium-framed double-glazed windows

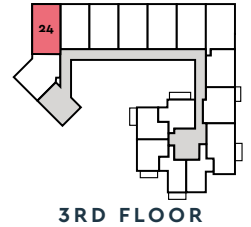
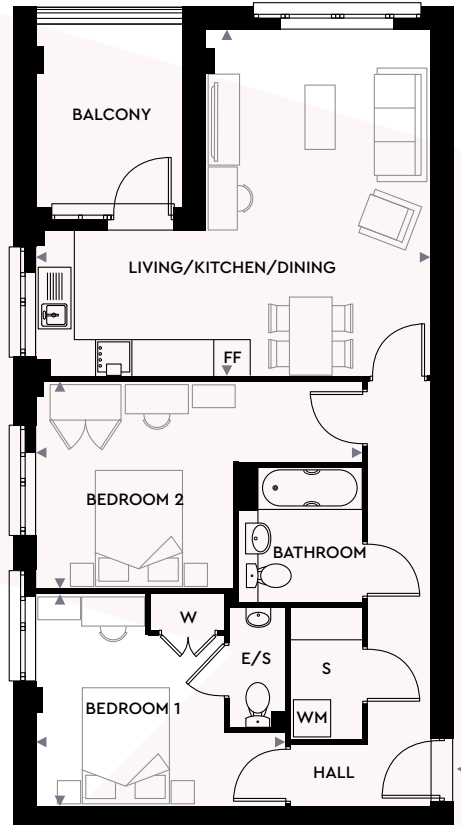
EXTERIOR

- Balconies to selected apartments:
 - Inset balconies with paving slab to floor
 - Cantilever balconies with timber decking to floor
- Secure residents' cycle store
- First floor communal space for use by all residents, with AstroTurf, paving and landscaping, children's play equipment and timber seating
- Fourth floor roof garden for use by all residents, with paving, landscaping and stone seating

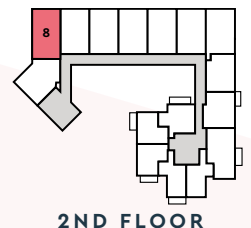
*Refer to floorplans for information on apartments with en suites. The above specification shown is for general guidance and is subject to change due to Optivo's policy of continuous improvement. The finished product may vary from the information provided. On-site parking is specifically allocated to selected properties and cannot be changed or transferred. Please speak to our Sales Advisor for more details. *Refer to floorplans for information on apartments with en suites. October 2020.

TWO BEDROOM APARTMENTS

APARTMENTS 8 & 24



3RD FLOOR



2ND FLOOR

GROSS INTERNAL AREA: 70.0 SQ. M. | 753.4 SQ. FT.

LIVING/KITCHEN/DINING

6.51M X 5.66M | 21'3" X 18'5"

BEDROOM 1

3.53M X 3.11M | 11'5" X 10'2"

BEDROOM 2

3.35M X 3.26M | 10'9" X 10'6"

FF – Fridge Freezer S – Storage Cupboard W – Wardrobe WD – Washer/Dryer

The floorplans provided are intended to only give a general indication of the proposed floor layout, are not drawn to scale and are not intended to form part of any offer, contract, warranty or representation. Measurements are given to the widest point, are approximate and are given as a guide only. They must not be relied upon as a statement or representation of fact. Do not use these measurements for carpet sizes, appliance spaces or items of furniture. Kitchen, bathroom and utility layouts may differ to build, and specific plot sizes and layouts may vary within the same unit type. For further clarification regarding specific individual plots, please ask our Sales Advisors. October 2020



**INSPIRED BY YOU
BUILT FOR YOU**

SPECIFICATION

KITCHEN

- Contemporary gloss handleless kitchen from Symphony with Dusk Grey base and larder units and Pearl Grey wall units
- Silestone Rogui colour quartz worktops with matching upstand and cashmere coloured glass splashback in behind hob
- Supra single bowl undermounted stainless steel sink with square dual-lever chrome mixer tap
- Bosch integrated appliances including:
 - induction hob with TouchSelect and PowerBoost functions
 - multifunction oven with LED display and pop-out controls
 - stainless steel pyramid chimney extractor hood
- Zanussi integrated appliances including:
 - dishwasher
 - fridge/freezer
 - washer dryer
- LED strip lights to underside of wall units

BATHROOM

- Large format porcelain tiles in Raven grey to floor
- Large format porcelain tiles in Slate grey to boxing behind basin and WC, to skirting and full-height around bath
- Contemporary bath in white with curved glass shower screen and bath panel in white
- Vado chrome thermostatic bath and shower mixer tap with matching shower attachment, slider and rail
- Vitra semi-recessed basin with half pedestal and Grohe chrome mixer tap
- Vitra back-to-wall WC with soft-close seat, concealed cistern and polished chrome flush plate
- Chrome ladder heated towel radiator
- Bespoke three-door mirrored vanity above basin with internal shaver socket

EN SUITE*

- Large format porcelain tiles in Raven grey to floor
- Large format porcelain tiles in Slate grey to splashback behind basin, to skirting and full-height around shower enclosure (selected apartments only)
- Vitra semi-pedestal basin with Grohe chrome mixer tap
- Vitra close-coupled WC
- Shower tray featuring Ideal Standard bi-fold door and Bristan wall-mounted shower attachment, slider and rail (selected apartments only)

BEDROOM

- Regency Cabaret carpet in Nickel grey colour
- Built-in wardrobe to master bedroom with full-height satin white doors, with mirror to the inside of one door, upper storage area and hanging rail

ELECTRICAL

- LED downlighters in white to open-plan living/kitchen/dining, bathroom, en suite and hallway
- Pendant light to bedroom(s)
- Brushed stainless steel switches and sockets throughout
- Phone and data points to living room and bedroom one
- TV and satellite connection point to living room pre-wired for SkyQ
- TV connection point to first and second bedroom

INTERIOR FINISHES

- Oak wood-effect laminate to open-plan living/kitchen/dining and hallway
- Satin finish chrome ironmongery throughout
- White satin paint finish to joinery throughout
- White matt emulsion paint finish to walls and ceilings throughout

SECURITY & PEACE OF MIND

- Front entrance door with multipoint locking system, security chain and door viewer
- Entrotec audio/visual door entry system
- Mains operated smoke, heat and carbon monoxide detectors with battery backup
- 12-year LABC warranty

HEATING

- Heating and hot water provided by a combined heat and power (CHP) system
- Honeywell programmable thermostat

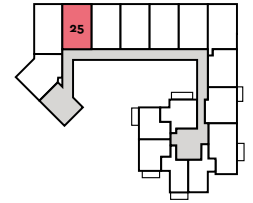
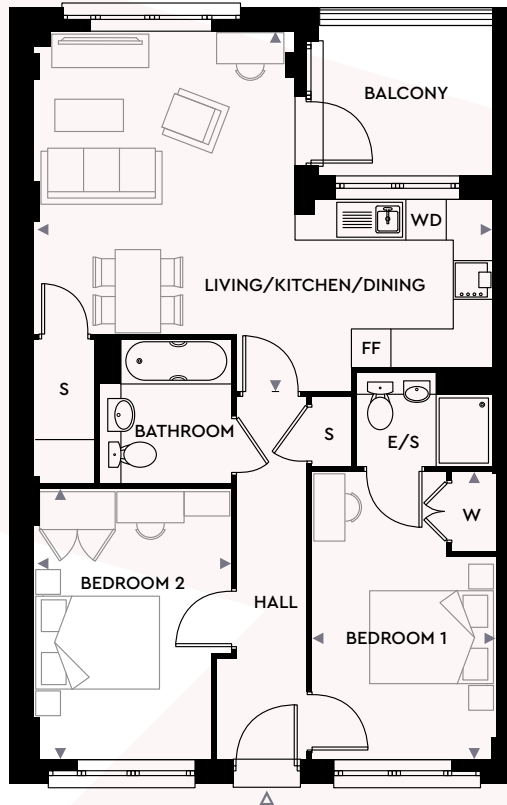
ENERGY EFFICIENCY

- Energy Performance Certificate (EPC) rating between 83 and 86 (B)
- Built to latest Building Regulation standards
- Aluminium-framed double-glazed windows

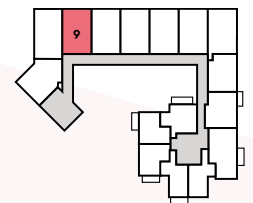
EXTERIOR

- Balconies to selected apartments:
 - Inset balconies with paving slab to floor
 - Cantilever balconies with timber decking to floor
- Secure residents' cycle store
- First floor communal space for use by all residents, with AstroTurf, paving and landscaping, children's play equipment and timber seating
- Fourth floor roof garden for use by all residents, with paving, landscaping and stone seating

*Refer to floorplans for information on apartments with en suites. The above specification shown is for general guidance and is subject to change due to Optivo's policy of continuous improvement. The finished product may vary from the information provided. On-site parking is specifically allocated to selected properties and cannot be changed or transferred. Please speak to our Sales Advisor for more details. *Refer to floorplans for information on apartments with en suites. October 2020.



3RD FLOOR



2ND FLOOR

GROSS INTERNAL AREA: 70.0 SQ. M. | 753.4 SQ. FT.

LIVING/KITCHEN/DINING

7.00M X 4.60M | 22'9" X 15'0"

BEDROOM 1

4.37M X 2.75M | 14'3" X 9'0"

BEDROOM 2

4.12M X 3.05M | 13'5" X 10'0"

FF – Fridge Freezer S – Storage Cupboard W – Wardrobe WD – Washer/Dryer

The floorplans provided are intended to only give a general indication of the proposed floor layout, are not drawn to scale and are not intended to form part of any offer, contract, warranty or representation. Measurements are given to the widest point, are approximate and are given as a guide only. They must not be relied upon as a statement or representation of fact. Do not use these measurements for carpet sizes, appliance spaces or items of furniture. Kitchen, bathroom and utility layouts may differ to build, and specific plot sizes and layouts may vary within the same unit type. For further clarification regarding specific individual plots, please ask our Sales Advisors. October 2020



INSPIRED BY YOU
BUILT FOR YOU

SPECIFICATION

KITCHEN

- Contemporary gloss handleless kitchen from Symphony with Dusk Grey base and larder units and Pearl Grey wall units
- Silestone Rogui colour quartz worktops with matching upstand and cashmere coloured glass splashback in behind hob
- Supra single bowl undermounted stainless steel sink with square dual-lever chrome mixer tap
- Bosch integrated appliances including:
 - induction hob with TouchSelect and PowerBoost functions
 - multifunction oven with LED display and pop-out controls
 - stainless steel pyramid chimney extractor hood
- Zanussi integrated appliances including:
 - dishwasher
 - fridge/freezer
 - washer dryer
- LED strip lights to underside of wall units

BATHROOM

- Large format porcelain tiles in Raven grey to floor
- Large format porcelain tiles in Slate grey to boxing behind basin and WC, to skirting and full-height around bath
- Contemporary bath in white with curved glass shower screen and bath panel in white
- Vado chrome thermostatic bath and shower mixer tap with matching shower attachment, slider and rail
- Vitra semi-recessed basin with half pedestal and Grohe chrome mixer tap
- Vitra back-to-wall WC with soft-close seat, concealed cistern and polished chrome flush plate
- Chrome ladder heated towel radiator
- Bespoke three-door mirrored vanity above basin with internal shaver socket

EN SUITE*

- Large format porcelain tiles in Raven grey to floor
- Large format porcelain tiles in Slate grey to splashback behind basin, to skirting and full-height around shower enclosure (selected apartments only)
- Vitra semi-pedestal basin with Grohe chrome mixer tap
- Vitra close-coupled WC
- Shower tray featuring Ideal Standard bi-fold door and Bristan wall-mounted shower attachment, slider and rail (selected apartments only)

BEDROOM

- Regency Cabaret carpet in Nickel grey colour
- Built-in wardrobe to master bedroom with full-height satin white doors, with mirror to the inside of one door, upper storage area and hanging rail

ELECTRICAL

- LED downlighters in white to open-plan living/kitchen/dining, bathroom, en suite and hallway
- Pendant light to bedroom(s)
- Brushed stainless steel switches and sockets throughout
- Phone and data points to living room and bedroom one
- TV and satellite connection point to living room pre-wired for SkyQ
- TV connection point to first and second bedroom

INTERIOR FINISHES

- Oak wood-effect laminate to open-plan living/kitchen/dining and hallway
- Satin finish chrome ironmongery throughout
- White satin paint finish to joinery throughout
- White matt emulsion paint finish to walls and ceilings throughout

SECURITY & PEACE OF MIND

- Front entrance door with multipoint locking system, security chain and door viewer
- Entrotec audio/visual door entry system
- Mains operated smoke, heat and carbon monoxide detectors with battery backup
- 12-year LABC warranty

HEATING

- Heating and hot water provided by a combined heat and power (CHP) system
- Honeywell programmable thermostat

ENERGY EFFICIENCY

- Energy Performance Certificate (EPC) rating between 83 and 86 (B)
- Built to latest Building Regulation standards
- Aluminium-framed double-glazed windows

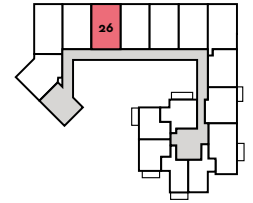
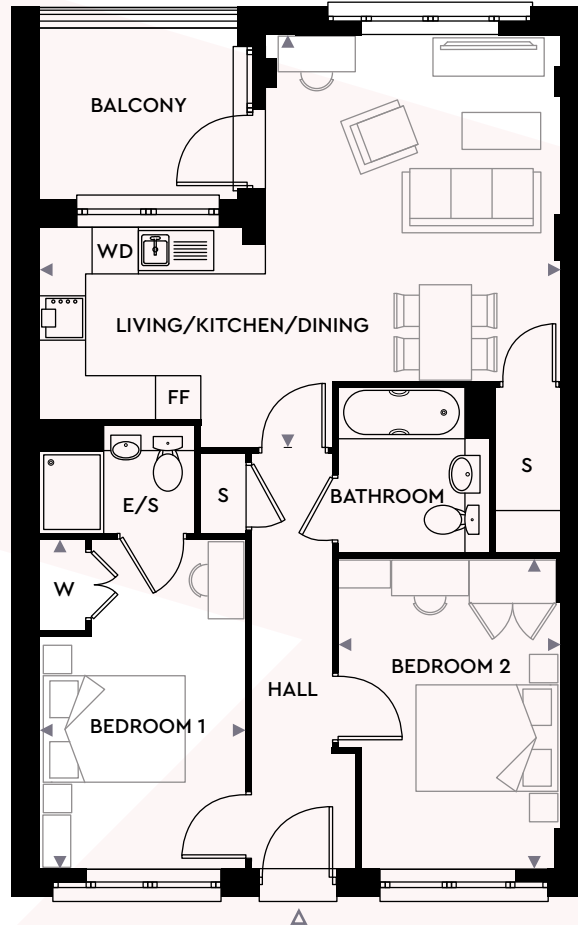
EXTERIOR

- Balconies to selected apartments:
 - Inset balconies with paving slab to floor
 - Cantilever balconies with timber decking to floor
- Secure residents' cycle store
- First floor communal space for use by all residents, with AstroTurf, paving and landscaping, children's play equipment and timber seating
- Fourth floor roof garden for use by all residents, with paving, landscaping and stone seating

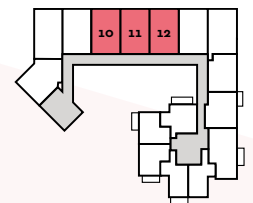
*Refer to floorplans for information on apartments with en suites. The above specification shown is for general guidance and is subject to change due to Optivo's policy of continuous improvement. The finished product may vary from the information provided. On-site parking is specifically allocated to selected properties and cannot be changed or transferred. Please speak to our Sales Advisor for more details. *Refer to floorplans for information on apartments with en suites. October 2020.

TWO BEDROOM APARTMENTS

APARTMENTS 10, 11, 12 & 26



3RD FLOOR



2ND FLOOR

GROSS INTERNAL AREA: 70.0 SQ. M. | 753.4 SQ. FT.

LIVING/KITCHEN/DINING

7.05M X 4.60M | 23'1" X 15'0"

BEDROOM 1

4.37M X 2.75M | 14'3" X 9'0"

BEDROOM 2

4.12M X 3.05M | 13'5" X 10'0"

FF – Fridge Freezer S – Storage Cupboard W – Wardrobe WD – Washer/Dryer

The floorplans provided are intended to only give a general indication of the proposed floor layout, are not drawn to scale and are not intended to form part of any offer, contract, warranty or representation. Measurements are given to the widest point, are approximate and are given as a guide only. They must not be relied upon as a statement or representation of fact. Do not use these measurements for carpet sizes, appliance spaces or items of furniture. Kitchen, bathroom and utility layouts may differ to build, and specific plot sizes and layouts may vary within the same unit type. For further clarification regarding specific individual plots, please ask our Sales Advisors. October 2020



INSPIRED BY YOU
BUILT FOR YOU

SPECIFICATION

KITCHEN

- Contemporary gloss handleless kitchen from Symphony with Dusk Grey base and larder units and Pearl Grey wall units
- Silestone Rogui colour quartz worktops with matching upstand and cashmere coloured glass splashback in behind hob
- Supra single bowl undermounted stainless steel sink with square dual-lever chrome mixer tap
- Bosch integrated appliances including:
 - induction hob with TouchSelect and PowerBoost functions
 - multifunction oven with LED display and pop-out controls
 - stainless steel pyramid chimney extractor hood
- Zanussi integrated appliances including:
 - dishwasher
 - fridge/freezer
 - washer dryer
- LED strip lights to underside of wall units

BATHROOM

- Large format porcelain tiles in Raven grey to floor
- Large format porcelain tiles in Slate grey to boxing behind basin and WC, to skirting and full-height around bath
- Contemporary bath in white with curved glass shower screen and bath panel in white
- Vado chrome thermostatic bath and shower mixer tap with matching shower attachment, slider and rail
- Vitra semi-recessed basin with half pedestal and Grohe chrome mixer tap
- Vitra back-to-wall WC with soft-close seat, concealed cistern and polished chrome flush plate
- Chrome ladder heated towel radiator
- Bespoke three-door mirrored vanity above basin with internal shaver socket

EN SUITE*

- Large format porcelain tiles in Raven grey to floor
- Large format porcelain tiles in Slate grey to splashback behind basin, to skirting and full-height around shower enclosure (selected apartments only)
- Vitra semi-pedestal basin with Grohe chrome mixer tap
- Vitra close-coupled WC
- Shower tray featuring Ideal Standard bi-fold door and Bristan wall-mounted shower attachment, slider and rail (selected apartments only)

BEDROOM

- Regency Cabaret carpet in Nickel grey colour
- Built-in wardrobe to master bedroom with full-height satin white doors, with mirror to the inside of one door, upper storage area and hanging rail

ELECTRICAL

- LED downlighters in white to open-plan living/kitchen/dining, bathroom, en suite and hallway
- Pendant light to bedroom(s)
- Brushed stainless steel switches and sockets throughout
- Phone and data points to living room and bedroom one
- TV and satellite connection point to living room pre-wired for SkyQ
- TV connection point to first and second bedroom

INTERIOR FINISHES

- Oak wood-effect laminate to open-plan living/kitchen/dining and hallway
- Satin finish chrome ironmongery throughout
- White satin paint finish to joinery throughout
- White matt emulsion paint finish to walls and ceilings throughout

SECURITY & PEACE OF MIND

- Front entrance door with multipoint locking system, security chain and door viewer
- Entrotec audio/visual door entry system
- Mains operated smoke, heat and carbon monoxide detectors with battery backup
- 12-year LABC warranty

HEATING

- Heating and hot water provided by a combined heat and power (CHP) system
- Honeywell programmable thermostat

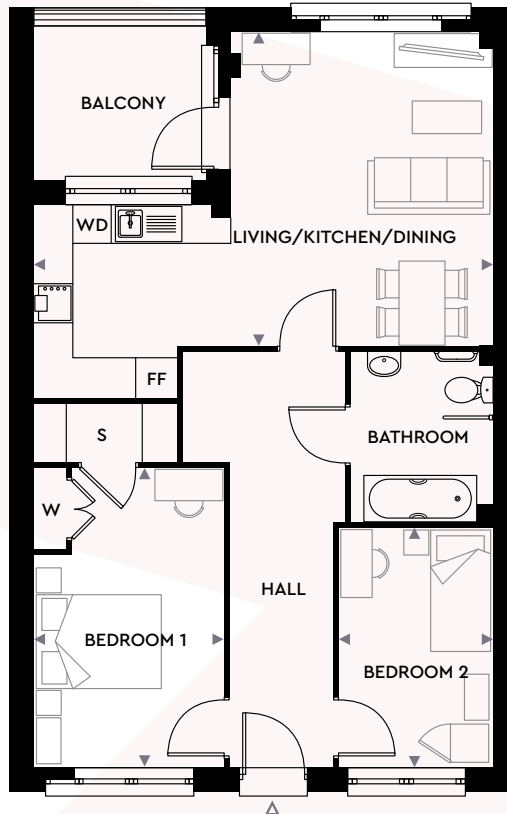
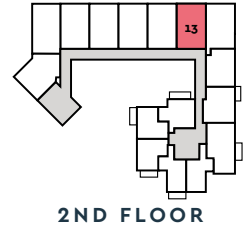
ENERGY EFFICIENCY

- Energy Performance Certificate (EPC) rating between 83 and 86 (B)
- Built to latest Building Regulation standards
- Aluminium-framed double-glazed windows

EXTERIOR

- Balconies to selected apartments:
 - Inset balconies with paving slab to floor
 - Cantilever balconies with timber decking to floor
- Secure residents' cycle store
- First floor communal space for use by all residents, with AstroTurf, paving and landscaping, children's play equipment and timber seating
- Fourth floor roof garden for use by all residents, with paving, landscaping and stone seating

*Refer to floorplans for information on apartments with en suites. The above specification shown is for general guidance and is subject to change due to Optivo's policy of continuous improvement. The finished product may vary from the information provided. On-site parking is specifically allocated to selected properties and cannot be changed or transferred. Please speak to our Sales Advisor for more details. *Refer to floorplans for information on apartments with en suites. October 2020.



GROSS INTERNAL AREA: 70.0 SQ. M. | 753.4 SQ. FT.

LIVING/KITCHEN/DINING

7.14M X 4.72M | 23'4" X 15'4"

BEDROOM 1

4.50M X 3.00M | 14'7" X 9'8"

BEDROOM 2

3.60M X 2.40M | 11'8" X 7'8"

FF – Fridge Freezer S – Storage Cupboard W – Wardrobe WD – Washer/Dryer

The floorplans provided are intended to only give a general indication of the proposed floor layout, are not drawn to scale and are not intended to form part of any offer, contract, warranty or representation. Measurements are given to the widest point, are approximate and are given as a guide only. They must not be relied upon as a statement or representation of fact. Do not use these measurements for carpet sizes, appliance spaces or items of furniture. Kitchen, bathroom and utility layouts may differ to build, and specific plot sizes and layouts may vary within the same unit type. For further clarification regarding specific individual plots, please ask our Sales Advisors. October 2020



INSPIRED BY YOU
BUILT FOR YOU

SPECIFICATION

KITCHEN

- Contemporary gloss handleless kitchen from Symphony with Dusk Grey base and larder units and Pearl Grey wall units
- Silestone Rogui colour quartz worktops with matching upstand and cashmere coloured glass splashback in behind hob
- Supra single bowl undermounted stainless steel sink with square dual-lever chrome mixer tap
- Bosch integrated appliances including:
 - induction hob with TouchSelect and PowerBoost functions
 - multifunction oven with LED display and pop-out controls
 - stainless steel pyramid chimney extractor hood
- Zanussi integrated appliances including:
 - dishwasher
 - fridge/freezer
 - washer dryer
- LED strip lights to underside of wall units

BATHROOM

- Large format porcelain tiles in Raven grey to floor
- Large format porcelain tiles in Slate grey to boxing behind basin and WC, to skirting and full-height around bath
- Contemporary bath in white with curved glass shower screen and bath panel in white
- Vado chrome thermostatic bath and shower mixer tap with matching shower attachment, slider and rail
- Vitra semi-recessed basin with half pedestal and Grohe chrome mixer tap
- Vitra back-to-wall WC with soft-close seat, concealed cistern and polished chrome flush plate
- Chrome ladder heated towel radiator
- Bespoke three-door mirrored vanity above basin with internal shaver socket

EN SUITE*

- Large format porcelain tiles in Raven grey to floor
- Large format porcelain tiles in Slate grey to splashback behind basin, to skirting and full-height around shower enclosure (selected apartments only)
- Vitra semi-pedestal basin with Grohe chrome mixer tap
- Vitra close-coupled WC
- Shower tray featuring Ideal Standard bi-fold door and Bristan wall-mounted shower attachment, slider and rail (selected apartments only)

BEDROOM

- Regency Cabaret carpet in Nickel grey colour
- Built-in wardrobe to master bedroom with full-height satin white doors, with mirror to the inside of one door, upper storage area and hanging rail

ELECTRICAL

- LED downlighters in white to open-plan living/kitchen/dining, bathroom, en suite and hallway
- Pendant light to bedroom(s)
- Brushed stainless steel switches and sockets throughout
- Phone and data points to living room and bedroom one
- TV and satellite connection point to living room pre-wired for SkyQ
- TV connection point to first and second bedroom

INTERIOR FINISHES

- Oak wood-effect laminate to open-plan living/kitchen/dining and hallway
- Satin finish chrome ironmongery throughout
- White satin paint finish to joinery throughout
- White matt emulsion paint finish to walls and ceilings throughout

SECURITY & PEACE OF MIND

- Front entrance door with multipoint locking system, security chain and door viewer
- Entrotec audio/visual door entry system
- Mains operated smoke, heat and carbon monoxide detectors with battery backup
- 12-year LABC warranty

HEATING

- Heating and hot water provided by a combined heat and power (CHP) system
- Honeywell programmable thermostat

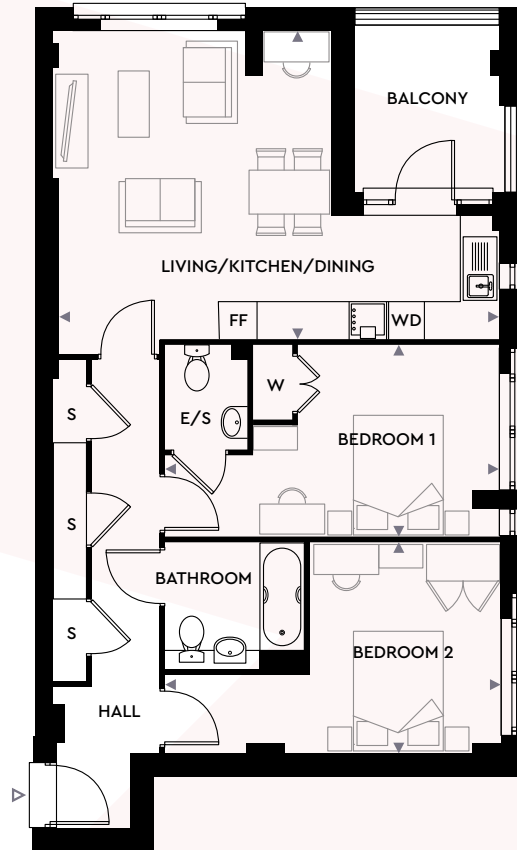
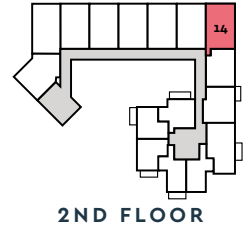
ENERGY EFFICIENCY

- Energy Performance Certificate (EPC) rating between 83 and 86 (B)
- Built to latest Building Regulation standards
- Aluminium-framed double-glazed windows

EXTERIOR

- Balconies to selected apartments:
 - Inset balconies with paving slab to floor
 - Cantilever balconies with timber decking to floor
- Secure residents' cycle store
- First floor communal space for use by all residents, with AstroTurf, paving and landscaping, children's play equipment and timber seating
- Fourth floor roof garden for use by all residents, with paving, landscaping and stone seating

*Refer to floorplans for information on apartments with en suites. The above specification shown is for general guidance and is subject to change due to Optivo's policy of continuous improvement. The finished product may vary from the information provided. On-site parking is specifically allocated to selected properties and cannot be changed or transferred. Please speak to our Sales Advisor for more details. *Refer to floorplans for information on apartments with en suites. October 2020.



GROSS INTERNAL AREA: 77.0 SQ. M. | 828.8 SQ. FT.

LIVING/KITCHEN/DINING	7.02M X 4.87M 23'0" X 15'9"
BEDROOM 1	5.32M X 3.04M 17'4" X 9'9"
BEDROOM 2	5.32M X 3.34M 17'4" X 10'9"

FF – Fridge Freezer S – Storage Cupboard W – Wardrobe WD – Washer/Dryer

The floorplans provided are intended to only give a general indication of the proposed floor layout, are not drawn to scale and are not intended to form part of any offer, contract, warranty or representation. Measurements are given to the widest point, are approximate and are given as a guide only. They must not be relied upon as a statement or representation of fact. Do not use these measurements for carpet sizes, appliance spaces or items of furniture. Kitchen, bathroom and utility layouts may differ to build, and specific plot sizes and layouts may vary within the same unit type. For further clarification regarding specific individual plots, please ask our Sales Advisors. October 2020



INSPIRED BY YOU
BUILT FOR YOU

SPECIFICATION

KITCHEN

- Contemporary gloss handleless kitchen from Symphony with Dusk Grey base and larder units and Pearl Grey wall units
- Silestone Rogui colour quartz worktops with matching upstand and cashmere coloured glass splashback in behind hob
- Supra single bowl undermounted stainless steel sink with square dual-lever chrome mixer tap
- Bosch integrated appliances including:
 - induction hob with TouchSelect and PowerBoost functions
 - multifunction oven with LED display and pop-out controls
 - stainless steel pyramid chimney extractor hood
- Zanussi integrated appliances including:
 - dishwasher
 - fridge/freezer
 - washer dryer
- LED strip lights to underside of wall units

BATHROOM

- Large format porcelain tiles in Raven grey to floor
- Large format porcelain tiles in Slate grey to boxing behind basin and WC, to skirting and full-height around bath
- Contemporary bath in white with curved glass shower screen and bath panel in white
- Vado chrome thermostatic bath and shower mixer tap with matching shower attachment, slider and rail
- Vitra semi-recessed basin with half pedestal and Grohe chrome mixer tap
- Vitra back-to-wall WC with soft-close seat, concealed cistern and polished chrome flush plate
- Chrome ladder heated towel radiator
- Bespoke three-door mirrored vanity above basin with internal shaver socket

EN SUITE*

- Large format porcelain tiles in Raven grey to floor
- Large format porcelain tiles in Slate grey to splashback behind basin, to skirting and full-height around shower enclosure (selected apartments only)
- Vitra semi-pedestal basin with Grohe chrome mixer tap
- Vitra close-coupled WC
- Shower tray featuring Ideal Standard bi-fold door and Bristan wall-mounted shower attachment, slider and rail (selected apartments only)

BEDROOM

- Regency Cabaret carpet in Nickel grey colour
- Built-in wardrobe to master bedroom with full-height satin white doors, with mirror to the inside of one door, upper storage area and hanging rail

ELECTRICAL

- LED downlighters in white to open-plan living/kitchen/dining, bathroom, en suite and hallway
- Pendant light to bedroom(s)
- Brushed stainless steel switches and sockets throughout
- Phone and data points to living room and bedroom one
- TV and satellite connection point to living room pre-wired for SkyQ
- TV connection point to first and second bedroom

INTERIOR FINISHES

- Oak wood-effect laminate to open-plan living/kitchen/dining and hallway
- Satin finish chrome ironmongery throughout
- White satin paint finish to joinery throughout
- White matt emulsion paint finish to walls and ceilings throughout

SECURITY & PEACE OF MIND

- Front entrance door with multipoint locking system, security chain and door viewer
- Entrotec audio/visual door entry system
- Mains operated smoke, heat and carbon monoxide detectors with battery backup
- 12-year LABC warranty

HEATING

- Heating and hot water provided by a combined heat and power (CHP) system
- Honeywell programmable thermostat

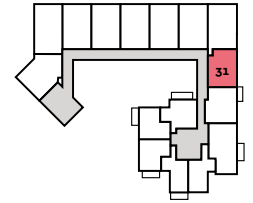
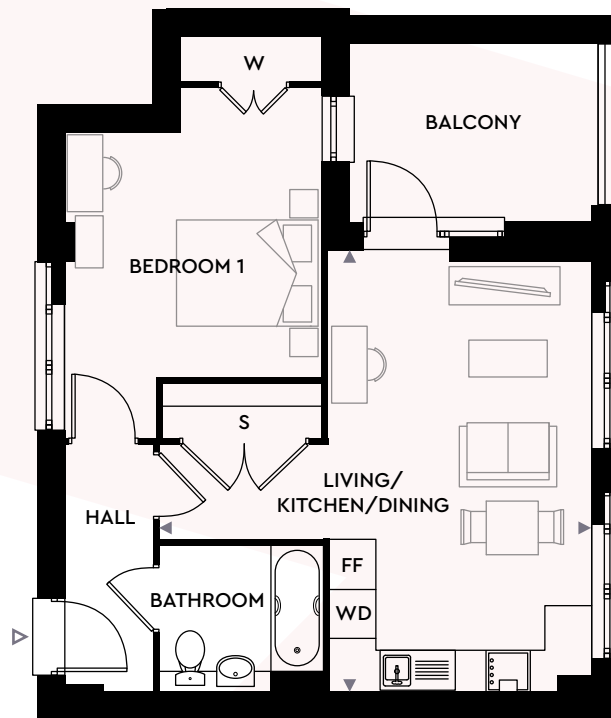
ENERGY EFFICIENCY

- Energy Performance Certificate (EPC) rating between 83 and 86 (B)
- Built to latest Building Regulation standards
- Aluminium-framed double-glazed windows

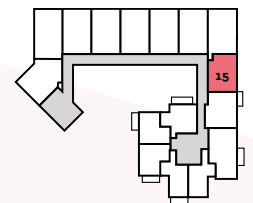
EXTERIOR

- Balconies to selected apartments:
 - Inset balconies with paving slab to floor
 - Cantilever balconies with timber decking to floor
- Secure residents' cycle store
- First floor communal space for use by all residents, with AstroTurf, paving and landscaping, children's play equipment and timber seating
- Fourth floor roof garden for use by all residents, with paving, landscaping and stone seating

*Refer to floorplans for information on apartments with en suites. The above specification shown is for general guidance and is subject to change due to Optivo's policy of continuous improvement. The finished product may vary from the information provided. On-site parking is specifically allocated to selected properties and cannot be changed or transferred. Please speak to our Sales Advisor for more details. *Refer to floorplans for information on apartments with en suites. October 2020.



3RD FLOOR



2ND FLOOR

GROSS INTERNAL AREA: 50.0 SQ. M. | 538.1 SQ. FT.

LIVING/KITCHEN/DINING

5.93M X 3.50M | 19'4" X 11'4"

BEDROOM 1

4.58M X 3.47M | 15'0" X 11'3"

FF – Fridge Freezer S – Storage Cupboard W – Wardrobe WD – Washer/Dryer

The floorplans provided are intended to only give a general indication of the proposed floor layout, are not drawn to scale and are not intended to form part of any offer, contract, warranty or representation. Measurements are given to the widest point, are approximate and are given as a guide only. They must not be relied upon as a statement or representation of fact. Do not use these measurements for carpet sizes, appliance spaces or items of furniture. Kitchen, bathroom and utility layouts may differ to build, and specific plot sizes and layouts may vary within the same unit type. For further clarification regarding specific individual plots, please ask our Sales Advisors. October 2020



INSPIRED BY YOU
BUILT FOR YOU

SPECIFICATION

KITCHEN

- Contemporary gloss handleless kitchen from Symphony with Dusk Grey base and larder units and Pearl Grey wall units
- Silestone Rogui colour quartz worktops with matching upstand and cashmere coloured glass splashback in behind hob
- Supra single bowl undermounted stainless steel sink with square dual-lever chrome mixer tap
- Bosch integrated appliances including:
 - induction hob with TouchSelect and PowerBoost functions
 - multifunction oven with LED display and pop-out controls
 - stainless steel pyramid chimney extractor hood
- Zanussi integrated appliances including:
 - dishwasher
 - fridge/freezer
 - washer dryer
- LED strip lights to underside of wall units

BATHROOM

- Large format porcelain tiles in Raven grey to floor
- Large format porcelain tiles in Slate grey to boxing behind basin and WC, to skirting and full-height around bath
- Contemporary bath in white with curved glass shower screen and bath panel in white
- Vado chrome thermostatic bath and shower mixer tap with matching shower attachment, slider and rail
- Vitra semi-recessed basin with half pedestal and Grohe chrome mixer tap
- Vitra back-to-wall WC with soft-close seat, concealed cistern and polished chrome flush plate
- Chrome ladder heated towel radiator
- Bespoke three-door mirrored vanity above basin with internal shaver socket

EN SUITE*

- Large format porcelain tiles in Raven grey to floor
- Large format porcelain tiles in Slate grey to splashback behind basin, to skirting and full-height around shower enclosure (selected apartments only)
- Vitra semi-pedestal basin with Grohe chrome mixer tap
- Vitra close-coupled WC
- Shower tray featuring Ideal Standard bi-fold door and Bristan wall-mounted shower attachment, slider and rail (selected apartments only)

BEDROOM

- Regency Cabaret carpet in Nickel grey colour
- Built-in wardrobe to master bedroom with full-height satin white doors, with mirror to the inside of one door, upper storage area and hanging rail

ELECTRICAL

- LED downlighters in white to open-plan living/kitchen/dining, bathroom, en suite and hallway
- Pendant light to bedroom(s)
- Brushed stainless steel switches and sockets throughout
- Phone and data points to living room and bedroom one
- TV and satellite connection point to living room pre-wired for SkyQ
- TV connection point to first and second bedroom

INTERIOR FINISHES

- Oak wood-effect laminate to open-plan living/kitchen/dining and hallway
- Satin finish chrome ironmongery throughout
- White satin paint finish to joinery throughout
- White matt emulsion paint finish to walls and ceilings throughout

SECURITY & PEACE OF MIND

- Front entrance door with multipoint locking system, security chain and door viewer
- Entrotec audio/visual door entry system
- Mains operated smoke, heat and carbon monoxide detectors with battery backup
- 12-year LABC warranty

HEATING

- Heating and hot water provided by a combined heat and power (CHP) system
- Honeywell programmable thermostat

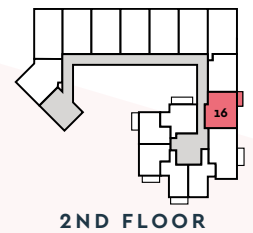
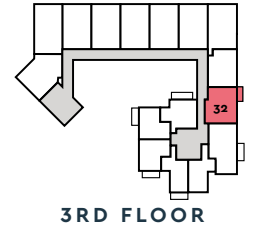
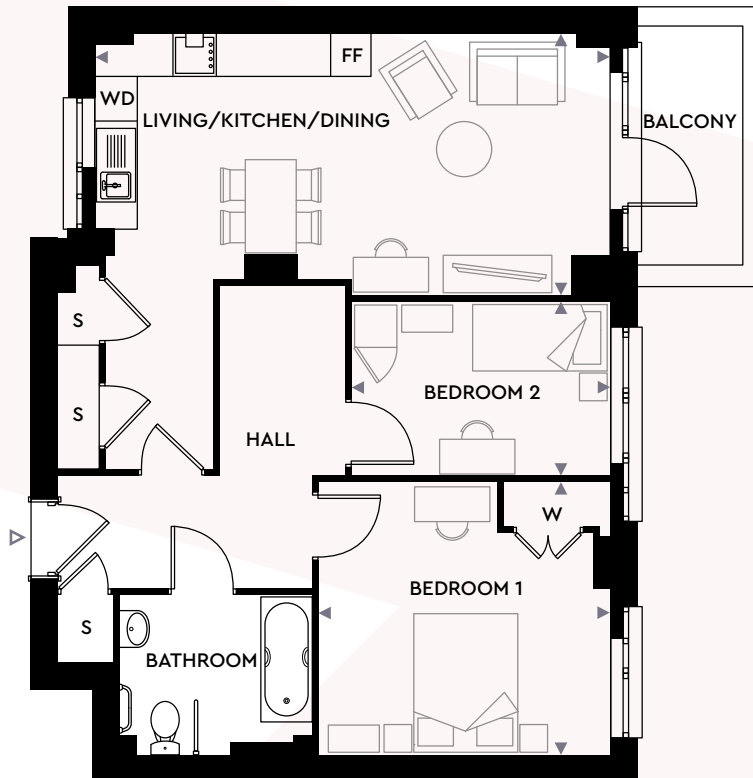
ENERGY EFFICIENCY

- Energy Performance Certificate (EPC) rating between 83 and 86 (B)
- Built to latest Building Regulation standards
- Aluminium-framed double-glazed windows

EXTERIOR

- Balconies to selected apartments:
 - Inset balconies with paving slab to floor
 - Cantilever balconies with timber decking to floor
- Secure residents' cycle store
- First floor communal space for use by all residents, with AstroTurf, paving and landscaping, children's play equipment and timber seating
- Fourth floor roof garden for use by all residents, with paving, landscaping and stone seating

*Refer to floorplans for information on apartments with en suites. The above specification shown is for general guidance and is subject to change due to Optivo's policy of continuous improvement. The finished product may vary from the information provided. On-site parking is specifically allocated to selected properties and cannot be changed or transferred. Please speak to our Sales Advisor for more details. *Refer to floorplans for information on apartments with en suites. October 2020.



GROSS INTERNAL AREA: 74.0 SQ. M. | 796.5 SQ. FT.

LIVING/KITCHEN/DINING

7.07M X 3.64M | 23'1" X 11'9"

BEDROOM 1

4.01M X 3.70M | 13'1" X 12'1"

BEDROOM 2

3.55M X 2.40M | 11'6" X 7'8"

FF – Fridge Freezer S – Storage Cupboard W – Wardrobe WD – Washer/Dryer

The floorplans provided are intended to only give a general indication of the proposed floor layout, are not drawn to scale and are not intended to form part of any offer, contract, warranty or representation. Measurements are given to the widest point, are approximate and are given as a guide only. They must not be relied upon as a statement or representation of fact. Do not use these measurements for carpet sizes, appliance spaces or items of furniture. Kitchen, bathroom and utility layouts may differ to build, and specific plot sizes and layouts may vary within the same unit type. For further clarification regarding specific individual plots, please ask our Sales Advisors. October 2020



INSPIRED BY YOU
BUILT FOR YOU

SPECIFICATION

KITCHEN

- Contemporary gloss handleless kitchen from Symphony with Dusk Grey base and larder units and Pearl Grey wall units
- Silestone Rogui colour quartz worktops with matching upstand and cashmere coloured glass splashback in behind hob
- Supra single bowl undermounted stainless steel sink with square dual-lever chrome mixer tap
- Bosch integrated appliances including:
 - induction hob with TouchSelect and PowerBoost functions
 - multifunction oven with LED display and pop-out controls
 - stainless steel pyramid chimney extractor hood
- Zanussi integrated appliances including:
 - dishwasher
 - fridge/freezer
 - washer dryer
- LED strip lights to underside of wall units

BATHROOM

- Large format porcelain tiles in Raven grey to floor
- Large format porcelain tiles in Slate grey to boxing behind basin and WC, to skirting and full-height around bath
- Contemporary bath in white with curved glass shower screen and bath panel in white
- Vado chrome thermostatic bath and shower mixer tap with matching shower attachment, slider and rail
- Vitra semi-recessed basin with half pedestal and Grohe chrome mixer tap
- Vitra back-to-wall WC with soft-close seat, concealed cistern and polished chrome flush plate
- Chrome ladder heated towel radiator
- Bespoke three-door mirrored vanity above basin with internal shaver socket

EN SUITE*

- Large format porcelain tiles in Raven grey to floor
- Large format porcelain tiles in Slate grey to splashback behind basin, to skirting and full-height around shower enclosure (selected apartments only)
- Vitra semi-pedestal basin with Grohe chrome mixer tap
- Vitra close-coupled WC
- Shower tray featuring Ideal Standard bi-fold door and Bristan wall-mounted shower attachment, slider and rail (selected apartments only)

BEDROOM

- Regency Cabaret carpet in Nickel grey colour
- Built-in wardrobe to master bedroom with full-height satin white doors, with mirror to the inside of one door, upper storage area and hanging rail

ELECTRICAL

- LED downlighters in white to open-plan living/kitchen/dining, bathroom, en suite and hallway
- Pendant light to bedroom(s)
- Brushed stainless steel switches and sockets throughout
- Phone and data points to living room and bedroom one
- TV and satellite connection point to living room pre-wired for SkyQ
- TV connection point to first and second bedroom

INTERIOR FINISHES

- Oak wood-effect laminate to open-plan living/kitchen/dining and hallway
- Satin finish chrome ironmongery throughout
- White satin paint finish to joinery throughout
- White matt emulsion paint finish to walls and ceilings throughout

SECURITY & PEACE OF MIND

- Front entrance door with multipoint locking system, security chain and door viewer
- Entrotec audio/visual door entry system
- Mains operated smoke, heat and carbon monoxide detectors with battery backup
- 12-year LABC warranty

HEATING

- Heating and hot water provided by a combined heat and power (CHP) system
- Honeywell programmable thermostat

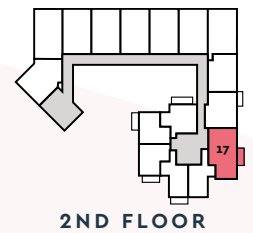
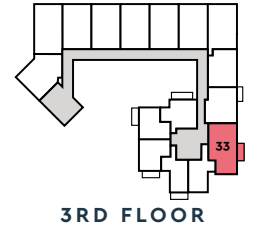
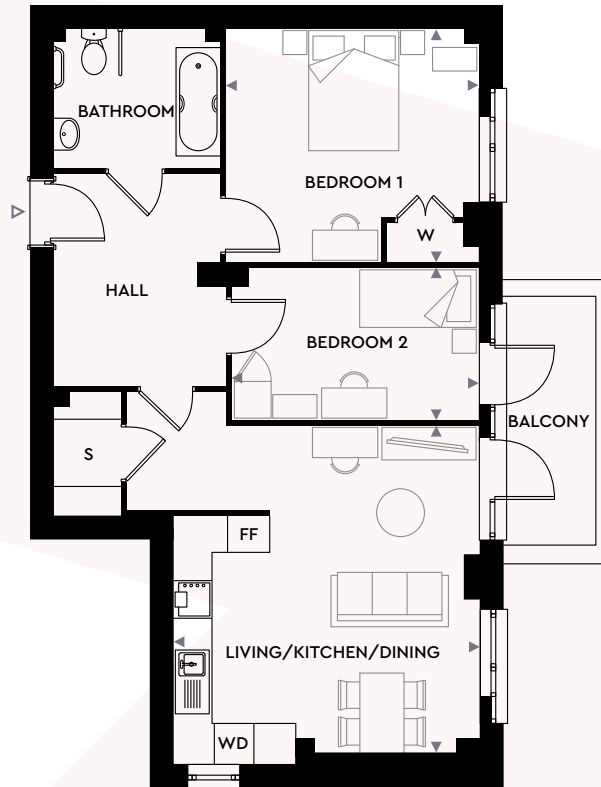
ENERGY EFFICIENCY

- Energy Performance Certificate (EPC) rating between 83 and 86 (B)
- Built to latest Building Regulation standards
- Aluminium-framed double-glazed windows

EXTERIOR

- Balconies to selected apartments:
 - Inset balconies with paving slab to floor
 - Cantilever balconies with timber decking to floor
- Secure residents' cycle store
- First floor communal space for use by all residents, with AstroTurf, paving and landscaping, children's play equipment and timber seating
- Fourth floor roof garden for use by all residents, with paving, landscaping and stone seating

*Refer to floorplans for information on apartments with en suites. The above specification shown is for general guidance and is subject to change due to Optivo's policy of continuous improvement. The finished product may vary from the information provided. On-site parking is specifically allocated to selected properties and cannot be changed or transferred. Please speak to our Sales Advisor for more details. *Refer to floorplans for information on apartments with en suites. October 2020.



GROSS INTERNAL AREA: 70.0 SQ. M. | 753.4 SQ. FT.

LIVING/KITCHEN/DINING

5.30M X 4.82M | 17'3" X 15'8"

BEDROOM 1

4.01M X 3.70M | 13'1" X 12'1"

BEDROOM 2

3.91M X 2.40M | 12'8" X 7'8"

FF – Fridge Freezer S – Storage Cupboard W – Wardrobe WD – Washer/Dryer

The floorplans provided are intended to only give a general indication of the proposed floor layout, are not drawn to scale and are not intended to form part of any offer, contract, warranty or representation. Measurements are given to the widest point, are approximate and are given as a guide only. They must not be relied upon as a statement or representation of fact. Do not use these measurements for carpet sizes, appliance spaces or items of furniture. Kitchen, bathroom and utility layouts may differ to build, and specific plot sizes and layouts may vary within the same unit type. For further clarification regarding specific individual plots, please ask our Sales Advisors. October 2020



INSPIRED BY YOU
BUILT FOR YOU

SPECIFICATION

KITCHEN

- Contemporary gloss handleless kitchen from Symphony with Dusk Grey base and larder units and Pearl Grey wall units
- Silestone Rogui colour quartz worktops with matching upstand and cashmere coloured glass splashback in behind hob
- Supra single bowl undermounted stainless steel sink with square dual-lever chrome mixer tap
- Bosch integrated appliances including:
 - induction hob with TouchSelect and PowerBoost functions
 - multifunction oven with LED display and pop-out controls
 - stainless steel pyramid chimney extractor hood
- Zanussi integrated appliances including:
 - dishwasher
 - fridge/freezer
 - washer dryer
- LED strip lights to underside of wall units

BATHROOM

- Large format porcelain tiles in Raven grey to floor
- Large format porcelain tiles in Slate grey to boxing behind basin and WC, to skirting and full-height around bath
- Contemporary bath in white with curved glass shower screen and bath panel in white
- Vado chrome thermostatic bath and shower mixer tap with matching shower attachment, slider and rail
- Vitra semi-recessed basin with half pedestal and Grohe chrome mixer tap
- Vitra back-to-wall WC with soft-close seat, concealed cistern and polished chrome flush plate
- Chrome ladder heated towel radiator
- Bespoke three-door mirrored vanity above basin with internal shaver socket

EN SUITE*

- Large format porcelain tiles in Raven grey to floor
- Large format porcelain tiles in Slate grey to splashback behind basin, to skirting and full-height around shower enclosure (selected apartments only)
- Vitra semi-pedestal basin with Grohe chrome mixer tap
- Vitra close-coupled WC
- Shower tray featuring Ideal Standard bi-fold door and Bristan wall-mounted shower attachment, slider and rail (selected apartments only)

BEDROOM

- Regency Cabaret carpet in Nickel grey colour
- Built-in wardrobe to master bedroom with full-height satin white doors, with mirror to the inside of one door, upper storage area and hanging rail

ELECTRICAL

- LED downlighters in white to open-plan living/kitchen/dining, bathroom, en suite and hallway
- Pendant light to bedroom(s)
- Brushed stainless steel switches and sockets throughout
- Phone and data points to living room and bedroom one
- TV and satellite connection point to living room pre-wired for SkyQ
- TV connection point to first and second bedroom

INTERIOR FINISHES

- Oak wood-effect laminate to open-plan living/kitchen/dining and hallway
- Satin finish chrome ironmongery throughout
- White satin paint finish to joinery throughout
- White matt emulsion paint finish to walls and ceilings throughout

SECURITY & PEACE OF MIND

- Front entrance door with multipoint locking system, security chain and door viewer
- Entrotec audio/visual door entry system
- Mains operated smoke, heat and carbon monoxide detectors with battery backup
- 12-year LABC warranty

HEATING

- Heating and hot water provided by a combined heat and power (CHP) system
- Honeywell programmable thermostat

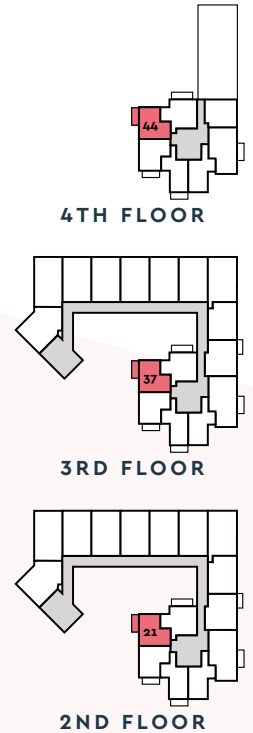
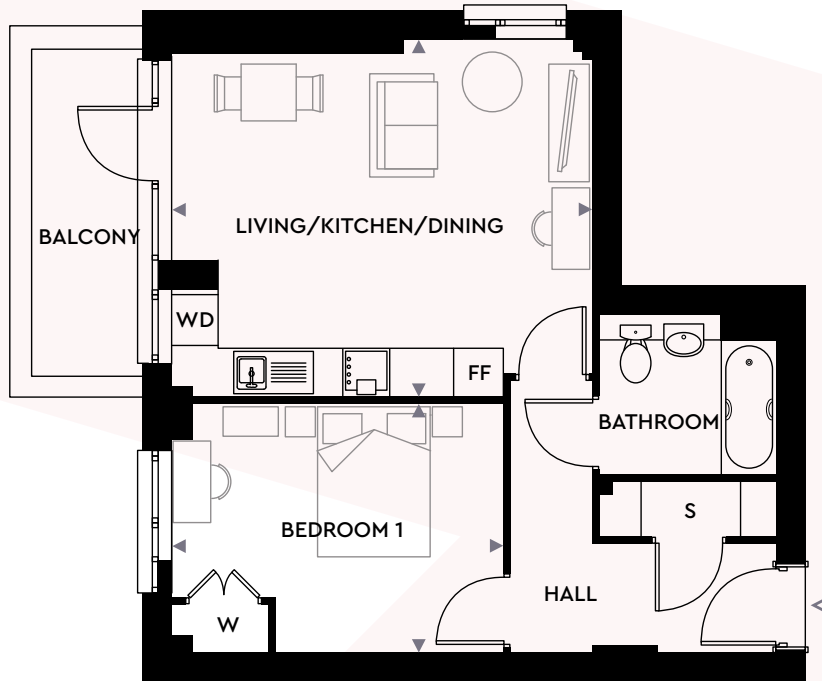
ENERGY EFFICIENCY

- Energy Performance Certificate (EPC) rating between 83 and 86 (B)
- Built to latest Building Regulation standards
- Aluminium-framed double-glazed windows

EXTERIOR

- Balconies to selected apartments:
 - Inset balconies with paving slab to floor
 - Cantilever balconies with timber decking to floor
- Secure residents' cycle store
- First floor communal space for use by all residents, with AstroTurf, paving and landscaping, children's play equipment and timber seating
- Fourth floor roof garden for use by all residents, with paving, landscaping and stone seating

*Refer to floorplans for information on apartments with en suites. The above specification shown is for general guidance and is subject to change due to Optivo's policy of continuous improvement. The finished product may vary from the information provided. On-site parking is specifically allocated to selected properties and cannot be changed or transferred. Please speak to our Sales Advisor for more details. *Refer to floorplans for information on apartments with en suites. October 2020.



GROSS INTERNAL AREA: 50.0 SQ. M. | 538.1 SQ. FT.

LIVING/KITCHEN/DINING

5.30M X 4.50M | 17'3" X 14'7"

BEDROOM 1

4.16M X 3.13M | 13'6" X 10'2"

FF – Fridge Freezer S – Storage Cupboard W – Wardrobe WD – Washer/Dryer

The floorplans provided are intended to only give a general indication of the proposed floor layout, are not drawn to scale and are not intended to form part of any offer, contract, warranty or representation. Measurements are given to the widest point, are approximate and are given as a guide only. They must not be relied upon as a statement or representation of fact. Do not use these measurements for carpet sizes, appliance spaces or items of furniture. Kitchen, bathroom and utility layouts may differ to build, and specific plot sizes and layouts may vary within the same unit type. For further clarification regarding specific individual plots, please ask our Sales Advisors. October 2020



INSPIRED BY YOU
BUILT FOR YOU

SPECIFICATION

KITCHEN

- Contemporary gloss handleless kitchen from Symphony with Dusk Grey base and larder units and Pearl Grey wall units
- Silestone Rogui colour quartz worktops with matching upstand and cashmere coloured glass splashback in behind hob
- Supra single bowl undermounted stainless steel sink with square dual-lever chrome mixer tap
- Bosch integrated appliances including:
 - induction hob with TouchSelect and PowerBoost functions
 - multifunction oven with LED display and pop-out controls
 - stainless steel pyramid chimney extractor hood
- Zanussi integrated appliances including:
 - dishwasher
 - fridge/freezer
 - washer dryer
- LED strip lights to underside of wall units

BATHROOM

- Large format porcelain tiles in Raven grey to floor
- Large format porcelain tiles in Slate grey to boxing behind basin and WC, to skirting and full-height around bath
- Contemporary bath in white with curved glass shower screen and bath panel in white
- Vado chrome thermostatic bath and shower mixer tap with matching shower attachment, slider and rail
- Vitra semi-recessed basin with half pedestal and Grohe chrome mixer tap
- Vitra back-to-wall WC with soft-close seat, concealed cistern and polished chrome flush plate
- Chrome ladder heated towel radiator
- Bespoke three-door mirrored vanity above basin with internal shaver socket

EN SUITE*

- Large format porcelain tiles in Raven grey to floor
- Large format porcelain tiles in Slate grey to splashback behind basin, to skirting and full-height around shower enclosure (selected apartments only)
- Vitra semi-pedestal basin with Grohe chrome mixer tap
- Vitra close-coupled WC
- Shower tray featuring Ideal Standard bi-fold door and Bristan wall-mounted shower attachment, slider and rail (selected apartments only)

BEDROOM

- Regency Cabaret carpet in Nickel grey colour
- Built-in wardrobe to master bedroom with full-height satin white doors, with mirror to the inside of one door, upper storage area and hanging rail

ELECTRICAL

- LED downlighters in white to open-plan living/kitchen/dining, bathroom, en suite and hallway
- Pendant light to bedroom(s)
- Brushed stainless steel switches and sockets throughout
- Phone and data points to living room and bedroom one
- TV and satellite connection point to living room pre-wired for SkyQ
- TV connection point to first and second bedroom

INTERIOR FINISHES

- Oak wood-effect laminate to open-plan living/kitchen/dining and hallway
- Satin finish chrome ironmongery throughout
- White satin paint finish to joinery throughout
- White matt emulsion paint finish to walls and ceilings throughout

SECURITY & PEACE OF MIND

- Front entrance door with multipoint locking system, security chain and door viewer
- Entrotec audio/visual door entry system
- Mains operated smoke, heat and carbon monoxide detectors with battery backup
- 12-year LABC warranty

HEATING

- Heating and hot water provided by a combined heat and power (CHP) system
- Honeywell programmable thermostat

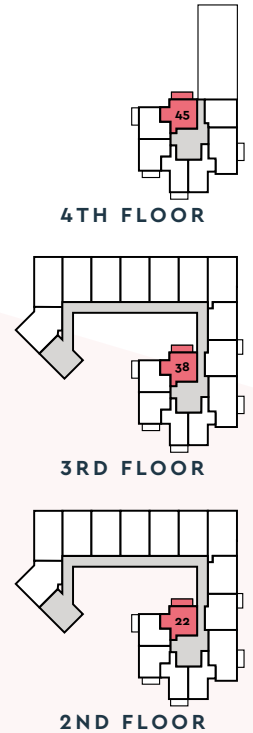
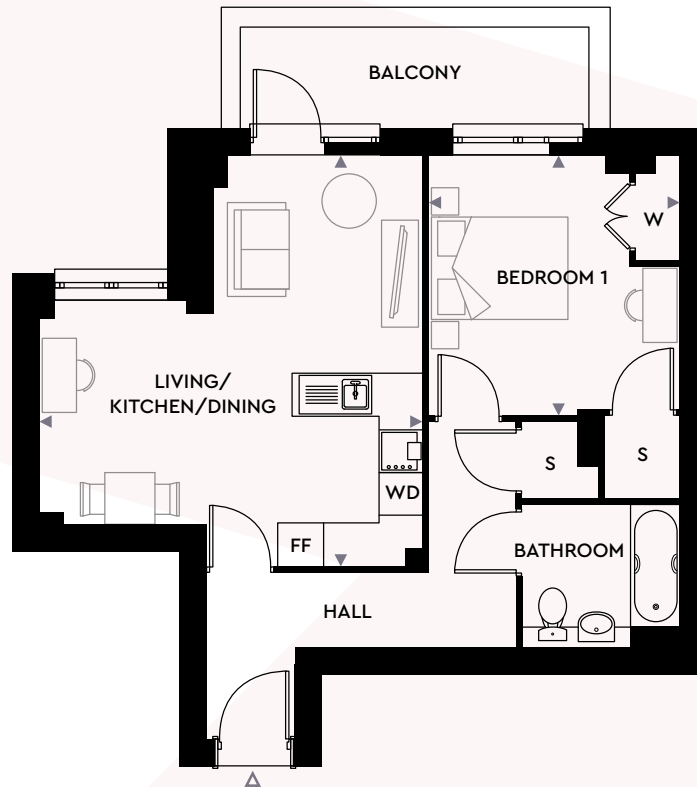
ENERGY EFFICIENCY

- Energy Performance Certificate (EPC) rating between 83 and 86 (B)
- Built to latest Building Regulation standards
- Aluminium-framed double-glazed windows

EXTERIOR

- Balconies to selected apartments:
 - Inset balconies with paving slab to floor
 - Cantilever balconies with timber decking to floor
- Secure residents' cycle store
- First floor communal space for use by all residents, with AstroTurf, paving and landscaping, children's play equipment and timber seating
- Fourth floor roof garden for use by all residents, with paving, landscaping and stone seating

*Refer to floorplans for information on apartments with en suites. The above specification shown is for general guidance and is subject to change due to Optivo's policy of continuous improvement. The finished product may vary from the information provided. On-site parking is specifically allocated to selected properties and cannot be changed or transferred. Please speak to our Sales Advisor for more details. *Refer to floorplans for information on apartments with en suites. October 2020.



GROSS INTERNAL AREA: 54.0 SQ. M. | 581.2 SQ. FT.

LIVING/KITCHEN/DINING

5.71M X 5.42M | 18'7" X 17'7"

BEDROOM 1

3.61M X 3.50M | 11'8" X 11'4"

FF – Fridge Freezer S – Storage Cupboard W – Wardrobe WD – Washer/Dryer

The floorplans provided are intended to only give a general indication of the proposed floor layout, are not drawn to scale and are not intended to form part of any offer, contract, warranty or representation. Measurements are given to the widest point, are approximate and are given as a guide only. They must not be relied upon as a statement or representation of fact. Do not use these measurements for carpet sizes, appliance spaces or items of furniture. Kitchen, bathroom and utility layouts may differ to build, and specific plot sizes and layouts may vary within the same unit type. For further clarification regarding specific individual plots, please ask our Sales Advisors. October 2020



INSPIRED BY YOU
BUILT FOR YOU

SPECIFICATION

KITCHEN

- Contemporary gloss handleless kitchen from Symphony with Dusk Grey base and larder units and Pearl Grey wall units
- Silestone Rogui colour quartz worktops with matching upstand and cashmere coloured glass splashback in behind hob
- Supra single bowl undermounted stainless steel sink with square dual-lever chrome mixer tap
- Bosch integrated appliances including:
 - induction hob with TouchSelect and PowerBoost functions
 - multifunction oven with LED display and pop-out controls
 - stainless steel pyramid chimney extractor hood
- Zanussi integrated appliances including:
 - dishwasher
 - fridge/freezer
 - washer dryer
- LED strip lights to underside of wall units

BATHROOM

- Large format porcelain tiles in Raven grey to floor
- Large format porcelain tiles in Slate grey to boxing behind basin and WC, to skirting and full-height around bath
- Contemporary bath in white with curved glass shower screen and bath panel in white
- Vado chrome thermostatic bath and shower mixer tap with matching shower attachment, slider and rail
- Vitra semi-recessed basin with half pedestal and Grohe chrome mixer tap
- Vitra back-to-wall WC with soft-close seat, concealed cistern and polished chrome flush plate
- Chrome ladder heated towel radiator
- Bespoke three-door mirrored vanity above basin with internal shaver socket

EN SUITE*

- Large format porcelain tiles in Raven grey to floor
- Large format porcelain tiles in Slate grey to splashback behind basin, to skirting and full-height around shower enclosure (selected apartments only)
- Vitra semi-pedestal basin with Grohe chrome mixer tap
- Vitra close-coupled WC
- Shower tray featuring Ideal Standard bi-fold door and Bristan wall-mounted shower attachment, slider and rail (selected apartments only)

BEDROOM

- Regency Cabaret carpet in Nickel grey colour
- Built-in wardrobe to master bedroom with full-height satin white doors, with mirror to the inside of one door, upper storage area and hanging rail

ELECTRICAL

- LED downlighters in white to open-plan living/kitchen/dining, bathroom, en suite and hallway
- Pendant light to bedroom(s)
- Brushed stainless steel switches and sockets throughout
- Phone and data points to living room and bedroom one
- TV and satellite connection point to living room pre-wired for SkyQ
- TV connection point to first and second bedroom

INTERIOR FINISHES

- Oak wood-effect laminate to open-plan living/kitchen/dining and hallway
- Satin finish chrome ironmongery throughout
- White satin paint finish to joinery throughout
- White matt emulsion paint finish to walls and ceilings throughout

SECURITY & PEACE OF MIND

- Front entrance door with multipoint locking system, security chain and door viewer
- Entrotec audio/visual door entry system
- Mains operated smoke, heat and carbon monoxide detectors with battery backup
- 12-year LABC warranty

HEATING

- Heating and hot water provided by a combined heat and power (CHP) system
- Honeywell programmable thermostat

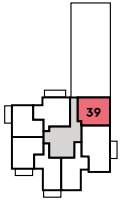
ENERGY EFFICIENCY

- Energy Performance Certificate (EPC) rating between 83 and 86 (B)
- Built to latest Building Regulation standards
- Aluminium-framed double-glazed windows

EXTERIOR

- Balconies to selected apartments:
 - Inset balconies with paving slab to floor
 - Cantilever balconies with timber decking to floor
- Secure residents' cycle store
- First floor communal space for use by all residents, with AstroTurf, paving and landscaping, children's play equipment and timber seating
- Fourth floor roof garden for use by all residents, with paving, landscaping and stone seating

*Refer to floorplans for information on apartments with en suites. The above specification shown is for general guidance and is subject to change due to Optivo's policy of continuous improvement. The finished product may vary from the information provided. On-site parking is specifically allocated to selected properties and cannot be changed or transferred. Please speak to our Sales Advisor for more details. *Refer to floorplans for information on apartments with en suites. October 2020.



4TH FLOOR



GROSS INTERNAL AREA: 50.0 SQ. M. | 538.1 SQ. FT.

LIVING/KITCHEN/DINING

6.68M X 3.60M | 21'9" X 11'8"

BEDROOM 1

3.46M X 3.28M | 11'3" X 10'7"

FF – Fridge Freezer S – Storage Cupboard W – Wardrobe WD – Washer/Dryer

The floorplans provided are intended to only give a general indication of the proposed floor layout, are not drawn to scale and are not intended to form part of any offer, contract, warranty or representation. Measurements are given to the widest point, are approximate and are given as a guide only. They must not be relied upon as a statement or representation of fact. Do not use these measurements for carpet sizes, appliance spaces or items of furniture. Kitchen, bathroom and utility layouts may differ to build, and specific plot sizes and layouts may vary within the same unit type. For further clarification regarding specific individual plots, please ask our Sales Advisors. October 2020



INSPIRED BY YOU
BUILT FOR YOU

SPECIFICATION

KITCHEN

- Contemporary gloss handleless kitchen from Symphony with Dusk Grey base and larder units and Pearl Grey wall units
- Silestone Rogui colour quartz worktops with matching upstand and cashmere coloured glass splashback in behind hob
- Supra single bowl undermounted stainless steel sink with square dual-lever chrome mixer tap
- Bosch integrated appliances including:
 - induction hob with TouchSelect and PowerBoost functions
 - multifunction oven with LED display and pop-out controls
 - stainless steel pyramid chimney extractor hood
- Zanussi integrated appliances including:
 - dishwasher
 - fridge/freezer
 - washer dryer
- LED strip lights to underside of wall units

BATHROOM

- Large format porcelain tiles in Raven grey to floor
- Large format porcelain tiles in Slate grey to boxing behind basin and WC, to skirting and full-height around bath
- Contemporary bath in white with curved glass shower screen and bath panel in white
- Vado chrome thermostatic bath and shower mixer tap with matching shower attachment, slider and rail
- Vitra semi-recessed basin with half pedestal and Grohe chrome mixer tap
- Vitra back-to-wall WC with soft-close seat, concealed cistern and polished chrome flush plate
- Chrome ladder heated towel radiator
- Bespoke three-door mirrored vanity above basin with internal shaver socket

EN SUITE*

- Large format porcelain tiles in Raven grey to floor
- Large format porcelain tiles in Slate grey to splashback behind basin, to skirting and full-height around shower enclosure (selected apartments only)
- Vitra semi-pedestal basin with Grohe chrome mixer tap
- Vitra close-coupled WC
- Shower tray featuring Ideal Standard bi-fold door and Bristan wall-mounted shower attachment, slider and rail (selected apartments only)

BEDROOM

- Regency Cabaret carpet in Nickel grey colour
- Built-in wardrobe to master bedroom with full-height satin white doors, with mirror to the inside of one door, upper storage area and hanging rail

ELECTRICAL

- LED downlighters in white to open-plan living/kitchen/dining, bathroom, en suite and hallway
- Pendant light to bedroom(s)
- Brushed stainless steel switches and sockets throughout
- Phone and data points to living room and bedroom one
- TV and satellite connection point to living room pre-wired for SkyQ
- TV connection point to first and second bedroom

INTERIOR FINISHES

- Oak wood-effect laminate to open-plan living/kitchen/dining and hallway
- Satin finish chrome ironmongery throughout
- White satin paint finish to joinery throughout
- White matt emulsion paint finish to walls and ceilings throughout

SECURITY & PEACE OF MIND

- Front entrance door with multipoint locking system, security chain and door viewer
- Entrotec audio/visual door entry system
- Mains operated smoke, heat and carbon monoxide detectors with battery backup
- 12-year LABC warranty

HEATING

- Heating and hot water provided by a combined heat and power (CHP) system
- Honeywell programmable thermostat

ENERGY EFFICIENCY

- Energy Performance Certificate (EPC) rating between 83 and 86 (B)
- Built to latest Building Regulation standards
- Aluminium-framed double-glazed windows

EXTERIOR

- Balconies to selected apartments:
 - Inset balconies with paving slab to floor
 - Cantilever balconies with timber decking to floor
- Secure residents' cycle store
- First floor communal space for use by all residents, with AstroTurf, paving and landscaping, children's play equipment and timber seating
- Fourth floor roof garden for use by all residents, with paving, landscaping and stone seating

*Refer to floorplans for information on apartments with en suites. The above specification shown is for general guidance and is subject to change due to Optivo's policy of continuous improvement. The finished product may vary from the information provided. On-site parking is specifically allocated to selected properties and cannot be changed or transferred. Please speak to our Sales Advisor for more details. *Refer to floorplans for information on apartments with en suites. October 2020.