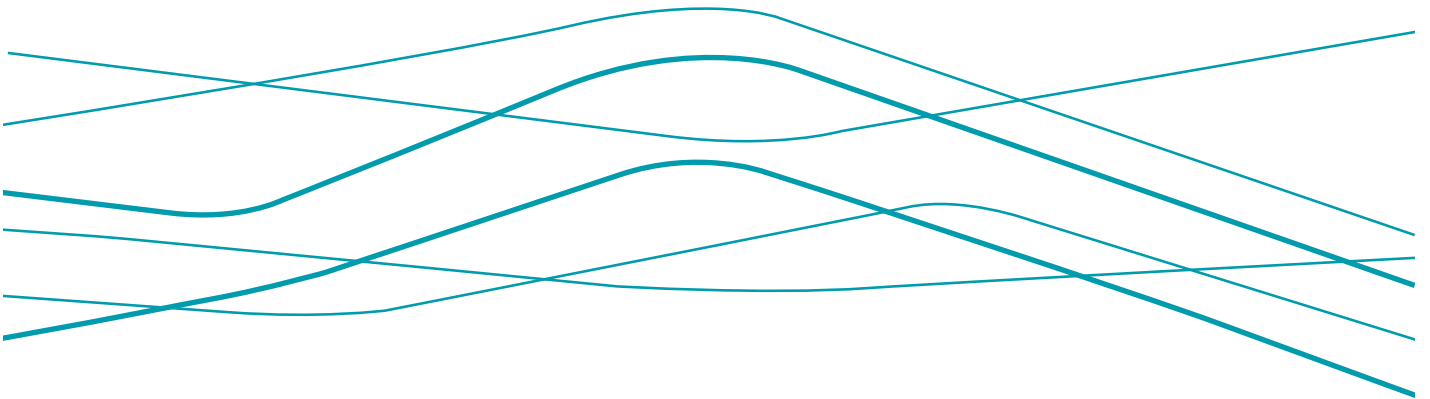


MOTION

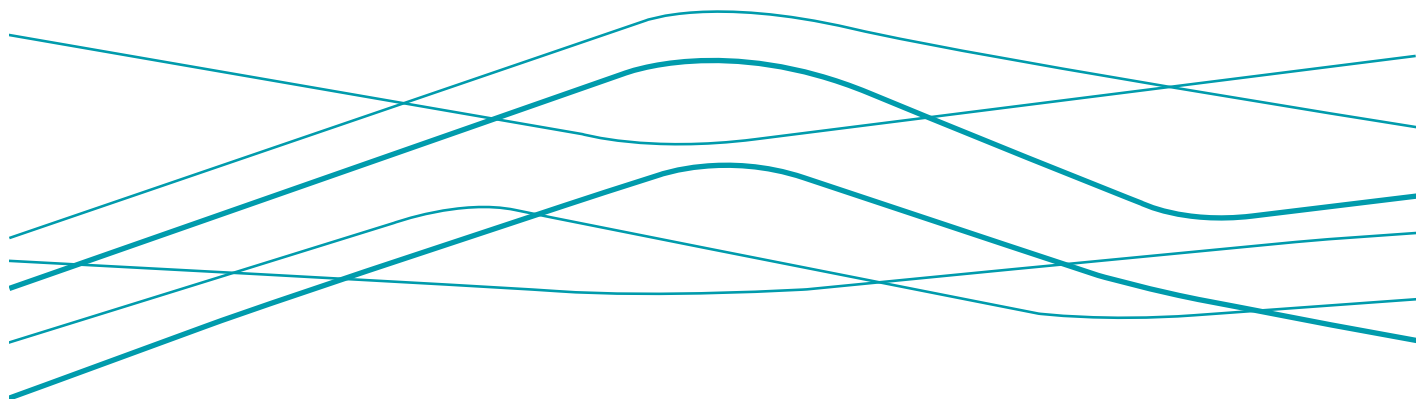
LEA BRIDGE LONDON E10



THE SHARED OWNERSHIP COLLECTION

THE TOWER | 2 & 3 BEDROOM

THE TOWER MOTION



Computer generated image is indicative only

Welcome to The Tower at Motion

Look out across the green expanse of the Lea Valley and towards one of the world's most exciting cities. Across 17 floors of The Tower which elegantly twists as it rises, you'll find a stunning collection of two & three bedroom apartments set around a beautifully landscaped resident's courtyard, the perfect place to relax or meet friends.

The interiors are designed to offer the best of modern open-plan living with stylish kitchens and sleek appliances. Located close to an extensive cycle path network, The Tower also provides excellent public transport links that connect you to the best of the capital within minutes.

This is life in Motion - made for more of the life you want.



Photography of Motion Shared Ownership show apartment.

STEP INSIDE

Within our landmark walls, Motion offers residents contemporary, fashionable interiors in the 2 and 3 bedroom apartments.

Every home is designed for active residents. The orientation of each apartment allows for warming sunlight and fresh breezes, while many apartments boast incredible views of the local area and the Central London skyline.

THE DETAIL IN MOTION

Kitchen

Contemporary and stylish bespoke kitchen designed for each individual apartment and featuring high gloss doors and drawers with laminate worktops and matching upstands. Energy efficient and sleek appliances have been selected to complement the look and design of the kitchen.

- Bosch ceramic hob with white glass splash back (where applicable)
- Bosch integrated single oven
- Bosch integrated microwave
- Zanussi integrated fridge/freezer
- Zanussi integrated dishwasher
- Cooker hood – integrated or ceiling hood where applicable
- Blanco stainless steel under mounted sink with contemporary Blanco mixer tap
- LED feature lighting to wall units
- Soft close to doors and drawers
- Integrated pull out waste bin with recycling facility
- Zanussi washer/dryer in hallway cupboard

Kitchen designs and layouts vary; please speak to our Sales Executives for further information



Master En-suite

Our elegant and stylish master en-suites feature white Ideal Standard sanitary ware and complementing mixer taps and showers by Hansgrohe with a bespoke feature mirror with LED lighting adding a hint of sophistication.

- Low profile shower tray with glass sliding door
- Dark wood effect feature mirror with LED lighting and matching vanity tops
- Large format wall and floor tiles
- Heated chrome towel rail

Main Bathroom

Ideal Standard sanitary ware combined with Hansgrohe taps and showers are used throughout and dark wood effect vanity tops add a touch of elegance to create stunning bathrooms.

- Bath with shower over and glass screen
- Dark wood effect vanity tops
- Large format wall and floor tiles
- Heated chrome towel rail
- Mirror included where there is no ensuite

Decorative Finishes

To achieve a contemporary style interior we have selected clean lines for doors, architraves and skirting, keeping everything white or in subtle colours to create a calm and tranquil environment.

- Painted solid front entrance door with multi-point locking system
- High efficiency double glazed aluminium timber composite windows
- White painted flush internal doors with contemporary satin stainless steel ironmongery
- Built in mirrored wardrobe with sliding doors to master bedroom
- Square cut skirting and architrave
- Walls painted in white emulsion
- Smooth ceilings in white emulsion

Floor Finishes

- Amtico flooring to entrance hall and kitchen/living/dining room
- Carpet to bedrooms
- Large format tiles to bathroom and en-suites

Heating and Water

- Underfloor heating
- Heated chrome towel rails to bathroom and en-suites
- Heating via communal heating plant with heat meters in each apartment
- Mechanical Ventilation with Heat Recovery - bringing filtered, fresh air into the apartment

Electrical

- Downlights to kitchen/living/dining room, family bathroom and en-suites
- Pendant fittings in selected locations to entrance hall and all bedrooms
- LED feature lighting to under wall units in kitchen
- White moulded electrical switches and sockets throughout
- Shaver points to bathroom and en-suite
- TV points to living/dining room and all bedrooms
- High and Low wall hung TV to living/dining area outlets
- Phone points to living/dining room, master and second bedrooms
- Wiring for customer's own broadband connection
- Wiring for optional superfast broadband*
- Pre-wired for customer's own Sky Q connection*
- Video entry system to every apartment, linked to main entrance door
- External lighting to balcony/terrace
- Hard-wired smoke and heat detectors
- Sprinkler system to all apartments and communal areas

External Finishes

- Thermowood decking to balconies
- White glass privacy screens between balconies

Communal Areas

- Fob controlled access system to entrance lobby
- Lift access to all floors
- Cycle and bin storage space
- Letterboxes provided for all apartments within communal entrance lobbies

Parking

- Parking is available on 3 bedroom apartments only. Speak to the sales advisor for more information
- Fob access control to basement parking via communal lifts and access gate

General

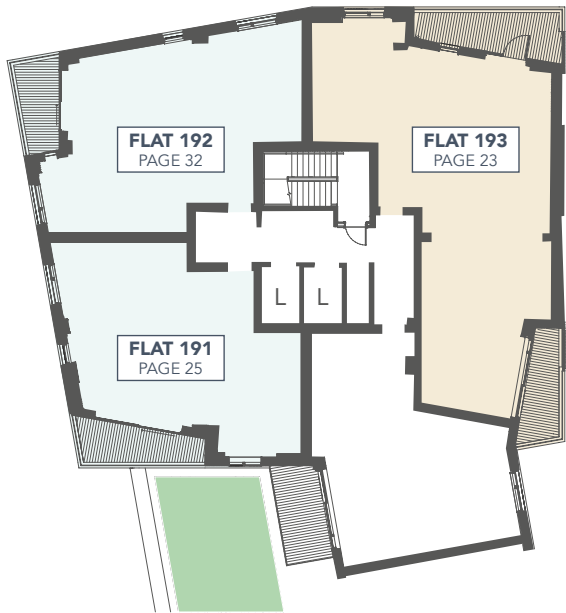
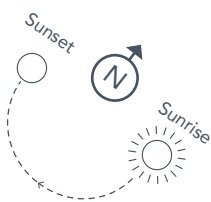
- 10 year NHBC warranty
- 250 year lease
- A service charge will be payable for the maintenance of the shared facilities and communal areas

*Subject to purchaser's own subscription.

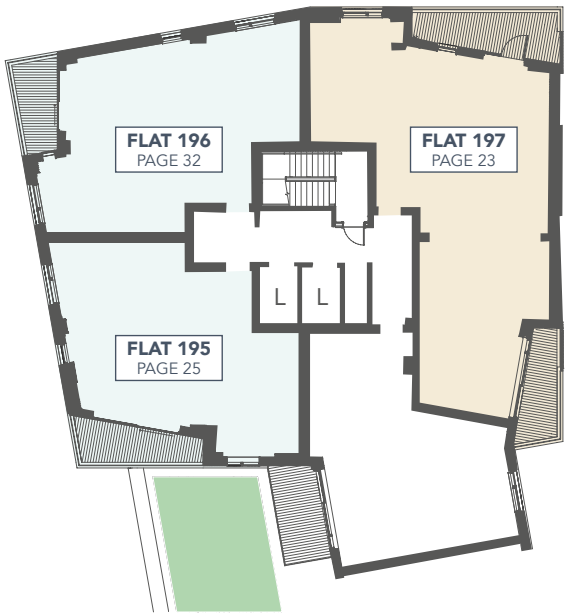
The apartment building/s and non-adopted areas at Motion will be maintained by a management company of which every home owner will become a member. A managing agent has been appointed to maintain these areas and a service charge will be payable by each home owner for the services provided.

We are unable to accommodate any individual changes, additions or amendments to the specification, layout or plans to any individual home. Please note that it may not be possible to obtain the products as referred to in the specification; in such cases a similar alternative will be provided. Hill and Peabody reserve the right to make these changes as required.

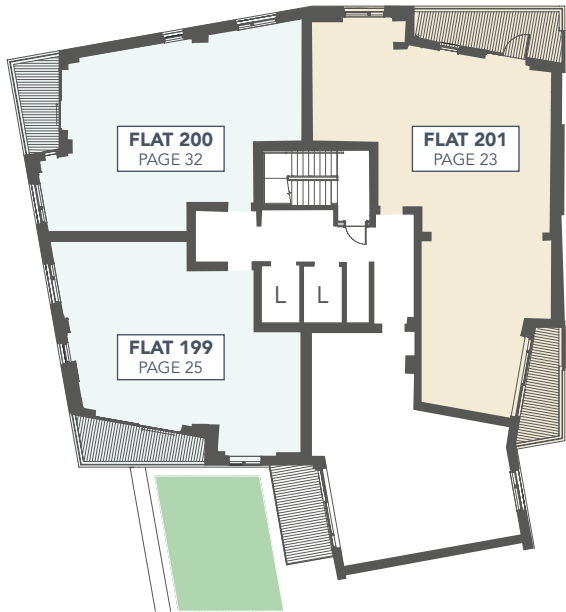




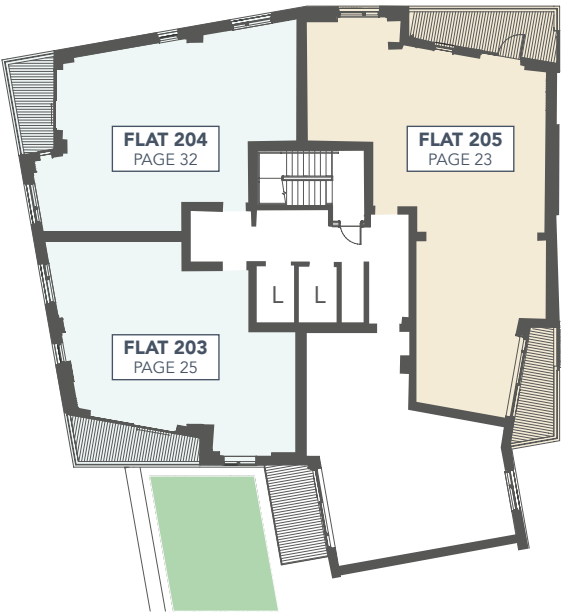
FIRST FLOOR



SECOND FLOOR

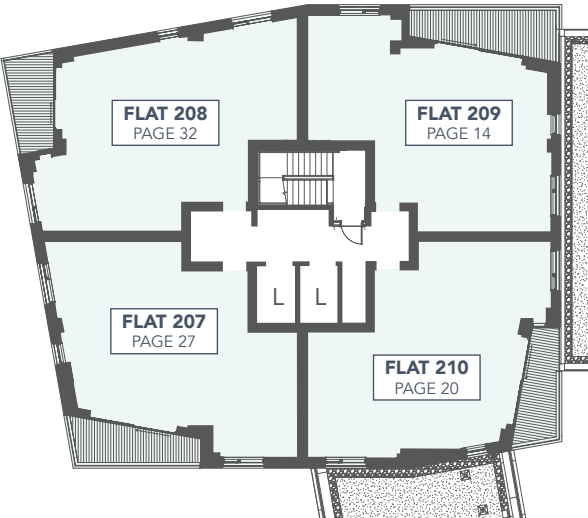
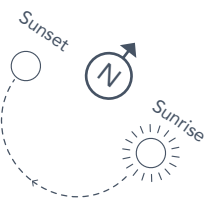


THIRD FLOOR

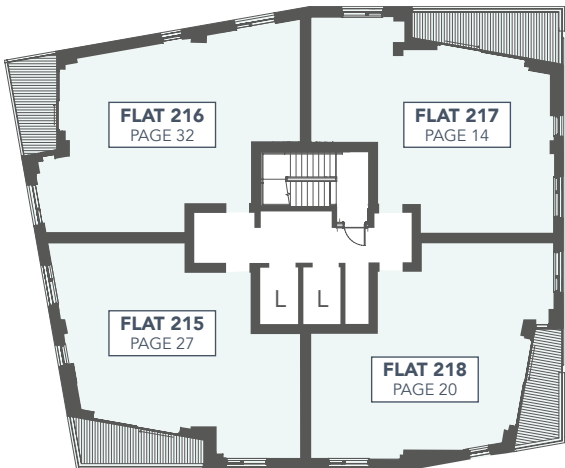


FOURTH FLOOR

TWO BEDROOM THREE BEDROOM

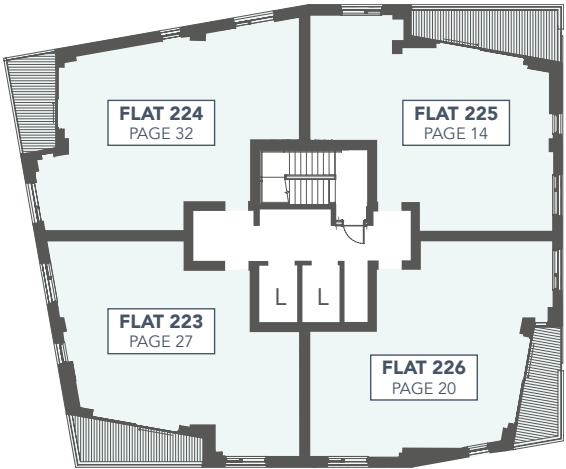
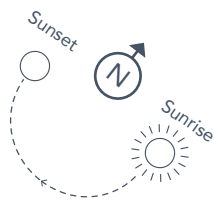


FIFTH FLOOR

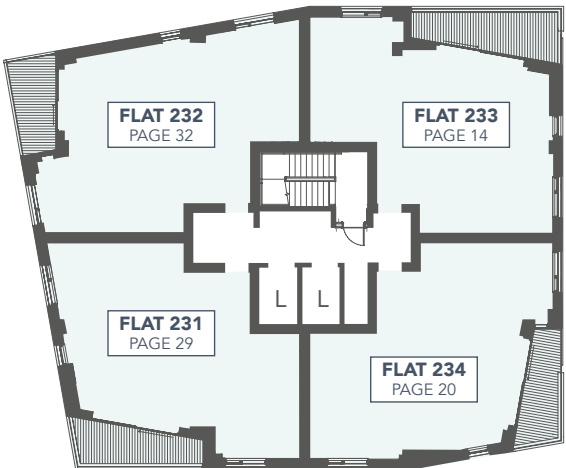


SEVENTH FLOOR

 TWO BEDROOM  THREE BEDROOM

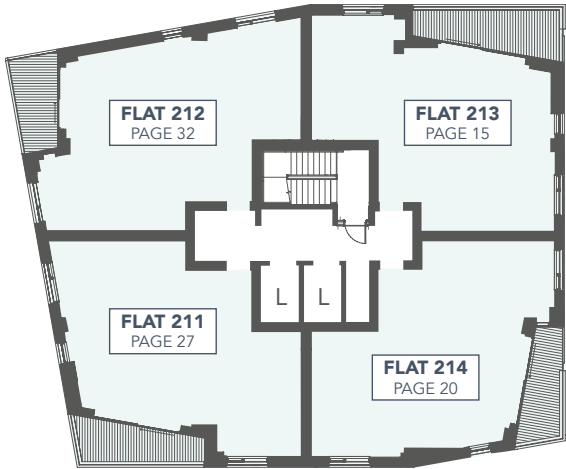


NINTH FLOOR

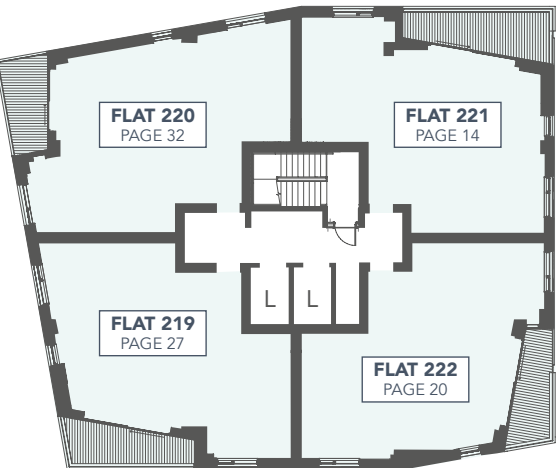


ELEVENTH FLOOR

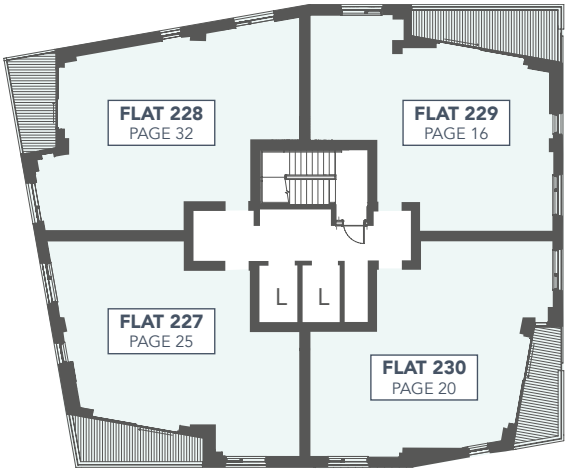
 TWO BEDROOM  THREE BEDROOM



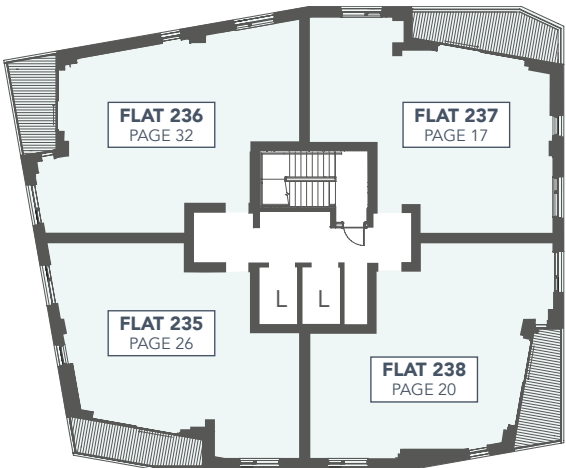
SIXTH FLOOR



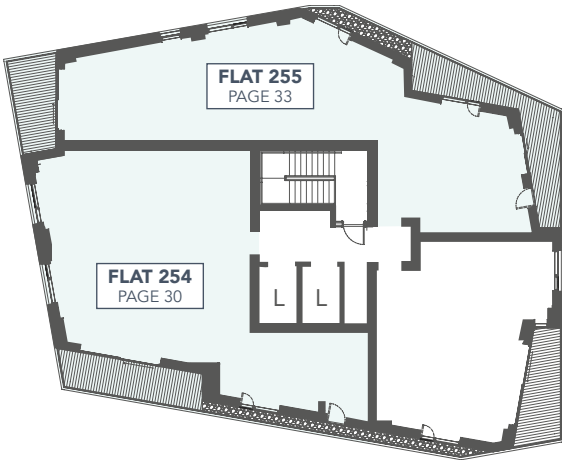
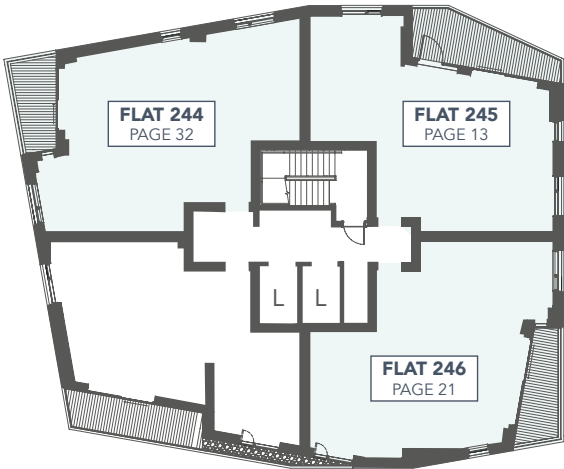
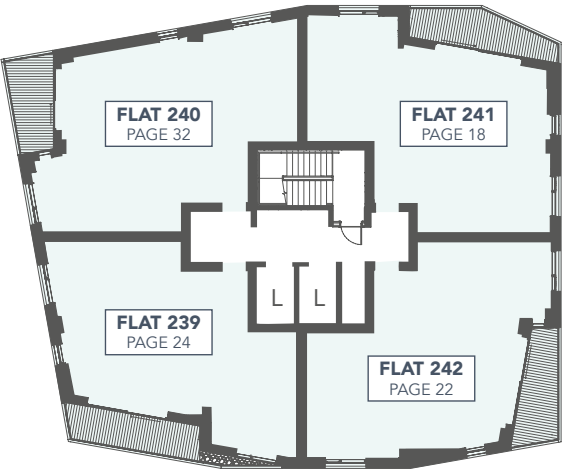
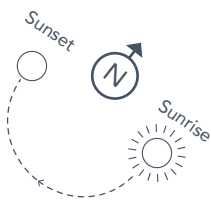
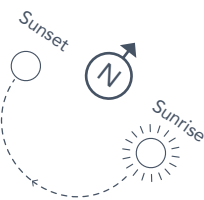
EIGHTH FLOOR



TENTH FLOOR



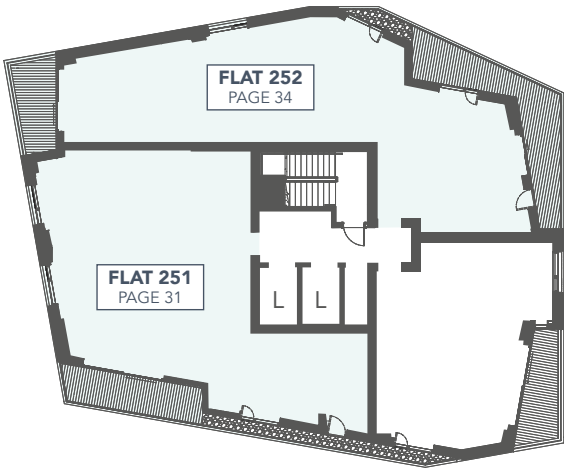
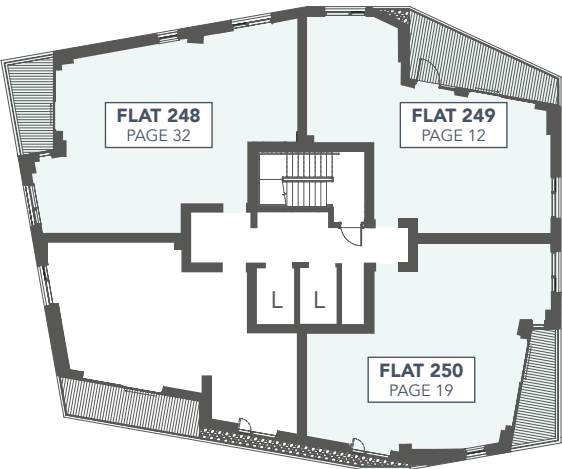
TWELFTH FLOOR



THIRTEENTH FLOOR

FOURTEENTH FLOOR

SEVENTEENTH FLOOR



FIFTEENTH FLOOR

SIXTEENTH FLOOR

 TWO BEDROOM  THREE BEDROOM



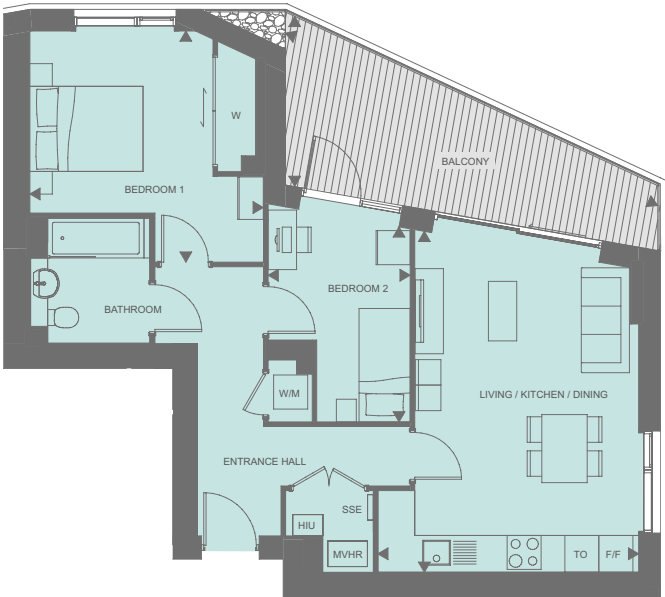
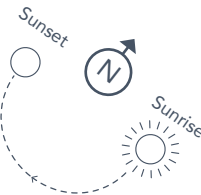
Photography of Motion Shared Ownership show apartment.

NORTH FACING APARTMENTS

FLAT 249
2 BEDROOM

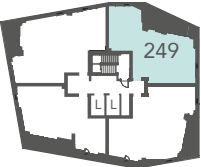
Gross Internal Area: 65.2m²

Living/Kitchen/Dining	6.00 x 4.60	19'6 x 15'
Bedroom 1	4.10 x 4.05	13'4 x 13'2
Bedroom 2	3.40 x 2.50	11'1 x 8'2
Balcony	7.23 x 2.99	23'7 x 9'8



- Measuring points
- SSE - Electrical Meter Board
- HIU - Hydraulic Interface Units
- W/M - Washing Machine
- F/F - Fridge Freezer
- TO - Tall Oven
- W - Built In Wardrobe
- MVHR - Mechanical Ventilation With Heat Recovery

FIFTHTEENTH FLOOR

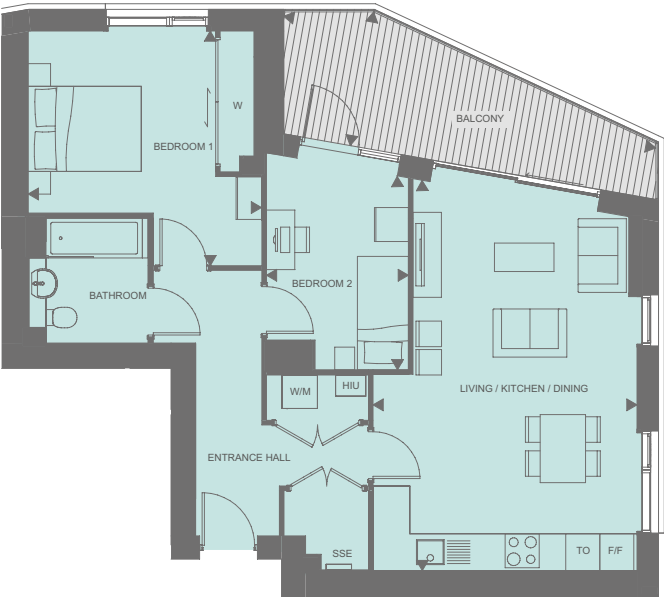
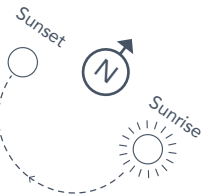


Disclaimer: Apartment layouts provide approximate measurements only. Dimensions, which are taken from the indicated points of measurement, are for guidance only and are not intended to be used for carpet sizes, appliance space or items of furniture. Apartment areas are provided as gross internal areas and may vary. Bathroom and kitchen layouts are indicative only and are subject to change. Wardrobe size and position may vary. Ceiling height may vary within select apartments, please speak to the sales team for more information. All private outdoor space dimensions and areas are approximate and may vary. The information contained within this document does not constitute part of any offer, contract or warranty. Whilst the plans have been prepared with all due care for the convenience of the intending purchaser, the information contained herein is a preliminary guide only.

FLAT 245
2 BEDROOM

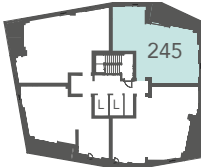
Gross Internal Area: 71.8m²

Living/Kitchen/Dining	6.85 x 4.65	22'4 x 15'2
Bedroom 1	4.10 x 4.10	13'4 x 13'4
Bedroom 2	3.40 x 2.50	11'1 x 8'2
Balcony	6.96 x 2.39	22'8 x 7'8



- Measuring points
- SSE - Electrical Meter Board
- HIU - Hydraulic Interface Units
- W/M - Washing Machine
- F/F - Fridge Freezer
- TO - Tall Oven
- W - Built In Wardrobe
- MVHR - Mechanical Ventilation With Heat Recovery

FOURTEENTH FLOOR

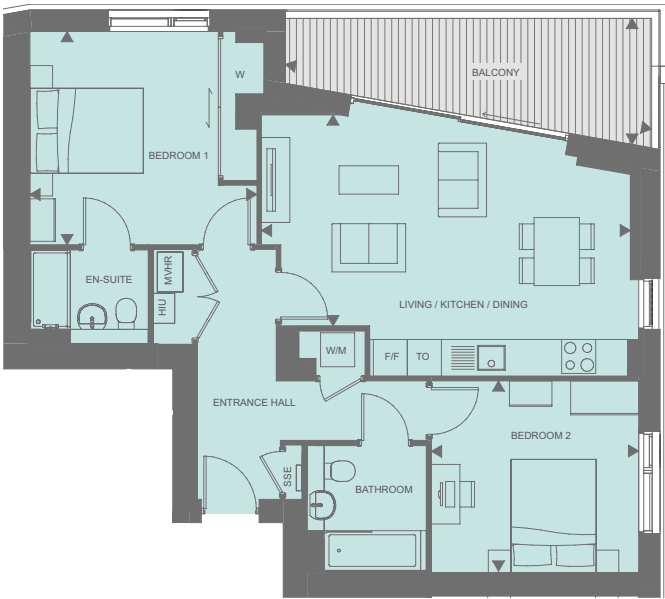
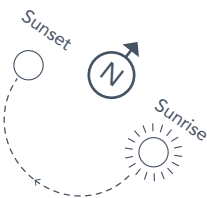


Disclaimer: Apartment layouts provide approximate measurements only. Dimensions, which are taken from the indicated points of measurement, are for guidance only and are not intended to be used for carpet sizes, appliance space or items of furniture. Apartment areas are provided as gross internal areas and may vary. Bathroom and kitchen layouts are indicative only and are subject to change. Wardrobe size and position may vary. Ceiling height may vary within select apartments, please speak to the sales team for more information. All private outdoor space dimensions and areas are approximate and may vary. The information contained within this document does not constitute part of any offer, contract or warranty. Whilst the plans have been prepared with all due care for the convenience of the intending purchaser, the information contained herein is a preliminary guide only.

FLATS 209, 217, 221, 225 & 233
2 BEDROOM

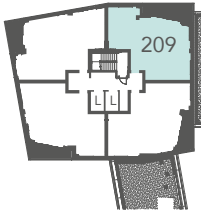
Gross Internal Area: 75.8m²

Living/Kitchen/Dining	6.50 x 3.70	21'3 x 12'1
Bedroom 1	4.00 x 3.75	13'1 x 12'3
Bedroom 2	3.65 x 3.35	11'9 x 10'9
Balcony	6.56 x 2.21	21'5 x 7'2

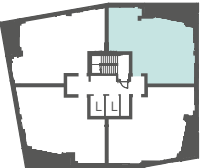


- Measuring points
- SSE - Electrical Meter Board HIU - Hydraulic Interface Units W/M - Washing Machine F/F - Fridge Freezer TO - Tall Oven
- W - Built In Wardrobe MVHR - Mechanical Ventilation With Heat Recovery

FIFTH FLOOR



SEVENTH TO NINTH & ELEVENTH FLOOR
217, 221, 225, 233

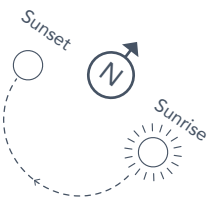


Disclaimer: Apartment layouts provide approximate measurements only. Dimensions, which are taken from the indicated points of measurement, are for guidance only and are not intended to be used for carpet sizes, appliance space or items of furniture. Apartment areas are provided as gross internal areas and may vary. Bathroom and kitchen layouts are indicative only and are subject to change. Wardrobe size and position may vary. Ceiling height may vary within select apartments, please speak to the sales team for more information. All private outdoor space dimensions and areas are approximate and may vary. The information contained within this document does not constitute part of any offer, contract or warranty. Whilst the plans have been prepared with all due care for the convenience of the intending purchaser, the information contained herein is a preliminary guide only.

FLATS 213
2 BEDROOM

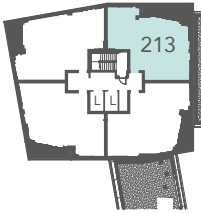
Gross Internal Area: 75.8m²

Living/Kitchen/Dining	6.50 x 3.70	21'3 x 12'1
Bedroom 1	4.00 x 3.75	13'1 x 12'3
Bedroom 2	3.65 x 3.35	11'9 x 10'9
Balcony	6.56 x 2.21	21'5 x 7'2



- Measuring points
- SSE - Electrical Meter Board HIU - Hydraulic Interface Units W/M - Washing Machine F/F - Fridge Freezer TO - Tall Oven
- W - Built In Wardrobe MVHR - Mechanical Ventilation With Heat Recovery

SIXTH FLOOR

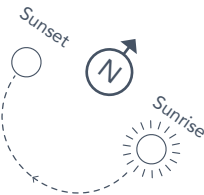


Disclaimer: Apartment layouts provide approximate measurements only. Dimensions, which are taken from the indicated points of measurement, are for guidance only and are not intended to be used for carpet sizes, appliance space or items of furniture. Apartment areas are provided as gross internal areas and may vary. Bathroom and kitchen layouts are indicative only and are subject to change. Wardrobe size and position may vary. Ceiling height may vary within select apartments, please speak to the sales team for more information. All private outdoor space dimensions and areas are approximate and may vary. The information contained within this document does not constitute part of any offer, contract or warranty. Whilst the plans have been prepared with all due care for the convenience of the intending purchaser, the information contained herein is a preliminary guide only.

FLAT 229
2 BEDROOM

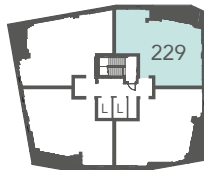
Gross Internal Area: 75.8m²

Living/Kitchen/Dining	6.50 x 3.70	21'3 x 12'1
Bedroom 1	4.00 x 3.75	13'1 x 12'3
Bedroom 2	3.65 x 3.35	11'9 x 10'9
Balcony	6.56 x 2.21	21'5 x 7'2



- Measuring points
- SSE - Electrical Meter Board
- HIU - Hydraulic Interface Units
- W/M - Washing Machine
- F/F - Fridge Freezer
- TO - Tall Oven
- W - Built In Wardrobe
- MVHR - Mechanical Ventilation With Heat Recovery

TENTH FLOOR

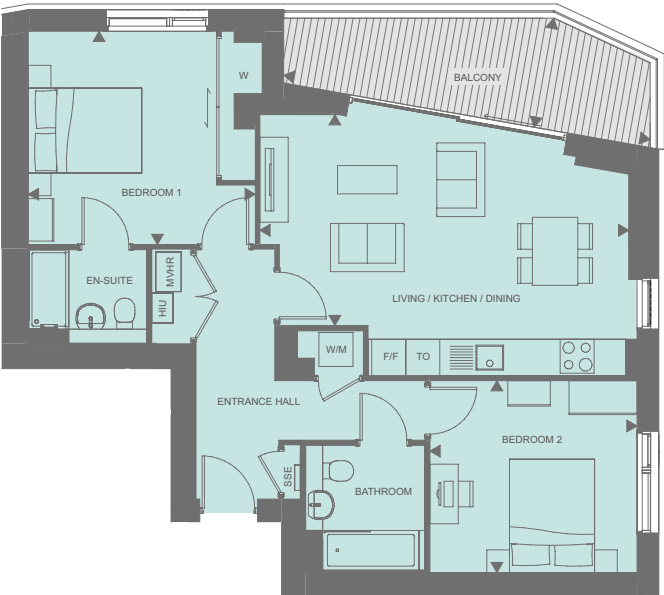
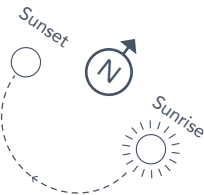


Disclaimer: Apartment layouts provide approximate measurements only. Dimensions, which are taken from the indicated points of measurement, are for guidance only and are not intended to be used for carpet sizes, appliance space or items of furniture. Apartment areas are provided as gross internal areas and may vary. Bathroom and kitchen layouts are indicative only and are subject to change. Wardrobe size and position may vary. Ceiling height may vary within select apartments, please speak to the sales team for more information. All private outdoor space dimensions and areas are approximate and may vary. The information contained within this document does not constitute part of any offer, contract or warranty. Whilst the plans have been prepared with all due care for the convenience of the intending purchaser, the information contained herein is a preliminary guide only.

FLAT 237
2 BEDROOM

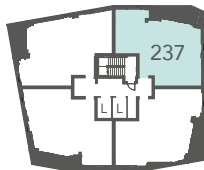
Gross Internal Area: 75.8m²

Living/Kitchen/Dining	6.50 x 3.70	21'3 x 12'1
Bedroom 1	4.00 x 3.75	13'1 x 12'3
Bedroom 2	3.65 x 3.35	11'9 x 10'9
Balcony	6.56 x 1.90	21'5 x 6'2



- Measuring points
- SSE - Electrical Meter Board
- HIU - Hydraulic Interface Units
- W/M - Washing Machine
- F/F - Fridge Freezer
- TO - Tall Oven
- W - Built In Wardrobe
- MVHR - Mechanical Ventilation With Heat Recovery

TWELFTH FLOOR

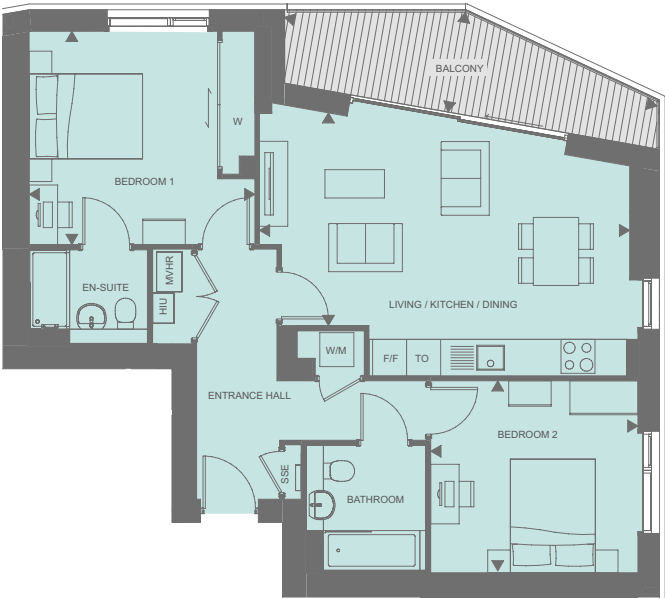
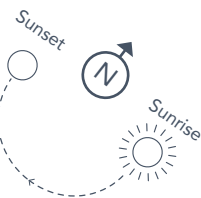


Disclaimer: Apartment layouts provide approximate measurements only. Dimensions, which are taken from the indicated points of measurement, are for guidance only and are not intended to be used for carpet sizes, appliance space or items of furniture. Apartment areas are provided as gross internal areas and may vary. Bathroom and kitchen layouts are indicative only and are subject to change. Wardrobe size and position may vary. Ceiling height may vary within select apartments, please speak to the sales team for more information. All private outdoor space dimensions and areas are approximate and may vary. The information contained within this document does not constitute part of any offer, contract or warranty. Whilst the plans have been prepared with all due care for the convenience of the intending purchaser, the information contained herein is a preliminary guide only.

FLAT 241
2 BEDROOM

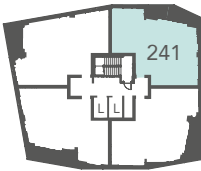
Gross Internal Area: 76.0m²

Living/Kitchen/Dining	6.50 x 3.75	21'3 x 12'3
Bedroom 1	3.95 x 3.75	12'9 x 12'3
Bedroom 2	3.65 x 3.35	11'9 x 10'9
Balcony	6.75 x 1.78	22'1 x 5'8



- Measuring points
- SSE - Electrical Meter Board
- HIU - Hydraulic Interface Units
- W/M - Washing Machine
- F/F - Fridge Freezer
- TO - Tall Oven
- W - Built In Wardrobe
- MVHR - Mechanical Ventilation With Heat Recovery

THIRTEENTH FLOOR



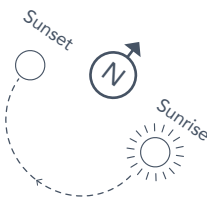
Disclaimer: Apartment layouts provide approximate measurements only. Dimensions, which are taken from the indicated points of measurement, are for guidance only and are not intended to be used for carpet sizes, appliance space or items of furniture. Apartment areas are provided as gross internal areas and may vary. Bathroom and kitchen layouts are indicative only and are subject to change. Wardrobe size and position may vary. Ceiling height may vary within select apartments, please speak to the sales team for more information. All private outdoor space dimensions and areas are approximate and may vary. The information contained within this document does not constitute part of any offer, contract or warranty. Whilst the plans have been prepared with all due care for the convenience of the intending purchaser, the information contained herein is a preliminary guide only.

EAST FACING APARTMENTS

FLAT 250
2 BEDROOM

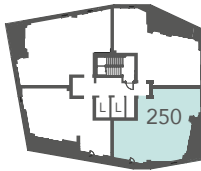
Gross Internal Area: 73.8m²

Living/Kitchen/Dining	5.65 x 4.40	18'5 x 14'4
Bedroom 1	3.85 x 3.30	12'6 x 10'8
Bedroom 2	3.65 x 3.35	11'9 x 10'9
Balcony	5.19 x 1.91	17' x 6'2



- Measuring points
- SSE - Electrical Meter Board
- HIU - Hydraulic Interface Units
- W/M - Washing Machine
- F/F - Fridge Freezer
- TO - Tall Oven
- W - Built In Wardrobe
- MVHR - Mechanical Ventilation With Heat Recovery

FIFTHTEENTH FLOOR



Disclaimer: Apartment layouts provide approximate measurements only. Dimensions, which are taken from the indicated points of measurement, are for guidance only and are not intended to be used for carpet sizes, appliance space or items of furniture. Apartment areas are provided as gross internal areas and may vary. Bathroom and kitchen layouts are indicative only and are subject to change. Wardrobe size and position may vary. Ceiling height may vary within select apartments, please speak to the sales team for more information. All private outdoor space dimensions and areas are approximate and may vary. The information contained within this document does not constitute part of any offer, contract or warranty. Whilst the plans have been prepared with all due care for the convenience of the intending purchaser, the information contained herein is a preliminary guide only.

FLATS 210, 214, 218, 222,
226, 230, 234 & 238

2 BEDROOM

Gross Internal Area: 76.4m²

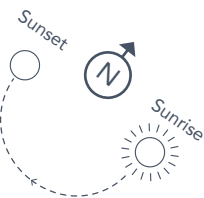
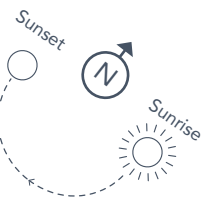
Living/Kitchen/Dining	5.65 x 4.65	18'5 x 15'2
Bedroom 1	4.00 x 3.75	13'1 x 12'3
Bedroom 2	3.65x 3.35	11'9 x 10'9
Balcony	5.19 x 1.92	17' x 6'2

FLAT 246

2 BEDROOM

Gross Internal Area: 76.5m²

Living/Kitchen/Dining	5.65 x 4.40	18'5 x 14'4
Bedroom 1	4.20 x 4.00	13'7 x 13'1
Bedroom 2	3.65x 3.35	11'9 x 10'9
Balcony	5.20 x 1.91	17' x 6'2



► Measuring points

SSE - Electrical Meter Board

HIU - Hydraulic Interface Units

W/M - Washing Machine

F/F - Fridge Freezer

TO - Tall Oven

W - Built In Wardrobe

MVHR - Mechanical Ventilation With Heat Recovery

► Measuring points

SSE - Electrical Meter Board

HIU - Hydraulic Interface Units

W/M - Washing Machine

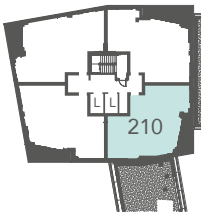
F/F - Fridge Freezer

TO - Tall Oven

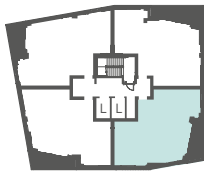
W - Built In Wardrobe

MVHR - Mechanical Ventilation With Heat Recovery

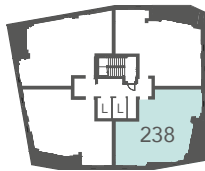
FIFTH FLOOR



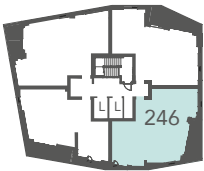
SIXTH TO ELEVENTH FLOOR
214, 218, 222, 226, 230, 234



TWELFTH FLOOR



FOURTEENTH FLOOR



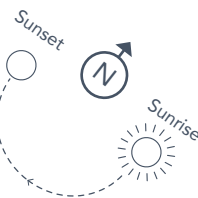
Disclaimer: Apartment layouts provide approximate measurements only. Dimensions, which are taken from the indicated points of measurement, are for guidance only and are not intended to be used for carpet sizes, appliance space or items of furniture. Apartment areas are provided as gross internal areas and may vary. Bathroom and kitchen layouts are indicative only and are subject to change. Wardrobe size and position may vary. Ceiling height may vary within select apartments, please speak to the sales team for more information. All private outdoor space dimensions and areas are approximate and may vary. The information contained within this document does not constitute part of any offer, contract or warranty. Whilst the plans have been prepared with all due care for the convenience of the intending purchaser, the information contained herein is a preliminary guide only.

Disclaimer: Apartment layouts provide approximate measurements only. Dimensions, which are taken from the indicated points of measurement, are for guidance only and are not intended to be used for carpet sizes, appliance space or items of furniture. Apartment areas are provided as gross internal areas and may vary. Bathroom and kitchen layouts are indicative only and are subject to change. Wardrobe size and position may vary. Ceiling height may vary within select apartments, please speak to the sales team for more information. All private outdoor space dimensions and areas are approximate and may vary. The information contained within this document does not constitute part of any offer, contract or warranty. Whilst the plans have been prepared with all due care for the convenience of the intending purchaser, the information contained herein is a preliminary guide only.

FLAT 242
2 BEDROOM

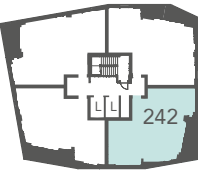
Living/Kitchen/Dining	5.65 x 5.40	18'5 x 14'4
Bedroom 1	4.20 x 4.00	13'7 x 13'1
Bedroom 2	3.65 x 3.35	11'9 x 10'9
Balcony	5.30m x 2.02m	17'3 x 6'6

Gross Internal Area: 76.6m²



- Measuring points
- SSE - Electrical Meter Board
- HIU - Hydraulic Inerface Units
- W/M - Washing Machine
- F/F - Fridge Freezer
- TO - Tall Oven
- W - Built In Wardrobe
- MVHR - Mechanical Ventilation With Heat Recovery

THIRTEENTH FLOOR

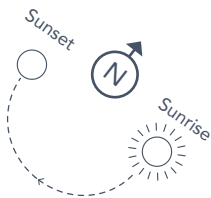


Disclaimer: Apartment layouts provide approximate measurements only. Dimensions, which are taken from the indicated points of measurement, are for guidance only and are not intended to be used for carpet sizes, appliance space or items of furniture. Apartment areas are provided as gross internal areas and may vary. Bathroom and kitchen layouts are indicative only and are subject to change. Wardrobe size and position may vary. Ceiling height may vary within select apartments, please speak to the sales team for more information. All private outdoor space dimensions and areas are approximate and may vary. The information contained within this document does not constitute part of any offer, contract or warranty. Whilst the plans have been prepared with all due care for the convenience of the intending purchaser, the information contained herein is a preliminary guide only.

FLATS 193, 197, 201 & 205
3 BEDROOM

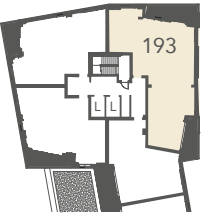
Living/Kitchen/Dining	8.55 x 5.65	28' x 18'5
Bedroom 1	5.50 x 4.15	18' x 13'6
Bedroom 2	4.70 x 3.00	15'4 x 9'8
Bedroom 3	3.45 x 3.15	11'3 x 10'3
Terrace/Balcony	6.46 x 2.25	21'1 x 7'3
Balcony	5.18 x 1.93	16'9 x 6'3

Gross Internal Area: 114.5m²

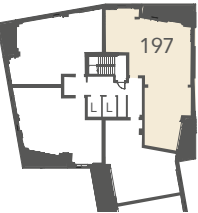


- Measuring points
- SSE - Electrical Meter Board
- HIU - Hydraulic Inerface Units
- W/M - Washing Machine
- F/F - Fridge Freezer
- TO - Tall Oven
- W - Built In Wardrobe
- MVHR - Mechanical Ventilation With Heat Recovery
- Wheelchair adaptable

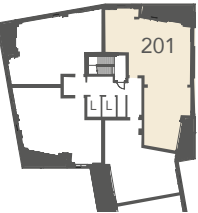
FIRST FLOOR



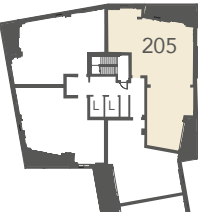
SECOND FLOOR



THIRD FLOOR



FOURTH FLOOR



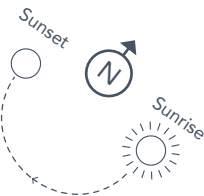
Disclaimer: Apartment layouts provide approximate measurements only. Dimensions, which are taken from the indicated points of measurement, are for guidance only and are not intended to be used for carpet sizes, appliance space or items of furniture. Apartment areas are provided as gross internal areas and may vary. Bathroom and kitchen layouts are indicative only and are subject to change. Wardrobe size and position may vary. Ceiling height may vary within select apartments, please speak to the sales team for more information. All private outdoor space dimensions and areas are approximate and may vary. The information contained within this document does not constitute part of any offer, contract or warranty. Whilst the plans have been prepared with all due care for the convenience of the intending purchaser, the information contained herein is a preliminary guide only.

SOUTH FACING APARTMENTS

FLAT 239
2 BEDROOM

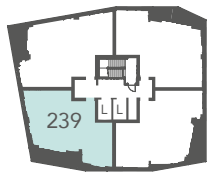
Gross Internal Area: 72.2m²

Living/Kitchen/Dining	6.20 x 4.30	20'3 x 14'1
Bedroom 1	3.75 x 3.75	12'3 x 12'3
Bedroom 2	3.70 x 3.25	12'1 x 10'6
Balcony	5.99 x 1.62	19'6 x 5'3



- Measuring points
- SSE - Electrical Meter Board
- HIU - Hydraulic Interface Units
- W/M - Washing Machine
- F/F - Fridge Freezer
- TO - Tall Oven
- W - Built In Wardrobe
- MVHR - Mechanical Ventilation With Heat Recovery

THIRTEENTH FLOOR

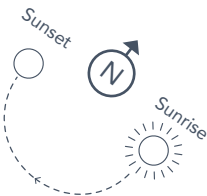


Disclaimer: Apartment layouts provide approximate measurements only. Dimensions, which are taken from the indicated points of measurement, are for guidance only and are not intended to be used for carpet sizes, appliance space or items of furniture. Apartment areas are provided as gross internal areas and may vary. Bathroom and kitchen layouts are indicative only and are subject to change. Wardrobe size and position may vary. Ceiling height may vary within select apartments, please speak to the sales team for more information. All private outdoor space dimensions and areas are approximate and may vary. The information contained within this document does not constitute part of any offer, contract or warranty. Whilst the plans have been prepared with all due care for the convenience of the intending purchaser, the information contained herein is a preliminary guide only.

FLATS 191, 195, 199 & 203
2 BEDROOM

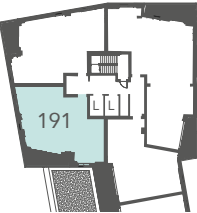
Gross Internal Area: 76.2m²

Living/Kitchen/Dining	6.20 x 4.70	20'3 x 15'4
Bedroom 1	3.75 x 3.65	12'3 x 11'9
Bedroom 2	3.80 x 3.35	12'4 x 10'9
Balcony	5.80 x 2.02	19' x 6'6

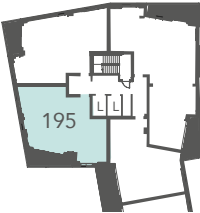


- Measuring points
- SSE - Electrical Meter Board
- HIU - Hydraulic Interface Units
- W/M - Washing Machine
- F/F - Fridge Freezer
- TO - Tall Oven
- W - Built In Wardrobe
- MVHR - Mechanical Ventilation With Heat Recovery

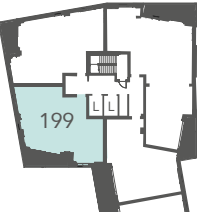
FIRST FLOOR



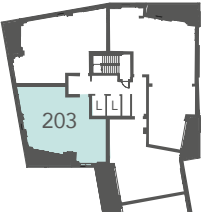
SECOND FLOOR



THIRD FLOOR



FOURTH FLOOR

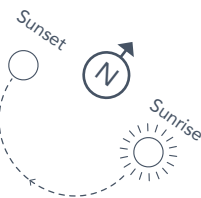


Disclaimer: Apartment layouts provide approximate measurements only. Dimensions, which are taken from the indicated points of measurement, are for guidance only and are not intended to be used for carpet sizes, appliance space or items of furniture. Apartment areas are provided as gross internal areas and may vary. Bathroom and kitchen layouts are indicative only and are subject to change. Wardrobe size and position may vary. Ceiling height may vary within select apartments, please speak to the sales team for more information. All private outdoor space dimensions and areas are approximate and may vary. The information contained within this document does not constitute part of any offer, contract or warranty. Whilst the plans have been prepared with all due care for the convenience of the intending purchaser, the information contained herein is a preliminary guide only.

FLAT 235
2 BEDROOM

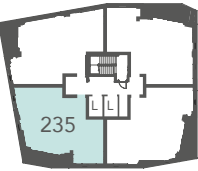
Gross Internal Area: 76.3m²

Living/Kitchen/Dining	6.20 x 4.70	20'3 x 15'4
Bedroom 1	3.75 x 3.75	12'3 x 12'3
Bedroom 2	3.80 x 3.35	12'4 x 10'9
Balcony	5.88 x 1.60	19'2 x 5'2



- Measuring points
- SSE - Electrical Meter Board HIU - Hydraulic Interface Units W/M - Washing Machine F/F - Fridge Freezer TO - Tall Oven
- W - Built In Wardrobe MVHR - Mechanical Ventilation With Heat Recovery

TWELFTH FLOOR

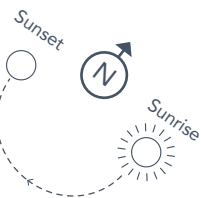


Disclaimer: Apartment layouts provide approximate measurements only. Dimensions, which are taken from the indicated points of measurement, are for guidance only and are not intended to be used for carpet sizes, appliance space or items of furniture. Apartment areas are provided as gross internal areas and may vary. Bathroom and kitchen layouts are indicative only and are subject to change. Wardrobe size and position may vary. Ceiling height may vary within select apartments, please speak to the sales team for more information. All private outdoor space dimensions and areas are approximate and may vary. The information contained within this document does not constitute part of any offer, contract or warranty. Whilst the plans have been prepared with all due care for the convenience of the intending purchaser, the information contained herein is a preliminary guide only.

FLATS 207, 211, 215, 219
& 223
2 BEDROOM

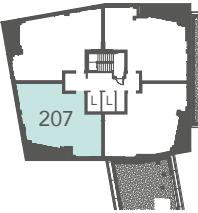
Gross Internal Area: 76.3m²

Living/Kitchen/Dining	6.20 x 4.70	20'3 x 15'4
Bedroom 1	3.75 x 3.60	12'3 x 11'8
Bedroom 2	3.80 x 3.35	12'4 x 10'9
Balcony	5.77 x 2.04	18'9 x 6'6

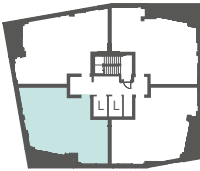


- Measuring points
- SSE - Electrical Meter Board HIU - Hydraulic Interface Units W/M - Washing Machine F/F - Fridge Freezer TO - Tall Oven
- W - Built In Wardrobe MVHR - Mechanical Ventilation With Heat Recovery

FIFTH FLOOR



SIXTH TO NINTH FLOOR
211, 215, 219, 223

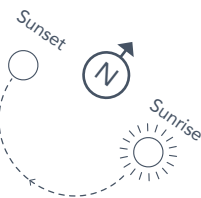


Disclaimer: Apartment layouts provide approximate measurements only. Dimensions, which are taken from the indicated points of measurement, are for guidance only and are not intended to be used for carpet sizes, appliance space or items of furniture. Apartment areas are provided as gross internal areas and may vary. Bathroom and kitchen layouts are indicative only and are subject to change. Wardrobe size and position may vary. Ceiling height may vary within select apartments, please speak to the sales team for more information. All private outdoor space dimensions and areas are approximate and may vary. The information contained within this document does not constitute part of any offer, contract or warranty. Whilst the plans have been prepared with all due care for the convenience of the intending purchaser, the information contained herein is a preliminary guide only.

FLAT 227
2 BEDROOM

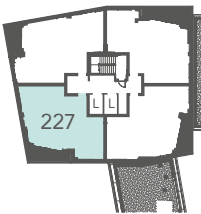
Gross Internal Area: 76.3m²

Living/Kitchen/Dining	6.20 x 4.70	20'3 x 15'4
Bedroom 1	3.75 x 3.60	12'3 x 11'8
Bedroom 2	3.80 x 3.35	12'4 x 10'9
Balcony	5.77 x 2.04	18'9 x 6'6



- Measuring points
- SSE - Electrical Meter Board
- HIU - Hydraulic Interface Units
- W/M - Washing Machine
- F/F - Fridge Freezer
- TO - Tall Oven
- W - Built In Wardrobe
- MVHR - Mechanical Ventilation With Heat Recovery

TENTH FLOOR

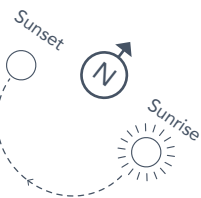


Disclaimer: Apartment layouts provide approximate measurements only. Dimensions, which are taken from the indicated points of measurement, are for guidance only and are not intended to be used for carpet sizes, appliance space or items of furniture. Apartment areas are provided as gross internal areas and may vary. Bathroom and kitchen layouts are indicative only and are subject to change. Wardrobe size and position may vary. Ceiling height may vary within select apartments, please speak to the sales team for more information. All private outdoor space dimensions and areas are approximate and may vary. The information contained within this document does not constitute part of any offer, contract or warranty. Whilst the plans have been prepared with all due care for the convenience of the intending purchaser, the information contained herein is a preliminary guide only.

FLATS 231
2 BEDROOM

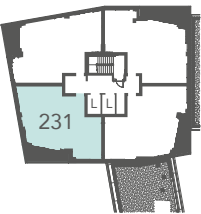
Gross Internal Area: 76.3m²

Living/Kitchen/Dining	6.20 x 4.70	20'3 x 15'4
Bedroom 1	3.75 x 3.60	12'3 x 11'8
Bedroom 2	3.80 x 3.35	12'4 x 10'9
Balcony	5.77 x 2.04	18'9 x 6'6



- Measuring points
- SSE - Electrical Meter Board
- HIU - Hydraulic Interface Units
- W/M - Washing Machine
- F/F - Fridge Freezer
- TO - Tall Oven
- W - Built In Wardrobe
- MVHR - Mechanical Ventilation With Heat Recovery

ELEVENTH FLOOR

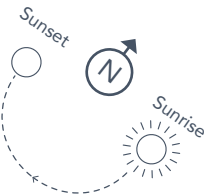


Disclaimer: Apartment layouts provide approximate measurements only. Dimensions, which are taken from the indicated points of measurement, are for guidance only and are not intended to be used for carpet sizes, appliance space or items of furniture. Apartment areas are provided as gross internal areas and may vary. Bathroom and kitchen layouts are indicative only and are subject to change. Wardrobe size and position may vary. Ceiling height may vary within select apartments, please speak to the sales team for more information. All private outdoor space dimensions and areas are approximate and may vary. The information contained within this document does not constitute part of any offer, contract or warranty. Whilst the plans have been prepared with all due care for the convenience of the intending purchaser, the information contained herein is a preliminary guide only.

FLAT 254
2 BEDROOM

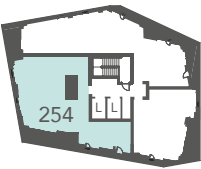
Gross Internal Area: 96.4m²

Living/Kitchen/Dining	7.05 x 4.95	23'1 x 16'2
Bedroom 1	5.80 x 4.20	19' x 13'7
Bedroom 2	4.10 x 3.90	13'4 x 12'7
Balcony	6.42 x 1.70	21' x 5'5



- Measuring points
- SSE - Electrical Meter Board
- HIU - Hydraulic Interface Units
- W/M - Washing Machine
- F/F - Fridge Freezer
- TO - Tall Oven
- W - Built In Wardrobe
- MVHR - Mechanical Ventilation With Heat Recovery

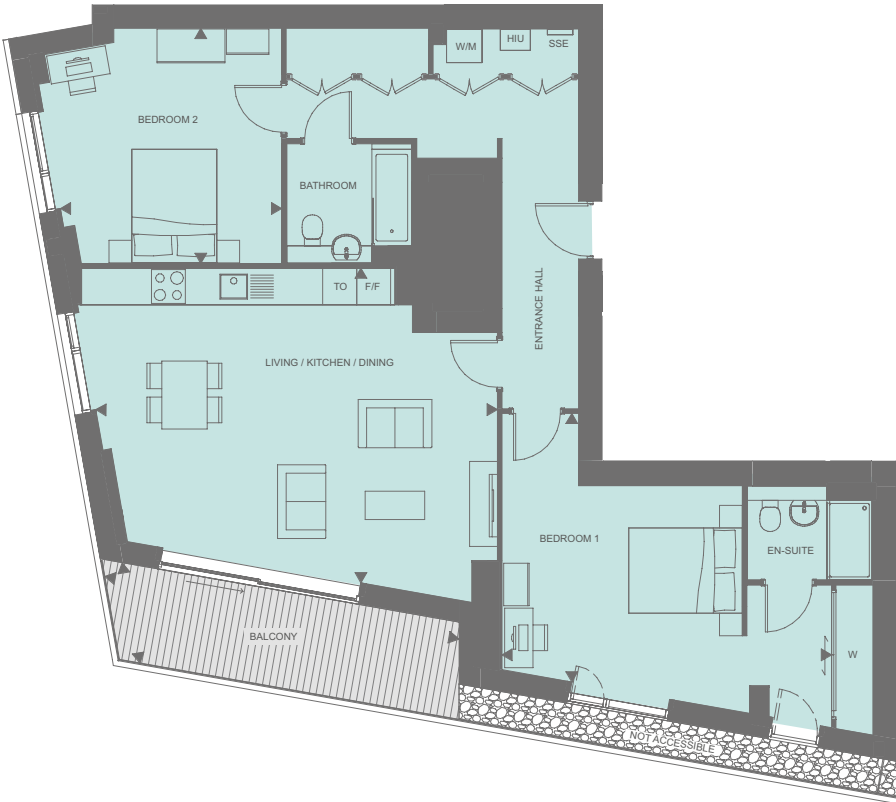
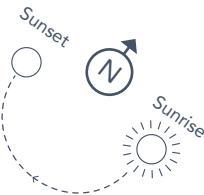
SEVENTEENTH FLOOR



FLAT 251
2 BEDROOM

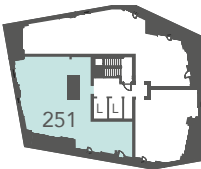
Gross Internal Area: 103.5m²

Living/Kitchen/Dining	7.05 x 5.50	23'1 x 18'
Bedroom 1	5.80 x 4.70	19' x 15'4
Bedroom 2	4.10 x 3.90	13'4 x 12'7
Balcony	6.34 x 1.79	20'8 x 5'8



- Measuring points
- SSE - Electrical Meter Board
- HIU - Hydraulic Interface Units
- W/M - Washing Machine
- F/F - Fridge Freezer
- TO - Tall Oven
- W - Built In Wardrobe
- MVHR - Mechanical Ventilation With Heat Recovery

SIXTEENTH FLOOR



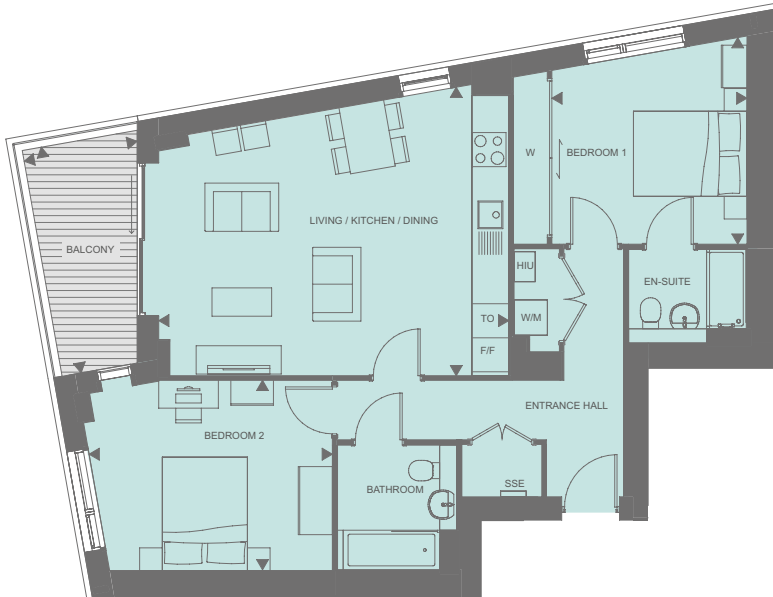
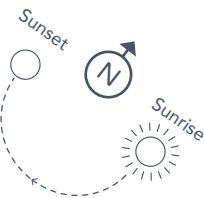
Disclaimer: Apartment layouts provide approximate measurements only. Dimensions, which are taken from the indicated points of measurement, are for guidance only and are not intended to be used for carpet sizes, appliance space or items of furniture. Apartment areas are provided as gross internal areas and may vary. Bathroom and kitchen layouts are indicative only and are subject to change. Wardrobe size and position may vary. Ceiling height may vary within select apartments, please speak to the sales team for more information. All private outdoor space dimensions and areas are approximate and may vary. The information contained within this document does not constitute part of any offer, contract or warranty. Whilst the plans have been prepared with all due care for the convenience of the intending purchaser, the information contained herein is a preliminary guide only.

WEST FACING APARTMENTS

FLATS 192, 196, 200, 204, 208,
212, 216, 220, 224, 228, 232,
236, 240, 244 & 248
2 BEDROOM

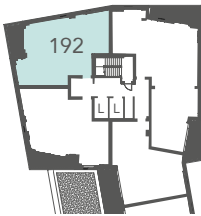
Gross Internal Area: 79.5m²

Living/Kitchen/Dining	6.15 x 5.05	20'1 x 18'0
Bedroom 1	3.60 x 3.40	11'8 x 11'1
Bedroom 2	4.25 x 3.35	13'9 x 10'9
Balcony	4.04 x 2.02	13'2 x 6'6

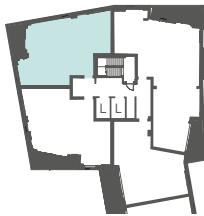


- Measuring points
- SSE - Electrical Meter Board HIU - Hydraulic Interface Units W/M - Washing Machine F/F - Fridge Freezer TO - Tall Oven
- W - Built In Wardrobe MVHR - Mechanical Ventilation With Heat Recovery

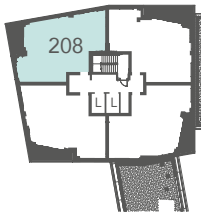
FIRST FLOOR



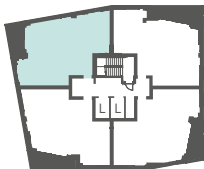
SECOND TO FOURTH FLOOR
196, 200, 204



FIFTH FLOOR



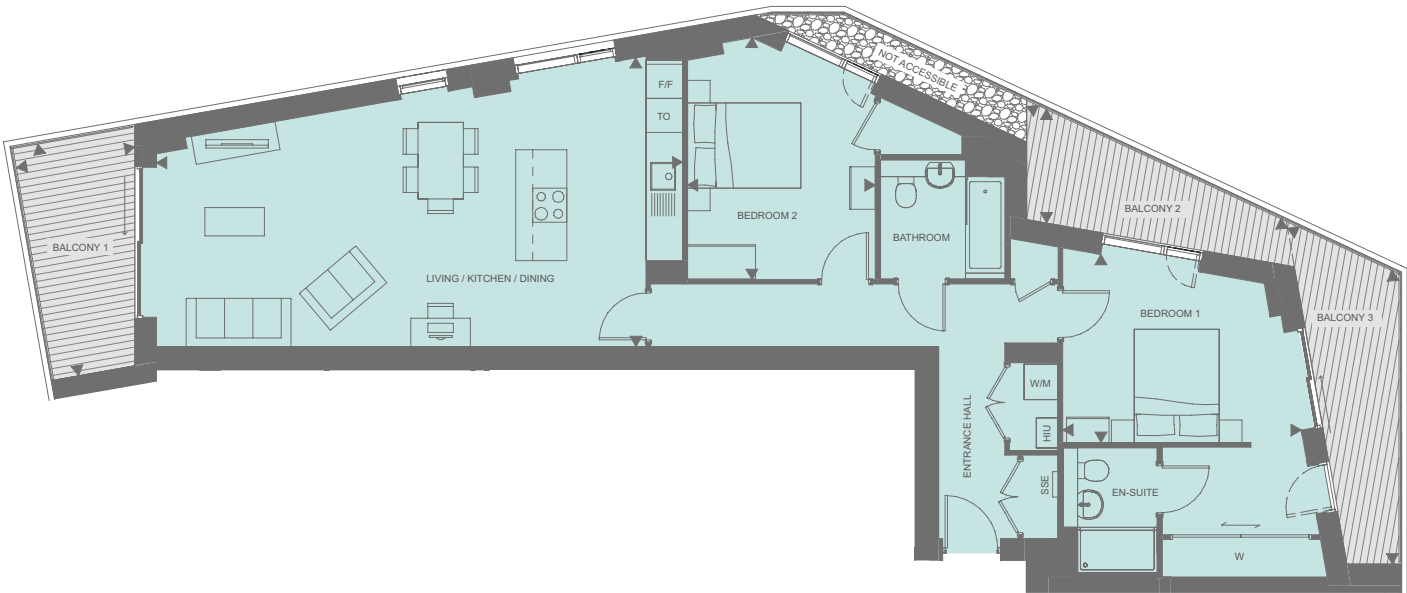
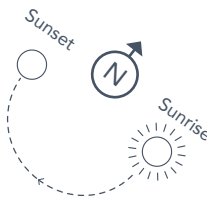
SIXTH TO FIFTHTEENTH FLOOR
212, 216, 220, 224, 228, 232, 236,
240, 244, 248



FLAT 255
2 BEDROOM

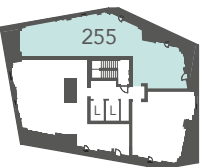
Gross Internal Area: 100.7m²

Living/Kitchen/Dining	9.25 x 5.05	30'3 x 16'5
Bedroom 1	4.20 x 3.30	13'7 x 10'8
Bedroom 2	4.25 x 3.30	13'9 x 10'8
Balcony 1	4.14 x 2.12	13'5 x 6'9
Balcony 2	5.07 x 2.00	16'6 x 6'5
Balcony 3	5.17 x 2.16	16'9 x 7'



- Measuring points
- SSE - Electrical Meter Board HIU - Hydraulic Interface Units W/M - Washing Machine F/F - Fridge Freezer TO - Tall Oven
- W - Built In Wardrobe MVHR - Mechanical Ventilation With Heat Recovery

SEVENTEENTH FLOOR



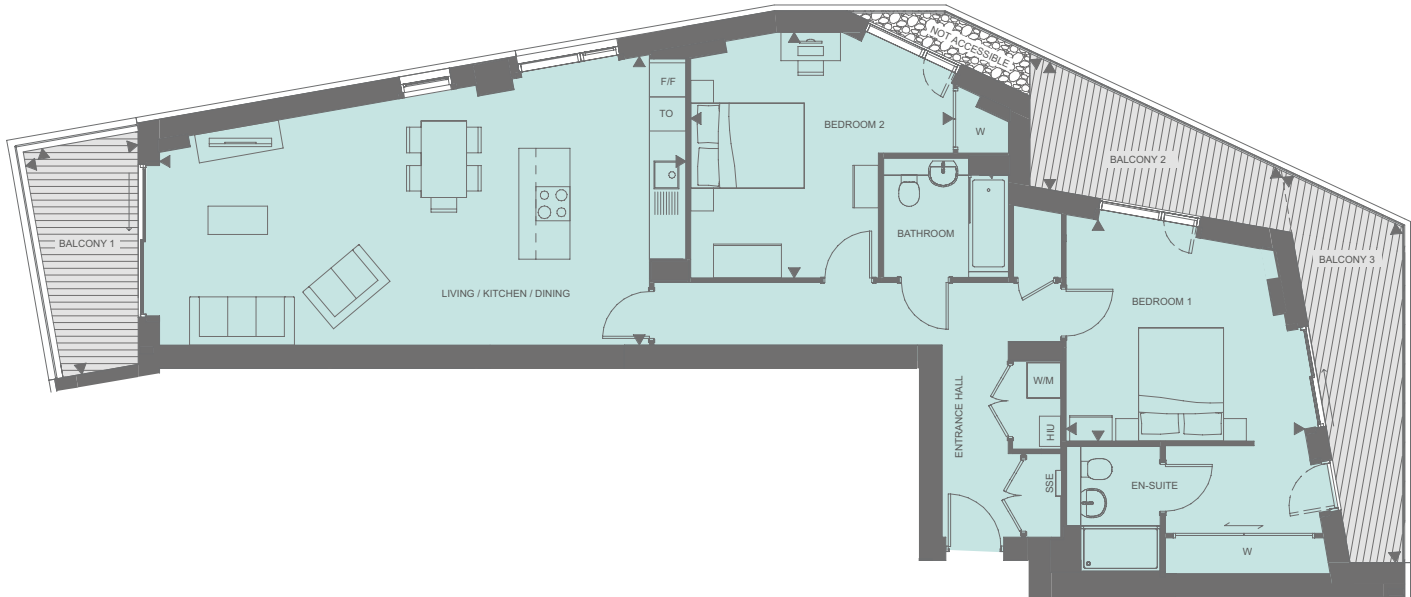
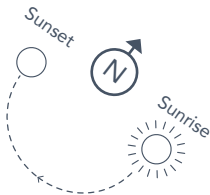
Disclaimer: Apartment layouts provide approximate measurements only. Dimensions, which are taken from the indicated points of measurement, are for guidance only and are not intended to be used for carpet sizes, appliance space or items of furniture. Apartment areas are provided as gross internal areas and may vary. Bathroom and kitchen layouts are indicative only and are subject to change. Wardrobe size and position may vary. Ceiling height may vary within select apartments, please speak to the sales team for more information. All private outdoor space dimensions and areas are approximate and may vary. The information contained within this document does not constitute part of any offer, contract or warranty. Whilst the plans have been prepared with all due care for the convenience of the intending purchaser, the information contained herein is a preliminary guide only.

Disclaimer: Apartment layouts provide approximate measurements only. Dimensions, which are taken from the indicated points of measurement, are for guidance only and are not intended to be used for carpet sizes, appliance space or items of furniture. Apartment areas are provided as gross internal areas and may vary. Bathroom and kitchen layouts are indicative only and are subject to change. Wardrobe size and position may vary. Ceiling height may vary within select apartments, please speak to the sales team for more information. All private outdoor space dimensions and areas are approximate and may vary. The information contained within this document does not constitute part of any offer, contract or warranty. Whilst the plans have been prepared with all due care for the convenience of the intending purchaser, the information contained herein is a preliminary guide only.

FLAT 252
2 BEDROOM

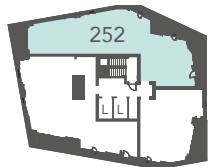
Gross Internal Area: 106.2m²

Living/Kitchen/Dining	9.25 x 5.05	30'3 x 16'5
Bedroom 1	4.20 x 3.85	13'7 x 12'6
Bedroom 2	4.60 x 4.30	15' x 14'1
Balcony	4.04 x 2.01	13'2 x 6'5
Balcony 2	4.90 x 2.24	16' x 7'3
Balcony 3	5.97 x 2.33	19'5 x 7'6



- Measuring points SSE - Electrical Meter Board HIU - Hydraulic Interface Units W/M - Washing Machine F/F - Fridge Freezer TO - Tall Oven
- W - Built In Wardrobe MVHR - Mechanical Ventilation With Heat Recovery

SIXTEENTH FLOOR



Disclaimer: Apartment layouts provide approximate measurements only. Dimensions, which are taken from the indicated points of measurement, are for guidance only and are not intended to be used for carpet sizes, appliance space or items of furniture. Apartment areas are provided as gross internal areas and may vary. Bathroom and kitchen layouts are indicative only and are subject to change. Wardrobe size and position may vary. Ceiling height may vary within select apartments, please speak to the sales team for more information. All private outdoor space dimensions and areas are approximate and may vary. The information contained within this document does not constitute part of any offer, contract or warranty. Whilst the plans have been prepared with all due care for the convenience of the intending purchaser, the information contained herein is a preliminary guide only.



Fifteenth floor – east facing.



Fifteenth floor – south facing.

A UNIQUE COLLABORATION



Peabody has over 150 years of history, experience and expertise. With over 55,000 homes, we are one of the largest housing providers in London and the south-east. We deliver services to 111,000 residents, 8,000 care and support customers, and the wider communities in which we work.

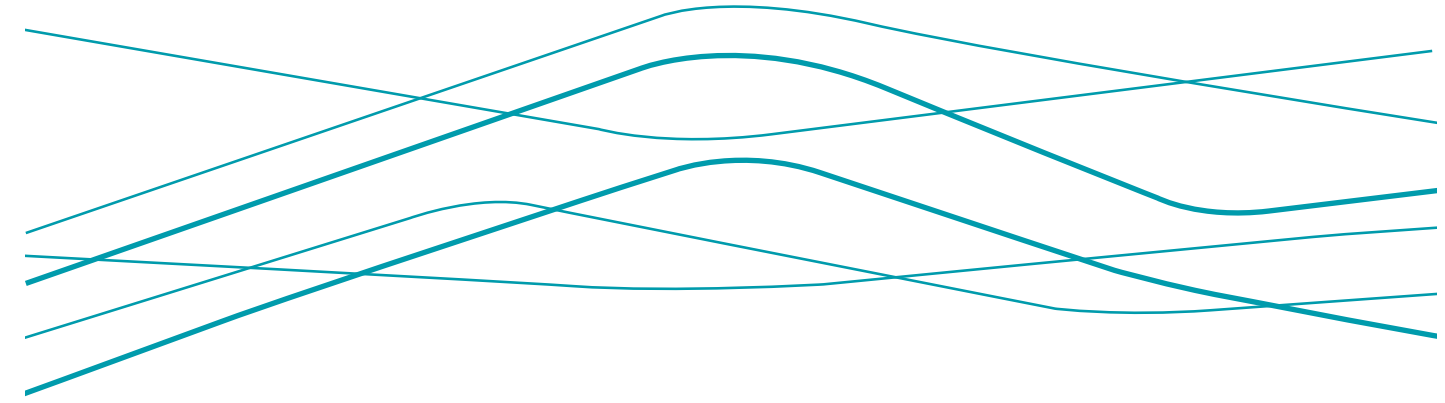
We focus on those who need our help the most, working with people and communities to build resilience and promote wellbeing. We create and invest in great places where people want to live.

Our ambitious housebuilding programme will deliver at least 2,500 homes every year.



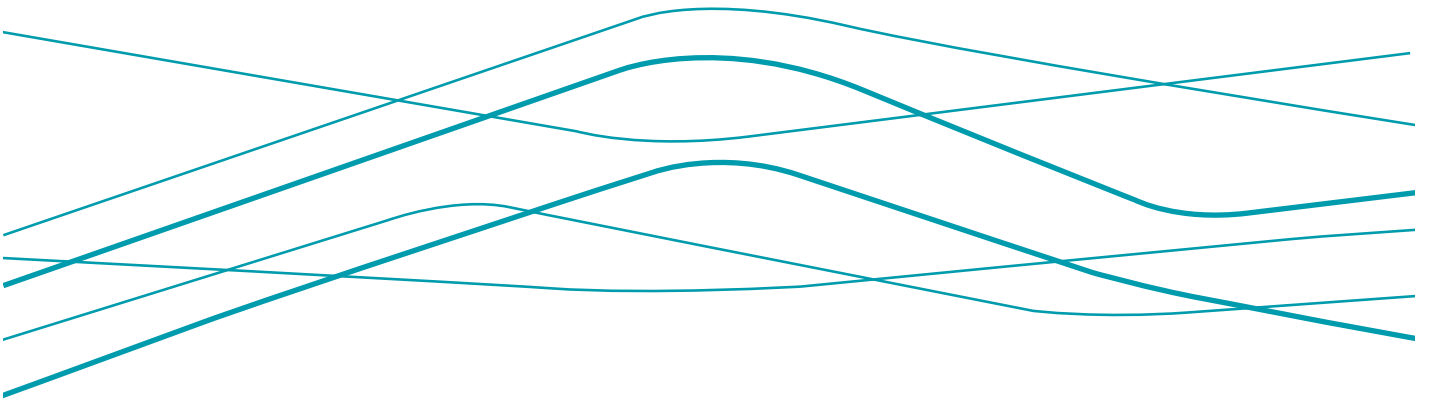
Hill specialise in developing distinctive new homes across London and the South East.

We bring together award-winning contemporary design, sustainable materials and a sympathetic approach to create stunning, individual new properties and communities. We invest significant time and effort from the outset to ensure that all our properties achieve the perfect balance between innovation and practicality. As all construction work is carried out by ourselves, we are also able to guarantee the highest quality of finish within our homes.



peabodysales.co.uk/motion | 020 7021 4842

Every care has been taken in the preparation of this brochure. The details contained herein are for guidance only and should not be relied upon as exactly describing any of the particular material illustrated or written by any order under the Consumer Protection from Unfair Trading Regulations 2008. This information does not constitute a contract, part of a contract or warranty. The developer operates a programme of continuous product development. Features, internal and external, may vary from time to time and may differ from those shown in the brochure. Computer generated images and photography used within this brochure are indicative only. Motion is a marketing name and may not form part of the postal address for these properties. Information correct at time of print, February 2020.



A unique collaboration between

