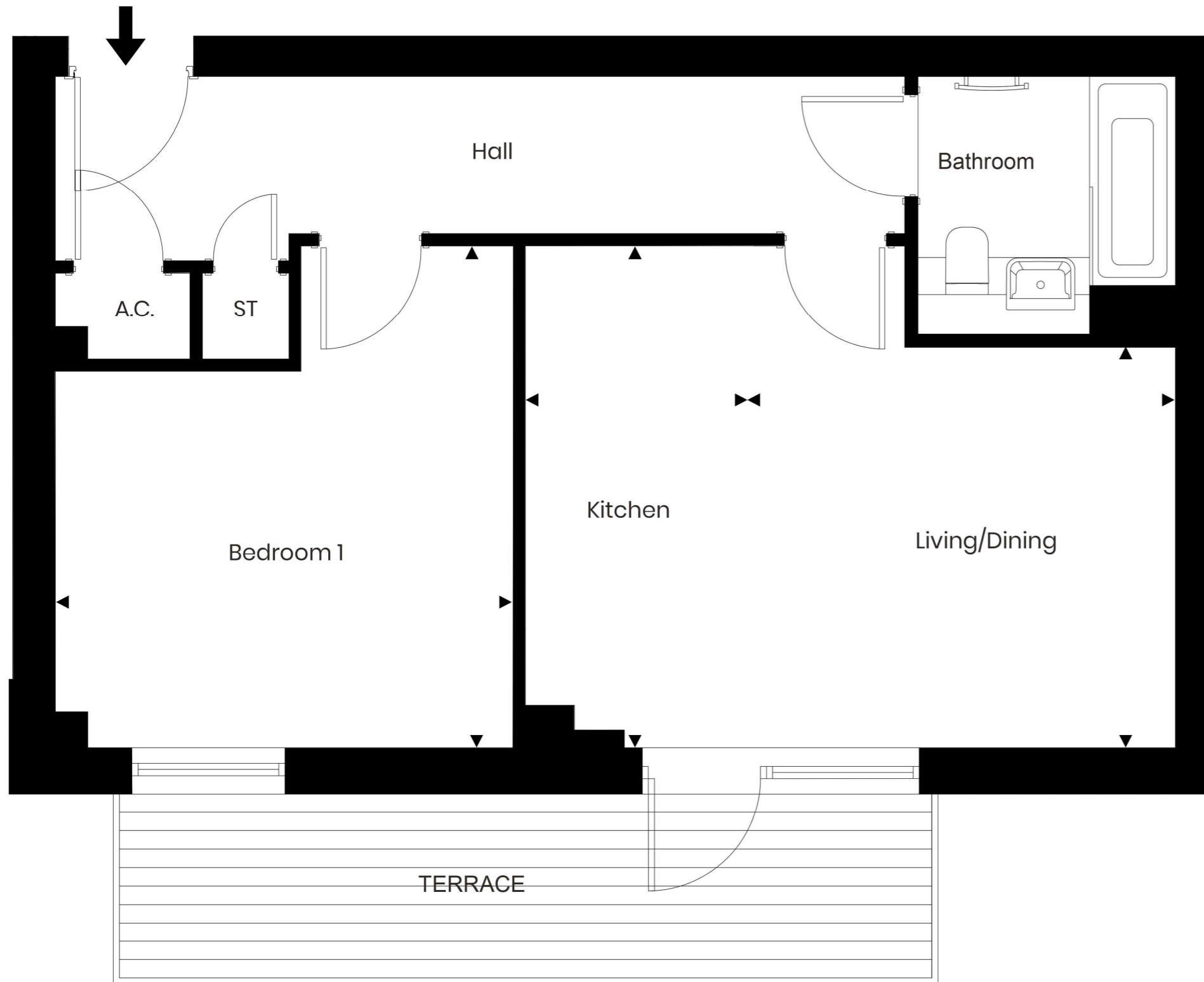


HERING ROAD – AURA, TRUMPINGTON

1 Bedroom Ground Floor Apartment

PLOT 2



DIMENSIONS

Kitchen	1.83m x 4.09m	6'0" x 13'5"
Living/Dining	3.49m x 3.26m	11'5" x 10'8"
Bedroom 1	3.74m x 3.07m	12'3" x 10'1"

Disclaimer: Room dimensions if shown are subject to change and are for guidance only. Whilst we endeavour to make our property details accurate and reliable these particulars are set out as a general outline only for the guidance of intended purchasers or lessees and do not constitute as a full or part offer or contract. Other details are given without responsibility and intending purchasers or tenants should not rely on them as statements or representations of fact but must satisfy themselves by inspection or otherwise as to the correctness of them. The purchaser is advised to obtain verification from their Solicitor or Surveyor to their own satisfaction.

