

# The Robin

3 bedroom house

**Himley Meadows.**  
Bridgnorth Road, Wombourne,  
WV5 0LU



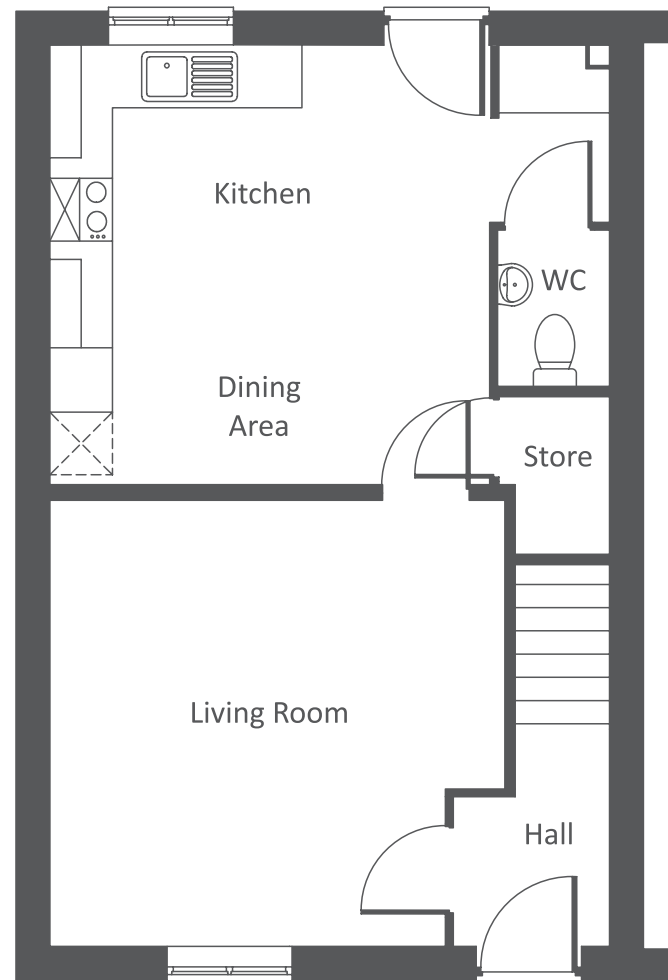
**Bromford.**

Computer generated artists impression only. The image shown is for illustrative purposes only. Brick and tile colour, window and door styles, elevational treatments and external landscaping may vary. Please consult our sales team.

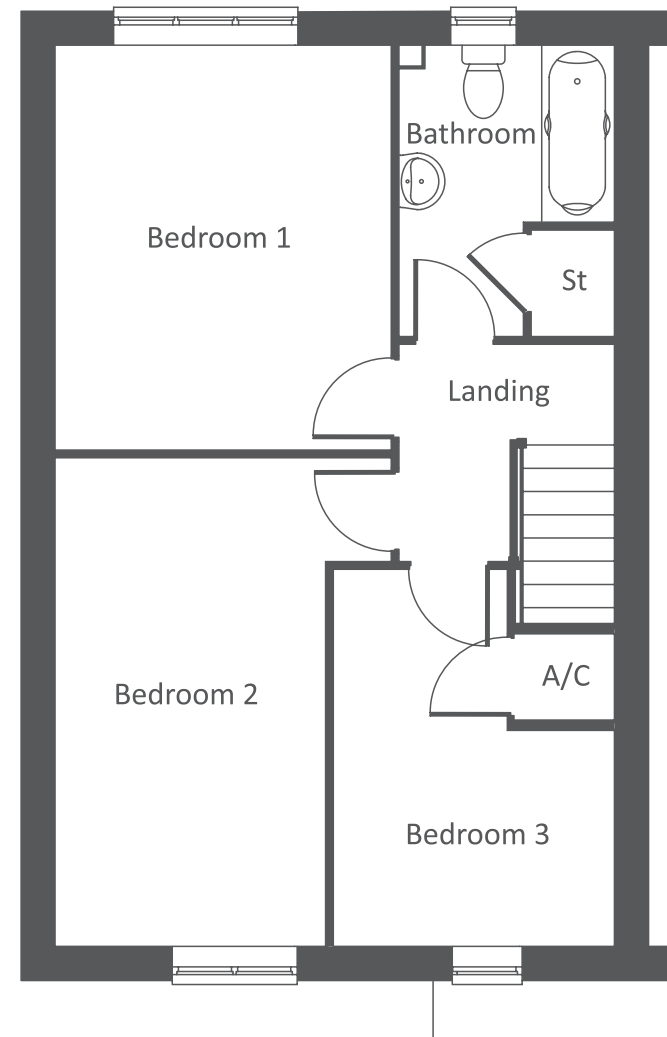


# The Robin

3 bedroom house



Ground Floor



First Floor

- Fitted kitchen/dining with built-in oven, hob and extractor hood
- Downstairs cloakroom
- Useful under-stairs storage
- Well appointed family bathroom
- Full gas fired central heating
- Double glazing and high performance insulation throughout
- Allocated parking spaces
- Turfed rear gardens
- 10 year New Home warranty

## Ground Floor

	M	FT
Kitchen/Dining	4.22m x 4.22m	13'10" x 13'10"
Living Room	4.28m x 4.37m	14'1" x 14'4"
WC	1.70m x 1.07m	5'7" x 3'6"

## First Floor

	M	FT
Bedroom 1	3.88m x 3.22m	12'9" x 10'7"
Bedroom 2	4.69m x 2.59m	15'5" x 8'6"
Bedroom 3	3.62m x 2.70m	11'11" x 8'10"

**Bromford.**

[www.bromford.co.uk/buyahome](http://www.bromford.co.uk/buyahome)  
 sales@bromford.co.uk  
 T 0800 0852 499