



# Rhodes Court

HOUNSLOW | TW3

A collection of  
one & two-bedroom apartments



Your home, your story





# A place to call home

As we journey through life, it's good to know we're coming home to a cosy bed, a hot cup of tea, or friends and family: all with the simple turn of a key.

All good stories need a great location and Rhodes Court is no exception. Just a short hop from the centre of Hounslow town – a vibrant and bustling London suburb and the largest town centre in the borough, Rhodes Court is a great location for your first or forever home.

With a balcony or patio and spectacular roof terrace, it's a place to enjoy and take pride in: to renew and recharge.

And a home of your own at Rhodes Court could be more affordable than you think: these eight new homes are available to buy through Shared Ownership.

There's no place like it.

## It's good to be home.





**"Really amazing place  
to go for a walk or  
running, nice natural  
views, recommended  
to visit with or  
without families."**

**GOOGLE REVIEW  
LAMPTON PARK**



# A place to discover



Around 11 miles from central London, Hounslow is perfectly placed for commuting, with three train stations all within a 10-15 minute walk away; Hounslow Central, Hounslow East on the Piccadilly underground line and Hounslow Mainline to Waterloo station.

Feltham, Kew, Twickenham and Richmond are all within easy reach, whilst Hounslow Heath nature reserve is less than a mile away along Staines Road, with a large network of paths and access to the River Crane.

It's just as easy to get out of London by road, with good links to the M25. If you're travelling by air, Heathrow Airport is a 15-minute drive or around 10 minutes by Tube.

Whether you're shopping, eating out or going to the gym, the heart of Hounslow caters for all your everyday needs.





2  
HOUNSLOW  
WEST

5

LAMPTON  
PARK

5

Lampton

4

1  
HOUNSLOW  
CENTRAL

9

Hounslow  
West

3

Rhodes  
Court

3

8

7

4

STAINES RD

1

Hounslow

2

HOUNSLOW



6 Hounslow Heath

# A place to travel

## SCHOOLS

- ① Grove Road Primary School
- ② Orchard Primary School
- ③ St Michael & St Martin Primary School
- ④ Alexandra Primary School
- ⑤ Wellington Primary School

## KEY

- ① Hounslow Central
- ② Hounslow West
- ③ Gold's Gym
- ④ Treaty Shopping Centre
- ⑤ Lampton Park
- ⑥ Hounslow Heath
- ⑦ The Art Centre
- ⑧ Paul Robeson Theatre
- ⑨ Asda Superstore

## BY TRAIN FROM HOUNSLOW STATION

Richmond: **15 mins**

Clapham Junction:  
**32 mins**

London Waterloo: **40 mins**

London Euston: **55 mins**

## BY TUBE FROM HOUNSLOW CENTRAL

Heathrow: **11 mins**

Hammersmith: **23 mins**

Westminster: **40 mins**

Oxford Circus: **41 mins**

## BY BIKE FROM RHODES COURT

Treaty Shopping Centre:  
**3 mins**

Hounslow Central: **4 mins**

Hounslow Station: **5 mins**

Lampton Park: **7 mins**

Hounslow Heath: **9 mins**

## BY FOOT FROM RHODES COURT

Hounslow Central:  
**10 mins**

Hounslow train station:  
**10 mins**

Hounslow East: **17 mins**

Hounslow West: **18 mins**

\*Travel times taken from TFL Journey planner and Google maps



The site plan is for identification purposes only and is not to scale. Cycle stores could be subject to change

**KEY**

- 1: Rhodes Court - Shared Ownership
- 2: Middlesex Court - Shared Ownership & Rent
- B: Bin Store
- C: Cycle Store
- L: Lift
- M: Meter Room
- P: Plant Room





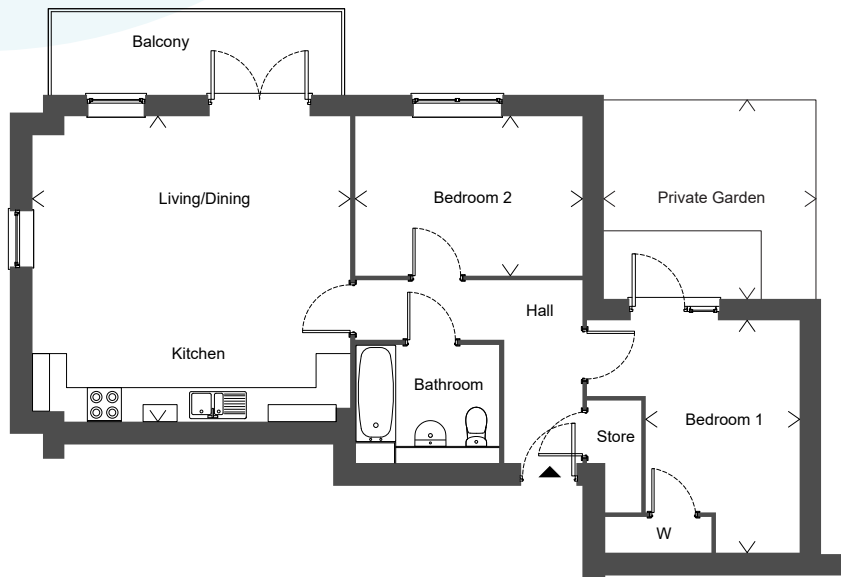
# A place to make plans

With a range of one and two-bedroom apartments available in a variety of layouts, there's something for everyone at Rhodes Court whatever your taste & style.

## PLOT 1 – GROUND FLOOR

### TWO BEDROOM APARTMENT

Plot 1	72.17m <sup>2</sup>
Kitchen / Living / Dining	5.60m x 5.41m
Bedroom 1	4.10m x 2.77m
Bedroom 2	4.00m x 3.03m
Private Garden	3.74m x 3.51m

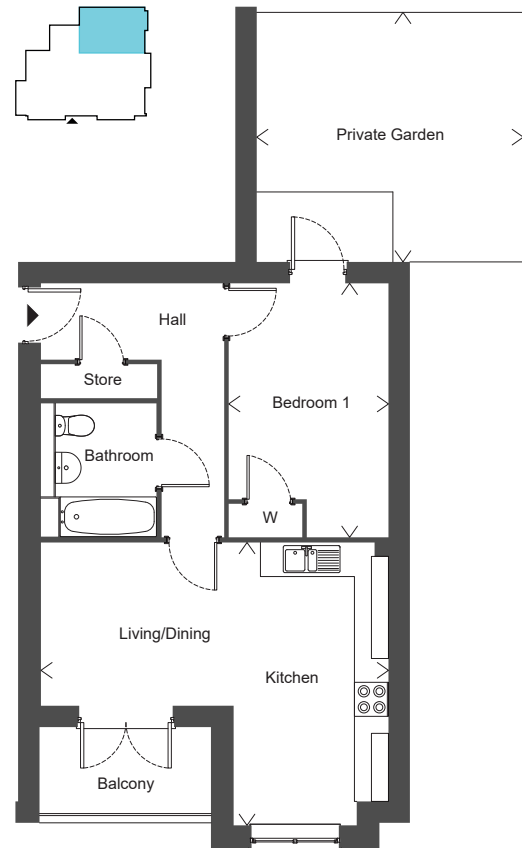


## PLOT 2 – GROUND FLOOR

### ONE BEDROOM APARTMENT

---

Plot 2	52.32m <sup>2</sup>
Kitchen / Living / Dining	6.13m x 4.99m
Bedroom 1	4.48m x 2.82m
Private Garden	4.70m x 4.40m

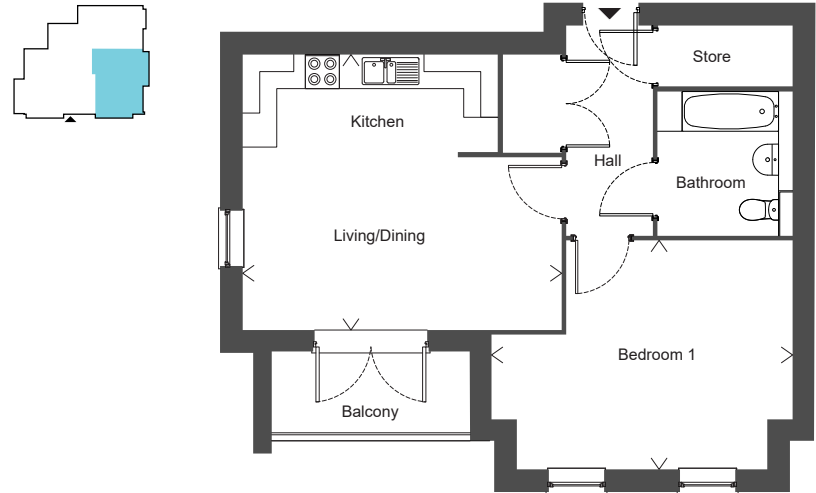




### PLOT 3 – GROUND FLOOR

#### ONE BEDROOM APARTMENT

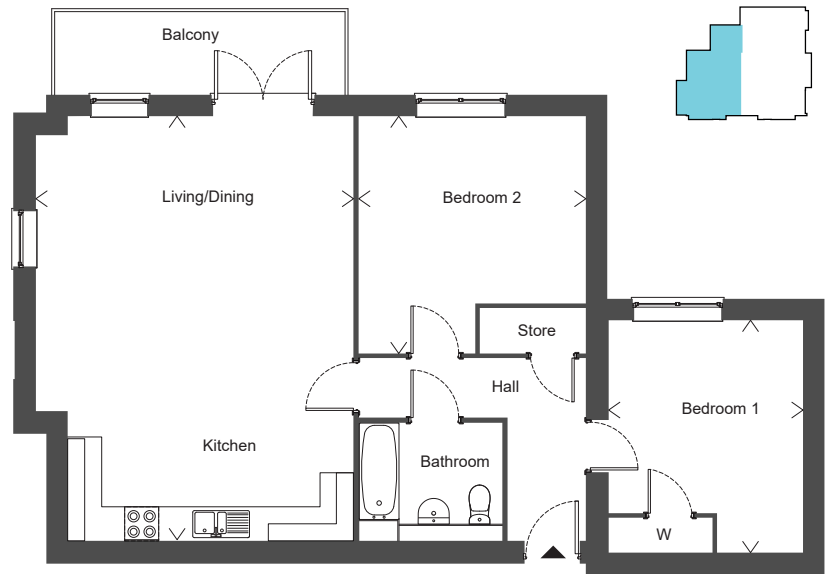
Plot 3	62.26m <sup>2</sup>
Kitchen / Living / Dining	5.62m x 4.86m
Bedroom 1	5.31m x 4.04m



### PLOT 4 – FIRST FLOOR

#### TWO BEDROOM APARTMENT

Plot 4	87.79m <sup>2</sup>
Kitchen / Living / Dining	7.49m x 5.60m
Bedroom 1	4.10m x 3.43m
Bedroom 2	4.18m x 4.01m



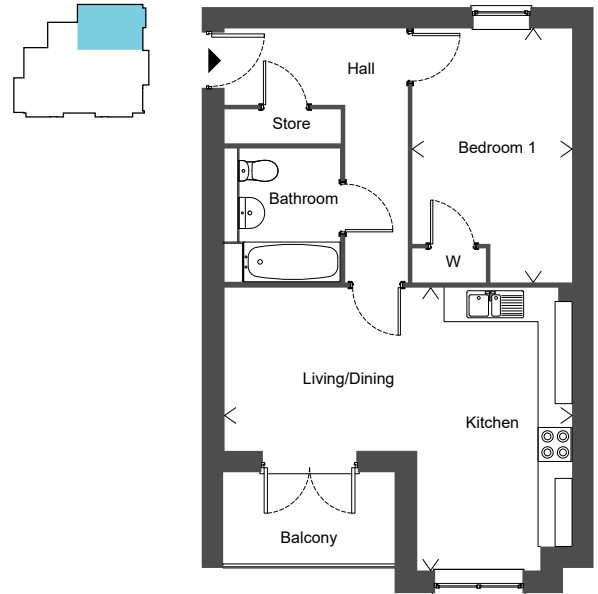
## PLOT 5 – FIRST FLOOR

### ONE BEDROOM APARTMENT

Plot 5 52.33m<sup>2</sup>

Kitchen / Living / Dining 6.13m x 4.99m

Bedroom 1 4.48m x 2.82m



## PLOT 6 – FIRST FLOOR

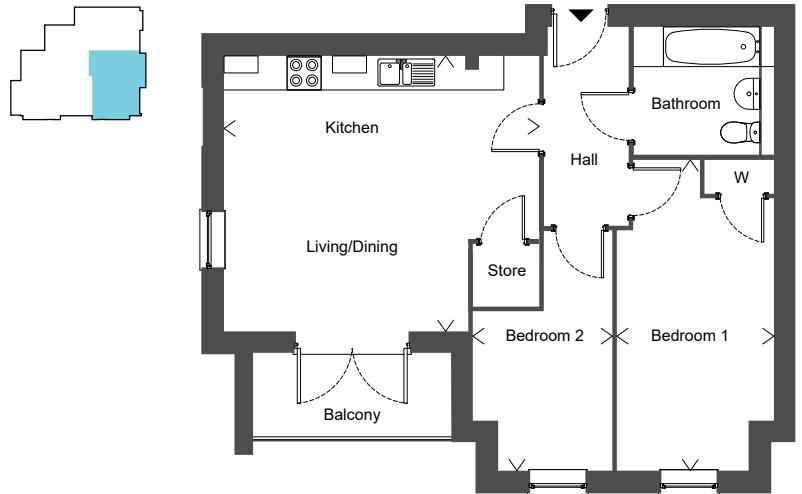
### TWO BEDROOM APARTMENT

Plot 6 62.26m<sup>2</sup>

Kitchen / Living / Dining 5.56m x 4.86m

Bedroom 1 5.48m x 2.68m

Bedroom 2 4.24m x 2.55m

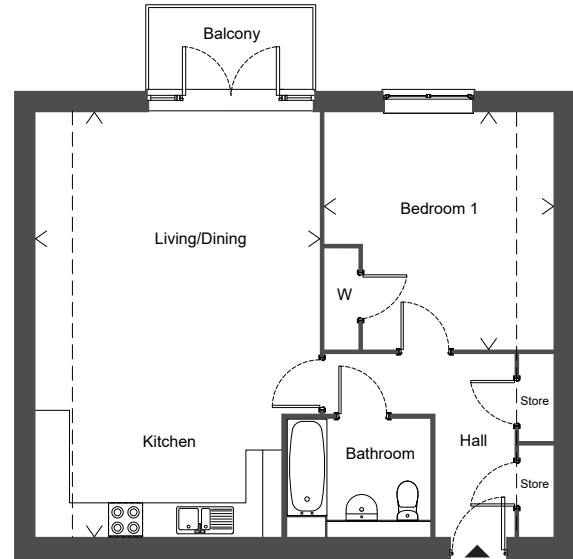




### PLOT 7 – SECOND FLOOR

#### ONE BEDROOM APARTMENT

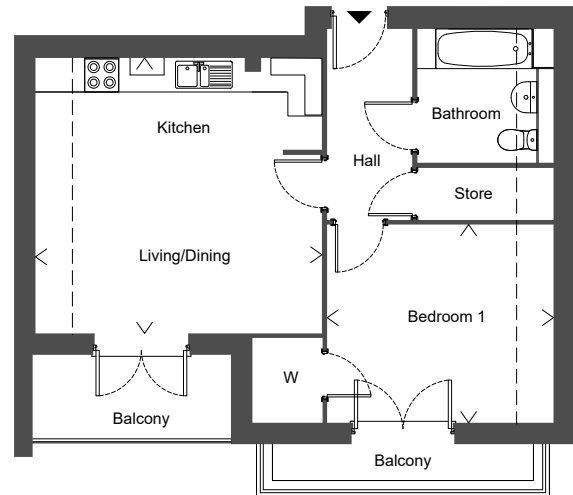
Plot 7	68.39m <sup>2</sup>
Kitchen / Living / Dining	7.49m x 5.01m
Bedroom 1	4.18m x 4.04m



### PLOT 8 – SECOND FLOOR

#### TWO BEDROOM APARTMENT

Plot 8	55.57m <sup>2</sup>
Kitchen / Living / Dining	5.05m x 4.86m
Bedroom 1	3.99m x 3.50m



# A place to take pride in

Whatever your needs, we have a selection of homes to suit.

## KITCHEN

- ▶ Modern kitchen featuring high-gloss handleless units with an upstand matching the worktop
- ▶ Integrated full-height AEG fridge freezer
- ▶ Integrated AEG washer dryer
- ▶ Integrated AEG dishwasher
- ▶ AEG electric oven & ceramic hob with stainless steel Electrolux extractor hood and splashback
- ▶ Karndean flooring

## BATHROOM

- ▶ Modern bathroom suite with Hansgrohe fittings
- ▶ Heated chrome towel rail
- ▶ Thermostatic shower with glass shower screen over bath
- ▶ Ceramic flooring

## GENERAL

- ▶ Balconies
- ▶ Private gardens to the ground floor apartments
- ▶ Communal garden
- ▶ Carpeted living areas and bedrooms
- ▶ Video door entry system





# What is Shared Ownership?



Shared Ownership is a simple, and affordable way to get a home of your own. You buy a share in the home that is affordable to you and pay a rent to us (alongside a monthly service charge) on the rest. The good news is the mortgage and rent combined is usually less than the cost of buying outright or renting a similar home – and it's yours to decorate and live in as you wish. The other advantage of buying a share is that getting a mortgage should be a bit easier- you'll just need the deposit on the share, not the full value, and your mortgage will be smaller than trying to buy outright.

If you want to buy a bigger share in the home later when you can afford to, that's fine – we'll talk you through the easy way to do that, if and when you're ready.

## CAN I AFFORD IT?

One of our Independent Mortgage Advisors will assess your ability to buy and what's the best share for you based on your income and expenditure.

## THE NEXT STEPS

Our friends at Redloft are helping us to sell these homes. Please get in touch with them via the following for more information:

**e:** [rhp@redloft.co.uk](mailto:rhp@redloft.co.uk)

**t:** 0207 539 3745

[www.redloftproperty.co.uk](http://www.redloftproperty.co.uk)

They will talk you through all the details and the latest availability.



[@rhp\\_uk](#) | [www.rhp.org.uk/sales](http://www.rhp.org.uk/sales) | [sales@rhp.org.uk](mailto:sales@rhp.org.uk)

The particulars within this document are for illustrative purposes and should be treated as guidance only. Scale varies between plan types. They cannot be relied upon as accurately describing any of the specified matters prescribed by any Order made under The Consumer Protection from Unfair Trading Regulations 2008. Nor do they constitute a contract, part of a contract, or warranty. A mortgage may be required. Service charges, rent and other costs may apply. Your home is at risk of repossession if you do not keep up repayments on a loan secured against it. Details are correct at time of going to print: August 2019.