



ASHBURY
PARK
HAWLEY

The Minley
3 bedroom house

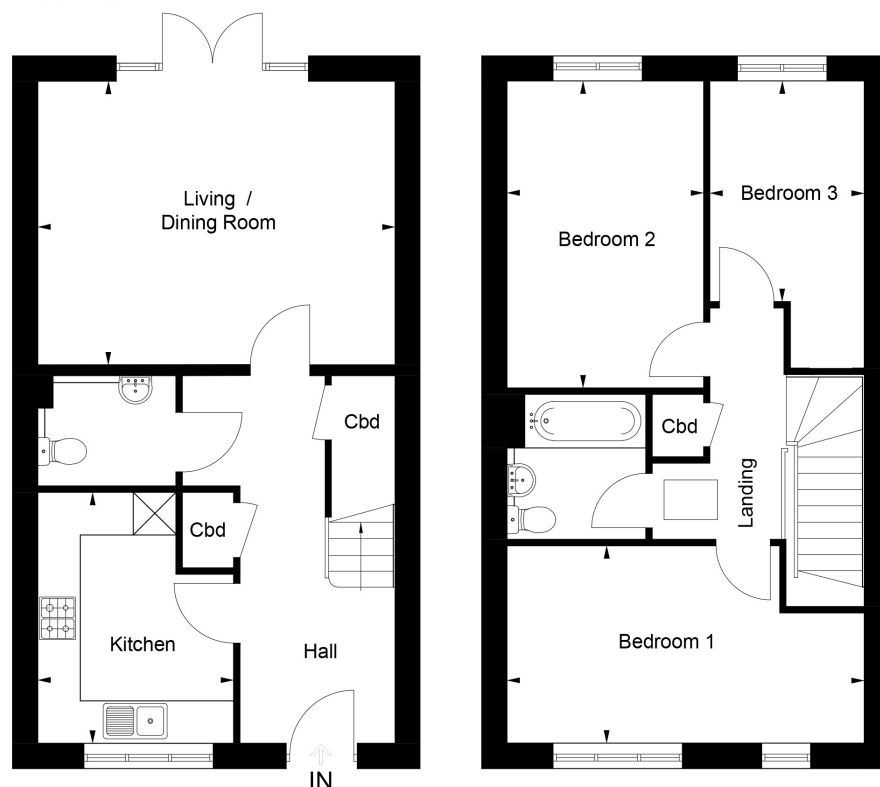


Backed by
HM Government



The Minley

Plots 28, 29



ASHBURY
PARK
HAWLEY

The Minley

3 bedroom house

Kitchen

2.74m x 3.52m 9'0 x 11'7

Living / Dining Room

5.01m x 3.98m 16'5 x 13'1

Bedroom 1

5.01m x 2.77m 16'5 x 9'1

Bedroom 2

2.76m x 4.31m 9'1 x 14'2

Bedroom 3

2.16m x 3.09m 7'1 x 10'2

 Hawley Road, Hawley
GU17 9EF

0800 145 6663

radianhomes.co.uk/ashburypark

Images may be computer generated and are for illustrative purposes only, so may not be representative of exact plots. Images may be of a different model of home. Floor plans are not to scale and are indicative only. Location of windows, doors, kitchen units and appliances may differ. Doors may swing in the opposite direction to that shown on selected houses. Dimensions, which are taken from the indicated points of measurement, are for guidance only and are not intended to be used to calculate space for items of furniture. Total areas are provided as gross internal areas and are subject to variance. Please note, some plots may be handed, speak to a Sales Executive for further information. Abri and Radian Homes are trading names of The Swaythling Housing Society Limited, a Registered Society under the Co-operative and Community Benefit Societies Act 2014 (registration number 10237R) and a registered provider with the Regulator of Social Housing (registration number L0689). Registered office: Collins House, Bishopstoke Road, Eastleigh, Hampshire SO50 6AD. Authorised and regulated by the Financial Conduct Authority. Part of the Abri group of companies. The Swaythling Housing Society Limited provides management services for subsidiaries in the Abri group. Further corporate information is available at www.abri.co.uk. Correct at time of creation – January 2021.

