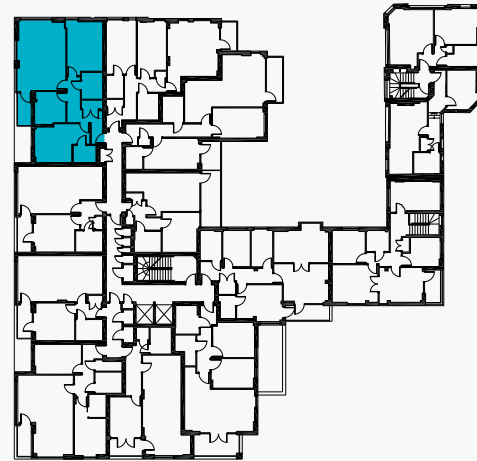
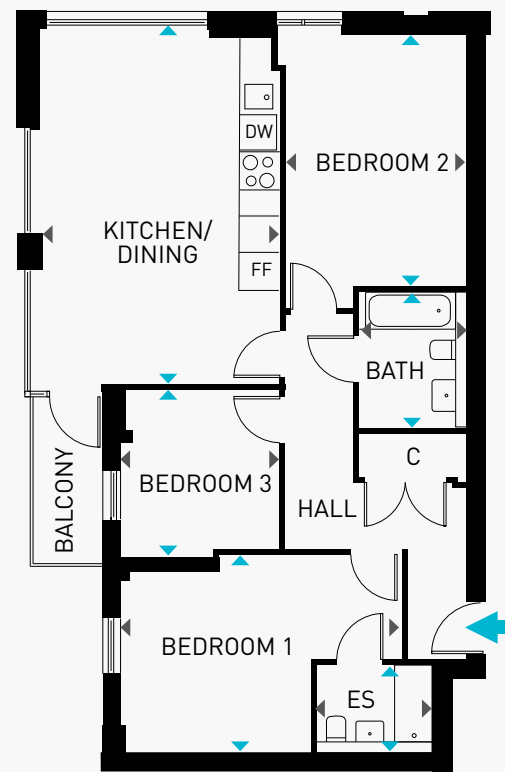


Three bedroom apartment (Type 3.1)

Apartments 10, 21, 32, 42 – 92.6m² / 996sqft
Kingsway Hove, Brighton BN3 2PU

FIRST FLOOR: PLOT 10 SECOND FLOOR: PLOT 21 THIRD FLOOR: PLOT 32 FOURTH FLOOR: PLOT 42



ES = En-Suite
C = Cupboard
DW = Dishwasher
FF = Fridge/Freezer
▲ = Main Entrance

	A	B		A	B
Kitchen/Dining	6.55m [21'5"]	x 4.32m [14'2"]	Bedroom 3	3.05m [10'0"]	x 2.90m [9'6"]
Bedroom 1	5.14m [16'10"]	x 3.60m [11'9"]	Bath	2.50m [8'2"]	x 1.96m [6'5"]
Bedroom 2	4.59m [15'0"]	x 3.31m [10'10"]	En-Suite	2.14m [7'0"]	x 1.59m [5'2"]

The kitchen and dimensions on the following floorplans are for guidance only. Dimensions are rounded down to one decimal point and are taken from the points indicated and are not intended to be used for carpet sizes, appliance space or items of furniture. The sq m and sq ft are measured as gross internal areas using the RICS code to measuring. Apartment layouts shown here are for approximate measurements only. All measurements and areas may vary within a tolerance of 5%. Wardrobe layouts and locations are indicative only. Balconies may vary in size. Window arrangements may vary from floor to floor. Please speak to your Sales Executive for details.

