



Wapping Wharf

1 & 2 bed shared ownership apartments

- 03 Introduction
- 04 Local area
- 06 The development
- 08 Interiors
- 10 Specifiction
- 12 Connectivity
- 13 Site plan
- 14 About us



A place you'll love to live

Bristol's independent spirit is cemented into the city's character. There's something for everyone to enjoy with centuries-old heritage, a cosmopolitan city centre, cultural events to experience right on your doorstep and the beautiful surrounding countryside.

Situated on the city's thriving waterfront, Wapping Wharf is established as one of Bristol's most exciting neighbourhoods to live, shop, work and relax in. Just moments away from Gaol Ferry Steps and the harbourside, you'll be located within easy reach of the city centre and an array of local amenities.



1



2



→ PLEASE ORDER AT WINDOW →



4



5



Enjoy fashion and flavours from around the globe

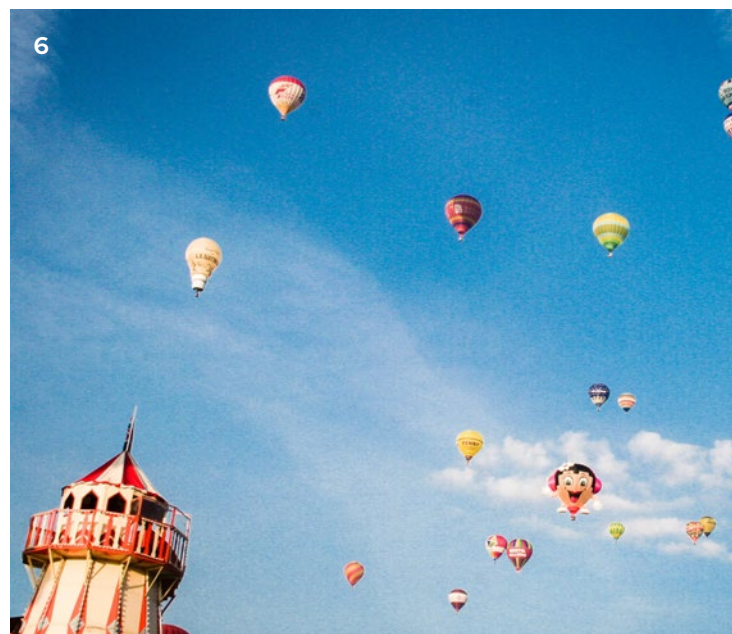
If you're looking for a delicious lunchtime bite, a romantic meal for two or some post-work retail therapy, Bristol has you covered.

Cargo, a collection of converted shipping containers, is a few minutes walk from Wapping Wharf and includes an eclectic mix of eateries and independent retailers. Restaurants on site offer everything from small-plate curries and tapas through to Michelin-starred restaurants.

For high street fashion head to Bristol Shopping Quarter in the city centre, a 19 minute walk away, which includes Zara, Bershka, M&S and Debenhams – plus a top floor filled with family favourite restaurants to take your pick from.

If you're after something more unique – Park Street is crammed full of vintage thrift-style shops and independent boutiques with a great array of styles to peruse. An added bonus, by night Park Street also offers a selection of pubs and stylish speakeasies, plus plenty of nightclubs to dance the night away.

- 1 The Clifton Suspension Bridge
16 mins cycle
- 2 Harbourside
3 mins walk
- 3 St Nicholas Markets
16 mins walk
- 4 Quay St Diner
14 mins walk
- 5 Cargo
2 mins walk
- 6 Bristol Balloon Fiesta
16 mins cycle



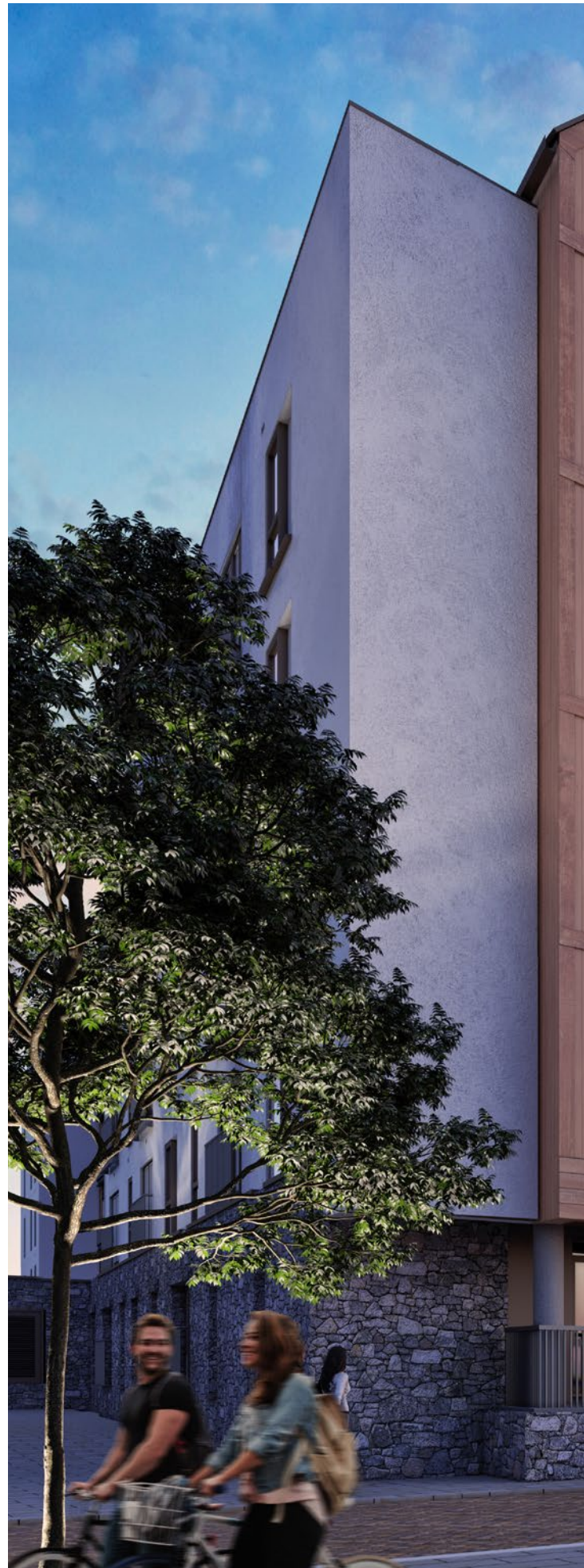
Travel times taken from Google maps and are approximate.

A flourishing neighbourhood

Your new waterfront home offers easy access to the city centre and boasts scenic views of the River Avon and local harbour.

Designed to be in keeping with the historic dockside location, the apartments at Wapping Wharf have characterful timber exteriors and with some enjoying balconies that overlook the surrounding tree-lined walkways and idyllic waterfront.

With a brand new phase of 44 stunning one and two bedroom homes available through shared ownership, there couldn't be a better time to call this vibrant new neighbourhood your home.



CGI is for illustrative purposes only.



A sleek and stylish home



CGIs for illustrative purposes only and show an example house type with a variation of the shared ownership specification.





Thoughtfully designed for you

Living

- Vertical blinds
- Karndean flooring

Kitchen

- Lanzet wall and base units
- Lanzet easy glide drawers and soft closers to doors
- Stainless steel inset one and a half bowl sink and drainer
- Built in single oven, induction hob and cooker hood
- Integrated dishwasher and fridge freezer
- Washing machine included
- Ceiling downlighters
- Karndean flooring

Bedroom

- Fitted wardrobes with flush pulled handles
- Fitted carpets

Bathroom

- Vitra wash hand basin
- Vitra bath with shower and glass shower screen
- Porcelanosa wall and floor tiling
- Ladder style heated towel rail
- Ceiling downlighters

En-suite (if applicable)

- Vitra wash hand basin
- Hans Grohe shower, cubicle and Porcelanosa shower tray
- Porcelanosa wall and floor tiling
- Ladder style heated towel rail
- Ceiling downlighters



Internal finishes

- Smooth finished walls
- Smooth finished ceilings, skirtings and architraves in white
- Chrome style door furniture
- Fitted carpets to bedrooms
- Flooring to kitchen, bathroom and hallway

General

- Double glazed
- 10 Year Premier building guarantee

It's all right here on your doorstep



From Wapping Wharf your daily travel couldn't be easier. Whether it's popping to the supermarket for the weekly shop, or an impromptu jog around the harbour it's all possible from your new base.

As a city built upon green credentials, Bristol is made for travelling by foot, cycling or public transport. The city centre is just a short walk away, or even quicker if you choose to use the new cycle path that passes right through the development.

There are regular and reliable buses that run throughout the city and Bristol Temple Meads train station, a 21 minute walk away, connects you to major cities including Birmingham, Leeds and Manchester which can also take you to London Paddington in 1 hour 20 minutes.

Finally, if you're looking for a more novel way to travel hop aboard one of Bristol Ferry Boats' daily services from your nearest ferry stop. By water you can take in city landmarks including the SS Great Britain and reach Bristol Temple Meads in a cool 16 minutes.



from Wapping Wharf



Arnolfini Art Gallery – 6 mins

Asda Superstore – 7 mins

Park Street – 13 mins

Temple Meads Station – 21 mins

Cabot Circus – 23 mins



from Wapping Wharf



Park Street – 5 mins

Tobacco Factory – 6 mins

Temple Meads Station – 7 mins

Ashton Gate – 7 mins

Cabot Circus – 8 mins



from Wapping Wharf



Clifton Village – 10 mins

M32 – 10 mins

Ashton Court – 11 mins

M4 – 16 mins

Bristol Airport – 19 mins



from Bristol Temple Meads Station



Bath Spa – 12 mins

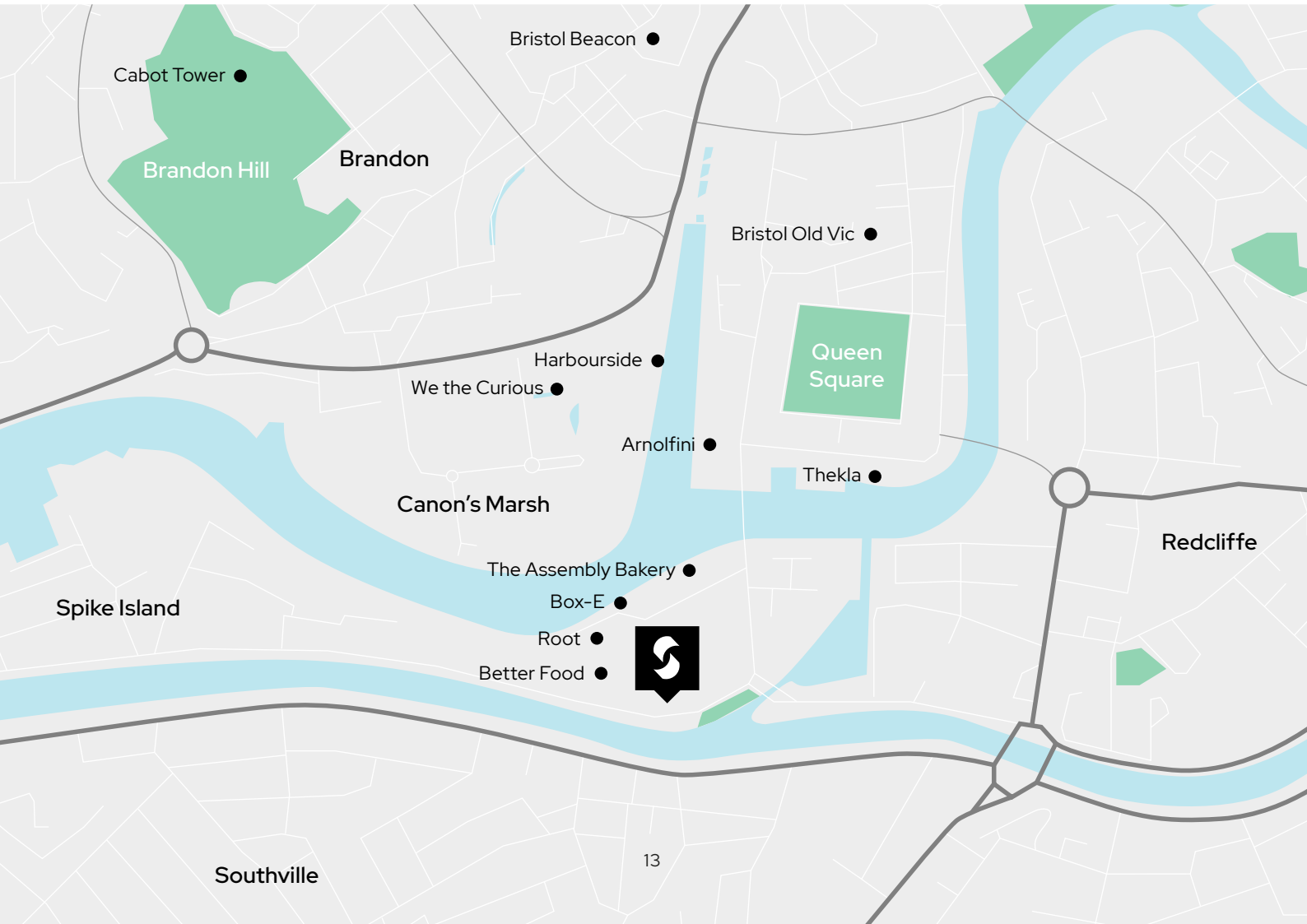
Cardiff Central – 48 mins

Exeter – 60 mins

Reading – 68 mins

London Paddington – 80 mins

Travel times taken from Google maps and nationalrail.com are approximate.



20 years of developing home ownership solutions



Whether you're a first-time homeowner, growing family, or simply looking to downsize – we're your perfect property partner.

Why Shared Ownership?

We partner with you to share the cost of buying your own home – you pay for the part you can afford and we'll pay for the part that's left.

Here's the best part

As you are only buying part of your home, you will have a smaller deposit (as little as 5%) and lower monthly payments – perfect.

The part you pay

Start by paying what you can afford. When you want to buy a bigger part, you can. We call it 'staircasing' and we're with you every step of the way.

All part of the service

From moving in to moving on, our sales, marketing and home ownership teams are here to help you with every part of owning your home.



As one of the UK's leading shared ownership providers, Sovereign is passionate about giving everyone the opportunity to own their own home.

Our highly dedicated sales team has already helped thousands of people step onto the property ladder and our profit with a purpose principle means we can continue to help thousands more. Established, experienced, and affordable, we are proud to help more people live where they love.

Get in touch

0300 330 0718

To find out more about shared ownership and the homes we offer, get in touch today.

→ sovereignliving.org.uk

Head office

Sovereign House
Basing View
Basingstoke
RG21 4FA