

The Shared Ownership Collection
by One Housing Group



One and two bedroom apartments

Welcome to Boyn Heights

Boyn Heights is a brand-new development, offering a large collection of one and two bedroom apartments for sale via the Shared Ownership scheme in Maidenhead, Berkshire. All the properties benefit from open plan living with a contemporary interior throughout. Kitchens come inclusive of integrated washer dryers, fridge freezers and ovens. Each apartment also benefits from an allocated car parking space and cycle storage.

The development is located in the heart of the market town of Maidenhead, Berkshire. Maidenhead town centre is approximately 0.9 miles from the site and is home to incredible shopping facilities such as Nicholsons Shopping Centre and supermarkets Waitrose and Sainsburys. The River Thames is just a short walk from the town centre and offers amazing views and walks towards the villages of Cookham, Marlow, Windsor and Eton. The largest in the Royal Borough of Windsor and Maidenhead, the town boasts excellent leisure facilities including an Odeon cinema, a thriving arts centre at Norden Farm, Magnet Leisure Centre and tenpin bowling. Maidenhead train station is around a 15 minute walk away and connects you to London Paddington and Reading.

Maidenhead Retail Park is right on your doorstep and has everything you need from the latest fashion trends to everyday items can be found here The Nicholson Shopping Centre dominates the town, with over 60 stores, from fashion to phones.



Boyn Heights
Maidenhead

High specification for a high expectation

Kitchen/Living/Dining

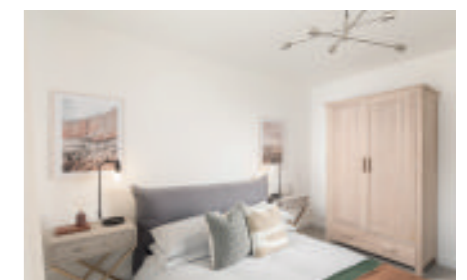
- Kitchen handleless cupboards in white
- Natural Messina slim line laminate worktop and splashback
- 1.0 stainless steel bowl sink with chrome mixer
- Bosch induction hob
- Smeg chimney extractor hood
- Beko 50/50 Integrated fridge freezer
- Zanussi washer/dryer
- Amitco flooring in dusky walnut
- White plates and sockets to kitchen
- Strip lighting fitted to rear of wall units

Bedroom(s)

- 100% Polypropylene taupe carpet to all bedrooms

Bathroom/Ensuite

- Dark Brown vinyl flooring
- White ceramic tiles to bath/shower enclosure walls/half height to WC and washbasin
- White semi pedestal basin with mixer taps
- Steel enamelled bath with single lever mixer tap in chrome
- White back to wall WC pan with concealed cistern and polished chrome dual flush push button
- Wall-mounted polished chrome shower head and rail with thermostatic control and glass shower screen
- White shower tray with sliding shower door (to all en-suites)
- Polished chrome electric heated towel rail
- Fixed mirror sheet to basin wall
- Shaver socket



Utility / Electricals

- Downlighting to kitchen
- Downlighting to bathrooms & en-suite
- Pendant lighting to all other rooms
- White switches and sockets throughout

General

- White walls and ceilings throughout
- Each apartment also benefits from an allocated car parking space

Within easy reach

| | | |
|--|--------------------------------|------------|
| | Maidenhead station by foot | 14 minutes |
| | Maidenhead town centre by foot | 17 minutes |
| | Braywick Recreational Ground | 21 minutes |
| | Heathrow by car | 27 minutes |
| | Paddington Station by rail | 42 minutes |

Travel times taken from <http://maps.google.com> and are for guidance only.

Whilst every effort has been taken to ensure the accuracy of the information provided, the specifications has been supplied as a guide and One Housing Group reserve the right to amend the specification as necessary and without notice.

Boyn Heights
Maidenhead

Type A two bedroom apartment
Apartment 2, 8*, 11, 17*, 20 & 26*

Dimensions

Kitchen/Living/Dining
7.13m x 3.85m 23'5" x 12'8"

Bedroom 1
4.72m x 3.19m 15'6" x 10'6"

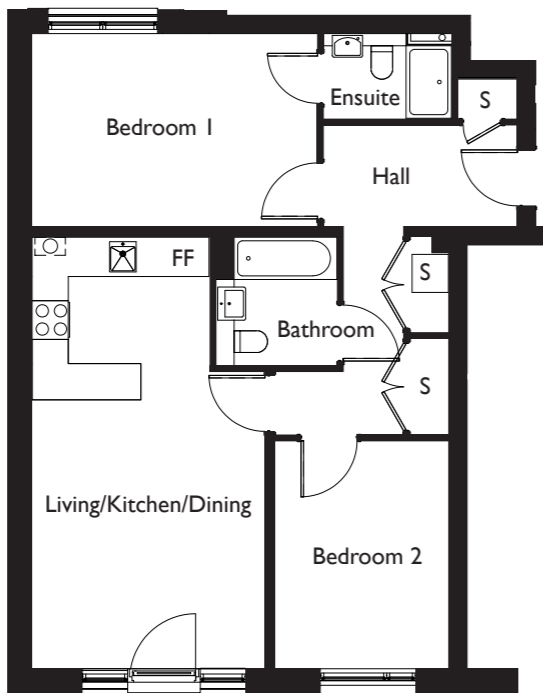
Bedroom 2
3.76m x 2.87m 12'4" x 9'5"

Bathroom
4.09m²

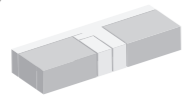
Internal Area
75.2m²

S = Store
FF = Fridge Freezer
WD = Washer/dryer

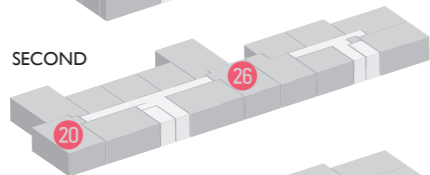
*opposite handing to the illustrated floor plan



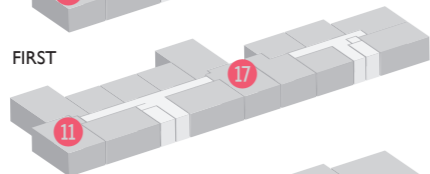
THIRD



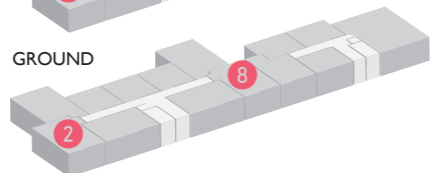
SECOND



FIRST



GROUND



Layouts provide approximate measurements only. Dimensions, which are taken from the indicated points of measurement, are for guidance only and are not intended to be used for carpet sizes, appliance space or items of furniture. Areas are provided as gross internal areas and may vary. Bathroom and kitchen layouts are indicative only and are subject to change. Layout sizes may vary slightly from one another - please refer to the price list or the sales team for more details. The information contained within this document does not constitute part of any offer, contract or warranty. Whilst the plans have been prepared with all due care for the convenience of the intending purchaser, the information contained herein is a preliminary guide only. Please speak to a member of the Sale Team for an Energy and Environmental Impact Rating.

Boyn Heights
Maidenhead

Type B two bedroom apartment
Apartment 1, 9*, 10, 18*, 19 & 27*

Dimensions

Kitchen/Living/Dining
6.95m x 4.05m 22'10" x 13'3"

Bedroom 1
4.78m x 2.88m 15'8" x 9'5"

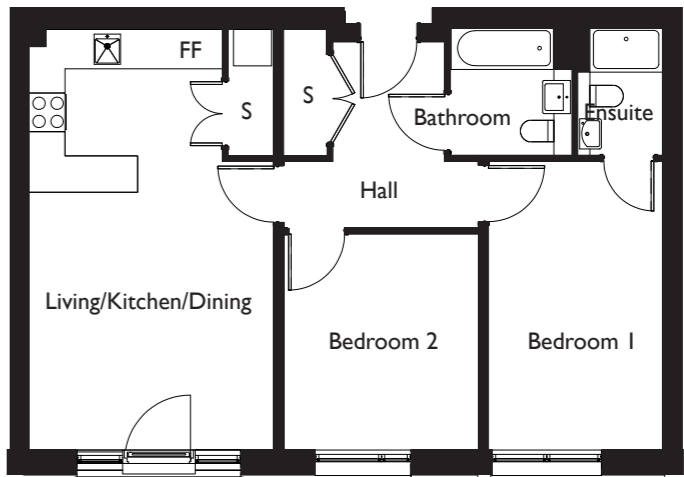
Bedroom 2
3.56m x 3.22m 11'8" x 10'7"

Bathroom
4.08m²

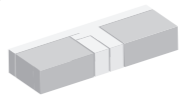
Internal Area
72.71m²

S = Store
FF = Fridge Freezer
WD = Washer/dryer

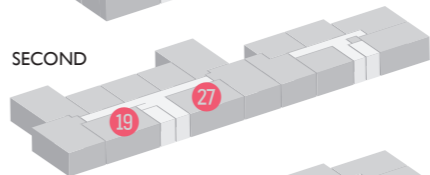
*opposite handing to the illustrated floor plan



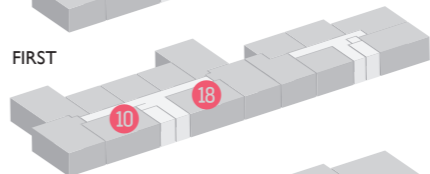
THIRD



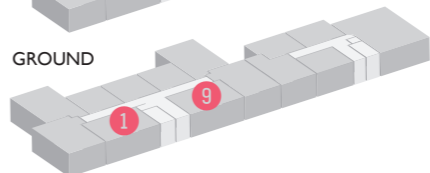
SECOND



FIRST



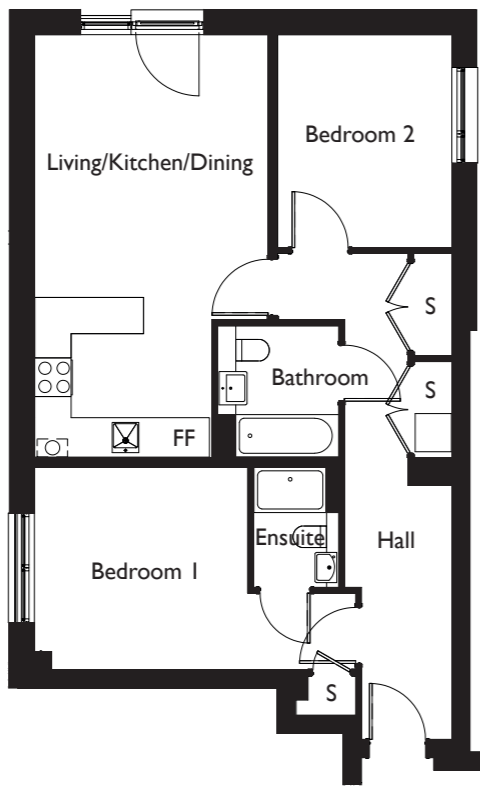
GROUND



Layouts provide approximate measurements only. Dimensions, which are taken from the indicated points of measurement, are for guidance only and are not intended to be used for carpet sizes, appliance space or items of furniture. Areas are provided as gross internal areas and may vary. Bathroom and kitchen layouts are indicative only and are subject to change. Layout sizes may vary slightly from one another - please refer to the price list or the sales team for more details. The information contained within this document does not constitute part of any offer, contract or warranty. Whilst the plans have been prepared with all due care for the convenience of the intending purchaser, the information contained herein is a preliminary guide only. Please speak to a member of the Sale Team for an Energy and Environmental Impact Rating.

Boyn Heights
Maidenhead

Type C two bedroom apartment
Apartment 3, 7*, 12 & 16*



Dimensions

Kitchen/Living/Dining
6.98m x 3.86m 22'11" x 12'8"

Bedroom 1
3.52m x 3.35m 11'7" x 11'0"

Bedroom 2
3.51m x 2.87m 11'6" x 9'5"

Bathroom
4.14m²

Internal Area
74.97m²

S = Store
FF = Fridge Freezer
WD = Washer/dryer

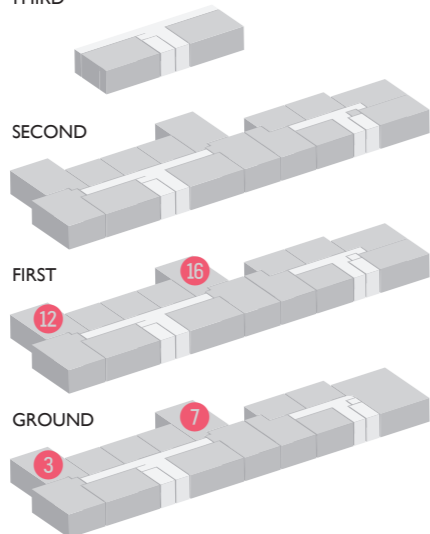
*opposite handing to the illustrated floor plan

THIRD

SECOND

FIRST

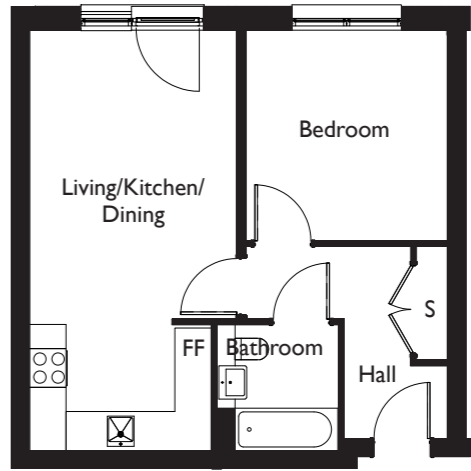
GROUND



Layouts provide approximate measurements only. Dimensions, which are taken from the indicated points of measurement, are for guidance only and are not intended to be used for carpet sizes, appliance space or items of furniture. Areas are provided as gross internal areas and may vary. Bathroom and kitchen layouts are indicative only and are subject to change. Layout sizes may vary slightly from one another - please refer to the price list or the sales team for more details. The information contained within this document does not constitute part of any offer, contract or warranty. Whilst the plans have been prepared with all due care for the convenience of the intending purchaser, the information contained herein is a preliminary guide only. Please speak to a member of the Sale Team for an Energy and Environmental Impact Rating.

Boyn Heights
Maidenhead

Type D one bedroom apartment
Apartment 4, 5*, 6, 13, 14*, 15, 22, 23* & 24



Dimensions

Kitchen/Living/Dining
6.95m x 3.42m 22'10" x 11'3"

Bedroom
3.47m x 3.32m 11'5" x 10'11"

Bathroom
3.98m²

Internal Area
47.62m²

S = Store
FF = Fridge Freezer
WD = Washer/dryer

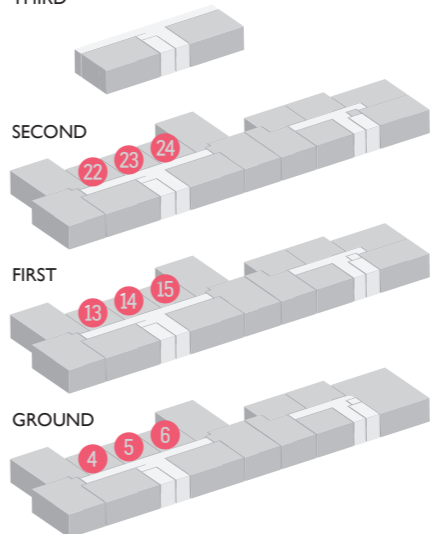
*opposite handing to the illustrated floor plan

THIRD

SECOND

FIRST

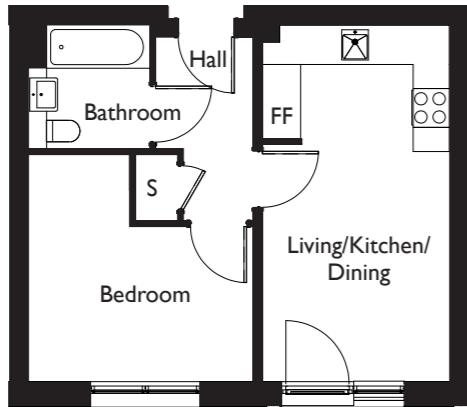
GROUND



Layouts provide approximate measurements only. Dimensions, which are taken from the indicated points of measurement, are for guidance only and are not intended to be used for carpet sizes, appliance space or items of furniture. Areas are provided as gross internal areas and may vary. Bathroom and kitchen layouts are indicative only and are subject to change. Layout sizes may vary slightly from one another - please refer to the price list or the sales team for more details. The information contained within this document does not constitute part of any offer, contract or warranty. Whilst the plans have been prepared with all due care for the convenience of the intending purchaser, the information contained herein is a preliminary guide only. Please speak to a member of the Sale Team for an Energy and Environmental Impact Rating.

Boyn Heights
Maidenhead

Type E one bedroom apartment
Apartment 30, 34 & 40



Dimensions

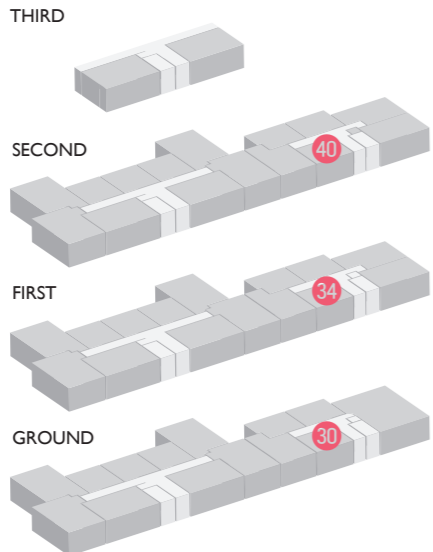
Kitchen/Living/Dining
5.89m x 3.09m 19'4" x 10'2"

Bedroom
3.75m x 3.70m 12'4" x 12'2"

Bathroom
3.91m²

Internal Area
40.7m²

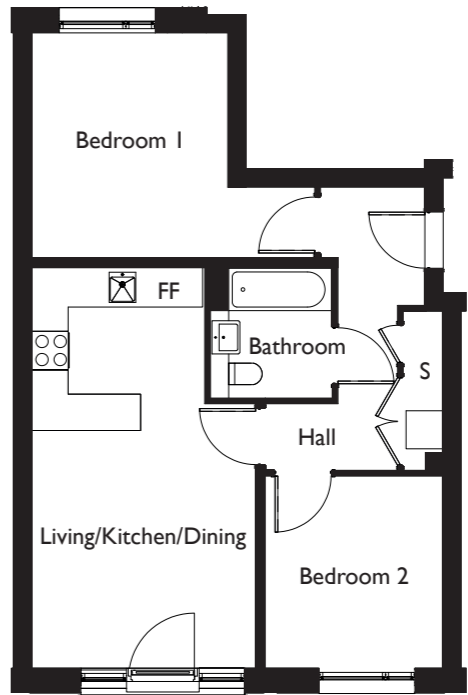
S = Store
FF = Fridge Freezer
WD = Washer/dryer



Layouts provide approximate measurements only. Dimensions, which are taken from the indicated points of measurement, are for guidance only and are not intended to be used for carpet sizes, appliance space or items of furniture. Areas are provided as gross internal areas and may vary. Bathroom and kitchen layouts are indicative only and are subject to change. Layout sizes may vary slightly from one another - please refer to the price list or the sales team for more details. The information contained within this document does not constitute part of any offer, contract or warranty. Whilst the plans have been prepared with all due care for the convenience of the intending purchaser, the information contained herein is a preliminary guide only. Please speak to a member of the Sale Team for an Energy and Environmental Impact Rating.

Boyn Heights
Maidenhead

Type F two bedroom apartment
Apartments 31, 35 & 41



Dimensions

Kitchen/Living/Dining
6.61m x 3.70m 21'8" x 12'2"

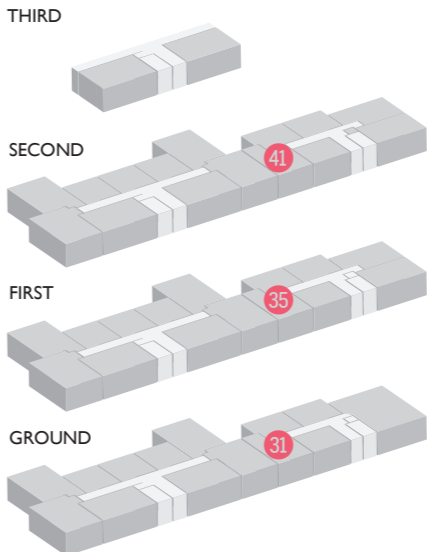
Bedroom 1
3.72m x 3.24m 12'2" x 10'8"

Bedroom 2
3.17m x 2.92m 10'5" x 9'7"

Bathroom
4.12m²

Internal Area
61.66m²

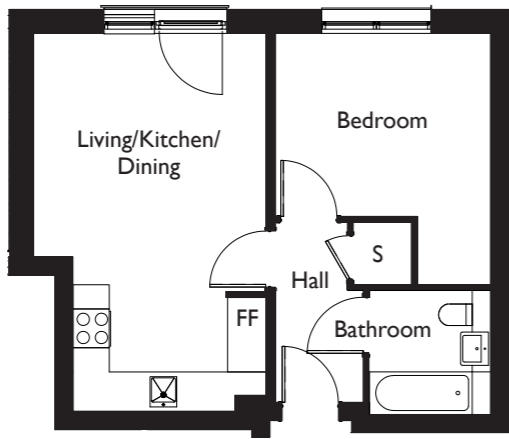
S = Store
FF = Fridge Freezer
WD = Washer/dryer



Layouts provide approximate measurements only. Dimensions, which are taken from the indicated points of measurement, are for guidance only and are not intended to be used for carpet sizes, appliance space or items of furniture. Areas are provided as gross internal areas and may vary. Bathroom and kitchen layouts are indicative only and are subject to change. Layout sizes may vary slightly from one another - please refer to the price list or the sales team for more details. The information contained within this document does not constitute part of any offer, contract or warranty. Whilst the plans have been prepared with all due care for the convenience of the intending purchaser, the information contained herein is a preliminary guide only. Please speak to a member of the Sale Team for an Energy and Environmental Impact Rating.

Boyn Heights
Maidenhead

Type G one bedroom apartment
Apartments 32, 36 & 42



Dimensions

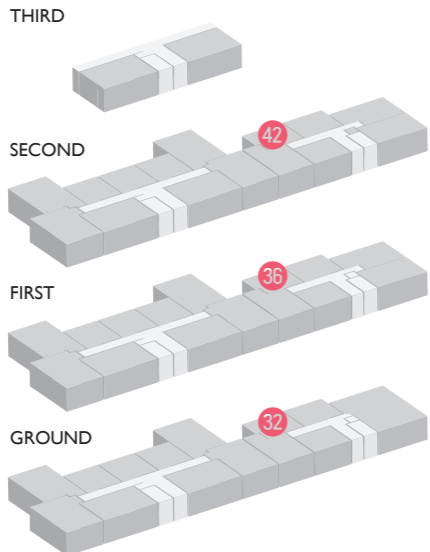
Kitchen/Living/Dining
6.24m x 3.84m 20'6" x 12'7"

Bedroom
4.16m x 3.55m 13'8" x 11'8"

Bathroom
3.91m²

Internal Area
45.38m²

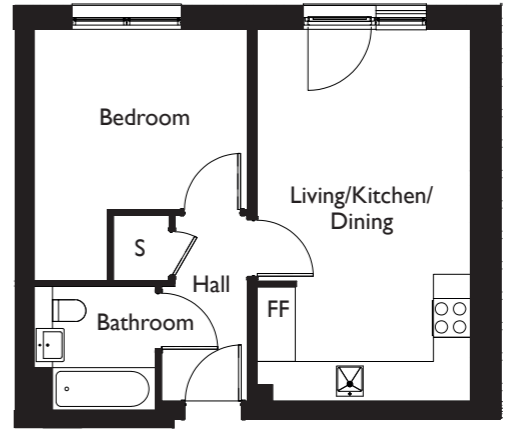
S = Store
FF = Fridge Freezer
WD = Washer/dryer



Layouts provide approximate measurements only. Dimensions, which are taken from the indicated points of measurement, are for guidance only and are not intended to be used for carpet sizes, appliance space or items of furniture. Areas are provided as gross internal areas and may vary. Bathroom and kitchen layouts are indicative only and are subject to change. Layout sizes may vary slightly from one another - please refer to the price list or the sales team for more details. The information contained within this document does not constitute part of any offer, contract or warranty. Whilst the plans have been prepared with all due care for the convenience of the intending purchaser, the information contained herein is a preliminary guide only. Please speak to a member of the Sale Team for an Energy and Environmental Impact Rating.

Boyn Heights
Maidenhead

Type H one bedroom apartment
Apartments 33, 37 & 43



Dimensions

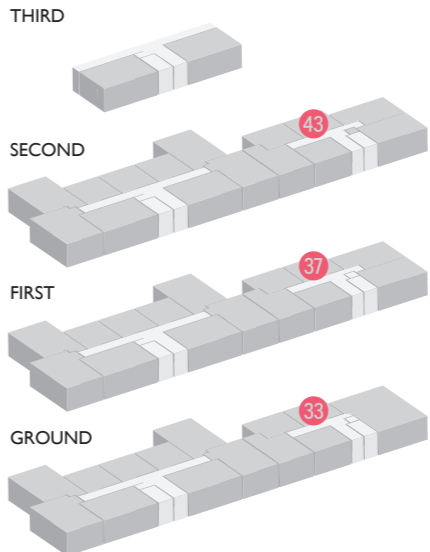
Kitchen/Living/Dining
6.14m x 3.51m 20'2" x 11'6"

Bedroom
4.16m x 3.52m 13'8" x 12'7"

Bathroom
3.91m²

Internal Area
44.48m²

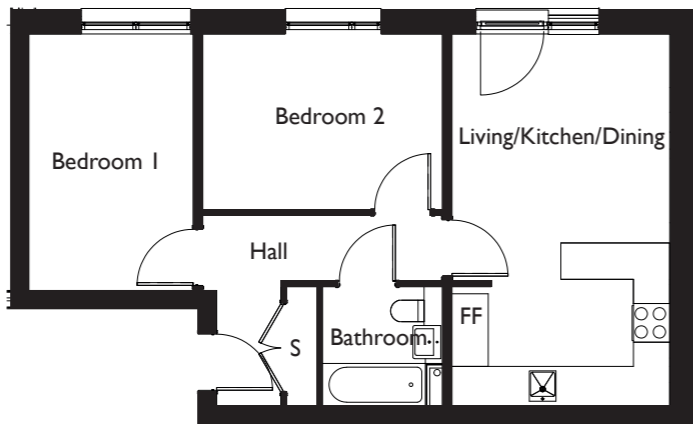
S = Store
FF = Fridge Freezer
WD = Washer/dryer



Layouts provide approximate measurements only. Dimensions, which are taken from the indicated points of measurement, are for guidance only and are not intended to be used for carpet sizes, appliance space or items of furniture. Areas are provided as gross internal areas and may vary. Bathroom and kitchen layouts are indicative only and are subject to change. Layout sizes may vary slightly from one another - please refer to the price list or the sales team for more details. The information contained within this document does not constitute part of any offer, contract or warranty. Whilst the plans have been prepared with all due care for the convenience of the intending purchaser, the information contained herein is a preliminary guide only. Please speak to a member of the Sale Team for an Energy and Environmental Impact Rating.

Boyn Heights
Maidenhead

Type I two bedroom apartment
Apartments 38 & 44



Dimensions

Kitchen/Living/Dining
6.14m x 3.60m 20'2" x 11'10"

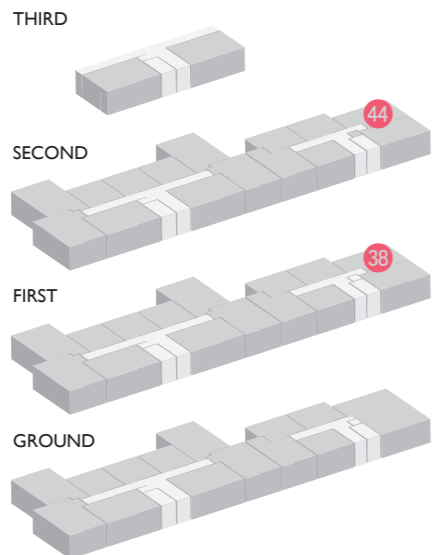
Bedroom 1
4.16m x 3.52m 13'11" x 8'11"

Bedroom 2
3.95m x 2.90m 13' x 9'6"

Bathroom
3.7m²

Internal Area
59.22m²

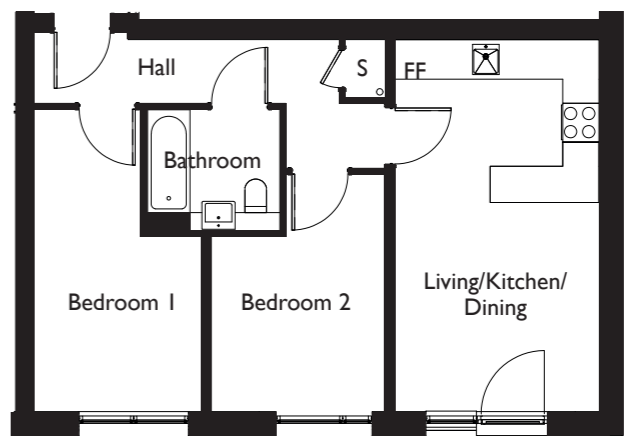
S = Store
FF = Fridge Freezer
WD = Washer/dryer



Layouts provide approximate measurements only. Dimensions, which are taken from the indicated points of measurement, are for guidance only and are not intended to be used for carpet sizes, appliance space or items of furniture. Areas are provided as gross internal areas and may vary. Bathroom and kitchen layouts are indicative only and are subject to change. Layout sizes may vary slightly from one another - please refer to the price list or the sales team for more details. The information contained within this document does not constitute part of any offer, contract or warranty. Whilst the plans have been prepared with all due care for the convenience of the intending purchaser, the information contained herein is a preliminary guide only. Please speak to a member of the Sale Team for an Energy and Environmental Impact Rating.

Boyn Heights
Maidenhead

Type J two bedroom apartment
Apartments 39 & 45



Dimensions

Kitchen/Living/Dining
6.14m x 3.37m 20'2" x 11'1"

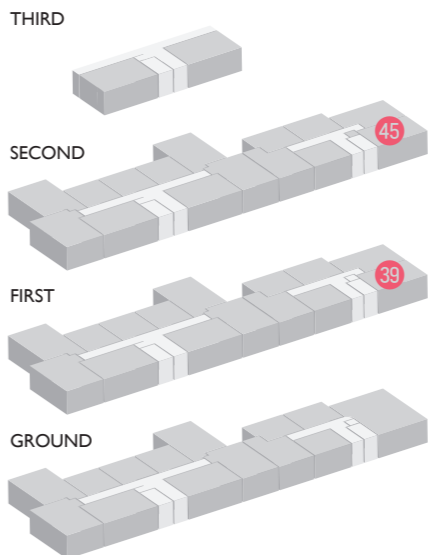
Bedroom 1
5m x 2.77m 16'5" x 9'1"

Bedroom 2
2.89m x 2.87m 9'6" x 9'5"

Bathroom
4.2m²

Internal Area
57.47m²

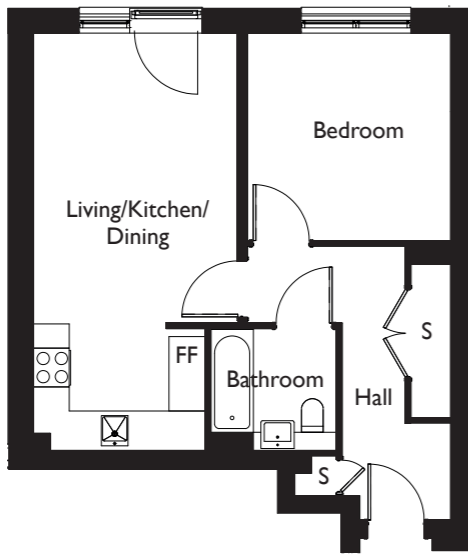
S = Store
FF = Fridge Freezer
WD = Washer/dryer



Layouts provide approximate measurements only. Dimensions, which are taken from the indicated points of measurement, are for guidance only and are not intended to be used for carpet sizes, appliance space or items of furniture. Areas are provided as gross internal areas and may vary. Bathroom and kitchen layouts are indicative only and are subject to change. Layout sizes may vary slightly from one another - please refer to the price list or the sales team for more details. The information contained within this document does not constitute part of any offer, contract or warranty. Whilst the plans have been prepared with all due care for the convenience of the intending purchaser, the information contained herein is a preliminary guide only. Please speak to a member of the Sale Team for an Energy and Environmental Impact Rating.

Boyn Heights
Maidenhead

Type K one bedroom apartment
Apartments 21 & 25*



Dimensions

Kitchen/Living/Dining
6.89m x 3.88m 22'7" x 12'9"

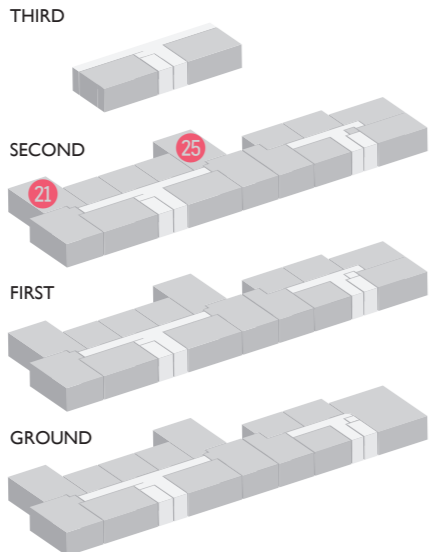
Bedroom
3.43m x 3.35m 11'3" x 11'

Bathroom
3.96m²

Internal Area
50.12m²

S = Store
FF = Fridge Freezer
WD = Washer/dryer

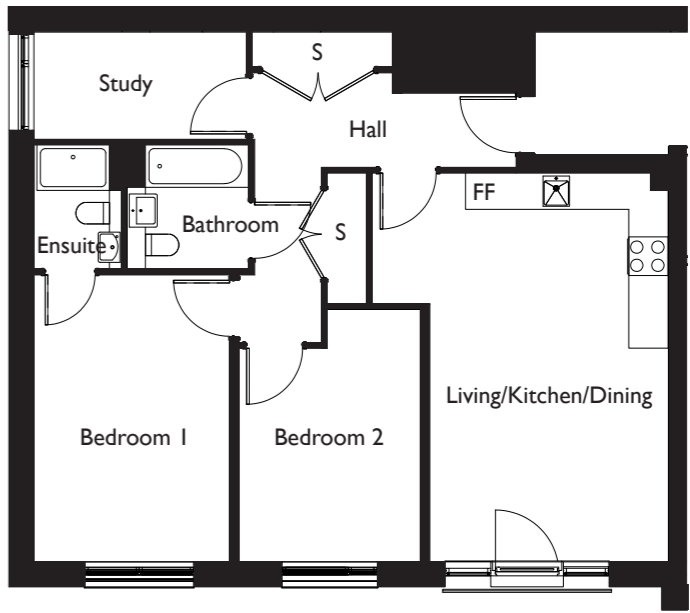
*opposite handing to the illustrated floor plan



Layouts provide approximate measurements only. Dimensions, which are taken from the indicated points of measurement, are for guidance only and are not intended to be used for carpet sizes, appliance space or items of furniture. Areas are provided as gross internal areas and may vary. Bathroom and kitchen layouts are indicative only and are subject to change. Layout sizes may vary slightly from one another - please refer to the price list or the sales team for more details. The information contained within this document does not constitute part of any offer, contract or warranty. Whilst the plans have been prepared with all due care for the convenience of the intending purchaser, the information contained herein is a preliminary guide only. Please speak to a member of the Sale Team for an Energy and Environmental Impact Rating.

Boyn Heights
Maidenhead

Type L two bedroom apartment
Apartments 28 & 29*



Dimensions

Kitchen/Living/Dining
6.42m x 3.94m 21'1" x 12'11"

Bedroom 1
4.75m x 3.23m 15'7" x 10'7"

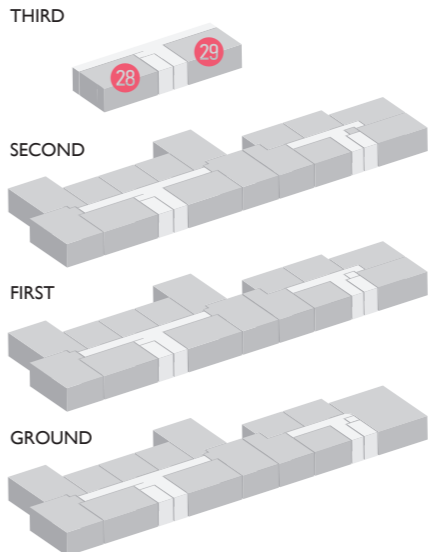
Bedroom 2
4.17m x 2.99m 13'8" x 9'10"

Bathroom
3.92m²

Internal Area
84.09m²

S = Store
FF = Fridge Freezer
WD = Washer/dryer

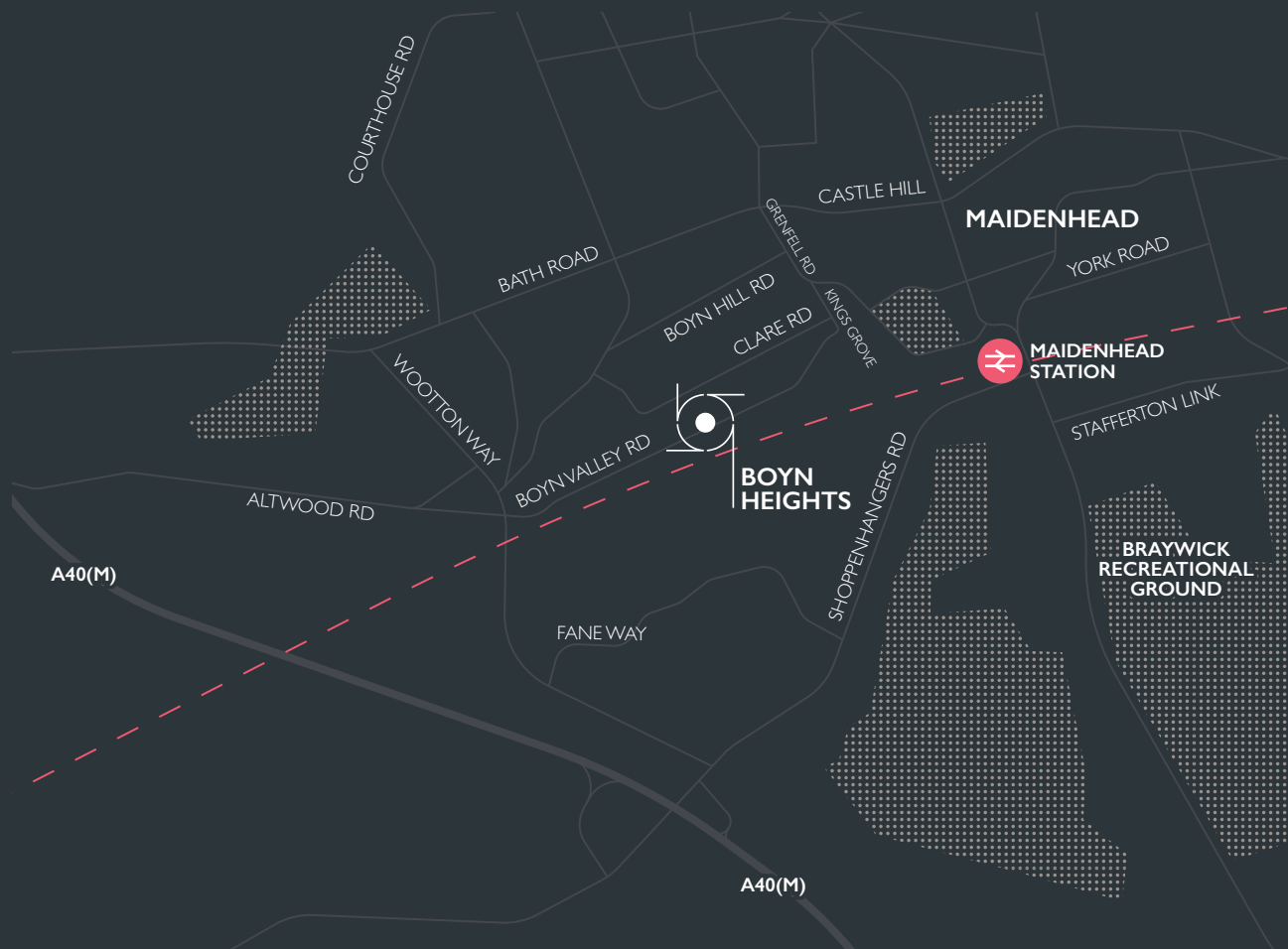
*opposite handing to the illustrated floor plan



Layouts provide approximate measurements only. Dimensions, which are taken from the indicated points of measurement, are for guidance only and are not intended to be used for carpet sizes, appliance space or items of furniture. Areas are provided as gross internal areas and may vary. Bathroom and kitchen layouts are indicative only and are subject to change. Layout sizes may vary slightly from one another - please refer to the price list or the sales team for more details. The information contained within this document does not constitute part of any offer, contract or warranty. Whilst the plans have been prepared with all due care for the convenience of the intending purchaser, the information contained herein is a preliminary guide only. Please speak to a member of the Sale Team for an Energy and Environmental Impact Rating.

Location

Boyn Valley Road, Maidenhead SL6 4FU



Shared Ownership at Boyn Heights

Disclaimer - Shared Ownership is an excellent way for people to take their first step onto the property ladder.

You can buy a minimum share of 35% applicable on certain plots and subject to criteria up to a maximum of 75% of the property's value and pay a subsidised rent on the remaining share to One Housing.

You will need a small deposit at the outset – generally a minimum of 5% of your share, subject to conditions – and you will need to raise a mortgage on the rest of the sum required. Speak to our sales consult for more information.

One Housing Living better

One Housing is a leading developer of high quality homes for private sale, rent, shared ownership and affordable rent as well as a social enterprise providing housing, care and support across London and the South East.

We're commercially driven and dynamic, but at the same time we're passionate about making a positive difference to people's lives and communities. We are a non-profit organisation: we use our commercial success as a housing developer to provide high quality, affordable homes and services that foster aspiration, independence and well-being.

We plan to develop more than 5,000 new homes over the next 10 years, with at least 50% built for affordable homes. The profits from the sale of our private homes will be used to cross-subsidise homes and services that meet our social objectives. We believe in creating balanced and sustainable communities, as well as placing the customer at the heart of everything we do.

We are focused on designing and building homes to meet our customers' needs and aspirations. We are dedicated to delivering high quality homes and providing a good customer journey, this is reflected in the many housing awards we have won.

Contact us today
0207 852 4300

sharedownership@eu.jll.com

One Housing 

JLL is the sales agent appointed by One Housing for Boyn Heights