



Canalside

A collection of modern 2 bedroom apartments


Abundance of charm

Located near to East Wichel Park and Wichlestowe Ponds, Canalside is a modern development of new homes combining convenience and charm, with easy access to both countryside and town centre living in just a few short minutes.

These modern 2 bedroom apartments come complete with modern fitted kitchen in an open-plan living area, stylish bathroom suite and excellent storage space. All apartments benefit from an allocated parking space, and select plots feature a Juliet balcony.



-  **The Coate, Burderop, Chichester and Cherwell**
-  **Parking spaces**

 **Canalside,**
Watermill House,
Chaddington Stand,
Swindon,
Wiltshire,
SN17DS





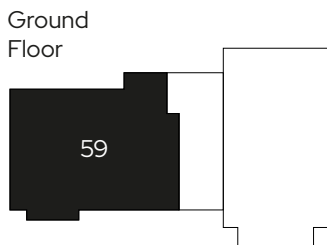
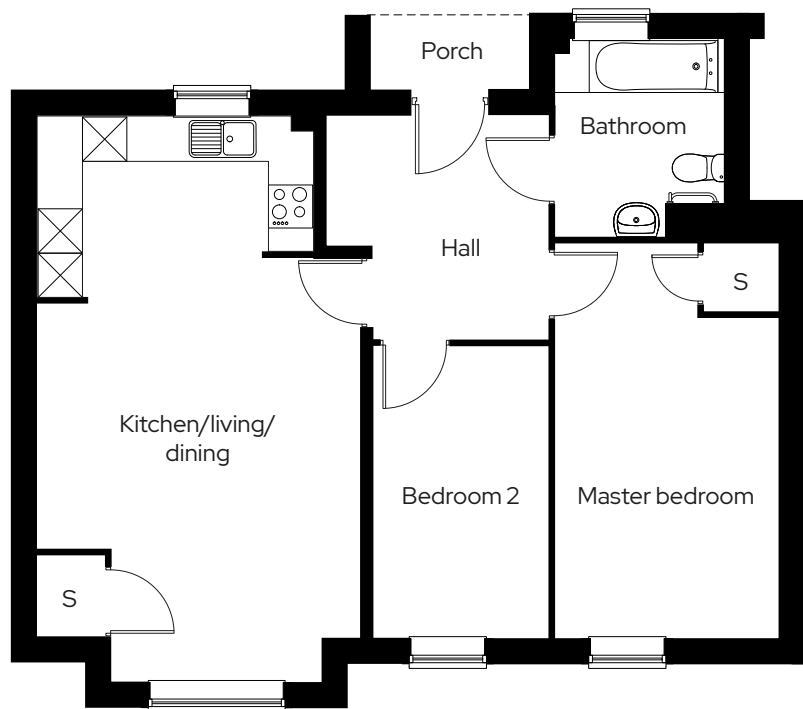
The Coate

2 bed ground floor apartment
Plot 59 - with wheelchair access

2  1  1 

Room

Kitchen/living/dining	4.3m x 6.9m
Master bedroom	3.0m x 5.3m
Bedroom 2	2.3m x 3.9m



S Storage

We operate a policy of continuous product development and individual features such as windows and elevational treatments may vary. Consequently, particulars contained within this document should be treated as general guidance only. They do not constitute a contract, part of a contract or a warranty. Computer generated images and photographs are for illustration purposes only and may not accurately depict individual plots. Dimensions provided are for general guidance and are not intended to be used for carpet sizes, appliances, spaces or items of furniture. All dimensions are maximum.

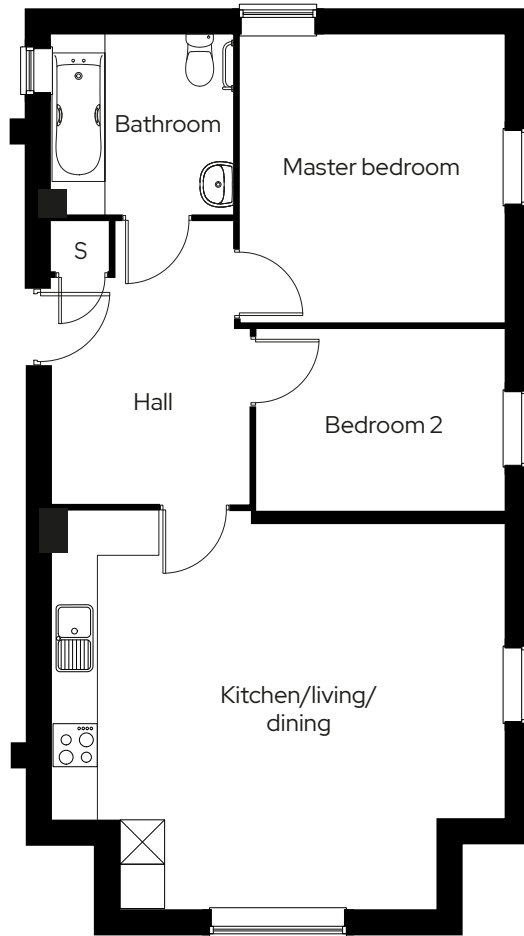
The Burderop

2 bed ground floor apartment
Plot 60 - with wheelchair access

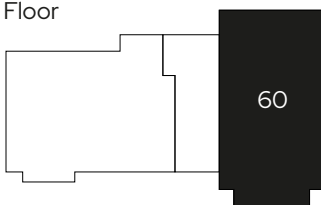
2  1  1 

Room

Kitchen/living/dining	6.0m x 5.1m
Master bedroom	3.5m x 3.9m
Bedroom 2	3.4m x 2.4m



Ground Floor



S Storage

We operate a policy of continuous product development and individual features such as windows and elevational treatments may vary. Consequently, particulars contained within this document should be treated as general guidance only. They do not constitute a contract, part of a contract or a warranty. Computer generated images and photographs are for illustration purposes only and may not accurately depict individual plots. Dimensions provided are for general guidance and are not intended to be used for carpet sizes, appliances, spaces or items of furniture. All dimensions are maximum.

The Chichester

2 bedroom apartment
with juliet balcony
Plot 61, 63, 65

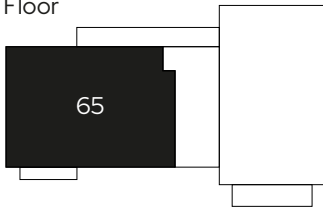
2  1  1 

Room

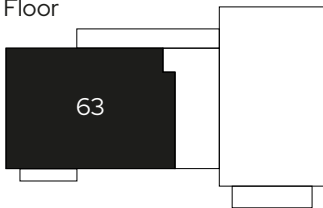
Kitchen/living/dining	3.7m x 6.9m
Master bedroom	3.0m x 4.5m
Bedroom 2	3.0m x 3.7m



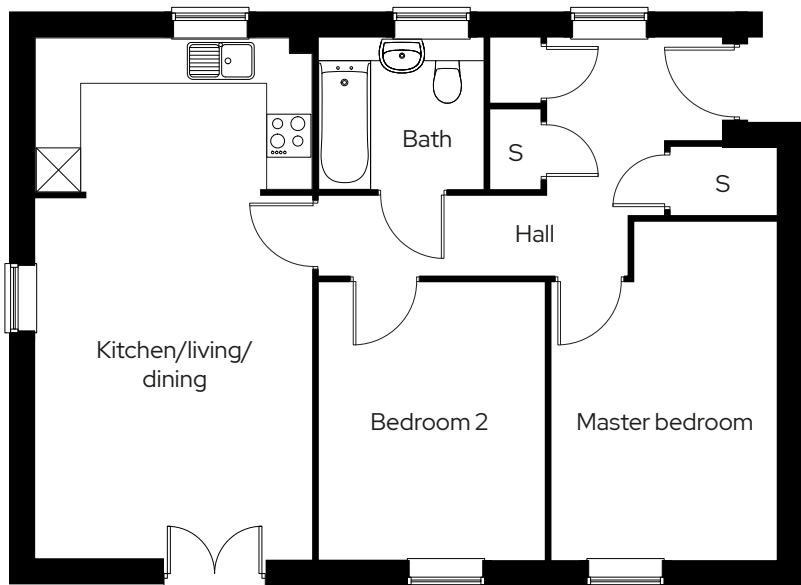
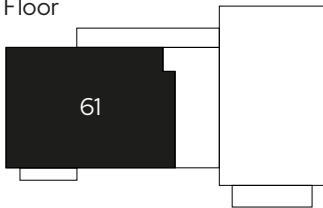
Third Floor



Second Floor



First Floor



S Storage

We operate a policy of continuous product development and individual features such as windows and elevational treatments may vary. Consequently, particulars contained within this document should be treated as general guidance only. They do not constitute a contract, part of a contract or a warranty. Computer generated images and photographs are for illustration purposes only and may not accurately depict individual plots. Dimensions provided are for general guidance and are not intended to be used for carpet sizes, appliances, spaces or items of furniture. All dimensions are maximum.

The Cherwell

2 bedroom apartment
with juliet balcony
Plot 62, 64, 66

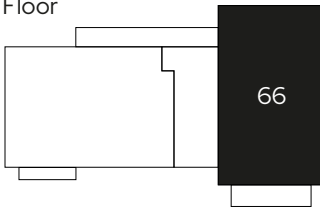
2  1  1 

Room

Kitchen/living/dining	6.0m x 3.7m
Master bedroom	6.0m x 3.0m
Bedroom 2	2.8m x 3.6m



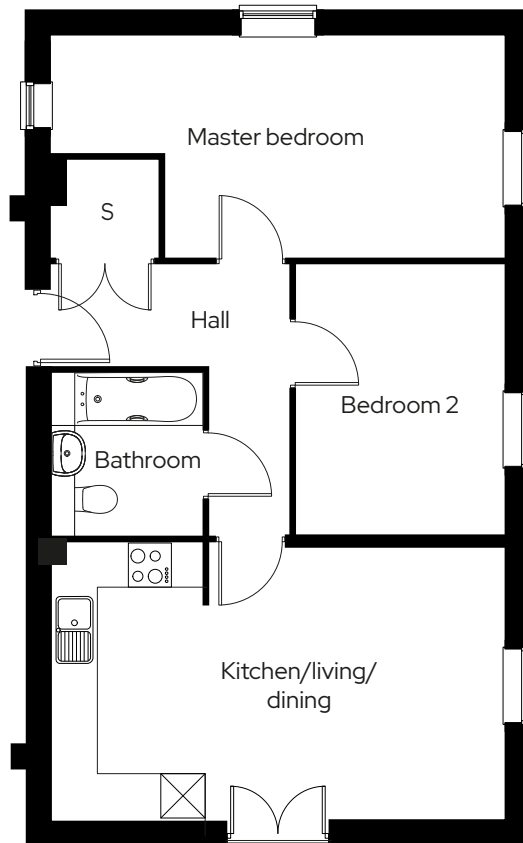
Third Floor



Second Floor



First Floor



S Storage

We operate a policy of continuous product development and individual features such as windows and elevational treatments may vary. Consequently, particulars contained within this document should be treated as general guidance only. They do not constitute a contract, part of a contract or a warranty. Computer generated images and photographs are for illustration purposes only and may not accurately depict individual plots. Dimensions provided are for general guidance and are not intended to be used for carpet sizes, appliances, spaces or items of furniture. All dimensions are maximum.

Get in touch

0300 330 0718

To find out more about shared ownership and the homes we offer, get in touch today.

→ sovereignliving.org.uk

Head office

Sovereign House
Basing View
Basingstoke
RG21 4FA

As one of the UK's leading shared ownership providers, Sovereign is passionate about giving everyone the opportunity to own their own home.

Our highly dedicated sales team has already helped thousands of people step onto the property ladder and our profit with a purpose principle means we can continue to help thousands more. Established, experienced, and affordable, we are proud to help more people live where they love.