

ROYAL ALBERT WHARF

THE ROYAL DOCKS
SHARED OWNERSHIP APARTMENTS

Your new neighbourhood.
Where the waterside meets the city.

Welcome to Royal Albert Wharf, a truly unique modern waterfront neighbourhood.

In a prime position, where the River Thames meets the Royal Docks, Royal Albert Wharf brings exciting new architecture into an historic setting, creating a vibrant new destination for work, rest and play.

The first phase of Royal Albert Wharf is bordered by water on three sides – with the Royal Albert Basin to the west, the River Thames to the east and a former shipping lock to the south. Work space, cafés and bars will line the dock where a 100-year old Victorian ‘Pump House’ still operates while a tree-lined square will act as a focal point for the community.

Digital illustration is indicative only.
Bridge structure yet to receive detailed design approval.
Dock edge protection shown is indicative only and subject to change.





SHARED OWNERSHIP

A new home is within reach with Shared Ownership at Royal Albert Wharf

Notting Hill Sales

Notting Hill Sales is the sales arm of one of London's leading housing associations, Notting Hill Housing. We manage more than 31,000 properties across the capital and are a member of the G15 group of major housing providers in London and the south east. We are a social enterprise with the purpose of providing affordable homes for those who could not otherwise afford them, with a range of tenancies to suit the needs of London's diverse population.

Our motivation is the positive impact that our quality housing has on people's lives, and we are proud to be providing homes that meet the needs of individuals, couples and families.

Founded in 1963, today Notting Hill Housing has assets worth more than £2 billion. We have an annual turnover of more than £300 million and work from offices across London in King's Cross. Notting Hill Housing has won several awards for creative, sustainable and high-quality design. We were also awarded Investors in People status in 2000, which we have kept ever since, and Investors in Communities status in 2003.

In everything, we strive to be innovative, and have achieved many firsts, including being the first housing association to offer Shared Ownership.

What is Shared Ownership?

Shared Ownership is a part-buy, part-rent government funded scheme designed to help people on moderate incomes get on the property ladder. The scheme is simple; you buy an affordable share of between 25% to 75% of the property's full market value and pay a subsidised rent on the remainder, with an option to purchase further shares later on. Shares available to buy at Royal Albert Wharf may vary, please speak to a member of the sales team for more information. For new build properties, Notting Hill Sales abides by the NHBC Consumer Code for Home Builders. For more information please visit www.nhbc.co.uk

What costs can I expect?

In addition to your rent and mortgage repayments you will pay a service charge. This will cover a variety of costs related to the management of the building, for example insurance, management fees, repairs, utilities, servicing and a contribution into a reserve fund that will be used to pay towards future major works and external redecorations. Please speak to a member of the sales team for more information.

Who is eligible?

Shared Ownership is for first-time buyers, tenants and other priority groups who want to become home owners. Priority groups include: first-time buyers, existing council or housing association tenants and local authority priority. We usually give priority to people who live or work in the borough where the property is located. However, anyone who meets the basic conditions may be able to buy a new home. We consider all applications on merit. If you feel you have a good case, it's well worth applying. Please note that eligibility criteria will change in April 2016.



1880

OPEN FOR
BUSINESS

Bigger, deeper and better than anything before, the new Albert Dock is carved out of unused east London marshland

B&W Images: Image Source: Museum of London.
Canary Wharf Image: Image Source: John Chase and Museum of London.
Digital illustration is indicative only and not to scale.



1921

BY ROYAL
APPOINTMENT

With a third new dock and a new 'Royal' name, everything from cargo ships to ocean liners are welcomed into the city



1950

THE DOCKLANDS'
HEYDAY

Rebuilt after playing a vital role during World War II, the Royal Docks enjoy a boom in trade until changes to trade transportation mean they begin to fall out of use



1981

A NEW
FUTURE

After the Docks' closure, regeneration begins, with the arrival of the DLR, Canary Wharf, London City Airport, Excel London, the University of East London and more



2014

ROYAL ALBERT WHARF
BUILD BEGINS

Building starts at Royal Albert Wharf as part of the regeneration of the Royal Docks, one of London's most talked-about redevelopment projects



2030

A VIBRANT 21ST CENTURY
DESTINATION

Almost all of what was formerly old dock buildings and land will have been completely transformed into exciting new places to live, work and play

HISTORY

If the River Thames is London's lifeblood, the Royal Docks were once its beating heart, drawing in produce and people from every corner of the globe.

At one time the largest enclosed working docks in the world, the Royal Docks introduced a new era of commerce to London during the second half of the 19th century. They were built in three phases: Victoria Dock was completed in 1855, closely followed by Albert Dock in 1880, while King George V opened the final dock in 1921, bestowing them with the 'Royal' name. Handling hundreds of cargoes of grain, tobacco, meat, fruit and exotic spices, in their heyday they also attracted countless passenger ships and even ocean liners.

Sadly, it was the advent of containerised cargo that spelt the end of the Royal Docks as they were, finally closing to commercial traffic in 1981. Since then, the arrival of the DLR and Canary Wharf, along with London City Airport, Excel London and the University of East London have brought regeneration to the area. Thousands flock to the Royal Docks: there are new homes, new industries, new attractions and even more on the way. And now you can discover it all for yourself at Royal Albert Wharf.

SHARED VISION



KATE DAVIES,
NOTTING HILL HOUSING GROUP

Notting Hill Housing was originally formed to meet the capital's unique housing challenges, so it's only natural that we are involved in this remarkable scheme.

Royal Albert Wharf will transform an existing disused site into an entirely new riverside destination. This area will provide a great place to live over the next few years, with a lively waterside atmosphere, great connectivity, jobs, education and a wide range of homes.

We have been particularly careful to provide a mix of homes to suit different needs and pockets. We are confident that this range of one, two and three bedroom Shared Ownership homes will make home ownership more achievable, especially for those seeking a home close to the financial district without the hefty price tag.



AKAY ZORLU,
MACCREANOR LAVINGTON ARCHITECTS

Royal Albert Wharf has a truly unique and charismatic character, which we were keen to respond to within the master plan. The vast open spaces, long views and varied landscapes are connected by a robust architecture, which has been carefully scaled to fit within this ex-industrial context.

Although the buildings are industrial in scale and architectural language, the materials have been selected to reinforce a domestic character, so that the people who live and work here feel a connection with their surroundings. New homes have been designed using a varied selection of textured bricks, with large recessed windows to flood interiors with light; deep balconies to allow residents their own private outdoor space and special metalwork detailing to give each building its own individual character. Buildings have also been arranged to create intimate streets and public squares away from the water as a counterpoint to the expansive nature of the river and docks.



GORDON BELL,
BELL FISCHER LANDSCAPE ARCHITECTS

Royal Albert Wharf has strong relationships both to the Royal Albert Basin and the River Thames, creating a distinctive waterfront setting and sense of place for the development. We wanted to emphasise this in the landscaping, respecting the dockside heritage and opening up most of the dockside.

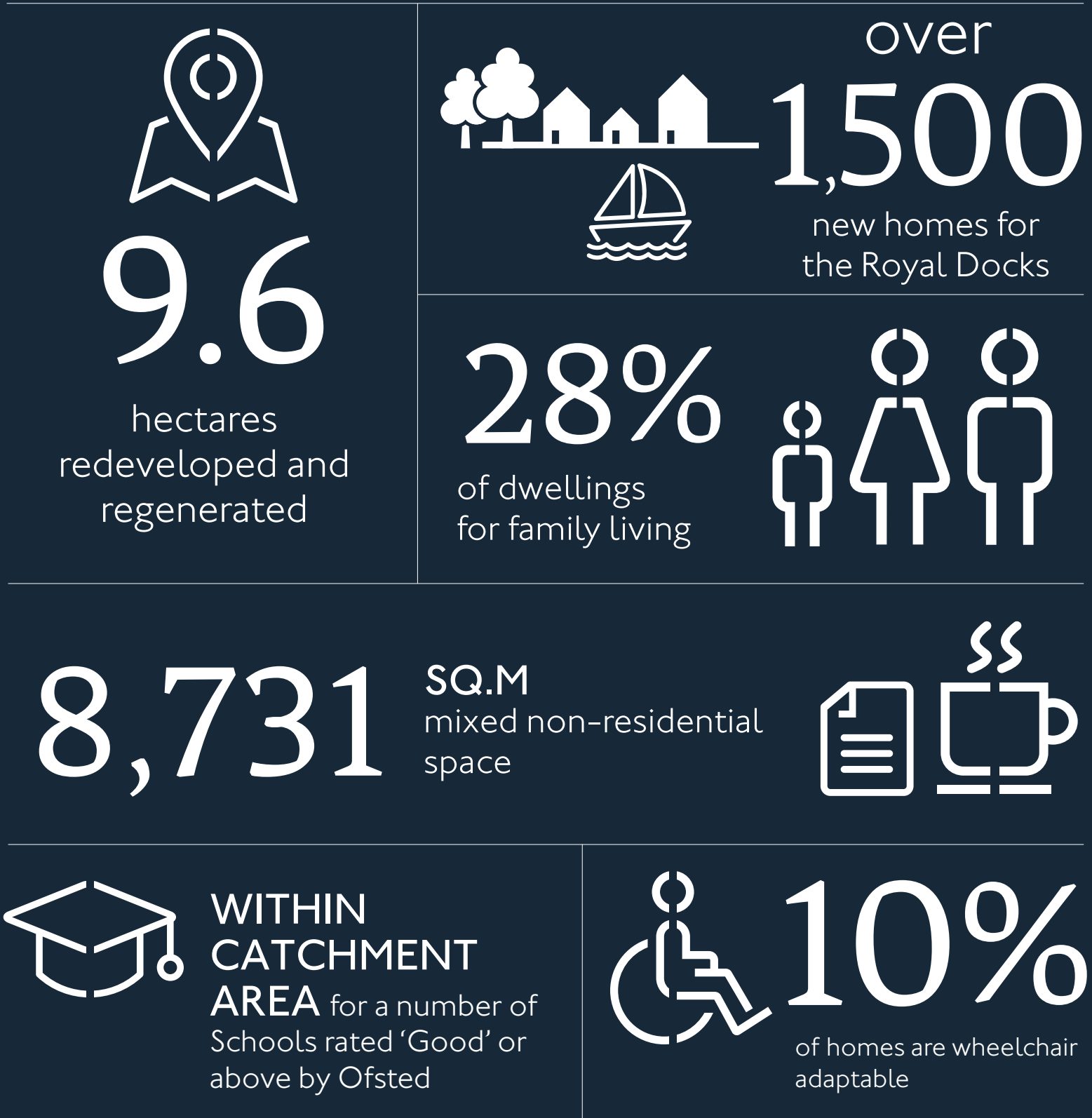
Significant areas of public open space have been included throughout the development. Around 150 new trees will be planted, including maple, birch, cherry, oak and lime, all at least four metres tall for instant impact! They will provide seasonal colour and interest and contribute to the wildlife value. Banks of flowering shrubs, hedges and vast swathes of fragrant perennials will attract butterflies, bees and insects. We have also provided brown and green roofs on the buildings, while there are podium courtyards on two of the blocks featuring communal gardens for the exclusive use of residents.

Creating Royal Albert Wharf has demanded an unprecedented scale of vision – one that is shared by everyone involved.

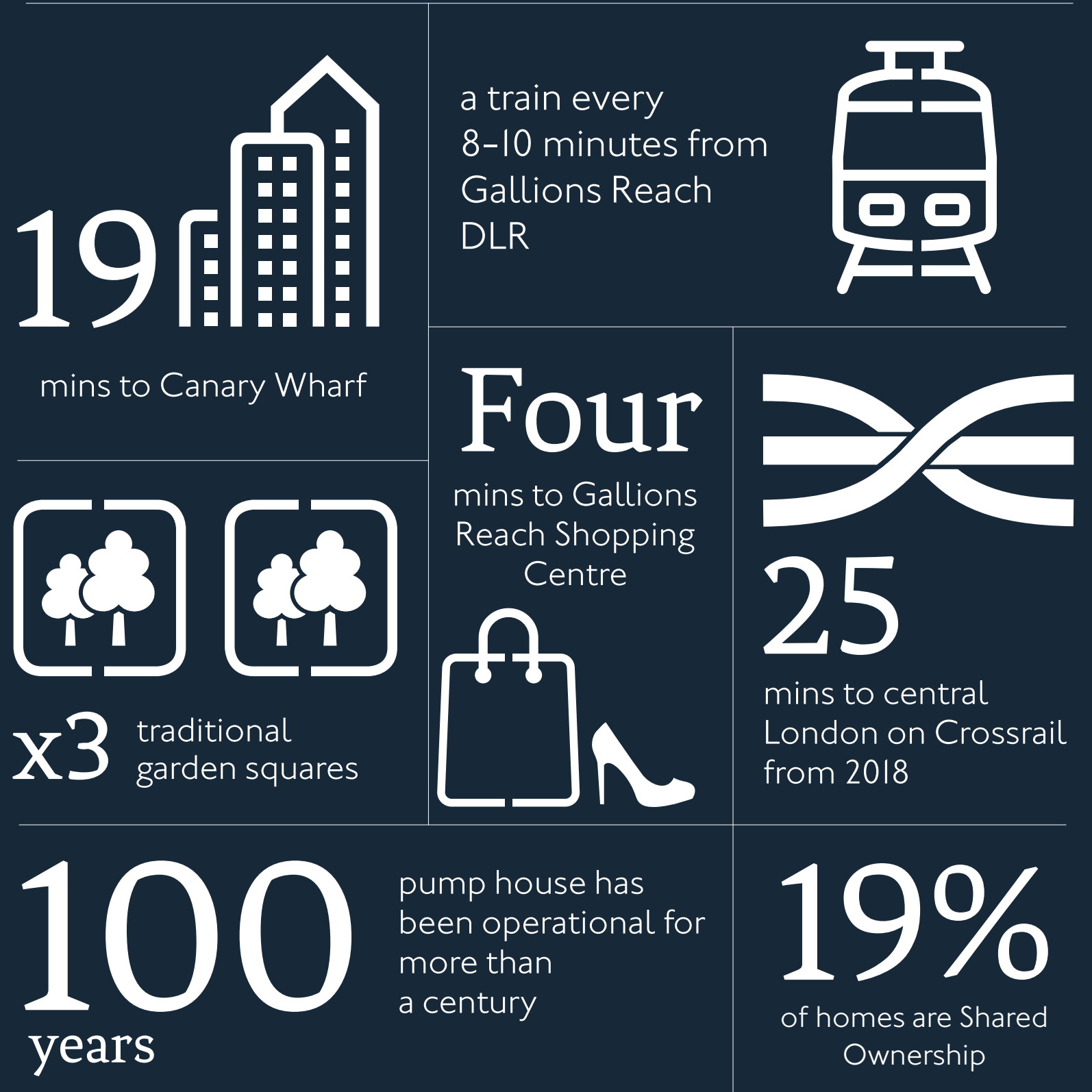
Undoubtedly one of the most exciting property development projects in London today, Royal Albert Wharf will ultimately form a brand new neighbourhood in East London: a vibrant, thriving and sustainable community in an historic riverside setting. The mix of commercial and residential buildings will seamlessly fuse the old with the new, while inspired architecture and landscaping will ensure it is an attractive, dynamic environment.

With the support of Newham Council, the GLA (Greater London Authority) and RoDMA, Notting Hill Housing is working closely with a highly creative team of professionals to masterplan and deliver the detail of this inspirational new development. Together, they have the will to make our shared vision a reality, creating a place where people will love to live, work and relax.





Development details taken from planning documentation (March 2014).



Travel times and distances based on a start point of Gallions Reach DLR and are taken from googlemaps.co.uk, tfl.co.uk and crossrail.co.uk Paris travel time based on departure from London City Airport. Travel to Gallions Reach Shopping Centre by bus. ALL information is accurate at time of print and these statistics are for the whole of the proposed Royal Albert Wharf development and may be subject to change. February 2016.

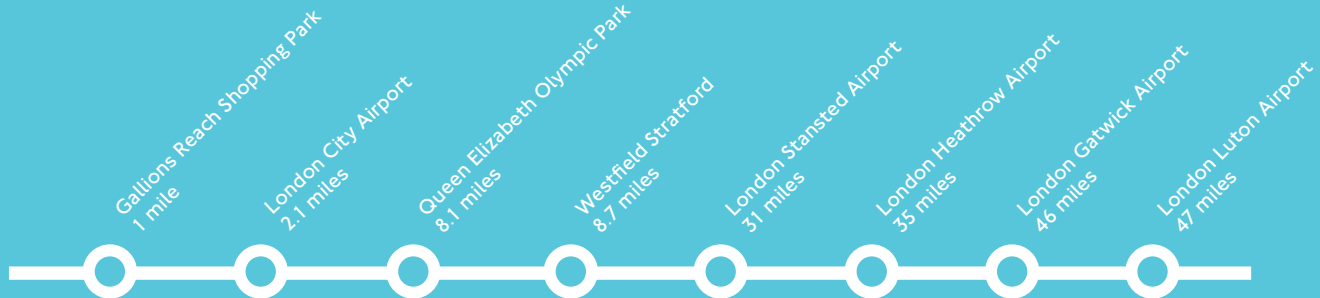
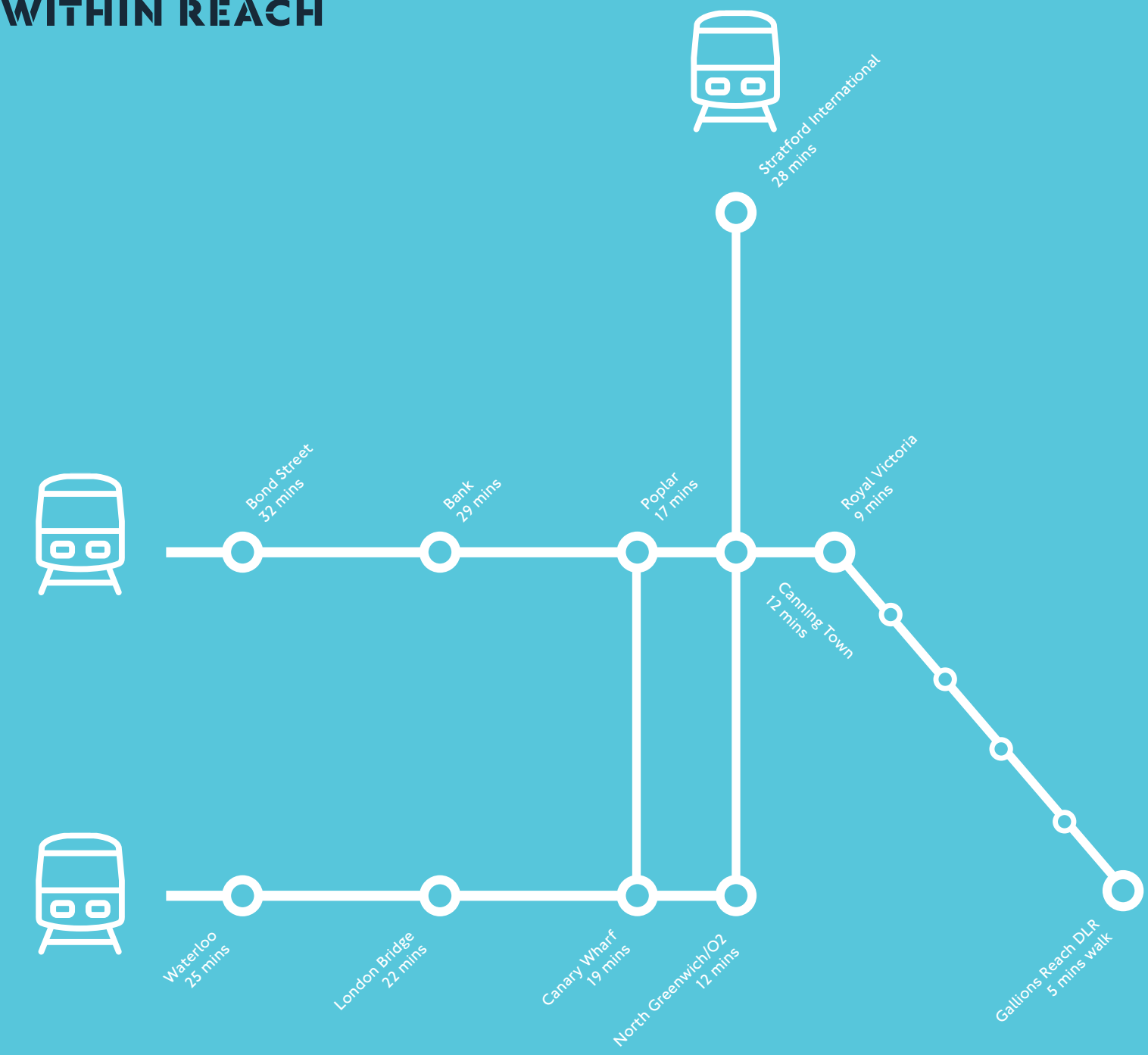
Your new neighbourhood.
Where the waterside meets the city.

CONNECTED

ROYAL
ALBERT
WHARF

Illustration is indicative only and not to scale.

MY EVERYTHING
WITHIN REACH



Travel times taken from tfl.gov.uk and are approximate, based on a Gallions Reach DLR station start point by public transport. Walking distances are taken from googlemaps.co.uk and are approximate. Travel times to points of interest are taken from tfl.gov.uk by public transport and are approximate.



OUT &
ABOUT

MY SOCIAL LIFE
IS LOOKING UP

BARS & RESTAURANTS

Explore the flavours of
the world within easy reach
of Royal Albert Wharf



FINE DINING

Fine dining and cosmopolitan café culture are all close to hand, from Tom's Kitchen and Iberica at Canary Wharf to Land's End Restaurant on the Sunborn Yacht. The area's diverse range of gastro-pubs and restaurants offer an eclectic menu of tastes from all corners of the globe.



A VIBRANT HUB

Whether you fancy elegant cocktails in a sophisticated bar or a big night out with friends, there is an excellent choice of venues within 30 minutes of Royal Albert Wharf. And if you're simply looking for a relaxed pint at a friendly local pub, The Reach Bar & Kitchen is just a few minutes' walk.

“The Royal Docks is already
thriving, with so much more
on the way”

MY TIME TO INDULGE MYSELF



HIGH END SHOPPING

Stylish boutiques and luxury lifestyle brands make shopping a real pleasure

ON YOUR DOORSTEP

Convenience is everything when you live at Royal Albert Wharf, with supermarkets and a wide range of high street names in the nearby Gallions Reach Shopping Park.

RETAIL HEAVEN

For more sophisticated spending, look no further than Westfield Stratford, while the chic stores at Canary Wharf – from Dunhill and Paul Smith to Michael Kors and The White Company – offer your essential designer fix. Alternatively, enjoy a unique shopping experience at one of East London's iconic markets, such as Queen's Market, Brick Lane Market or Columbia Road Flower Market.





MY VERY OWN
PLAYGROUND



THE GREAT OUTDOORS

From Beckton Park to Royal Victoria Gardens and the Thames Barrier Park, your new home has plenty of lush green space nearby. New parks and intimate open areas are planned within the neighbourhood, offering even more choice for walks, picnics or just relaxing in the open air.

There are ample opportunities to immerse yourself in the waters that surround Royal Albert Wharf, with sailing, rowing, wakeboarding, open water swimming and paddle-boarding all on offer. And, if you've got your own kayaking equipment, you can literally jump straight in the water! The London Regatta Centre is less than a mile away, where you'll be able to launch your kayak from and use the water at your own convenience.





YOUR

ROYAL
ALBERT
WHARF

THE ROYAL DOCKS



NEIGHBOUR

THE DOCK

BOYD BUILDING FLOOR PLANS



HOOD

A contemporary collection of 1, 2 & 3 bedroom
apartments in a unique waterside setting



Photography of the Shared Ownership Show Apartment

APARTMENT SPECIFICATION

KITCHEN|DINING|LIVING ROOMS

- Kitchens by Manhattan featuring soft-closing wall and base units in ‘Gloss Cappuccino’, square edged laminate worktops with upstand and stainless steel splashback to hob
- Stainless steel single bowl sink with Grohe mixer tap in chrome
- Zanussi appliances including integrated oven, ceramic hob, chimney hood, fridge freezer and dishwasher
- Zanussi washer dryer located in the hall cupboard or integrated into kitchen
- LED under-pelmet lighting to units
- Recycling bins included

BEDROOMS

- 80% wool mix carpet to bedrooms in ‘Pearl’
- Built in wardrobe with white doors and brushed satin ironmongery to bedroom one
- LED downlighters to bedrooms

BATHROOM

- Ceramic wall tiling in ‘Calx Grigio Gloss’
- Slip resistant ceramic floor tiles in ‘Calx Bianco’
- Ideal Standard sanitaryware with Grohe mixer taps
- Ideal Standard bath with Grohe thermostatically controlled mixer taps, shower over bath and clear glass bath screen
- Vanity unit with storage and full width mirror above
- Ladder style heated towel rail in chrome finish
- Chrome shaver socket adjacent to sink

EN SUITES

- Ceramic wall tiling in ‘Calx Grigio Gloss’
- Slip resistant ceramic floor tiles in ‘Calx Bianco’
- Ideal Standard sanitaryware with Grohe mixer tap in chrome
- Thermostatically controlled Grohe mixer tap and shower head
- Vanity unit with full width mirror above
- Ladder style heated towel rail in chrome finish
- Chrome shaver socket adjacent to sink

GENERAL

- Solid core flush faced front and internal doors painted in white with satin chrome finish ironmongery
- Walls finished in white vinyl matt emulsion with white satin painted architraves and skirting boards
- Laminate flooring in ‘Broadwalk Oak’ to the entrance hall, kitchen, living room and storage cupboards
- Double glazed windows featuring external ‘Dusty Grey’ aluminium framing and an internal white finish
- Radiators to bedrooms and living areas
- Built to Sustainable Homes Code Level 4

ELECTRICAL

- Data points for telephony and wireless broadband hub
- Telephone point in master bedroom
- Freeview and satellite socket in living room and master bedroom
- Brushed stainless steel light switches and electrical sockets to kitchen and in white plastic to other rooms
- Recessed LED energy efficient downlighters throughout
- Mains operated smoke and heat detector with battery back up

BALCONIES AND TERRACES

- Private outside space to all apartments
- Balconies and terraces are all paved or decked
- External lighting

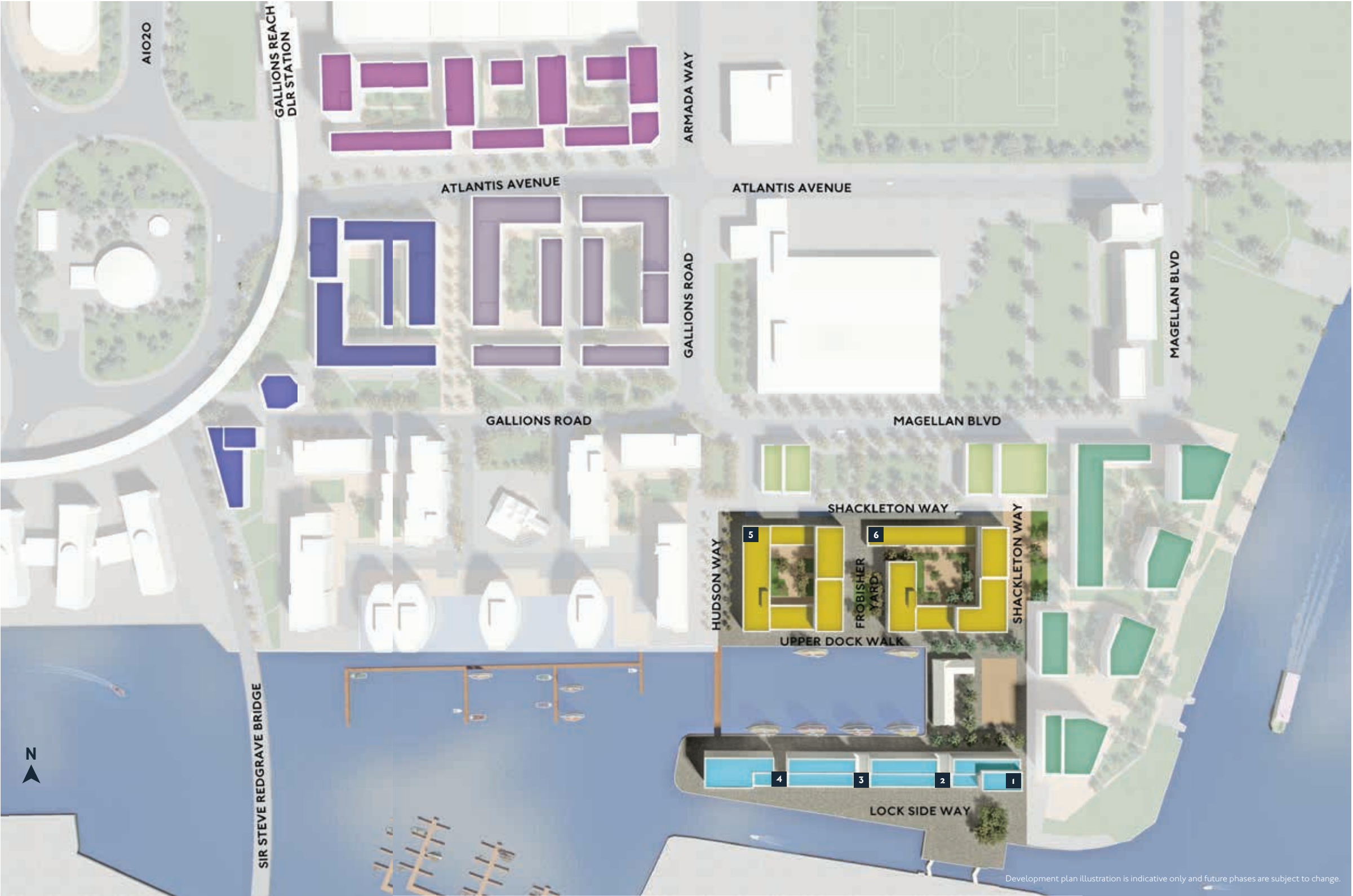
DEVELOPMENT PLAN

CURRENT PHASES

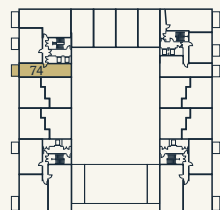
<div></div>	Lockside (private sale)
1.	Baillie Apartments
2.	Morton Apartments
3.	Rendel Apartments
4.	Aird Point
<div></div>	The Dock
5.	Boyd Building (Shared Ownership, affordable rent and social rent)
6.	Samuel Building (market rent, affordable rent and social rent)

FUTURE PHASES

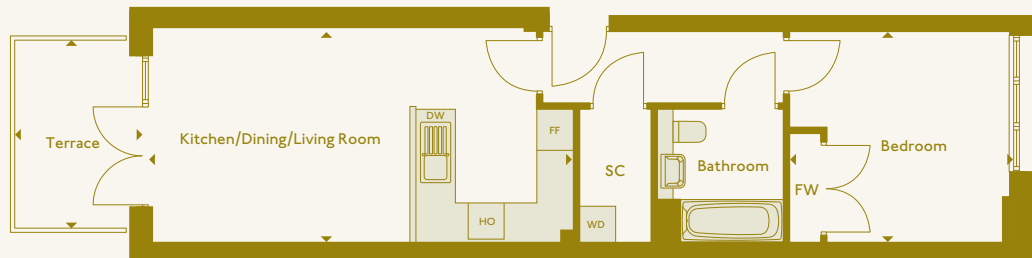
<div></div>	Riverside
<div></div>	Magellan Gardens
<div></div>	Gallions Landing
<div></div>	Gallions Pointe
<div></div>	Gallions Approach



ONE BEDROOM
APARTMENT



Second Floor

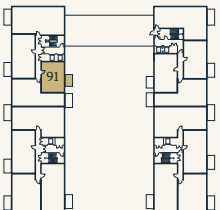


▲
APARTMENT 74

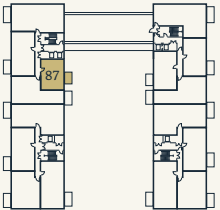
Kitchen/Dining/Living Room	7.02m x 3.56m	23'0" x 11'8"
Bedroom	3.70m x 3.48m	12'2" x 11'5"
Terrace	3.11m x 2.12m	10'2" x 6'11"
Gross internal area	50.0 m²	538 sqft

S - Storage SC - Services Cupboard WD - Washer Dryer FF - Fridge Freezer
HO - Hob & Oven DW - Dishwasher FW - Fitted Wardrobe

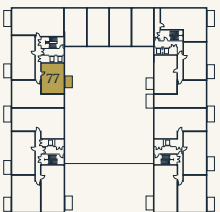
ONE BEDROOM
APARTMENT



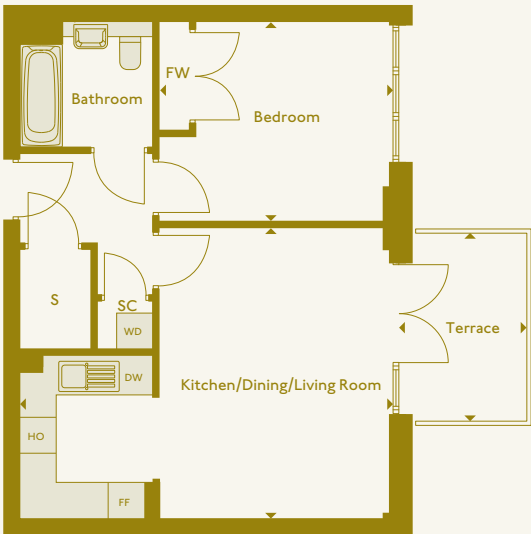
Sixth Floor



Fifth Floor



Third Floor

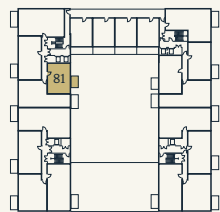


▲
APARTMENTS 77, 87 & 91

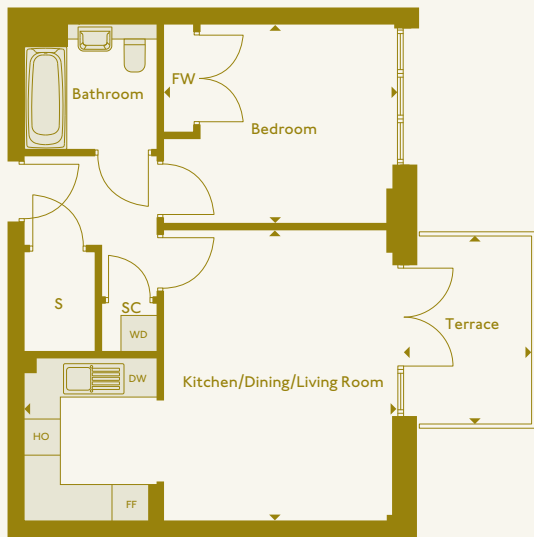
Kitchen/Dining/Living Room	6.17m x 4.82m	20'3" x 15'10"
Bedroom	3.87m x 3.35m	12'8" x 11'0"
Terrace	3.11m x 2.12m	10'2" x 6'11"
Gross internal area	50.2 m²	540 sqft

S - Storage SC - Services Cupboard WD - Washer Dryer FF - Fridge Freezer
HO - Hob & Oven DW - Dishwasher FW - Fitted Wardrobe

ONE BEDROOM
APARTMENT



Fourth Floor

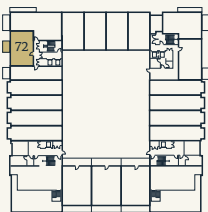


APARTMENT 81

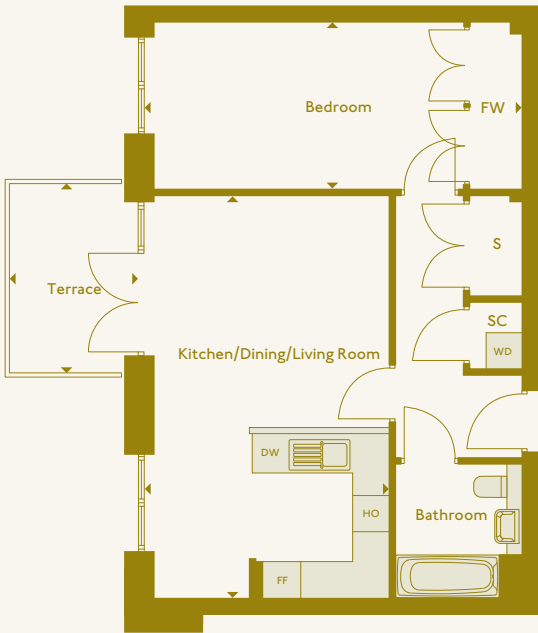
Kitchen/Dining/Living Room	6.17m x 4.82m	20'3" x 15'10"
Bedroom	3.87m x 3.35m	12'8" x 11'0"
Terrace	3.11m x 2.12m	10'2" x 6'11"
Gross internal area	50.2 m ²	540 sqft

S - Storage SC - Services Cupboard WD - Washer Dryer FF - Fridge Freezer
HO - Hob & Oven DW - Dishwasher FW - Fitted Wardrobe

ONE BEDROOM
APARTMENT



First Floor

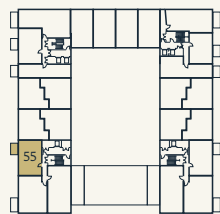


APARTMENT 72

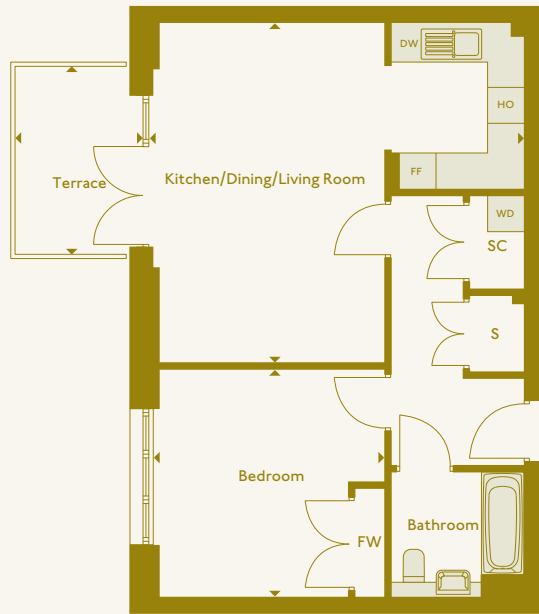
Kitchen/Dining/Living Room	6.61m x 4.03m	20'4" x 9'1"
Bedroom	6.20m x 2.78m	20'4" x 9'1"
Terrace	3.11m x 2.12m	10'2" x 6'11"
Gross internal area	57.6 m ²	620 sqft

S - Storage SC - Services Cupboard WD - Washer Dryer FF - Fridge Freezer
HO - Hob & Oven DW - Dishwasher FW - Fitted Wardrobe

ONE BEDROOM
APARTMENT



Second Floor

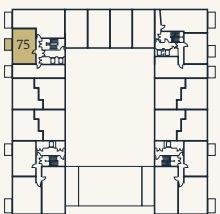


▲
APARTMENT 55

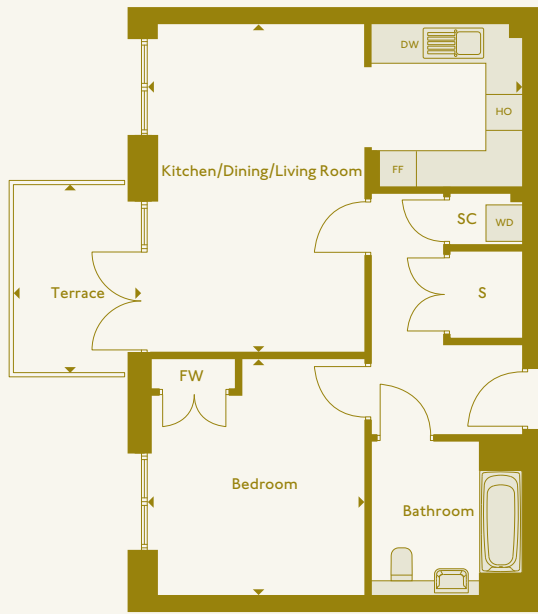
Kitchen/Dining/Living Room	6.19m x 5.62m	20'4" x 18'5"
Bedroom	3.89m x 3.77m	12'9" x 12'5"
Terrace	3.11m x 2.11m	10'2" x 6'11"
Gross internal area	57.8 m²	622 sqft

S - Storage SC - Services Cupboard WD - Washer Dryer FF - Fridge Freezer
HO - Hob & Oven DW - Dishwasher FW - Fitted Wardrobe

ONE BEDROOM
APARTMENT



Second Floor

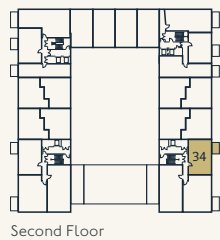


▲
APARTMENT 75

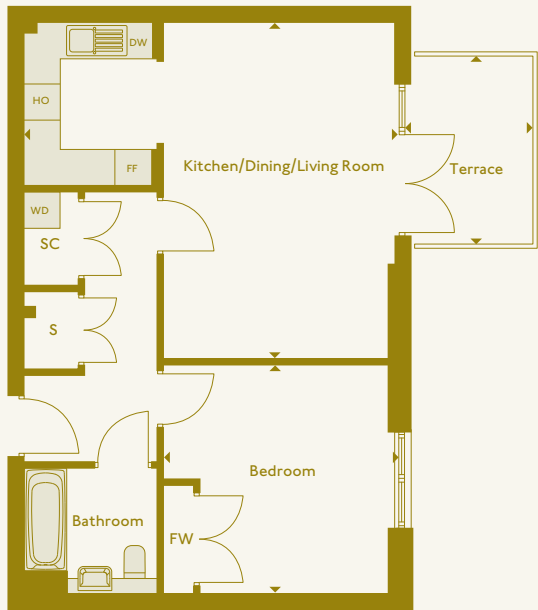
Kitchen/Dining/Living Room	6.20m x 5.43m	20'4" x 17'10"
Bedroom	3.93m x 3.70m	12'11" x 12'2"
Terrace	3.11m x 2.12m	10'2" x 6'11"
Gross internal area	57.8 m²	622 sqft

S - Storage SC - Services Cupboard WD - Washer Dryer FF - Fridge Freezer
HO - Hob & Oven DW - Dishwasher FW - Fitted Wardrobe

ONE BEDROOM
APARTMENT



Second Floor

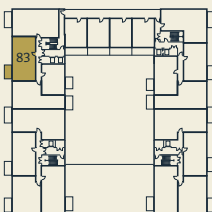


APARTMENT 34

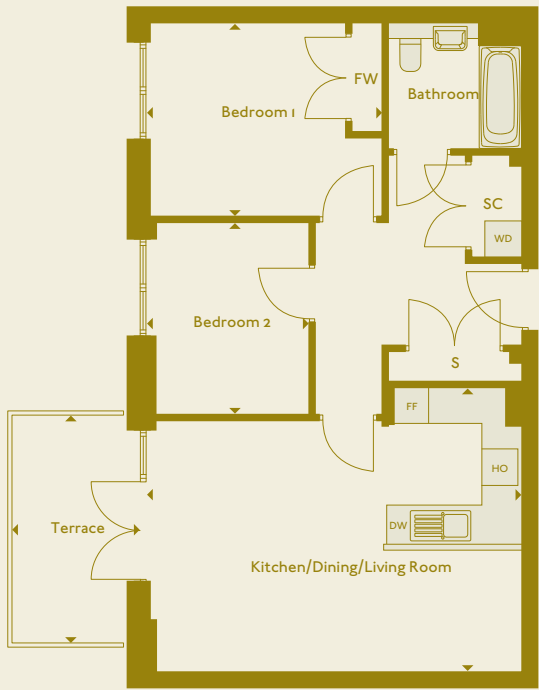
Kitchen/Dining/Living Room	6.19m x 5.62m	20'4" x 18'5"
Bedroom	3.89m x 3.77m	12'9" x 12'5"
Terrace	3.11m x 2.11m	10'2" x 6'11"
Gross internal area	57.8 m ²	622 sqft

S - Storage SC - Services Cupboard WD - Washer Dryer FF - Fridge Freezer
HO - Hob & Oven DW - Dishwasher FW - Fitted Wardrobe

TWO BEDROOM
APARTMENT



Fourth Floor

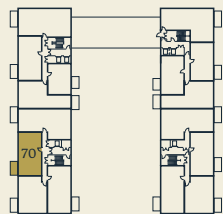


APARTMENT 83

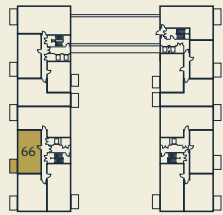
Kitchen/Dining/Living Room	6.20m x 4.69m	20'4" x 15'5"
Bedroom 1	3.90m x 3.20m	12'10" x 10'6"
Bedroom 2	3.17m x 2.68m	10'5" x 8'10"
Terrace	3.77m x 2.12m	12'4" x 6'11"
Gross internal area	65.2 m ²	702 sqft

S - Storage SC - Services Cupboard WD - Washer Dryer FF - Fridge Freezer
HO - Hob & Oven DW - Dishwasher FW - Fitted Wardrobe

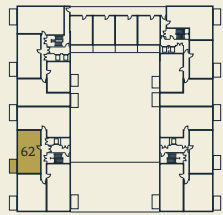
TWO BEDROOM
APARTMENT



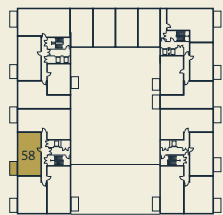
Sixth Floor



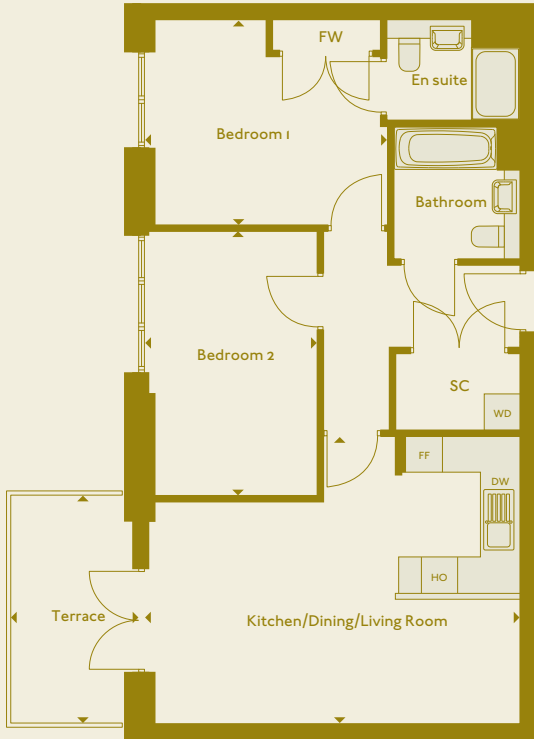
Fifth Floor



Fourth Floor



Third Floor

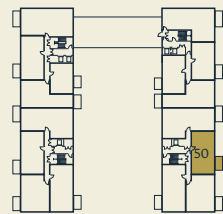


▲
APARTMENTS 58, 62, 66 & 70

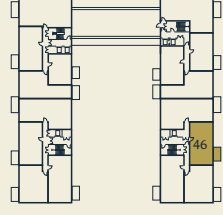
Kitchen/Dining/Living Room	6.20m x 4.75m	20'4" x 15'7"
Bedroom 1	4.03m x 3.31m	13'3" x 10'10"
Bedroom 2	4.37m x 2.85m	14'4" x 9'4"
Terrace	3.77m x 2.11m	12'4" x 6'11"
Gross internal area	70.8 m ²	762 sqft

S - Storage SC - Services Cupboard WD - Washer Dryer FF - Fridge Freezer
HO - Hob & Oven DW - Dishwasher FW - Fitted Wardrobe

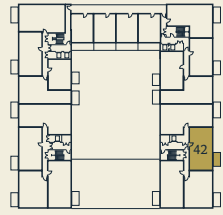
TWO BEDROOM
APARTMENT



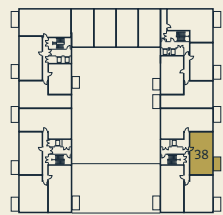
Sixth Floor



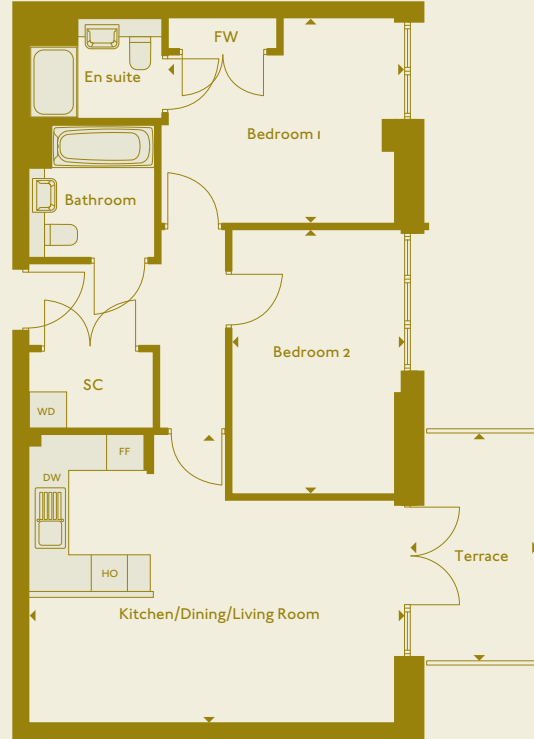
Fifth Floor



Fourth Floor



Third Floor

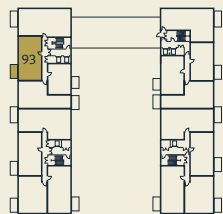


▲
APARTMENTS 38, 42, 46 & 50

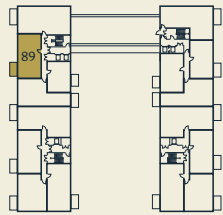
Kitchen/Dining/Living Room	6.20m x 4.75m	20'4" x 15'7"
Bedroom 1	3.90m x 3.31m	12'10" x 10'10"
Bedroom 2	4.37m x 2.85m	14'4" x 9'4"
Terrace	3.77m x 2.11m	12'4" x 6'11"
Gross internal area	70.8 m ²	762 sqft

S - Storage SC - Services Cupboard WD - Washer Dryer FF - Fridge Freezer
HO - Hob & Oven DW - Dishwasher FW - Fitted Wardrobe

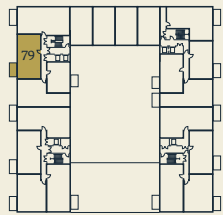
TWO BEDROOM
APARTMENT



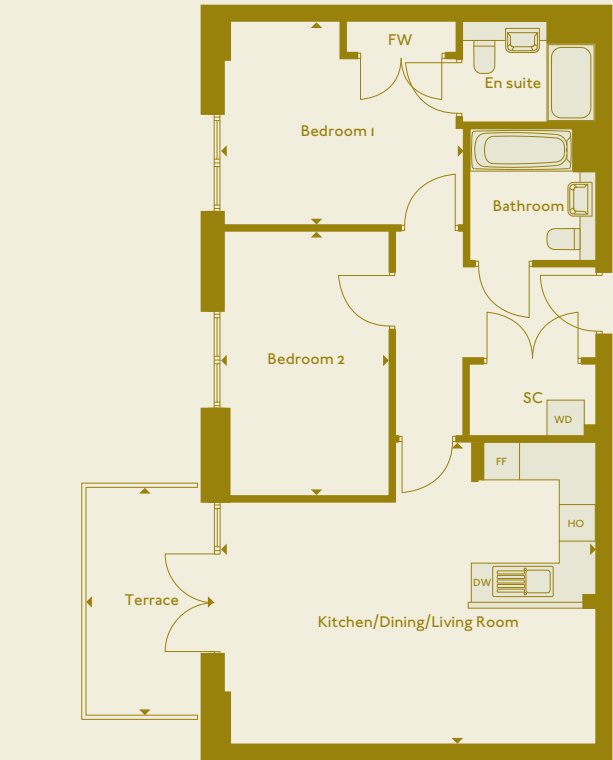
Sixth Floor



Fifth Floor



Third Floor

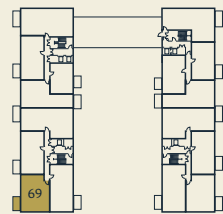


▲
APARTMENTS 79, 89 & 93

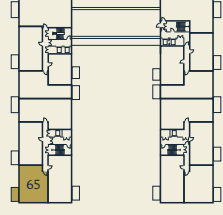
Kitchen/Dining/Living Room	6.20m x 4.97m	20'4" x 16'4"
Bedroom 1	4.03m x 3.35m	13'3" x 11'0"
Bedroom 2	4.38m x 2.79m	14'4" x 9'2"
Terrace	3.77m x 2.12m	12'4" x 6'11"
Gross internal area	72.9 m²	785 sqft

S - Storage SC - Services Cupboard WD - Washer Dryer FF - Fridge Freezer
HO - Hob & Oven DW - Dishwasher FW - Fitted Wardrobe

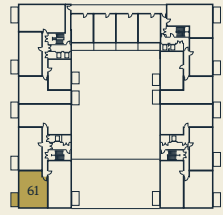
TWO BEDROOM
APARTMENT



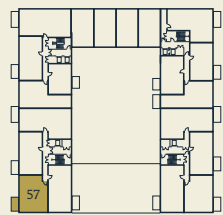
Sixth Floor



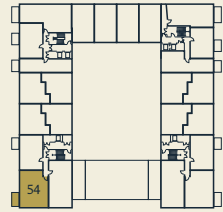
Fifth Floor



Fourth Floor



Third Floor



Second Floor

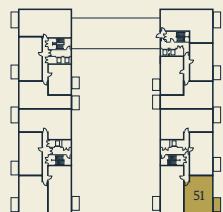


▲
APARTMENTS 54, 57, 61, 65 & 69

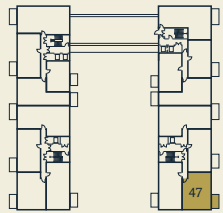
Kitchen/Dining/Living Room	7.78m x 3.47m	25'6" x 11'5"
Bedroom 1	4.18m x 3.64m	13'8" x 11'11"
Bedroom 2	4.18m x 3.35m	13'8" x 11'0"
Terrace	3.77m x 2.11m	12'4" x 6'11"
Gross internal area	73.9 m²	795 sqft

S - Storage SC - Services Cupboard WD - Washer Dryer FF - Fridge Freezer
HO - Hob & Oven DW - Dishwasher FW - Fitted Wardrobe

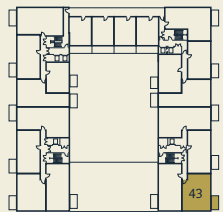
TWO BEDROOM
APARTMENT



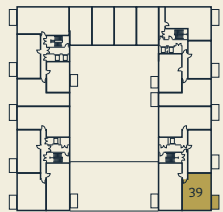
Sixth Floor



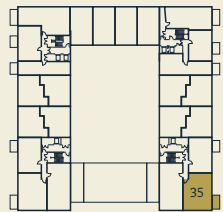
Fifth Floor



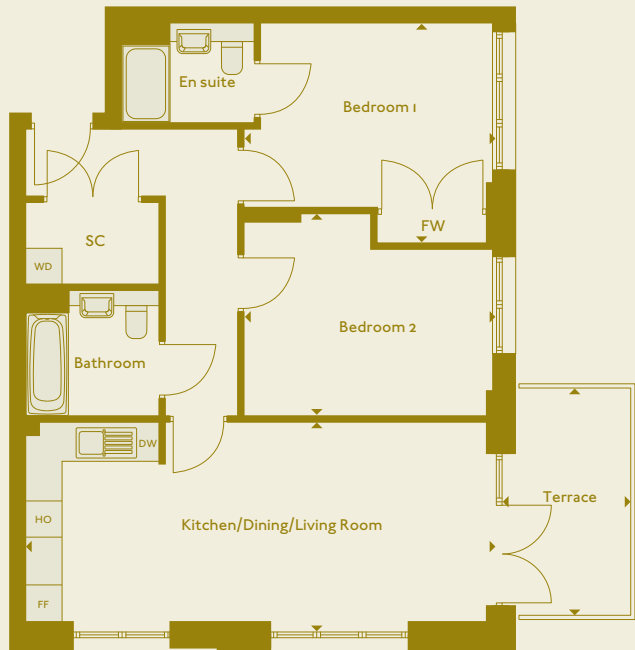
Fourth Floor



Third Floor



Second Floor

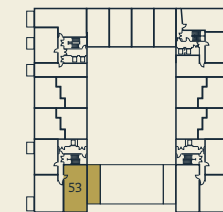


APARTMENTS 35, 39, 43, 47 & 51

Kitchen/Dining/Living Room	7.78m x 3.47m	25'6" x 11'5"
Bedroom 1	4.18m x 3.64m	13'8" x 11'11"
Bedroom 2	4.18m x 3.35m	13'8" x 11'0"
Terrace	3.77m x 2.11m	12'4" x 6'11"
Gross internal area	73.9 m ²	795 sqft

SC - Services Cupboard WD - Washer Dryer FF - Fridge Freezer
HO - Hob & Oven DW - Dishwasher FW - Fitted Wardrobe

TWO BEDROOM
APARTMENT



Second Floor

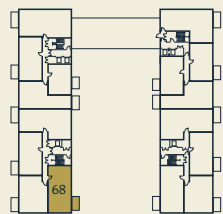


APARTMENT 53

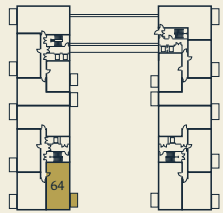
Kitchen/Dining/Living Room	6.19m x 5.08m	20'4" x 16'8"
Bedroom 1	3.89m x 3.73m	12'9" x 12'3"
Bedroom 2	4.43m x 2.85m	14'6" x 9'4"
Terrace	10.49m x 3.47m	34'5" x 11'5"
Gross internal area	78.4 m ²	844 sqft

S - Storage SC - Services Cupboard WD - Washer Dryer FF - Fridge Freezer
HO - Hob & Oven DW - Dishwasher FW - Fitted Wardrobe

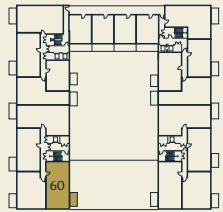
TWO BEDROOM
APARTMENT



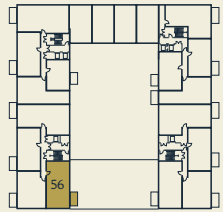
Sixth Floor



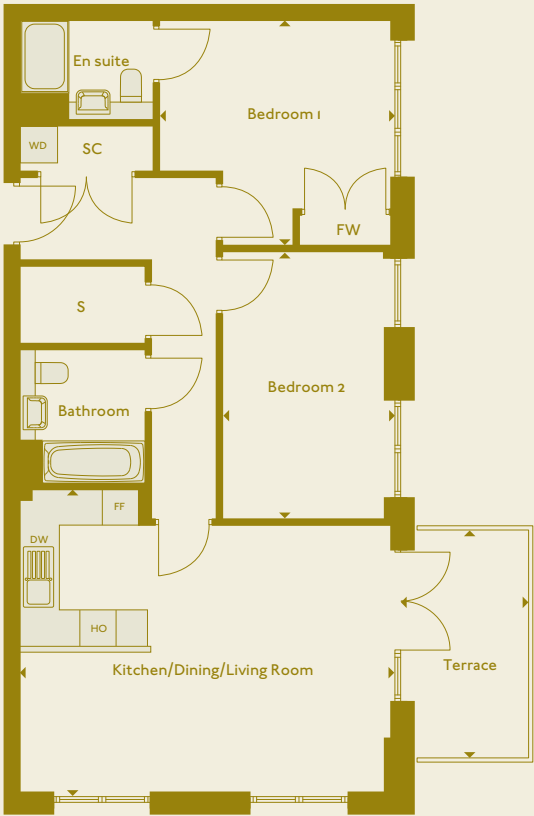
Fifth Floor



Fourth Floor



Third Floor

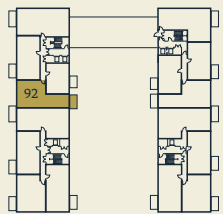


APARTMENTS 56, 60, 64 & 68

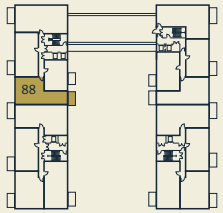
Kitchen/Dining/Living Room	6.19m x 5.08m	20'4" x 16'8"
Bedroom 1	3.89m x 3.72m	12'9" x 12'2"
Bedroom 2	4.43m x 2.85m	14'6" x 9'4"
Terrace	3.77m x 2.11m	12'4" x 6'11"
Gross internal area	78.4 m²	844 sqft

S - Storage SC - Services Cupboard WD - Washer Dryer FF - Fridge Freezer
HO - Hob & Oven DW - Dishwasher FW - Fitted Wardrobe

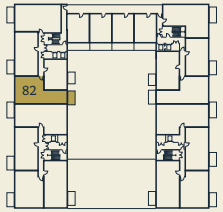
TWO BEDROOM
APARTMENT



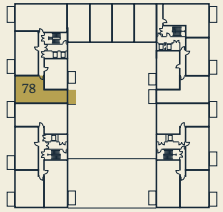
Sixth Floor



Fifth Floor



Fourth Floor



Third Floor

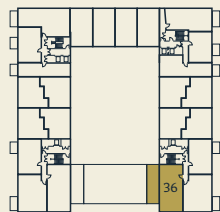


APARTMENTS 78, 82, 88 & 92

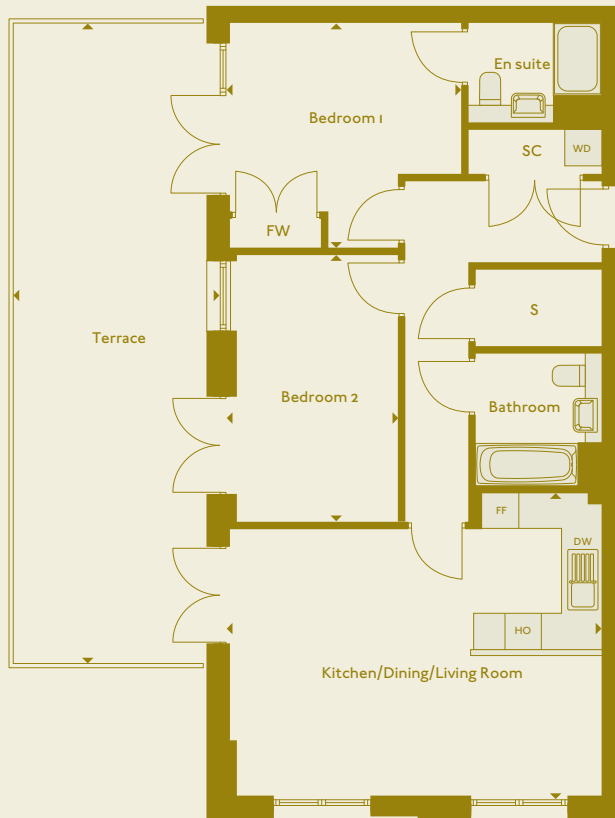
Kitchen/Dining/Living Room	7.91m x 3.48m	26'0" x 11'5"
Bedroom 1	4.54m x 3.35m	14'11" x 11'0"
Bedroom 2	3.88m x 3.32m	12'9" x 10'11"
Terrace	3.77m x 2.12m	12'4" x 6'11"
Gross internal area	78.4 m²	844 sqft

S - Storage SC - Services Cupboard WD - Washer Dryer FF - Fridge Freezer
HO - Hob & Oven DW - Dishwasher FW - Fitted Wardrobe

TWO BEDROOM
APARTMENT



Second Floor

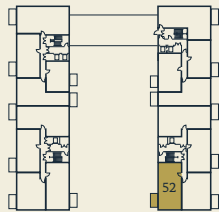


APARTMENT 36

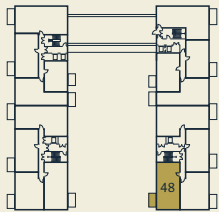
Kitchen/Dining/Living Room	6.19m x 5.08m	20'4" x 16'8"
Bedroom 1	3.89m x 3.73m	12'9" x 12'3"
Bedroom 2	4.43m x 2.85m	14'6" x 9'4"
Terrace	10.60m x 3.43m	34'9" x 11'3"
Gross internal area	78.4 m ²	844 sqft

S - Storage SC - Services Cupboard WD - Washer Dryer FF - Fridge Freezer
HO - Hob & Oven DW - Dishwasher FW - Fitted Wardrobe

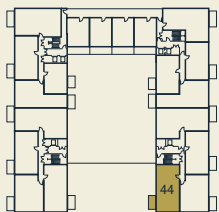
TWO BEDROOM
APARTMENT



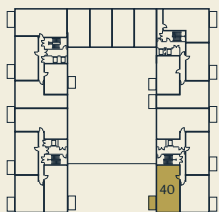
Sixth Floor



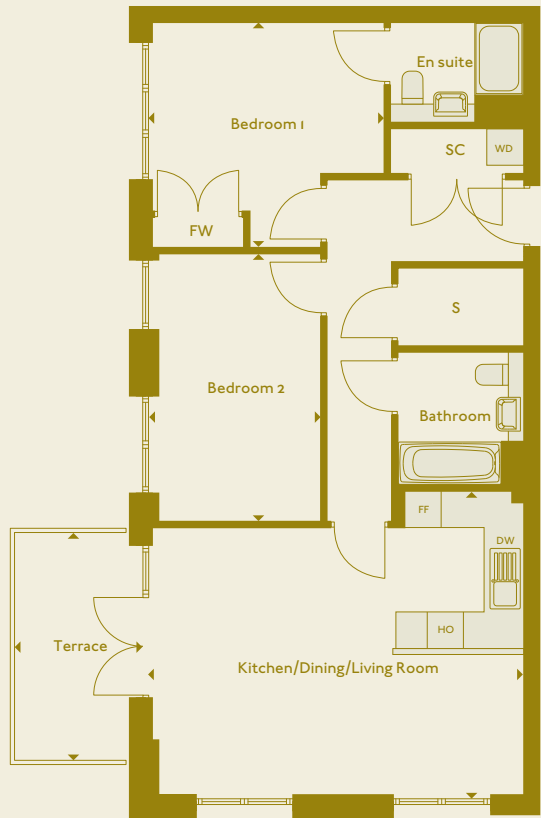
Fifth Floor



Fourth Floor



Third Floor

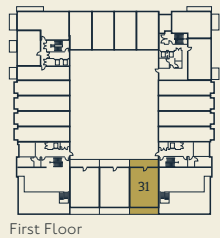


APARTMENTS 40, 44, 48 & 52

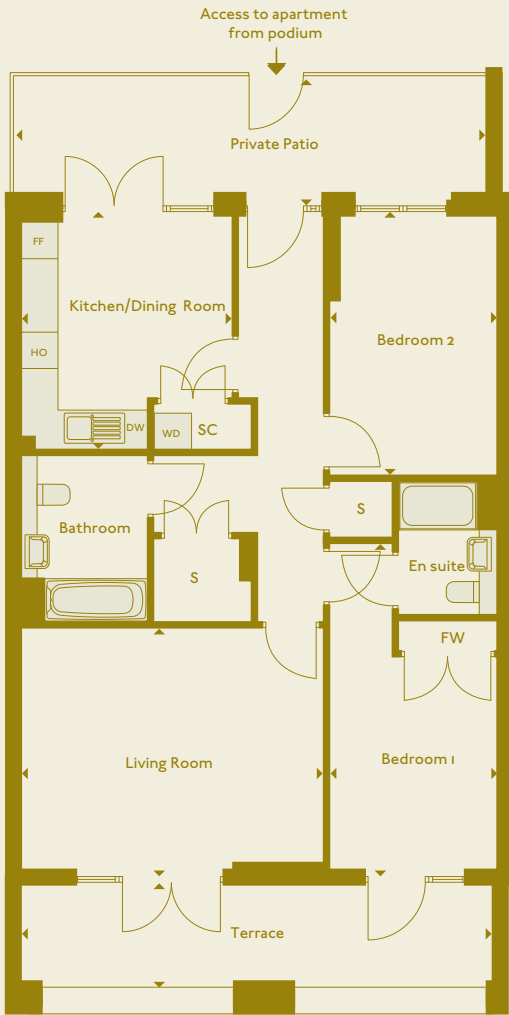
Kitchen/Dining/Living Room	6.19m x 5.08m	20'4" x 16'8"
Bedroom 1	3.89m x 3.72m	12'9" x 12'2"
Bedroom 2	4.43m x 2.85m	14'6" x 9'4"
Terrace	3.77m x 2.11m	12'4" x 6'11"
Gross internal area	78.4 m ²	844 sqft

S - Storage SC - Services Cupboard WD - Washer Dryer FF - Fridge Freezer
HO - Hob & Oven DW - Dishwasher FW - Fitted Wardrobe

TWO BEDROOM
APARTMENT



First Floor

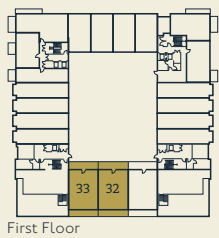


APARTMENT 31

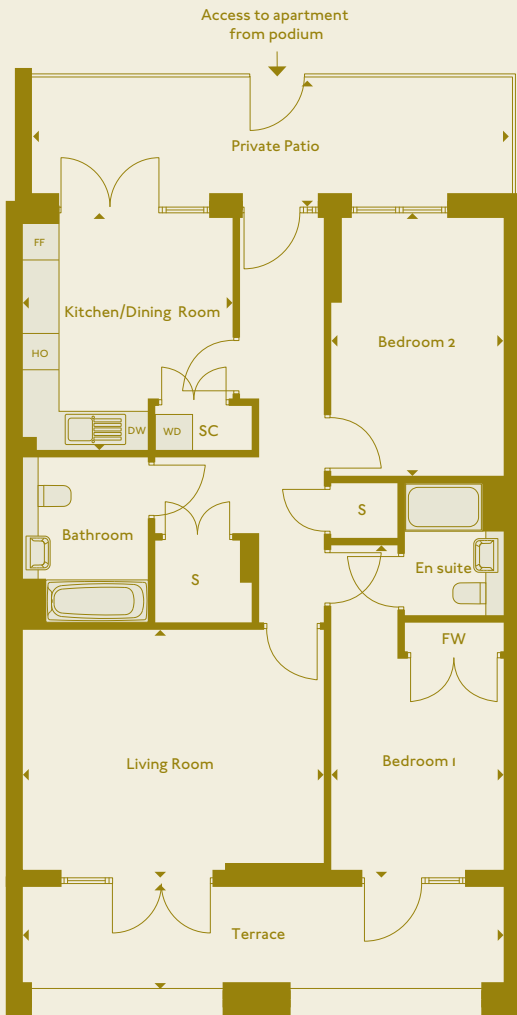
Kitchen/Dining Room	3.93m x 3.48m	12'11" x 11'5"
Living Room	4.99m x 4.08m	16'4" x 13'5"
Bedroom 1	5.51m x 2.78m	18'1" x 9'1"
Bedroom 2	4.36m x 2.78m	14'4" x 9'1"
Terrace	7.79m x 1.74m	25'6" x 5'8"
Private Patio	7.75m x 2.15m	25'5" x 7'1"
Gross internal area	85.1 m ²	916 sqft

S - Storage SC - Services Cupboard WD - Washer Dryer FF - Fridge Freezer
HO - Hob & Oven DW - Dishwasher FW - Fitted Wardrobe

TWO BEDROOM
APARTMENT



First Floor

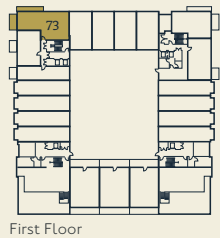


APARTMENTS 32 & 33

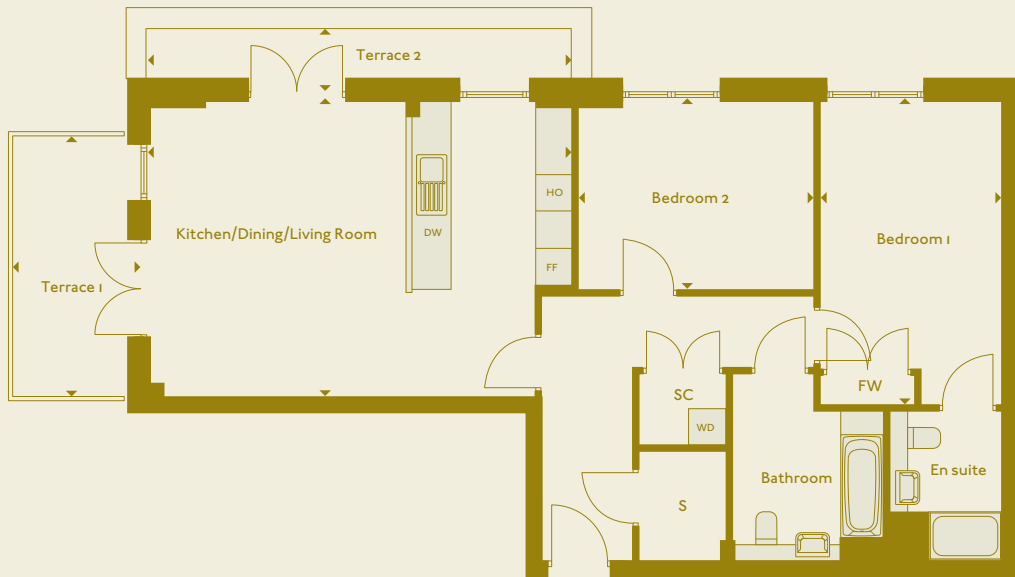
Kitchen/Dining Room	3.93m x 3.48m	12'11" x 11'5"
Living Room	4.99m x 4.11m	16'4" x 13'6"
Bedroom 1	5.51m x 2.86m	18'1" x 9'5"
Bedroom 2	4.36m x 2.86m	14'4" x 9'5"
Terrace	7.95m x 1.74m	26'1" x 5'8"
Private Patio	7.89m x 2.10m	25'11" x 6'11"
Gross internal area	86.3 m ²	929 sqft

S - Storage SC - Services Cupboard WD - Washer Dryer FF - Fridge Freezer
HO - Hob & Oven DW - Dishwasher FW - Fitted Wardrobe

TWO BEDROOM
APARTMENT



First Floor

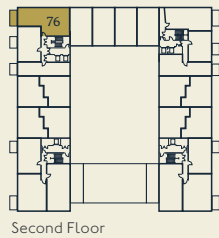


▲
APARTMENT 73

Kitchen/Dining/Living Room	7.03m x 4.94m	23'1" x 16'2"
Bedroom 1	5.09m x 3.00m	16'8" x 9'10"
Bedroom 2	3.90m x 3.18m	12'9" x 10'5"
Terrace 1	4.31m x 2.12m	14'2" x 6'11"
Terrace 2	7.02m x 1.04m	23'0" x 3'5"
Gross internal area	88.9 m²	957 sqft

S - Storage SC - Services Cupboard WD - Washer Dryer FF - Fridge Freezer
HO - Hob & Oven DW - Dishwasher FW - Fitted Wardrobe

TWO BEDROOM
APARTMENT



Second Floor

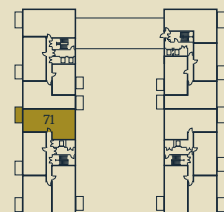


▲
APARTMENT 76

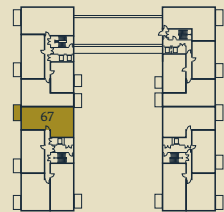
Kitchen/Dining/Living Room	7.03m x 4.94m	23'1" x 16'2"
Bedroom 1	5.09m x 3.00m	16'8" x 9'10"
Bedroom 2	3.90m x 3.18m	12'9" x 10'5"
Terrace	4.31m x 2.12m	14'2" x 6'11"
Gross internal area	88.9 m²	957 sqft

S - Storage SC - Services Cupboard WD - Washer Dryer FF - Fridge Freezer
HO - Hob & Oven DW - Dishwasher FW - Fitted Wardrobe

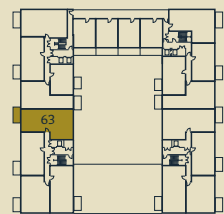
THREE
BEDROOM
APARTMENT



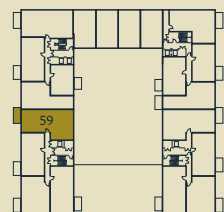
Sixth Floor



Fifth Floor



Fourth Floor



Third Floor



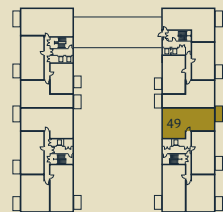
▲
APARTMENTS 59, 63, 67 & 71

Kitchen/Dining Room	6.08m x 3.20m	19'11" x 10'6"
Living Room	5.72m x 3.20m	18'9" x 10'6"
Bedroom 1	5.88m x 3.06m	19'3" x 10'1"
Bedroom 2	4.48m x 2.78m	14'9" x 9'2"
Bedroom 3	4.66m x 2.16m	15'4" x 7'1"
Terrace	4.31m x 2.12m	14'2" x 6'11"
Gross internal area	98.4 m ²	1059 sqft

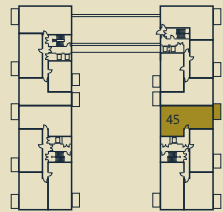
S - Storage SC - Services Cupboard WD - Washer Dryer FF - Fridge Freezer
HO - Hob & Oven DW - Dishwasher FW - Fitted Wardrobe



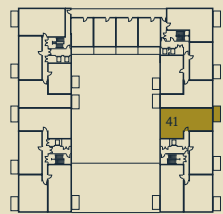
THREE
BEDROOM
APARTMENT



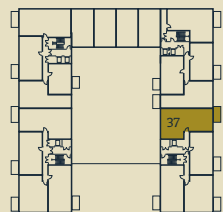
Sixth Floor



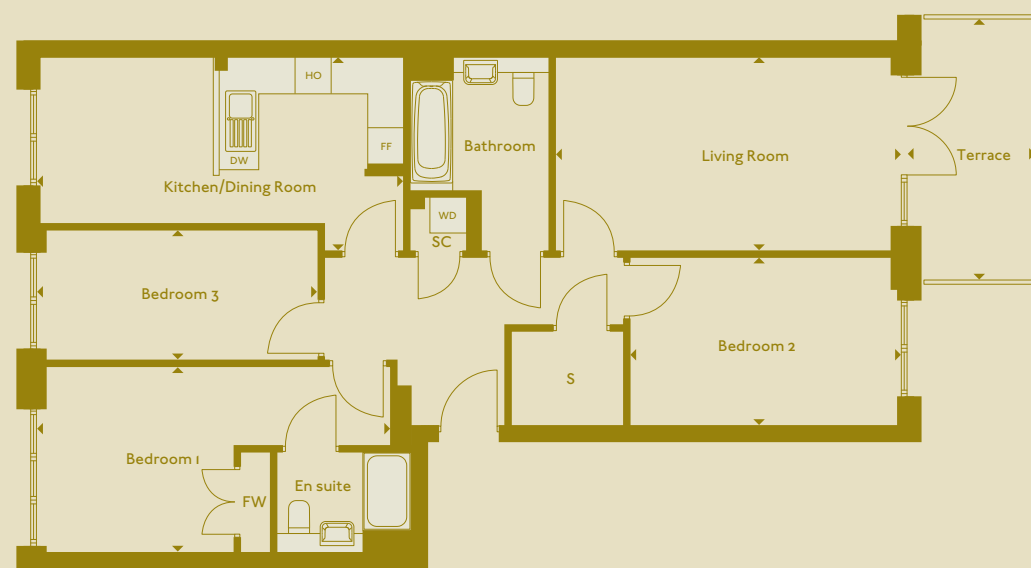
Fifth Floor



Fourth Floor



Third Floor



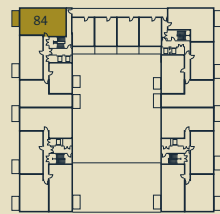
▲
APARTMENTS 37, 41, 45 & 49

Kitchen/Dining Room	6.08m x 3.20m	19'11" x 10'6"
Living Room	5.72m x 3.20m	18'9" x 10'6"
Bedroom 1	5.88m x 3.06m	19'3" x 10'1"
Bedroom 2	4.48m x 2.78m	14'9" x 9'2"
Bedroom 3	4.66m x 2.16m	15'4" x 7'1"
Terrace	4.31m x 2.12m	14'2" x 6'11"
Gross internal area	98.4 m ²	1059 sqft

S - Storage SC - Services Cupboard WD - Washer Dryer FF - Fridge Freezer
HO - Hob & Oven DW - Dishwasher FW - Fitted Wardrobe



THREE
BEDROOM
APARTMENT



Fourth Floor

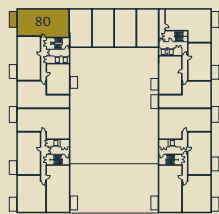


▲
APARTMENT 84

Kitchen/Dining Room	4.28m x 3.47m	14'1" x 11'5"
Living Room	4.98m x 3.72m	16'4" x 12'3"
Bedroom 1	5.05m x 2.80m	16'7" x 9'2"
Bedroom 2	3.68m x 3.45m	12'1" x 11'4"
Bedroom 3	3.68m x 2.27m	12'1" x 7'6"
Terrace	4.31m x 2.12m	14'2" x 6'11"
Gross internal area	98.5 m ²	1060 sqft

S - Storage SC - Services Cupboard WD - Washer Dryer FF - Fridge Freezer
HO - Hob & Oven DW - Dishwasher FW - Fitted Wardrobe

THREE
BEDROOM
APARTMENT



Third Floor

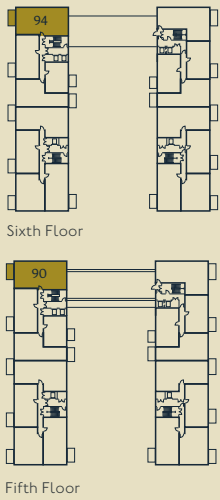


▲
APARTMENT 80

Kitchen/Dining Room	4.48m x 3.47m	14'8" x 11'5"
Living Room	4.64m x 3.68m	15'3" x 12'1"
Bedroom 1	5.05m x 4.31m	16'7" x 14'2"
Bedroom 2	3.68m x 3.45m	12'1" x 11'4"
Bedroom 3	3.68m x 2.58m	12'1" x 8'6"
Terrace	4.31m x 2.12m	14'2" x 6'11"
Gross internal area	103.5 m ²	1114 sqft

S - Storage SC - Services Cupboard WD - Washer Dryer FF - Fridge Freezer
HO - Hob & Oven DW - Dishwasher FW - Fitted Wardrobe

THREE
BEDROOM
APARTMENT

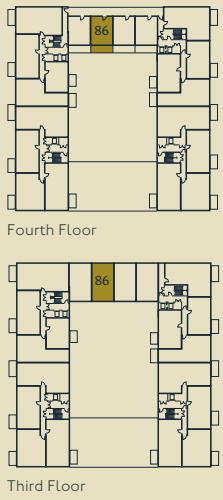


▲
APARTMENTS 90 & 94

Kitchen/Dining Room	4.48m x 3.47m	14'8" x 11'5"
Living Room	4.64m x 3.68m	15'3" x 12'1"
Bedroom 1	5.05m x 4.48m	16'7" x 14'9"
Bedroom 2	3.68m x 3.45m	12'1" x 11'4"
Bedroom 3	3.68m x 2.58m	12'1" x 8'6"
Terrace	4.31m x 2.12m	14'2" x 6'11"
Gross internal area	103.5 m ²	1114 sqft

S - Storage SC - Services Cupboard WD - Washer Dryer FF - Fridge Freezer
HO - Hob & Oven DW - Dishwasher FW - Fitted Wardrobe

THREE
BEDROOM
DUPLEX
APARTMENT

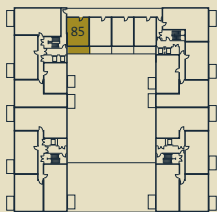


▲
APARTMENT 86

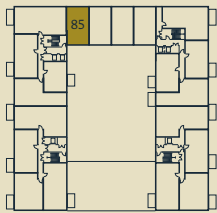
Kitchen/Dining Room	4.41m x 2.97m	14'6" x 9'9"
Living Room	5.79m x 3.27m	19'0" x 10'9"
Bedroom 1	5.79m x 3.53m	19'0" x 11'7"
Bedroom 2	3.52m x 3.47m	11'7" x 11'5"
Bedroom 3	3.77m x 2.23m	12'4" x 7'4"
Terrace	6.03m x 2.12m	19'9" x 6'11"
Gross Internal area	103.9 m ²	1118 sqft

S - Storage SC - Services Cupboard WD - Washer Dryer FF - Fridge Freezer
HO - Hob & Oven DW - Dishwasher FW - Fitted Wardrobe

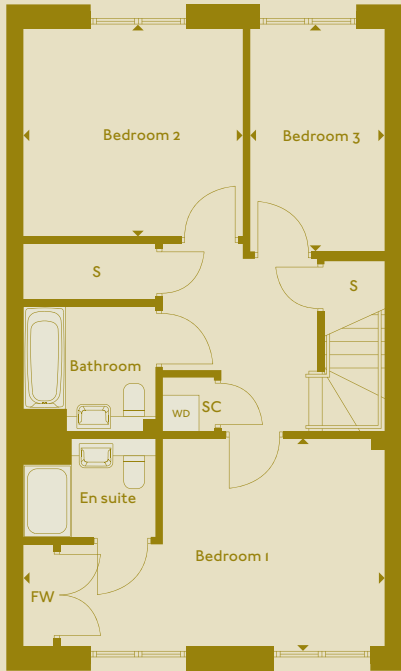
THREE
BEDROOM
DUPLEX
APARTMENT



Fourth Floor



Third Floor



Third Floor



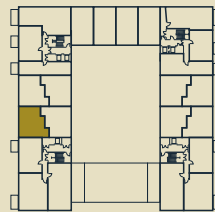
Fourth Floor

APARTMENT 85

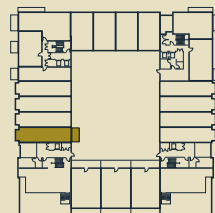
Kitchen/Dining Room	4.41m x 2.97m	14'6" x 9'9"
Living Room	5.79m x 3.27m	19'0" x 10'9"
Bedroom 1	5.97m x 3.53m	19'7" x 11'7"
Bedroom 2	3.64m x 3.52m	11'11" x 11'7"
Bedroom 3	3.77m x 2.16m	12'4" x 7'1"
Terrace	6.17m x 2.12m	20'3" x 6'11"
Gross internal area	105.6 m ²	1137 sqft

S - Storage SC - Services Cupboard WD - Washer Dryer FF - Fridge Freezer
HO - Hob & Oven DW - Dishwasher FW - Fitted Wardrobe

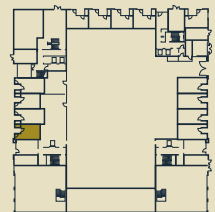
THREE
BEDROOM
TRIPLEX
APARTMENT



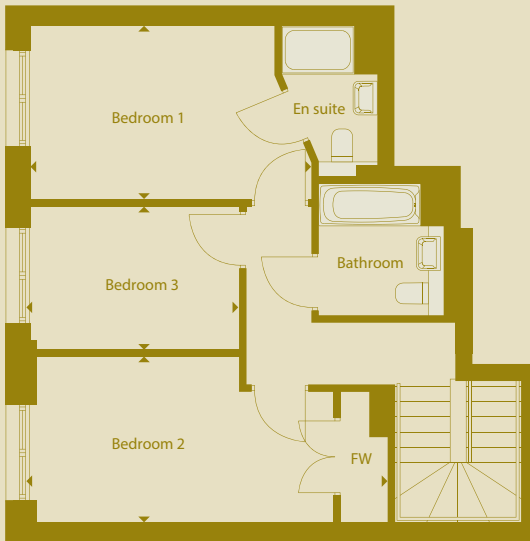
Second Floor



First Floor



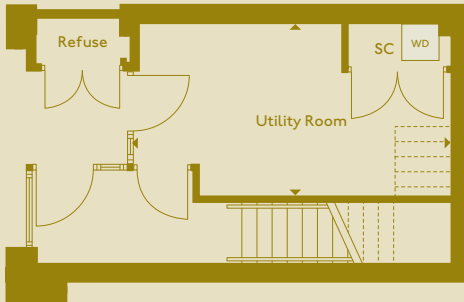
Ground Floor



Second Floor



First Floor



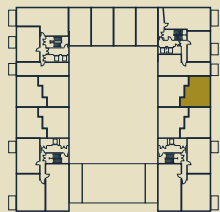
Ground Floor

II HUDSON WAY

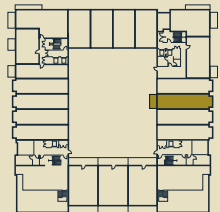
Kitchen/Dining Room	6.91m x 3.95m	22'8" x 12'11"	Bedroom 3	3.54m x 2.39m	11'7" x 7'10"
Living Room	4.40m x 3.95m	14'5" x 12'11"	Utility Room	5.23m x 2.84m	17'2" x 9'4"
Bedroom 1	4.67m x 2.84m	15'4" x 9'4"	Patio	4.07m x 3.93m	13'4" x 12'11"
Bedroom 2	6.00m x 2.75m	19'8" x 9'0"	Gross internal area	137.7 m ²	1482 sqft

S - Storage SC - Services Cupboard WD - Washer Dryer FF - Fridge Freezer
HO - Hob & Oven DW - Dishwasher FW - Fitted Wardrobe

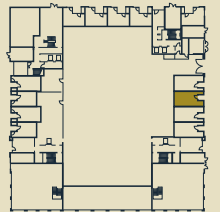
THREE
BEDROOM
TRIPLEX
APARTMENT



Second Floor



First Floor



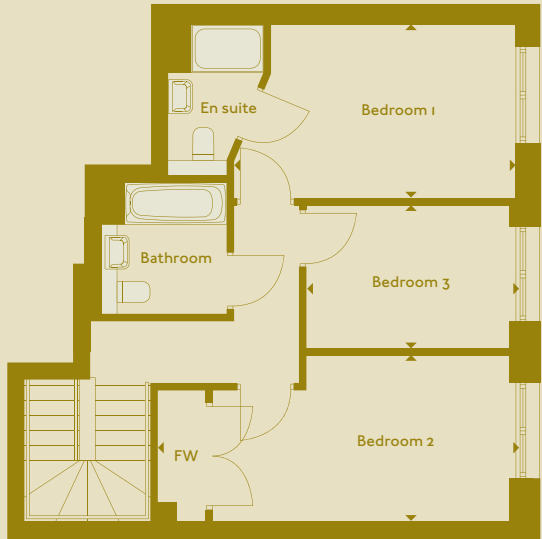
Ground Floor



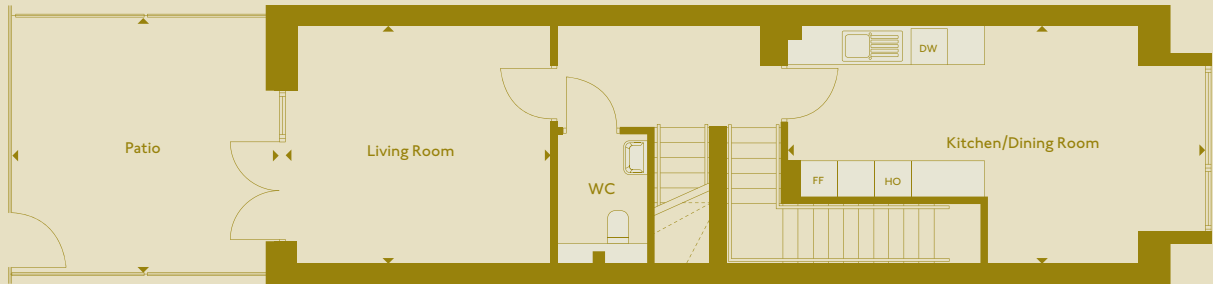
4 FROBISHER YARD

Kitchen/Dining Room	6.91m x 3.94m	22'8" x 12'11"	Bedroom 3	3.54m x 2.39m	11'7" x 7'10"
Living Room	4.40m x 3.95m	14'5" x 12'11"	Utility Room	6.42m x 2.85m	21'1" x 9'4"
Bedroom 1	4.67m x 2.88m	15'4" x 9'6"	Patio	4.42m x 4.23m	14'6" x 13'10"
Bedroom 2	6.00m x 2.75m	19'8" x 9'0"	Gross internal area	142.6 m²	1535 sqft

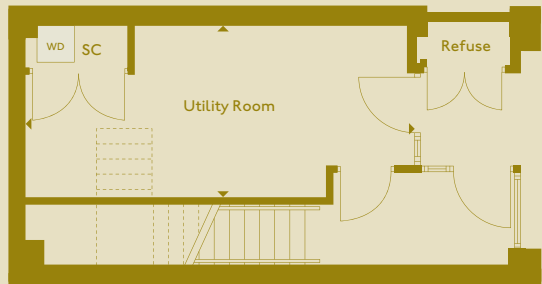
S - Storage SC - Services Cupboard WD - Washer Dryer FF - Fridge Freezer
HO - Hob & Oven DW - Dishwasher FW - Fitted Wardrobe



Second Floor



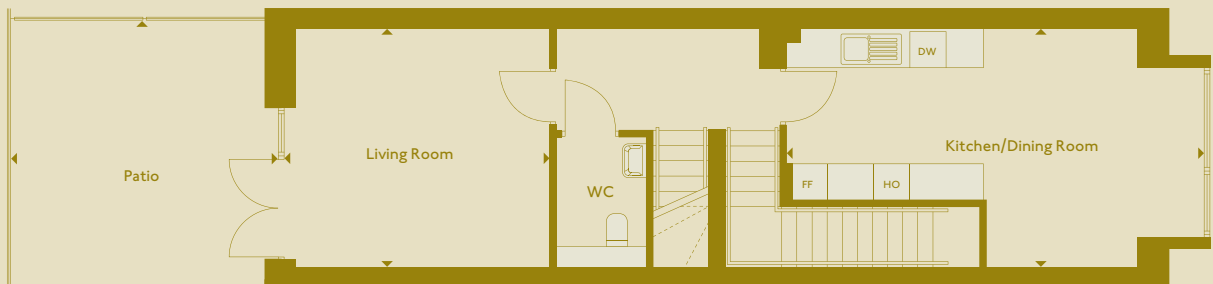
First Floor



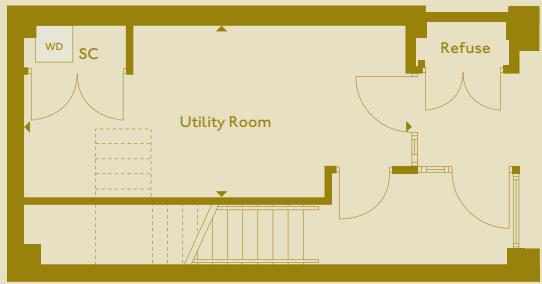
Ground Floor



Second Floor



First Floor



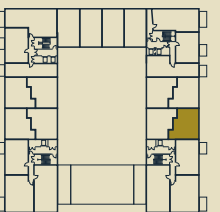
Ground Floor

8 FROBISHER YARD

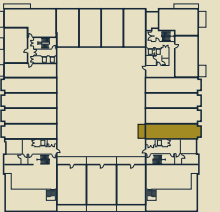
Kitchen/Dining Room	6.91m x 3.94m	22'8" x 12'11"	Bedroom 3	3.54m x 2.39m	11'7" x 7'10"
Living Room	4.40m x 3.95m	14'5" x 12'11"	Utility Room	6.42m x 2.85m	21'1" x 9'4"
Bedroom 1	4.67m x 2.88m	15'4" x 9'6"	Patio	4.42m x 5.37m	14'6" x 17'7"
Bedroom 2	6.00m x 2.75m	19'8" x 9'0"	Gross internal area	142.6 m²	1535 sqft

S - Storage SC - Services Cupboard WD - Washer Dryer FF - Fridge Freezer
HO - Hob & Oven DW - Dishwasher FW - Fitted Wardrobe

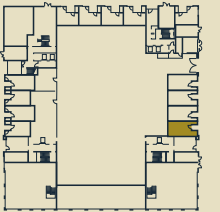
THREE
BEDROOM
TRIPLEX
APARTMENT



Second Floor



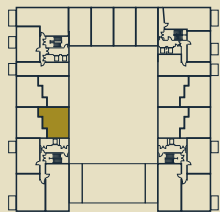
First Floor



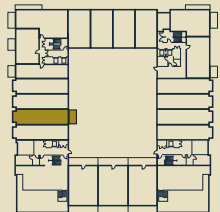
Ground Floor



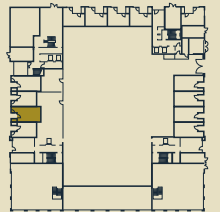
THREE
BEDROOM
TRIPLEX
APARTMENT



Second Floor



First Floor



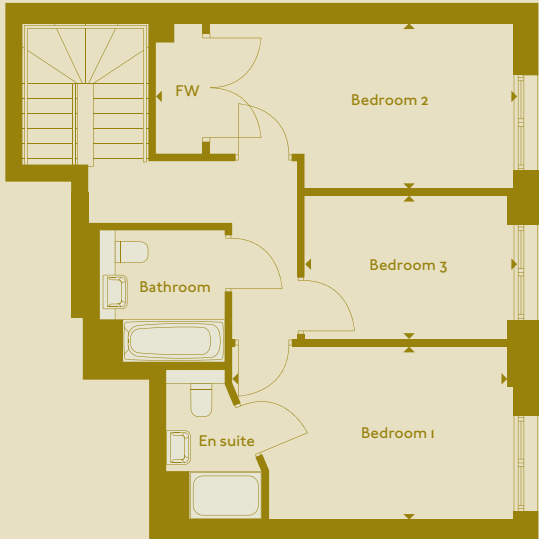
Ground Floor



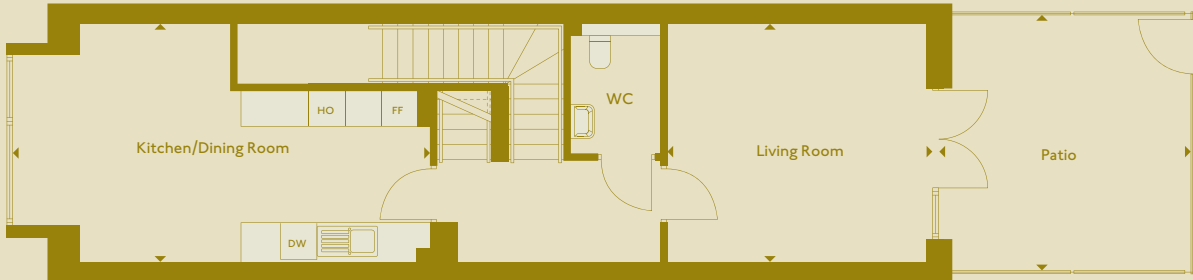
9 HUDSON WAY

Kitchen/Dining Room	6.91m x 3.95m	22'8" x 12'11"	Bedroom 3	3.54m x 2.39m	11'7" x 7'10"
Living Room	4.40m x 3.94m	14'5" x 12'11"	Utility Room	6.43m x 2.84m	21'1" x 9'4"
Bedroom 1	4.56m x 2.88m	15'0" x 9'6"	Patio	4.18m x 4.23m	13'8" x 13'10"
Bedroom 2	6.00m x 2.75m	19'8" x 9'0"	Gross internal area	142.9 m ²	1538 sqft

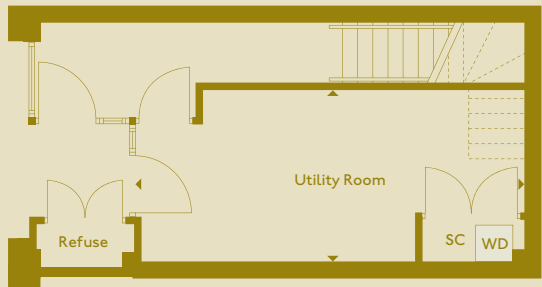
S - Storage SC - Services Cupboard WD - Washer Dryer FF - Fridge Freezer
HO - Hob & Oven DW - Dishwasher FW - Fitted Wardrobe



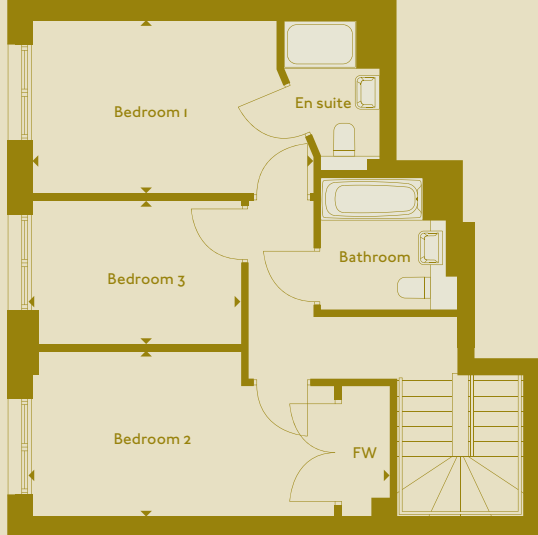
Second Floor



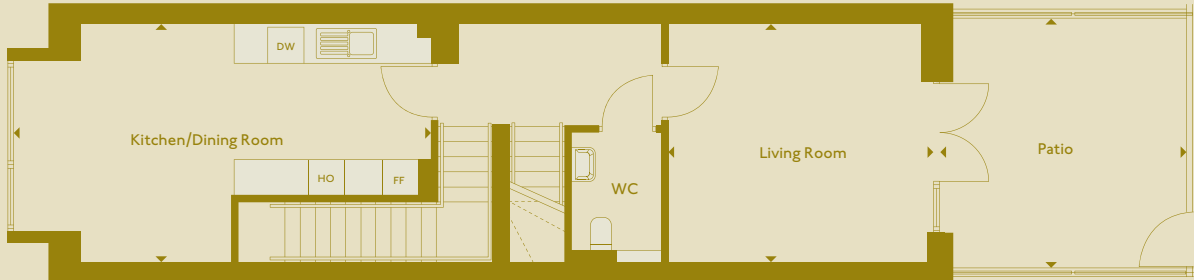
First Floor



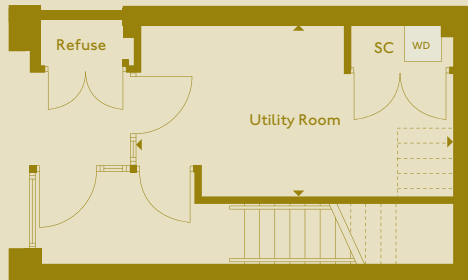
Ground Floor



Second Floor



First Floor



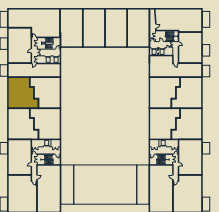
Ground Floor

7 HUDSON WAY

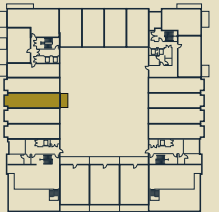
Kitchen/Dining Room	6.91m x 3.95m	22'8" x 12'11"	Bedroom 3	3.54m x 2.39m	11'7" x 7'10"
Living Room	4.40m x 3.94m	14'5" x 12'11"	Utility Room	5.23m x 2.84m	17'2" x 9'4"
Bedroom 1	4.67m x 2.88m	15'4" x 9'6"	Patio	4.07m x 4.13m	13'4" x 13'6"
Bedroom 2	6.00m x 2.75m	19'8" x 9'0"	Gross internal area	142.9 m ²	1538 sqft

S - Storage SC - Services Cupboard WD - Washer Dryer FF - Fridge Freezer
HO - Hob & Oven DW - Dishwasher FW - Fitted Wardrobe

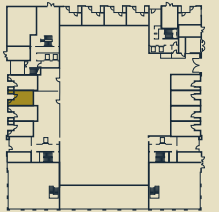
THREE
BEDROOM
TRIPLEX
APARTMENT



Second Floor



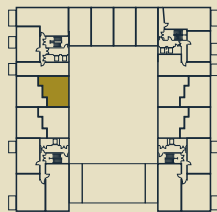
First Floor



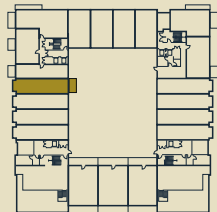
Ground Floor



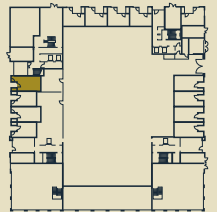
THREE
BEDROOM
TRIPLEX
APARTMENT



Second Floor



First Floor



Ground Floor



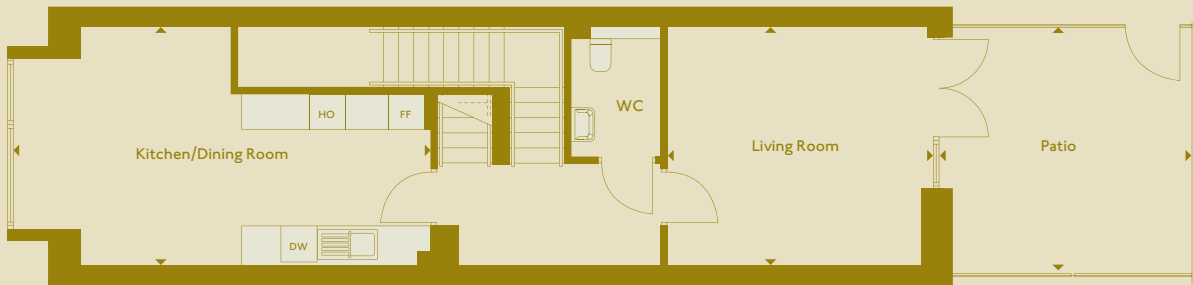
5 HUDSON WAY

Kitchen/Dining Room	6.91m x 3.95m	22'8" x 12'11"	Bedroom 3	3.54m x 2.39m	11'7" x 7'10"
Living Room	4.40m x 3.94m	14'5" x 12'11"	Utility Room	6.43m x 2.84m	21'1" x 9'4"
Bedroom 1	4.56m x 2.88m	15'0" x 9'6"	Patio	4.18m x 4.03m	13'8" x 13'3"
Bedroom 2	6.00m x 2.75m	19'8" x 9'0"	Gross internal area	142.9 m²	1538 sqft

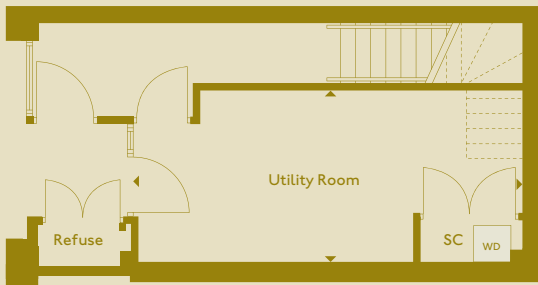
S - Storage SC - Services Cupboard WD - Washer Dryer FF - Fridge Freezer
HO - Hob & Oven DW - Dishwasher FW - Fitted Wardrobe



Second Floor

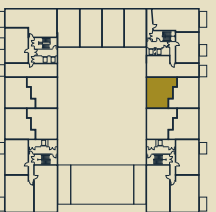


First Floor

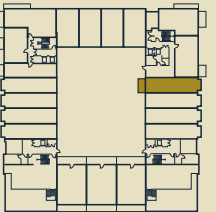


Ground Floor

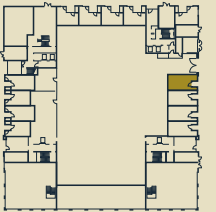
THREE
BEDROOM
TRIPLEX
APARTMENT



Second Floor



First Floor



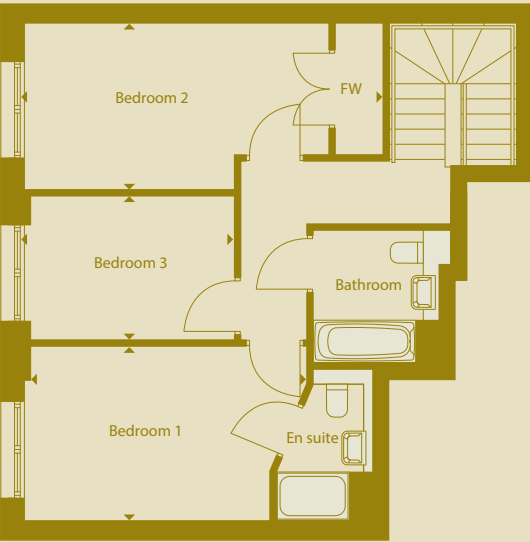
Ground Floor



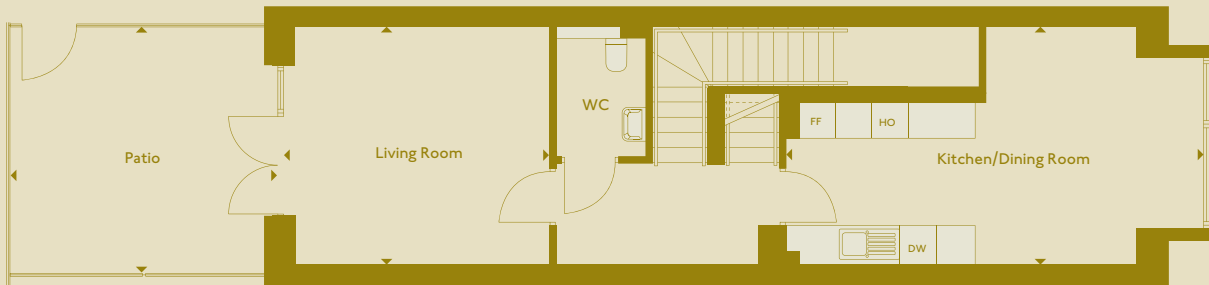
2 FROBISHER YARD

Kitchen/Dining Room	6.91m x 3.95m	22'8" x 12'11"	Bedroom 3	3.54m x 2.39m	11'7" x 7'10"
Living Room	4.40m x 3.95m	14'5" x 12'11"	Utility Room	6.42m x 2.85m	21'1" x 9'4"
Bedroom 1	4.56m x 2.88m	15'0" x 9'6"	Patio	4.42m x 4.08m	14'6" x 13'4"
Bedroom 2	6.00m x 2.75m	19'8" x 9'0"	Gross internal area	142.9 m²	1538 sqft

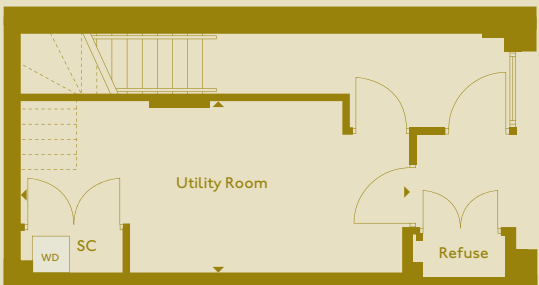
S - Storage SC - Services Cupboard WD - Washer Dryer FF - Fridge Freezer
HO - Hob & Oven DW - Dishwasher FW - Fitted Wardrobe



Second Floor

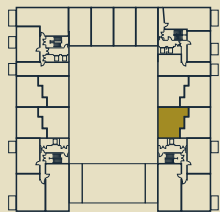


First Floor

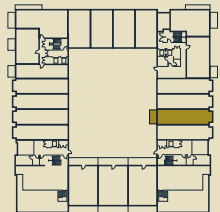


Ground Floor

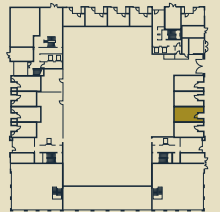
THREE
BEDROOM
TRIPLEX
APARTMENT



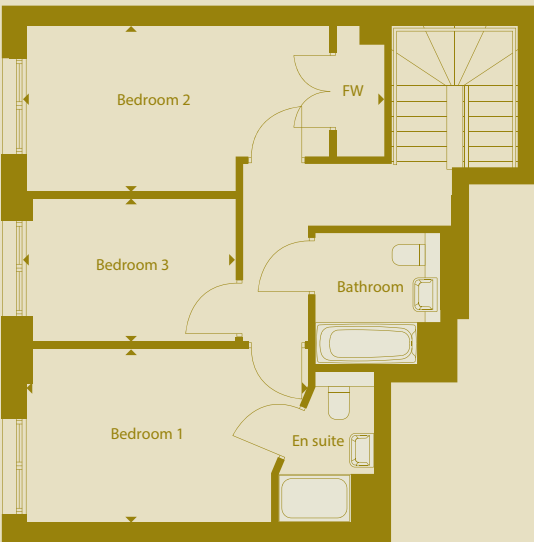
Second Floor



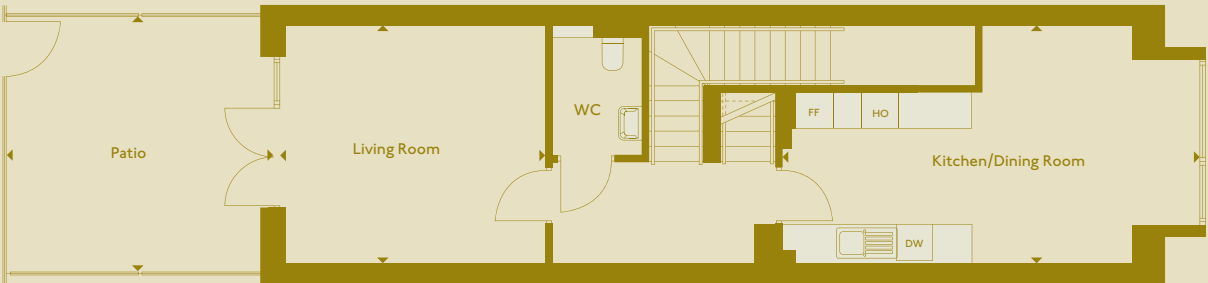
First Floor



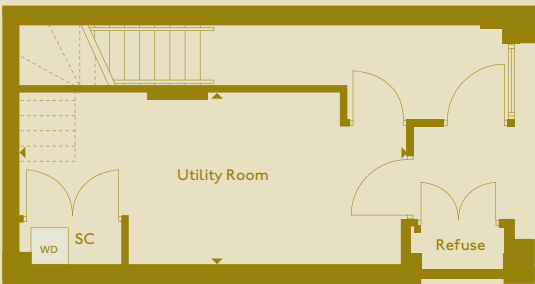
Ground Floor



Second Floor



First Floor



Ground Floor



6 FROBISHER YARD

Kitchen/Dining Room	6.91m x 3.95m	22'8" x 12'11"
Living Room	4.40m x 3.95m	14'5" x 12'11"
Bedroom 1	4.67m x 2.88m	15'4" x 9'6"
Bedroom 2	6.00m x 2.75m	19'8" x 9'0"

Bedroom 3	3.54m x 2.39m	11'7" x 7'10"
Utility Room	6.42m x 2.85m	21'1" x 9'4"
Patio	4.42m x 4.23m	14'6" x 13'10"
Gross internal area	142.9 m²	1538 sqft

S - Storage SC - Services Cupboard WD - Washer Dryer FF - Fridge Freezer
HO - Hob & Oven DW - Dishwasher FW - Fitted Wardrobe

ROYAL ALBERT WHARF

TEL: 020 8357 4579

WEBSITE: www.royalalbertwharf.com



Notting Hill Sales is the sales arm of Notting Hill Housing Group. Royal Albert Wharf is a marketing name and will not necessarily form part of the approved postal address. The information in this document is indicative only and is intended to act as a guide only to the finished product. Accordingly, due to Notting Hill Sales' policy of continuous improvement, the finished product may vary from the information provided. These particulars should not be relied upon as accurately describing any of the specific matters described by any order under Consumer Protection Regulations 2008. Nor do they constitute a contract or warranty. For new build properties, Notting Hill Sales abides by the NHBC's Consumer Code for Home Builders. For more information please visit www.nhbc.co.uk. Computer Generated Images (CGIs) are indicative only. Furniture shown in the CGIs is not included. Details are correct at the time of going to print, April 2016.