

# APARTMENTS 15, 23, 31 & 39

## 1 BEDROOM APARTMENT

WHEELERS HOUSE



### KITCHEN/LIVING/DINING AREA

6.42m x 4.96m 21'1" x 16'3"

### BEDROOM

3.46m x 3.12m 11'4" x 10'3"

### BALCONY

2.05m x 1.93m 6'9" x 6'4"

### TOTAL

48.26 sq. m. / 519 sq. ft.



GROUND



FIRST



SECOND



THIRD



FOURTH



FIFTH



SIXTH



SEVENTH

### KEY:

DW = DISHWASHER FF = FRIDGE FREEZER HIU = HEATING INTERFACE UNIT HO = HOB  
J = JULIETTE BALCONY S = STORAGE W = BUILT-IN WARDROBE WD = WASHER/DRYER

The floorplans depict a typical layout of this housetype. For exact plot specification, details of external and internal finishes, dimensions and floorplan differences consult your Sales Executive. All dimensions are + or - 50mm and floorplans are not shown to scale.

# APARTMENTS 14, 22, 30 & 38

## 1 BEDROOM APARTMENT

WHEELERS HOUSE



### KITCHEN/LIVING/DINING AREA

7.27m x 3.03m

23'10" x 9'11"

### BEDROOM

3.98m x 3.13m

13'0" x 10'3"

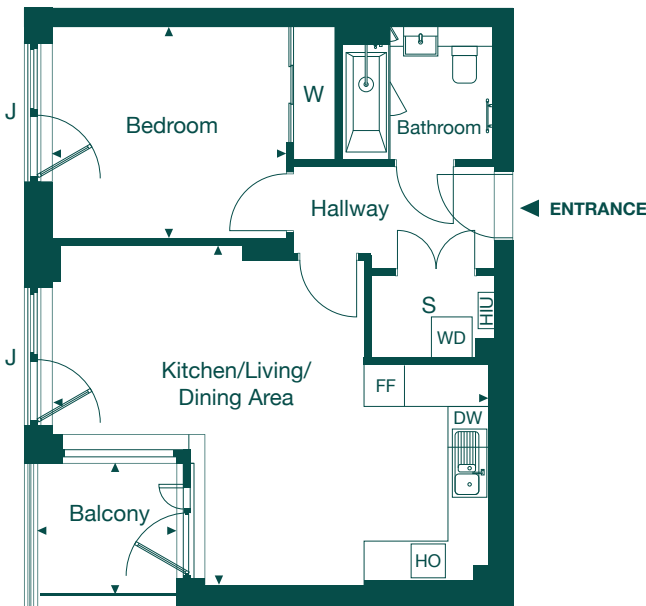
### BALCONY

2.71m x 1.59m

8'11" x 5'3"

### TOTAL

48.52 sq. m. / 522 sq. ft.



GROUND



FIRST



SECOND



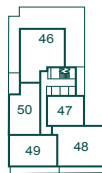
THIRD



FOURTH



FIFTH



SIXTH



SEVENTH

### KEY:

**DW** = DISHWASHER **FF** = FRIDGE FREEZER **HIU** = HEATING INTERFACE UNIT **HO** = HOB  
**J** = JULIETTE BALCONY **S** = STORAGE **W** = BUILT-IN WARDROBE **WD** = WASHER/DRYER

The floorplans depict a typical layout of this housetype. For exact plot specification, details of external and internal finishes, dimensions and floorplan differences consult your Sales Executive. All dimensions are + or - 50mm and floorplans are not shown to scale.

WHEELERS HOUSE

APARTMENTS 9, 16, 24, 32 & 40

1 BEDROOM APARTMENT

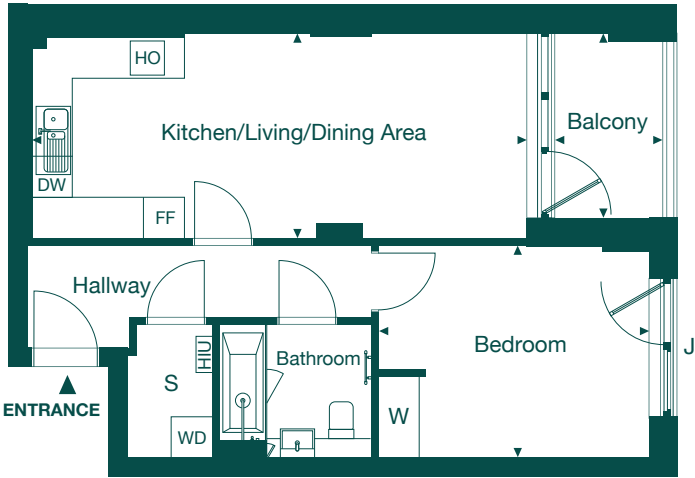


**KITCHEN/LIVING/DINING AREA**  
7.27m x 3.03m      23'10" x 9'11"

**BEDROOM**  
3.98m x 3.13m      13'0" x 10'3"

**BALCONY**  
2.71m x 1.59m      8'11" x 5'3"

**TOTAL**  
49.11 sq. m. / 528 sq. ft.



GROUND



FIRST



SECOND



THIRD



FOURTH



FIFTH



SIXTH



SEVENTH

**KEY:**  
**DW** = DISHWASHER    **FF** = FRIDGE FREEZER    **HIU** = HEATING INTERFACE UNIT    **HO** = HOB  
**J** = JULIETTE BALCONY    **S** = STORAGE    **W** = BUILT-IN WARDROBE    **WD** = WASHER/DRYER

The floorplans depict a typical layout of this housetype. For exact plot specification, details of external and internal finishes, dimensions and floorplan differences consult your Sales Executive. All dimensions are + or - 50mm and floorplans are not shown to scale.

WHEELERS HOUSE

APARTMENTS 10, 17, 25, 33 & 41

1 BEDROOM APARTMENT



KITCHEN/LIVING/DINING AREA

7.67m x 3.29m      25'2" x 10'10"

BEDROOM

4.13m x 3.12m      13'7" x 10'3"

BALCONY

3.03m x 1.59m      9'11" x 5'3"

TOTAL

49.84 sq. m. / 536 sq. ft.



GROUND



FIRST



SECOND



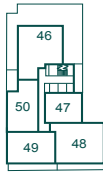
THIRD



FOURTH



FIFTH



SIXTH



SEVENTH

**KEY:**  
**DW** = DISHWASHER    **FF** = FRIDGE FREEZER    **HIU** = HEATING INTERFACE UNIT    **HO** = HOB  
**J** = JULIETTE BALCONY    **S** = STORAGE    **W** = BUILT-IN WARDROBE    **WD** = WASHER/DRYER

The floorplans depict a typical layout of this housetype. For exact plot specification, details of external and internal finishes, dimensions and floorplan differences consult your Sales Executive. All dimensions are + or – 50mm and floorplans are not shown to scale.

# APARTMENTS 11, 18, 26, 34, 42, 47 & 51

## 1 BEDROOM APARTMENT

WHEELERS HOUSE



### KITCHEN/LIVING/DINING AREA

7.60m x 3.32m 24'11" x 10'11"

### BEDROOM

4.13m x 3.12m 13'7" x 10'3"

### APARTMENTS 11, 18, 26, 34, 42 & 47 BALCONY

3.03m x 1.59m 9'11" x 5'3"

### TOTAL

49.96 sq. m. / 537 sq. ft.

### APARTMENT 51 BALCONY

6.19m x 1.59m 20'4" X 5'3"



GROUND



FIRST



SECOND



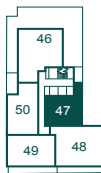
THIRD



FOURTH



FIFTH



SIXTH



SEVENTH

### KEY:

DW = DISHWASHER FF = FRIDGE FREEZER HIU = HEATING INTERFACE UNIT HO = HOB  
J = JULIETTE BALCONY S = STORAGE W = BUILT-IN WARDROBE WD = WASHER/DRYER

The floorplans depict a typical layout of this housetype. For exact plot specification, details of external and internal finishes, dimensions and floorplan differences consult your Sales Executive. All dimensions are + or - 50mm and floorplans are not shown to scale.

# APARTMENT 54

## 2 BEDROOM APARTMENT

WHEELERS HOUSE



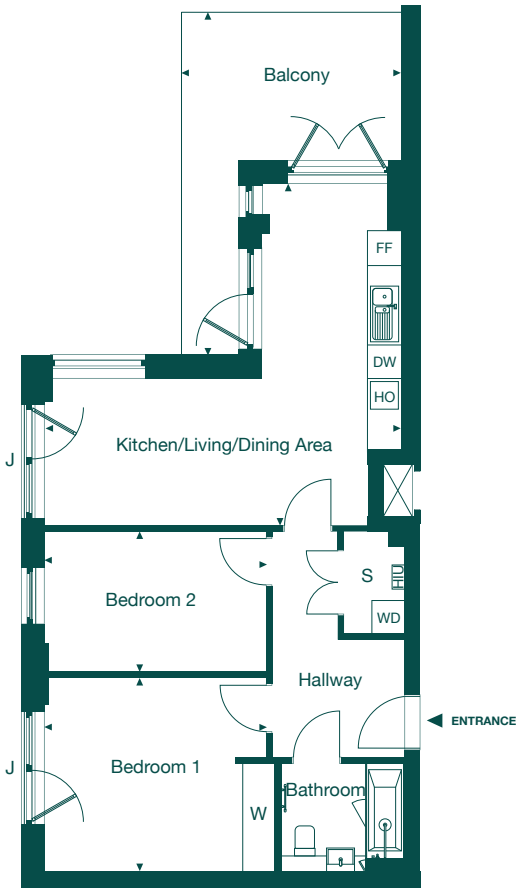
**KITCHEN/LIVING/DINING AREA**  
6.43m x 6.15m      21'0" x 20'1"

**BEDROOM 1**  
4.00m x 3.50m      13'1" x 11'4"

**BEDROOM 2**  
4.00m x 2.54m      13'1" x 8'2"

**BALCONY**  
6.15m x 2.34m      20'1" x 12'9"

**TOTAL**  
65.83 sq. m. / 708 sq. ft.



GROUND



FIRST



SECOND



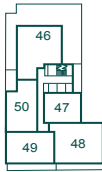
THIRD



FOURTH



FIFTH



SIXTH



SEVENTH

**KEY:**

**DW** = DISHWASHER   **FF** = FRIDGE FREEZER   **HIU** = HEATING INTERFACE UNIT   **HO** = HOB  
**J** = JULIETTE BALCONY   **S** = STORAGE   **W** = BUILT-IN WARDROBE   **WD** = WASHER/DRYER

The floorplans depict a typical layout of this housetype. For exact plot specification, details of external and internal finishes, dimensions and floorplan differences consult your Sales Executive. All dimensions are + or - 50mm and floorplans are not shown to scale.

# APARTMENT 45

## 2 BEDROOM APARTMENT

WHEELCHAIR ADAPTABLE

WHEELERS HOUSE



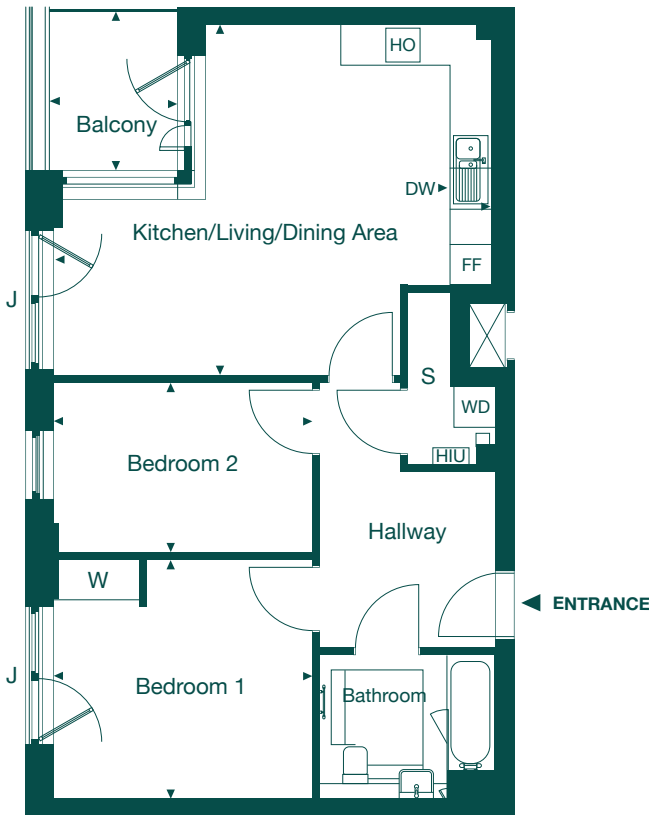
**KITCHEN/LIVING/DINING AREA**  
6.40m x 5.16m      21'11" x 16'11"

**BEDROOM 1**  
3.80m x 3.53m      12'7" x 11'7"

**BEDROOM 2**  
3.80m x 2.50m      12'7" x 8'2"

**BALCONY**  
2.34m x 1.90m      7'8" x 6'3"

**TOTAL**  
67.87 sq. m. / 730 sq. ft.



GROUND



FIRST



SECOND



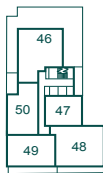
THIRD



FOURTH



FIFTH



SIXTH



SEVENTH

**KEY:**

**DW** = DISHWASHER   **FF** = FRIDGE FREEZER   **HIU** = HEATING INTERFACE UNIT   **HO** = HOB  
**J** = JULIETTE BALCONY   **S** = STORAGE   **W** = BUILT-IN WARDROBE   **WD** = WASHER/DRYER

The floorplans depict a typical layout of this housetype. For exact plot specification, details of external and internal finishes, dimensions and floorplan differences consult your Sales Executive. All dimensions are + or - 50mm and floorplans are not shown to scale.

# APARTMENT 50

## 2 BEDROOM APARTMENT

WHEELERS HOUSE



**KITCHEN/LIVING/DINING AREA**

6.43m x 5.16m      21'0" x 16'9"

**BEDROOM 1**

4.00m x 3.50m      13'1" x 11'4"

**BEDROOM 2**

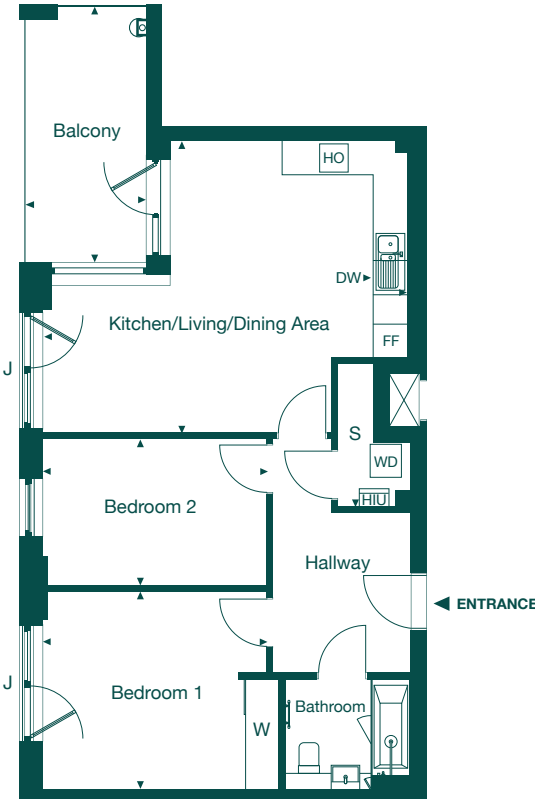
4.00m x 2.60m      13'1" x 8'5"

**BALCONY**

4.52m x 2.15m      14'8" x 7'0"

**TOTAL**

67.87 sq. m. / 730 sq. ft.



GROUND



FIRST



SECOND



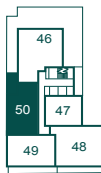
THIRD



FOURTH



FIFTH



SIXTH



SEVENTH

**KEY:**

**DW** = DISHWASHER   **FF** = FRIDGE FREEZER   **HIU** = HEATING INTERFACE UNIT   **HO** = HOB  
**J** = JULIETTE BALCONY   **S** = STORAGE   **W** = BUILT-IN WARDROBE   **WD** = WASHER/DRYER

The floorplans depict a typical layout of this housetype. For exact plot specification, details of external and internal finishes, dimensions and floorplan differences consult your Sales Executive. All dimensions are + or - 50mm and floorplans are not shown to scale.

# APARTMENTS 20, 28, 36, 44, 49 & 53

## 2 BEDROOM APARTMENT



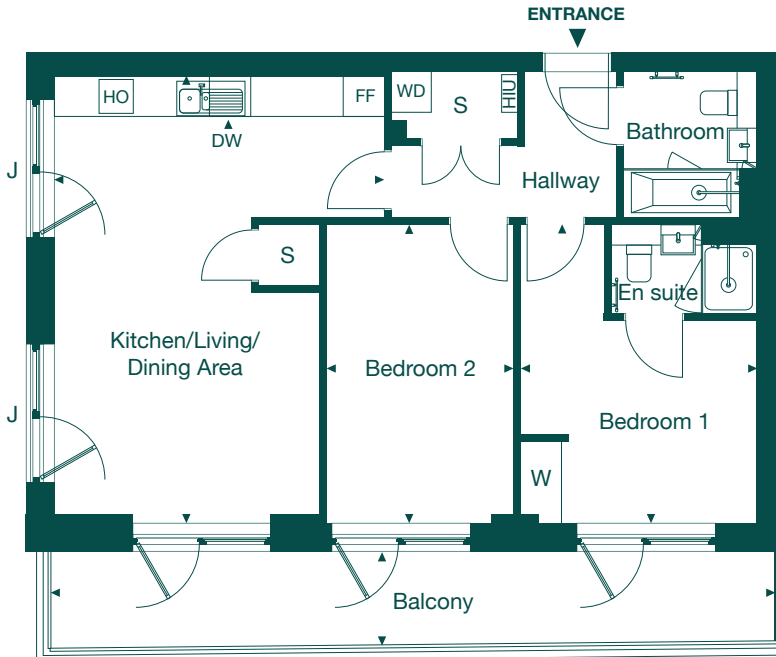
**KITCHEN/LIVING/DINING AREA**  
6.57m x 4.84m      21'7" x 15'11"

**BEDROOM 1**  
4.40m x 3.48m      14'5" x 11'5"

**BEDROOM 2**  
4.40m x 2.75m      14'5" x 9'0"

**BALCONY**  
10.64m x 1.37m      34'11" x 4'6"

**TOTAL**  
68.58 sq. m. / 738 sq. ft.



GROUND



FIRST



SECOND



THIRD



FOURTH



FIFTH



SIXTH



SEVENTH

**KEY:**

**DW** = DISHWASHER    **FF** = FRIDGE FREEZER    **HIU** = HEATING INTERFACE UNIT    **HO** = HOB  
**J** = JULIETTE BALCONY    **S** = STORAGE    **W** = BUILT-IN WARDROBE    **WD** = WASHER/DRYER

The floorplans depict a typical layout of this housetype. For exact plot specification, details of external and internal finishes, dimensions and floorplan differences consult your Sales Executive. All dimensions are + or - 50mm and floorplans are not shown to scale.

# APARTMENT 6

## 3 BEDROOM APARTMENT

WHEELERS HOUSE



**KITCHEN/LIVING/DINING AREA**  
8.72m x 3.37m    28'7" x 11'1"

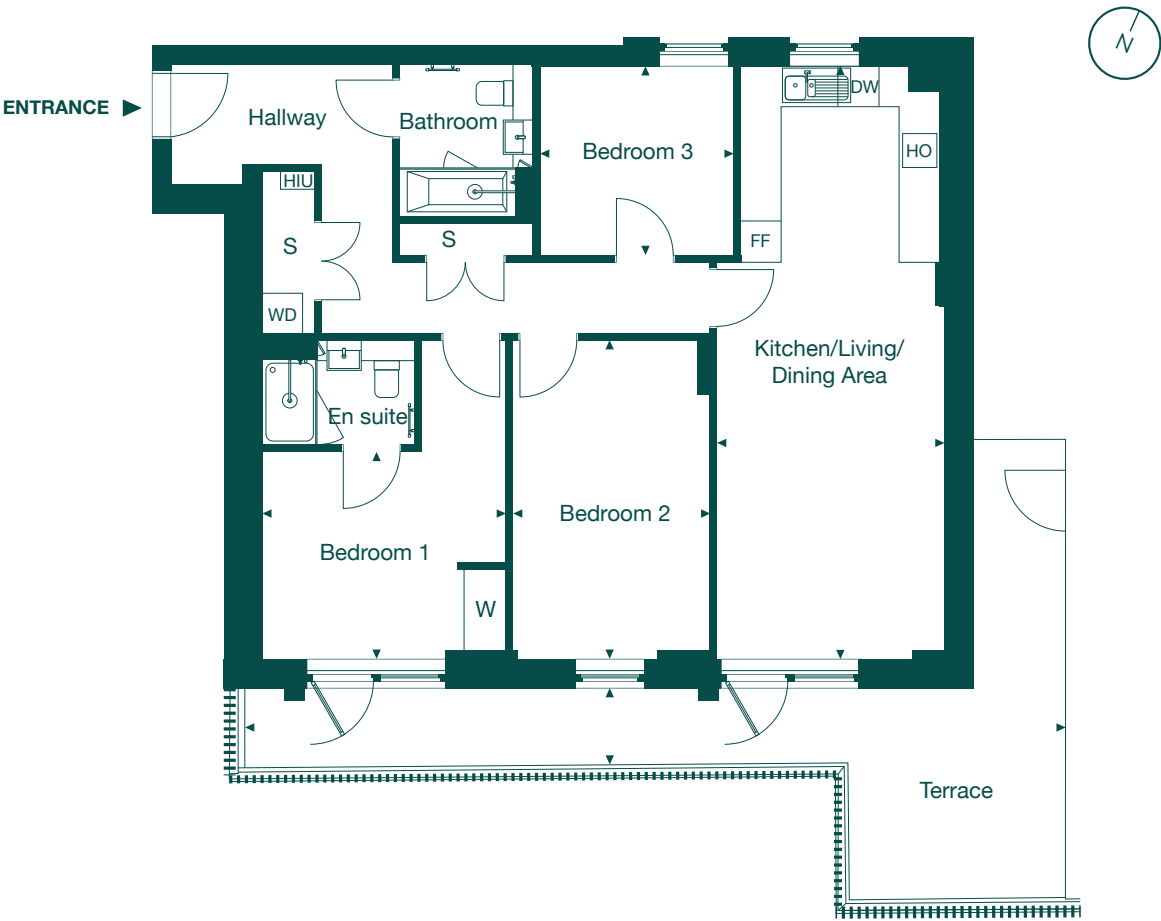
**BEDROOM 1**  
4.70m x 3.59m    15'5" x 11'9"

**BEDROOM 2**  
4.70m x 2.91m    15'5" x 9'7"

**BEDROOM 3**  
2.85m x 2.78m    9'4" x 9'1"

**TERRACE**  
10.23m x 1.22m    33'7" x 4'0"

**TOTAL**  
90.04 sq. m. / 969 sq. ft.



GROUND



FIRST



SECOND



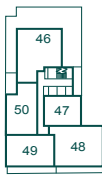
THIRD



FOURTH



FIFTH



SIXTH



SEVENTH

**KEY:**

**DW** = DISHWASHER    **FF** = FRIDGE FREEZER    **HIU** = HEATING INTERFACE UNIT  
**HO** = HOB    **S** = STORAGE    **W** = BUILT-IN WARDROBE    **WD** = WASHER/DRYER

The floorplans depict a typical layout of this housetype. For exact plot specification, details of external and internal finishes, dimensions and floorplan differences consult your Sales Executive. All dimensions are + or - 50mm and floorplans are not shown to scale.

# APARTMENTS 12, 19, 27, 35, 43, 48 & 52

## 3 BEDROOM APARTMENT

WHEELERS HOUSE



**KITCHEN/LIVING/DINING AREA**  
8.72m x 3.37m    28'7" x 11'1"

**BEDROOM 1**  
4.70m x 3.59m    15'5" x 11'9"

**BEDROOM 2**  
4.70m x 2.91m    15'5" x 9'7"

**BEDROOM 3**  
2.85m x 2.78m    9'4" x 9'1"

**BALCONY**  
10.23m x 1.22m    33'7" x 4'0"

**TOTAL**  
90.14 sq. m. / 970 sq. ft.



GROUND



FIRST



SECOND



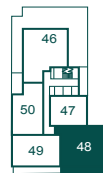
THIRD



FOURTH



FIFTH



SIXTH



SEVENTH

**KEY:**

**DW** = DISHWASHER    **FF** = FRIDGE FREEZER    **HIU** = HEATING INTERFACE UNIT  
**HO** = HOB    **S** = STORAGE    **W** = BUILT-IN WARDROBE    **WD** = WASHER/DRYER

The floorplans depict a typical layout of this housetype. For exact plot specification, details of external and internal finishes, dimensions and floorplan differences consult your Sales Executive. All dimensions are + or - 50mm and floorplans are not shown to scale.

# APARTMENT 46

## 3 BEDROOM APARTMENT

WHEELERS HOUSE



**KITCHEN/LIVING/DINING AREA**  
9.29m x 3.65m    30'4" x 11'9"

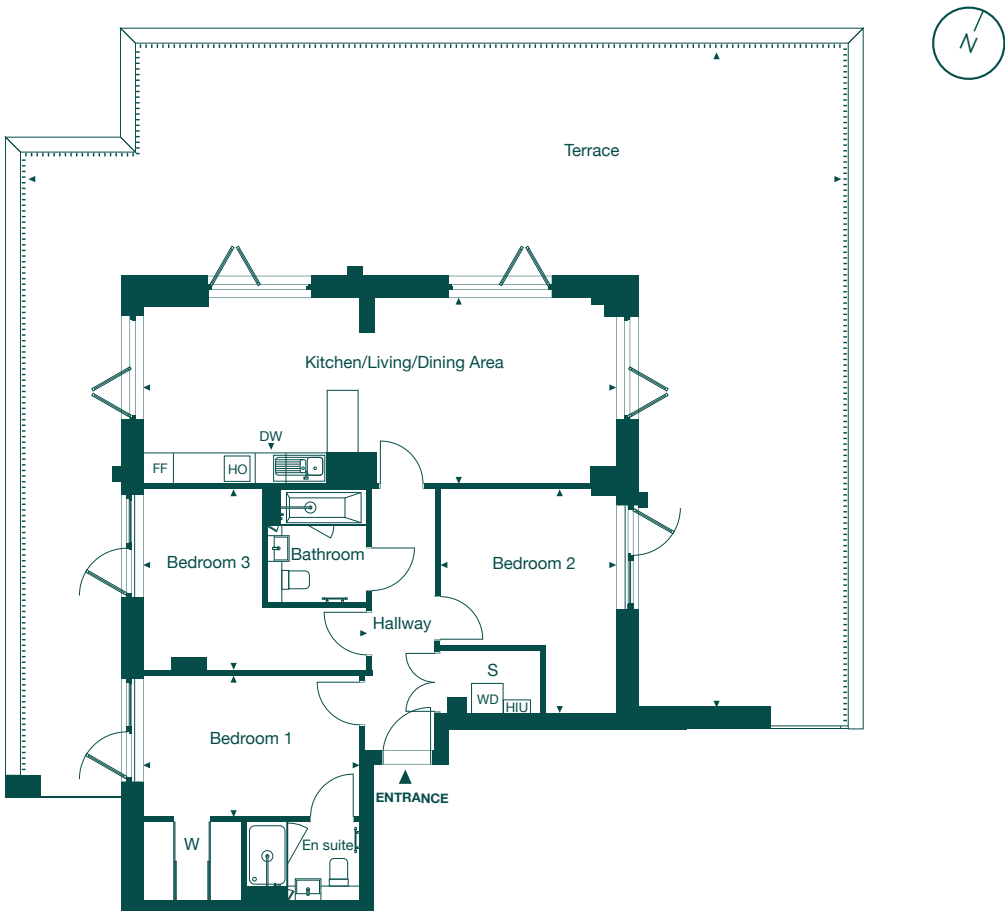
**BEDROOM 1**  
4.26m x 2.79m    13'9" x 9'1"

**BEDROOM 2**  
4.41m x 3.46m    14'4" x 11'3"

**BEDROOM 3**  
4.39m x 3.55m    14'4" x 11'6"

**TERRACE**  
15.90m x 12.80m    52'1" x 41'9"

**TOTAL**  
92.44 sq. m. / 995 sq. ft.



**KEY:**  
**DW** = DISHWASHER   **FF** = FRIDGE FREEZER   **HIU** = HEATING INTERFACE UNIT  
**HO** = HOB   **S** = STORAGE   **W** = BUILT-IN WARDROBE   **WD** = WASHER/DRYER

The floorplans depict a typical layout of this housetype. For exact plot specification, details of external and internal finishes, dimensions and floorplan differences consult your Sales Executive. All dimensions are + or - 50mm and floorplans are not shown to scale.