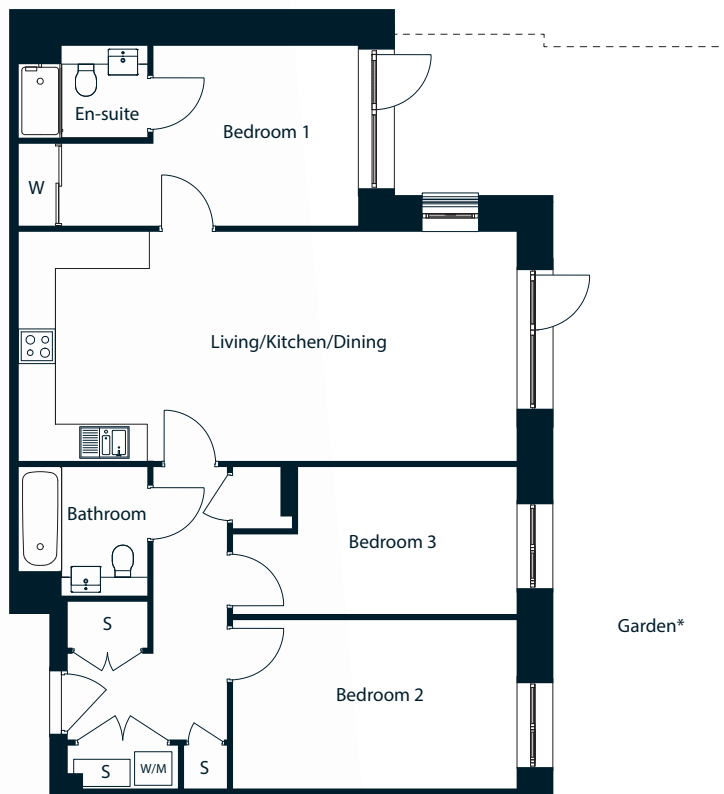


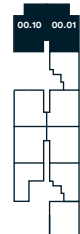
Type 120

3 bedroom apartment

Plots 00.01, 00.10†



Ground Floor
Plot 00.01,
00.10



Dimensions	Metric	Imperial
Living/Kitchen/ Dining Room	8.1m x 3.7m	26'7" x 12'2"
Bedroom 1	4.9m x 2.9m	16' 1" x 9' 6"
Bedroom 2	4.6m x 2.8m	15' 1" x 9' 2"
Bedroom 3	4.6m x 2.4m	15' 1" x 7' 10"
Total Internal Area	88.3 sq m	950.5 sq ft
Garden *	6m x 4.7m	19' 8" x 15' 5"

S Storage W Wardrobe E/S Ensuite W/M Washing machine † indicates handed plot

The floor plans provided are intended to only give a general indication of the proposed floor layout, are not drawn to scale and are not intended to form part of any offer, contract, warranty or representation. Measurements are given to the widest point, are approximate and are given as a guide only. They must not be relied upon as a statement or representation of fact. Do not use these measurements for carpet sizes, appliance spaces or items of furniture. Kitchen, bathroom and utility layouts may differ to build, and specific plot sizes and layouts may vary within the same unit type. Window sizes may vary. * Gardens only applicable to ground floor plots, in lieu of balconies. Garden size varies according to plot. For further clarification regarding specific individual plots, please ask our Sales Advisors.