

EVOLU - TION

SOUTHALL



Because good homes make everything possible



EVOLU- TION

SOUTHALL

JOIN THE EVOLUTION



THE EVOLU- TION

In amongst the leafy green spaces of West London, Southall is known for its rich South Asian heritage and bustling independent high street. This community is evolving. With the Elizabeth line soon to offer residents a quick and easy commute into Zone One, Southall is gaining recognition as an increasingly desirable place to live. Here is Evolution. Here are homes for savvy first time buyers, looking for a strong investment, as well as bricks and mortar.

HERE IS EVOLUTION.

YOUR HOME

Award winning housing association, Network Homes is offering studio, one, two, three and four bedroom apartments and duplexes within Evolution, all available through Shared Ownership. Varying in layout and size, to appeal to a broad range of future residents, these apartments all share a spacious layout, quality specification and intelligent design.

With open-plan interiors, these apartments are ideal for hosting friends and family for special occasions, or for enjoying the peace and quiet of your own home during a cosy night in. All homes benefit from a private outdoor space, perfect for a morning coffee or evening drink.

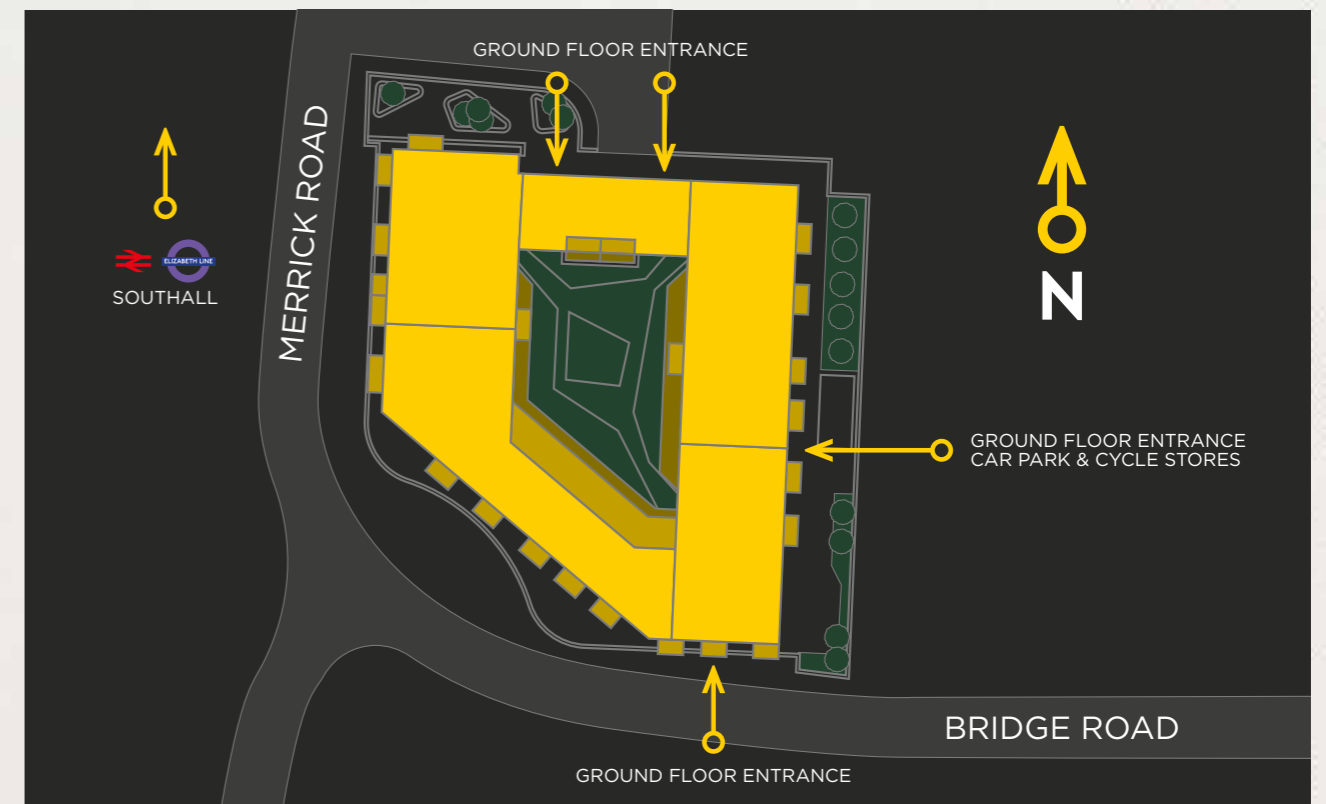





COMMUNITY

Just a few minutes from the station, these homes are within easy reach of central London but still part of a home-grown community; a buzzy residential neighbourhood, where contemporary architecture sits alongside the quaint remains of the historic rural village of Southall Green.

Matching the local community spirit, residents have the added bonus of access to a shared courtyard garden, a place for neighbours to stop for a chat, read a book in the sun or enjoy the first shoots of spring.



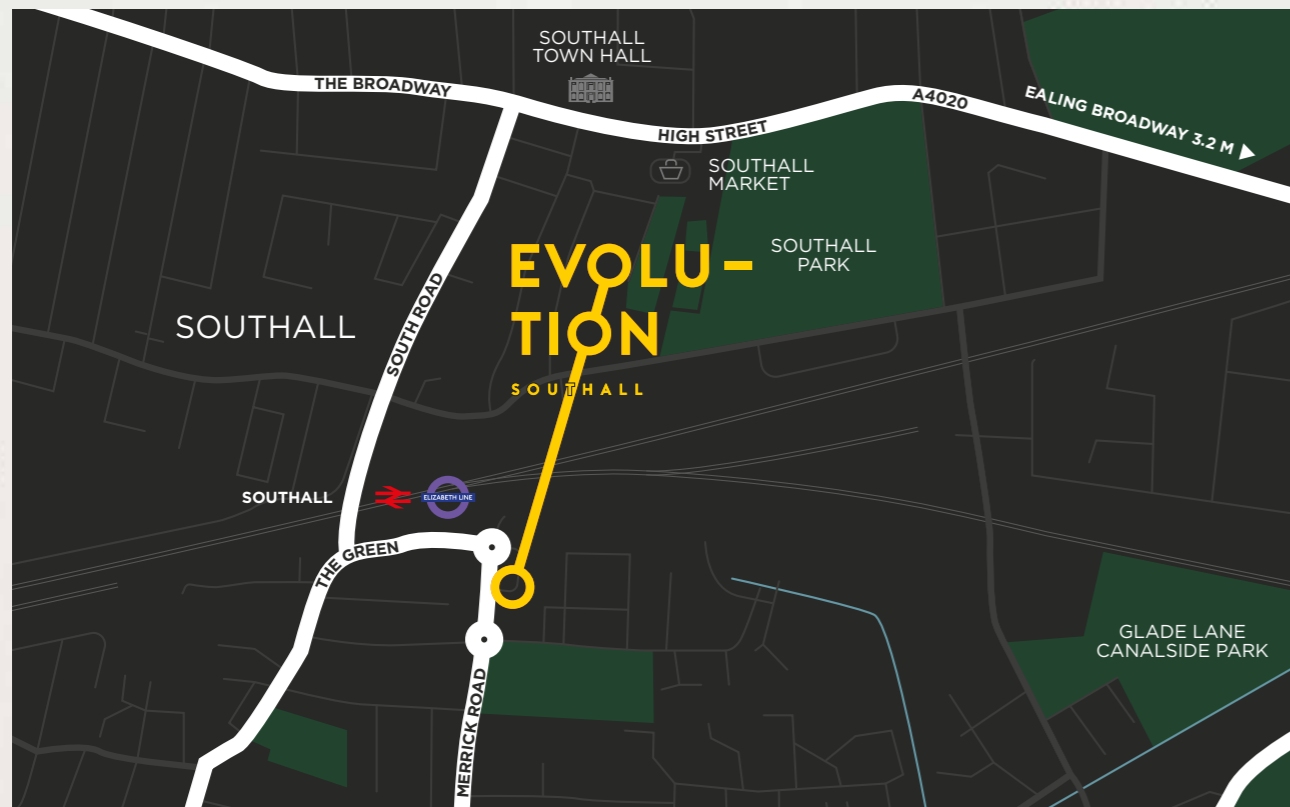


**EVOLUTION IS WELL
CONNECTED AND
TRANSPORT LINKS ARE
SOON TO BE IMPROVED
WITH THE ELIZABETH LINE**

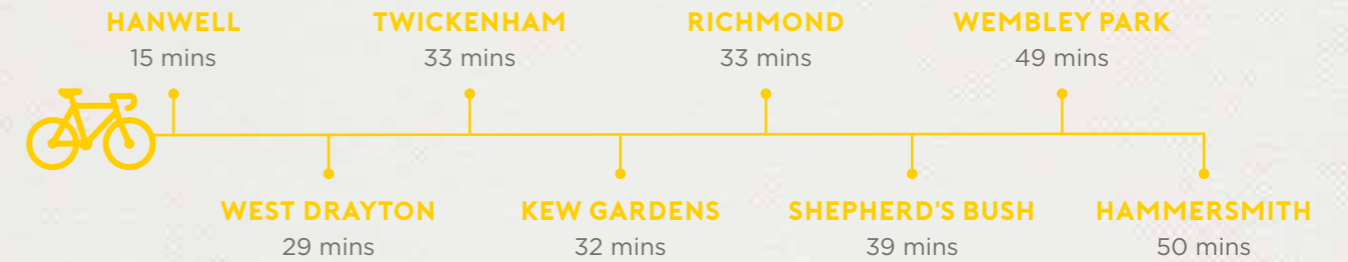
CON- NECTED

Southall mainline train station is just a seven minute walk from Evolution. Currently served by Great Western Rail, which runs services into London Paddington from just 17 minutes, or west to Windsor and Reading. Enjoy the hustle-and-bustle of the Oxford Circus shopping scene in 35 minutes, or a more leisurely day in Shepherd's Bush Westfields 23 minutes away.

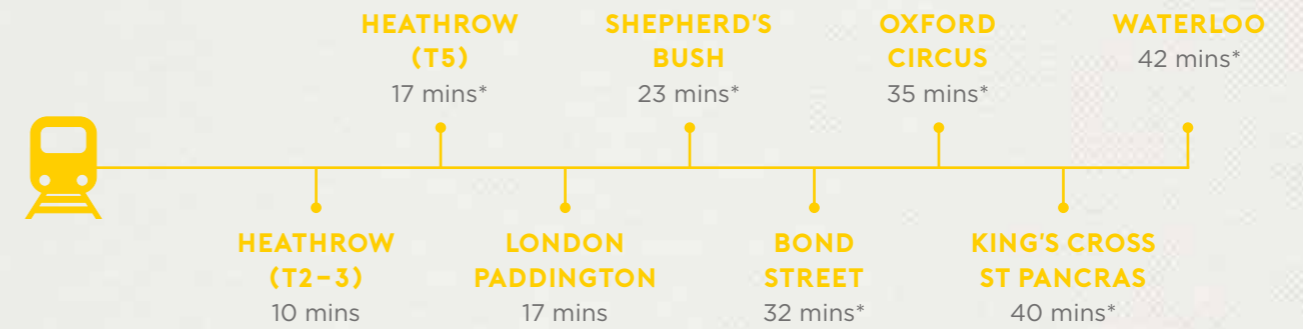
The M4 and M25 are both reachable in 15 minutes by car. Hop in a cab and travel just 14 minutes to Heathrow Airport for spontaneous weekend getaways.



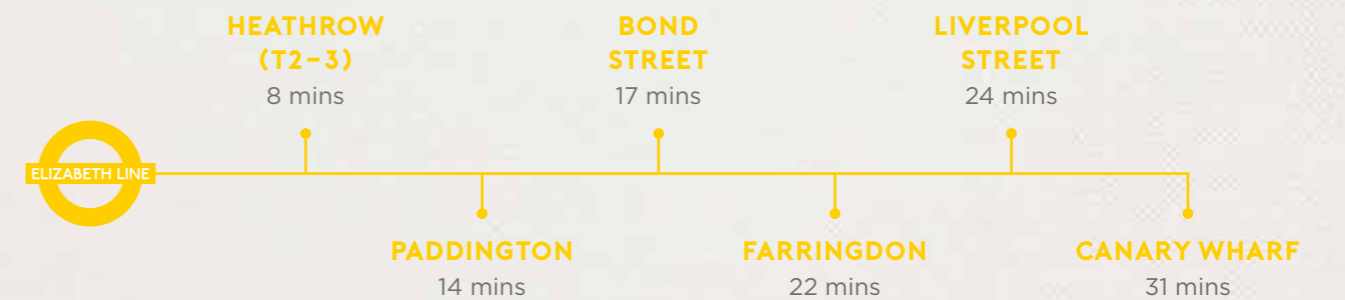
CYCLING



TRAIN



ELIZABETH LINE (COMING SOON)



Travel times taken from Southall station and cannot be guaranteed. Source: Transport for London and Google Maps. Elizabeth line travel times have been taken from crossrail.co.uk. *Journey involves both underground and overground/bus.



INTER- IORS

The apartments have been carefully finished, to offer luxury living without compromising on practicality. Living spaces are open-plan, with all kitchens including fully integrated Smeg electrical appliances. A sense of light and space is created by the inclusion of a private outdoor space to all apartments.

SPECIFICATION

GENERAL SPECIFICATIONS

- Matte white painted walls and brilliant white finish smooth ceilings.
- Satin white finish door linings, architraves and skirting.
- Walnut veneered internal doors.
- Brushed stainless steel door furniture including lever door handles with square shaft and rose.
- Brushed metal switch and socket plates, selected with USB sockets.
- Audio/ visual security entry phone system to apartments. Duplexes have independent door ringer.
- Recessed LED downlighting with white bezels.
- Thermostatically controlled central heating via flat panelled radiators.
- Pressurised hot and cold water supplies.
- Double glazing throughout.
- Majority with balcony, terrace or winter garden.

KITCHEN AREA

- Amtico Walnut flooring.
- Two tone designer kitchen units with dark grey base level finish, white matte finish to wall units, all with soft close doors and concealed handles.
- Recon stone worktop with splashback.
- Smeg stainless steel fully integrated electric appliances to include:-
 - Single low level oven*
 - Ceramic hob
 - Cooker hood
 - Washer/ dryer (freestanding if within utility cupboard)
 - Dishwasher
 - Fridge/ freezer*
 - Microwave
- Stainless steel bowl under-mounted sink with monobloc mixer tap and grooved worktop drainer.
- Low energy wall unit under lighting.
- Centralised appliance isolator switch panel.
- Studio apartments have combination microwave and fridge/ freezer compartment.

LIVING / DINING AREA

- Amtico Walnut flooring.
- TV socket set to living room (Sky+) subject to subscription. All TV socket sets to include digital radio and terrestrial sockets.
- Brushed metal telephone and data sockets to living/ dining area.

BATH & SHOWER ROOMS

- Large format mid brown porcelain tiled floor and large format beige porcelain fully tiled walls.
- Walnut framed recess with mirrored cabinet, mirror and feature downlight.
- Shaver socket.
- White bathroom suite featuring shower tray or steel bath as appropriate, floor mounted WC, concealed dual flush cistern and semi-recessed basin.
- Chrome monobloc mixer tap, bottle trap, cistern push plate, thermostatic bath filler/ shower mixer diverter.
- White coloured glass bath panel.
- Concealed plumbing fixed chrome shower head over bath and in shower enclosure with low level hose and handset.
- Chrome plated thermostatic electric heated towel rail.
- Clear glass frameless bath screen/ shower enclosure.

BEDROOM

- Oatmeal coloured carpet with underlay.
- Floor to ceiling fitted wardrobe with sliding doors, hanging rail & drawers to bedroom 1
- TV socket set to bedroom 1 (Sky) subject to subscription. All TV socket sets to include digital radio and terrestrial sockets.
- Brushed metal telephone and data extension sockets to bedroom 1.

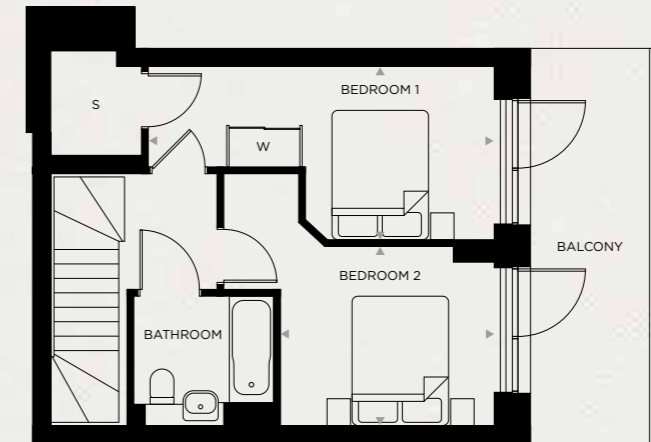
APARTMENT HALLWAY AND LANDING

- Amtico Walnut flooring.
- Audio/ visual entry-phone system connected to communal entrance door for apartments .

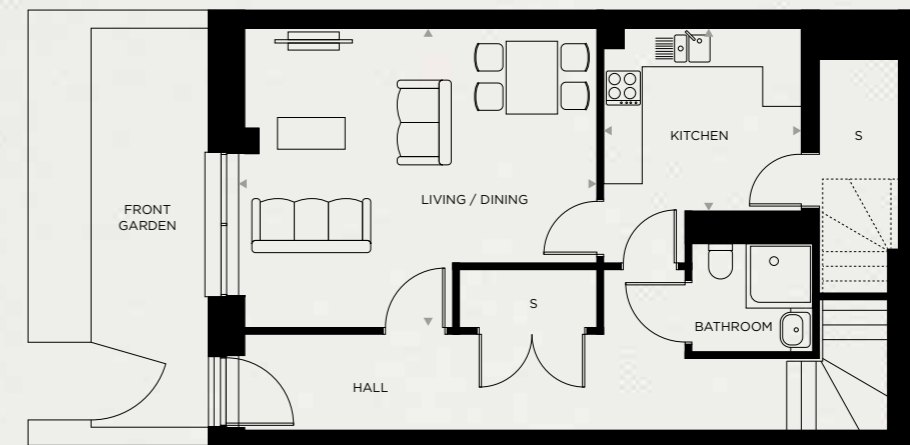
COMMUNAL AREAS

- Private landscaped rooftop gardens.
- Private podium level courtyard garden and communal space.
- Low energy wall light fittings.
- Lifts to all apartment levels.
- Independent entrance foyers serving each core with stair and lift access.
- Duplex apartments have their own individual front doors allowing independent external access.
- Cycle stores.
- Refuse stores.

THE DUPLIX- ES



UPPER LEVEL



LOWER LEVEL



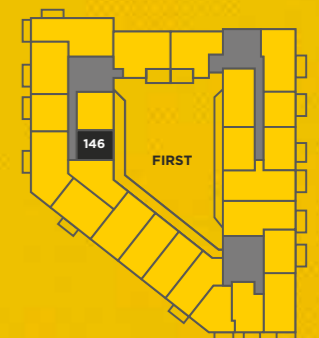
TWO BEDROOM DUPLIX

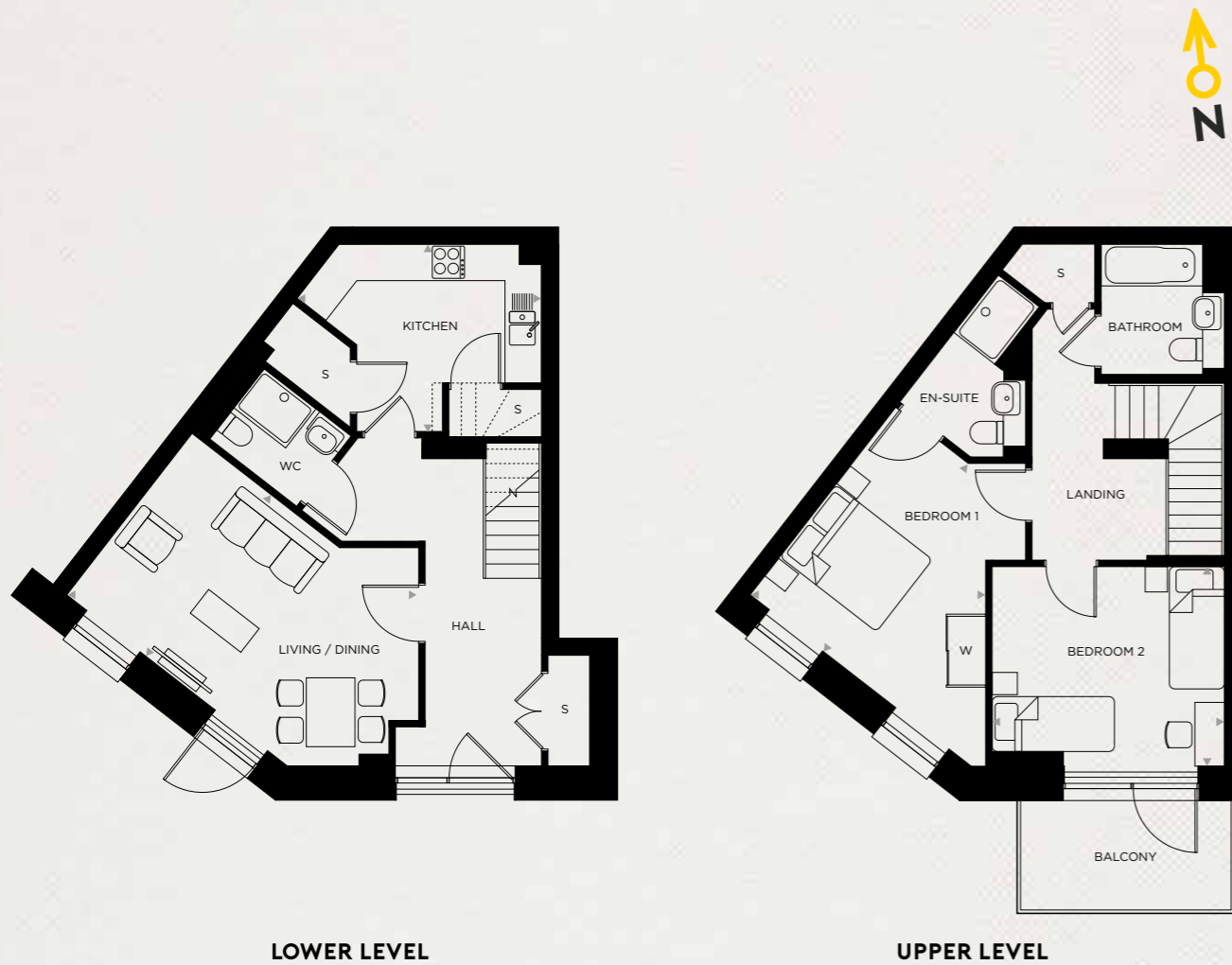
PLOT TYPE AN | APARTMENT NO. 146

LIVING / DINING	3.74 m	x	5.62 m	12'2"	x	18'4"
KITCHEN	3.74 m	x	3.15 m	12'2"	x	10'3"
BEDROOM 1	3.41 m	x	2.76 m	11'2"	x	9'1"
BEDROOM 2	3.40 m	x	2.85 m	11'2"	x	9'4"
INTERNAL AREA	107.3 sq m		1,154 sq ft			

KEY — S: Store / W: Wardrobe

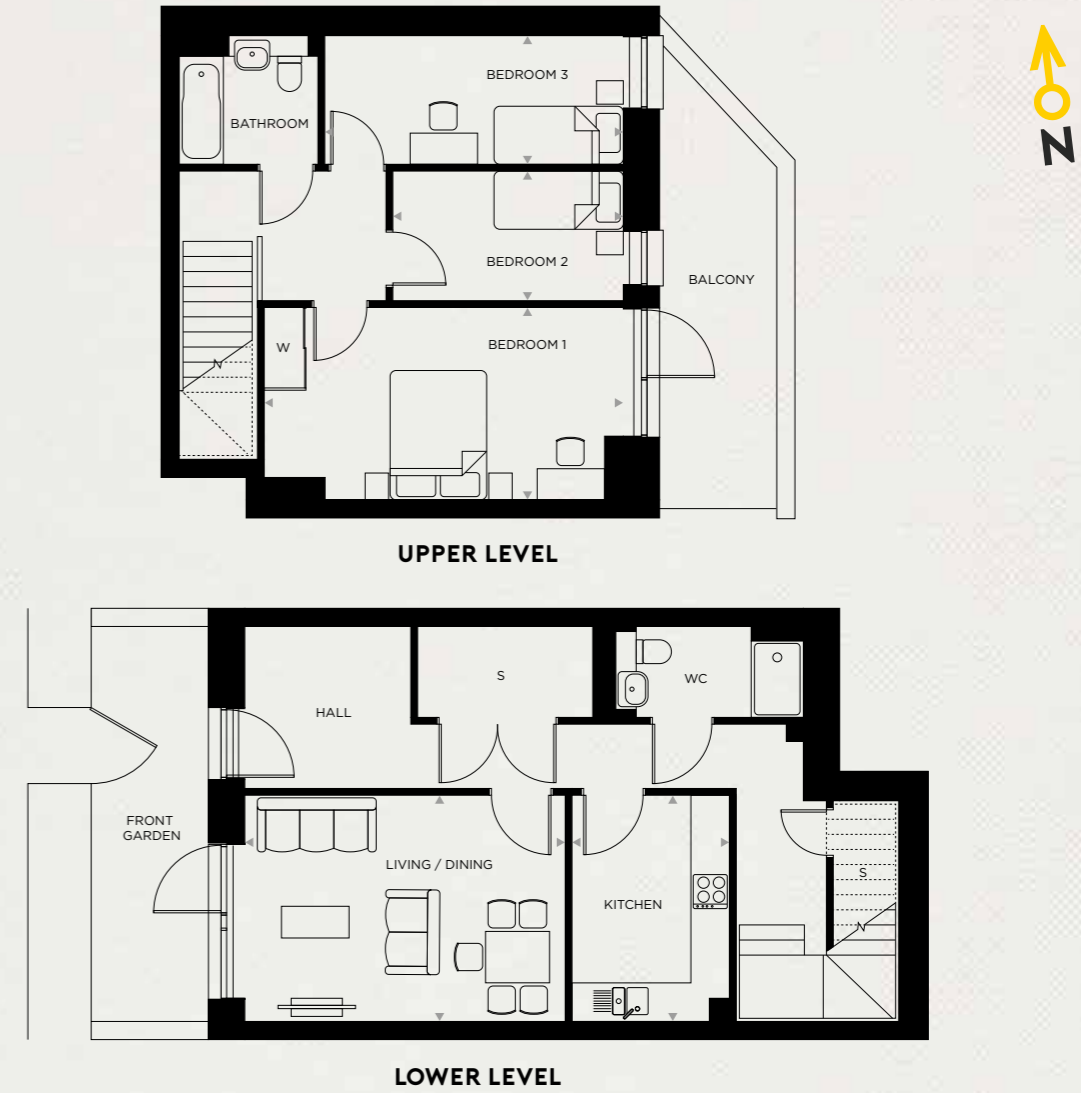
Floorplans are not to scale and are indicative only. Location of windows, doors, bathroom fittings, kitchen units and appliances may differ. Dimensions given are approximate and should not be used to order carpets or furniture. Balcony, patio, winter garden or terrace sizes and locations may differ from those illustrated.





LOWER LEVEL

UPPER LEVEL



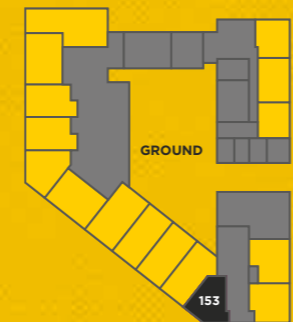
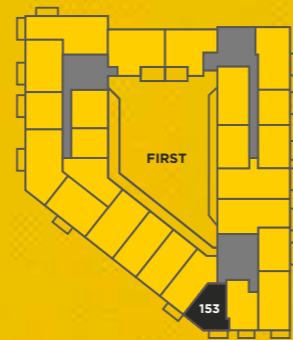
UPPER LEVEL

LOWER LEVEL

TWO BEDROOM DUPLEX

PLOT TYPE AO | APARTMENT NO. 153

LIVING / DINING	4.70 m	x	3.66 m	15'4"	x	12'0"
KITCHEN	3.11 m	x	2.98 m	10'2"	x	9'7"
BEDROOM 1	3.94 m	x	2.78 m	12'9"	x	9'2"
BEDROOM 2	3.88 m	x	3.33 m	12'7"	x	10'9"
INTERNAL AREA	102.0 sq m		1,098 sq ft			



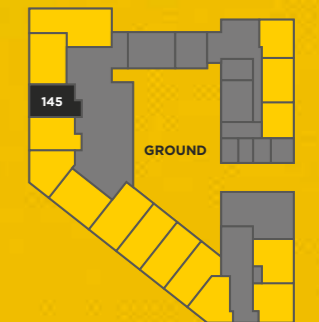
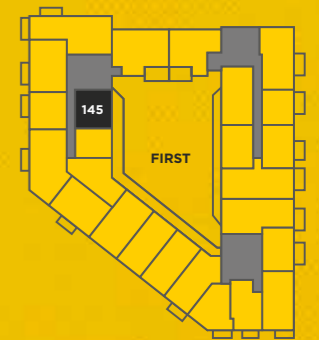
KEY — S: Store / W: Wardrobe

Floorplans are not to scale and are indicative only. Location of windows, doors, bathroom fittings, kitchen units and appliances may differ. Dimensions given are approximate and should not be used to order carpets or furniture. Balcony, patio, winter garden or terrace sizes and locations may differ from those illustrated.

THREE BEDROOM DUPLEX

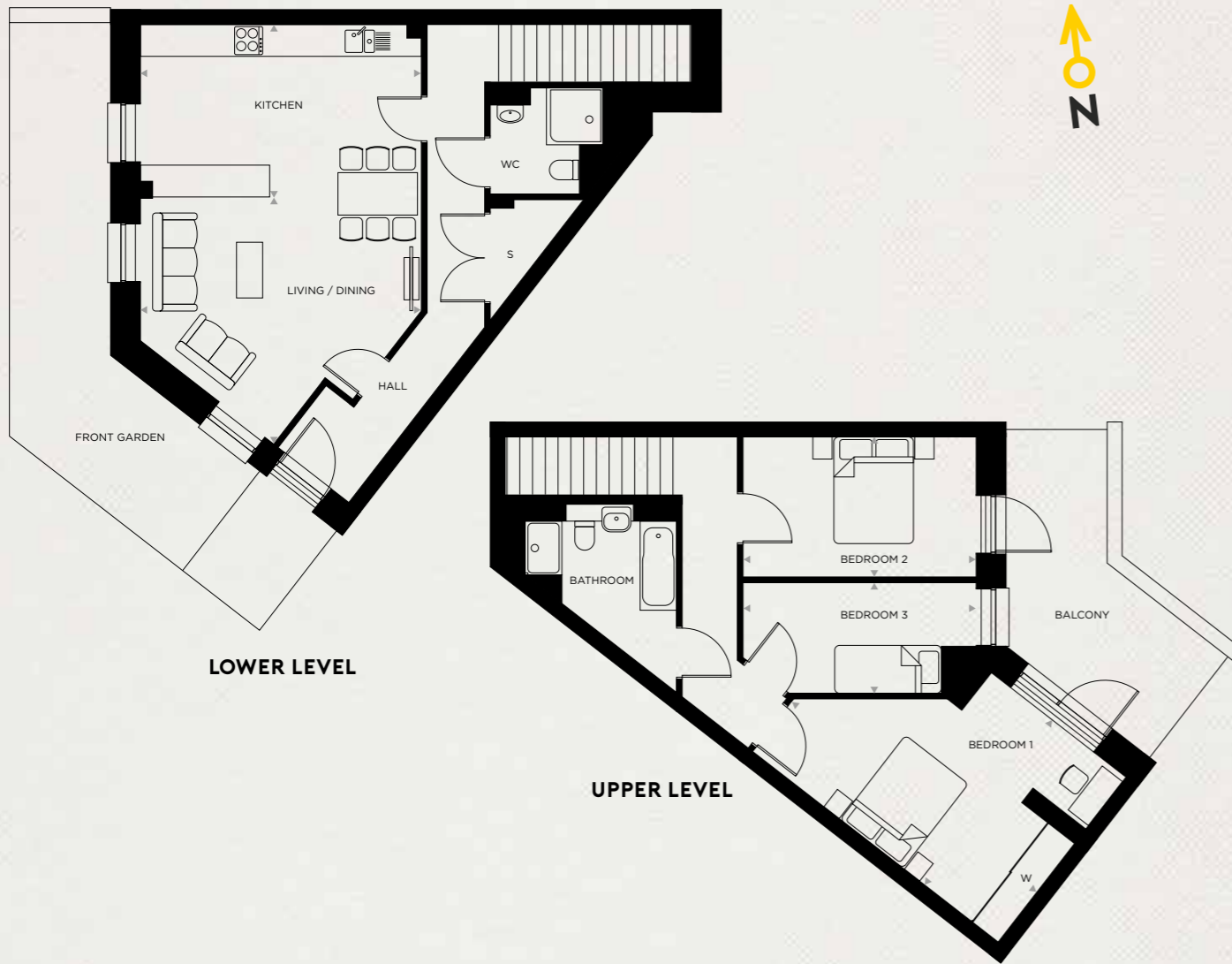
PLOT TYPE AR | APARTMENT NO. 145

LIVING / DINING	5.11 m	x	3.59 m	16'8"	x	11'8"
KITCHEN	3.58 m	x	2.51 m	11'8"	x	8'2"
BEDROOM 1	5.75 m	x	3.07 m	18'9"	x	10'1"
BEDROOM 2	4.78 m	x	2.07 m	15'7"	x	6'8"
BEDROOM 3	3.67 m	x	2.04 m	12'1"	x	6'7"
INTERNAL AREA	112.0 sq m		1,206 sq ft			



KEY — S: Store / W: Wardrobe

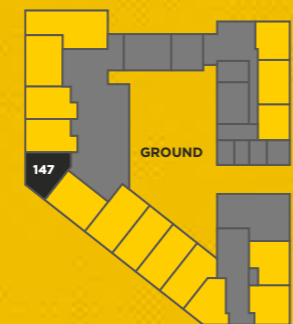
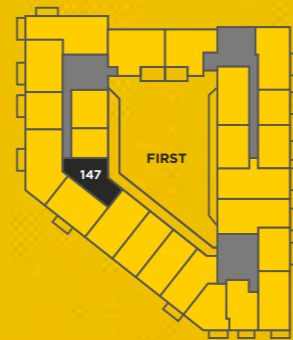
Floorplans are not to scale and are indicative only. Location of windows, doors, bathroom fittings, kitchen units and appliances may differ. Dimensions given are approximate and should not be used to order carpets or furniture. Balcony, patio, winter garden or terrace sizes and locations may differ from those illustrated.



THREE BEDROOM DUPLEX

PLOT TYPE AS | APARTMENT NO. 147

LIVING / DINING / KITCHEN	5.39 m	x	5.30 m	17'7"	x	17'4"
BEDROOM 1	5.85 m	x	3.94 m	19'2"	x	12'9"
BEDROOM 2	4.39 m	x	2.64 m	14'4"	x	8'7"
BEDROOM 3	4.39 m	x	2.09 m	14'4"	x	6'8"
INTERNAL AREA	119.2 sq m		1,283 sq ft			



KEY — S: Store / W: Wardrobe

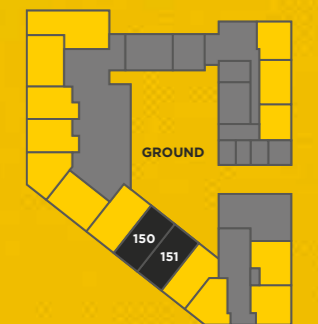
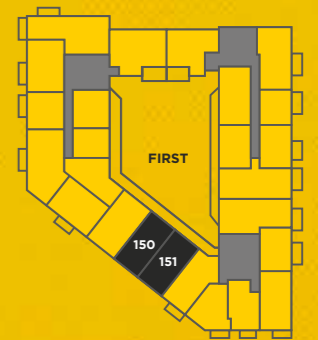
Floorplans are not to scale and are indicative only. Location of windows, doors, bathroom fittings, kitchen units and appliances may differ. Dimensions given are approximate and should not be used to order carpets or furniture. Balcony, patio, winter garden or terrace sizes and locations may differ from those illustrated.



THREE BEDROOM DUPLEX

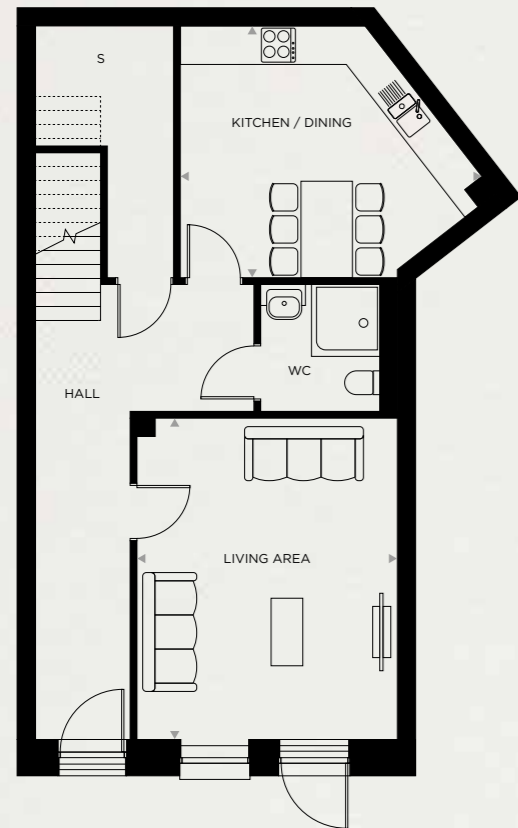
PLOT TYPE AT | APARTMENT NO. 150 151

KITCHEN / DINING	4.60 m	x	4.39 m	15'1"	x	14'4"
LIVING AREA	5.16 m	x	4.15 m	16'9"	x	13'6"
BEDROOM 1	4.97 m	x	3.53 m	16'3"	x	11'6"
BEDROOM 2	3.48 m	x	3.71 m	11'4"	x	12'2"
BEDROOM 3	4.97 m	x	2.15 m	16'3"	x	7'1"
INTERNAL AREA	130.3 sq m		1,403 sq ft			

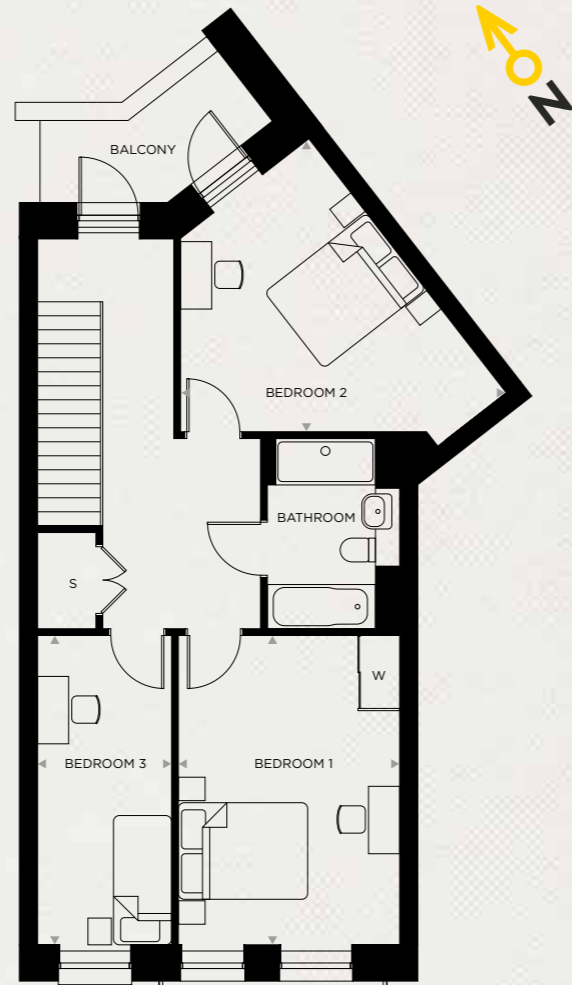


KEY — S: Store / W: Wardrobe

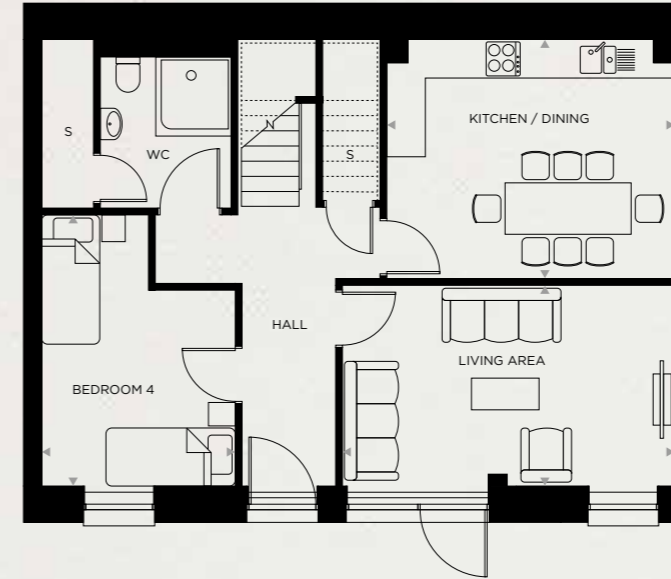
Floorplans are not to scale and are indicative only. Location of windows, doors, bathroom fittings, kitchen units and appliances may differ. Dimensions given are approximate and should not be used to order carpets or furniture. Balcony, patio, winter garden or terrace sizes and locations may differ from those illustrated.



LOWER LEVEL



UPPER LEVEL



LOWER LEVEL



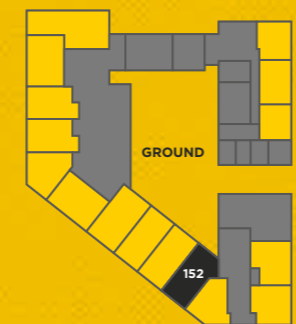
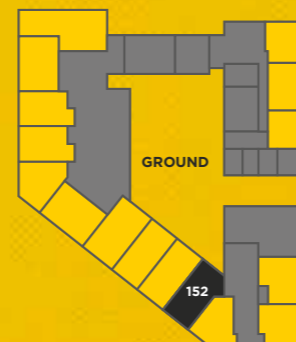
UPPER LEVEL



THREE BEDROOM DUPLEX

PLOT TYPE AU | APARTMENT NO. 152

KITCHEN / DINING	3.98 m	x	3.45 m	13'1"	x	11'3"
LIVING AREA	5.11 m	x	4.15 m	16'8"	x	13'6"
BEDROOM 1	4.94 m	x	3.53 m	16'2"	x	11'6"
BEDROOM 2	3.12 m	x	4.66 m	10'2"	x	15'3"
BEDROOM 3	4.94 m	x	2.11 m	16'2"	x	6'9"
INTERNAL AREA	137.5 sq m		1,480 sq ft			



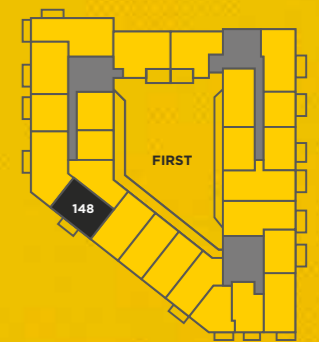
KEY — S: Store / W: Wardrobe

Floorplans are not to scale and are indicative only. Location of windows, doors, bathroom fittings, kitchen units and appliances may differ. Dimensions given are approximate and should not be used to order carpets or furniture. Balcony, patio, winter garden or terrace sizes and locations may differ from those illustrated.

FOUR BEDROOM DUPLEX

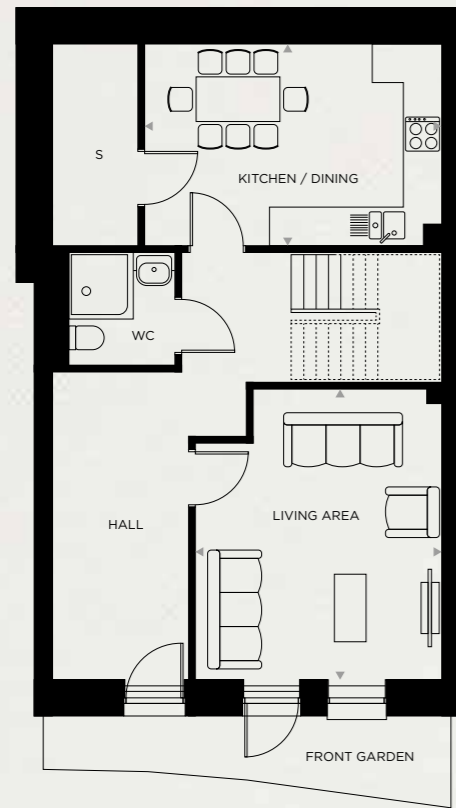
PLOT TYPE BC | APARTMENT NO. 148

KITCHEN / DINING	4.56 m	x	3.78 m	14'9"	x	12'4"
LIVING AREA	5.28 m	x	3.19 m	17'3"	x	10'5"
BEDROOM 1	4.91 m	x	2.96 m	16'1"	x	9'7"
BEDROOM 2	4.56 m	x	2.78 m	14'9"	x	9'1"
BEDROOM 3	3.21 m	x	2.80 m	10'5"	x	9'2"
BEDROOM 4	4.29 m	x	3.06 m	14'1"	x	10'0"
INTERNAL AREA	142.0 sq m		1,529 sq ft			

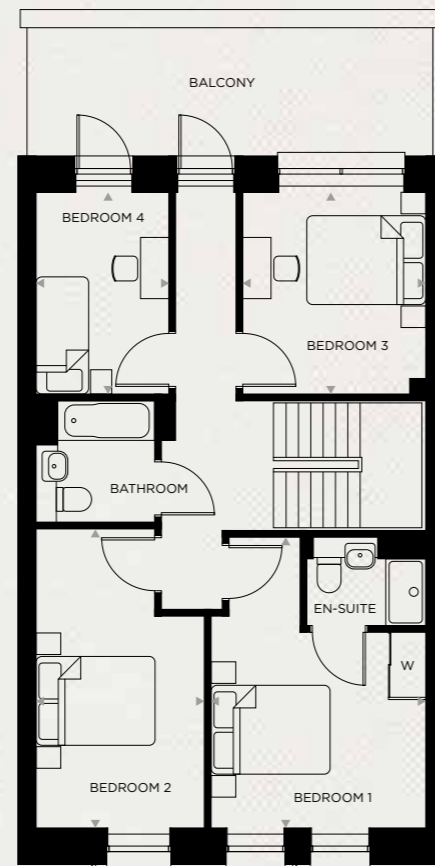


KEY — S: Store / W: Wardrobe

Floorplans are not to scale and are indicative only. Location of windows, doors, bathroom fittings, kitchen units and appliances may differ. Dimensions given are approximate and should not be used to order carpets or furniture. Balcony, patio, winter garden or terrace sizes and locations may differ from those illustrated.



LOWER LEVEL



UPPER LEVEL



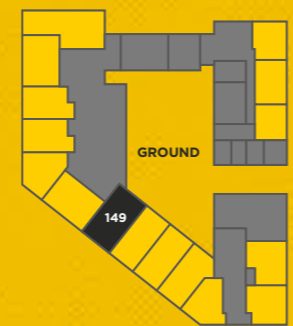
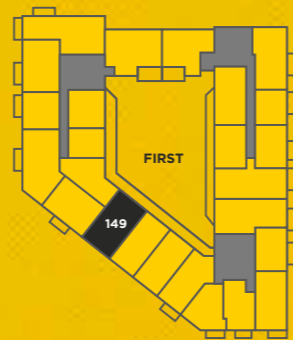
THE APARTMENTS



FOUR BEDROOM DUPLEX

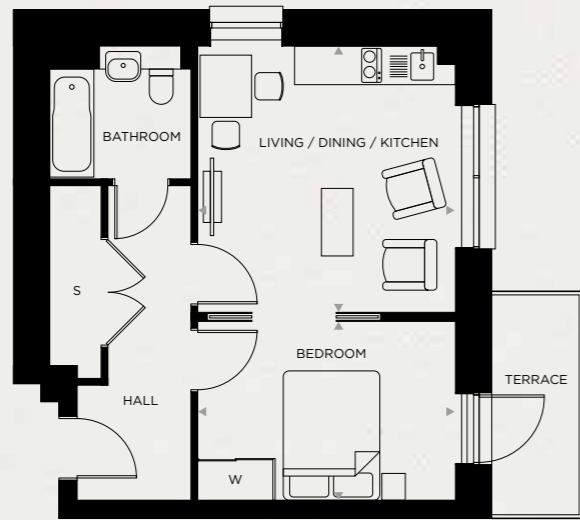
PLOT TYPE BD | APARTMENT NO. 149

KITCHEN / DINING	5.27 m	x	3.58 m	17'3"	x	11'8"
LIVING AREA	5.15 m	x	4.39 m	16'9"	x	14'4"
BEDROOM 1	5.17 m	x	3.79 m	16'9"	x	12'4"
BEDROOM 2	5.31 m	x	3.01 m	17'4"	x	9'9"
BEDROOM 3	3.58 m	x	3.24 m	11'8"	x	10'6"
BEDROOM 4	3.58 m	x	2.37 m	11'8"	x	7'8"
INTERNAL AREA	155.7 sq m		1,676 sq ft			



KEY — S: Store / W: Wardrobe

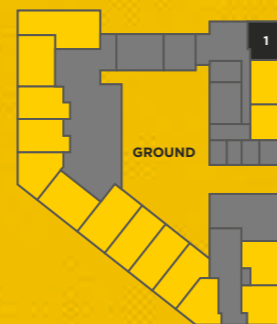
Floorplans are not to scale and are indicative only. Location of windows, doors, bathroom fittings, kitchen units and appliances may differ. Dimensions given are approximate and should not be used to order carpets or furniture. Balcony, patio, winter garden or terrace sizes and locations may differ from those illustrated.



STUDIO APARTMENT

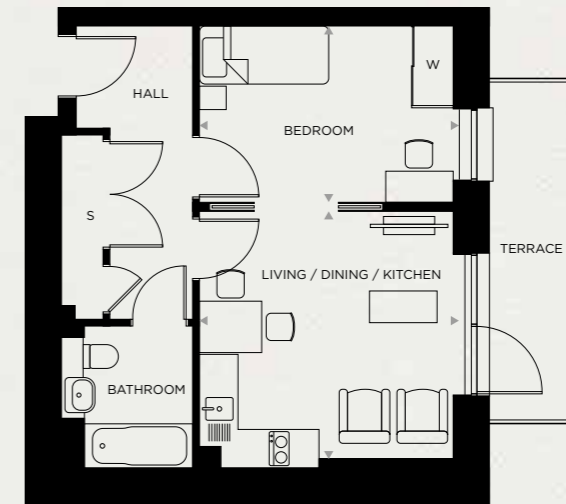
PLOT TYPE A | APARTMENT NO. 1

LIVING / DINING / KITCHEN	4.14 m	x	4.00 m	13'6"	x	13'1"
BEDROOM	4.00 m	x	2.80 m	13'1"	x	9'2"
INTERNAL AREA	43.8 sq m		472 sq ft			



KEY — S: Store / W: Wardrobe

Floorplans are not to scale and are indicative only. Location of windows, doors, bathroom fittings, kitchen units and appliances may differ. Dimensions given are approximate and should not be used to order carpets or furniture. Balcony, patio, winter garden or terrace sizes and locations may differ from those illustrated.



STUDIO APARTMENT

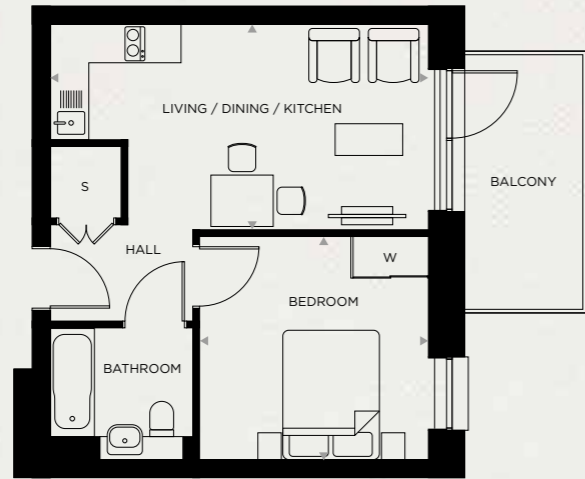
PLOT TYPE B | APARTMENT NO. 3

LIVING / DINING / KITCHEN	3.99 m	x	3.96 m	13'1"	x	12'9"
BEDROOM	3.96 m	x	2.15 m	12'9"	x	7'1"
INTERNAL AREA	41.8 sq m		450 sq ft			



KEY — S: Store / W: Wardrobe

Floorplans are not to scale and are indicative only. Location of windows, doors, bathroom fittings, kitchen units and appliances may differ. Dimensions given are approximate and should not be used to order carpets or furniture. Balcony, patio, winter garden or terrace sizes and locations may differ from those illustrated.



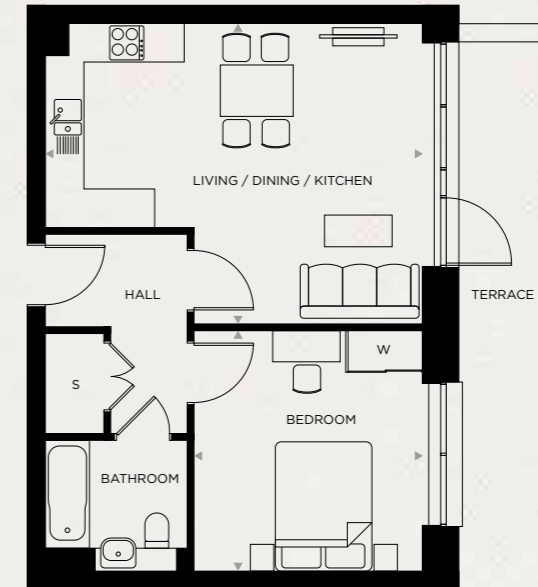
STUDIO APARTMENT

PLOT TYPE C | APARTMENT NO. 5

LIVING / DINING / KITCHEN	5.89 m	x	3.23 m	19'3"	x	10'6"
BEDROOM	3.57 m	x	3.48 m	11'7"	x	11'4"
INTERNAL AREA	40.1 sq m		432 sq ft			

KEY — S: Store / W: Wardrobe

Floorplans are not to scale and are indicative only. Location of windows, doors, bathroom fittings, kitchen units and appliances may differ. Dimensions given are approximate and should not be used to order carpets or furniture. Balcony, patio, winter garden or terrace sizes and locations may differ from those illustrated.



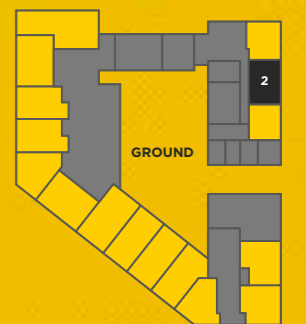
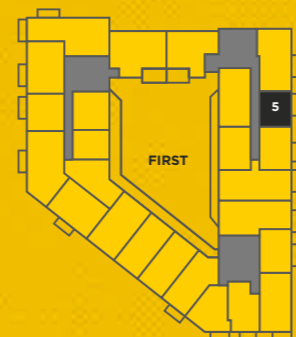
ONE BEDROOM APARTMENT

PLOT TYPE BE | APARTMENT NO. 2

LIVING / DINING / KITCHEN	5.89 m	x	4.68 m	19'3"	x	15'4"
BEDROOM	3.76 m	x	3.57 m	12'3"	x	11'7"
INTERNAL AREA	50.3 sq m		541 sq ft			

KEY — S: Store / W: Wardrobe

Floorplans are not to scale and are indicative only. Location of windows, doors, bathroom fittings, kitchen units and appliances may differ. Dimensions given are approximate and should not be used to order carpets or furniture. Balcony, patio, winter garden or terrace sizes and locations may differ from those illustrated.





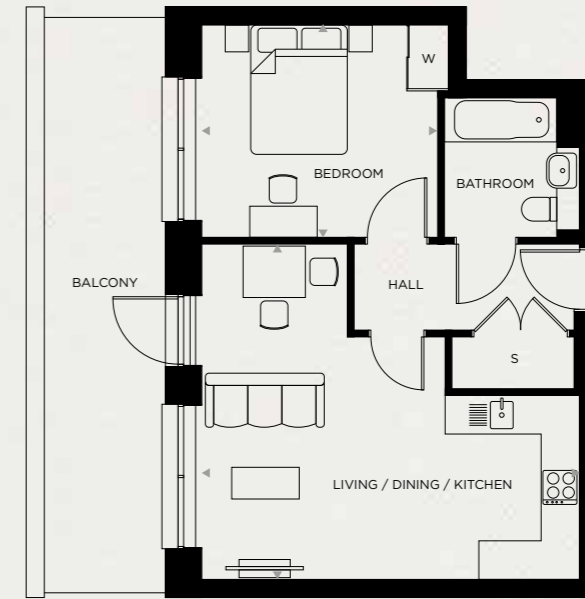
ONE BEDROOM APARTMENT

PLOT TYPE Js | APARTMENT NO. 6 13 20

LIVING / DINING / KITCHEN	5.88 m	x	4.82 m	19'3"	x	15'8"
BEDROOM	3.70 m	x	3.40 m	12'1"	x	11'2"
INTERNAL AREA	50.7 sq m		546 sq ft			

KEY — S: Store / W: Wardrobe

Floorplans are not to scale and are indicative only. Location of windows, doors, bathroom fittings, kitchen units and appliances may differ. Dimensions given are approximate and should not be used to order carpets or furniture. Balcony, patio, winter garden or terrace sizes and locations may differ from those illustrated.



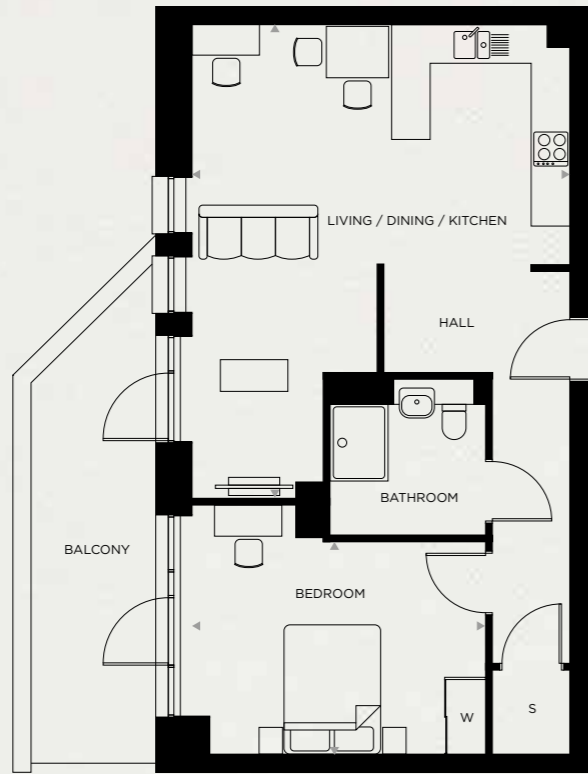
ONE BEDROOM APARTMENT

PLOT TYPE Ns | APARTMENT NO. 8 15

LIVING / DINING / KITCHEN	5.88 m	x	5.22 m	19'3"	x	17'1"
BEDROOM	3.84 m	x	3.32 m	12'6"	x	10'9"
INTERNAL AREA	48.4 sq m		521 sq ft			

KEY — S: Store / W: Wardrobe

Floorplans are not to scale and are indicative only. Location of windows, doors, bathroom fittings, kitchen units and appliances may differ. Dimensions given are approximate and should not be used to order carpets or furniture. Balcony, patio, winter garden or terrace sizes and locations may differ from those illustrated.



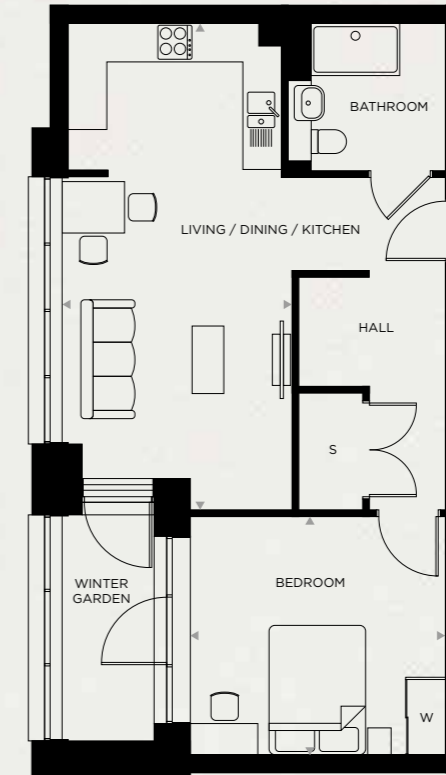
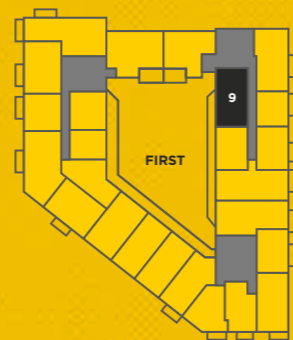
ONE BEDROOM APARTMENT

PLOT TYPE M | APARTMENT NO. 9

LIVING / DINING / KITCHEN	7.14 m	x	5.89 m	23'4"	x	19'3"
BEDROOM	4.59 m	x	3.88 m	15'1"	x	12'7"
INTERNAL AREA	66.9 sq m		720 sq ft			

KEY — S: Store / W: Wardrobe

Floorplans are not to scale and are indicative only. Location of windows, doors, bathroom fittings, kitchen units and appliances may differ. Dimensions given are approximate and should not be used to order carpets or furniture. Balcony, patio, winter garden or terrace sizes and locations may differ from those illustrated.



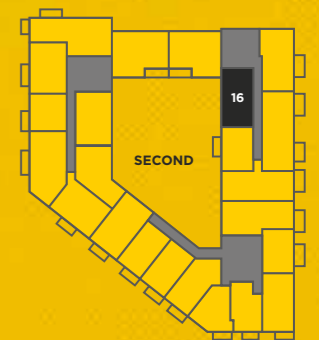
ONE BEDROOM APARTMENT

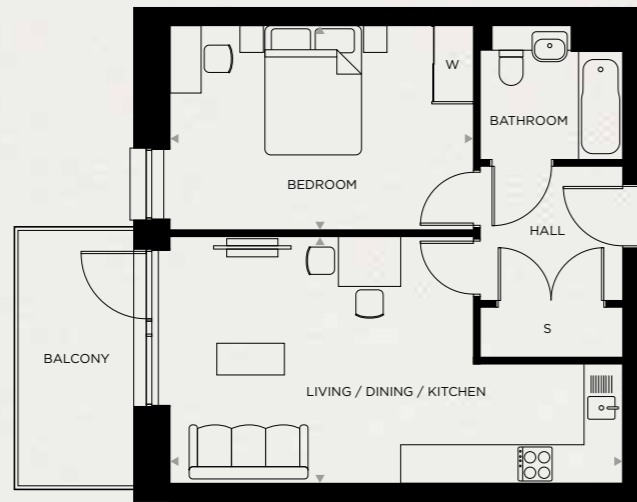
PLOT TYPE O | APARTMENT NO. 16

LIVING / DINING / KITCHEN	7.57 m	x	3.48 m	24'8"	x	11'4"
BEDROOM	4.01 m	x	3.71 m	13'2"	x	12'2"
INTERNAL AREA	59.2 sq m		637 sq ft			

KEY — S: Store / W: Wardrobe

Floorplans are not to scale and are indicative only. Location of windows, doors, bathroom fittings, kitchen units and appliances may differ. Dimensions given are approximate and should not be used to order carpets or furniture. Balcony, patio, winter garden or terrace sizes and locations may differ from those illustrated.





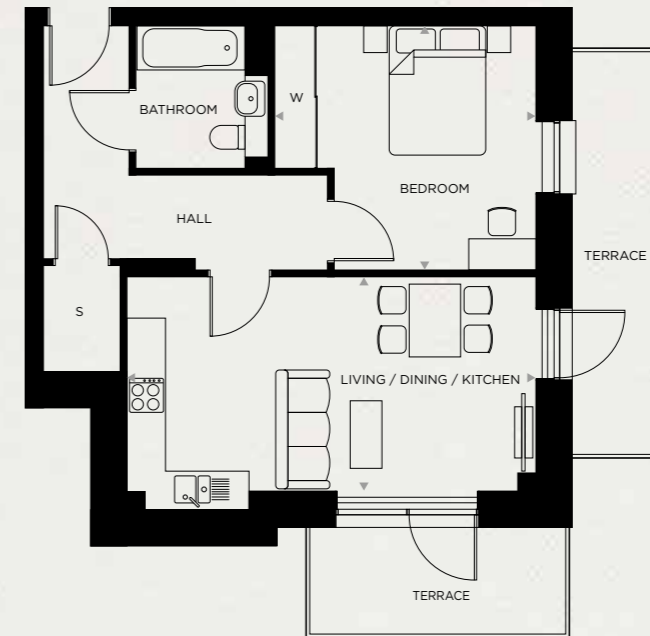
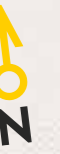
ONE BEDROOM APARTMENT

PLOT TYPE KA_s | APARTMENT NO. 717684

LIVING / DINING / KITCHEN	7.05 m	x	3.86 m	23'1"	x	12'7"
BEDROOM	4.73 m	x	3.16 m	15'5"	x	10'4"
INTERNAL AREA	50.2 sq m		540 sq ft			

KEY — S: Store / W: Wardrobe

Floorplans are not to scale and are indicative only. Location of windows, doors, bathroom fittings, kitchen units and appliances may differ. Dimensions given are approximate and should not be used to order carpets or furniture. Balcony, patio, winter garden or terrace sizes and locations may differ from those illustrated.



ONE BEDROOM APARTMENT

PLOT TYPE G | APARTMENT NO. 154

LIVING / DINING / KITCHEN	6.39 m	x	3.34 m	20'10"	x	10'10"
BEDROOM	4.08 m	x	3.81 m	13'4"	x	12'5"
INTERNAL AREA	53.8 sq m		579 sq ft			

KEY — S: Store / W: Wardrobe

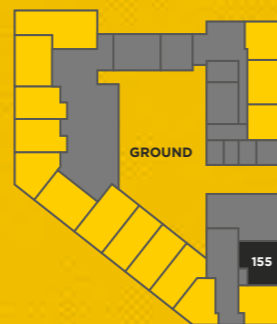
Floorplans are not to scale and are indicative only. Location of windows, doors, bathroom fittings, kitchen units and appliances may differ. Dimensions given are approximate and should not be used to order carpets or furniture. Balcony, patio, winter garden or terrace sizes and locations may differ from those illustrated.



ONE BEDROOM APARTMENT

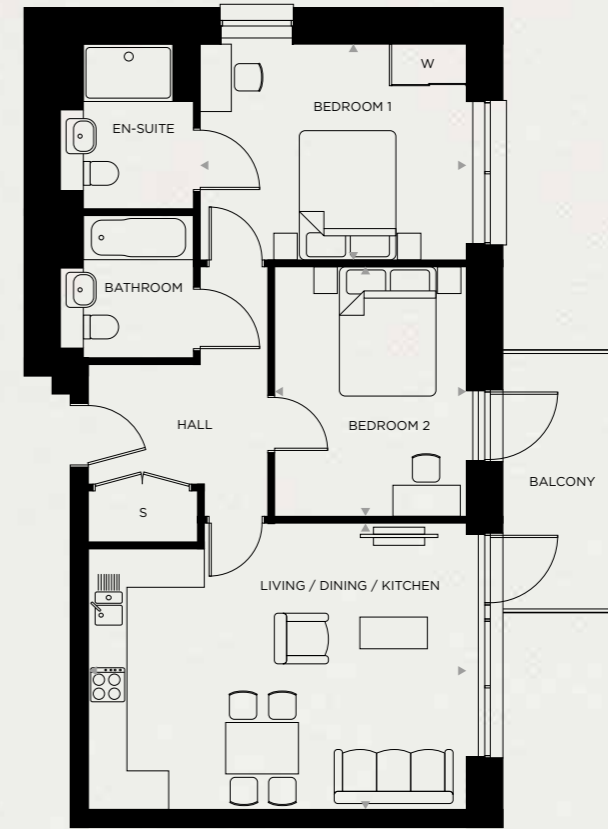
PLOT TYPE H | APARTMENT NO. 155

LIVING / DINING / KITCHEN	5.35 m	x	5.05 m	17'6"	x	16'6"
BEDROOM	5.87 m	x	3.05 m	19'3"	x	10'0"
INTERNAL AREA	57.3 sq m		617 sq ft			



KEY — S: Store / W: Wardrobe

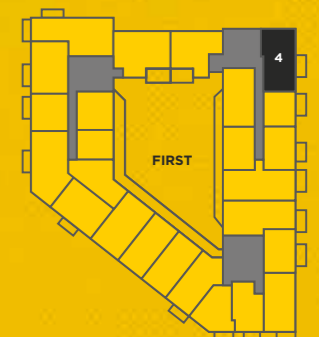
Floorplans are not to scale and are indicative only. Location of windows, doors, bathroom fittings, kitchen units and appliances may differ. Dimensions given are approximate and should not be used to order carpets or furniture. Balcony, patio, winter garden or terrace sizes and locations may differ from those illustrated.



TWO BEDROOM APARTMENT

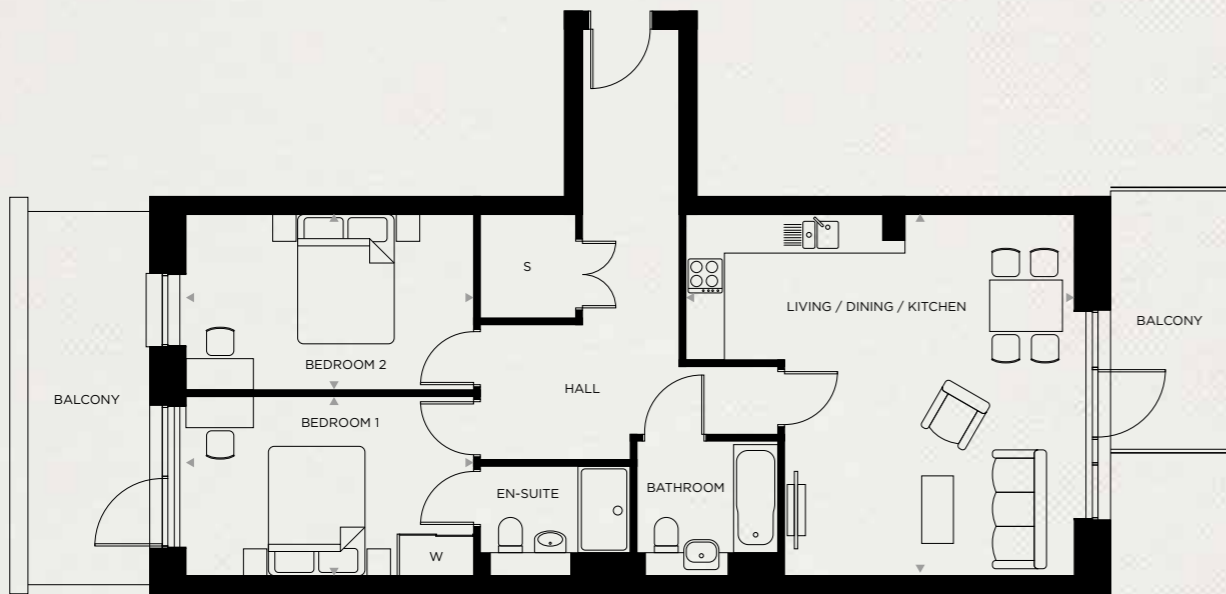
PLOT TYPE ABs | APARTMENT NO. 4 11 18

LIVING / DINING / KITCHEN	5.86 m	x	4.06 m	19'2"	x	13'3"
BEDROOM 1	4.14 m	x	3.38 m	13'6"	x	11'1"
BEDROOM 2	3.90 m	x	2.99 m	12'8"	x	9'8"
INTERNAL AREA	72.4 sq m		779 sq ft			



KEY — S: Store / W: Wardrobe

Floorplans are not to scale and are indicative only. Location of windows, doors, bathroom fittings, kitchen units and appliances may differ. Dimensions given are approximate and should not be used to order carpets or furniture. Balcony, patio, winter garden or terrace sizes and locations may differ from those illustrated.



TWO BEDROOM APARTMENT

PLOT TYPE ACs | APARTMENT NO. 7 14

LIVING / DINING / KITCHEN	6.07 m	x	5.62 m	19'9"	x	18'4"
BEDROOM 1	4.48 m	x	2.80 m	14'7"	x	9'2"
BEDROOM 2	4.48 m	x	2.72 m	14'7"	x	8'9"
INTERNAL AREA	82.1 sq m		884 sq ft			

KEY — S: Store / W: Wardrobe

Floorplans are not to scale and are indicative only. Location of windows, doors, bathroom fittings, kitchen units and appliances may differ. Dimensions given are approximate and should not be used to order carpets or furniture. Balcony, patio, winter garden or terrace sizes and locations may differ from those illustrated.



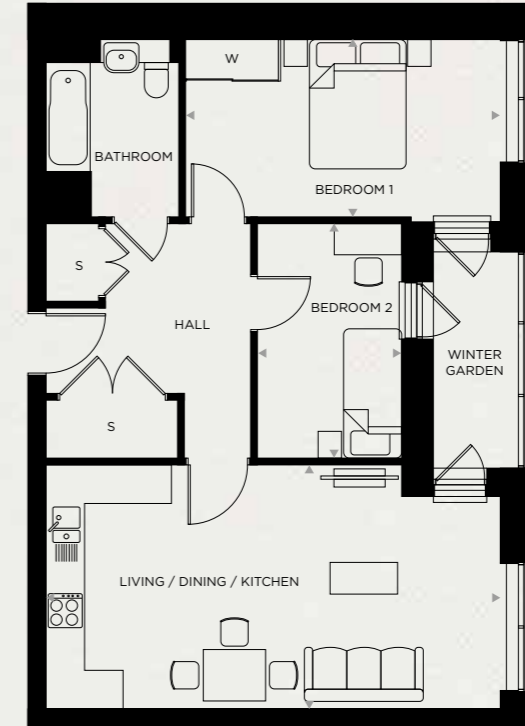
TWO BEDROOM APARTMENT

PLOT TYPE AD | APARTMENT NO. 10

LIVING / DINING / KITCHEN	7.22 m	x	4.75 m	23'7"	x	15'6"
BEDROOM 1	3.59 m	x	3.12 m	11'7"	x	10'2"
BEDROOM 2	4.18 m	x	2.89 m	13'7"	x	9'5"
INTERNAL AREA	76.2 sq m		820 sq ft			

KEY — S: Store / W: Wardrobe

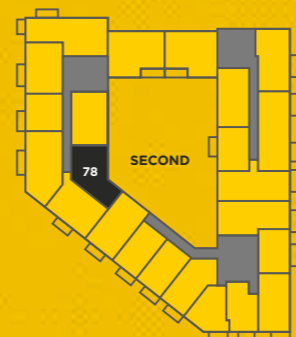
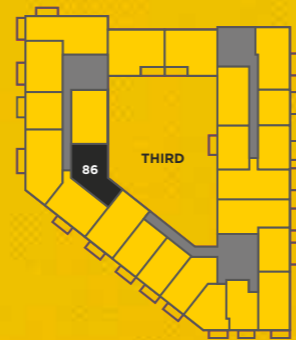
Floorplans are not to scale and are indicative only. Location of windows, doors, bathroom fittings, kitchen units and appliances may differ. Dimensions given are approximate and should not be used to order carpets or furniture. Balcony, patio, winter garden or terrace sizes and locations may differ from those illustrated.



TWO BEDROOM APARTMENT

PLOT TYPE AG | APARTMENT NO. 78 86

LIVING / DINING / KITCHEN	7.10 m	x	3.12 m	23'3"	x	10'2"
BEDROOM 1	4.61 m	x	3.03 m	15'1"	x	9'9"
BEDROOM 2	3.57 m	x	2.30 m	11'7"	x	7'5"
INTERNAL AREA	65.6 sq m		706 sq ft			



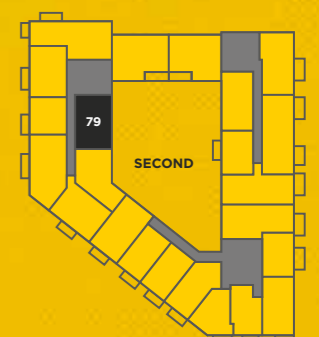
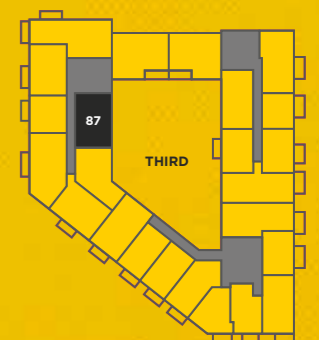
KEY — S: Store / W: Wardrobe

Floorplans are not to scale and are indicative only. Location of windows, doors, bathroom fittings, kitchen units and appliances may differ. Dimensions given are approximate and should not be used to order carpets or furniture. Balcony, patio, winter garden or terrace sizes and locations may differ from those illustrated.

TWO BEDROOM APARTMENT

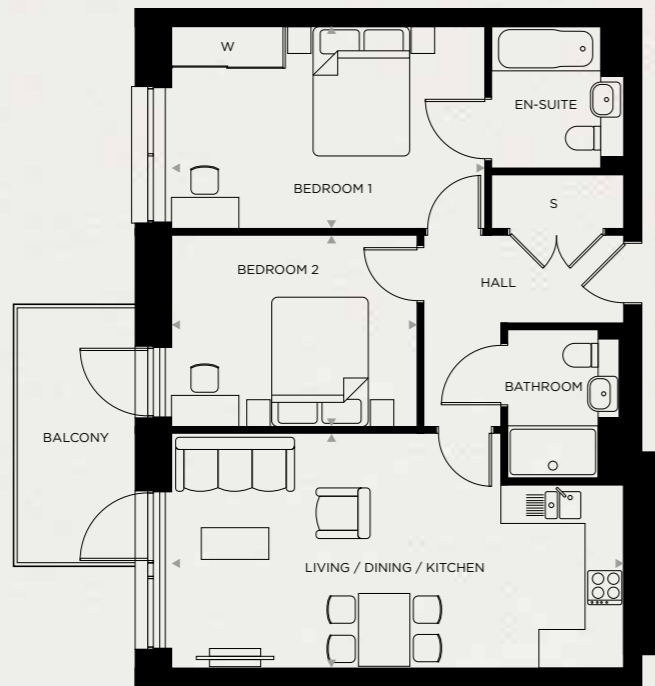
PLOT TYPE AE | APARTMENT NO. 79 87

LIVING / DINING / KITCHEN	7.07 m	x	3.81 m	23'2"	x	12'5"
BEDROOM 1	4.90 m	x	2.79 m	16'1"	x	9'2"
BEDROOM 2	3.66 m	x	2.28 m	12'0"	x	7'5"
INTERNAL AREA	67.3 sq m		724 sq ft			



KEY — S: Store / W: Wardrobe

Floorplans are not to scale and are indicative only. Location of windows, doors, bathroom fittings, kitchen units and appliances may differ. Dimensions given are approximate and should not be used to order carpets or furniture. Balcony, patio, winter garden or terrace sizes and locations may differ from those illustrated.



TWO BEDROOM APARTMENT

PLOT TYPE X | APARTMENT NO. 68 70 75 83

LIVING / DINING / KITCHEN	7.05 m	x	3.67 m	23'1"	x	12'0"
BEDROOM 1	4.88 m	x	3.15 m	16'0"	x	10'3"
BEDROOM 2	3.82 m	x	2.99 m	12'5"	x	9'8"
INTERNAL AREA	70.6 sq m		760 sq ft			

KEY — S: Store / W: Wardrobe

Floorplans are not to scale and are indicative only. Location of windows, doors, bathroom fittings, kitchen units and appliances may differ. Dimensions given are approximate and should not be used to order carpets or furniture. Balcony, patio, winter garden or terrace sizes and locations may differ from those illustrated.



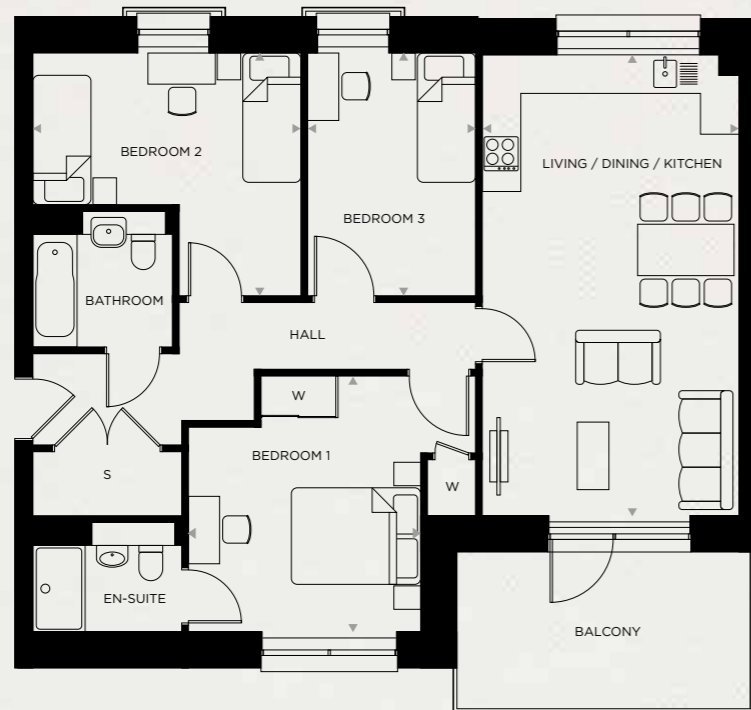
TWO BEDROOM APARTMENT

PLOT TYPE A1s | APARTMENT NO. 81

LIVING / DINING / KITCHEN	5.91 m	x	4.08 m	19'4"	x	13'4"
BEDROOM 1	4.09 m	x	3.32 m	13'4"	x	10'9"
BEDROOM 2	3.61 m	x	2.87 m	11'8"	x	9'4"
INTERNAL AREA	74.1 sq m		798 sq ft			

KEY — S: Store / W: Wardrobe

Floorplans are not to scale and are indicative only. Location of windows, doors, bathroom fittings, kitchen units and appliances may differ. Dimensions given are approximate and should not be used to order carpets or furniture. Balcony, patio, winter garden or terrace sizes and locations may differ from those illustrated.



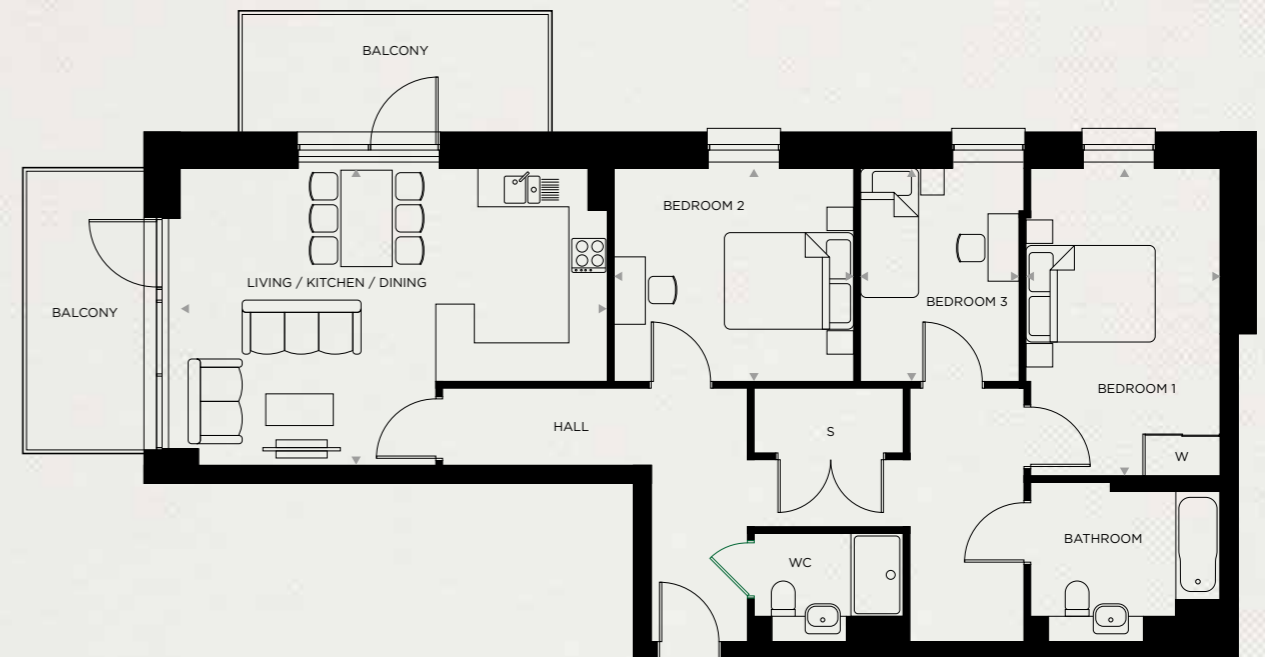
THREE BEDROOM APARTMENT

PLOT TYPE AZ | APARTMENT NO. 17 24 80 88

LIVING / DINING / KITCHEN	7.22 m	x	4.00 m	23'7"	x	13'1"
BEDROOM 1	3.99 m	x	3.63 m	13'1"	x	11'9"
BEDROOM 2	4.18 m	x	3.77 m	13'7"	x	12'4"
BEDROOM 3	3.77 m	x	2.62 m	12'4"	x	8'6"
INTERNAL AREA	90.4 sq m		973 sq ft			

KEY — S: Store / W: Wardrobe

Floorplans are not to scale and are indicative only. Location of windows, doors, bathroom fittings, kitchen units and appliances may differ. Dimensions given are approximate and should not be used to order carpets or furniture. Balcony, patio, winter garden or terrace sizes and locations may differ from those illustrated.



THREE BEDROOM APARTMENT

PLOT TYPE AVs | APARTMENT NO. 69 82

LIVING / DINING / KITCHEN	6.64 m	x	4.63 m	21'8"	x	15'2"
BEDROOM 1	4.78 m	x	2.96 m	15'7"	x	9'8"
BEDROOM 2	3.73 m	x	3.33 m	12'2"	x	10'9"
BEDROOM 3	3.34 m	x	2.55 m	10'10"	x	8'4"
INTERNAL AREA	99.0 sq m		1066 sq ft			

KEY — S: Store / W: Wardrobe

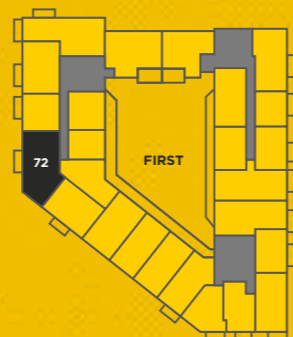
Floorplans are not to scale and are indicative only. Location of windows, doors, bathroom fittings, kitchen units and appliances may differ. Dimensions given are approximate and should not be used to order carpets or furniture. Balcony, patio, winter garden or terrace sizes and locations may differ from those illustrated.



THREE BEDROOM APARTMENT

PLOT TYPE AW | APARTMENT NO. 72

LIVING / DINING / KITCHEN	7.05 m	x	5.60 m	23'1"	x	18'4"
BEDROOM 1	4.65 m	x	3.15 m	15'3"	x	10'3"
BEDROOM 2	3.53 m	x	3.36 m	11'6"	x	11'0"
BEDROOM 3	3.17 m	x	2.62 m	10'4"	x	8'6"
INTERNAL AREA	90.8 sq m		977 sq ft			



KEY — S: Store / W: Wardrobe

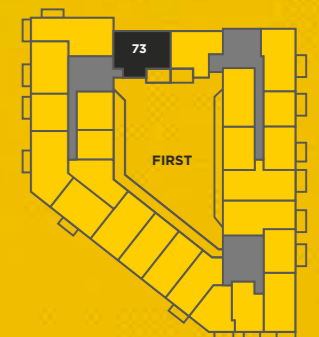
Floorplans are not to scale and are indicative only. Location of windows, doors, bathroom fittings, kitchen units and appliances may differ. Dimensions given are approximate and should not be used to order carpets or furniture. Balcony, patio, winter garden or terrace sizes and locations may differ from those illustrated.



THREE BEDROOM APARTMENT

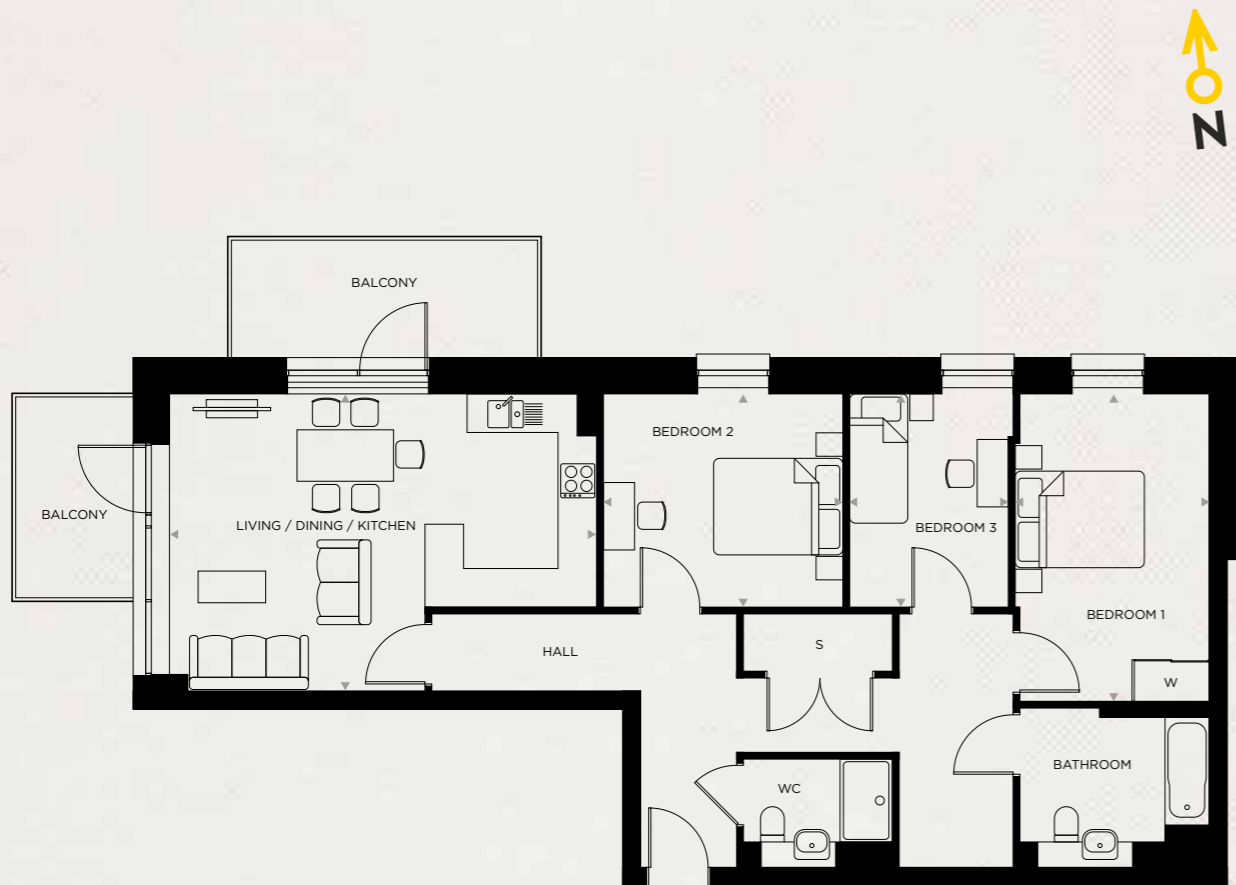
PLOT TYPE AY | APARTMENT NO. 73

LIVING / DINING / KITCHEN	7.22 m	x	3.95 m	23'7"	x	12'10"
BEDROOM 1	4.33 m	x	2.59 m	14'2"	x	8'5"
BEDROOM 2	3.62 m	x	3.60 m	11'9"	x	11'8"
BEDROOM 3	3.95 m	x	2.26 m	12'10"	x	7'4"
INTERNAL AREA	87.4 sq m		941 sq ft			



KEY — S: Store / W: Wardrobe

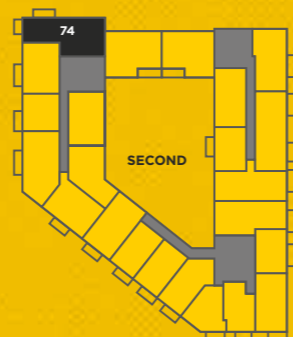
Floorplans are not to scale and are indicative only. Location of windows, doors, bathroom fittings, kitchen units and appliances may differ. Dimensions given are approximate and should not be used to order carpets or furniture. Balcony, patio, winter garden or terrace sizes and locations may differ from those illustrated.



THREE BEDROOM APARTMENT

PLOT TYPE BVs | APARTMENT NO. 74

LIVING / DINING / KITCHEN	6.64 m	x	4.63 m	21'8"	x	15'2"
BEDROOM 1	4.78 m	x	2.96 m	15'7"	x	9'7"
BEDROOM 2	3.73 m	x	3.33 m	12'2"	x	10'9"
BEDROOM 3	3.33 m	x	2.55 m	10'9"	x	8'4"
INTERNAL AREA	99.0 sq m		1066 sq ft			



KEY — S: Store / W: Wardrobe

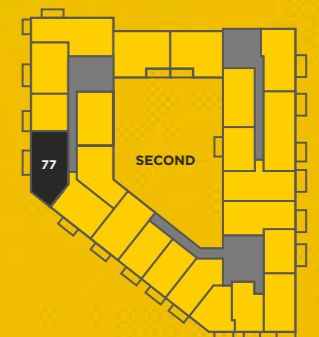
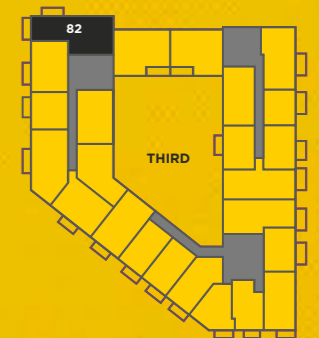
Floorplans are not to scale and are indicative only. Location of windows, doors, bathroom fittings, kitchen units and appliances may differ. Dimensions given are approximate and should not be used to order carpets or furniture. Balcony, patio, winter garden or terrace sizes and locations may differ from those illustrated.



THREE BEDROOM APARTMENT

PLOT TYPE AXs | APARTMENT NO. 77 85

LIVING / DINING / KITCHEN	7.05 m	x	5.51 m	23'1"	x	18'1"
BEDROOM 1	5.11 m	x	3.21 m	16'8"	x	10'5"
BEDROOM 2	3.53 m	x	3.40 m	11'6"	x	11'1"
BEDROOM 3	3.34 m	x	3.21 m	10'9"	x	10'5"
INTERNAL AREA	89.3 sq m		961 sq ft			



KEY — S: Store / W: Wardrobe

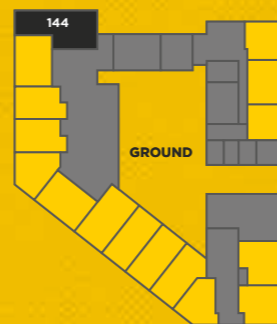
Floorplans are not to scale and are indicative only. Location of windows, doors, bathroom fittings, kitchen units and appliances may differ. Dimensions given are approximate and should not be used to order carpets or furniture. Balcony, patio, winter garden or terrace sizes and locations may differ from those illustrated.



THREE BEDROOM APARTMENT

PLOT TYPE AQ | APARTMENT NO. 144

LIVING / DINING/ KITCHEN	6.13 m	x	4.63 m	20'1"	x	15'2"
BEDROOM 1	5.16 m	x	2.79 m	16'9"	x	9'2"
BEDROOM 2	3.86m	x	3.06 m	12'6"	x	10'0"
BEDROOM 3	3.86m	x	2.35 m	12'7"	x	7'7"
INTERNAL AREA	99.0 sq m		1066 sq ft			



KEY — S: Store / W: Wardrobe

Floorplans are not to scale and are indicative only. Location of windows, doors, bathroom fittings, kitchen units and appliances may differ. Dimensions given are approximate and should not be used to order carpets or furniture. Balcony, patio, winter garden or terrace sizes and locations may differ from those illustrated.



Computer generated image is indicative only.





NETWORK HOMES

Award-winning Network Homes is one of the strongest housing associations. We love to build and we take great pride in the homes we deliver and manage. We are one of the UK's leading providers of quality homes with a portfolio of 20,000 properties.

We build prestigious homes for market sale and Shared Ownership (part rent, part buy). We operate commercially but our profits are reinvested back into building more homes and offering a first class service to our customers.

We take pride in providing an impressive specification which, coupled with sustainable design features, means our homes are ideal for modern living. We've been dedicated to doing this for over 40 years, since we were formed in 1974. Without a good home it is difficult for anyone to feel comfortable, happy or secure in their life. We believe everyone needs a good home, because good homes make everything possible.



Kilburn Quarter



Millharbour



All computer generated images (CGIs) used in these particulars are for illustrative purposes only, are not intended to provide an actual forecast or impression of the measurements, dimensions, layouts, placements, context and/or finishes of the buildings premises or landscaping within the development, and should not be relied upon as true or accurate. These brief particulars have been prepared and are intended as a guide to supplement an inspection or survey and do not form part of any offer or contract. Their accuracy is not guaranteed. They contain statement of opinion and in some instances we have relied upon information supplied by others. This brochure includes imagery for illustrative purposes only. The map is not to scale. Design elements and specification details may change without notice. You should verify the particulars on your visit to the site and with the sales agent. The particulars do not obviate the need for a survey and all the appropriate enquiries. Accordingly, there shall be no liability as a result of any effort or omission in the particulars or information given. All information believed to be correct at time of print. Travel times are approximate only and are subject to change. July 2020.

JOIN THE EVOLUTION



JOIN THE EVOLUTION



Because good homes make everything possible