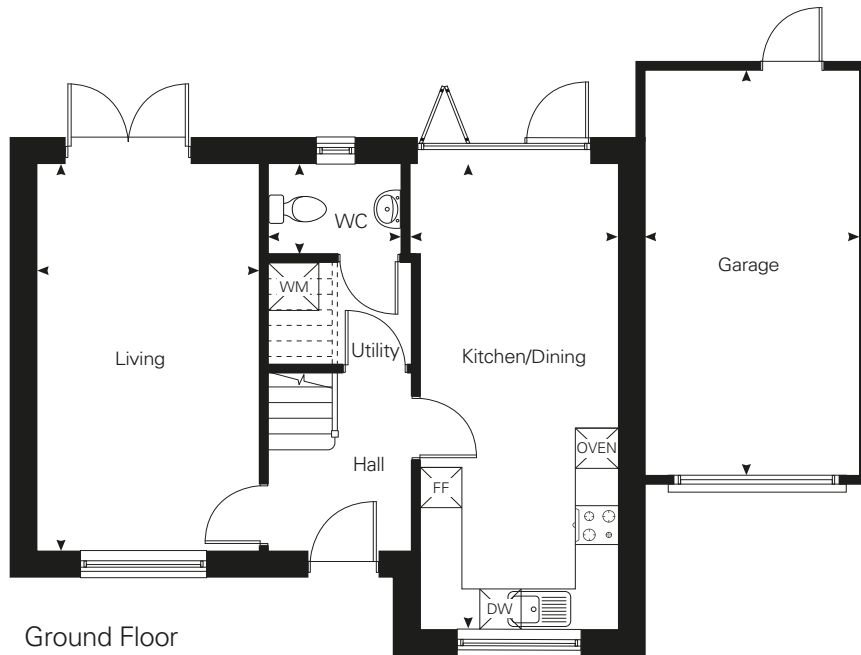
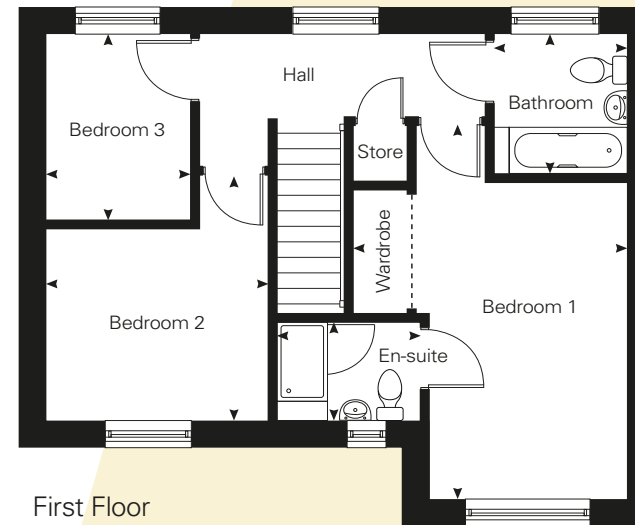


Dunham Grange

Whitwell • Plots 15, 25, 26 and 27



Ground Floor



First Floor

Disclaimer: Room dimensions if shown are subject to change and are for guidance only. Whilst we endeavour to make our property details accurate and reliable these particulars are set out as a general outline only for the guidance of intended purchasers or lessees and do not constitute as a full or part offer or contract. Other details are given without responsibility and intending purchasers or tenants should not rely on them as statements or representations of fact but must satisfy themselves by inspection or otherwise as to the correctness of them. The purchaser is advised to obtain verification from their Solicitor or Surveyor to their own satisfaction.

Dimensions

	METRIC	IMPERIAL
Kitchen/Dining	6.94m x 3.04m	22'9" x 9'11"
Living	5.81m x 3.25m	19'0" x 10'7"
Garage	5.86m x 3.16m	19'2" x 10'4"

	METRIC	IMPERIAL
Bedroom 1	4.74m x 3.98m	15'6" x 13'0"
Bedroom 2	3.71m x 3.25m	12'2" x 10'7"
Bedroom 3	2.82m x 2.14m	9'3" x 7'0"