



Discover canalside living with this beautiful 3-bed apartment in Limehouse

Available through Shared Ownership

£157,500 for 30% share. Full Market Value £525,000.

George Hilsdon Court, 18 Frank Whipple Place, London, E14. Leasehold (119 years remaining).

savills

Enjoy the Canalside living at George Hilsdon Court

A well-presented 3-bedroom apartment set on the second floor overlooking beautiful greenery.

- 30% share available to purchase
- A bright and spacious kitchen
- A separate reception room with an exit to the private terrace
- Three double bedrooms

Enjoy easy travel*

Residents will benefit from great travel connections with Limehouse DLR station only 7 min walk away, Mile End station 18 min walk away and Shadwell Overground station 23 min walk from the apartment. From George Hilsdon Court reach:

- Canary Wharf in 13 mins
- Bank in 15 mins
- Stratford in 22 mins
- Liverpool Street in 24 mins
- Westminster in 32 mins

Tenure: Leasehold (119 years remaining)

Local Authority: Tower Hamlets

Energy Performance

EPC Rating = B

Viewings

All viewings will be conducted by the owner and are strictly by prior arrangement through Savills Shared Ownership Office.

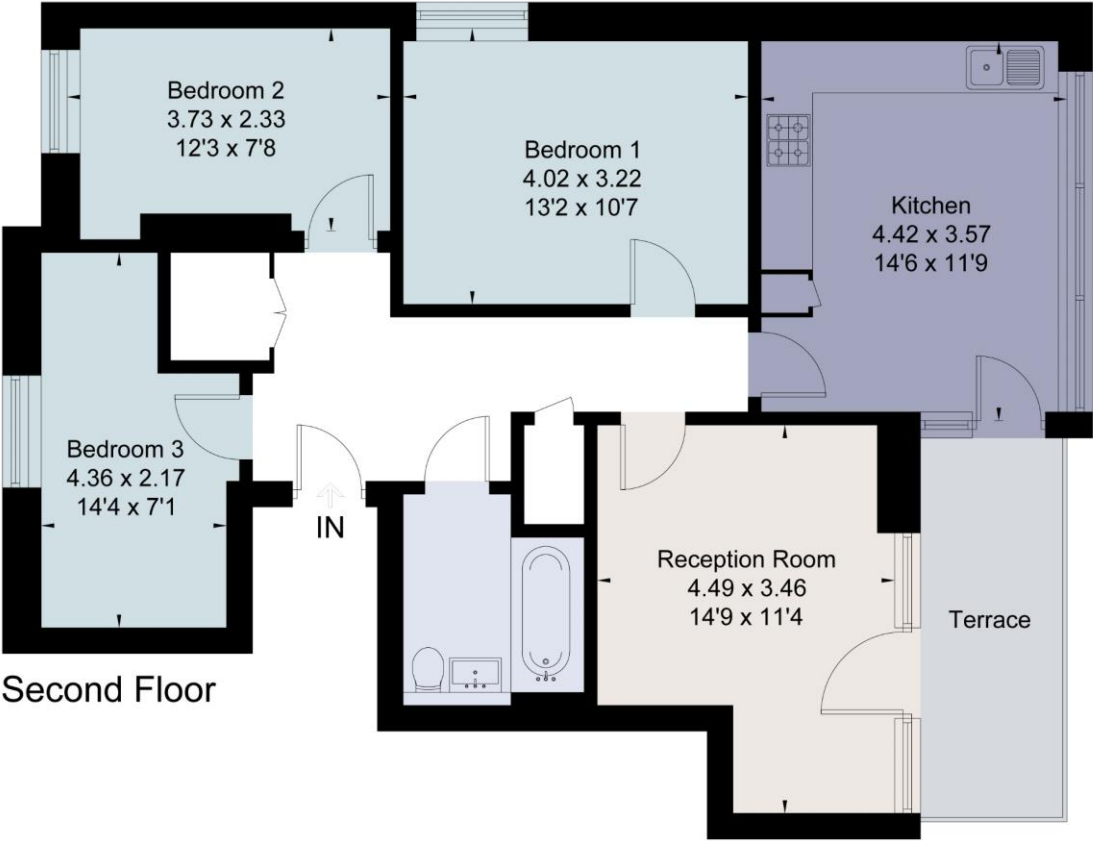
Telephone: +44 (0) 20 7704 5618.

*All travel times are approximate and have been taken from Google Maps





Approximate Area = 79.9 sq m / 860 sq ft
Terrace Area = 7.3 sq m / 78 sq ft
For identification only. Not to scale.
© Fourwalls



Second Floor

Surveyed and drawn in accordance with the International Property Measurement Standards (IPMS 2: Residential)
fourwalls-group.com 282043

Score	Energy rating	Current	Potential
92+	A		
81-91	B	84 B	84 B
69-80	C		
55-68	D		
39-54	E		
21-38	F		
1-20	G		

Important Notice Savills, its clients and any joint agents give notice that 1: They are not authorised to make or give any representations or warranties in relation to the property either here or elsewhere, either on their own behalf or on behalf of their client or otherwise. They assume no responsibility for any statement that may be made in these particulars. These particulars do not form part of any offer or contract and must not be relied upon as statements or representations of fact. 2: Any areas, measurements or distances are approximate. The text, photographs and plans are for guidance only and are not necessarily comprehensive. It should not be assumed that the property has all necessary planning, building regulation or other consents and Savills have not tested any services, equipment or facilities. Purchasers must satisfy themselves by inspection or otherwise. 20210714DNPT

