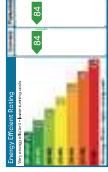
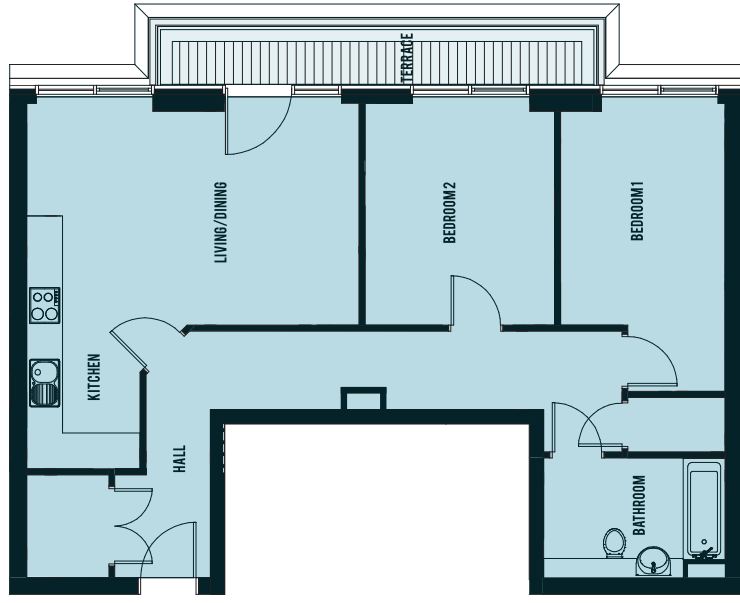
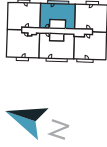
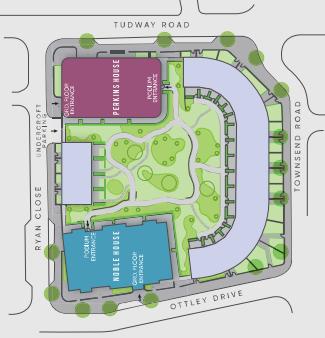


606 NOBLE HOUSE, 48 OTTLEY DRIVE, SE3 9GF
TWO BEDROOM APARTMENT

TOTAL INTERNAL AREA: 76 m² | SIXTH FLOOR

LIVING / DINING	3.7M	X	5.5M
KITCHEN	1.9M	X	4.2M
BEDROOM 1	2.7M	X	4.8M
BEDROOM 2	3.1M	X	3.7M



1 NOBLE HOUSE, 48 OTTLEY DRIVE, SE3 9GF
THREE BEDROOM APARTMENT (WHEELCHAIR ADAPTABLE)

TOTAL INTERNAL AREA: 101 m² | GROUND FLOOR

LIVING / DINING	3.4M	X	6.1M
KITCHEN	3.4M	X	2.4M
BEDROOM 1	3.6M	X	4.2M
BEDROOM 2	3M	X	4.4M
BEDROOM 3	2.6M	X	4.4M

