



# MODERN CITY LIVING



This is a computer generated image. Materials, design and landscaping may differ from those illustrated.

FEATURE 17  
**SCENE / 2**  
— WALTHAMSTOW —

[www.countrysideproperties.com/feature17](http://www.countrysideproperties.com/feature17)  
[feature17@cpplc.com](mailto:feature17@cpplc.com)  
020 3944 9707

Marketing Suite open daily from 10am – 5pm.  
Wood Street, Walthamstow, London, E17 3HX (SAT NAV: E17 3HX)

Every care has been taken in the preparation of this brochure. The details contained therein are for guidance only and should not be relied upon as exactly describing any of the particular material illustrated or written by any order under the Consumer Protection from Unfair Trading Regulations 2008. This information does not constitute a contract, part of a contract or a warranty. Countryside operates a programme of continuous product development. All computer generated images are indicative and may be subject to change. All internal imagery depicts previous Countryside developments, specification may vary from that shown. All time and distances quoted are approximate and taken from either google.co.uk or nationalrail.co.uk. April 2021.

  
**COUNTRYSIDE**  
Places People Love

FEATURE 17  
**SCENE / 2**  
— WALTHAMSTOW —

**TURNER HOUSE / THIRD FLOOR**

FLOORPLANS

PRESENTED BY

  
**COUNTRYSIDE**  
Places People Love

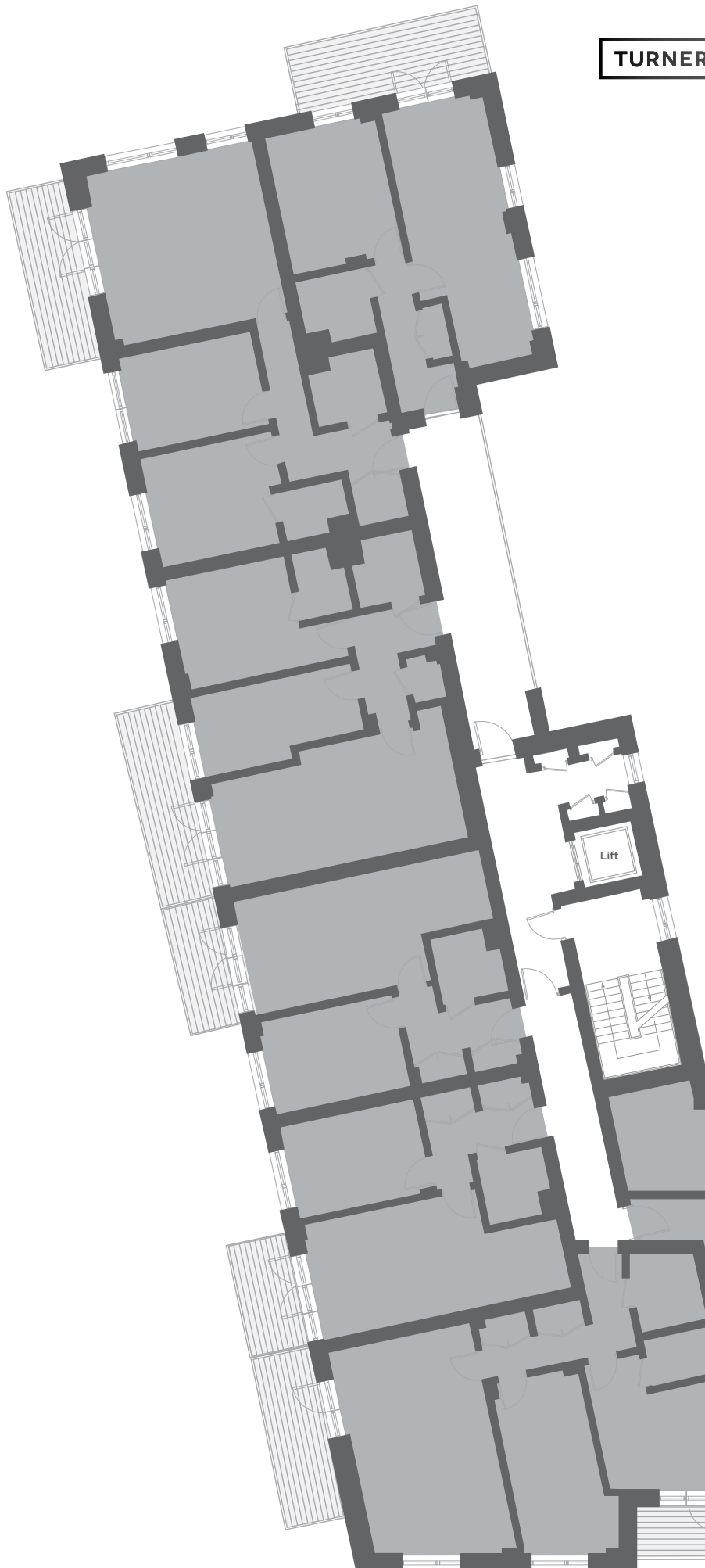
**TURNER HOUSE / THIRD FLOOR**

PLACES PEOPLE LOVE

FEATURE 17

**SCENE 2**

WALTHAMSTOW



**301 / 2 BED APARTMENT**

LIVING/DINING/KITCHEN AREA	5.94M X 4.49M	19'6" X 14'9"
MASTER BEDROOM	3.31M X 3.80M	10'10" X 12'6"
BEDROOM 2	3.31M X 3.51M	10'10" X 11'6"
<b>TOTAL INTERNAL AREA</b>	<b>72 SQM</b>	<b>775 SQFT</b>
BALCONY	1.58M X 5.38M	5'2" X 17'8"

**303 / 2 BED APARTMENT**

LIVING/DINING/KITCHEN AREA	3.67M X 6.46M	12'0" X 21'2"
MASTER BEDROOM	2.91M X 5.27M	9'7" X 17'4"
BEDROOM 2	2.65M X 4.12M	8'8" X 13'6"
<b>TOTAL INTERNAL AREA</b>	<b>64 SQM</b>	<b>688.9 SQFT</b>
BALCONY	1.5M X 5.82M	4'11" X 19'1"

**305 / 1 BED APARTMENT**

LIVING/DINING/KITCHEN AREA	6.70M X 3.55M	22'0" X 11'8"
MASTER BEDROOM	5.23M X 3.20M	17'2" X 10'6"
<b>TOTAL INTERNAL AREA</b>	<b>52 SQM</b>	<b>559.7 SQFT</b>
BALCONY	1.51M X 3.99M	4'11" X 13'1"

**332 / 2 BED APARTMENT**

LIVING/DINING/KITCHEN AREA	4.79M X 5.62M	15'9" X 18'5"
MASTER BEDROOM	4.50M X 3.60M	14'9" X 11'10"
BEDROOM 2	3.26M X 4.38M	10'8" X 14'4"
<b>TOTAL INTERNAL AREA</b>	<b>76 SQM</b>	<b>818.1 SQFT</b>
BALCONY	1.51M X 5.3M	4'11" X 17'5"

**334 / 1 BED APARTMENT**

LIVING/DINING/KITCHEN AREA	6.79M X 3.72M	22'3" X 12'3"
MASTER BEDROOM	5.00M X 3.20M	16'5" X 10'6"
<b>TOTAL INTERNAL AREA</b>	<b>50 SQM</b>	<b>538.2 SQFT</b>
BALCONY	1.58M X 3.39M	5'2" X 11'2"

**302 / 1 BED APARTMENT**

LIVING/DINING/KITCHEN AREA	5.04M X 4.99M	16'6" X 16'5"
MASTER BEDROOM	3.35M X 4.11M	11'0" X 13'6"
<b>TOTAL INTERNAL AREA</b>	<b>50 SQM</b>	<b>538.2 SQFT</b>
BALCONY	1.5M X 5.32M	4'11" X 17'5"

**304 / 2 BED APARTMENT**

LIVING/DINING/KITCHEN AREA	7.55M X 4.00M	24'9" X 13'2"
MASTER BEDROOM	2.90M X 3.61M	9'6" X 11'10"
BEDROOM 2	4.50M X 2.75M	14'9" X 9'0"
<b>TOTAL INTERNAL AREA</b>	<b>73 SQM</b>	<b>785.8 SQFT</b>
BALCONY	1.51M X 10.19M	4'11" X 33'5"

**306 / 2 BED APARTMENT**

LIVING/DINING/KITCHEN AREA	6.73M X 3.63M	22'1" X 11'11"
MASTER BEDROOM	5.86M X 2.75M	19'3" X 9'0"
BEDROOM 2	2.77M X 4.15M	9'1" X 13'7"
<b>TOTAL INTERNAL AREA</b>	<b>74 SQM</b>	<b>796.5 SQFT</b>
BALCONY	1.58M X 6.51M	5'2" X 21'4"

**333 / 1 BED APARTMENT**

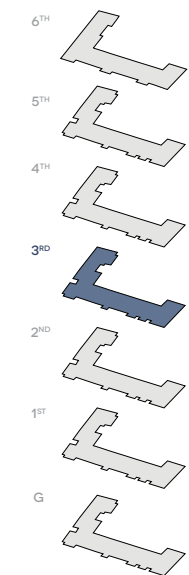
LIVING/DINING/KITCHEN AREA	6.79M X 3.72M	22'3" X 12'3"
MASTER BEDROOM	5.00M X 3.20M	16'5" X 10'6"
<b>TOTAL INTERNAL AREA</b>	<b>50 SQM</b>	<b>538.2 SQFT</b>
BALCONY	1.51M X 3.63M	4'11" X 11'11"

**335 / 2 BED APARTMENT**

LIVING/DINING/KITCHEN AREA	4.76M X 6.13M	15'7" X 20'1"
MASTER BEDROOM	4.49M X 2.75M	14'9" X 9'0"
BEDROOM 2	3.01M X 4.13M	9'11" X 13'7"
<b>TOTAL INTERNAL AREA</b>	<b>73 SQM</b>	<b>785.8 SQFT</b>
BALCONY	1.58M X 5.27M	5'2" X 17'4"



FLOOR INDICATOR



- 1 BED APARTMENT
- 2 BED APARTMENT
- 3 BED APARTMENT
- UNRELEASED PLOTS

W - Wardrobe    Cup'd - Cupboard  
U Cup'd - Utility Cupboard

Please speak to a sales consultant for further details on landscaping

These floorplans and computer generated images are indicative only and depicts a typical apartment, some properties may vary significantly from that shown. All sizes are approximate with maximum finished dimensions. Countryside operates a policy of continuous product development and all room layouts may be subject to minor modifications. Kitchen and bathroom layouts are indicative. Radiator locations are not indicated. Floorplans are not shown to scale. Plot specification, internal and external finishes, dimensions, landscaping and differences to plots should be checked with a Sales Consultant before reservation. Countryside reserves the right to amend specifications as necessary. The balcony balustrade treatment often alternates between railing and brick. These dimensions are approximate figures and subject to change following specialist input from the metalwork sub-contractor. Kitchen designs may vary, please speak to a sales consultant for specific kitchen layouts.