



CENTRAL
SQUARE

AT COPLEY W7



CENTRAL
SQUARE
AT COPLEY W7

*Be part of one of London's
most exciting and dynamic
regeneration projects*



This is The Copley Story

Welcome to Central Square, the latest phase of Copley W7, and the heart of an exciting regeneration that is creating a series of beautifully interconnected neighbourhoods in Hanwell, just west of Ealing town centre. This new square, conveniently located adjacent to Castle Bar Park train station, will be

home to one- and two-bedroom apartments with balconies providing private outdoor space, set around an attractive landscaped square. Living here, you'll benefit from a host of brand new amenities including an on-site convenience store, a car club and a community centre.

Creating 6 new exciting neighbourhoods

The Copley regeneration has already been recognised for excellence, winning 'Best Conceptual Project' in the prestigious London Planning Awards for its original and creative vision, setting a new national standard for neighbourhood regeneration.

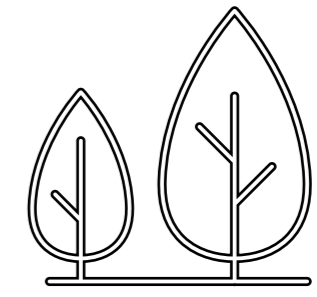
This part of London will also benefit from the arrival of Crossrail's Elizabeth Line, further strengthening the area's enviable transport links. It all makes Central Square one of West London's best placed new neighbourhoods for modern city living.



Central Square. The facts



22 mins
from
the City



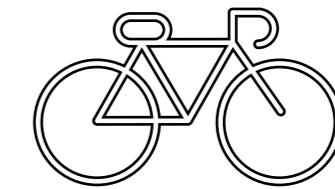
Landscaped square
and green spaces

Secure & covered
cycle parking

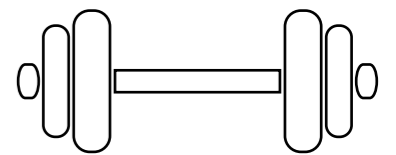
£100 million
award-winning neighbourhood regeneration



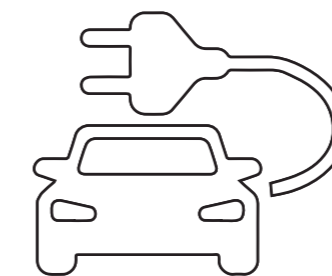
On-site
convenience store



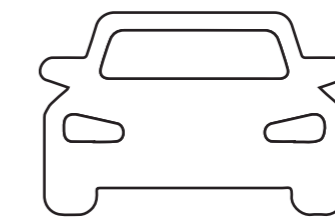
Brompton Bikes
for hire



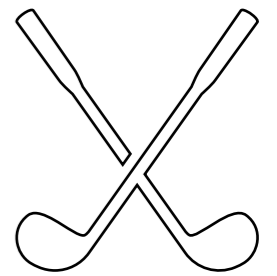
Gurnell Leisure Centre
4 minutes away



Electric car
charging points



Car club: cars to rent
by the hour or day

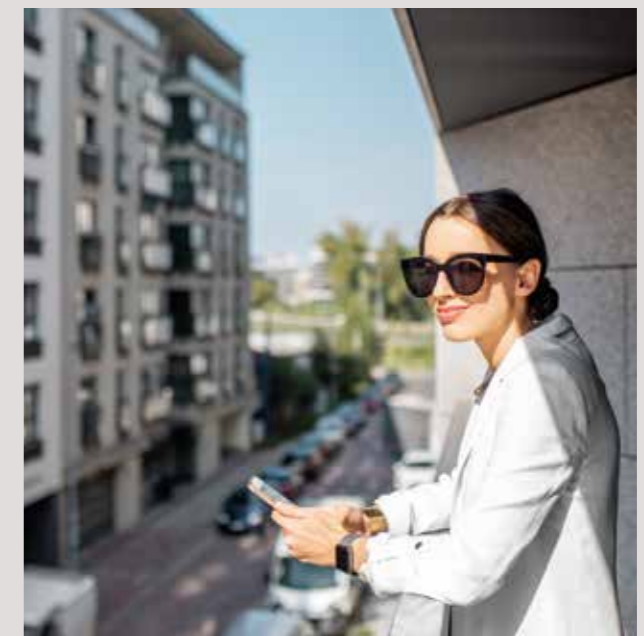


Perivale golf course
7 minutes away



The best in West London living reinvented

West London has long been a desirable location to live in the capital, with West Ealing and Ealing Broadway vibrant hubs for shopping and dining. Chic new enclave Dickens Yard brings 21st Century metropolitan style and a contemporary new street to Ealing's centre with fashion and furniture stores, new concept health and fitness clubs, and artisanal wine shop and bar, against a backdrop of Ealing's Conservation Area with its listed buildings from stunning church to fire station. Ealing is home to the eight-screen Ealing Picturehouse, while West London means you're in reach of some of the best national and international sports and leisure venues including Wembley Stadium, Twickenham Stadium, the SSE Arena and the O2 Shepherd's Bush Empire.



Stylish apartments for modern day living



Central Square is designed for how you live today, with light-filled space and an energy-efficiency focus. You will find layouts that feature dedicated working areas in the bedroom, giving you the flexibility not only to work from home but work effectively and comfortably too. In short, your home will be a place you will love to be in and come home to.



Sounds Original

A must-visit shop for any self-respecting record collector, specializing in top quality vinyl from the 1950s to the 1990s as well as music memorabilia. They are also happy to source any specific gaps in your collection.

www.soundsoriginal.co.uk

Independent thinking

From vinyl to vintage clothing and books to bouquets, the area has a fantastic array of independent and eclectic shops and boutiques for you to experience.



Frank and Salvi

This well-respected clothing and accessories boutique offers a collection of casual and smart pieces, mainly from British and European designers including shoes, accessories and jewellery.

www.frankandsalvi.com



Mooch

An award-winning gift shop with three stores in Ealing, Mooch offers an eclectic mix of carefully sourced jewellery, bags, scented candles, ceramics, toiletries, cushions, books, wallets, homewares, prints - and so much more!

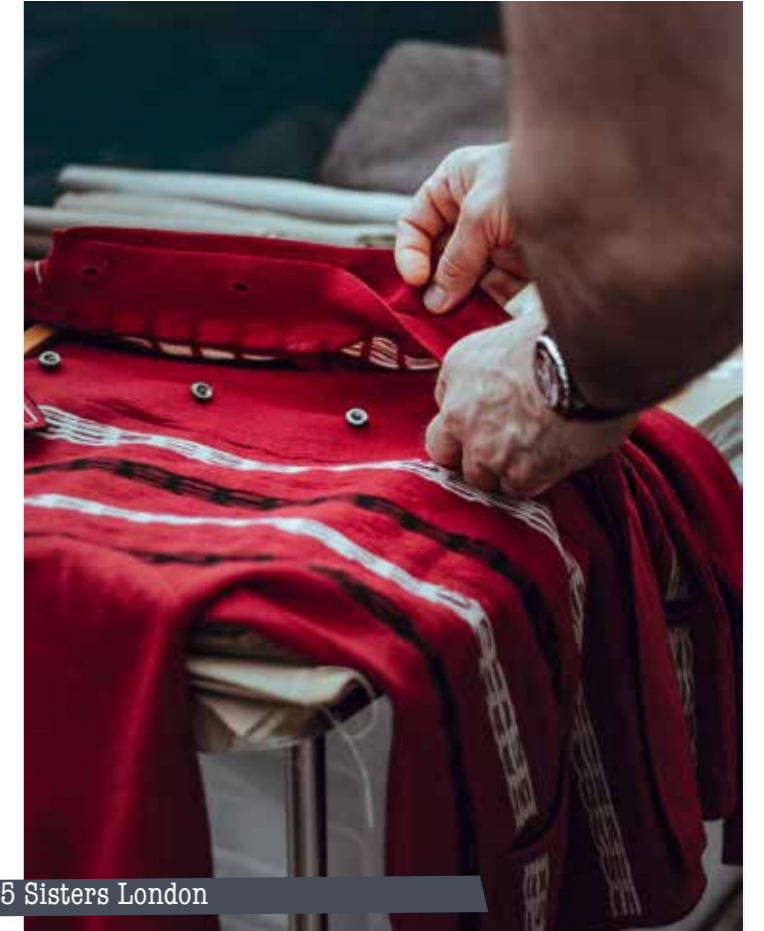
www.mooch-ealing.com



Blooms by Eberé

Not so much a florist as a floral boutique. Offering a great choice of carefully selected green and blooming plants, dish gardens, fruit & gourmet baskets and a full floral service for special occasions.

www.ealingflorist.co.uk



5 Sisters London

A vast cavern of a gift shop for all ages also offering homewares, garden accessories and vintage clothing downstairs. There's also the offer of hot drinks and cakes to complete the shopping experience.

www.facebook.com/5sisterslondon



Felix and Spear

This notable gallery exhibits Modern British and Post-War works of art and also represents a select number of notable and influential Contemporary artists. See their website for their full exhibition programme.

www.felixandspear.com



From café culture to fine dining

Whether you're exploring New Broadway or Ealing Broadway, on one of the many Thames riverside terraces nearby, or pushing the boat out at restaurants in the Michelin Guide, living at Central Square means you're well-located to try a host of new tasting adventures.

Franco Manca



Slow-rising sourdough pizzas, daily changing menu using Cantabrian and Neopolitan ingredients, enjoy with a Negroni in a New Broadway pizzeria that now sells its pizzas in Italy.
www.francomanca.co.uk

The Fox



A multi-winner of 'Pub of the Year' award, with an Outstanding Achievement Award for Good Beer Guide entry for 10 years, and serving up hearty cooked food, with an open fire to cosy up to in winter.
www.thefoxpub.co.uk

Limeyard



A Californian kitchen bringing chilled-out West Coast ambiance to Ealing High Street. Pop in for breakfast, lunch, dinner or after-6pm Lime Time for tequila cocktails.
www.limeyardrestaurants.com

City Barge



An historic 14th Century hostelry on Chiswick's picturesque Strand-On-The-Green, eat on the riverside terrace next to the fragrant herb garden, or in the beautifully paneled dining room with its quirky décor touches.
www.citybargechiswick.com

Urban Karahi



Olive magazine describes Urban Karahi as one of the borough's best restaurants with the best curries featuring a menu of contemporary Indian dining choices and atmospheric mood-lit water wall.
www.urbankarahi.com

W7 Emporium



Its tucked away feel, French style and courtyard garden have won the café loyal fans especially for its brunch. The eclectic venue brings a touch of the Med to W7 with delicious food and drinks.
www.facebook.com/w7emporium

No 17 Dickens Yard



An independent neighbourhood bar for all-day brunch at the weekend - or traditional Sunday roast, with post-work drinks served to a soundtrack of live DJs.
www.no17dickensyard.co.uk



Staying Active

Workouts & Wellbeing

Whether it's a spin studio or fitness session in gyms that feature boxing rings, live DJ sets, or interiors styled by nightclub designers, you can find it nearby. If you love to run, living at Copley Square means being in one of the greenest boroughs with Hanwell offering over eight square kilometres of parks and green spaces. Check out the sports facilities in parks too; Pitshanger Park has football pitches and adjacent rugby club.

Gurnell Leisure Centre, also half a mile away, has facilities from a 50m pool and leisure pool, to exercise studios and a 100+ station gym. There's a packed fitness class programme, and a Health Suite with steam room and sauna to unwind after your workout.



Tennis fans will find courts close at hand at Cuckoo Park and Pitshanger Park. Just half a mile away, West Middlesex Lawn Tennis Club is one of the friendliest in West London, welcoming new members from beginners to advanced.



Brent Valley Golf Club

A friendly club in Hanwell with an 18-hole golf course. Pitshanger and Perivale Park also offer golf courses, and Ealing and West Middlesex golf clubs are within easy reach.



Gunnersbury Park

One of the earliest and most beautiful Georgian villas built for Lord Burlington and inspired by masters Andrea Palladio and Inigo Jones, the romantic landscape of over 60 acres features gardens, ponds and fountains, and classical vistas.

The park's mansion is now a museum with panoramic views of the 186-acre park with its restored Orangery and Horseshoe Lake, Temple and Gothic ruins.

Green open spaces on your doorstep



Chiswick House



Ealing Common

A classic London Common offering approximately 47 acres of green space, Ealing Common is the perfect place to stroll, jog, horse-ride - or just relax. The Common hosts a range of open-air events from music, beer and summer festivals to funfairs and circuses.



The place to see seasons from spring cherry blossom in the Japanese Garden to the Arboretum's autumn colours. Walk the tree-top canopy for a birds-eye view and experience lush exotic plant-life in the indoor Rainforest.

Kew Gardens

Living at Central Square you can enjoy the open spaces and greenery of neighbouring Brent Valley Park, as well as walks alongside the historic Grand Union Canal and river Brent with their leafy towpaths.



Brent Valley Park & Grand Union Canal

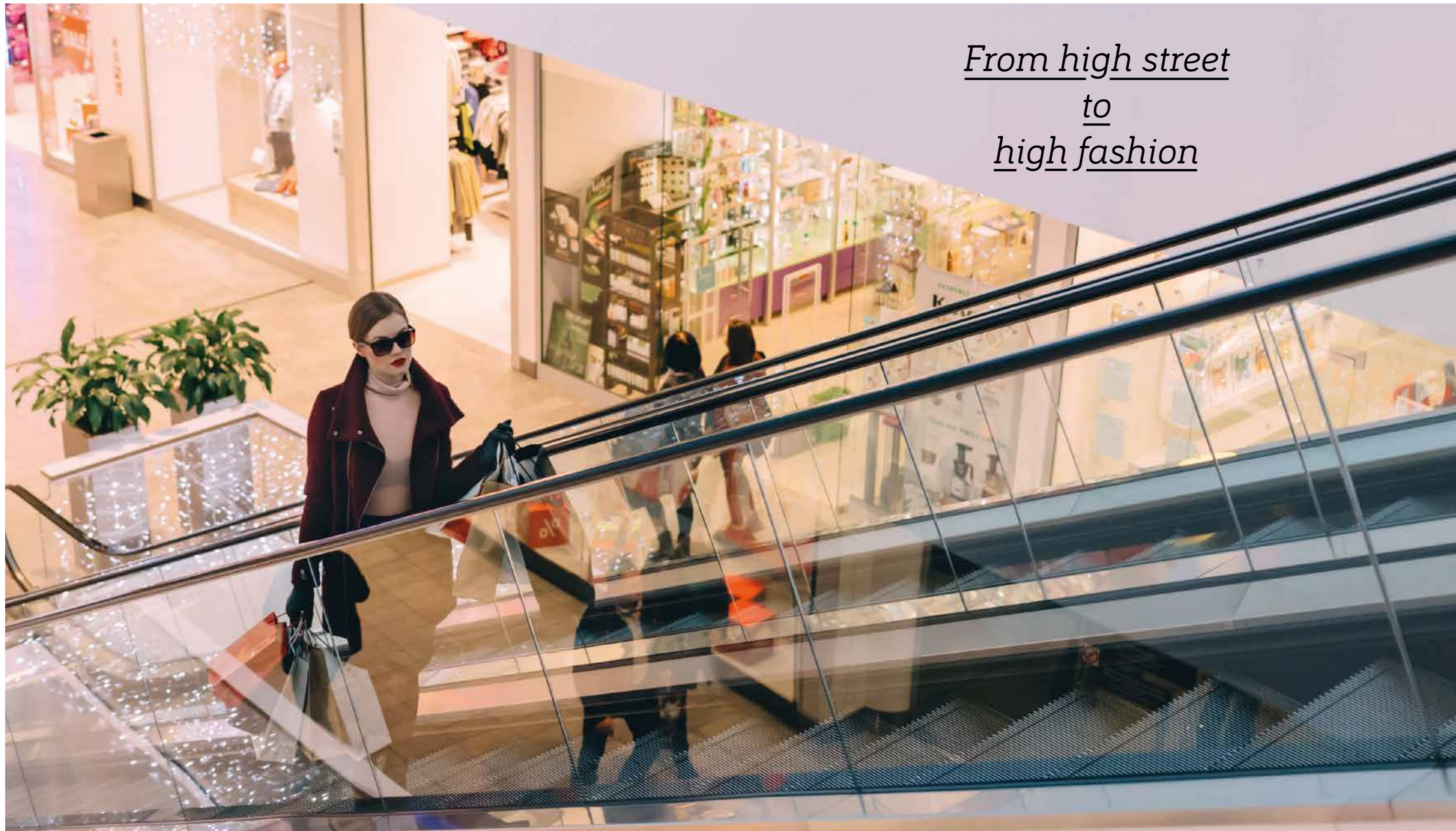


Brent River Park

Offering a wealth of nature, this large and curving natural landscape along the river includes Brent Meadow and Hanwell Meadows, Long Wood and a farm.



*From high street
to
high fashion*



Ealing

Ealing brings shopping and services conveniently together in its mall and on its wide thoroughfares. From barbers, banks, mobile phone stores to branches of high street names like Boots, H&M, Next, The Body Shop, M&S, Holland & Barratt and Waterstones, you'll find it all in Ealing.

Westfield

Westfield is a byword for true destination shopping. As well as favourite chains you'll also find newer and less frequently found ones like Monki, Uniqlo, and Smiggle, with a dash of designer brands like Prada. After shopping, catch a film at the Vue or stay to eat at one of the many eateries.

London Designer Outlet Centre, Wembley

The Wembley outlet just four miles away has a wealth of designer fashion, lifestyle and tech brands from Superdry to Sunglasses Hut and Sony as well as premium chocolatiers, designer cooking ware, and perfumes, all at discounted prices.



West London has many unexpected places to discover, from museums and village greens to engineering feats of the industrial age and even a zoo.

Uncover West London's hidden gems



Kew

Kew is more than its world famous Botanic Gardens; it's a place to enjoy village ambiance with a traditional village green where cricket is still played in summer, a duckpond, and traditional inns.



Hanwell

The historic Hanwell Flight of Locks along the Grand Union Canal raises the water by 16m and is designated a Scheduled Ancient Monument. Popular with walkers and cyclists, take in the view painted by JMW Turner, and picnic on one of the grassy spots.



Brentford

The Musical Museum tells the story of how music has been recorded and listened to from wind-up music boxes and gramophones to mighty Wurlitzer organs and 20th Century synthesizers, with a special collection of self playing instruments.



Chiswick

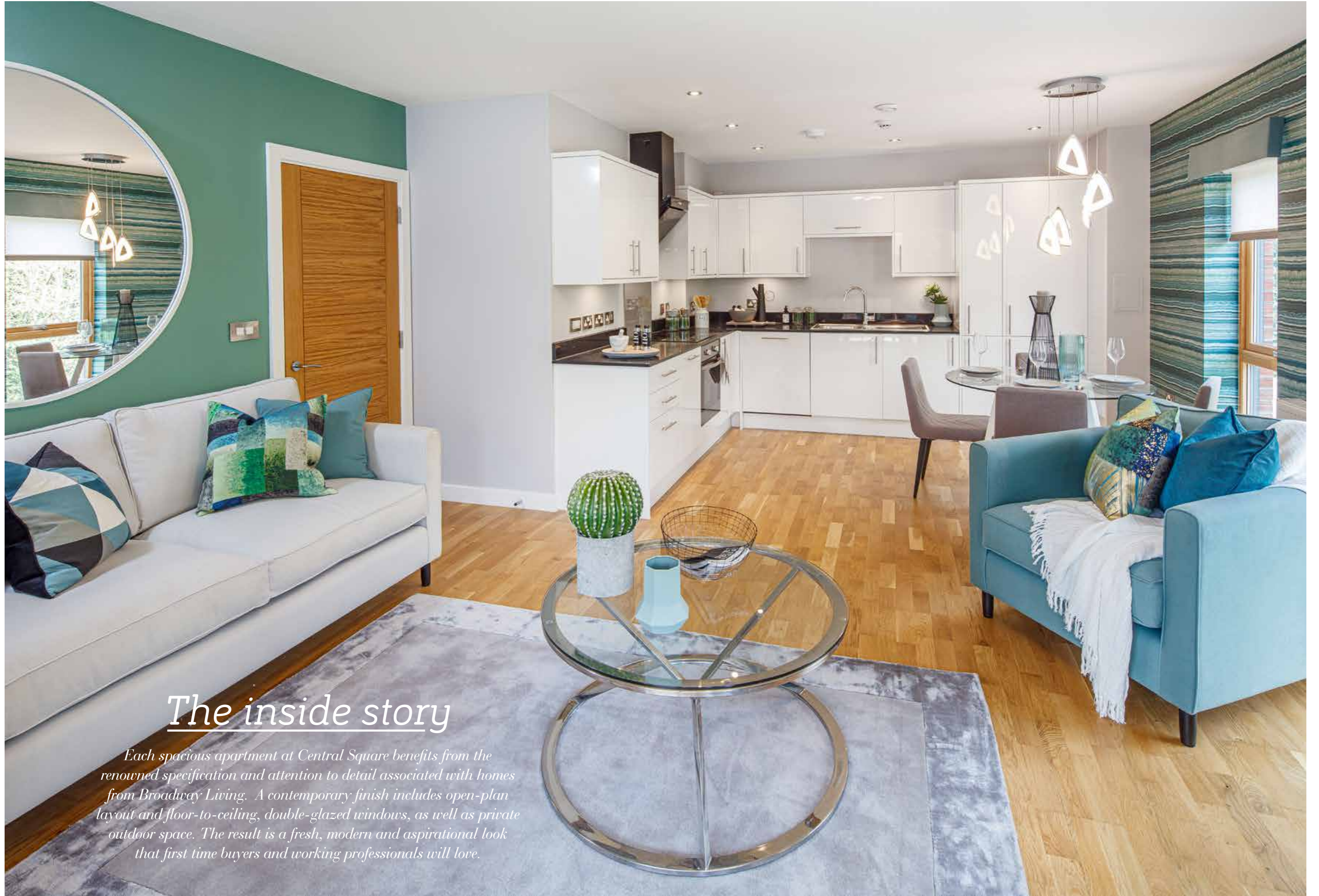
Chiswick High Road and side roads are lined with boutiques and antique emporia. Enjoy a yoga session next to an Ionic Temple or a Chiswick Festival event in a Walled Garden, and find a spot on the riverbank to cheer at the annual Boat Race.



Brent Lodge Park

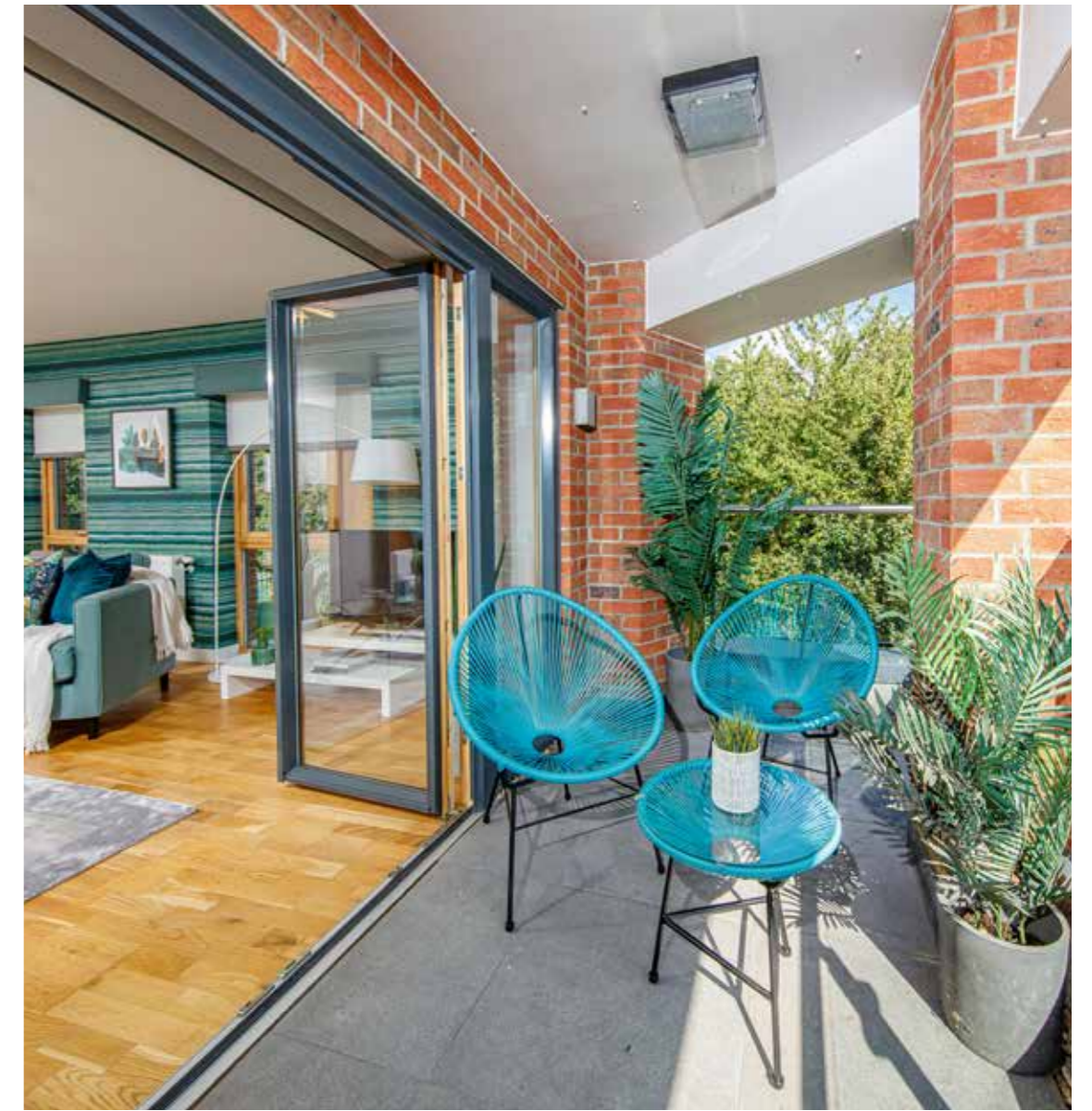
A maze of 2,000 yew trees and the setting for Hanwell Zoo, known locally as 'bunny park', home to meerkats, mara, and exotic birds, where conservation meets community and nature.





The inside story

Each spacious apartment at Central Square benefits from the renowned specification and attention to detail associated with homes from Broadway Living. A contemporary finish includes open-plan layout and floor-to-ceiling, double-glazed windows, as well as private outdoor space. The result is a fresh, modern and aspirational look that first time buyers and working professionals will love.





Kitchens are sleek and modern with handleless super matt fitted units in graphite or pebble finish and contrasting laminate worktops. Fully integrated appliances are included: a Zanussi ceramic hob, multi-function oven, fridge/freezer, washer/dryer and dishwasher, and an extractor hood. The 1.5 stainless steel sink has a Grohe chrome mixer tap, and the kitchen also features toughened glass splashbacks as well as LED downlights under wall cabinets.

Kitchen



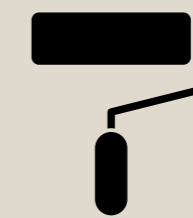
Bathrooms feature a white Roca basin and vanity unit with a full width mirror above the sink, as well as a steel bath and glass bath screen, and a heated chrome towel rail. The thermostatic shower mixer and chrome sanitaryware are Grohe. There is full height porcelain wall tiling, and a brushed stainless steel dual voltage shaver socket. Ensuites feature sliding glass screens and low profile shower trays, with Roca fixtures and Grohe sanitaryware.

Bathroom and ensuite



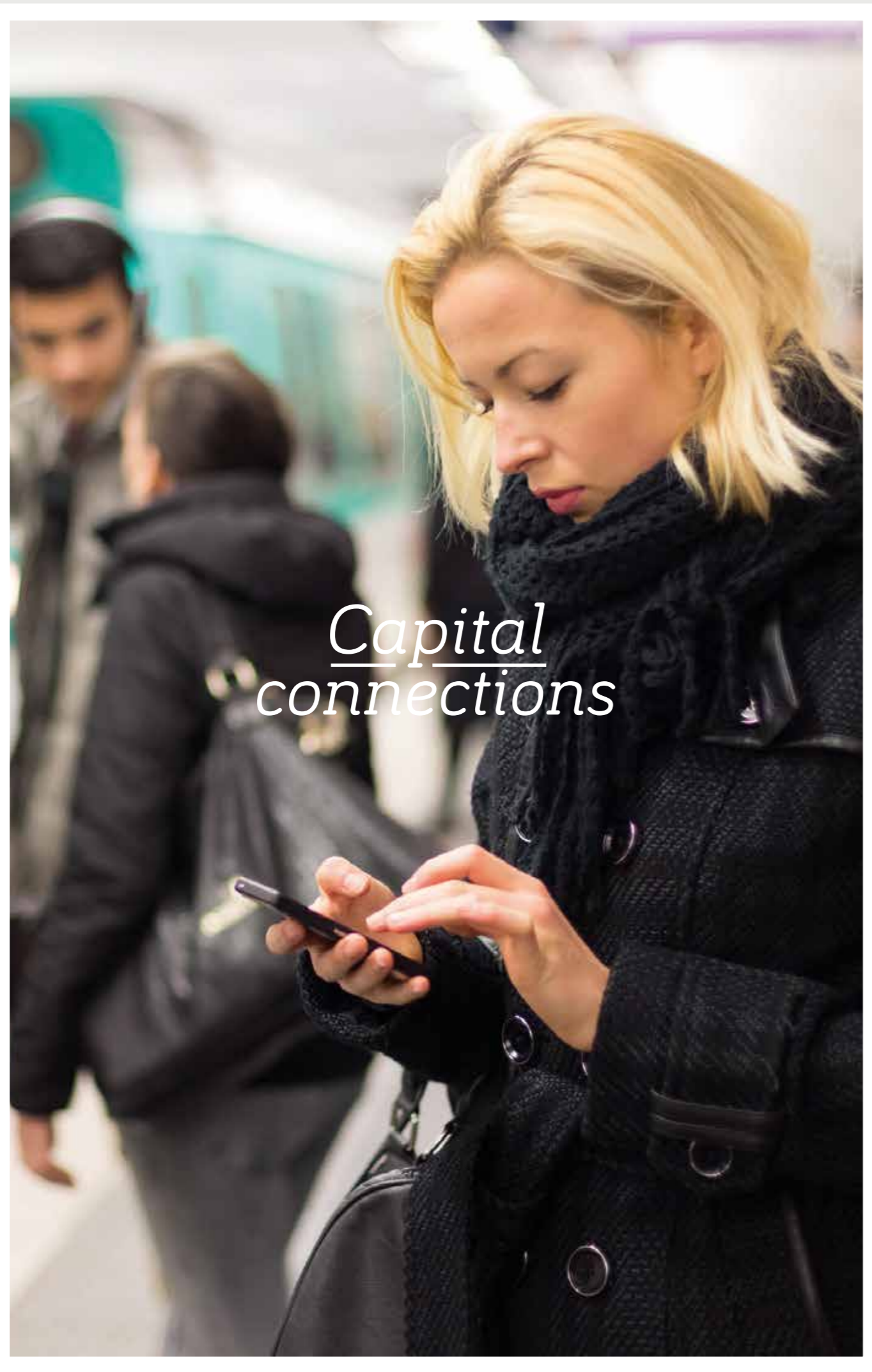
There is the option of Sky, Virgin, TV and telephone outlets to the Living Room and TV outlets to all Bedrooms. Sockets and light switches are in brushed stainless steel, and all rooms feature recessed spotlights which are dimmable in the Lounge and Bedrooms. Entry to all apartments is via video entryphone system. New residents receive a comprehensive induction to their new home, and each home comes with a 10-year NHBC warranty.

Electrical and security



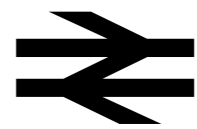
Wall and ceilings are decorated in a matt emulsion, with woodwork in a white satinwood finish. Fixtures & Fittings include Linear oak internal doors with chrome door handles. Main Bedrooms have built-in wardrobes with full height mirrored doors and LED auto-lighting, and all Bedroom have luxury carpet flooring. Hallways, Living Rooms and Kitchens feature engineered timber flooring, with Johnson Parquet ceramic tiles in bathrooms and Johnson textured tile in Ensuites.

General features



Capital connections

Castle Bar Park overground railway station (Zone 4) is conveniently situated adjacent to Central Square at the heart of Copley, with a fast and direct service that's just 22 minutes to London Paddington.



By Train

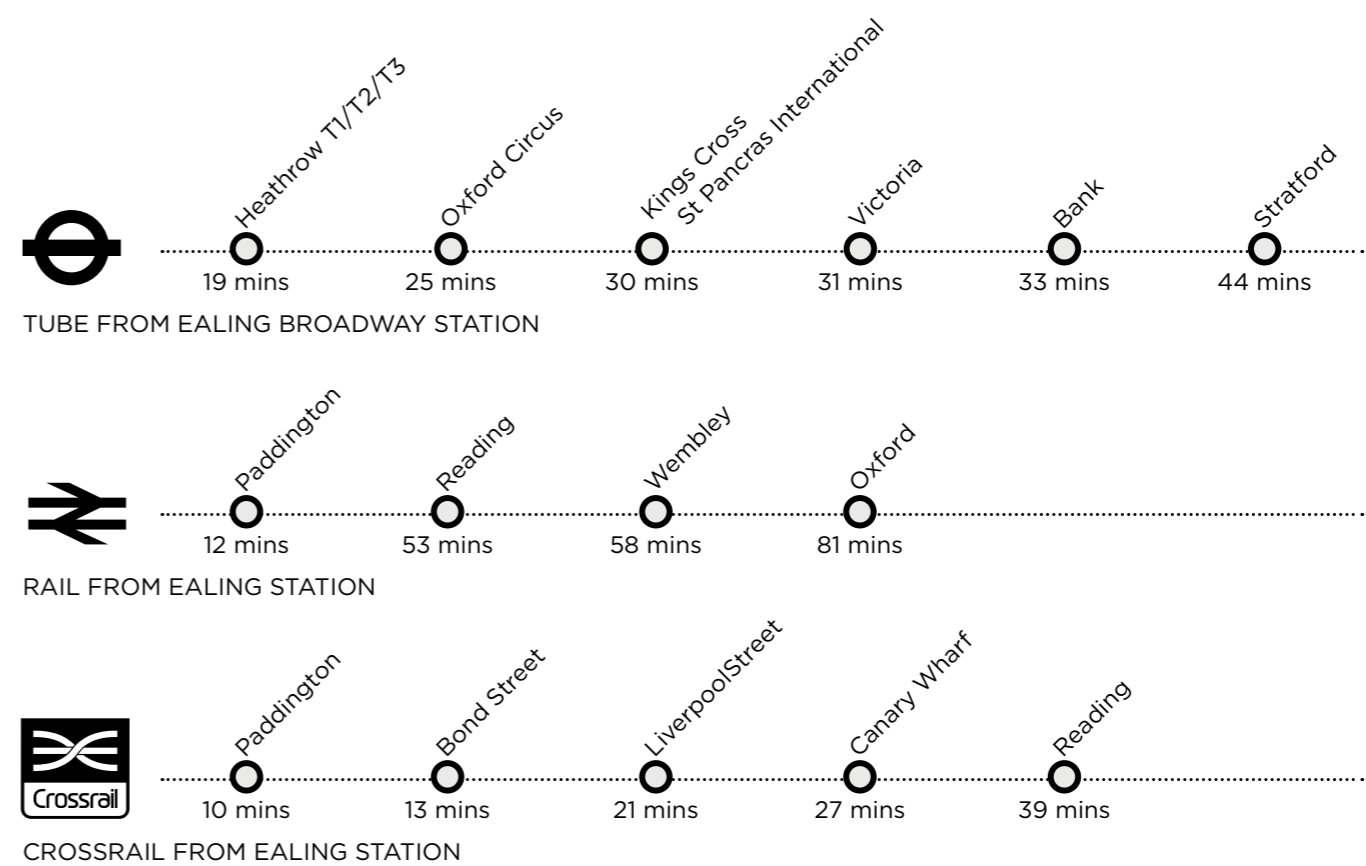
Nearby Hanwell Station provides a direct service to Heathrow (Terminals 2 and 3) in just 19 minutes.

When the Elizabeth Line is launched, Hanwell, West Ealing and Ealing Broadway stations will all be served by a fleet of air-conditioned trains direct to the West End, the City, Docklands and Heathrow Airport.



By Tube

Ealing Broadway station is just 10 minutes away by rail and offers the convenience of Overground, District and Central Line services.





Quality urban living

Making the most of urban living means feeling connected to the city and all it has to offer, as well having a range of amenities close to home. It's also about green outdoor spaces to recharge your city batteries. At Central Square you will find the perfect balance, in a setting tailored to your urban lifestyle.



BROADWAY LIVING

www.broadwayliving.co.uk



Creating better places and quality new housing in Ealing

Ealing was one of the first local authorities to create an arms-length, wholly-owned company, tasked with developing homes on behalf of the Council. Five years on, Broadway Living is an award-winning developer, having won The Evening Standard New Homes Awards 2018, First Time Buyer Readers' Awards 2018, WhatHouse? Awards 2018 and was a finalist for The Planning Awards 2018.



info@broadwayliving.co.uk
020 7087 5111
copleyhanwellw7.co.uk

