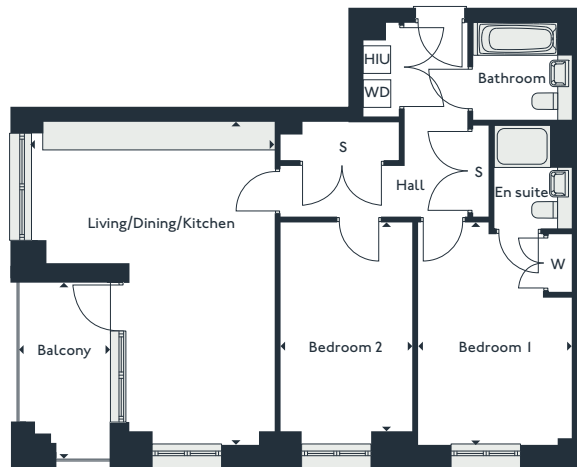


Parkside

Two bedroom apartments

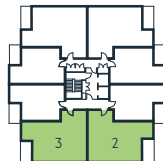
GEORGE COURT

2' | 10' | 18'
3 | 11 | 19

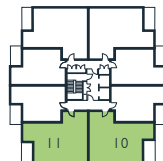


Living/Dining/Kitchen	4.9m x 6.8m	16'1" x 22'4"
Bedroom 1	3.3m x 4.7m	10'8" x 15'5"
Bedroom 2	2.8m x 4.4m	9'2" x 14'6"
Balcony	1.9m x 3.7m	6'4" x 12'3"
Gross internal area	78.4 m²	844 sqft

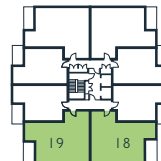
S - Storage
W - Wardrobe
WD - Washer Dryer
HIU - Heat Interface Unit



First floor



Second floor



Third floor

PARK

ROYAL
ALBERT
WHARF

THE ROYAL DOCKS

www.royalalbertwharf.com

*Handed to floorplan shown. Layouts shown here are for approximate measurements only. They are not necessarily shown to scale. Exact layout and sizes of properties may vary. Please speak to a Sales Advisor for exact details.