

72-74

BROMLEY
HIGH STREET



72-74 BROMLEY HIGH STREET

Welcome to the heart of East London

72-74 Bromley High Street is an exciting new development in the heart of London's vibrant East End.

The development offers a range of stylish and well-proportioned one and two bedroom apartments that are perfect for contemporary London living.

Boasting excellent cycling, road and rail links into The City, Stratford and Canary Wharf, where work, leisure and shopping is all within easy reach.



With a thriving local social scene, there are a wide range of pubs, cafés and restaurants in the area.

East London is a hub for art and culture and it continues to be the focal point of creativity, with exhibitions and events being held across East London regularly.



To see a different side of London, take a walk or cycle along the canal to the green spaces of the Queen Elizabeth Olympic Park or explore the diverse and lively area that's deservedly popular with buyers.

You can explore the bustling local markets for a bargain or find bigger brands in nearby Westfield Shopping Centre.





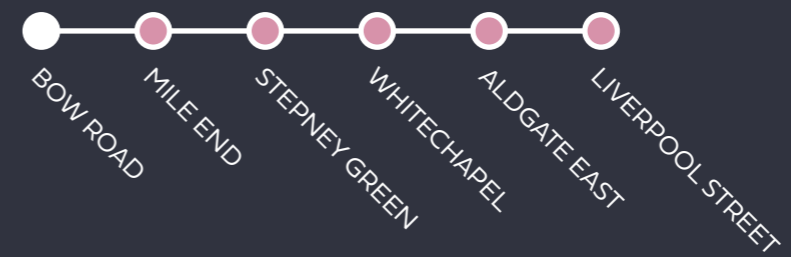
LOCATION – Getting Around

Beyond the local stores and cafés, the rest of London is within easy reach thanks to transport links into Canary Wharf Stratford and The City from nearby Bow Church DLR and Bow Road Underground stations.

Central London

Hammersmith & City Line

6 Minutes



Canary Wharf

DLR

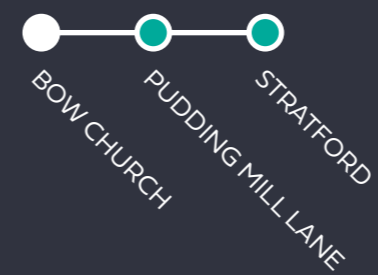
9 Minutes



Westfield

DLR

4 Minutes





Kitchen

- Fitted kitchen units in white with contrasting indigo blue wall cupboards
- Integrated AEG appliances including fridge/freezer, electric oven, microwave, induction hob, dishwasher, and washer/dryer
- Zanussi canopy hood over hob, with contemporary white glass splashbacks
- Quartz worktops
- Blanco stainless steel sink with chrome tap

Bathroom

- Contemporary tiled bathrooms and ensuites
- Modern white sanitary ware by Twyford and Gerberit
- Bristan taps and shower head in chrome
- Over-bath glass shower screen
- Full width wall mirror over sink
- Practical flooring with grey porcelain tiles

SPECIFICATION –

Discover your new home

These new and modern apartments offer high-quality living spaces with every detail built around what modern-day buyers are looking for.

The smart layouts and high-quality materials create spaces that are contemporary and relaxing.

Equipped with premium fixtures and high-end appliances throughout, you'll have everything you need.

There is durable oak laminated woodstrip flooring in areas of heavy traffic and the luxury carpeted bedrooms provide the perfect combination of practicality and comfort.

Each apartment has its own private balcony for the perfect spot to enjoy your morning coffee.



General Specification

- All homes have a private balcony
- Oak laminated wood-strip flooring through the kitchen, living/dining area and connected hallways
- Carpeted bedrooms
- Fitted wardrobes with sliding mirror doors in all master bedrooms
- Fitted roller blinds throughout
- Matt white painted walls throughout

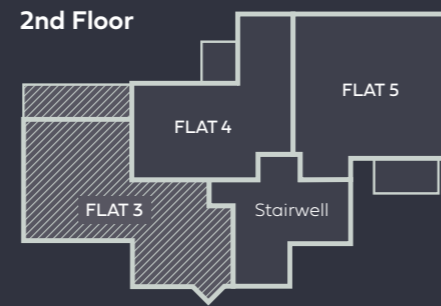


All images are illustrations of this type of home from a previous Poplar HARCA show home or development. Please check with your Sales Executives for further information. Images are not intended to be relied upon for, nor form part of, any contract.

FLAT 3 – 2 Bedroom Apartment

Total Area	69.7 m²	750 sq. ft
Kitchen/Living	23.3 m ²	251 sq. ft
Bedroom 1	12.3 m ²	132 sq. ft
Bedroom 2	12.4 m ²	133 sq. ft

Site Plan

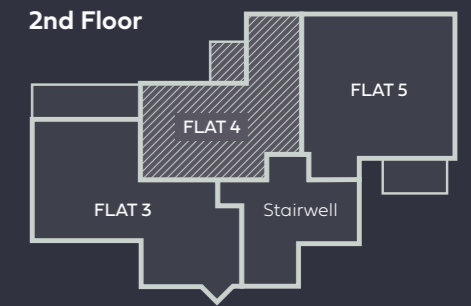


All floorplans shown are approximate measurements only. Exact layouts and sizes may vary. All measurements may vary and are not intended to be used for carpet sizes, appliance sizes or items of furniture. Furniture layouts are indicative only. Kitchen layout is indicative only, please ask one of our Sales Executives for further information.

FLAT 4 – 1 Bedroom Apartment

Total Area	53.3 m²	574 sq. ft
Kitchen/Living	24.0 m ²	258 sq. ft
Bedroom	16.3 m ²	175 sq. ft

- Site Plan

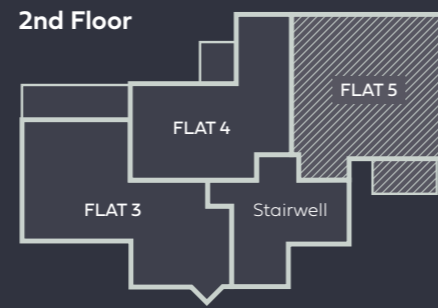


All floorplans shown are approximate measurements only. Exact layouts and sizes may vary. All measurements may vary and are not intended to be used for carpet sizes, appliance sizes or items of furniture. Furniture layouts are indicative only. Kitchen layout is indicative only, please ask one of our Sales Executives for further information.

FLAT 5 – 2 Bedroom Apartment

Total Area	67.6 m²	728 sq. ft
Kitchen/Living	27.9 m ²	300 sq. ft
Bedroom 1	12.2 m ²	131 sq. ft
Bedroom 2	8.4 m ²	90 sq. ft

- Site Plan

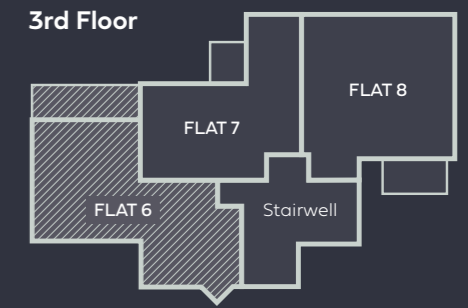


All floorplans shown are approximate measurements only. Exact layouts and sizes may vary. All measurements may vary and are not intended to be used for carpet sizes, appliance sizes or items of furniture. Furniture layouts are indicative only. Kitchen layout is indicative only, please ask one of our Sales Executives for further information.

FLAT 6 – 2 Bedroom Apartment

Total Area	69.7 m²	750 sq. ft
Kitchen/Living	23.3 m ²	251 sq. ft
Bedroom 1	12.3 m ²	132 sq. ft
Bedroom 2	12.4 m ²	133 sq. ft

- Site Plan

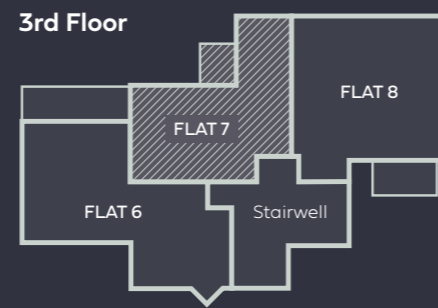


All floorplans shown are approximate measurements only. Exact layouts and sizes may vary. All measurements may vary and are not intended to be used for carpet sizes, appliance sizes or items of furniture. Furniture layouts are indicative only. Kitchen layout is indicative only, please ask one of our Sales Executives for further information.

FLAT 7 – 1 Bedroom Apartment

Total Area	53.3 m²	574 sq. ft
Kitchen/Living	24.0 m ²	258 sq. ft
Bedroom	16.3 m ²	175 sq. ft

- Site Plan

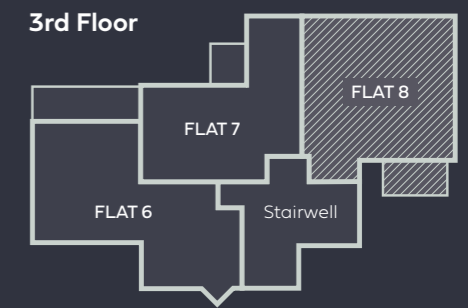


All floorplans shown are approximate measurements only. Exact layouts and sizes may vary. All measurements may vary and are not intended to be used for carpet sizes, appliance sizes or items of furniture. Furniture layouts are indicative only. Kitchen layout is indicative only, please ask one of our Sales Executives for further information.

FLAT 8 – 2 Bedroom Apartment

Total Area	67.6 m²	728 sq. ft
Kitchen/Living	27.9 m ²	300 sq. ft
Bedroom 1	12.2 m ²	131 sq. ft
Bedroom 2	8.4 m ²	90 sq. ft

- Site Plan

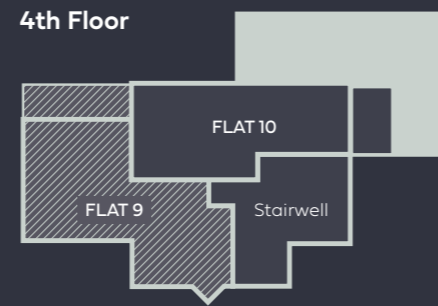


All floorplans shown are approximate measurements only. Exact layouts and sizes may vary. All measurements may vary and are not intended to be used for carpet sizes, appliance sizes or items of furniture. Furniture layouts are indicative only. Kitchen layout is indicative only, please ask one of our Sales Executives for further information.

FLAT 9 – 2 Bedroom Apartment

Total Area	69.7 m²	750 sq. ft
Kitchen/Living	23.3 m ²	251 sq. ft
Bedroom 1	12.3 m ²	132 sq. ft
Bedroom 2	12.4 m ²	133 sq. ft

- Site Plan

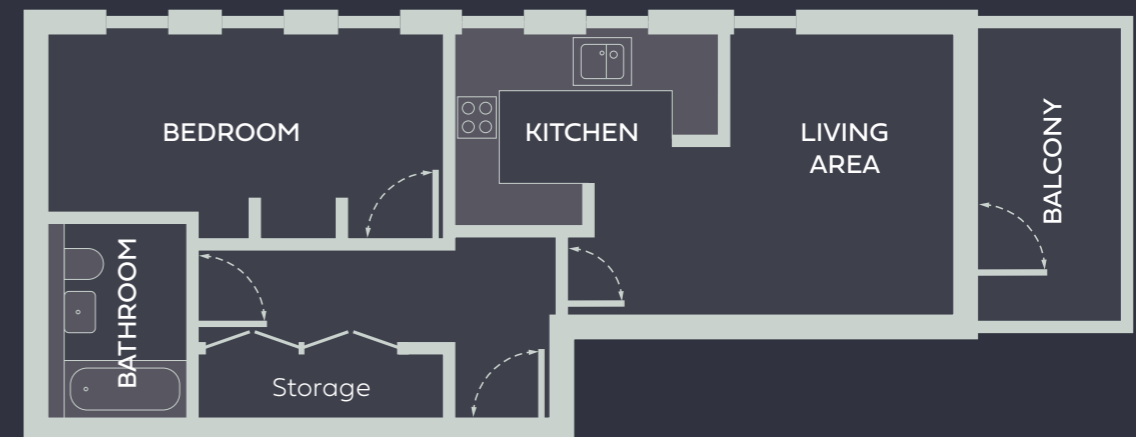
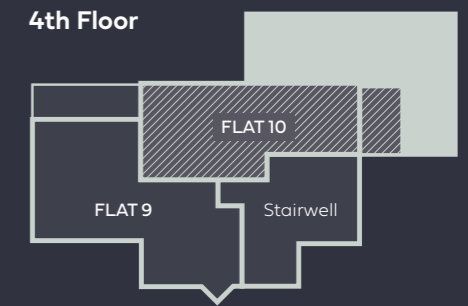


All floorplans shown are approximate measurements only. Exact layouts and sizes may vary. All measurements may vary and are not intended to be used for carpet sizes, appliance sizes or items of furniture. Furniture layouts are indicative only. Kitchen layout is indicative only, please ask one of our Sales Executives for further information.

FLAT 10 – 1 Bedroom Apartment

Total Area	54.4 m²	586 sq. ft
Kitchen/Living	23.5 m ²	253 sq. ft
Bedroom	13.5 m ²	145 sq. ft

- Site Plan



All floorplans shown are approximate measurements only. Exact layouts and sizes may vary. All measurements may vary and are not intended to be used for carpet sizes, appliance sizes or items of furniture. Furniture layouts are indicative only. Kitchen layout is indicative only, please ask one of our Sales Executives for further information.

Further Information

Shared Ownership

Apartments are available on a shared ownership basis, with shares from as little as 10%.

Sales

72-74 Bromley High Street is the London home you've been looking for. To see it for yourself, book a viewing today.

Call

0207 538 6460

Email

sales.enquiries@poplarharca.co.uk

These brief particulars have been prepared and are intended as a convenient guide to supplement an inspection or survey and do not form, or form part of, any offer or contract. Their accuracy is not guaranteed. They contain statements of opinion and in some instances we have relied on information supplied by others. Design elements and specification details may change without further notice. You should verify the particulars on your visit to the property and the particulars do not obviate the need for a full structural survey and all the appropriate checks. Accordingly, there shall be no liability as a result of any error or omission in the particulars or any information given. July 2021.