

THREE BEDROOM HOUSE

# THE WINTON

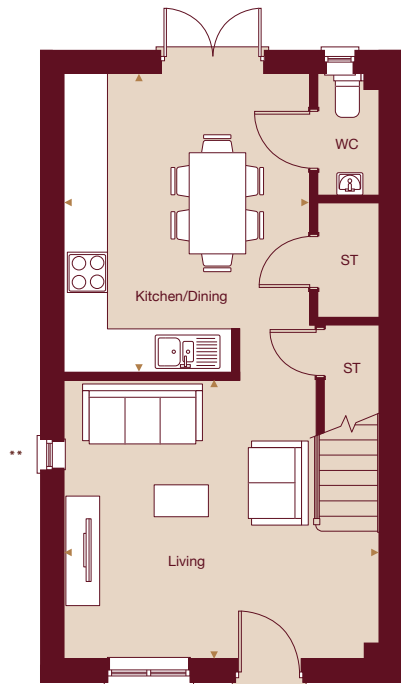
TOTAL INTERNAL AREA: 83 M<sup>2</sup> (893 FT<sup>2</sup>)

Living	4.78m	x	4.22m	15'8"	x	13'10"
Kitchen/Dining	4.52m	x	3.73m	14'9"	x	12'2"
Bedroom 1	4.56m	x	2.59m	14'11"	x	8'5"
Bedroom 2	4.18m	x	2.59m	13'8"	x	8'5"
Bedroom 3	3.69m	x	2.10m	12'1"	x	6'10"

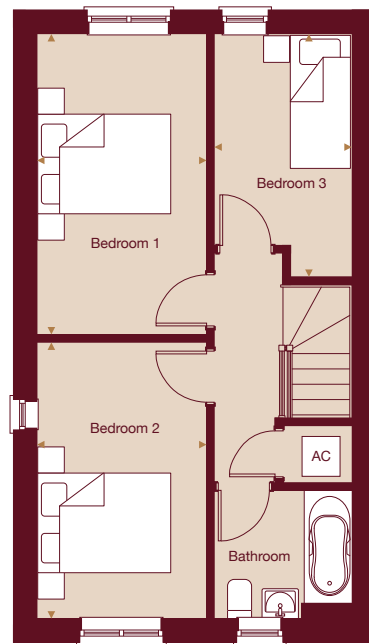
*\*Indicates that this plot is banded*

- Plot 47\* 7 Farthing Land
- Plot 108\* 9 Jervises Croft
- Plot 116 18 Jervises Croft
- Plot 118 14 Jervises Croft
- Plot 120 10 Jervises Croft
- Plot 138 16 New Breck Road
- Plot 214\* 24 Furlong Close
- Plot 224 15 Furlong Close

*\*\*Window schedule differs for plot 138.  
Please speak to a sales advisor for more information*



GROUND FLOOR



FIRST FLOOR

ST - storage AC - airing cupboard

Furniture outlines are placed as a guide only. All homes are unfurnished. The kitchen, dimensions and furniture layouts on floorplans displayed are for guidance only. Dimensions are rounded down to one decimal point and are taken from the points indicated and are not intended to be used for carpet sizes, appliance space or items of furniture. The sq m and sq ft are measured as Gross Internal Areas using the RICS code to measure. Property layouts shown here are approximate measurements only. All measurements and areas may vary within a tolerance of 5%. Measurements are shown largest x smallest in all instances. Wardrobe layouts and locations are indicative only. Balconies may vary in size. Window arrangements may vary from floor-to-floor. Please speak to your Sales Executive for details.

THREE BEDROOM HOUSE

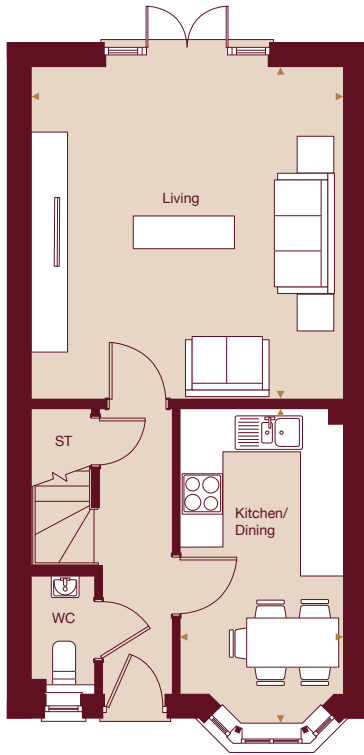
# THE FRYE

TOTAL INTERNAL AREA: 88 M<sup>2</sup> (954 FT<sup>2</sup>)

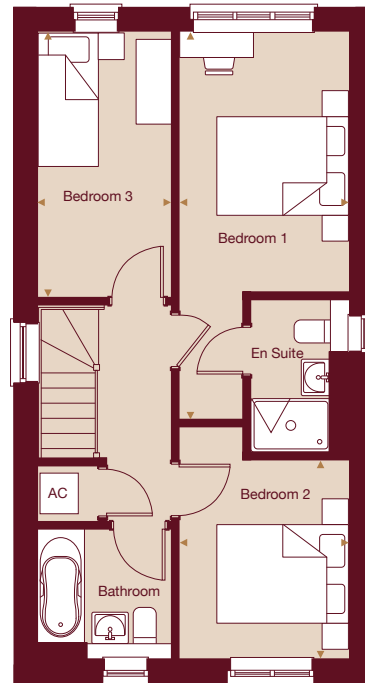
Plot 157\* 12 Lea Road  
 Plot 161\* 29 Bere Road  
 Plot 225 17 Furlong Close  
 Plot 226\* 19 Furlong Close

Living	4.98m	x	4.68m	16'4"	x	15'4"
Kitchen/Dining	4.27m	x	2.45m	14'1"	x	8'1"
Bedroom 1	5.81m	x	2.55m	19'1"	x	8'5"
Bedroom 2	2.98m	x	2.55m	9'9"	x	8'5"
Bedroom 3	3.98m	x	2.01m	13'1"	x	6'7"

*\*Indicates that this plot is banded*



GROUND FLOOR



FIRST FLOOR

ST - storage AC - airing cupboard

Furniture outlines are placed as a guide only. All homes are unfurnished. The kitchen, dimensions and furniture layouts on floorplans displayed are for guidance only. Dimensions are rounded down to one decimal point and are taken from the points indicated and are not intended to be used for carpet sizes, appliance space or items of furniture. The sq m and sq ft are measured as Gross Internal Areas using the RICS code to measure. Property layouts shown here are approximate measurements only. All measurements and areas may vary within a tolerance of 5%. Measurements are shown largest x smallest in all instances. Wardrobe layouts and locations are indicative only. Balconies may vary in size. Window arrangements may vary from floor-to-floor. Please speak to your Sales Executive for details.

THREE BEDROOM HOUSE

# THE DENBY

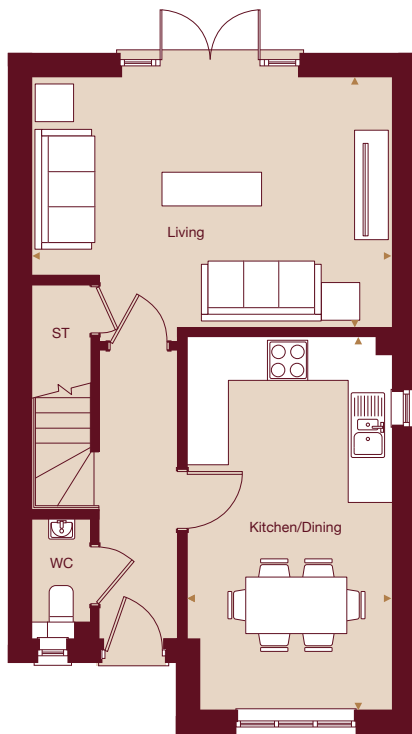
TOTAL INTERNAL AREA: 99M<sup>2</sup> (1066 FT<sup>2</sup>)

Living	5.40m	x	3.76m	17'9"	x	12'4"
Kitchen/Dining	5.61m	x	3.07m	18'5"	x	10'1"
Bedroom 1	4.09m	x	3.12m	13'5"	x	10'3"
Bedroom 2	3.12m	x	3.04m	10'3"	x	10'0"
Bedroom 3	3.00m	x	2.16m	9'10"	x	7'1"

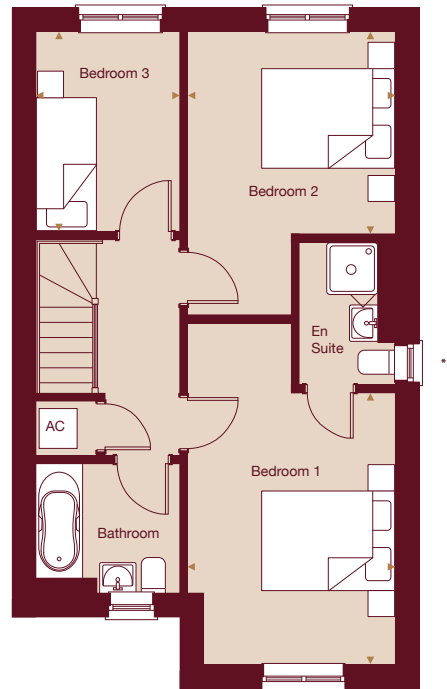
*\*Indicates that this plot is banded*

- Plot 147 9 New Breck Road
- Plot 148\* 7 New Breck Road
- Plot 196 33 Lea Road
- Plot 197\* 31 Lea Road
- Plot 201 23 Lea Road
- Plot 202\* 21 Lea Road
- Plot 217 30 Furlong Close
- Plot 218\* 32 Furlong Close
- Plot 231\* 3 Lea Road
- Plot 232 5 Lea Road

*\*\*Window schedule differs for plots 147, 148, 202 and 232. Please speak to a sales advisor for more information*



GROUND FLOOR



FIRST FLOOR

ST - storage AC - airing cupboard

Furniture outlines are placed as a guide only. All homes are unfurnished. The kitchen, dimensions and furniture layouts on floorplans displayed are for guidance only. Dimensions are rounded down to one decimal point and are taken from the points indicated and are not intended to be used for carpet sizes, appliance space or items of furniture. The sq m and sq ft are measured as Gross Internal Areas using the RICS code to measure. Property layouts shown here are approximate measurements only. All measurements and areas may vary within a tolerance of 5%. Measurements are shown largest x smallest in all instances. Wardrobe layouts and locations are indicative only. Balconies may vary in size. Window arrangements may vary from floor-to-floor. Please speak to your Sales Executive for details.