

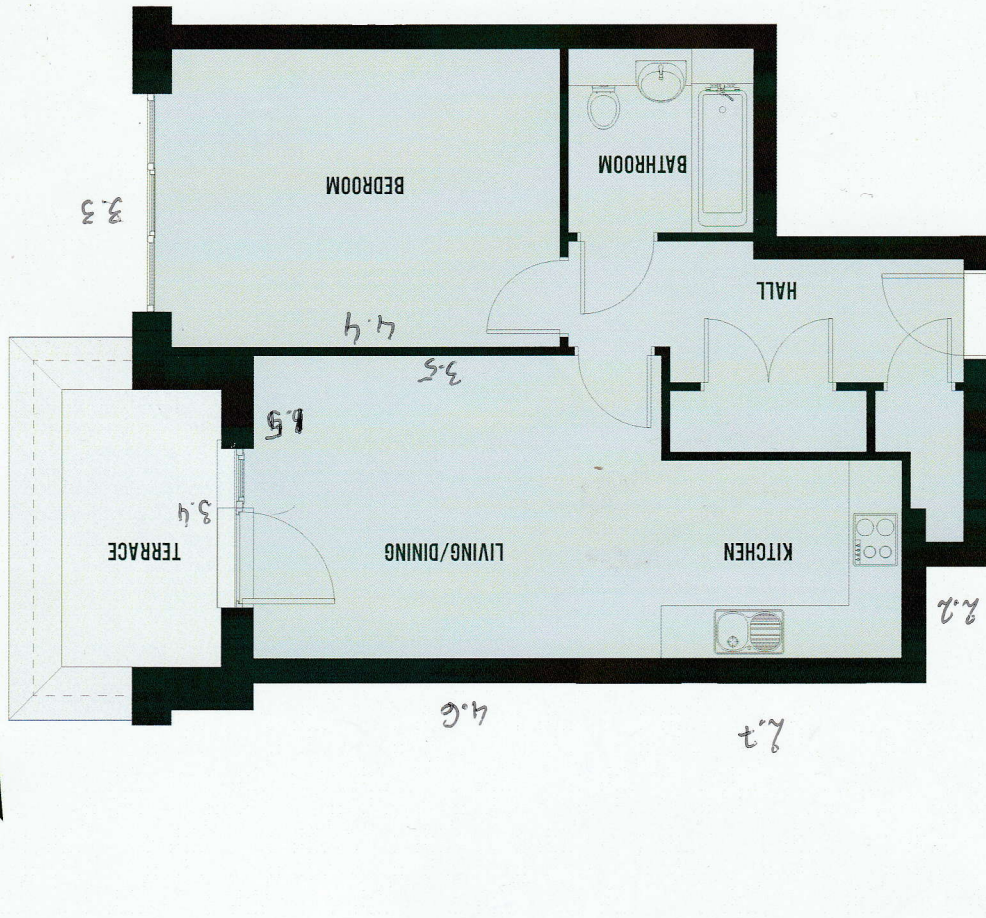
MOAT AT KIDBROOKE VILLAGE

104 NOBLE HOUSE, 48 OTTLEY DRIVE, SE3 9GF

104 NOBLE HOUSE

ONE BEDROOM APARTMENT
Total internal area: 52 m² | First floor

Living / dining 3.4m x 4.6m
Kitchen 2.2m x 2.7m
Bedroom 3.3m x 4.4m



Energy Efficient Rating	
Very energy efficient - lower running costs	(92 plus) A
Energy efficient - higher running costs	(81-91) B
	(69-80) C
	(55-68) D
	(39-54) E
	(21-38) F
	(1-20) G
Current	85
Potential	85

INSPIRED SHARED OWNERSHIP



Floorplans shown are indicative only. All room sizes are approximate with maximum dimensions of finished measurements. Measurements have been taken into the kitchen units and are not intended for carpet sizes or items of furniture. Room layouts may be subject to minor modifications. Please note: purchasers must arrange their own contents insurance. Furniture, kitchen and bathroom layouts shown are indicative only. Measurement at widest point. Moat supports the development of mixed tenure communities and is proud to provide homes for shared ownership at Kidbrooke Village. We may change the tenure of some properties subject to demand. Moat Homes Limited is a charitable housing association.