

Crane Court
Shared Ownership

Make the smart move South

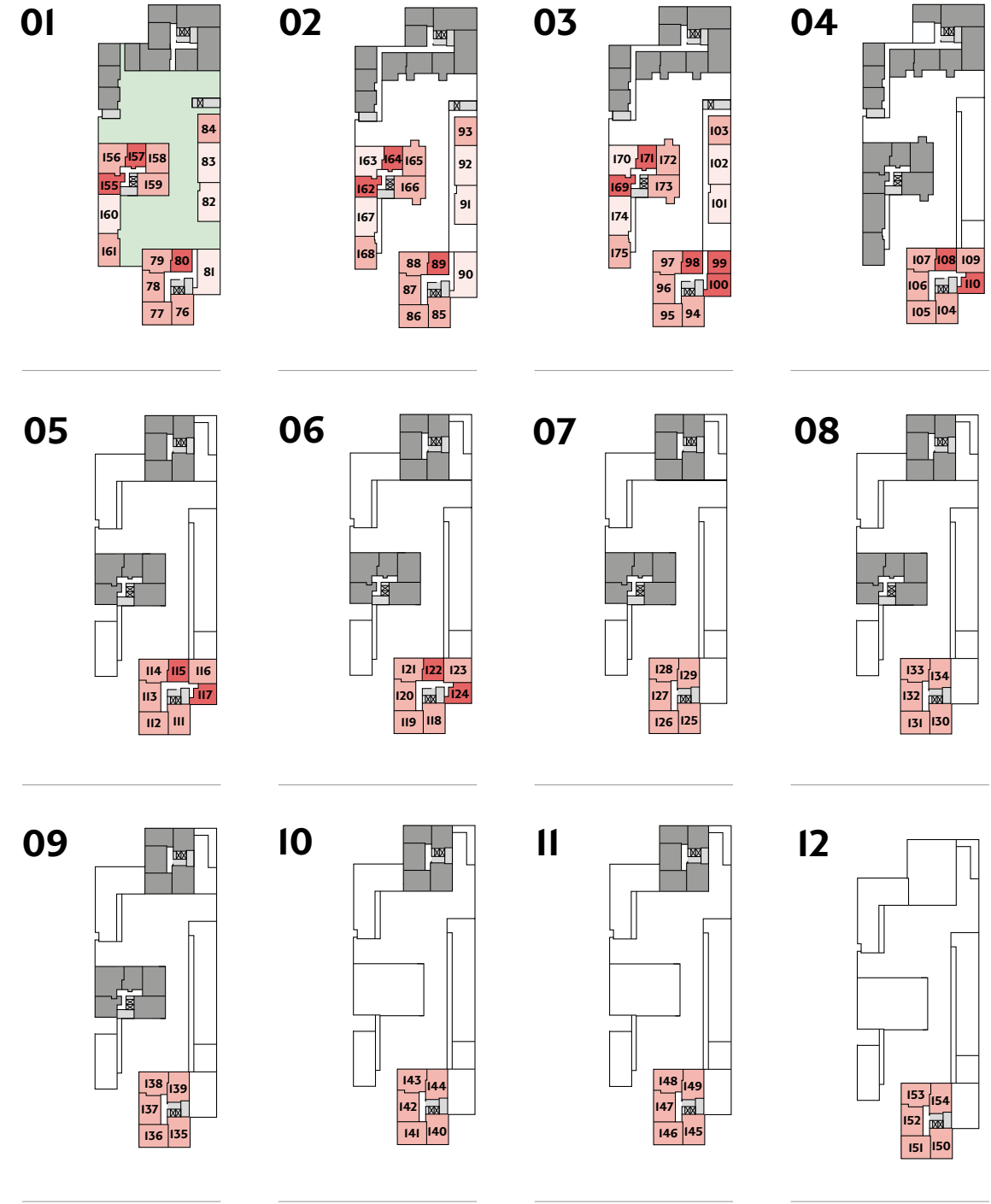


SOUTHMERE

FLOORPLANS

**Find the
place that
fits your
lifestyle**

FLOOR



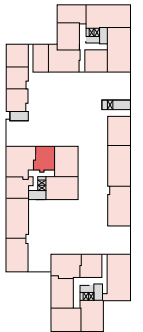
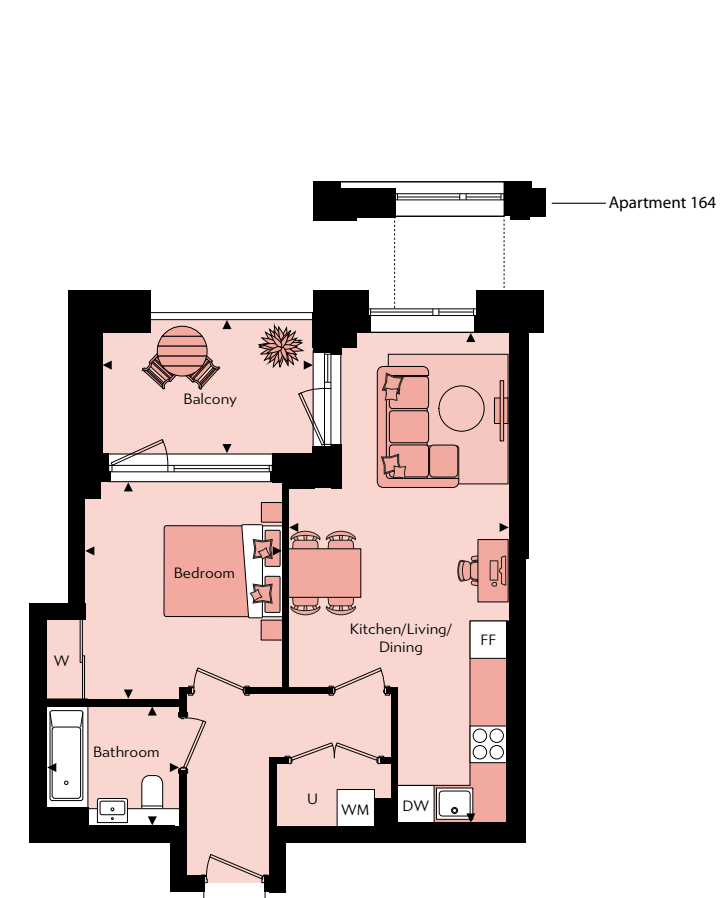
1

Bedroom Apartments

1 Bedroom Apartment

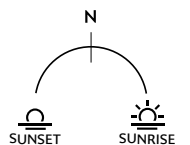
Apartments 157, 164 & 171

Gross Internal Floor Area 50.2m² / 540ft²



Floor	Apt. No
3	171
2	164
1	157

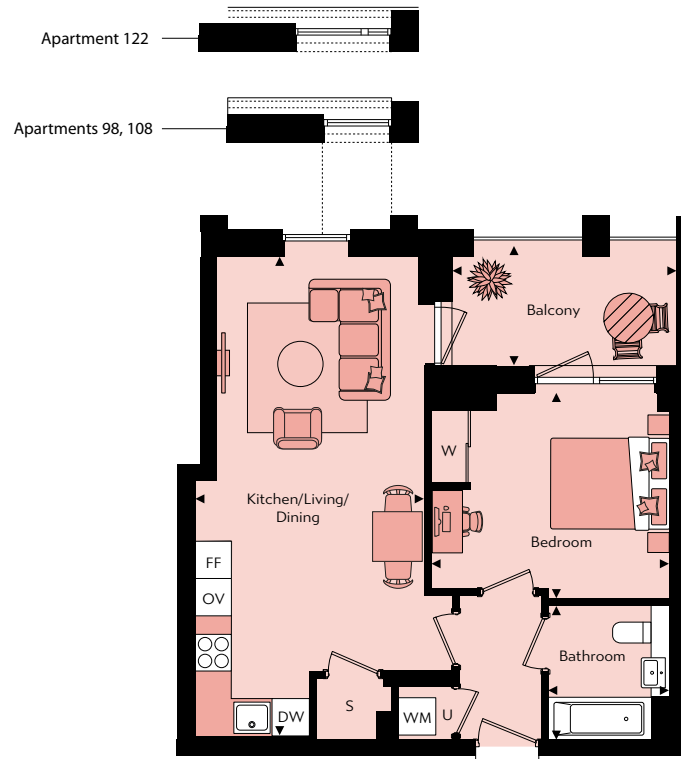
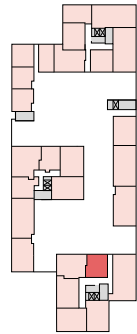
Kitchen/Living/Dining	8.14m x 3.66m	26'8" x 12'0"
Bedroom	3.60m x 3.27m	11'10" x 10'9"
Bathroom	1.98m x 2.70m	6'6" x 7'3"
Balcony	2.22m x 3.49m	7'3" x 11'6"



☒ - Elevator | WM - Washing Machine | FF - Fridge Freezer | DW - Dish Washer | U - Utility | S - Storage cupboard | W - Built-in wardrobe

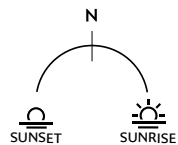
1 Bedroom Apartment

Apartments 80, 89, 98, 108, 115 & 122
Gross Internal Floor Area 52.1m² / 560ft²



Floor	Apt. No
6	122
5	115
4	108
3	98
2	89
1	80

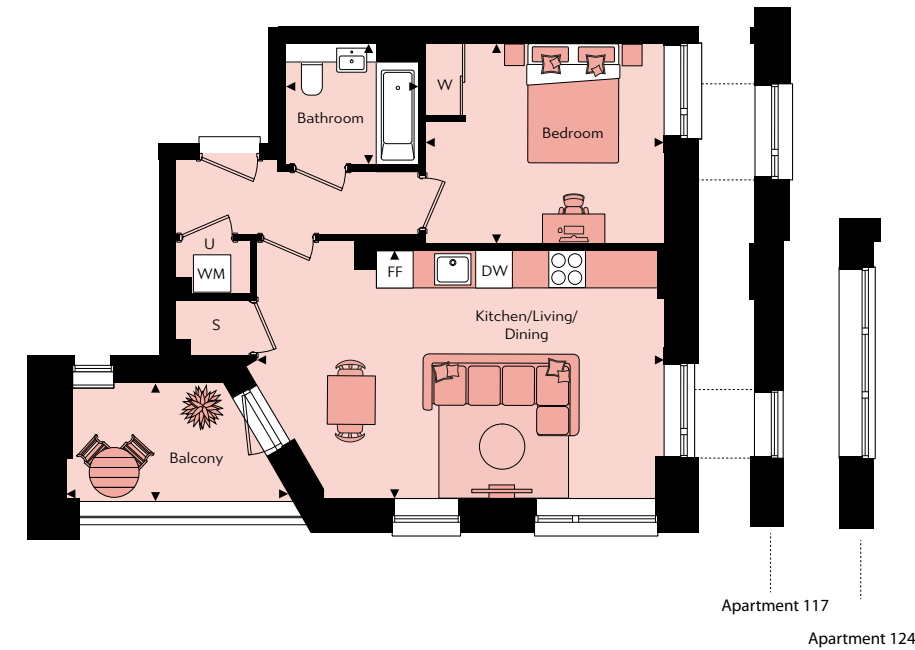
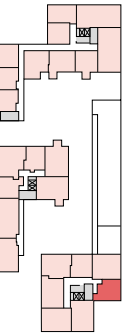
Kitchen/Living/Dining	3.79m x 7.92m	12'5" x 26'0"
Bedroom	3.94m x 3.40m	12'11" x 11'2"
Bathroom	1.99m x 2.20m	6'7" x 7'3"
Balcony	3.72m x 1.99m	12'3" x 6'7"



☒ - Elevator | WM - Washing Machine | FF - Fridge Freezer | DW - Dish Washer | OV - Single Tall Oven | U - Utility | S - Storage cupboard | W - Built-in wardrobe

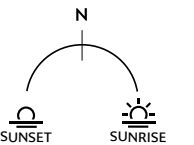
1 Bedroom Apartment

Apartments 110, 117 & 124
Gross Internal Floor Area 53.1m² / 571ft²



Floor	Apt. No
6	124
5	117
4	110

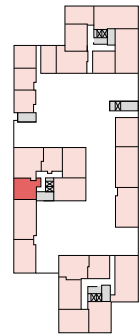
Kitchen/Living/Dining	6.74m x 4.11m	22'1" x 13'6"
Bedroom	3.95m x 3.31m	13'0" x 10'10"
Bathroom	2.19m x 2.00m	7'2" x 6'7"
Balcony	3.69m x 1.96m	12'2" x 6'5"



☒ - Elevator | WM - Washing Machine | FF - Fridge Freezer | DW - Dish Washer | U - Utility | S - Storage cupboard | W - Built-in wardrobe

1 Bedroom Apartment

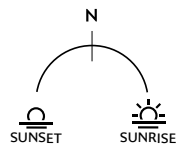
Apartments 155, 162 & 169
Gross Internal Floor Area 54.6m² / 587ft²



Floor	Apt. No
3	169
2	162
1	155



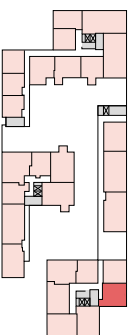
Kitchen/Living/Dining	5.86m x 4.14m	19'3" x 13'7"
Bedroom	3.45m x 3.53m	11'4" x 11'7"
Bathroom	2.01m x 2.19m	6'7" x 7'2"
Balcony	1.88m x 3.72m	6'2" x 12'3"



☒ - Elevator | WM - Washing Machine | FF - Fridge Freezer | DW - Dish Washer | U - Utility | S - Storage cupboard | W - Built-in wardrobe

1 Bedroom Apartment

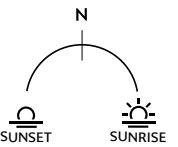
Apartment 100
Gross Internal Floor Area 56.9m² / 612ft²



Floor	Apt. No
3	100



Kitchen/Living/Dining	6.74m x 4.11m	22'1" x 13'6"
Bedroom	4.37m x 3.32m	14'4" x 10'11"
Bathroom	2.19m x 2.00m	7'2" x 6'7"
Balcony	3.60m x 2.00m	11'10" x 6'7"

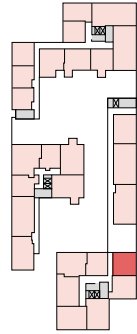


☒ - Elevator | WM - Washing Machine | FF - Fridge Freezer | DW - Dish Washer | U - Utility | S - Storage cupboard | W - Built-in wardrobe

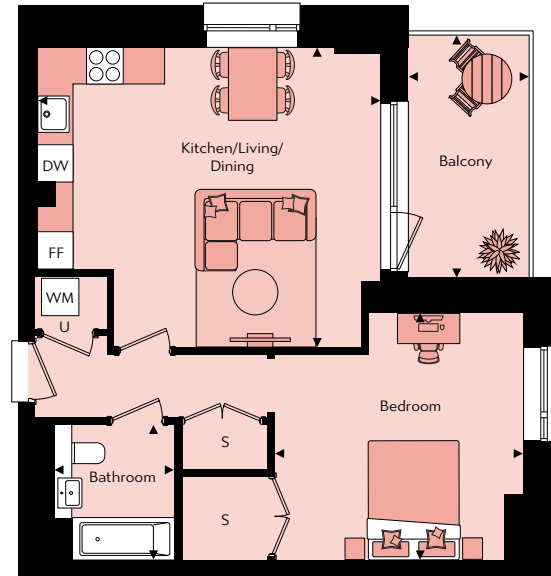
1 Bedroom Apartment

Apartment 99

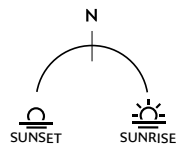
Gross Internal Floor Area 57.8m² / 622ft²



Floor	Apt. No
3	99



Kitchen/Living/Dining	5.68m x 4.97m	18'8" x 16'4"
Bedroom	4.12m x 4.12m	13'6" x 13'7"
Bathroom	2.00m x 2.25m	6'7" x 7'5"
Balcony	2.00m x 4.02m	6'7" x 13'2"



☒ - Elevator | WM - Washing Machine | FF - Fridge Freezer | DW - Dish Washer | U - Utility | S - Storage cupboard | W - Built-in wardrobe

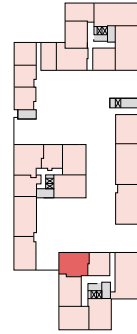
2

Bedroom Apartments

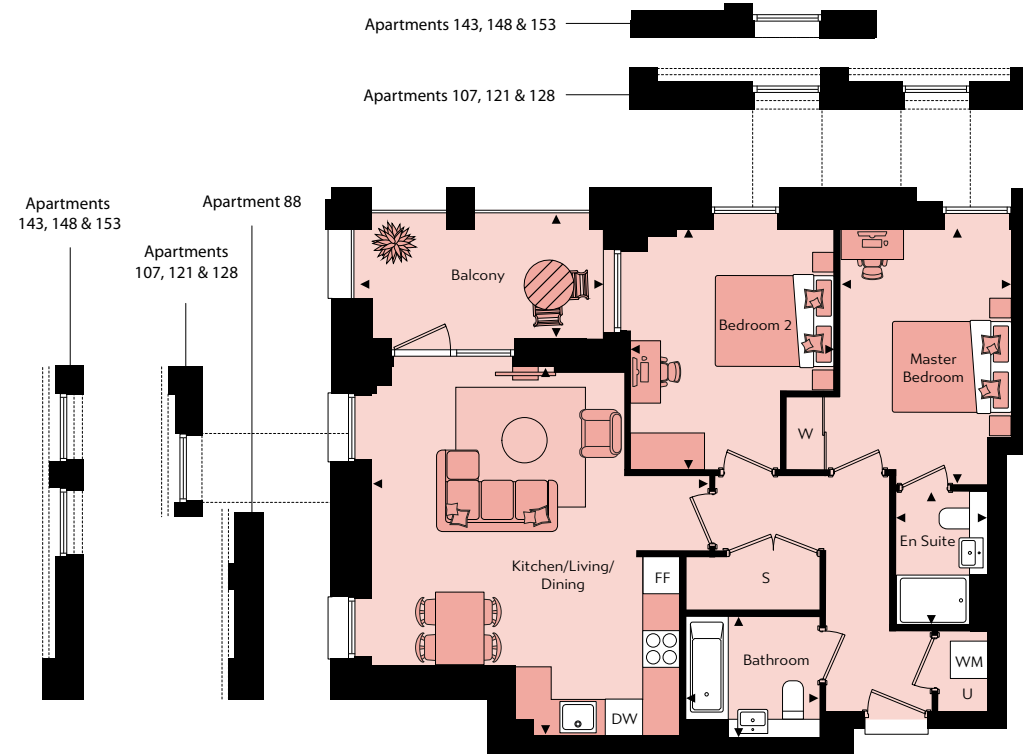


2 Bedroom Apartment

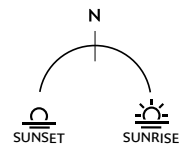
Apartments 79, 88, 97, 107, 114, 121, 128, 133, 138, 143, 148 & 153
Gross Internal Floor Area 73.0m² / 785ft²



Floor	Apt. No
12	153
11	148
10	143
9	138
8	133
7	128
6	121
5	114
4	107
3	97
2	88
1	79



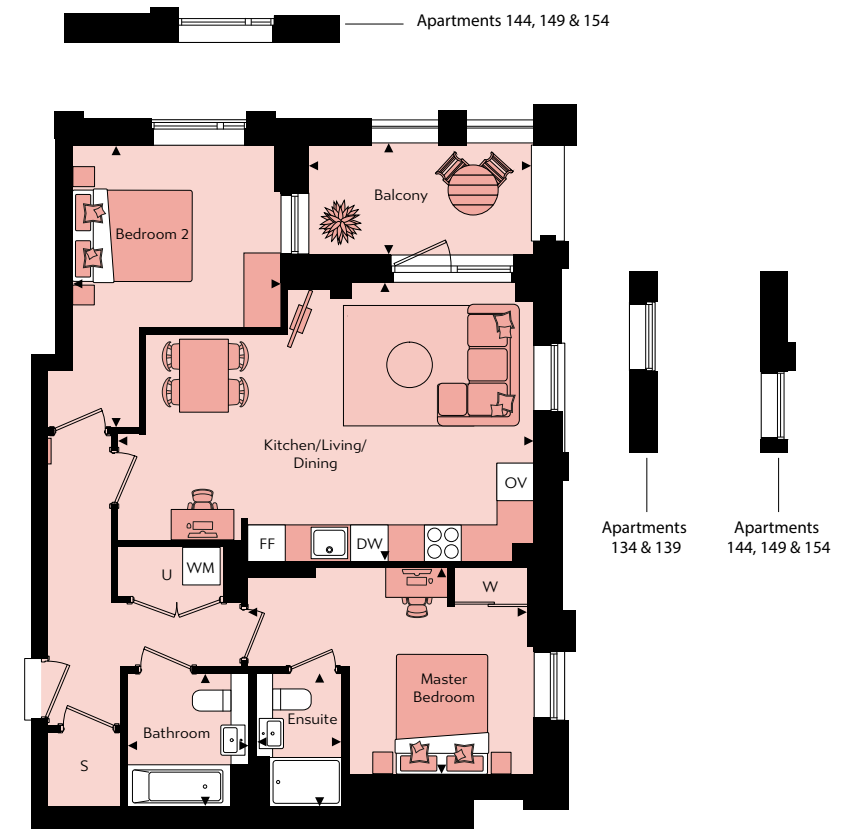
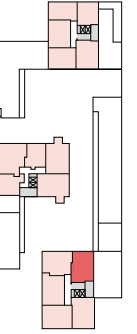
Kitchen/Living/Dining	5.57m x 6.10m	18'4" x 20'0"
Master Bedroom	2.84m x 4.20m	9'4" x 13'9"
Bedroom 2	3.35m x 3.96m	11'0" x 13'0"
Bathroom	2.19m x 2.00m	7'3" x 6'7"
En suite	1.50m x 2.20m	4'11" x 7'3"
Balcony	4.01m x 1.99m	13'2" x 6'7"



☒ - Elevator | WM - Washing Machine | FF - Fridge Freezer | DW - Dish Washer | U - Utility | S - Storage cupboard | W - Built-in wardrobe

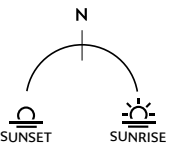
2 Bedroom Apartment

Apartments 129, 134, 139, 144, 149 & 154
Gross Internal Floor Area 73.8m² / 794ft²



Floor	Apt. No
12	154
11	149
10	144
9	139
8	134
7	129

Kitchen/Living/Dining	6.85m x 4.58m	22'6" x 15'1"
Master Bedroom	4.62m x 3.40m	15'2" x 11'2"
Bedroom 2	3.44m x 4.63m	11'4" x 15'3"
Bathroom	1.99m x 2.19m	6'7" x 7'3"
En suite	1.40m x 2.20m	3'11" x 4'1"
Balcony	3.74m x 1.84m	12'3" x 6'1"

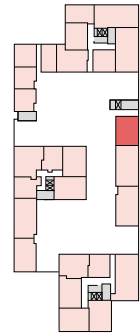


☒ - Elevator | WM - Washing Machine | FF - Fridge Freezer | DW - Dish Washer | OV - Single Tall Oven | U - Utility | S - Storage cupboard | W - Built-in wardrobe

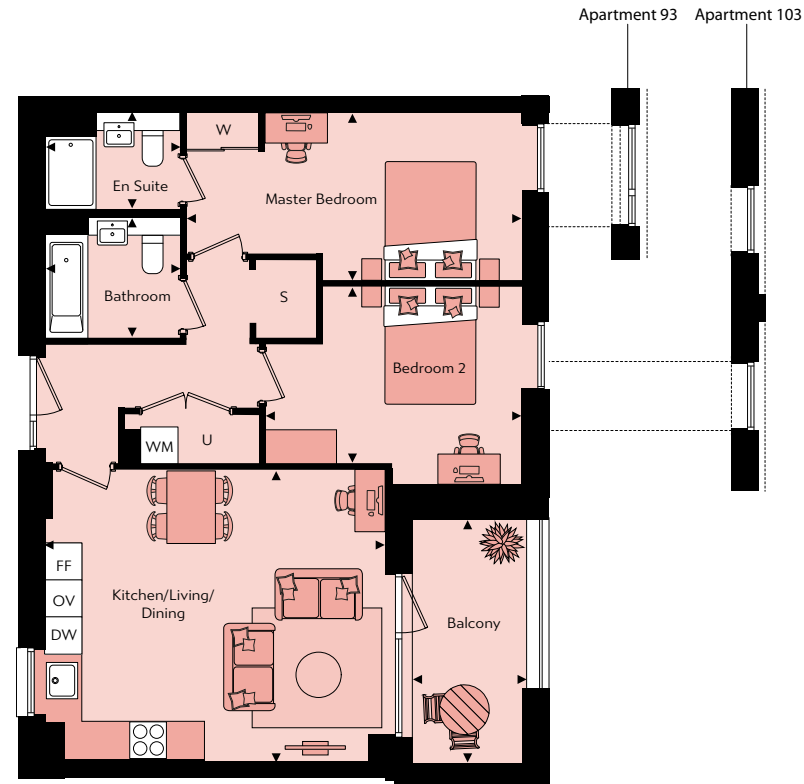
2 Bedroom Apartment

Apartments 84, 93 & 103

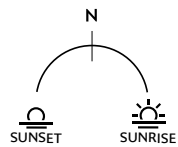
Gross Internal Floor Area 74.1m² / 797ft²



Floor	Apt. No
3	103
2	93
1	84



Kitchen/Living/Dining	5.61m x 4.84m	18'5" x 15'11"
Master Bedroom	5.54m x 2.77m	18'2" x 9'1"
Bedroom 2	4.24m x 3.28m	13'11" x 10'9"
Bathroom	2.19m x 1.99m	7'2" x 6'7"
En suite	2.19m x 1.60m	7'2" x 5'3"
Balcony	1.89m x 4.06m	6'3" x 13'4"

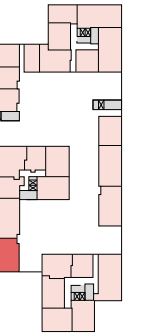


☒ - Elevator | WM - Washing Machine | FF - Fridge Freezer | DW - Dish Washer | OV - Single Tall Oven | U - Utility | S - Storage cupboard | W - Built-in wardrobe

2 Bedroom Apartment

Apartments 161, 168 & 175

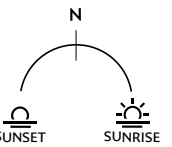
Gross Internal Floor Area 74.3m² / 799ft²



Floor	Apt. No
3	175
2	168
1	161



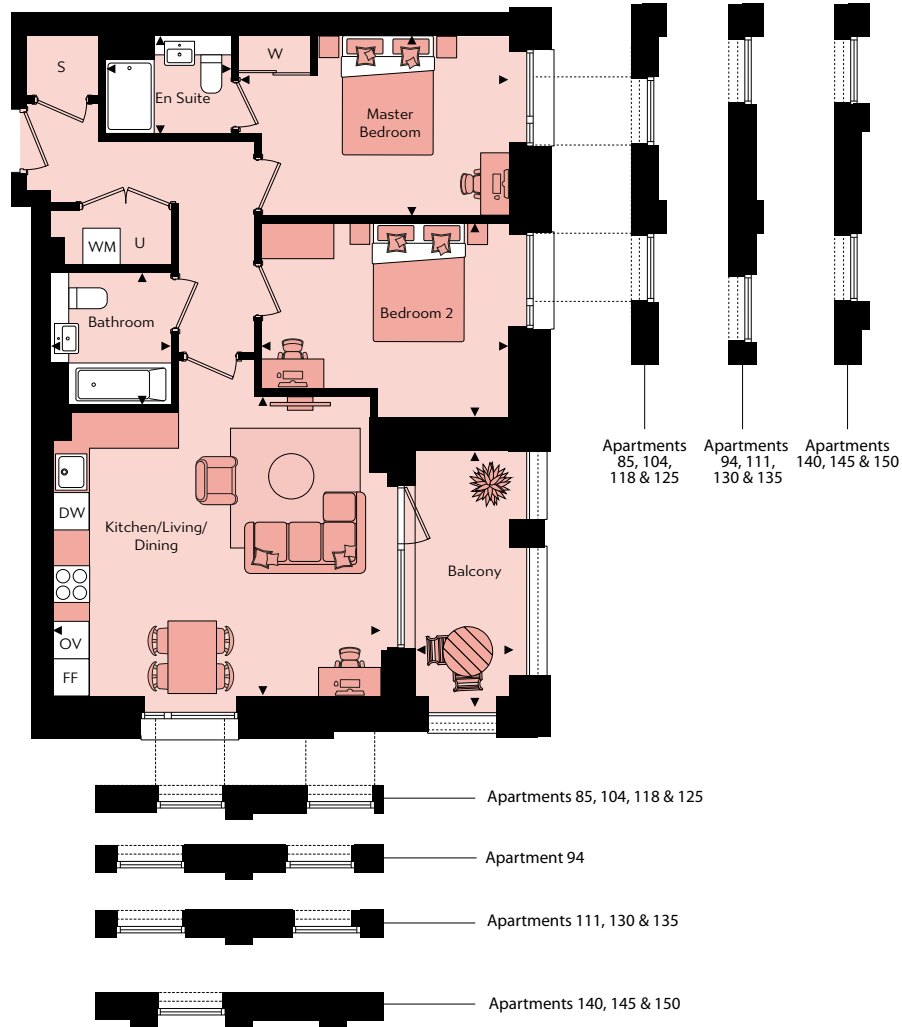
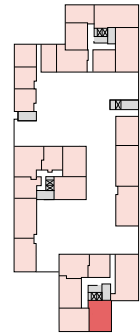
Kitchen/Living/Dining	6.70m x 5.46m	22'0" x 17'11"
Master Bedroom	2.75m x 4.75m	9'0" x 15'7"
Bedroom 2	3.15m x 3.83m	10'4" x 12'7"
Bathroom	2.20m x 1.99m	7'3" x 6'7"
En suite	2.20m x 1.50m	7'3" x 4'11"
Balcony	4.39m x 1.88m	14'5" x 6'2"



☒ - Elevator | WM - Washing Machine | FF - Fridge Freezer | DW - Dish Washer | U - Utility | S - Storage cupboard | W - Built-in wardrobe

2 Bedroom Apartment

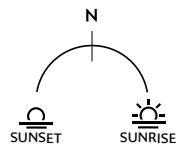
Apartments 76, 85, 94, 104, 111, 118, 125, 130, 135, 140, 145 & 150
Gross Internal Floor Area 74.5m² / 801ft²



Apartments 85, 104, 118 & 125
Apartments 94, 111, 130 & 135
Apartments 140, 145 & 150

Floor	Apt. No
12	150
11	145
10	140
9	135
8	130
7	125
6	118
5	111
4	104
3	94
2	85
1	76

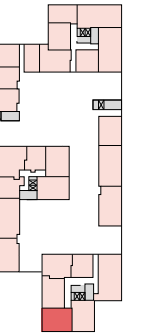
Kitchen/Living/Dining	4.97m x 5.42m	16'4" x 17'10"
Master Bedroom	3.00m x 4.48m	9'10" x 14'9"
Bedroom 2	3.22m x 4.11m	10'7" x 13'6"
Bathroom	2.22m x 2.00m	7'4" x 6'7"
En suite	1.61m x 2.09m	5'3" x 6'10"
Balcony	4.23m x 1.66m	13'11" x 5'4"



☒ - Elevator | WM - Washing Machine | FF - Fridge Freezer | DW - Dish Washer | OV - Single Tall Oven | U - Utility | S - Storage cupboard | W - Built-in wardrobe

2 Bedroom Apartment

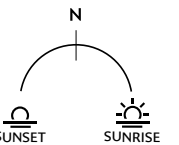
Apartments 77, 86, 95, 105, 112, 119, 126, 131, 136, 141, 146 & 151
Gross Internal Floor Area 74.6m² / 802ft²



Apt. 95
Apartments 141, 146 & 151
Apartments 119 & 126
Apartments 105, 112, 131 & 136

Floor	Apt. No
12	151
11	146
10	141
9	136
8	131
7	126
6	119
5	112
4	105
3	95
2	86
1	77

Kitchen/Living/Dining	4.17m x 5.56m	13'8" x 18'3"
Master Bedroom	2.79m x 4.80m	9'2" x 15'9"
Bedroom 2	3.40m x 3.65m	11'2" x 12'0"
Bathroom	2.19m x 1.99m	7'2" x 6'7"
En suite	1.59m x 2.08m	5'3" x 6'10"
Balcony	4.12m x 2.22m	13'6" x 7'4"



☒ - Elevator | WM - Washing Machine | FF - Fridge Freezer | DW - Dish Washer | OV - Single Tall Oven | U - Utility | S - Storage cupboard | W - Built-in wardrobe

2 Bedroom Apartment

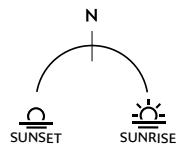
Apartments 78, 87, 96, 106, 113, 120, 127, 132, 137, 142, 147 & 152
Gross Internal Floor Area 74.6m² / 802ft²

2 Bedroom Apartment

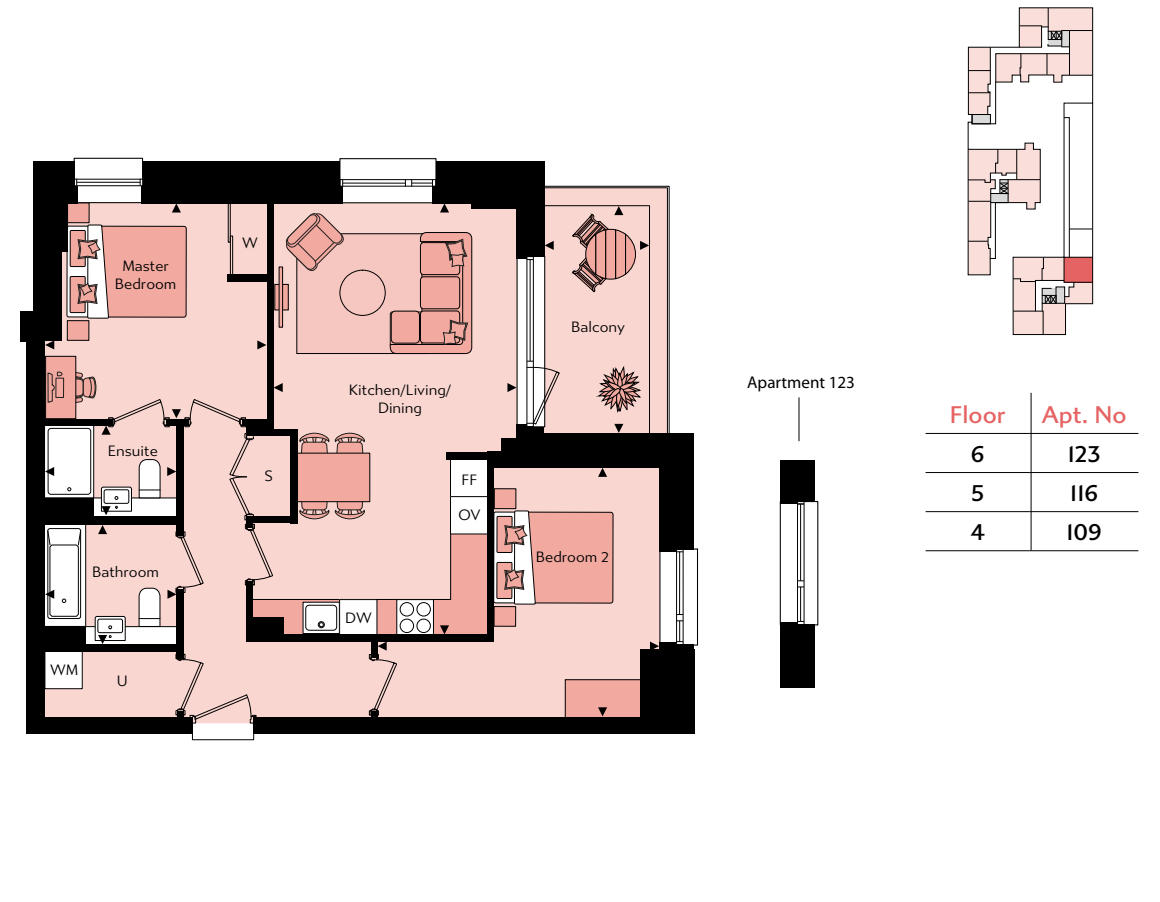
Apartments 109, 116 & 123
Gross Internal Floor Area 74.9m² / 806ft²



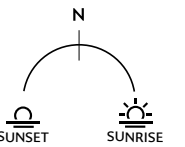
Kitchen/Living/Dining	5.28m x 5.29m	17'4" x 17'4"
Master Bedroom	3.77m x 3.49m	12'5" x 11'5"
Bedroom 2	3.77m x 3.61m	12'5" x 11'10"
Bathroom	2.00m x 2.19m	6'7" x 7'3"
En suite	1.50m x 2.20m	4'11" x 7'3"
Balcony	2.11m x 4.06m	6'11" x 13'4"



☒ - Elevator | WM - Washing Machine | FF - Fridge Freezer | DW - Dish Washer | OV - Single Tall Oven | U - Utility | S - Storage cupboard | W - Built-in wardrobe



Kitchen/Living/Dining	4.02m x 7.15m	13'3" x 23'6"
Master Bedroom	3.70m x 3.57m	12'2" x 11'9"
Bedroom 2	4.67m x 4.12m	15'4" x 13'6"
Bathroom	2.20m x 2.00m	7'3" x 6'7"
En suite	2.20m x 1.49m	7'3" x 4'11"
Balcony	1.74m x 3.76m	5'9" x 12'4"



☒ - Elevator | WM - Washing Machine | FF - Fridge Freezer | DW - Dish Washer | OV - Single Tall Oven | U - Utility | S - Storage cupboard | W - Built-in wardrobe

2 Bedroom Apartment

Apartments 165 & 172

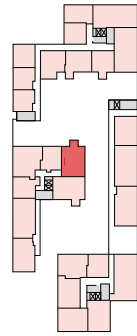
Gross Internal Floor Area 87.7m² / 943ft²



2 Bedroom Apartment

Apartment 158

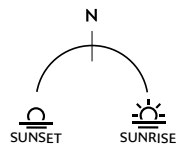
Gross Internal Floor Area 87.7m² / 943ft²



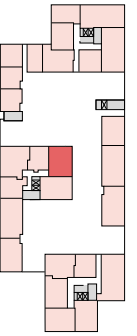
Floor	Apt. No
3	172
2	165



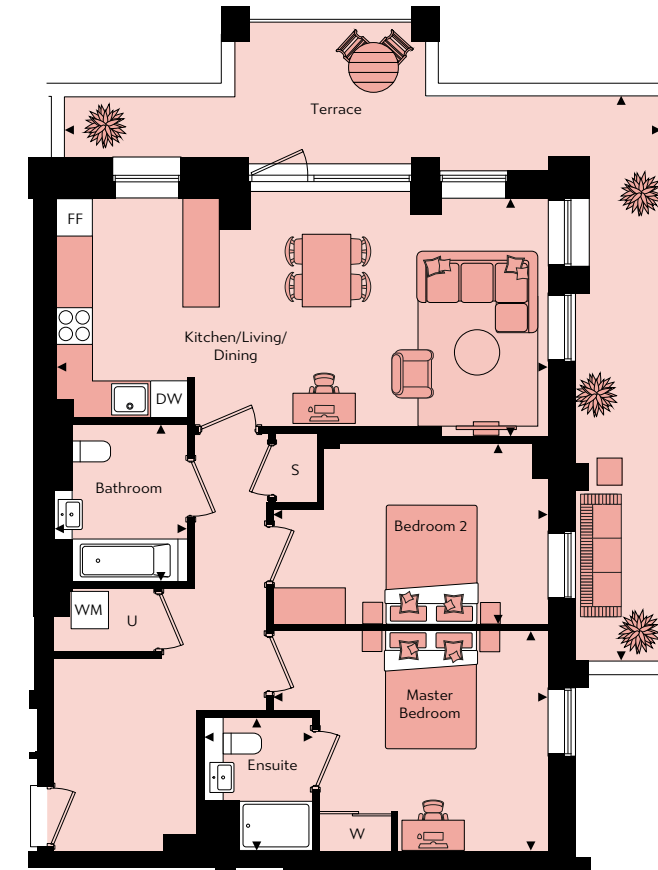
Kitchen/Living/Dining	3.95m x 8.13m	13'0" x 26'8"
Master Bedroom	3.60m x 4.55m	12'0" x 14'11"
Bedroom 2	3.00m x 4.55m	9'10" x 14'11"
Bathroom	2.59m x 2.16m	8'6" x 7'1"
En suite	2.19m x 1.79m	7'3" x 5'11"
Balcony	2.35m x 2.51m	7'9" x 9'0"



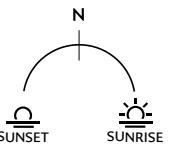
☒ - Elevator | WM - Washing Machine | FF - Fridge Freezer | DW - Dish Washer | U - Utility | S - Storage cupboard | W - Built-in wardrobe | ♿ - Wheelchair adaptable unit



Floor	Apt. No
1	158



Kitchen/Living/Dining	3.95m x 8.13m	13'0" x 26'8"
Master Bedroom	3.66m x 4.55m	12'0" x 14'11"
Bedroom 2	3.00m x 4.55m	9'10" x 14'11"
Bathroom	2.59m x 2.16m	8'6" x 7'1"
En suite	2.19m x 1.79m	7'3" x 5'11"
Terrace	9.33m x 9.86m	30'7" x 32'4"



☒ - Elevator | WM - Washing Machine | FF - Fridge Freezer | DW - Dish Washer | U - Utility | S - Storage cupboard | W - Built-in wardrobe | ♿ - Wheelchair adaptable unit

2 Bedroom Apartment

Apartments 166 & 173

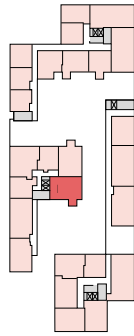
Gross Internal Floor Area 89.6m² / 964ft²



2 Bedroom Apartment

Apartment 159

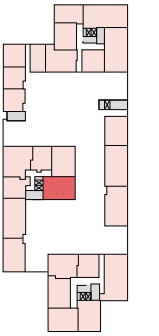
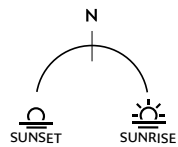
Gross Internal Floor Area 89.6m² / 964ft²



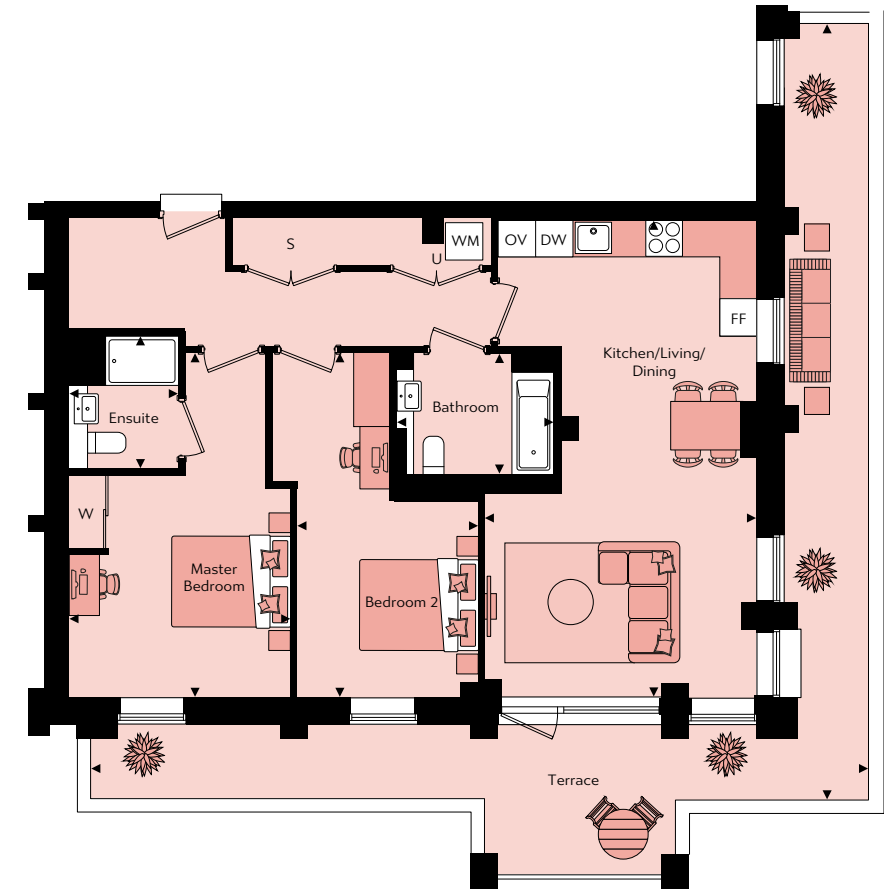
Floor	Apt. No
3	173
2	166



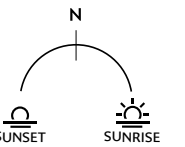
Kitchen/Living/Dining	4.49m x 7.89m	14'9" x 25'11"
Master Bedroom	3.67m x 5.69m	12'1" x 18'8"
Bedroom 2	3.00m x 5.69m	9'10" x 18'8"
Bathroom	2.59m x 2.16m	8'6" x 7'1"
En suite	2.19m x 1.79m	7'3" x 5'11"
Balcony	2.73m x 2.47m	9'0" x 8'1"



Floor	Apt. No
1	159



Kitchen/Living/Dining	4.49m x 7.89m	14'9" x 25'11"
Master Bedroom	3.67m x 5.69m	12'1" x 18'8"
Bedroom 2	3.00m x 5.69m	9'10" x 18'8"
Bathroom	2.59m x 2.16m	8'6" x 7'1"
En suite	2.19m x 1.79m	7'3" x 5'11"
Terrace	12.90m x 12.81m	42'4" x 42'1"



2 Bedroom Apartment

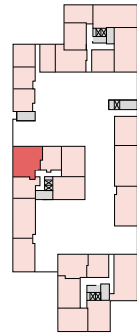
Apartment I56

Gross Internal Floor Area 93.4m² / 1,005ft²

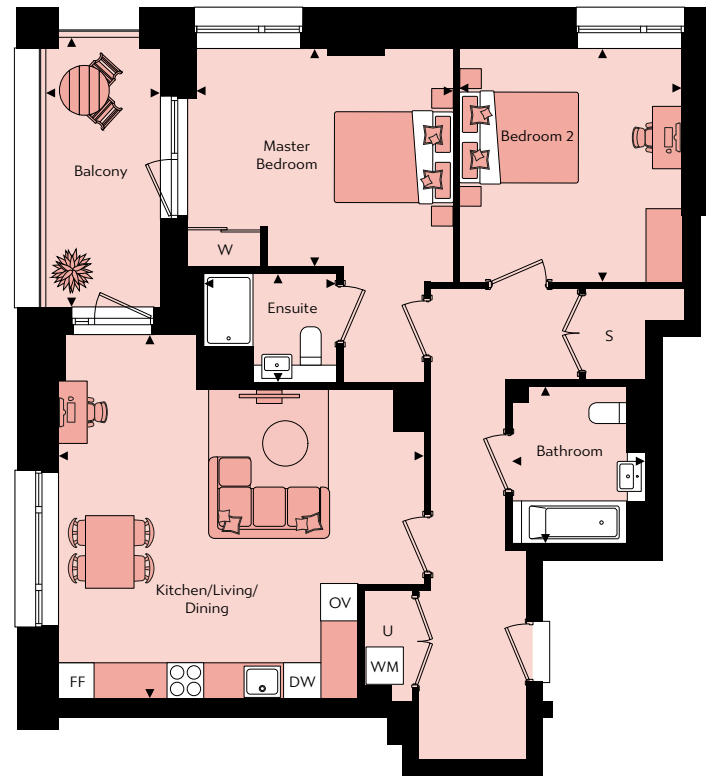


3

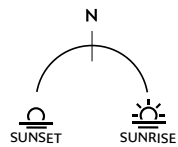
Bedroom Apartments



Floor	Apt. No
I	I56



Kitchen/Living/Dining	6.05m x 6.02m	19'10" x 19'9"
Master Bedroom	4.25m x 3.60m	13'11" x 11'10"
Bedroom 2	3.68m x 3.85m	12'1" x 12'8"
Bathroom	2.21m x 2.59m	7'3" x 8'6"
En suite	2.20m x 1.79m	7'3" x 5'11"
Balcony	1.88m x 4.47m	6'2" x 14'8"



3 Bedroom Apartment

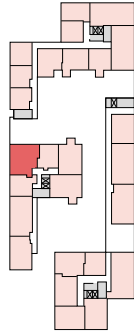
Apartments 163 & 170

Gross Internal Floor Area 93.7m² / 1,008ft²

3 Bedroom Apartment

Apartments 167 & 174

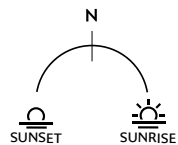
Gross Internal Floor Area 93.9m² / 1,010ft²



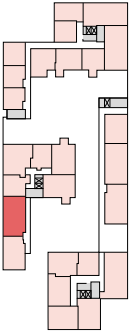
Floor	Apt. No
3	170
2	163



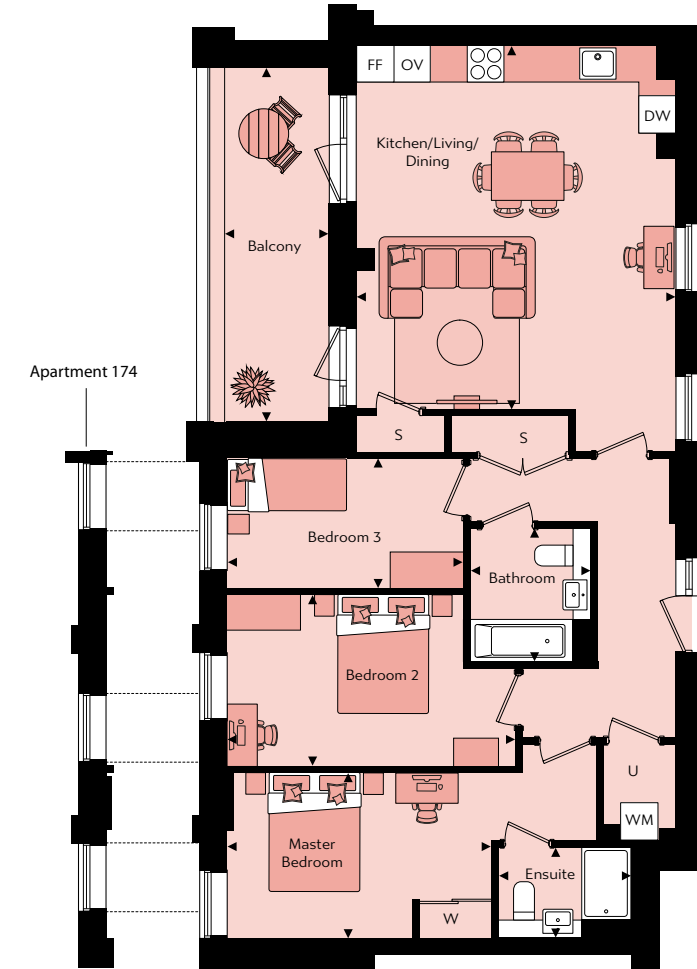
Kitchen/Living/Dining	6.15m x 6.19m	20'2" x 20'4"
Master Bedroom	2.75m x 4.45m	9'0" x 14'7"
Bedroom 2	2.78m x 4.45m	9'2" x 14'7"
Bedroom 3	2.47m x 3.29m	8'1" x 10'10"
Bathroom	2.19m x 2.00m	7'3" x 6'7"
En suite	2.19m x 1.48m	7'3" x 4'11"
Balcony	1.88m x 4.47m	6'2" x 14'8"



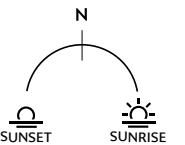
☒ - Elevator | WM - Washing Machine | FF - Fridge Freezer | DW - Dish Washer | OV - Single Tall Oven | U - Utility | S - Storage cupboard | W - Built-in wardrobe



Floor	Apt. No
3	174
2	167



Kitchen/Living/Dining	6.02m x 5.27m	19'9" x 17'4"
Master Bedroom	2.75m x 4.37m	9'0" x 14'4"
Bedroom 2	2.84m x 4.76m	9'4" x 15'8"
Bedroom 3	2.15m x 3.90m	7'1" x 12'10"
Bathroom	2.19m x 1.99m	7'3" x 6'7"
En suite	1.50m x 2.20m	4'11" x 7'3"
Balcony	5.86m x 1.73m	19'3" x 5'8"



☒ - Elevator | WM - Washing Machine | FF - Fridge Freezer | DW - Dish Washer | OV - Single Tall Oven | U - Utility | S - Storage cupboard | W - Built-in wardrobe

3 Bedroom Apartment

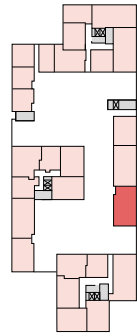
Apartments 82, 91 & 101

Gross Internal Floor Area 99.4m² / 1,069ft²

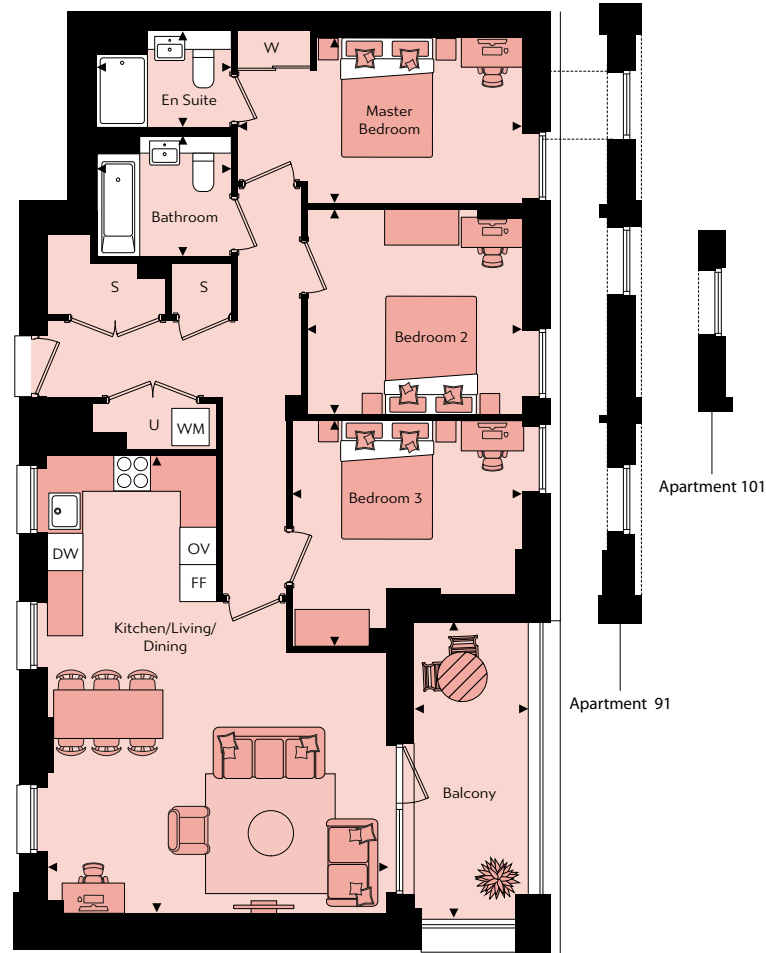
3 Bedroom Apartment

Apartments 81 & 90

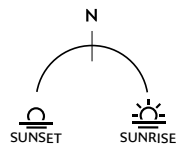
Gross Internal Floor Area 101.1m² / 1,088ft²



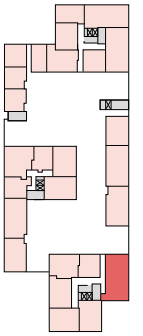
Floor	Apt. No
3	101
2	91
1	82



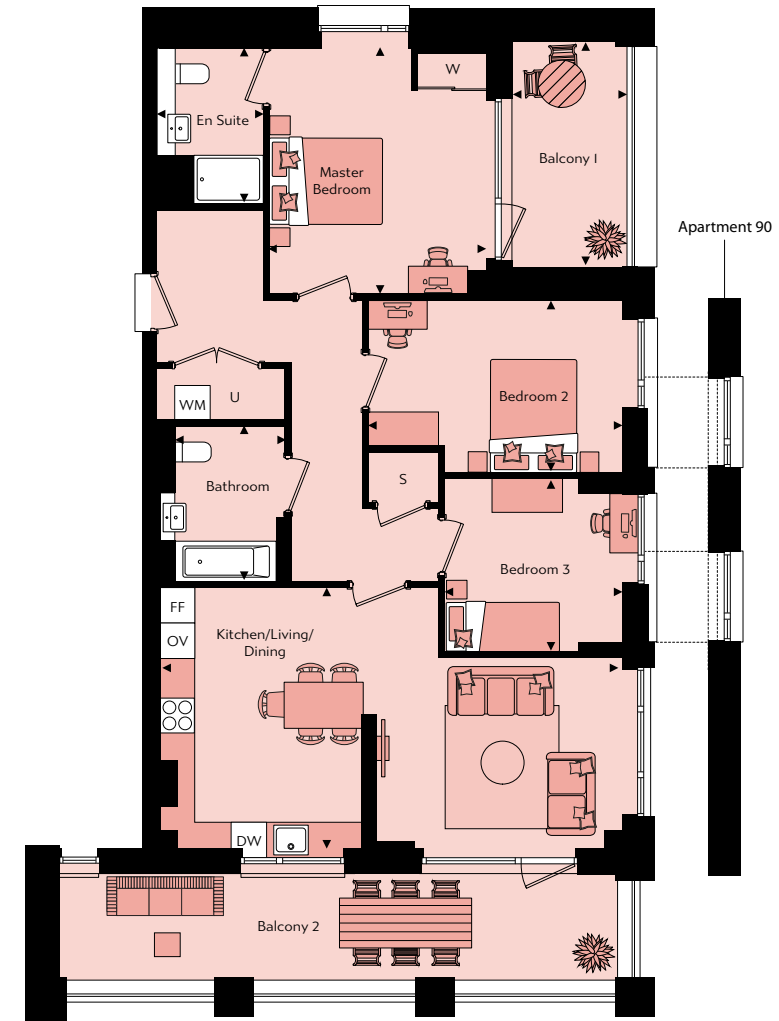
Kitchen/Living/Dining	7.58m x 5.61m	24'11" x 18'5"
Master Bedroom	2.75m x 4.71m	9'0" x 15'6"
Bedroom 2	3.40m x 3.56m	11'2" x 11'8"
Bedroom 3	3.70m x 3.81m	12'2" x 12'6"
Bathroom	2.00m x 2.20m	6'7" x 7'3"
En suite	1.59m x 2.20m	5'3" x 7'3"
Balcony	4.92m x 1.88m	16'2" x 6'2"



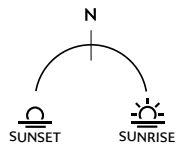
☒ - Elevator | WM - Washing Machine | FF - Fridge Freezer | DW - Dish Washer | OV - Single Tall Oven | U - Utility | S - Storage cupboard | W - Built-in wardrobe



Floor	Apt. No
2	90
1	81



Kitchen/Living/Dining	4.53m x 8.04m	14'0" x 26'5"
Master Bedroom	4.30m x 3.77m	14'1" x 12'5"
Bedroom 2	3.00m x 4.41m	9'10" x 14'6"
Bedroom 3	3.01m x 3.08m	9'11" x 10'1"
Bathroom	2.68m x 2.20m	8'10" x 7'3"
En suite	2.70m x 1.83m	8'10" x 6'0"
Balcony 1	3.94m x 2.00m	12'11" x 6'7"
Balcony 2	1.84m x 9.72m	6'1" x 31'11"



☒ - Elevator | WM - Washing Machine | FF - Fridge Freezer | DW - Dish Washer | OV - Single Tall Oven | U - Utility | S - Storage cupboard | W - Built-in wardrobe

3 Bedroom Apartment

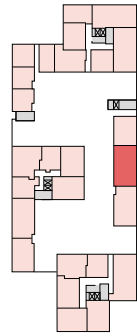
Apartments 83, 92 & 102

Gross Internal Floor Area 101.3m² / 1,090ft²

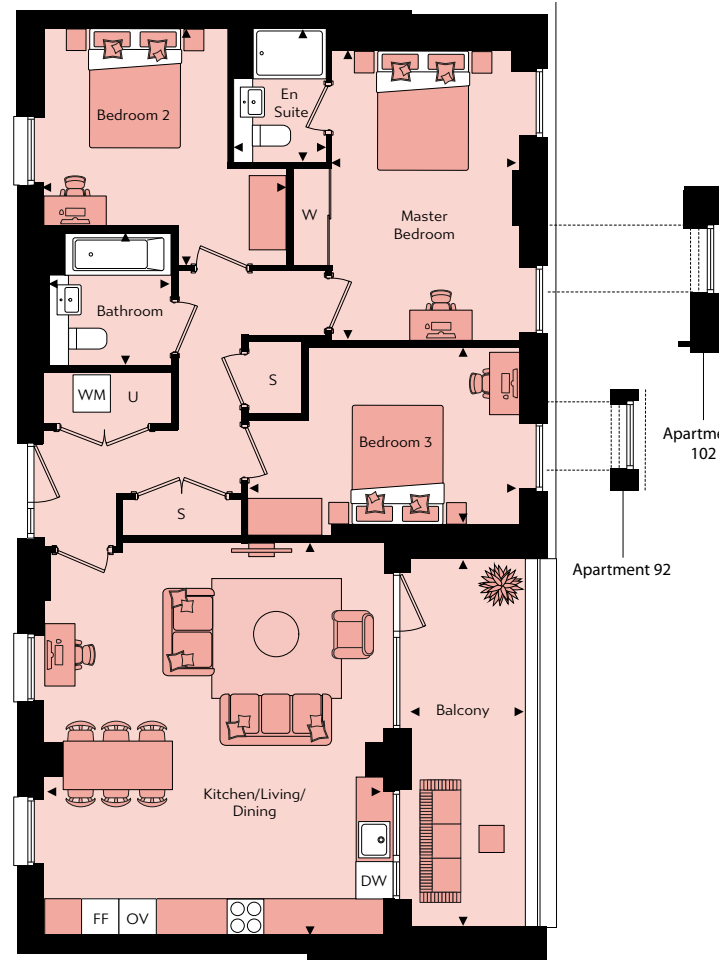
3 Bedroom Apartment

Apartment 160

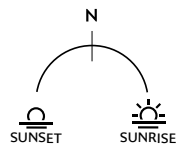
Gross Internal Floor Area 101.3m² / 1,090ft²



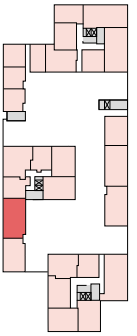
Floor	Apt. No
3	102
2	92
1	83



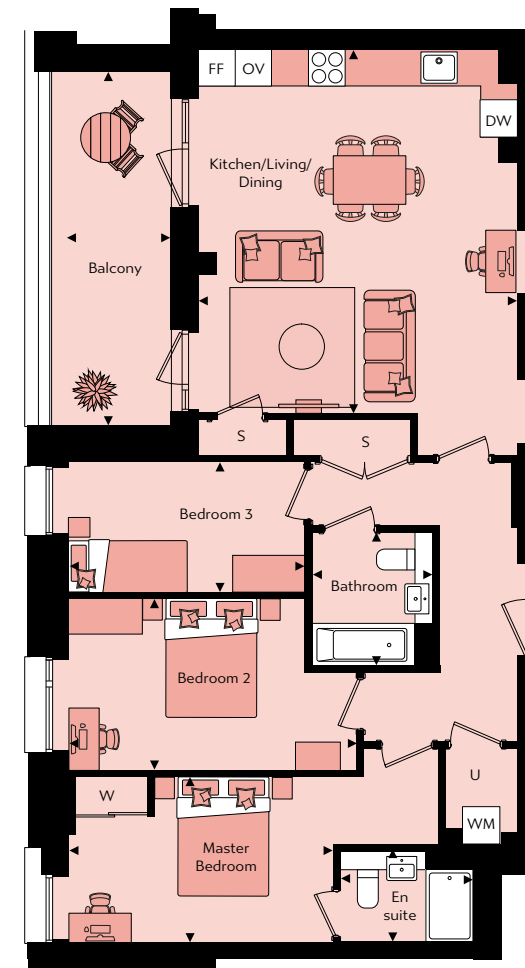
Kitchen/Living/Dining	6.50m x 5.61m	21'4" x 18'5"
Master Bedroom	4.81m x 3.10m	15'9" x 10'2"
Bedroom 2	3.91m x 4.01m	12'10" x 13'2"
Bedroom 3	3.12m x 4.49m	10'3" x 14'9"
Bathroom	2.19m x 2.00m	7'2" x 6'7"
En suite	2.18m x 1.50m	7'2" x 4'11"
Balcony	6.08m x 1.88m	2'0" x 6'2"



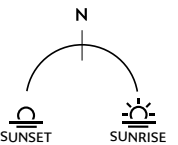
☒ - Elevator | WM - Washing Machine | FF - Fridge Freezer | DW - Dish Washer | OV - Single Tall Oven | U - Utility | S - Storage cupboard | W - Built-in wardrobe



Floor	Apt. No
1	160



Kitchen/Living/Dining	6.02m x 5.27m	19'9" x 17'4"
Master Bedroom	2.75m x 6.11m	9'0" x 20'1"
Bedroom 2	2.84m x 4.76m	9'4" x 15'8"
Bedroom 3	2.13m x 3.90m	7'1" x 12'10"
Bathroom	2.20m x 2.00m	7'3" x 6'7"
En suite	1.50m x 2.00m	4'11" x 6'7"
Balcony	5.86m x 1.74m	19'3" x 5'9"



☒ - Elevator | WM - Washing Machine | FF - Fridge Freezer | DW - Dish Washer | OV - Single Tall Oven | U - Utility | S - Storage cupboard | W - Built-in wardrobe

southmere.co.uk

Selling Agent **CBRE**

Every care has been taken in the preparation of this brochure. The details contained herein are for guidance only and should not be relied upon as exactly describing any of the particular material illustrated or written by any order under the Consumer Protection from Unfair Trading Regulations 2008. This information does not constitute a contract, part of a contract or warranty. Dimensions, which are taken from the indicated points of measurement, are for guidance only and are not intended to be used for carpet sizes, appliance space or items of furniture. We work towards 5% tolerance. Apartment areas are provided as gross internal areas and may vary. Bathroom and kitchen layouts are indicative only and are subject to change. Wardrobe size and position may vary. Ceiling height may vary within select apartments. All balcony/terrace dimensions and areas are approximate and may vary. The developer operates a programme of continuous product development. Features, internal and external, may vary from time to time and may differ from those shown in the brochure. Southmere is a marketing name and may not form part of the postal address for these properties. Information correct as of February 2022.

