



MALVERN HOUSE

Windsor Apartments

AT PRINCE OF WALES DRIVE

Metropolitan by Nature

MALVERN HOUSE

at Prince of Wales Drive comprises thirty five highly desirable one and two bedroom apartments available to buy through Shared Ownership from Latimer Homes

Windsor Apartments

AT PRINCE OF WALES DRIVE

Homes at Windsor Apartments are in a unique position just 180 meters from one of London's finest riverside parks. Battersea Park provides an oasis of calm in Prime Central London's fastest-developing and most dynamic quarter. In addition, the development benefits from 2.5 acres of new, landscaped, public open space featuring pedestrian access to Battersea Park through its own reclaimed railway arch.

This Photograph

Looking north east towards Elmbriidge House in the foreground and Malvern House in the background



THE DEVELOPMENT

Contemporary by Nature

Windsor Apartments homes at Prince of Wales Drive are situated in a prime location at the heart of the extensive regeneration of Battersea. Formerly occupied by Victorian gas holders alongside the iconic Battersea Power Station, the area has today been transformed with highly considered architecture, which mindfully honours its industrial past.

The aesthetic design is balanced harmoniously with extensive landscaped communal gardens that introduce an appealing corridor of natural tranquility.

A home at Windsor Apartments strikes the perfect balance in providing all of the advantages of city living within the beautiful surroundings of a contemporary residential complex set amongst landscaped gardens.

Location Map



UNDERGROUND, OVERGROUND AND ACROSS THE WATER

New homes at Windsor Apartments are served by excellent travel connections. Battersea Power Station, just six minutes walk from the development, is the newest station on the underground network. From here direct trains will take you on the Northern Line to Tottenham Court Road and Camden Town in under 20 minutes.

The closest rail station is Battersea Park, connecting you to Victoria in just 10 minutes, and with Queenstown Road Station 11 minutes walk away and Clapham Junction and Vauxhall all within striking distance, there are plenty of routes available.

The development is also a stone's throw from Battersea Power Station Pier. The River Bus service can speed commuters up the Thames to Blackfriars in 20 minutes and Embankment in just 15. For local hops, Prince of Wales Drive is also extremely well served by cycling routes, buses and taxis – just 8 minutes by taxi to Sloane Square!

BATTERSEA POWER STATION NOW OPEN

Battersea Power Station is a new London Underground Station which opened in Autumn 2021 as part of the ongoing Northern Line Extension. The new station places residents just a few minutes' walk from the tube network and its connections to the Capital and beyond.



Tube map of Northern Line extension. Source www.tfl.gov.uk



This Photograph
The new Northern Line extension at Battersea Power Station



Travel By Taxi

Sloane Square
8 mins

Clapham Common
10 mins

The V&A Museum
South Kensington
12 mins

Covent Garden
22 mins

NOTE: All travel times start from Windsor Apartments except travel times by London Underground, which are taken from Battersea Power Station Underground Station on the Northern Line and by River Bus, which are taken from Battersea Power Station Pier. Travel times sourced from google.com/maps



Travel By Bicycle

Vauxhall Station
6 mins

Battersea Square
9 mins

Hyde Park,
The Serpentine
18 mins

London Bridge
23 mins

Regents Park
29 mins



Travel By London Underground

Waterloo
Underground Station
8 mins

Leicester Square
Underground Station
12 mins

Tottenham Court Road
Underground Station
13 mins

Euston
Underground Station
17 mins

Kings Cross
Underground Station
24 mins

Change at Leicester Square to Piccadilly Line

SPECIFICATION

The homes at Windsor Apartments have been designed to a high standard with great care and attention given to all aspects of specification, fit and finish.

Whilst every effort has been taken to ensure the accuracy of the information provided it has been supplied as a guide and Latimer Homes reserves the right to amend the specification as necessary and without notice.



Windsor Apartments Radley House show home, indicative only

Kitchen

- Paula Rosa base and wall units in Matt White
- Stolz worktop in Silestone Grey Expo
- Splashback panel in Graphite Gloss laminate
- Stainless steel 1.5 bowl sink
- Chrome Hansgrohe Ecosmart single lever mixer tap

Appliances

- Hotpoint stainless steel single electric oven
- Hotpoint black four-ring ceramic hob
- Hotpoint stainless steel chimney style cooker hood
- Hotpoint free-standing washer/dryer
- Hotpoint integrated fridge freezer



Windsor Apartments Radley House show home, indicative only

General / Living Areas

- Kaindl Chelsea Hickory wood-effect laminate flooring to kitchen / living / dining area and hallway
- Hard wearing satin brilliant white paint finish to joinery
- Roller blind system in grey to windows and balcony doors (where applicable)
- Chrome ironmongery throughout
- Matt brilliant white paint finish to walls and ceilings
- Composite decking to balconies



Windsor Apartments Elmbridge House show home, indicative only

Heating, Security and Peace of Mind

- Underfloor heating throughout
- Audio/video door entry system

Bedroom(s)

- Clarendon Chancellor Range carpet in grey
- Roller blind system in down to windows and balcony doors (where applicable)

Whilst every effort has been taken to ensure the accuracy of the information provided it has been supplied as a guide and Latimer Homes reserves the right to amend the specification as necessary and without notice.



Windsor Apartments Radley House show home, indicative only

Bathroom

- Villeroy & Boch white bathroom suite
- Hansgrohe basin and bath mixer taps
- Croma shower kit over bath
- Full size Kaldewei bath
- Pivoted glass bath screen
- Heated chrome ladder style towel rail
- Wide Fog ceramic tiling to floor (full height around bath, splashback above wash basin)
- Holz wood effect bath and vanity panels
- Vanity countertop in Signal Black

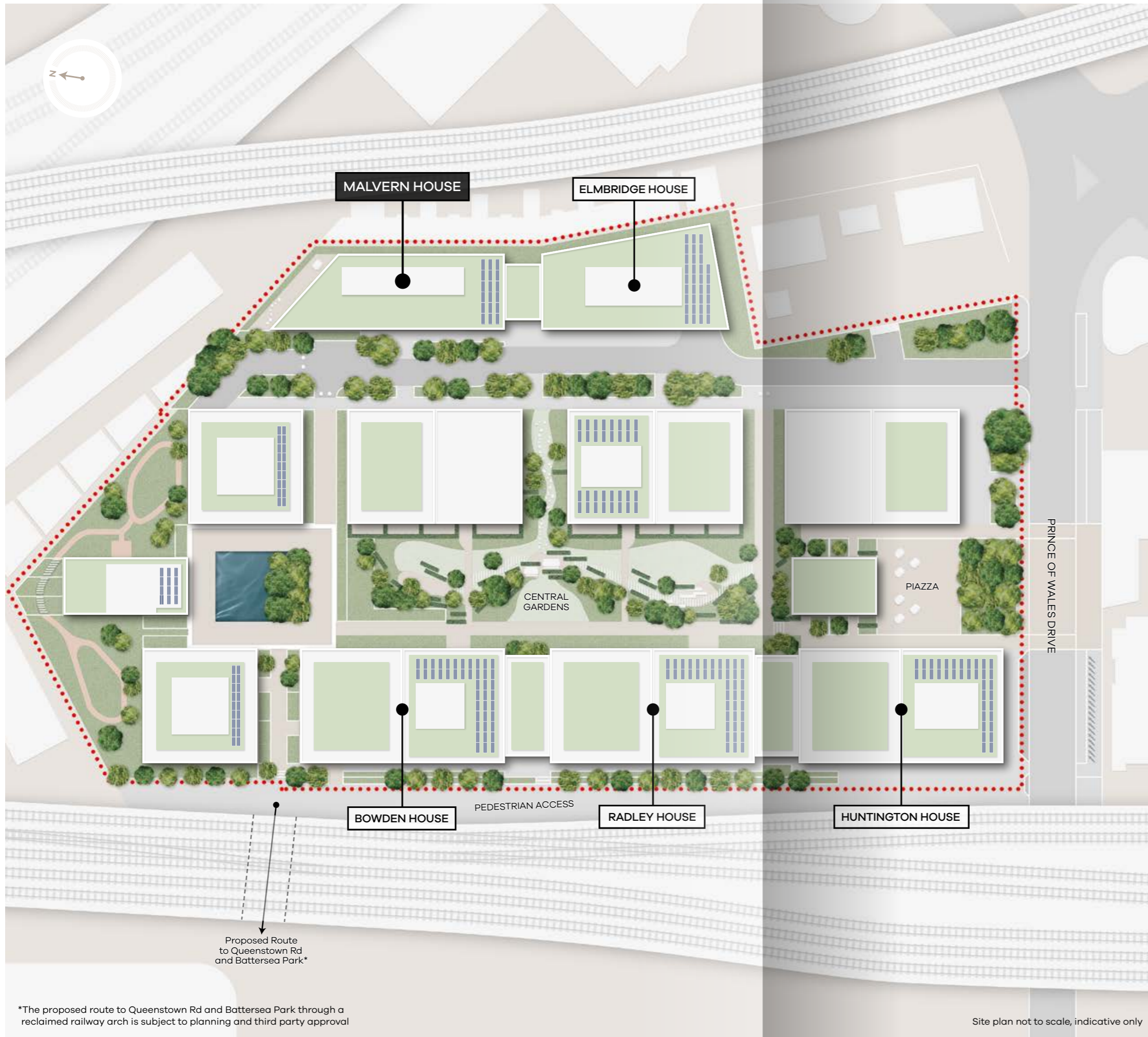
THE SITE PLAN

Windsor Apartments at Prince of Wales Drive

The layout and design of the development incorporates light and inviting communal open spaces including a piazza, café and ornamental pond. These 2.5 acres of landscaped gardens are set against a modern, well-appointed architectural backdrop to striking effect.

As part of a mixed-tenure development, Windsor Apartments are available for sale through the Shared Ownership scheme with Latimer Homes and has both excellent public transport links and easy access to cycle routes.

Residents will have the advantage of a free 12-month membership of the local Car Club - please speak to your sales agent for further information.



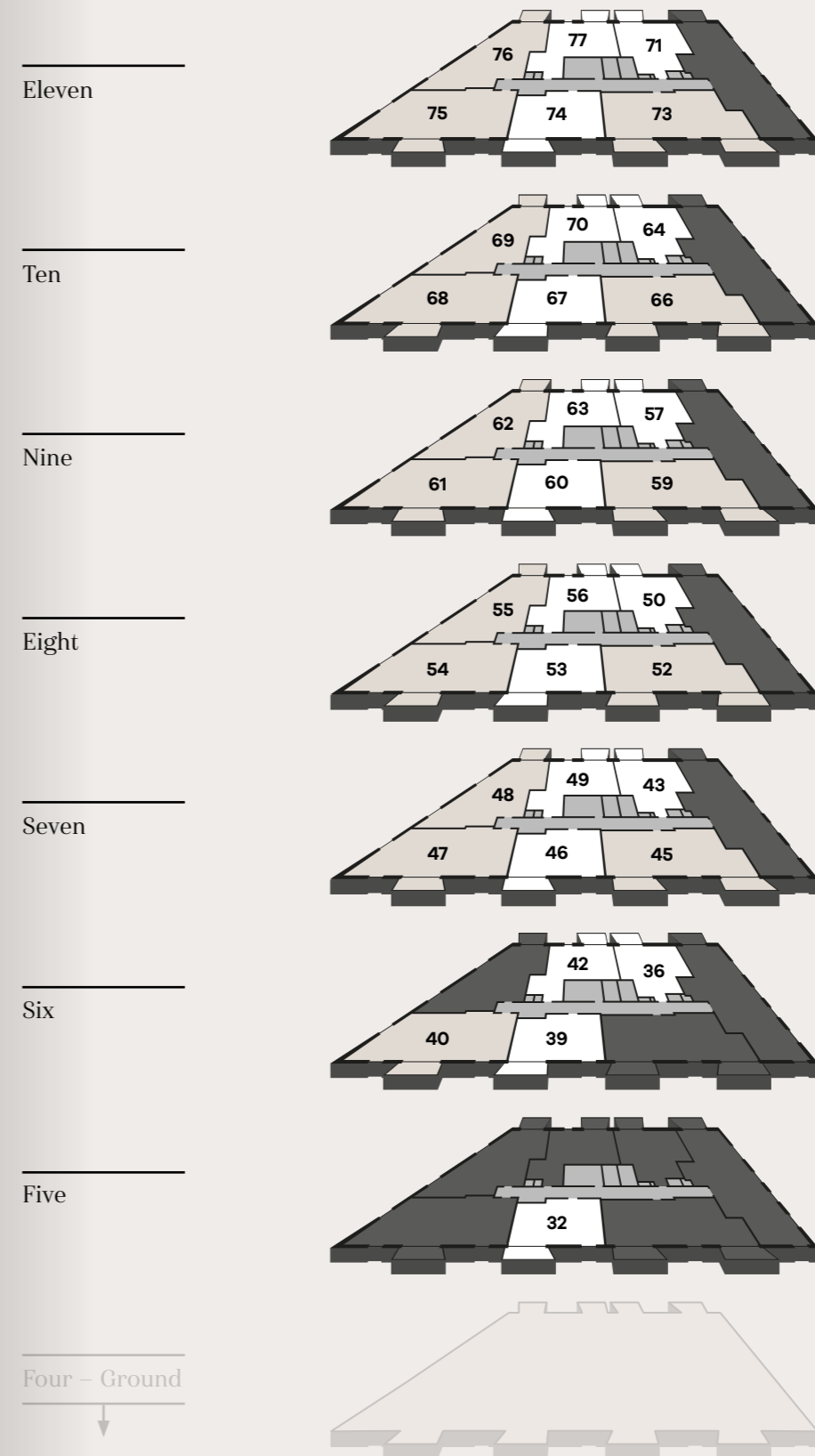
*The proposed route to Queenstown Rd and Battersea Park through a reclaimed railway arch is subject to planning and third party approval

Site plan not to scale, indicative only

The Floorplans

MALVERN HOUSE

Windsor Apartments Shared Ownership homes at Malvern House are located on floors five to eleven.

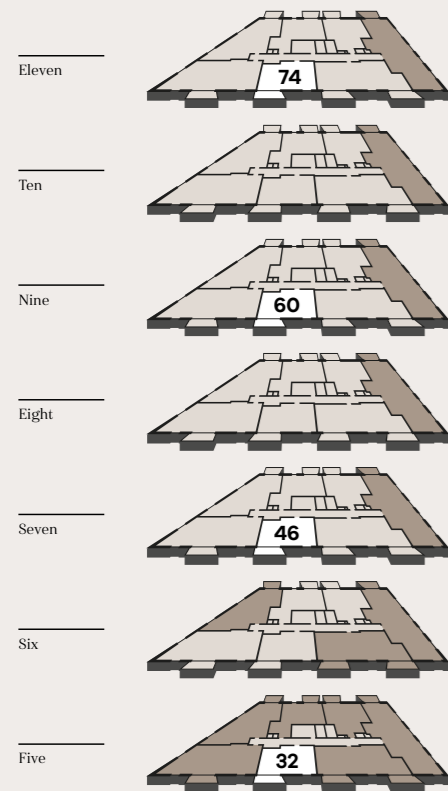


STACKER KEY

- Windsor Apartments One Bedroom Apartment Two Bedroom Apartment
- Intermediate Rented Apartments

32, 46, 60 & 74

One Bedroom Apartment with Balcony



Dimensions	M	FT
Living/Dining Room	5.44 x 4.52	17'10" x 14'10"
Kitchen	3.04 x 3.27	10'0" x 10'9"
Bedroom	3.75 x 3.47	12'4" x 11'5"
Balcony	4.55 x 1.57	14'11" x 5'2"
Total Area	52.13m²	561ft²

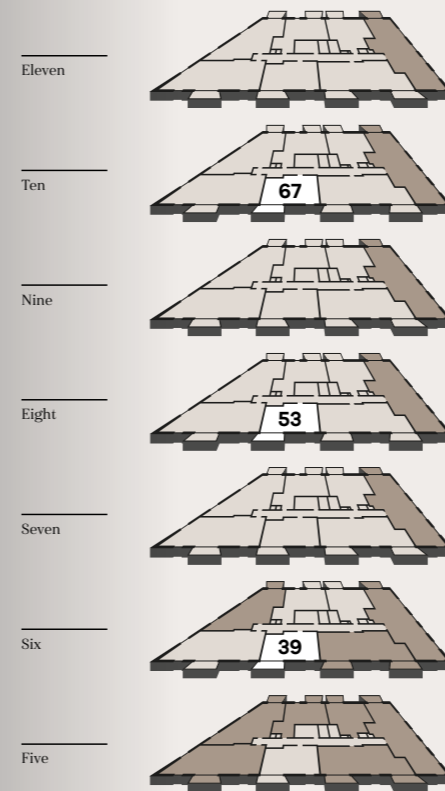
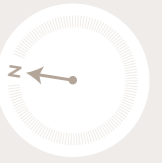
FLOORPLAN KEY

- UC Utility Cupboard (incl. heat interchange unit)
- S Store Cupboard
- WD Washer/Dryer
- ▶ Measurement point

NOTE: Blanked out window in bedroom

39, 53 & 67

One Bedroom Apartment with Balcony



Dimensions	M	FT
Living/Dining Room	5.44 x 4.52	17'10" x 14'10"
Kitchen	3.04 x 3.27	10'0" x 10'9"
Bedroom	3.75 x 3.47	12'4" x 11'5"
Balcony	4.55 x 1.57	14'11" x 5'2"
Total Area	52.13m²	561ft²

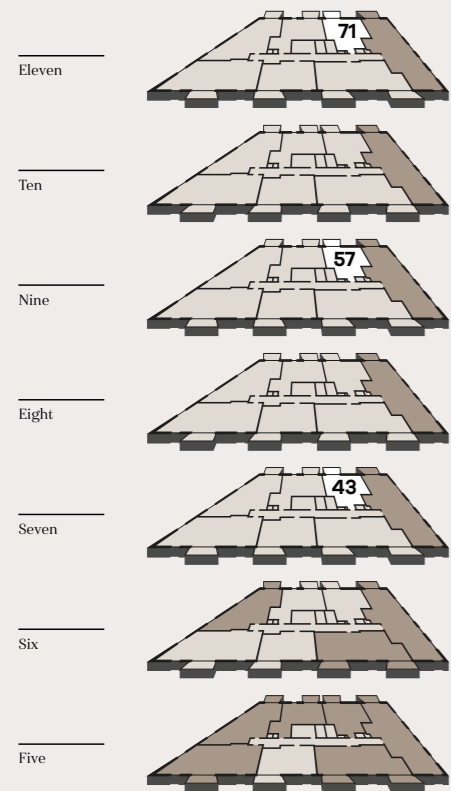
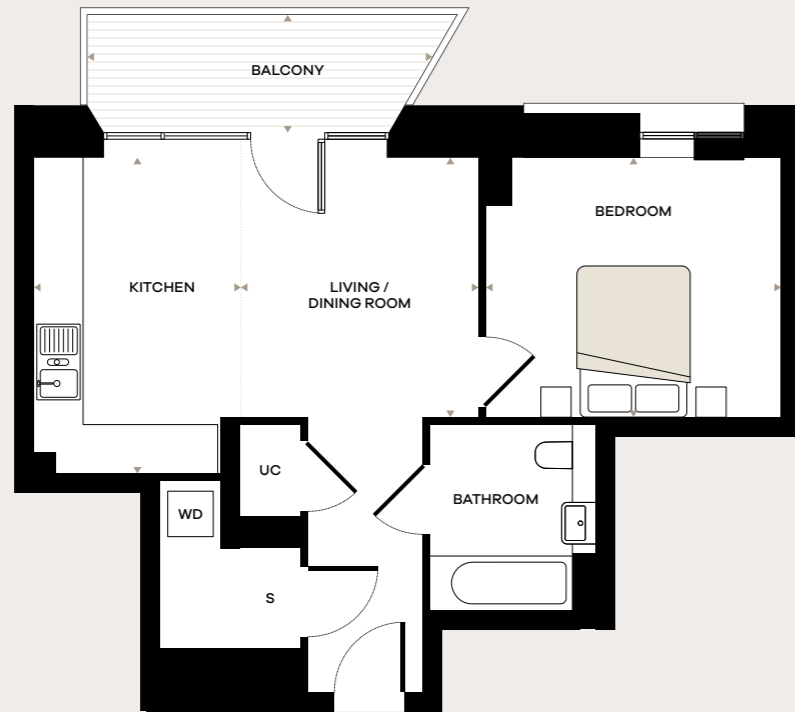
FLOORPLAN KEY

- UC Utility Cupboard (incl. heat interchange unit)
- S Store Cupboard
- WD Washer/Dryer
- ▶ Measurement point

NOTE: Blanked out window in bedroom

43, 57 & 71

One Bedroom Apartment with Balcony



Dimensions	M	FT
Living/Dining Room	3.43 x 3.14	11'3" x 10'4"
Kitchen	4.18 x 2.74	13'9" x 9'0"
Bedroom	3.43 x 3.90	11'3" x 12'10"
Balcony	4.55 x 1.57	14'11" x 5'2"
Total Area	54.09m²	582ft²

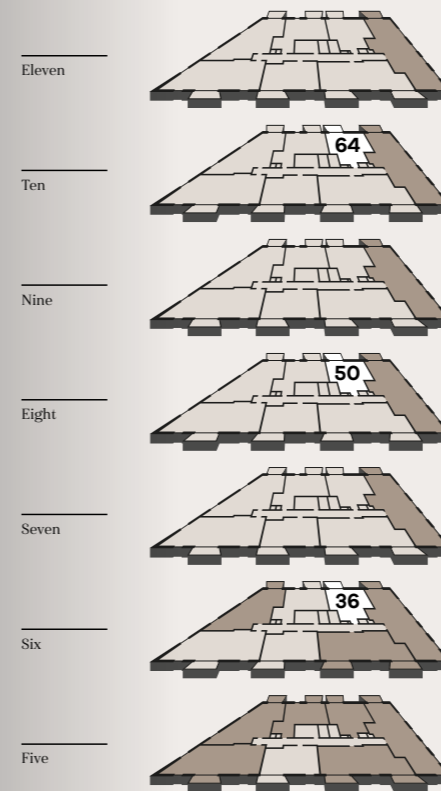
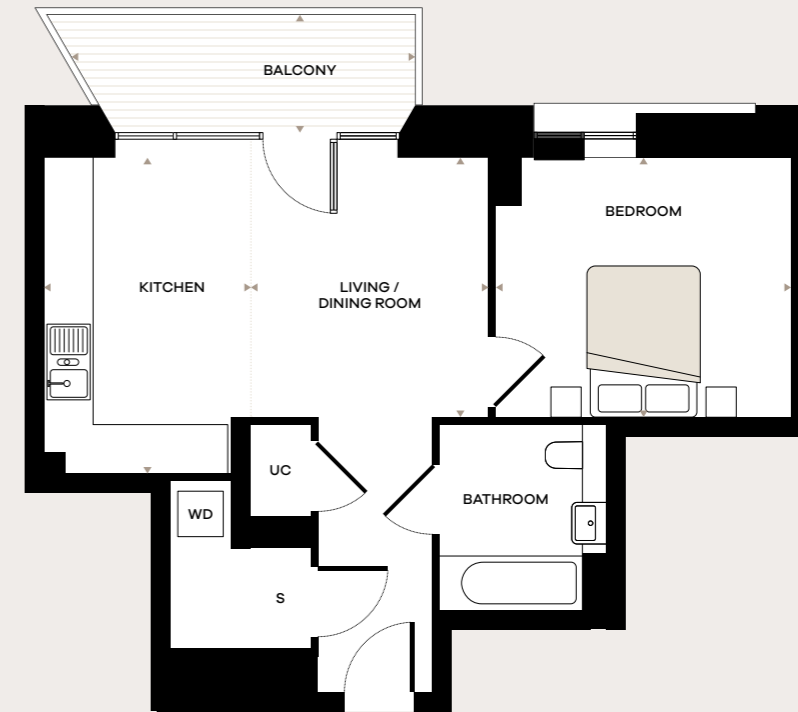
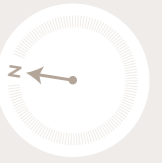
FLOORPLAN KEY

- UC Utility Cupboard (incl. heat interchange unit)
- S Store Cupboard
- WD Washer/Dryer
- ▶ Measurement point

NOTE: Blanked out window and acoustic louvre in bedroom

36, 50 & 64

One Bedroom Apartment with Balcony



Dimensions	M	FT
Living/Dining Room	3.43 x 3.14	11'3" x 10'4"
Kitchen	4.18 x 2.74	13'9" x 9'0"
Bedroom	3.43 x 3.90	11'3" x 12'10"
Balcony	4.55 x 1.57	14'11" x 5'2"
Total Area	54.58m²	587ft²

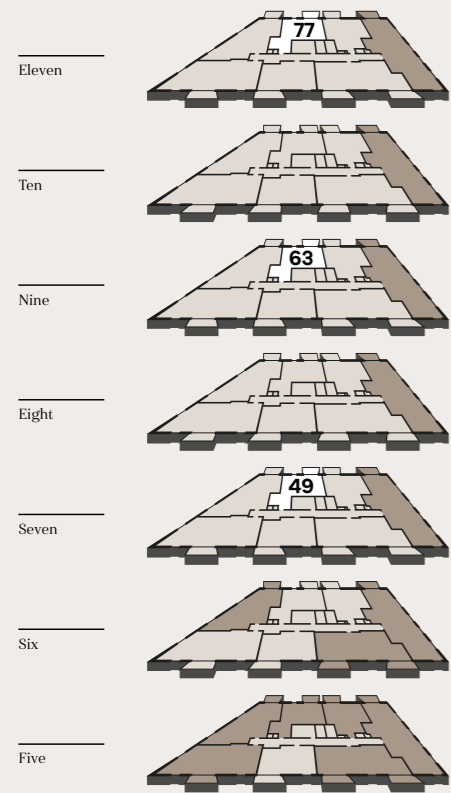
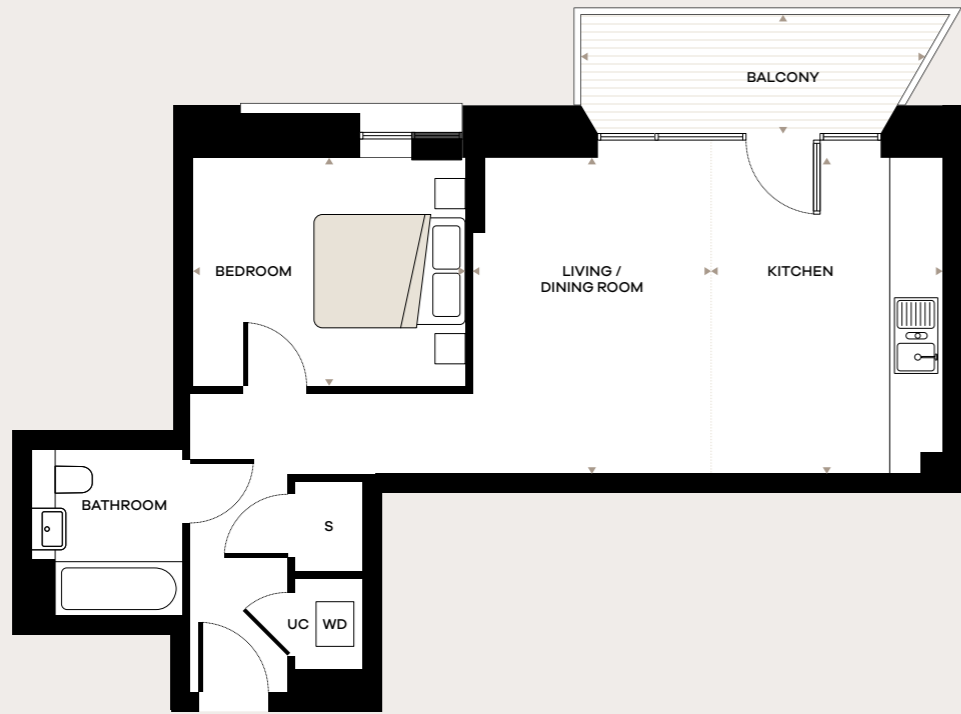
FLOORPLAN KEY

- UC Utility Cupboard (incl. heat interchange unit)
- S Store Cupboard
- WD Washer/Dryer
- ▶ Measurement point

NOTE: Blanked out window and acoustic louvre in bedroom

49, 63 & 77

One Bedroom Apartment with Balcony



Dimensions	M	FT
Living/Dining Room	4.18 x 3.13	13'9" x 10'3"
Kitchen	3.06 x 4.18	10'1" x 13'9"
Bedroom	3.60 x 3.01	11'10" x 9'11"
Balcony	4.55 x 1.57	14'11" x 5'2"
Total Area	53.99m²	581ft²

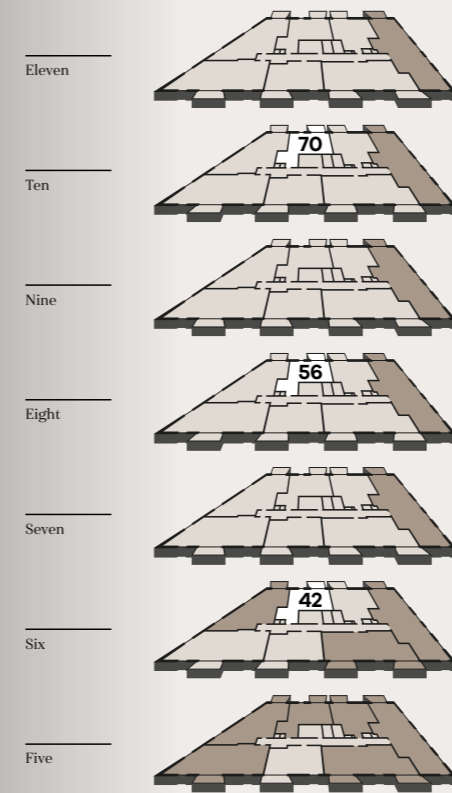
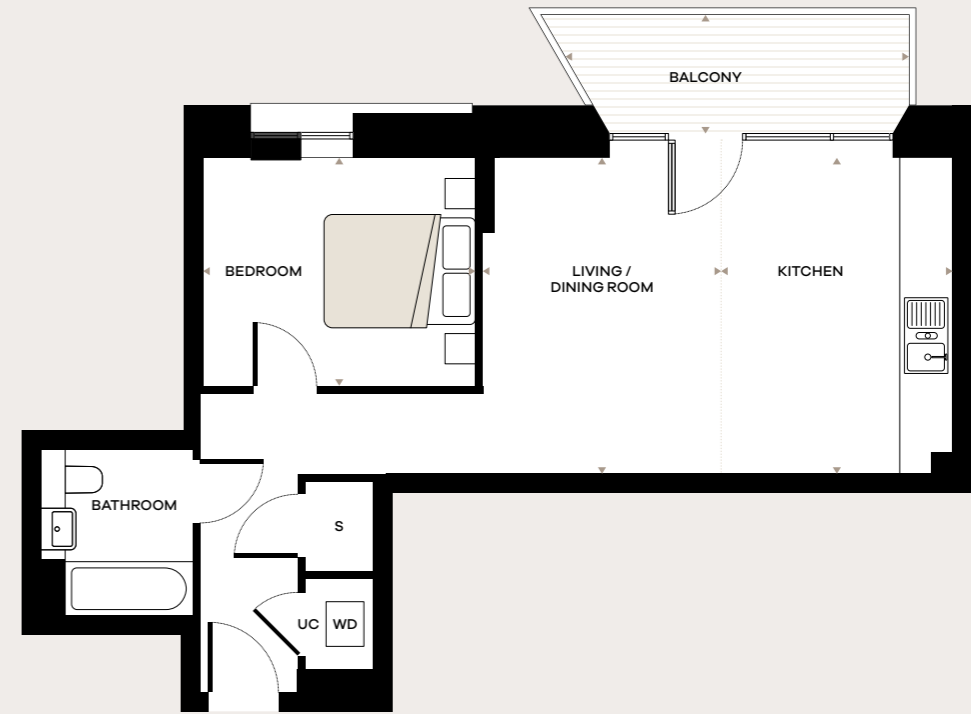
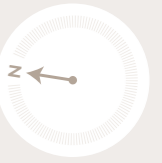
FLOORPLAN KEY

UC Utility Cupboard (incl. heat interchange unit) S Store Cupboard
 WD Washer/Dryer
 ▶ Measurement point

NOTE: Blanked out window and acoustic louvre in bedroom

42, 56 & 70

One Bedroom Apartment with Balcony



Dimensions	M	FT
Living/Dining Room	4.18 x 3.13	13'9" x 10'3"
Kitchen	3.06 x 4.18	10'1" x 13'9"
Bedroom	3.60 x 3.01	11'10" x 9'11"
Balcony	4.55 x 1.57	14'11" x 5'2"
Total Area	53.99m²	581ft²

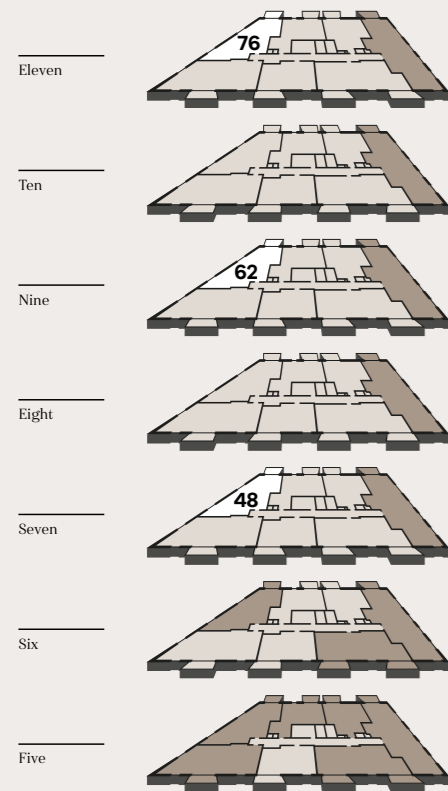
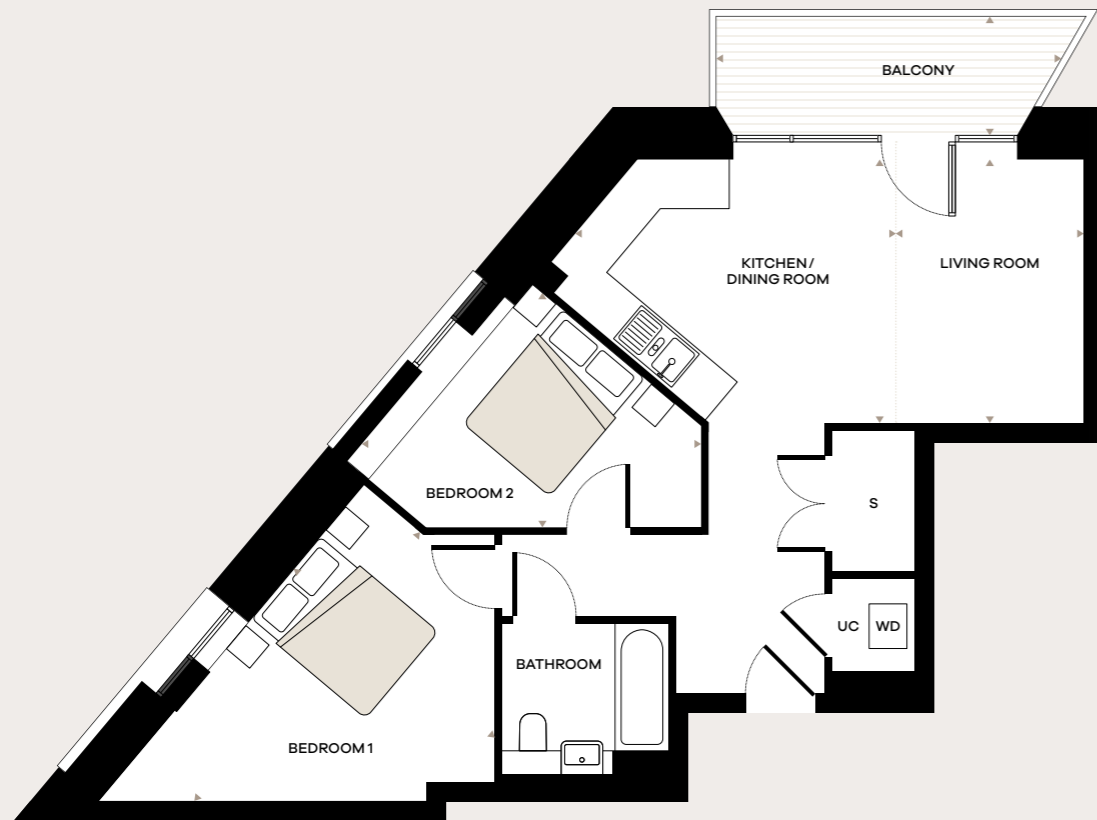
FLOORPLAN KEY

UC Utility Cupboard (incl. heat interchange unit) S Store Cupboard
 WD Washer/Dryer
 ▶ Measurement point

NOTE: Blanked out window and acoustic louvre in bedroom

48, 62 & 76

Two Bedroom Apartment with Balcony



Dimensions	M	FT
Living Room	3.49 x 2.48	11'5" x 8'2"
Kitchen/Dining Room	4.24 x 3.49	13'11" x 11'5"
Bedroom 1	4.64 x 3.47	15'3" x 11'5"
Bedroom 2	4.49 x 3.10	14'9" x 10'2"
Balcony	4.55 x 1.57	14'11" x 5'2"
Total Area	64.91m²	699ft²

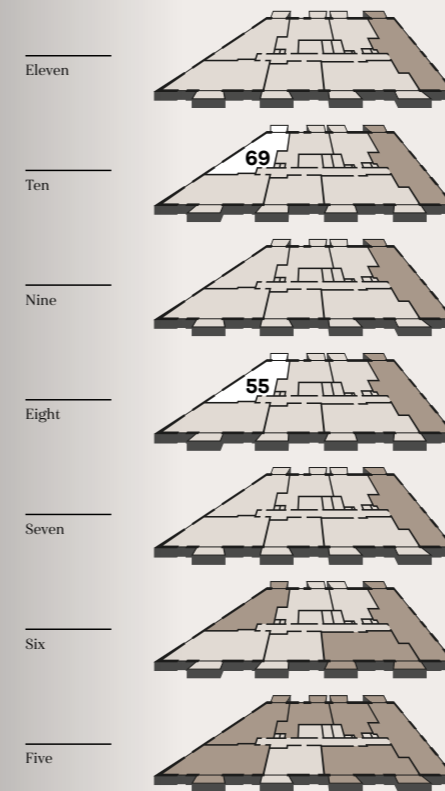
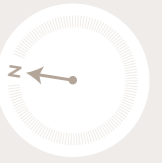
FLOORPLAN KEY

- UC Utility Cupboard (incl. heat interchange unit)
- S Store Cupboard
- WD Washer/Dryer
- ▶ Measurement point

NOTE: Blanked out window and acoustic louvre in bedrooms

55 & 69

Two Bedroom Apartment with Balcony



Dimensions	M	FT
Living Room	3.49 x 2.48	11'5" x 8'2"
Kitchen/Dining Room	4.24 x 3.49	13'11" x 11'5"
Bedroom 1	4.64 x 3.47	15'3" x 11'5"
Bedroom 2	4.49 x 3.10	14'9" x 10'2"
Balcony	4.55 x 1.57	14'11" x 5'2"
Total Area	64.91m²	699ft²

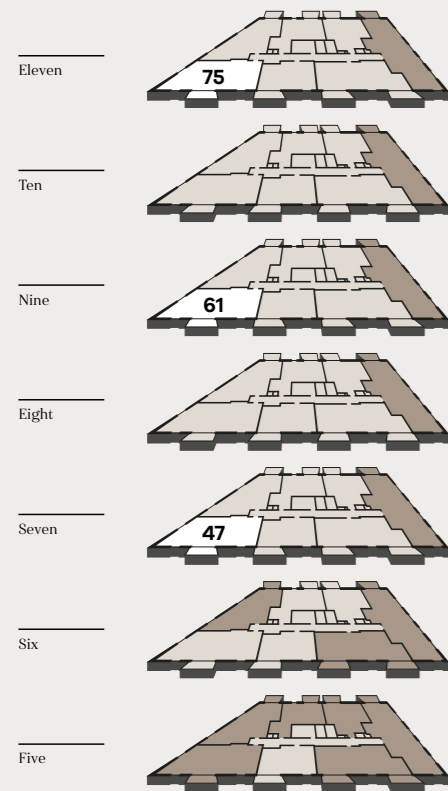
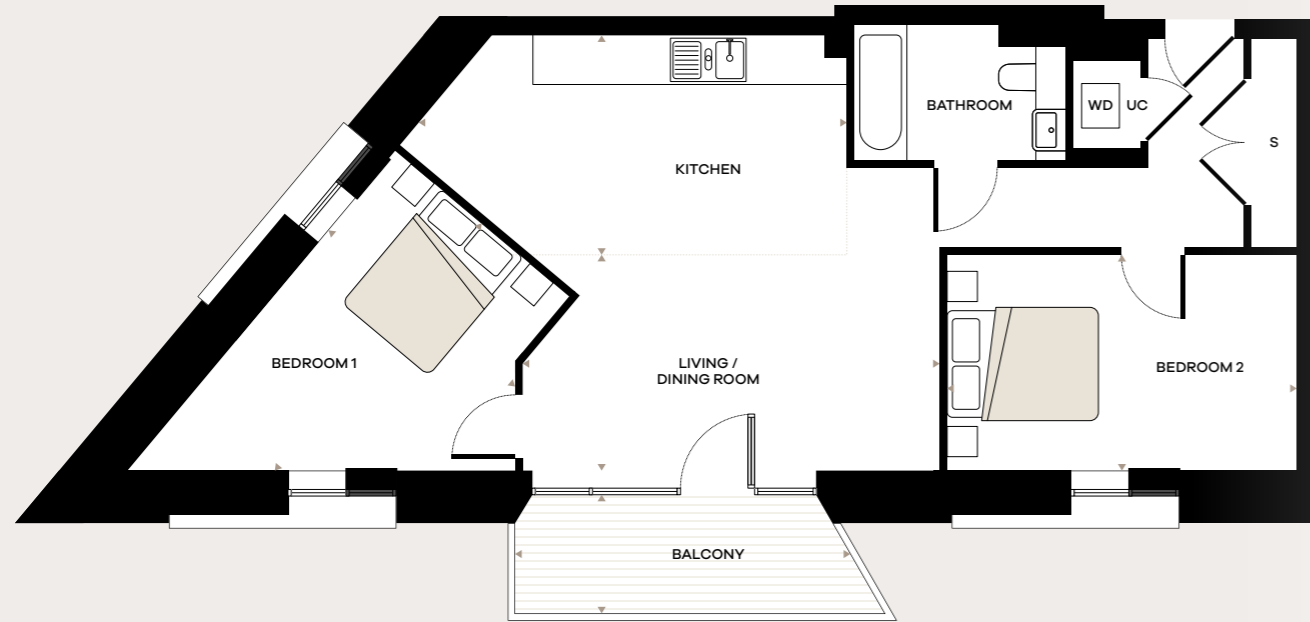
FLOORPLAN KEY

- UC Utility Cupboard (incl. heat interchange unit)
- S Store Cupboard
- WD Washer/Dryer
- ▶ Measurement point

NOTE: Blanked out window and acoustic louvre in bedrooms

47, 61 & 75

Two Bedroom Apartment with Balcony



Dimensions	M	FT
Living/Dining Room	5.51 x 2.85	18'1" x 9'4"
Kitchen	5.66 x 2.90	18'7" x 9'6"
Bedroom 1	4.26 x 3.22	14'0" x 10'7"
Bedroom 2	4.62 x 2.85	15'2" x 9'4"
Balcony	4.55 x 1.57	14'11" x 5'2"
Total Area	77.05m²	829ft²

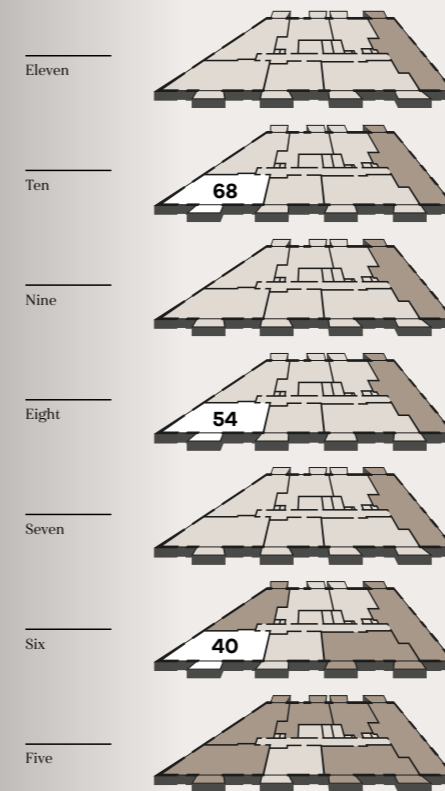
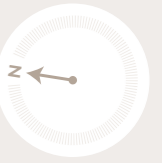
FLOORPLAN KEY

- UC Utility Cupboard (incl. heat interchange unit)
- S Store Cupboard
- WD Washer/Dryer
- Measurement point

NOTE: Blanked out window and acoustic louvres to Bedroom 1, blanked out windows to the west facing windows in Bedrooms 1 and 2

40, 54 & 68

Two Bedroom Apartment with Balcony



Dimensions	M	FT
Living/Dining Room	5.51 x 2.85	18'1" x 9'4"
Kitchen	5.66 x 2.90	18'7" x 9'6"
Bedroom 1	4.26 x 3.22	14'0" x 10'7"
Bedroom 2	4.62 x 2.85	15'2" x 9'4"
Balcony	4.55 x 1.57	14'11" x 5'2"
Total Area	77.05m²	829ft²

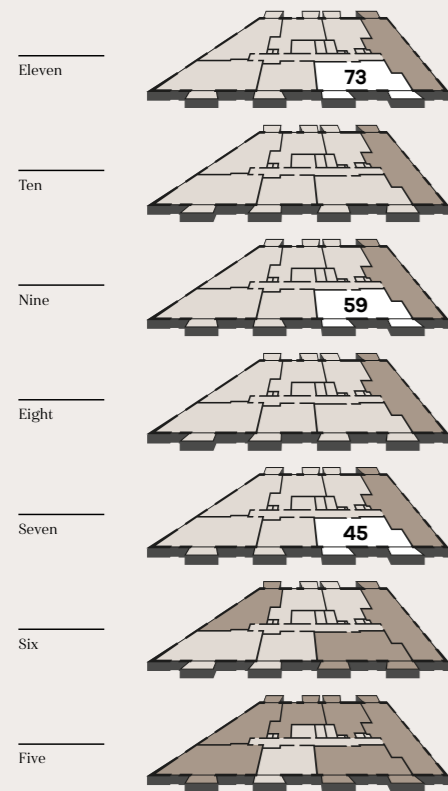
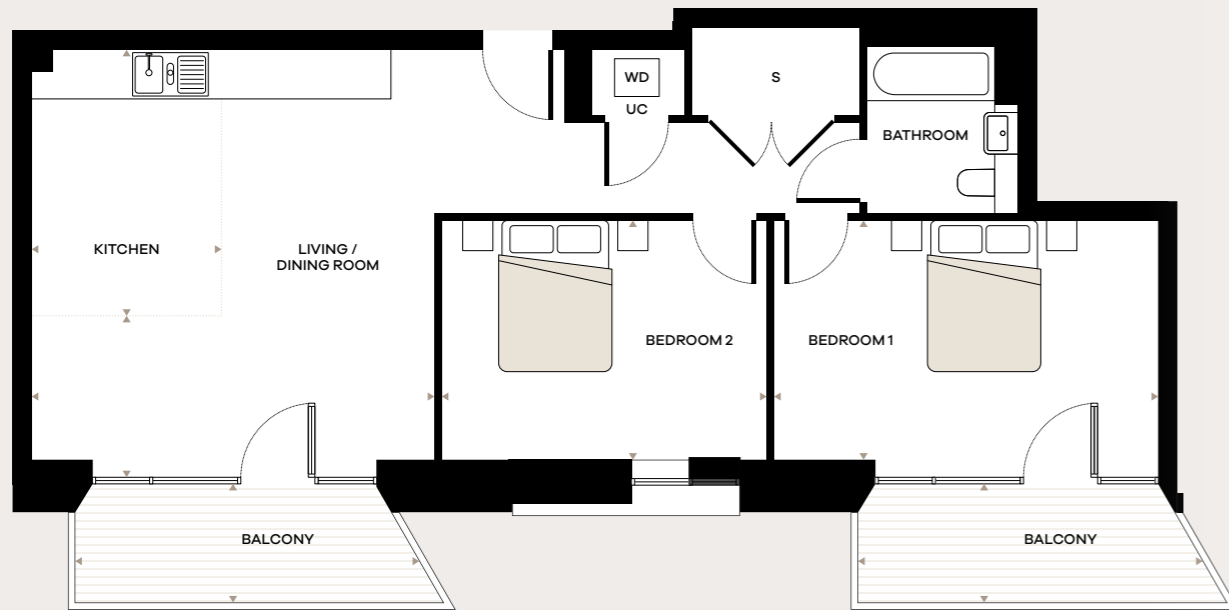
FLOORPLAN KEY

- UC Utility Cupboard (incl. heat interchange unit)
- S Store Cupboard
- WD Washer/Dryer
- Measurement point

NOTE: Blanked out window and acoustic louvres to Bedroom 1, blanked out windows to the west facing windows in Bedrooms 1 and 2

45, 59 & 73

Two Bedroom Apartment with Two Balconies



Dimensions	M	FT
Living/Dining Room	5.32 x 1.90	17'6" x 6'3"
Kitchen	3.52 x 2.51	11'7" x 8'3"
Bedroom 1	3.16 x 5.08	10'5" x 16'8"
Bedroom 2	4.29 x 3.16	14'1" x 10'5"
Balconies	4.55 x 1.57	14'11" x 5'2"
Total Area	79.39m²	855ft²

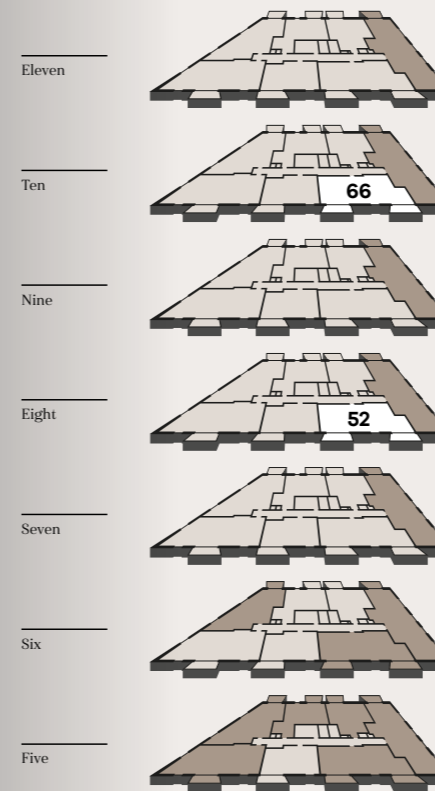
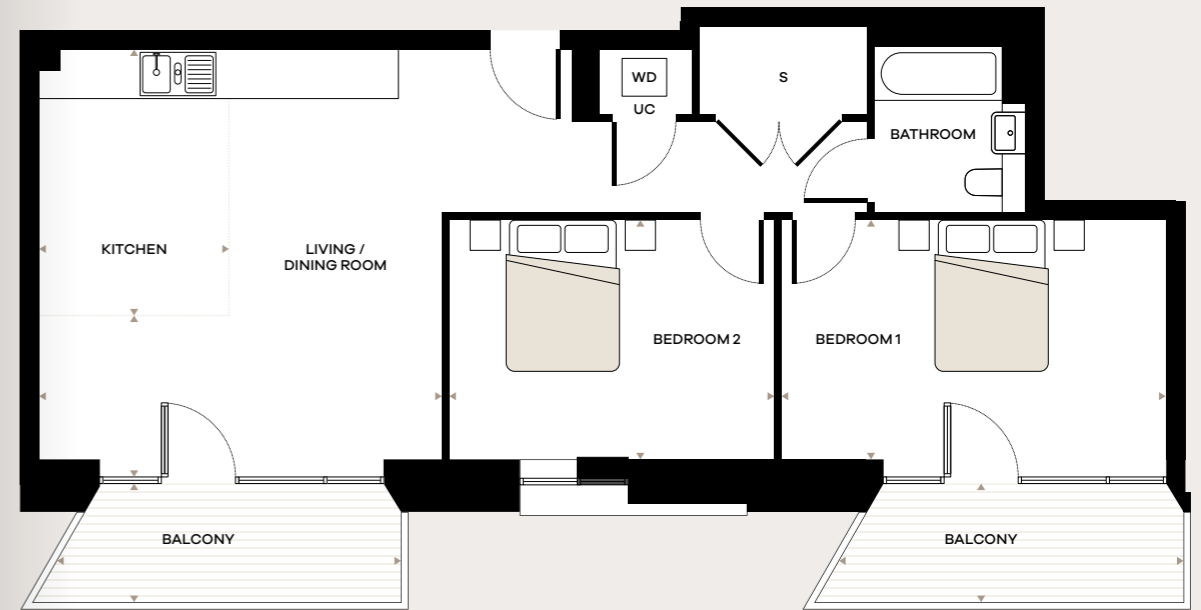
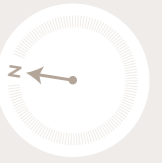
FLOORPLAN KEY

- UC Utility Cupboard (incl. heat interchange unit)
- S Store Cupboard
- WD Washer/Dryer
- ▶ Measurement point

NOTE: Blanked out window in bedroom

52 & 66

Two Bedroom Apartment with Two Balconies



Dimensions	M	FT
Living/Dining Room	5.32 x 1.90	17'6" x 6'3"
Kitchen	3.52 x 2.51	11'7" x 8'3"
Bedroom 1	3.16 x 5.08	10'5" x 16'8"
Bedroom 2	4.29 x 3.16	14'1" x 10'5"
Balconies	4.55 x 1.57	14'11" x 5'2"
Total Area	79.39m²	855ft²

FLOORPLAN KEY

- UC Utility Cupboard (incl. heat interchange unit)
- S Store Cupboard
- WD Washer/Dryer
- ▶ Measurement point

NOTE: Blanked out window in bedroom

SHARED OWNERSHIP WITH LATIMER



What is Shared Ownership?

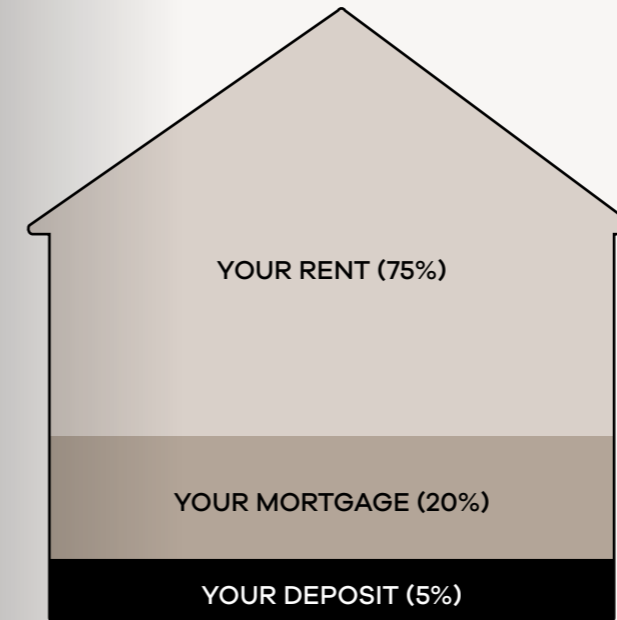
Shared Ownership is an excellent way for you to take your first steps onto the property ladder and become a homeowner. We've produced a full, step by step guide that you can find on the Latimer website, and given some key information here that you need to know.

Shared Ownership is also known as part buy, part rent and is designed to be a stepping stone to you owning your home outright. You buy a share of your home – as much as you can afford – starting from as little as 25% and rising up to 75% of the property's value. You then pay subsidised rent to us on the remaining share of your home.

Over time, you can buy more shares in your Shared Ownership property, meaning you can own your home outright. This process is known as 'staircasing'. It is a good idea to start thinking about staircasing even before you buy, so you have a plan for owning more of your property.

The deposit required for a Shared Ownership mortgage is lower than if you were purchasing a property outright. This is because it is calculated on the initial share you are purchasing, rather than the full value of the property.

EXAMPLE: Purchasing 25% of a property valued at £200,000



1 YOUR DEPOSIT

Your 25% share of this property would be worth £50,000, meaning you would need a 5% mortgage deposit of £2,500.

2 YOUR MORTGAGE

A mortgage lender could loan you the remaining £47,500 to make up the full value of your 25% share.

3 YOUR RENT

You will then pay subsidised rent to Latimer on the remaining 75% of the property you don't own.

Am I eligible for Shared Ownership?

To be eligible for Shared Ownership you will need to meet certain requirements set by Homes England and the Greater London Authority (GLA). You could be eligible for Shared Ownership if:

- You are at least 18 years old
- You cannot afford to buy a home that suits your household's needs on the open market
- You have savings to cover a mortgage deposit and can obtain a mortgage
- Your household earns £80,000 or less (£90,000 or less inside London)
- You are a first-time buyer
- Windsor Apartments applicants are required to register with the Wandsworth Home Ownership team. Please visit: www.wandsworth.gov.uk/sharedownership

If you already own a home and need to move but cannot afford to – or you have equity from a recent sale – please contact us, as there are some circumstances under which you may still be eligible.

In some cases, due to criteria set by local authorities, you may be asked to show a connection to the local area where you're looking to buy. For instance, you might currently live and/or work there.

Maximum incomes and further eligibility requirements may vary for each scheme. Speak to a member of our sales team if you have any doubts.

Before you purchase a Shared Ownership home, we will put you in touch with an independent mortgage advisor who will assess whether the purchase is affordable for you and take you through all your options.

This Photograph

The annual spectacle of the unmissable Battersea Park fireworks display.



About Latimer Homes

Latimer Delivers More

Latimer by Clarion Housing Group is the development arm of Clarion Housing Association Limited and Latimer Developments Limited.

Clarion Housing Association Limited is a charitable Community Benefit Society (FCA No. 7686). Registered with the Regulator of Social Housing (No. 4865). VAT No. 675 6463 94. Registered office: Level 6, 6 More London Place, Tooley Street, London, SE1 2DA. Clarion Housing is part of Clarion Housing Group.

WORKING IN PARTNERSHIP



LATIMER
by Clarion Housing Group



Latimer has taken all reasonable care in the preparation of the information given in this brochure. However, this information is subject to change and has been prepared solely for the purpose of providing general guidance. Latimer does not therefore warrant the accuracy or completeness of this information. Particulars are given for illustrative purposes only. Latimer undertakes continuous product development and any information given relating to our products may vary from time to time. As a result, information on such products is given for general guidance only and does not constitute any form of contract or warranty on our part. The information and particulars set out within this brochure do not constitute, nor constitute part of, a formal offer, invitation or contract (whether from Latimer or any of its related subsidiaries or affiliates) to acquire the relevant property. For the reasons mentioned above, no information contained in this brochure is to be relied upon. In particular, all plans, perspectives, descriptions, dimensions and measurements are approximate and provided for guidance only. Such information is given without responsibility on the part of Latimer. Latimer supports the development of mixed tenure developments, and is proud to provide homes for outright sale and shared ownership. We may change the tenure of some homes subject to demand. Latimer by Clarion Housing Group is the development arm of Clarion Housing Association Limited and Latimer Developments Limited. Clarion Housing Association Limited is registered with Regulator of Social Housing (4865); and is a charitable Community Benefit Society under the Co-operative and Community Benefit Societies Act 2014 (766) VAT no 675646394. Clarion Housing Association Limited's registered office is at Level 6, 6 More London Place, Tooley Street, London SE1 2DA.



LATIMER
by Clarion Housing Group

Call: 0300 100 0309

www.latimerhomes.com/windsor-apartments