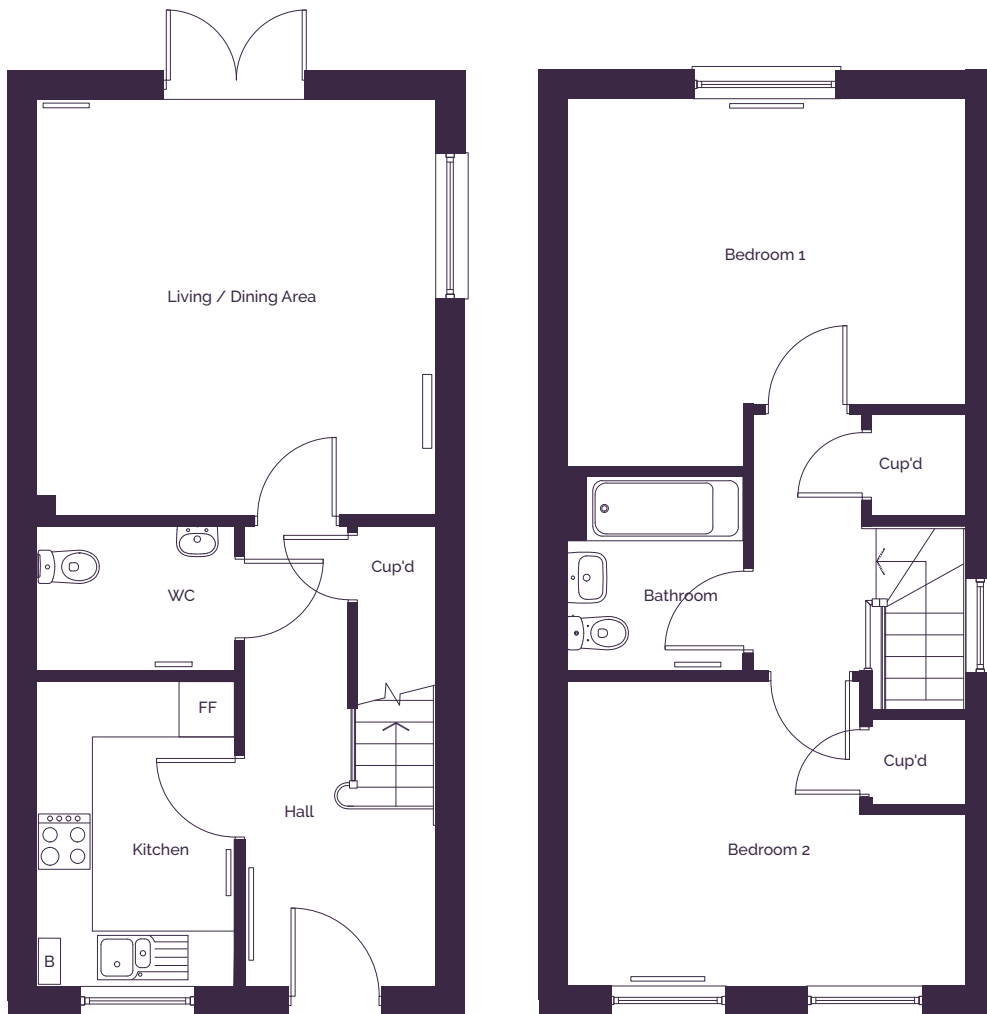




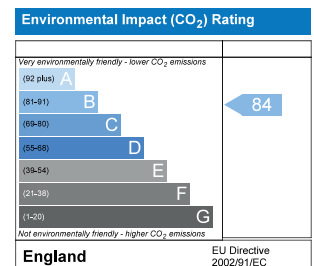
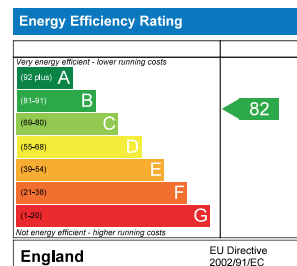
MOAT AT
CHURCH VIEW
TENTERDEN

Two bedroom house

01 MERCER DRIVE, TENTERDEN, KENT



Total Internal Area	85.59 sq m
Kitchen	2.1m x 3.3m
Living / Dining area	4.3m x 4.5m
Bedroom 1	4.3m x 3.9m
Bedroom 2	4.3m x 3.3m



Cup'd = Cupboard, B = Boiler, WM = Washing Machine, FF = Fridge Freezer,

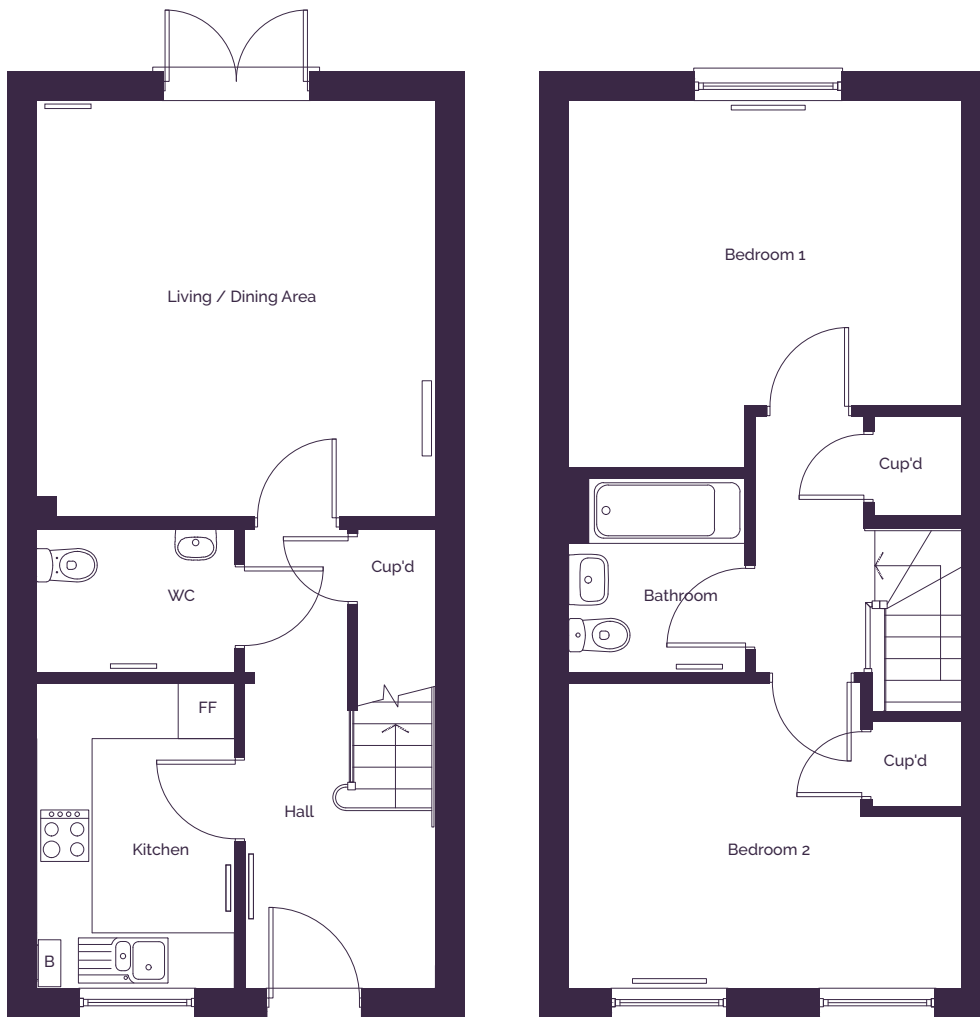
Floor plans shown are indicative only. All room sizes are approximate with maximum dimensions of finished items of furniture. Room layouts may be subject to minor modifications. Furniture, kitchen and bathroom layouts shown are indicative only*. Measurement at widest point.



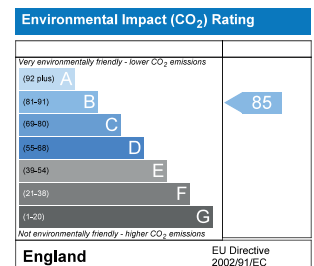
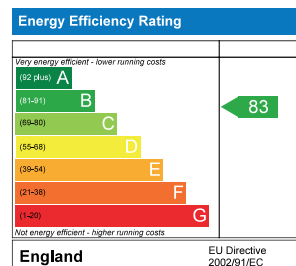
MOAT AT
CHURCH VIEW
TENTERDEN

Two bedroom house

15 MERCER DRIVE, TENTERDEN, KENT



Total Internal Area	83.05 sq m
Kitchen	2.1m x 3.3m
Living / Dining area	4.3m x 4.5m
Bedroom 1	4.3m x 3.9m
Bedroom 2	4.3m x 3.3m



Cup'd = Cupboard, B = Boiler, WM = Washing Machine, FF = Fridge Freezer,

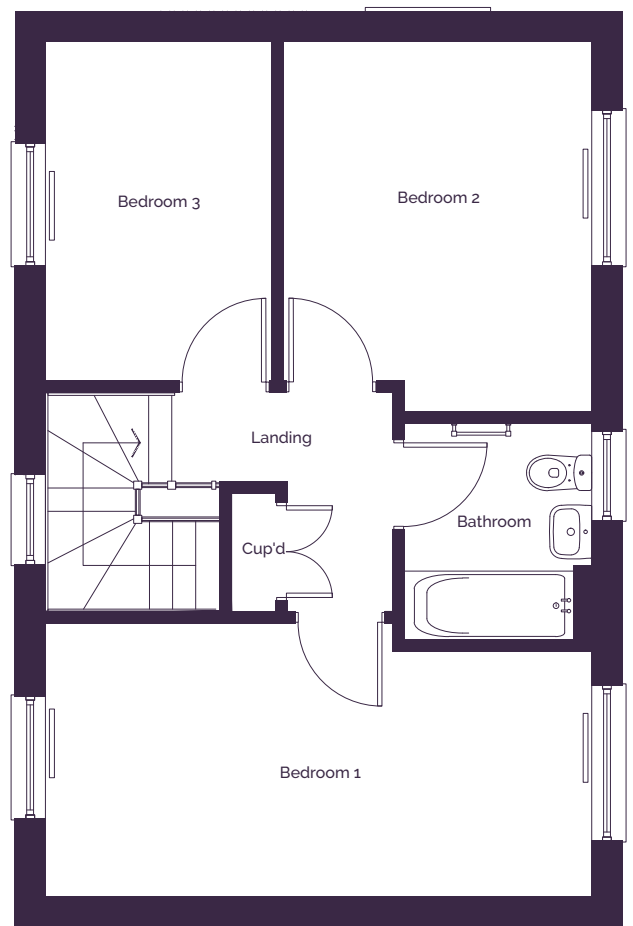
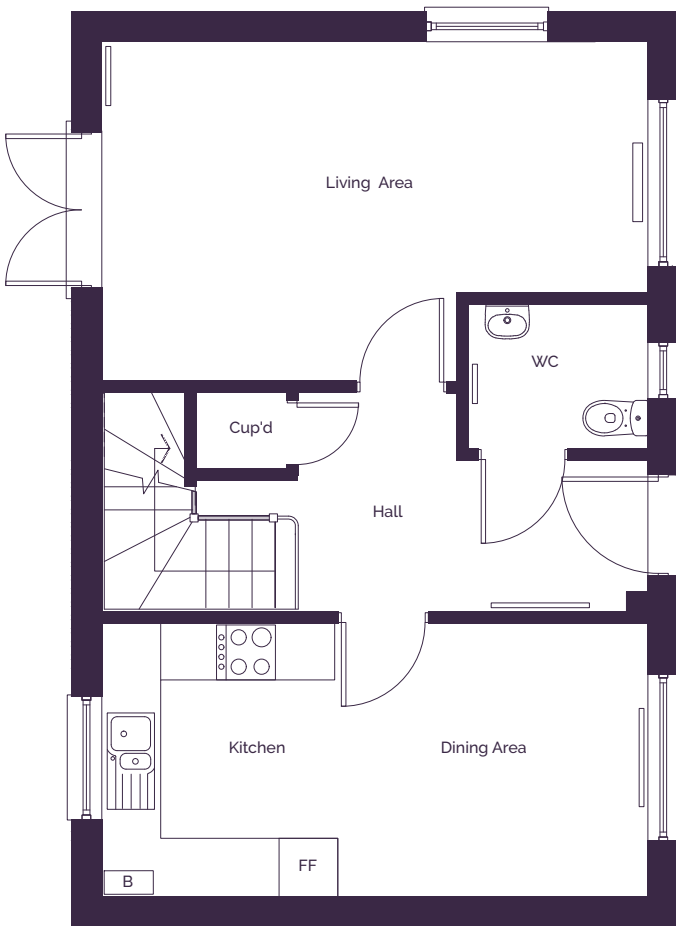
Floor plans shown are indicative only. All room sizes are approximate with maximum dimensions of finished items of furniture. Room layouts may be subject to minor modifications. Furniture, kitchen and bathroom layouts shown are indicative only*. Measurement at widest point.



MOAT AT
CHURCH VIEW
TENTERDEN

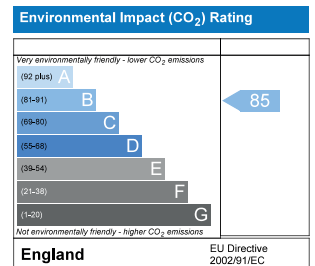
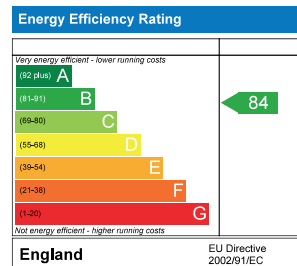
Three bedroom house

16 MERCER DRIVE, TENTERDEN, KENT



Total Internal Area 96 sq m

Kitchen / Dining area	2.8m x 5.5m
Living area	3.4m x 5.5m
Bedroom 1	2.8m x 5.5m
Bedroom 2	3.7m x 3.1m
Bedroom 3	3.4m x 2.3m



Cup'd = Cupboard, B = Boiler, WM = Washing Machine, FF = Fridge Freezer,

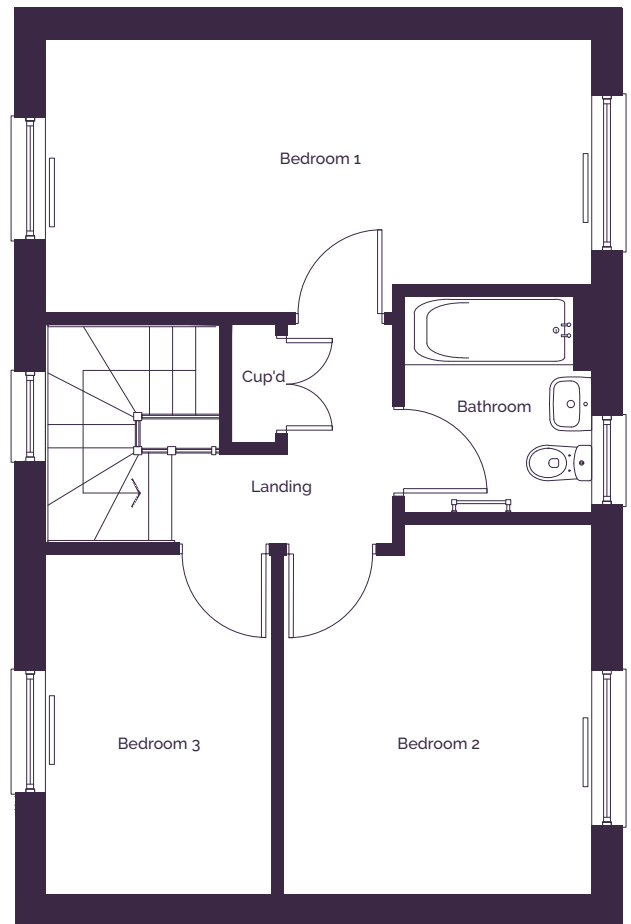
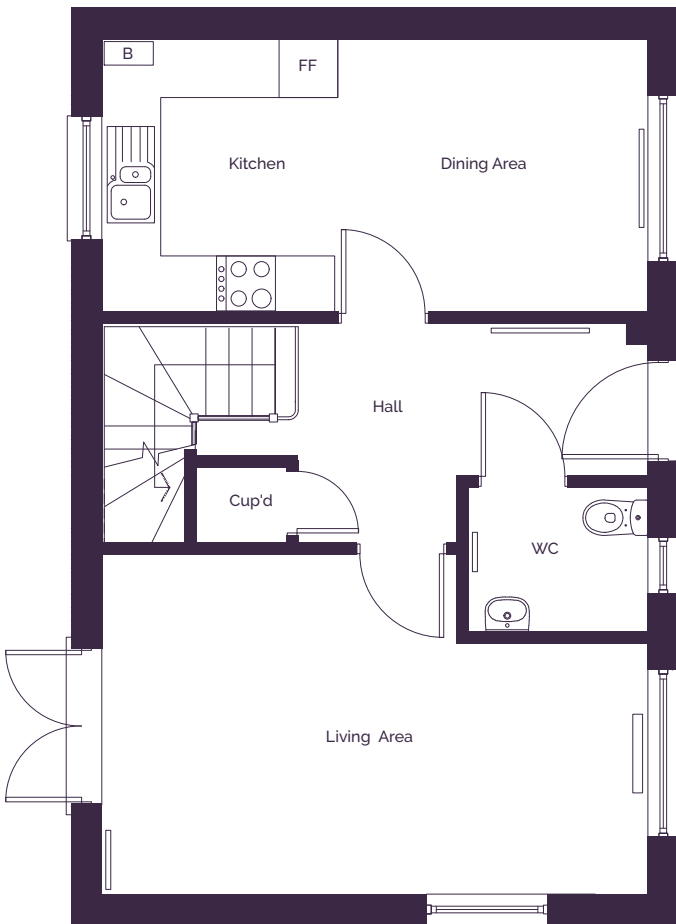
Floor plans shown are indicative only. All room sizes are approximate with maximum dimensions of finished items of furniture. Room layouts may be subject to minor modifications. Furniture, kitchen and bathroom layouts shown are indicative only*. Measurement at widest point.



MOAT AT
CHURCH VIEW
TENTERDEN

Three bedroom house

18 MERCER DRIVE, TENTERDEN, KENT



Total Internal Area 96 sq m

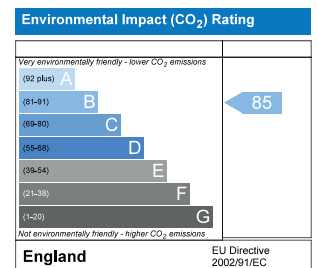
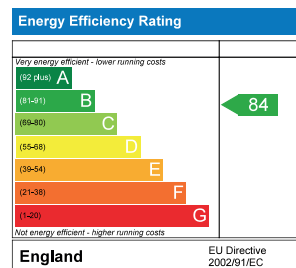
Kitchen / Dining area 2.8m x 5.5m

Living area 3.4m x 5.5m

Bedroom 1 2.8m x 5.5m

Bedroom 2 3.7m x 3.1m

Bedroom 3 3.4m x 2.3m



Cup'd = Cupboard, B = Boiler, WM = Washing Machine, FF = Fridge Freezer,

Floor plans shown are indicative only. All room sizes are approximate with maximum dimensions of finished items of furniture. Room layouts may be subject to minor modifications. Furniture, kitchen and bathroom layouts shown are indicative only*. Measurement at widest point.