

# VODION

HACKNEY | E3

**1, 2 & 3 bedroom apartments**

Available through Shared Ownership

Southern  
Home  
Ownership





WELCOME TO  
**INSPIRED LIVING  
TRANSFORMED**  
HACKNEY WICK

HACKNEY | E3

# MOVING WITH THE TIMES

Vodion is an exciting new development of 1, 2 & 3 bedroom apartments on Fish Island in Hackney Wick. Climb the property ladder much sooner through Shared Ownership, and embrace contemporary living in the heart of London's East End.

Vodion offers residents easy access into central London for commuting and leisure, and is just a short walk away from the River Lea and the open green spaces of the Queen Elizabeth Olympic Park and Victoria Park. Find your dream home in one of London's most sought-after rejuvenated areas.



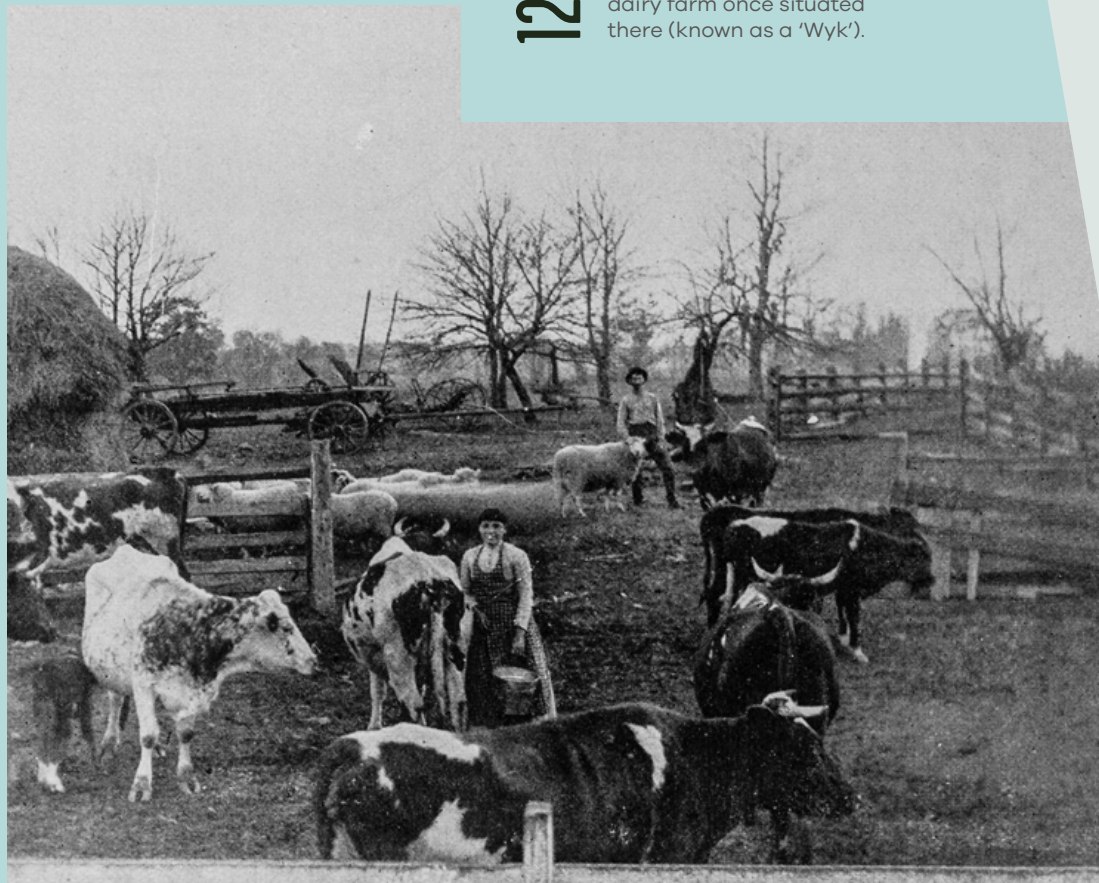


# HISTORY

## OF HACKNEY WICK.

1200s

Back in the 13th century, Hackney Wick received its name from the outlying dairy farm once situated there (known as a 'Wyk').



1700s



By the 18th century, Hackney Wick played a prominent role in the industrial revolution thanks to the production of silk, confectionery, toys and the creation of a refining business. Although industrial business boomed in the late 1800s it also contributed to general poverty and social decline in the area, with inadequate housing.

1900s



From the 1930s, local authorities set plans in motion to improve living conditions by opening public baths, a library and creating affordable housing. Many of the structures created in the 1960s have since been taken down and replaced with more attractive housing. Some of the factory buildings from Hackney Wick's industrial era still exist and are used as studios.

# PRESENT DAY

## IN HACKNEY WICK.

Hackney Wick is a diverse part of East London that is home to museums, boutique shops, artists' studios, quirky coffee shops and cafes, craft breweries, post offices and local supermarkets.

Many locals make use of the green open spaces and walking trails around Queen Elizabeth Olympic Park and Victoria Park. The River Lea canal offers plenty of vibrant bars and eateries serving up a range of cuisines. West Ham United's London Stadium and Lee Valley VeloPark continue to attract sports fans, while Victoria Park Cricket Field has a thriving playing community.



# CULTURE TO COMMUNITY

Located between Hackney and Stratford, Hackney Wick offers great accessibility into central London for commuting, shopping, leisure and nightlife.



## VODION



# GREEN GRASS

## OPEN SPACES.

Vodion in Fish Island is close to the Queen Elizabeth Olympic and Victoria parks, with vast green spaces just a short stroll away. For the kids, there's Pleasure Gardens play area, Victoria Park Skatepark and the Kids' Main Playground. Adults will love a stroll around the nearby Great British Garden, or hiring a boat for a cruise around Victoria Park's West Boating Lake.



VICTORIA PARK  
0.5  
MILES

OLYMPIC PARK  
0.6  
MILES

BOATING LAKE  
1.2  
MILES







04



03



02



05

01

**CRATE BREWERY & PIZZERIA**

A trendy bar and brewery situated in an old factory, serving artisan stone-baked pizzas next to the River Lea.

cratebrewery.com

CUISINE: ITALIAN 0.6 MILES

02

**BARGE EAST RESTAURANT**

Floating Dutch barge restaurant serving local British fare with global and seasonal influence. Riverside gardens and outdoor dining are also available.

bargeeast.com

CUISINE: BRITISH 0.6 MILES

03

**LONDON AQUATICS CENTRE**

The most technologically advanced swimming facilities in the world. Book swimming and diving lessons, or join the club gym.

londonaquaticscentre.org

SWIMMING, DIVING AND GYM CENTRE 2 MILES

04

**WESTFIELD STRATFORD CITY**

Shop big-name and household brands at one of the UK's largest shopping centres.

uk.westfield.com/stratfordcity

SHOPPING CENTRE 2 MILES

05

**EAST BANK**

A powerhouse for innovation, creativity and learning on Queen Elizabeth Olympic Park. A unique collaboration between world-leading universities, arts and culture institution.

future.london/partner/east-bank-partnership

COMMUNITY HUB 0.6 MILES

RIGHT ON YOUR

DOORSTEP

NEARBY SCHOOLS

Hackney Wick and the surrounding area is home to several learning institutions.



**OLD FORD PRIMARY ACADEMY**

A school that enables all pupils to achieve through exceptional quality of teaching and support.

Ofsted: Outstanding

DISTANCE: 0.7 MILES AGES: 3-11

**BOBBY MOORE ACADEMY PRIMARY**

A school that values dedication and hard work and teaches pupils the values of integrity, ambition and leadership.

Ofsted: An outstanding school that has become an academy

DISTANCE: 0.3 MILES AGES: 4-19

**MOSSBOURNE RIVERSIDE PRIMARY ACADEMY**

A school that prides itself on its calm working atmosphere, creating well-rounded pupils who excel academically.

Ofsted: Outstanding

DISTANCE: 0.8 MILES AGES: 3-11

**GAINSBOROUGH PRIMARY SCHOOL**

A caring and supportive institution that makes its pupils feel valued as part of a learning community.

Ofsted: Good

DISTANCE: 0.7 MILES AGES: 2-11



V



V

OXFORD CIRCUS  
25 MIN  
FROM STRATFORD STATION

# CHOICE

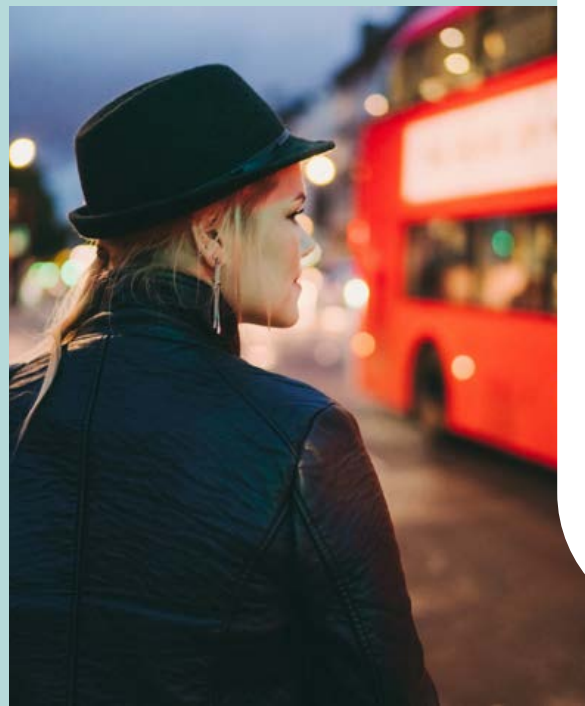
V

TO CONNECT  
TO THE CITY

DINNER,  
COCKTAILS  
AND MUSIC



CONVENIENT FOR  
COMMUTERS



LONDON BRIDGE  
25 MIN  
FROM STRATFORD STATION

V





DESIGNED WITH

# SPECTACULAR SPECIFICATION

JUST FOR YOU

HACKNEY | E3



## KITCHEN

- Contemporary fitted kitchens designed and manufactured by Commodore
- Light grey handleless cupboards
- Soft close drawer with cutlery insert included
- Commodore mink glass splashback
- 20mm Silestone Blanco Note/ White North 14 worktop
- 1½ bowl inset stainless steel sink with drainer and mixer tap
- Touch control Bosch single oven & hob (1 & 2 bedroom apartments)
- Touch control Bosch double oven & hob (3 bedroom apartments)
- Commodore extractor
- Zanussi integrated fridge/freezer
- Zanussi integrated washer/dryer
- Zanussi integrated dishwasher
- Chrome sockets and light switches

## BATHROOM

- Contemporary Ideal Standard bathroom white 3 piece sanitaryware
- Chrome Ideal Standard single lever basin tap
- Chrome Grohe Eurostyle Cosmopolitan bath spout
- Soft close seat
- Shower over bath
- Glass bath screen
- Diesse Bari wall and floor tiles 307mm x 615mm in silver
- 20mm Silestone vanity worktop
- Large mirror above sink area
- Chrome heated towel rail

## EN SUITE

- Contemporary Ideal Standard en suite white 3 piece sanitaryware
- Soft close seat
- Chrome Ideal Standard single lever basin tap
- Grohe Rain shower system
- 20mm Silestone vanity worktop
- Large mirror above sink area
- Chrome heated towel rail
- Brescia vinyl flooring

## LIGHTING & ELECTRICAL

- LED downlighters to hallway, living room, kitchen and bathrooms
- Pendant lighting to bedrooms
- Entrotec video/audio monitor – entry-phone
- TV/DAB Radio, BT socket and Sky Q to living area
- White shaver socket
- White Tubular Electric heater to airing cupboard

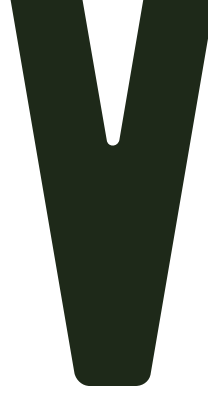
## BEDROOMS

- Elford twist stone carpet to bedrooms
- Mirrored sliding doors, chrome railing fitted wardrobes to bedroom 1
- TV and BT socket

## INTERNAL FINISHES

- Dulux Matt Emulsion white paint to ceilings and walls
- Soft oak light brown Quickstep impressive flooring to kitchen/living/dining areas and hallway





- BLOCK A**  
COMMERCIAL
- BLOCK B**  
1, 2 & 3 BEDROOM APARTMENTS  
PLOTS 3-48
- BLOCK C**  
1, 2 & 3 BEDROOM APARTMENTS  
PLOTS 51-80
- BLOCK D**  
1 & 2 BEDROOM APARTMENTS  
PLOTS 81-110
- BLOCK E**  
1, 2 & 3 BEDROOM APARTMENTS  
PLOTS 111-144
- SEATING
- AMENITY  
& BIODIVERSE SPACE
- BS** GROUND LEVEL  
BIN STORE
- CS** GROUND LEVEL  
CYCLE STORE
- DISABLED PARKING**



The development layout does not show details of gradients of land, boundary treatments, local authority street lighting or landscaping. It is our intention to build in accordance with this layout. However, there may be occasions when the house designs, boundaries, landscaping and positions of roads and footpaths change as the development proceeds. Please speak to a member of our Sales Team for more details.



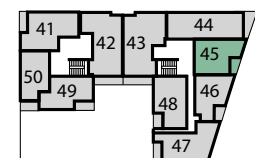
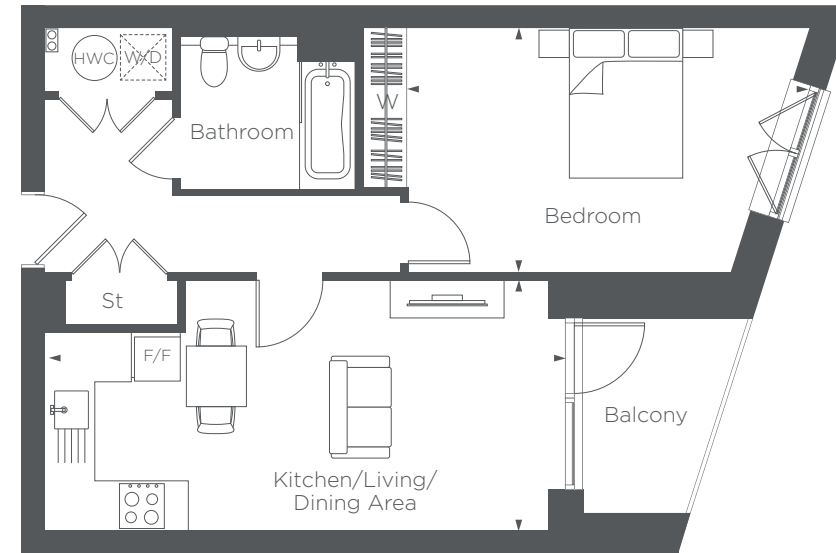
01

# BEDROOM APARTMENTS

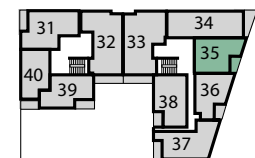
DESIGNED TO  
GIVE YOU THE  
FREEDOM TO FLOW  
THROUGHOUT



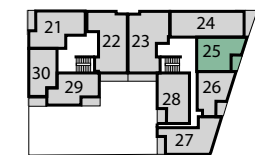
HACKNEY | E3



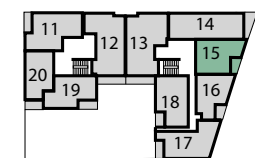
Fourth floor



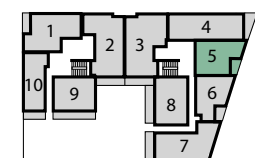
Third floor



Second floor



First floor



Ground floor

## BLOCK B

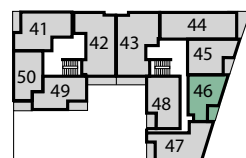
PLOTS 5, 15,  
25, 35 & 45

<b>Kitchen/Living/Dining Area</b>	6.89M x 3.33M	22'6" x 10'9"
<b>Bedroom</b>	5.31M x 3.23M	17'4" x 10'5"
<b>Balcony</b>	3.33M x 2.13M	10'9" x 6'9"

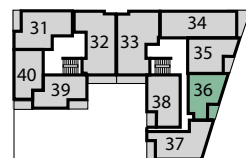
F/F – Fridge/Freezer HWC – Hot Water Cylinder St – Store W/D – Washer Dryer W – Wardrobe  
Floorplans shown are indicative only. The kitchen layout and furniture positions are for indicative purposes only. All dimensions indicated are approximate and should not be relied upon for carpet sizes or items of furniture. The developer reserves the right to make changes to these plans prior to exchange of contracts. For exact plot specification, details of external and internal finishes, dimensions and floorplan differences, please speak to a member of our Sales Team for more details.



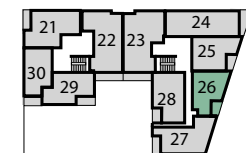




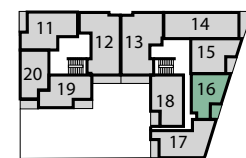
Fourth floor



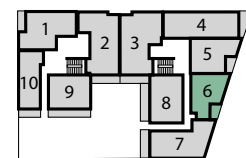
Third floor



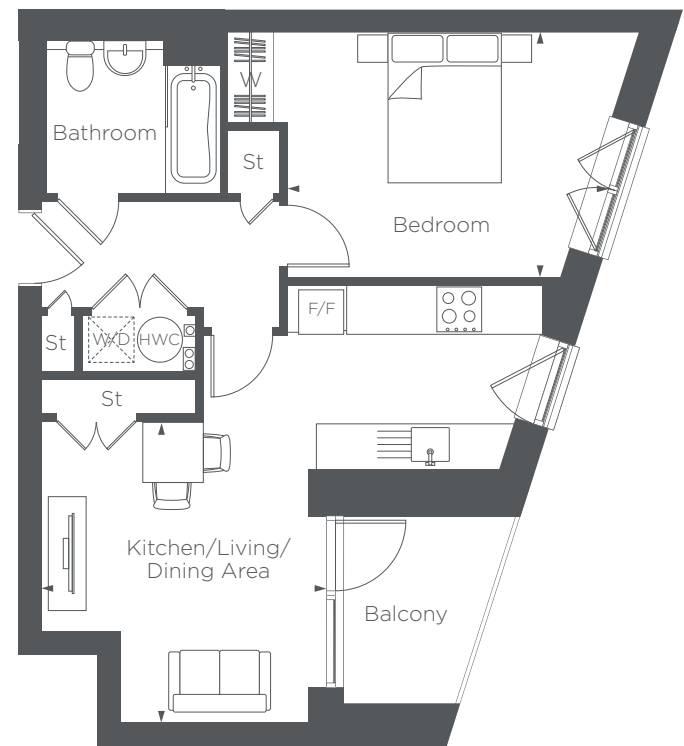
Second floor



First floor



Ground floor



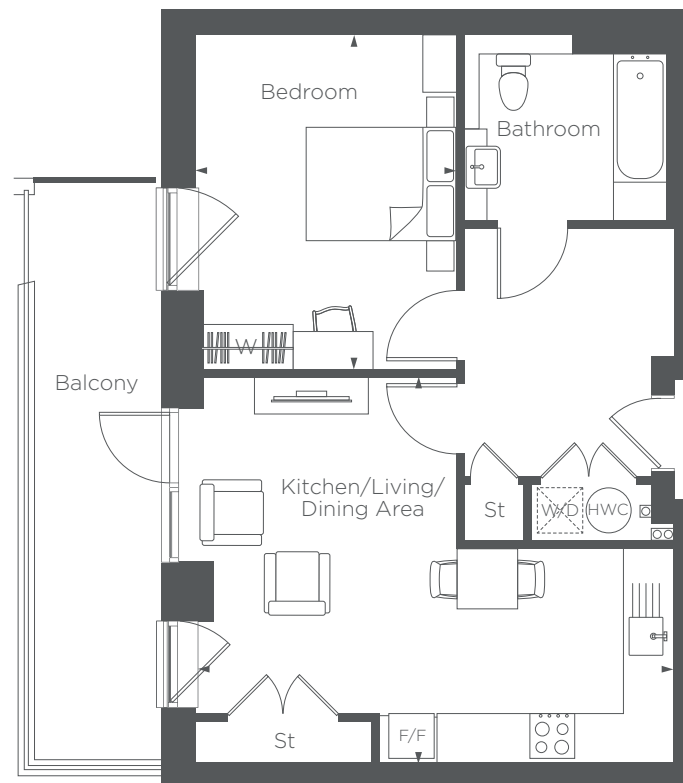
**Kitchen/Living/Dining Area**  
3.98M x 3.76M      13'0" x 12'3"

**Bedroom**  
4.25m x 3.24M      13'9" x 10'6"

**Balcony**  
2.78M x 2.07M      9'1" x 6'7"

## BLOCK B

PLOTS 6, 16,  
26, 36 & 46



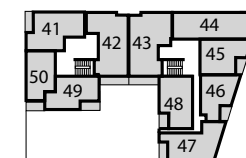
**Kitchen/Living/Dining Area**  
6.33M x 3.96M      20'7" x 12'9"

**Bedroom**  
4.42M x 3.45M      14'5" x 11'3"

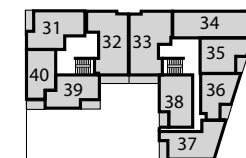
**Balcony**  
7.70M x 1.87M      25'2" x 6'1"

## BLOCK B

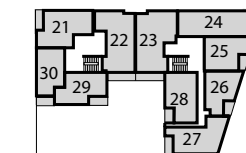
PLOT 8



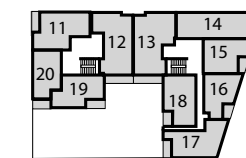
Fourth floor



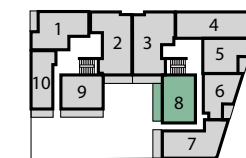
Third floor



Second floor

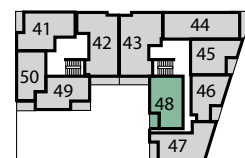
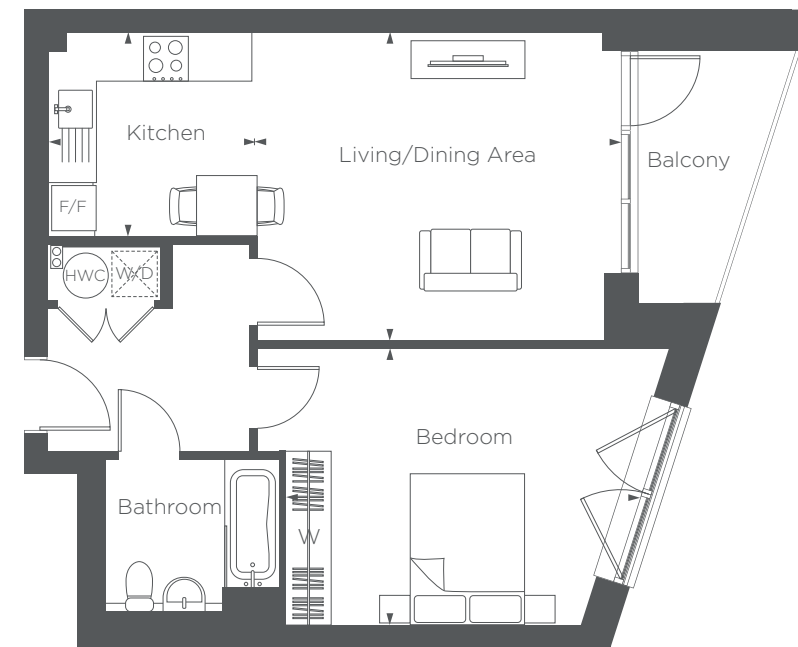
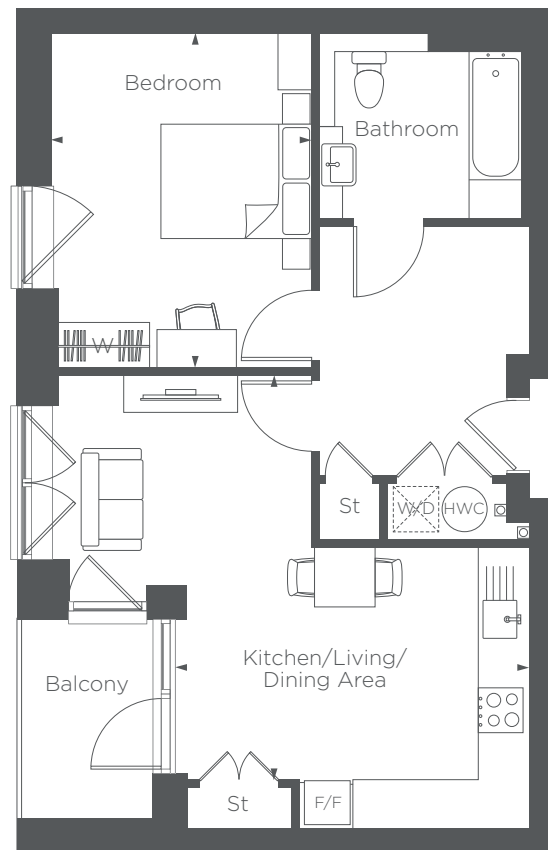


First floor

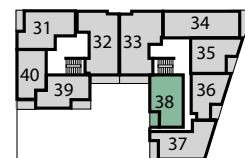


Ground floor

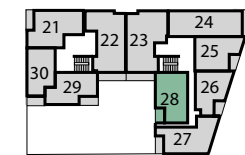




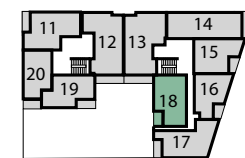
Fourth floor



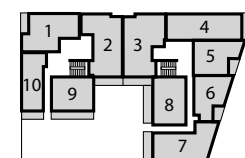
Third floor



Second floor



First floor



Ground floor

**Kitchen/Living/Dining Area**  
7.00m x 3.72m      22'9" x 12'2"

**Bedroom**  
4.42M x 3.45M      14'5" x 11'3"

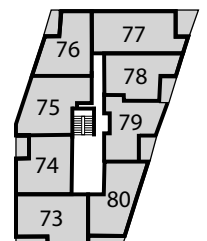
**Balcony**  
2.62M x 1.84M      8'5" x 6'0"

## BLOCK B

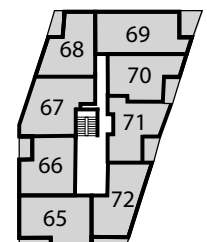
PLOTS 18, 28,  
38 & 48

## BLOCK C

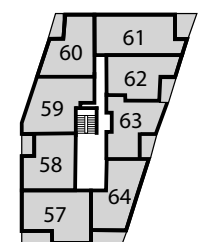
PLOT 55



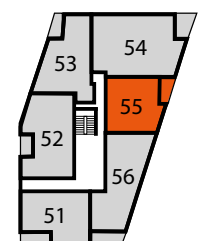
Fourth floor



Third floor



Second floor



First floor

**Kitchen**  
2.75m x 2.70m      9'0" x 8'10"

**Living/Dining Area**  
4.85m x 4.08m      15'11" x 13'5"

**Bedroom**  
4.68M x 3.66M      15'3" x 12'0"

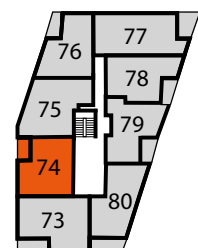
**Balcony**  
3.33M x 1.80M      10'9" x 5'9"

**F/F** – Fridge/Freezer    **HWC** – Hot Water Cylinder    **St** – Store    **W/D** – Washer Dryer    **W** – Wardrobe

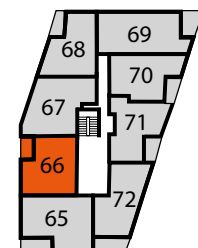
Floorplans shown are indicative only. The kitchen layout and furniture positions are for indicative purposes only. All dimensions indicated are approximate and should not be relied upon for carpet sizes or items of furniture. The developer reserves the right to make changes to these plans prior to exchange of contracts. For exact plot specification, details of external and internal finishes, dimensions and floorplan differences, please speak to a member of our Sales Team for more details.

**F/F** – Fridge/Freezer    **HWC** – Hot Water Cylinder    **St** – Store    **W/D** – Washer Dryer    **W** – Wardrobe  
Floorplans shown are indicative only. The kitchen layout and furniture positions are for indicative purposes only. All dimensions indicated are approximate and should not be relied upon for carpet sizes or items of furniture. The developer reserves the right to make changes to these plans prior to exchange of contracts. For exact plot specification, details of external and internal finishes, dimensions and floorplan differences, please speak to a member of our Sales Team for more details.

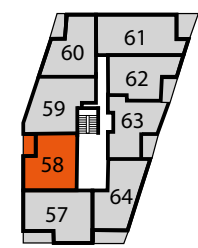




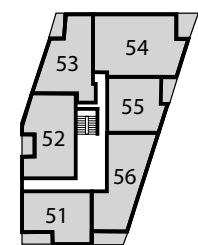
Fourth floor



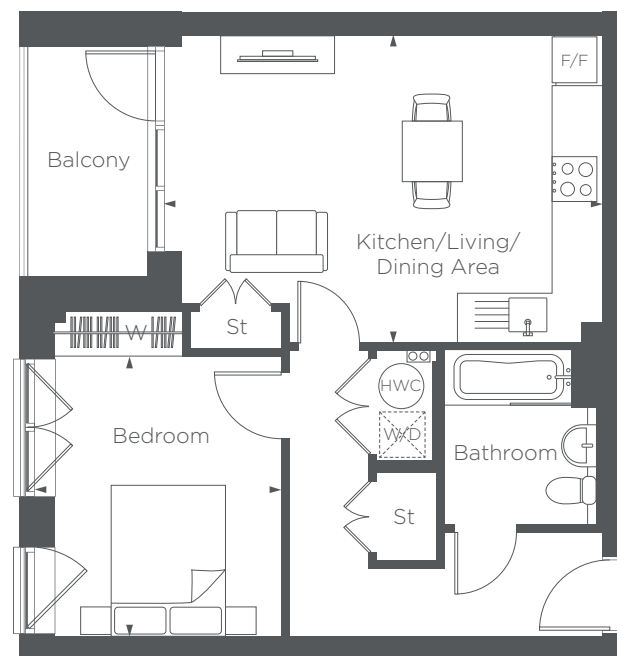
Third floor



Second floor



First floor



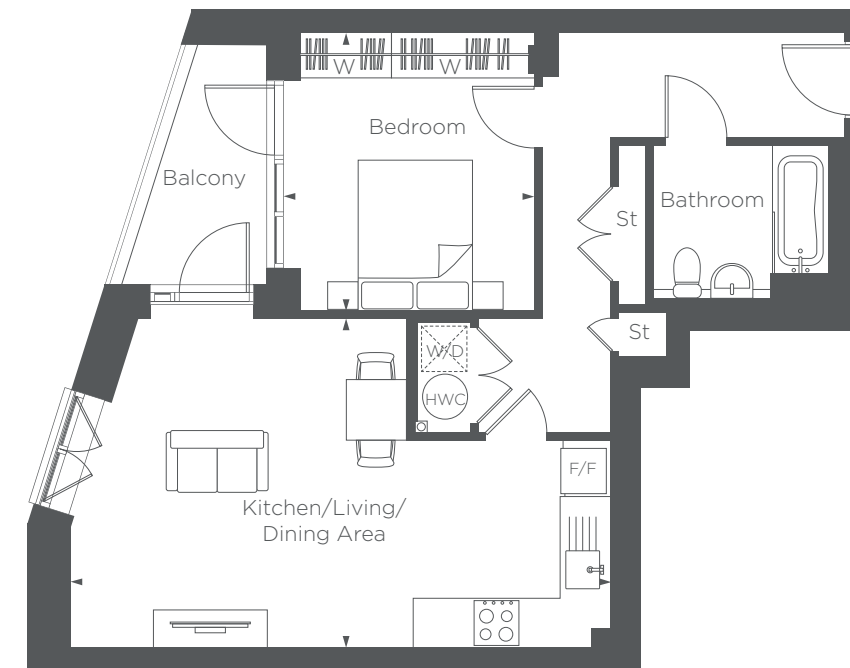
**Kitchen/Living/Dining Area**  
5.79M x 4.07m      18'9" x 13'3"

**Bedroom**  
3.70M x 3.01M      12'1" x 9'8"

**Balcony**  
3.04M x 1.74M      9'9" x 5'7"

# BLOCK C

## PLOTS 58, 66 & 74



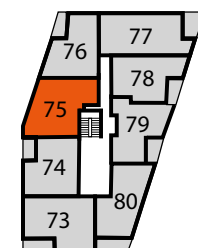
**Kitchen/Living/Dining Area**  
6.17M x 4.34M      20'2" x 14'2"

**Bedroom**  
3.68M x 3.32M      12'0" x 10'8"

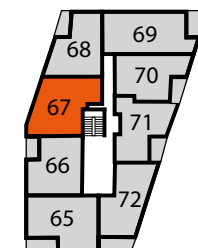
**Balcony**  
3.18M x 1.95M      10'4" x 6'3"

# BLOCK C

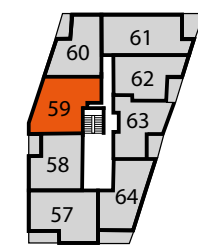
## PLOTS 59, 67 & 75



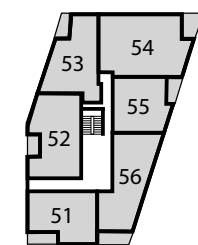
Fourth floor



Third floor



Second floor



First floor

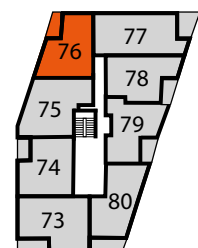


F/F – Fridge/Freezer    HWC – Hot Water Cylinder    St – Store    W/D – Washer Dryer    W – Wardrobe  
Floorplans shown are indicative only. The kitchen layout and furniture positions are for indicative purposes only. All dimensions indicated are approximate and should not be relied upon for carpet sizes or items of furniture. The developer reserves the right to make changes to these plans prior to exchange of contracts. For exact plot specification, details of external and internal finishes, dimensions and floorplan differences, please speak to a member of our Sales Team for more details.

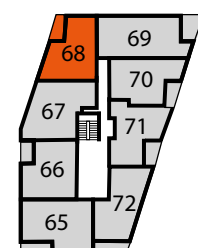


F/F – Fridge/Freezer    HWC – Hot Water Cylinder    St – Store    W/D – Washer Dryer    W – Wardrobe  
Floorplans shown are indicative only. The kitchen layout and furniture positions are for indicative purposes only. All dimensions indicated are approximate and should not be relied upon for carpet sizes or items of furniture. The developer reserves the right to make changes to these plans prior to exchange of contracts. For exact plot specification, details of external and internal finishes, dimensions and floorplan differences, please speak to a member of our Sales Team for more details.

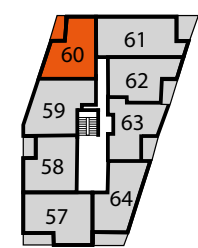




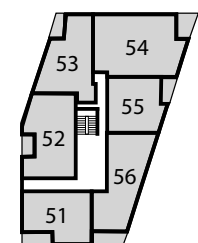
Fourth floor



Third floor



Second floor



First floor



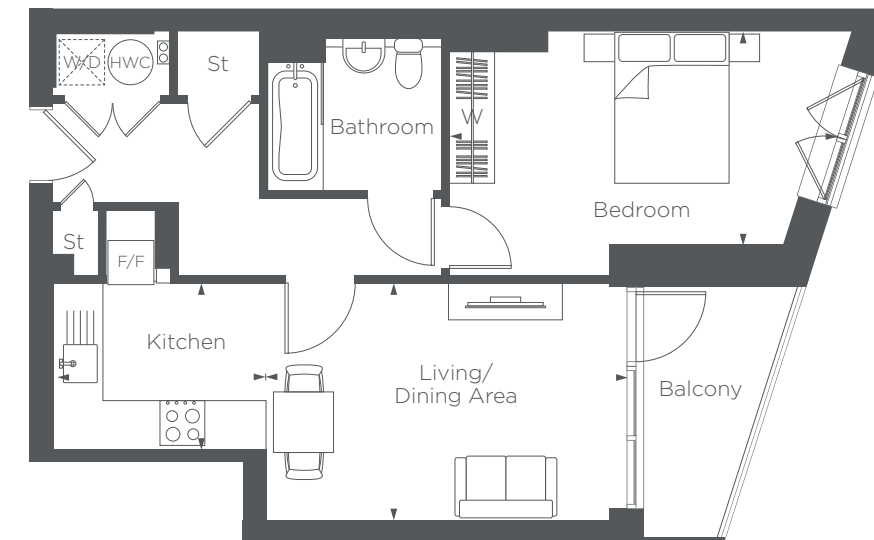
**Kitchen/Living/Dining Area**  
4.46M x 4.33M      14'6" x 14'2"

**Bedroom**  
4.96M x 3.13M      16'2" x 10'2"

**Balcony**  
3.27M x 2.13M      10'7" x 6'9"

# BLOCK C

## PLOTS 60, 68 & 76



**Kitchen**  
2.82M x 2.20M      9'2" x 7'2"

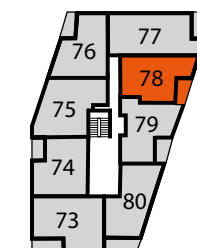
**Living/Dining Area**  
4.77M x 3.14M      15'6" x 10'3"

**Bedroom**  
5.14M x 2.83M      16'8" x 9'2"

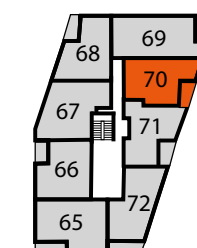
**Balcony**  
3.33M x 1.86M      10'9" x 6'1"

# BLOCK C

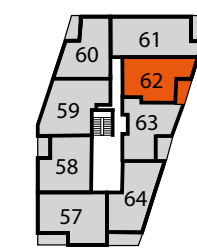
## PLOTS 62, 70 & 78



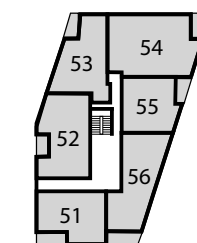
Fourth floor



Third floor



Second floor

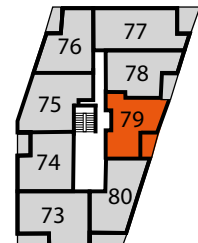


First floor

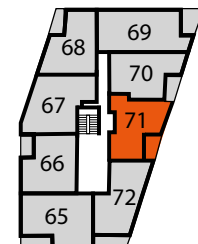
F/F – Fridge/Freezer    HWC – Hot Water Cylinder    St – Store    W/D – Washer Dryer    W – Wardrobe  
 Floorplans shown are indicative only. The kitchen layout and furniture positions are for indicative purposes only. All dimensions indicated are approximate and should not be relied upon for carpet sizes or items of furniture. The developer reserves the right to make changes to these plans prior to exchange of contracts. For exact plot specification, details of external and internal finishes, dimensions and floorplan differences, please speak to a member of our Sales Team for more details.

F/F – Fridge/Freezer    HWC – Hot Water Cylinder    St – Store    W/D – Washer Dryer    W – Wardrobe  
 Floorplans shown are indicative only. The kitchen layout and furniture positions are for indicative purposes only. All dimensions indicated are approximate and should not be relied upon for carpet sizes or items of furniture. The developer reserves the right to make changes to these plans prior to exchange of contracts. For exact plot specification, details of external and internal finishes, dimensions and floorplan differences, please speak to a member of our Sales Team for more details.

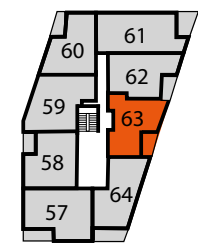




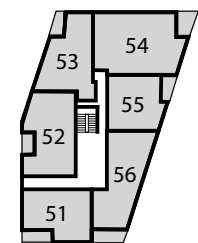
Fourth floor



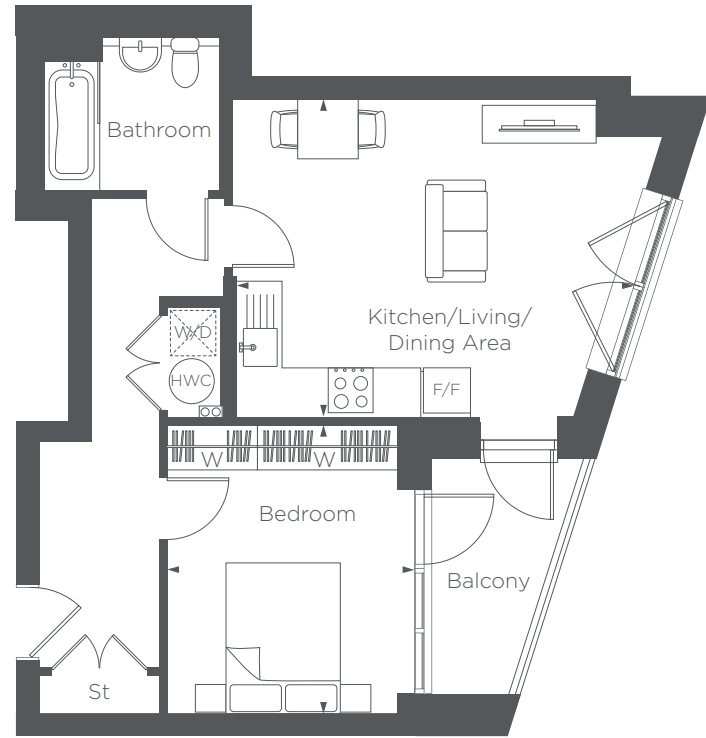
Third floor



Second floor



First floor



**Kitchen/Living/Dining Area**  
5.34M x 4.20M      17'5" x 13'7"

**Bedroom**  
3.81M x 3.05M      12'5" x 10'0"

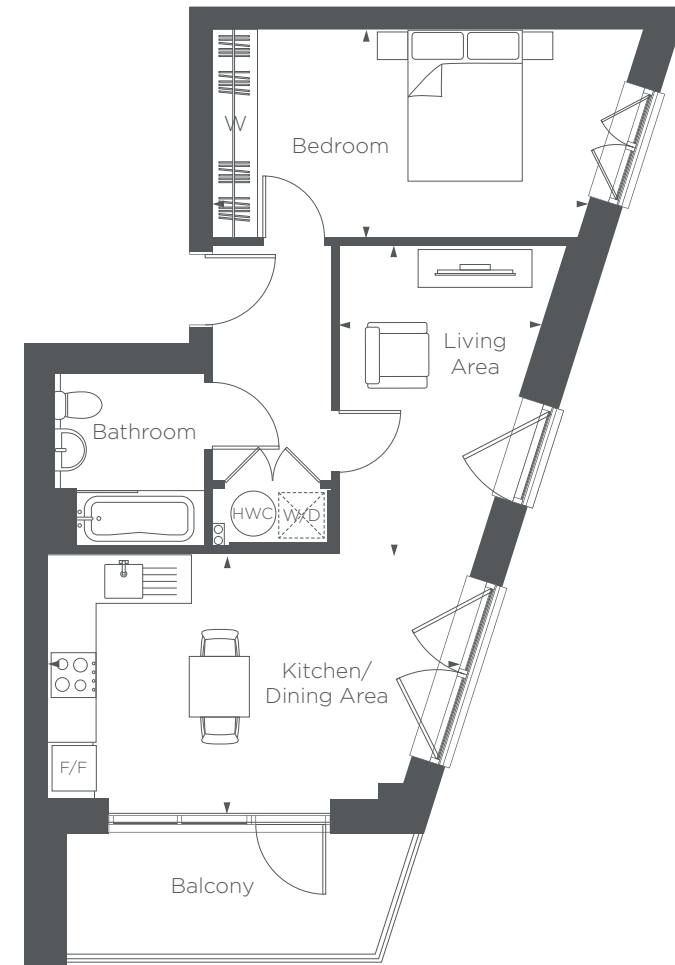
**Balcony**  
3.11M x 1.73M      10'2" x 5'6"

## BLOCK C

PLOTS 63,  
71 & 79

## BLOCK C

PLOTS 64,  
72 & 80

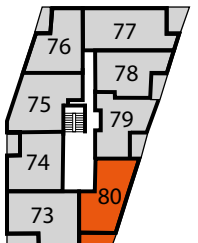


**Kitchen/Dining Area**  
5.45M x 3.46M      17'8" x 11'3"

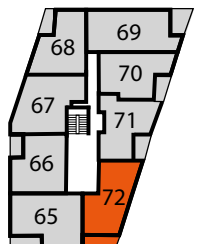
**Living Area**  
4.14M x 3.09M      13'7" x 10'2"

**Bedroom**  
5.27M x 2.75M      17'2" x 9'0"

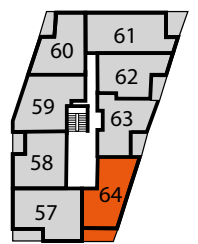
**Balcony**  
4.35M x 1.76M      14'2" x 5'7"



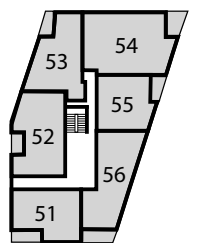
Fourth floor



Third floor



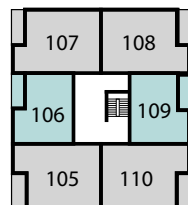
Second floor



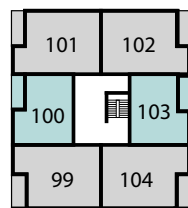
First floor

F/F – Fridge/Freezer    HWC – Hot Water Cylinder    St – Store    W/D – Washer Dryer    W – Wardrobe  
Floorplans shown are indicative only. The kitchen layout and furniture positions are for indicative purposes only. All dimensions indicated are approximate and should not be relied upon for carpet sizes or items of furniture. The developer reserves the right to make changes to these plans prior to exchange of contracts. For exact plot specification, details of external and internal finishes, dimensions and floorplan differences, please speak to a member of our Sales Team for more details.

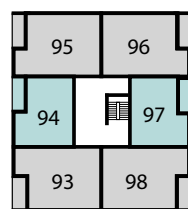




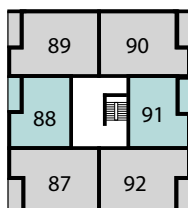
Fifth floor



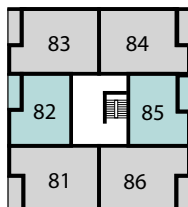
Fourth floor



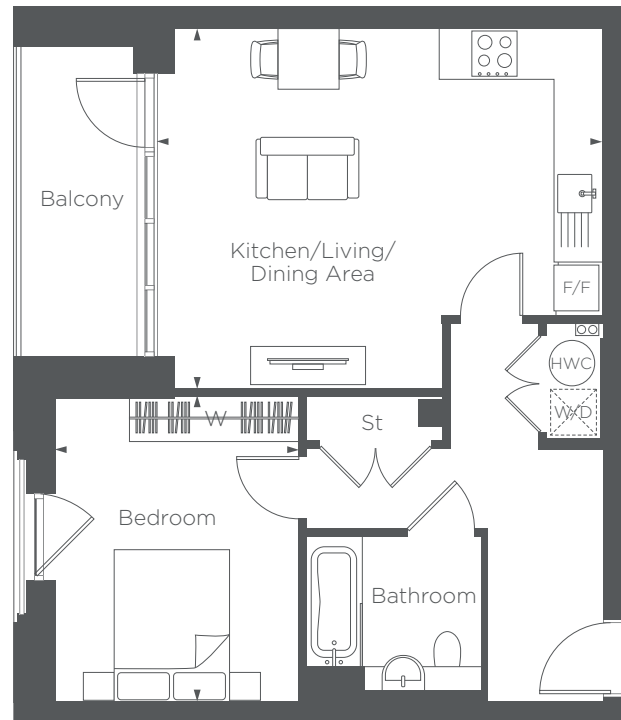
Third floor



Second floor



First floor



**Kitchen/Living/Dining Area**  
5.90M x 4.71M      19'3" x 15'4"

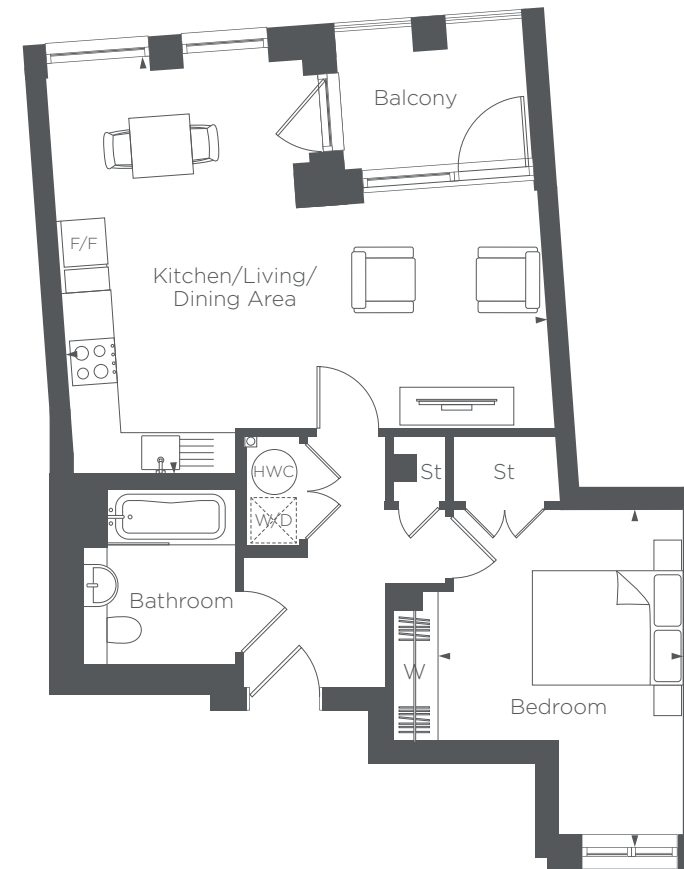
**Bedroom**  
3.99M x 3.19M      13'0" x 10'4"

**Balcony**  
3.76M x 1.63M      12'3" x 5'3"



## BLOCK D

PLOTS 82, 85, 88,  
91, 94, 97, 100,  
103, 106 & 109



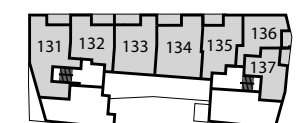
**Kitchen/Living/Dining Area**  
5.61M x 3.30M      18'4" x 10'8"

**Bedroom**  
4.30M x 3.24M      14'1" x 10'6"

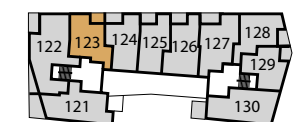
**Balcony**  
2.48M x 1.95M      8'1" x 6'3"



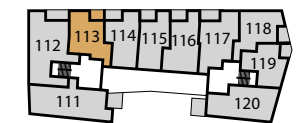
Fourth floor



Third floor



Second floor



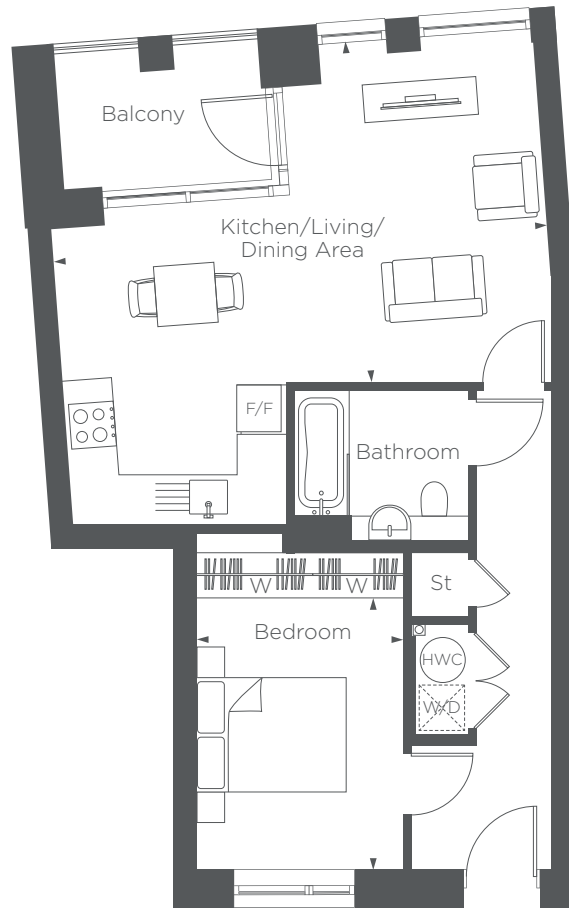
First floor

## BLOCK E

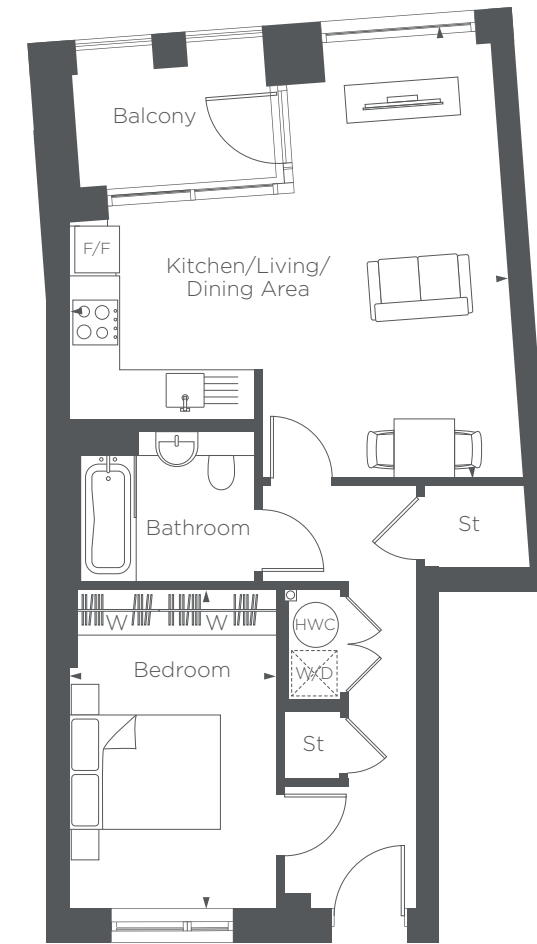
PLOTS 113  
& 123

F/F – Fridge/Freezer    HWC – Hot Water Cylinder    St – Store    W/D – Washer Dryer    W – Wardrobe  
Floorplans shown are indicative only. The kitchen layout and furniture positions are for indicative purposes only. All dimensions indicated are approximate and should not be relied upon for carpet sizes or items of furniture. The developer reserves the right to make changes to these plans prior to exchange of contracts. For exact plot specification, details of external and internal finishes, dimensions and floorplan differences, please speak to a member of our Sales Team for more details.

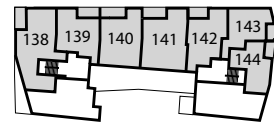
F/F – Fridge/Freezer    HWC – Hot Water Cylinder    St – Store    W/D – Washer Dryer    W – Wardrobe  
Floorplans shown are indicative only. The kitchen layout and furniture positions are for indicative purposes only. All dimensions indicated are approximate and should not be relied upon for carpet sizes or items of furniture. The developer reserves the right to make changes to these plans prior to exchange of contracts. For exact plot specification, details of external and internal finishes, dimensions and floorplan differences, please speak to a member of our Sales Team for more details.



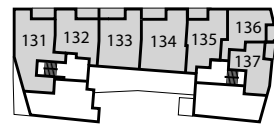
114



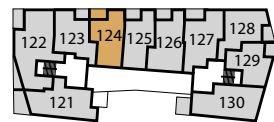
115



Fourth floor



Third floor



Second floor



First floor

**Kitchen/Living/Dining Area**  
6.56M x 4.50M      21'5" x 14'7"

**Bedroom**  
3.59M x 2.75M      11'7" x 9'0"

**Balcony**  
2.71M x 1.95M      8'8" x 6'3"

BLOCK E

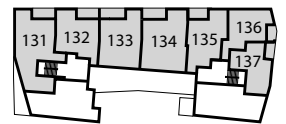
PLOTS 114  
& 124

BLOCK E

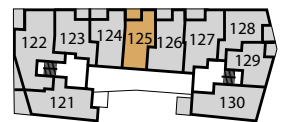
PLOTS 115  
& 125



Fourth floor



Third floor



Second floor



First floor

**Kitchen/Living/Dining Area**  
5.90M x 3.78M      19'4" x 12'5"

**Bedroom**  
3.61M x 2.75M      11'8" x 9'0"

**Balcony**  
2.70M x 1.95M      8'8" x 6'3"

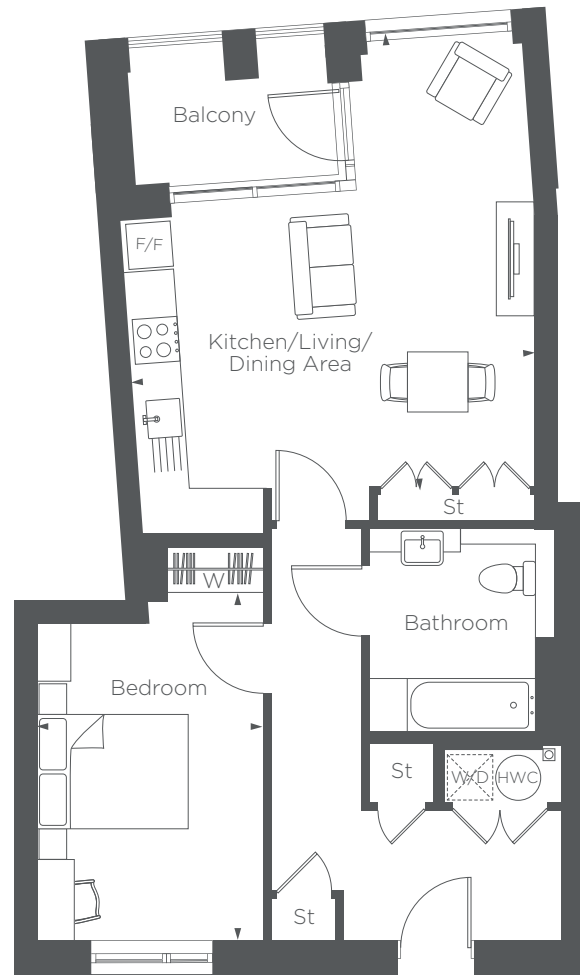
F/F – Fridge/Freezer    HWC – Hot Water Cylinder    St – Store    W/D – Washer Dryer    W – Wardrobe

Floorplans shown are indicative only. The kitchen layout and furniture positions are for indicative purposes only. All dimensions indicated are approximate and should not be relied upon for carpet sizes or items of furniture. The developer reserves the right to make changes to these plans prior to exchange of contracts. For exact plot specification, details of external and internal finishes, dimensions and floorplan differences, please speak to a member of our Sales Team for more details.

F/F – Fridge/Freezer    HWC – Hot Water Cylinder    St – Store    W/D – Washer Dryer    W – Wardrobe

Floorplans shown are indicative only. The kitchen layout and furniture positions are for indicative purposes only. All dimensions indicated are approximate and should not be relied upon for carpet sizes or items of furniture. The developer reserves the right to make changes to these plans prior to exchange of contracts. For exact plot specification, details of external and internal finishes, dimensions and floorplan differences, please speak to a member of our Sales Team for more details.





116



Fourth floor



Third floor



Second floor



First floor

**Kitchen/Living/Dining Area**  
5.93M x 5.34M      19'4" x 17'5"

**Bedroom**  
4.60M x 3.00M      15'0" x 9'8"

**Balcony**  
2.33M x 1.95m      7'6" x 6'3"

# BLOCK E

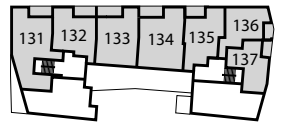
PLOTS 116  
& 126

# BLOCK E

PLOTS 118  
& 128



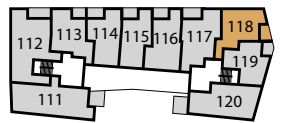
Fourth floor



Third floor



Second floor



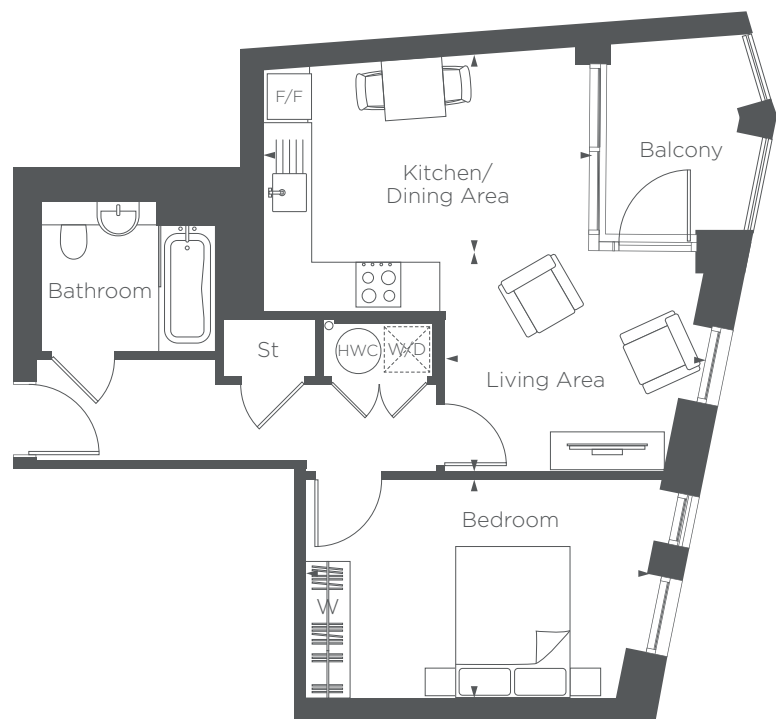
First floor

**Kitchen/Living/Dining Area**  
6.07M x 5.16M      19'9" x 16'9"

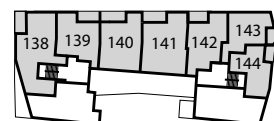
**Bedroom**  
4.23M x 3.21M      13'8" x 10'5"

**Balcony**  
2.98M x 1.94m      9'7" x 6'3"

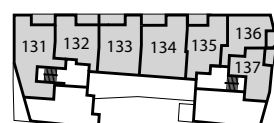
F/F – Fridge/Freezer    HWC – Hot Water Cylinder    St – Store    W/D – Washer Dryer    W – Wardrobe  
Floorplans shown are indicative only. The kitchen layout and furniture positions are for indicative purposes only. All dimensions indicated are approximate and should not be relied upon for carpet sizes or items of furniture. The developer reserves the right to make changes to these plans prior to exchange of contracts. For exact plot specification, details of external and internal finishes, dimensions and floorplan differences, please speak to a member of our Sales Team for more details.



119  
129



Fourth floor



Third floor



Second floor



First floor

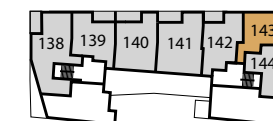
<b>Kitchen/Dining Area</b>	4.33M × 3.19M	14'2" × 10'4"
<b>Living Area</b>	2.93M × 2.92M	9'6" × 9'5"
<b>Bedroom</b>	4.74M × 2.89M	15'5" × 9'4"
<b>Balcony</b>	2.65M × 2.09M	8'6" × 6'8"

# BLOCK E

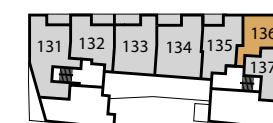
PLOTS 119  
& 129

# BLOCK E

PLOTS 136  
& 143



Fourth floor



Third floor



Second floor

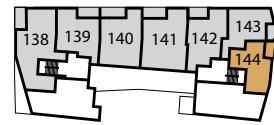
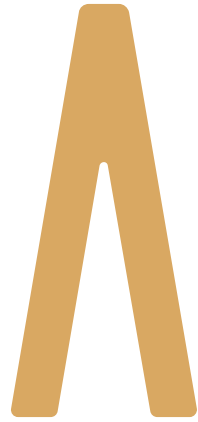
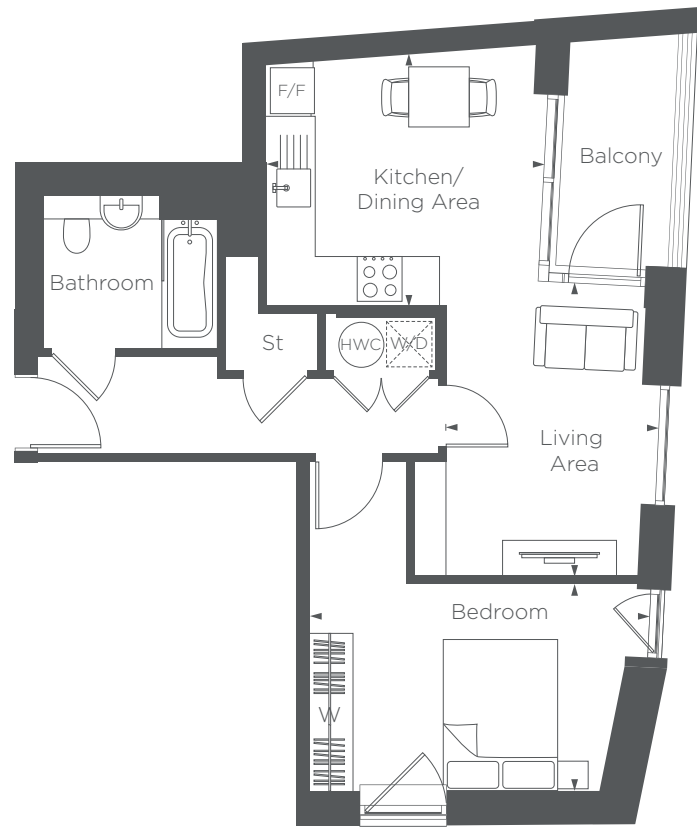


First floor

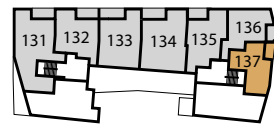
<b>Kitchen/Living/Dining Area</b>	6.07M × 5.16M	19'9" × 16'9"
<b>Bedroom</b>	4.25M × 3.21m	13'9" × 10'5"
<b>Balcony</b>	2.98M × 1.94m	9'7" × 6'3"

F/F – Fridge/Freezer HWC – Hot Water Cylinder St – Store W/D – Washer Dryer W – Wardrobe  
 Floorplans shown are indicative only. The kitchen layout and furniture positions are for indicative purposes only. All dimensions indicated are approximate and should not be relied upon for carpet sizes or items of furniture. The developer reserves the right to make changes to these plans prior to exchange of contracts. For exact plot specification, details of external and internal finishes, dimensions and floorplan differences, please speak to a member of our Sales Team for more details.





Fourth floor



Third floor



Second floor



First floor

**Kitchen/Dining Area**  
3.70M x 3.33M      12'1" x 10'9"

**Living Area**  
3.91M x 2.81M      12'8" x 9'2"

**Bedroom**  
4.55M x 2.75M      14'9" x 9'0"

**Balcony**  
3.08M x 1.66M      10'1" x 5'4"

# BLOCK E

## PLOTS 137 & 144



F/F – Fridge/Freezer    HWC – Hot Water Cylinder    St – Store    W/D – Washer Dryer    W – Wardrobe

Floorplans shown are indicative only. The kitchen layout and furniture positions are for indicative purposes only. All dimensions indicated are approximate and should not be relied upon for carpet sizes or items of furniture. The developer reserves the right to make changes to these plans prior to exchange of contracts. For exact plot specification, details of external and internal finishes, dimensions and floorplan differences, please speak to a member of our Sales Team for more details.



# 02

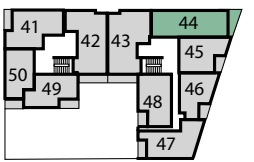
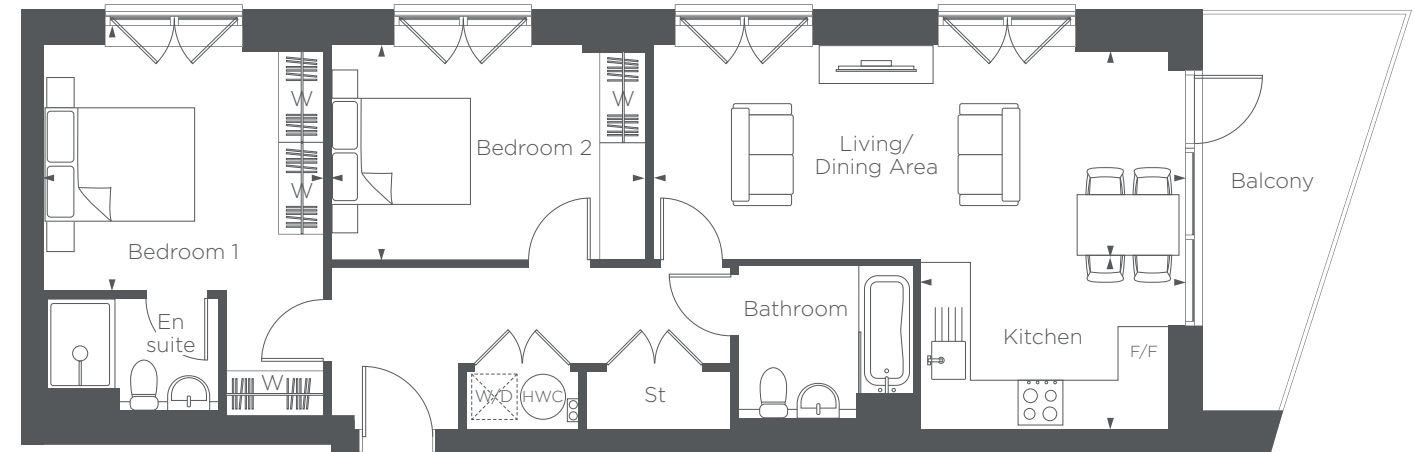
## BEDROOM APARTMENTS

DESIGNED TO  
GIVE YOU THE

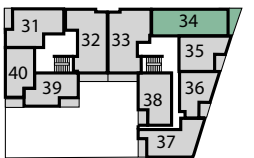
# FREEDOM TO FLOW

THROUGHOUT

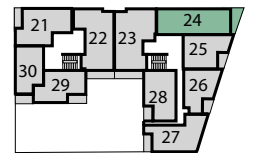
HACKNEY | E3



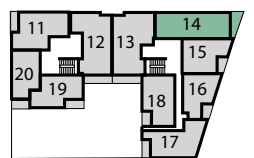
Fourth floor



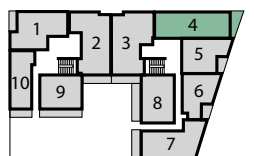
Third floor



Second floor



First floor



Ground floor

## BLOCK B

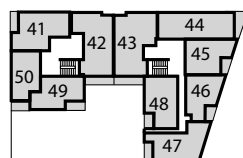
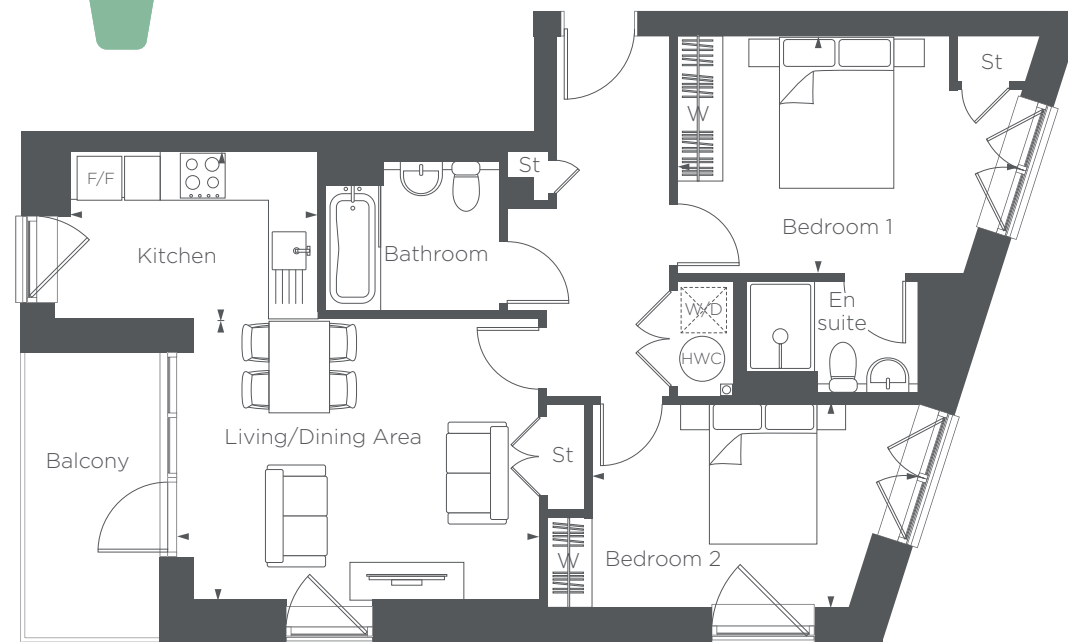
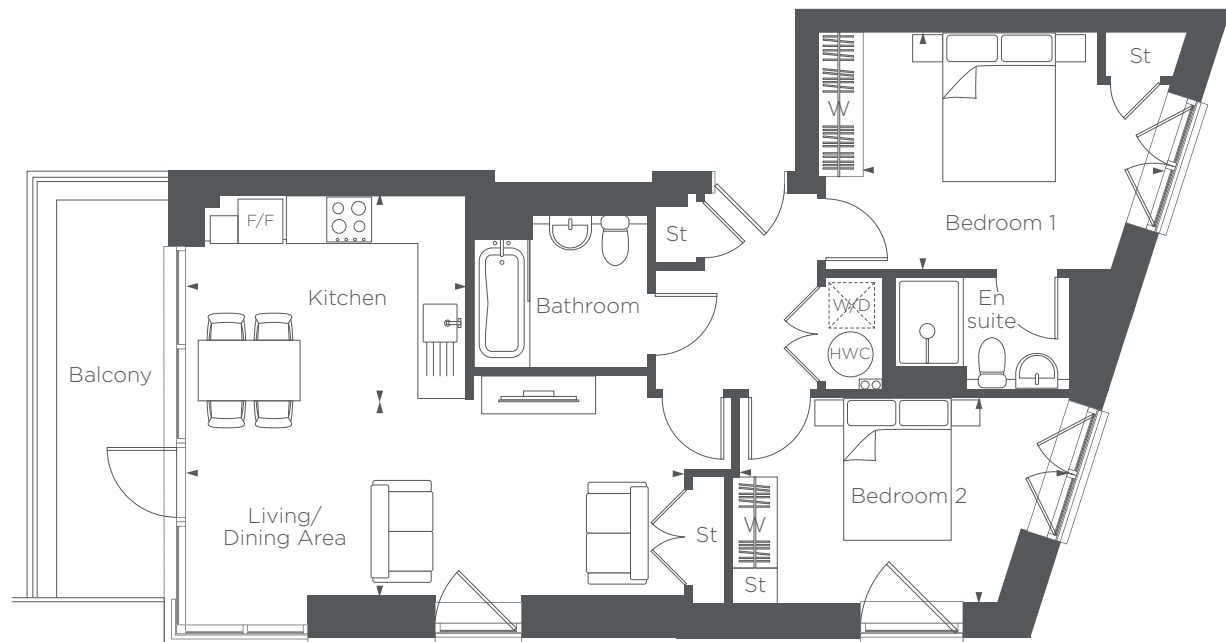
PLOTS 4,  
14, 24, 34  
& 44

<b>Kitchen</b>	3.26M x 2.14M	10'8" x 7'0"
<b>Living/Dining Area</b>	7.04M x 2.84M	23'0" x 9'3"
<b>Bedroom 1</b>	3.71M x 3.27M	12'1" x 10'7"
<b>Bedroom 2</b>	4.15M x 2.84m	13'6" x 9'3"
<b>Balcony</b>	5.32M x 2.28M	17'4" x 7'4"

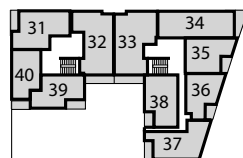
F/F – Fridge/Freezer HWC – Hot Water Cylinder St – Store W/D – Washer Dryer W – Wardrobe  
Floorplans shown are indicative only. The kitchen layout and furniture positions are for indicative purposes only. All dimensions indicated are approximate and should not be relied upon for carpet sizes or items of furniture. The developer reserves the right to make changes to these plans prior to exchange of contracts. For exact plot specification, details of external and internal finishes, dimensions and floorplan differences, please speak to a member of our Sales Team for more details.



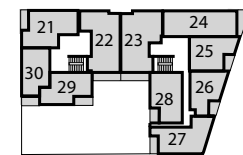




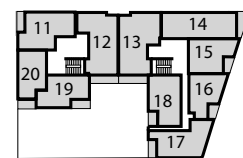
Fourth floor



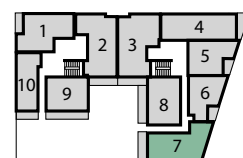
Third floor



Second floor



First floor



Ground floor

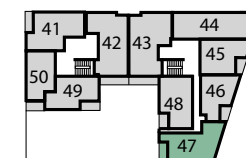
<b>Kitchen</b>	3.74M × 2.69M	12'2" × 8'8"
<b>Living/Dining Area</b>	6.64M × 2.93M	21'7" × 9'6"
<b>Bedroom 1</b>	3.79M × 3.14M	12'4" × 10'3"
<b>Bedroom 2</b>	4.33M × 2.72M	14'2" × 8'9"
<b>Balcony</b>	5.34M × 1.84M	17'5" × 6'0"

# BLOCK B

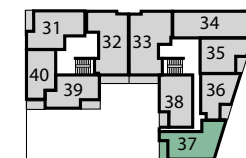
## PLOT 7

# BLOCK B

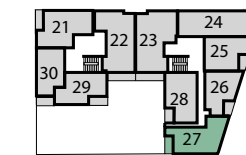
## PLOTS 17, 27, 37 & 47



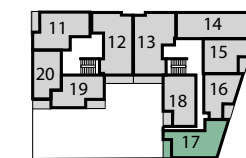
Fourth floor



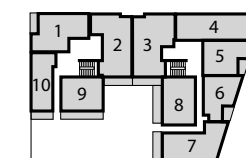
Third floor



Second floor



First floor

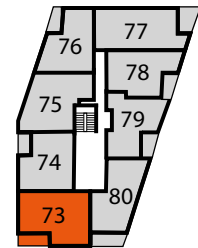


Ground floor

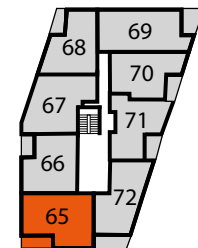
<b>Kitchen</b>	3.28M × 2.21M	10'7" × 7'2"
<b>Living/Dining Area</b>	4.58M × 3.72M	15'0" × 12'2"
<b>Bedroom 1</b>	4.49M × 3.14M	14'7" × 10'3"
<b>Bedroom 2</b>	3.98M × 2.70M	13'0" × 8'8"
<b>Balcony</b>	3.64M × 1.78M	11'9" × 5'8"

F/F – Fridge/Freezer HWC – Hot Water Cylinder St – Store W/D – Washer Dryer W – Wardrobe  
 Floorplans shown are indicative only. The kitchen layout and furniture positions are for indicative purposes only. All dimensions indicated are approximate and should not be relied upon for carpet sizes or items of furniture. The developer reserves the right to make changes to these plans prior to exchange of contracts. For exact plot specification, details of external and internal finishes, dimensions and floorplan differences, please speak to a member of our Sales Team for more details.

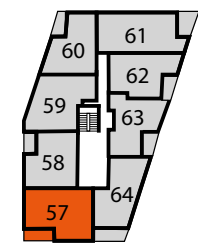
F/F – Fridge/Freezer HWC – Hot Water Cylinder St – Store W/D – Washer Dryer W – Wardrobe  
 Floorplans shown are indicative only. The kitchen layout and furniture positions are for indicative purposes only. All dimensions indicated are approximate and should not be relied upon for carpet sizes or items of furniture. The developer reserves the right to make changes to these plans prior to exchange of contracts. For exact plot specification, details of external and internal finishes, dimensions and floorplan differences, please speak to a member of our Sales Team for more details.



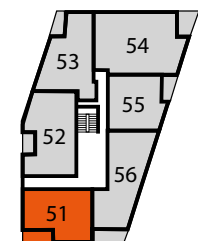
Fourth floor



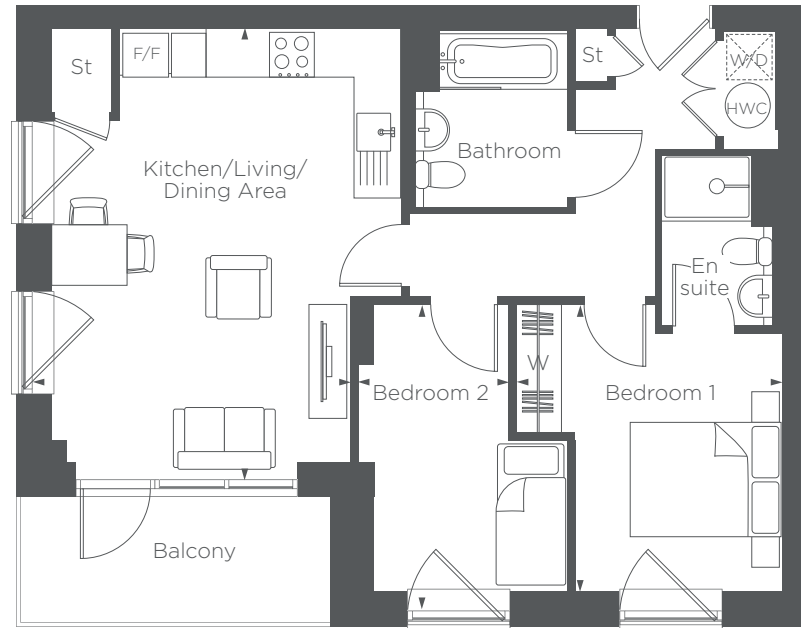
Third floor



Second floor



First floor



**Kitchen/Living/Dining Area**  
5.96M x 4.22M      19'5" x 13'8"

**Bedroom 1**  
3.81M x 2.92M      12'5" x 9'5"

**Bedroom 2**  
4.05M x 1.98M      13'2" x 6'4"

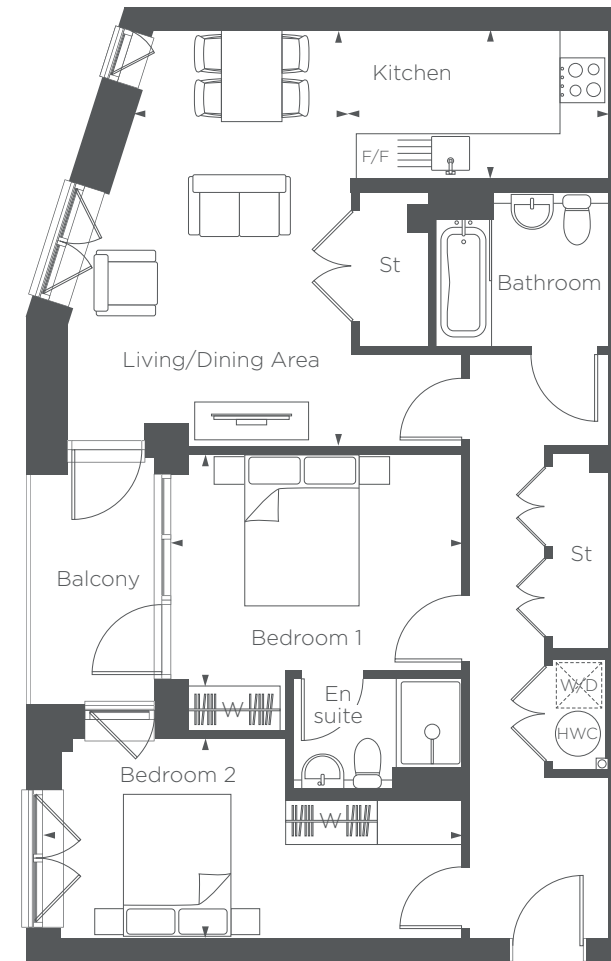
**Balcony**  
4.10M x 1.76m      13'4" x 5'7"

# BLOCK C

PLOTS 51,  
57, 65 & 73

# BLOCK C

PLOT 52



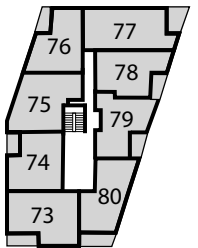
**Kitchen**  
3.35M x 2.01M      10'9" x 6'5"

**Living/Dining Area**  
5.50M x 3.76M      18'0" x 12'3"

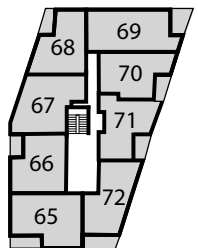
**Bedroom 1**  
3.84M x 3.06M      12'5" x 10'0"

**Bedroom 2**  
5.31M x 2.64M      17'4" x 8'6"

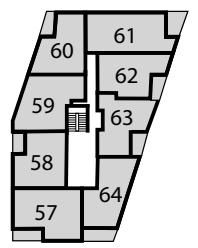
**Balcony**  
3.37M x 1.73M      11'0" x 5'6"



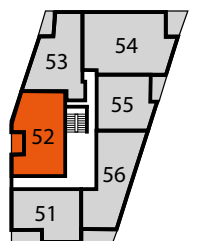
Fourth floor



Third floor



Second floor

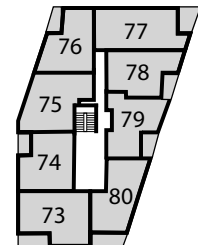


First floor

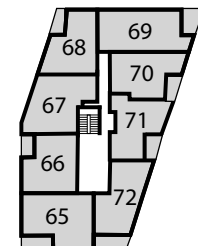
F/F – Fridge/Freezer    HWC – Hot Water Cylinder    St – Store    W/D – Washer Dryer    W – Wardrobe  
Floorplans shown are indicative only. The kitchen layout and furniture positions are for indicative purposes only. All dimensions indicated are approximate and should not be relied upon for carpet sizes or items of furniture. The developer reserves the right to make changes to these plans prior to exchange of contracts. For exact plot specification, details of external and internal finishes, dimensions and floorplan differences, please speak to a member of our Sales Team for more details.

F/F – Fridge/Freezer    HWC – Hot Water Cylinder    St – Store    W/D – Washer Dryer    W – Wardrobe  
Floorplans shown are indicative only. The kitchen layout and furniture positions are for indicative purposes only. All dimensions indicated are approximate and should not be relied upon for carpet sizes or items of furniture. The developer reserves the right to make changes to these plans prior to exchange of contracts. For exact plot specification, details of external and internal finishes, dimensions and floorplan differences, please speak to a member of our Sales Team for more details.

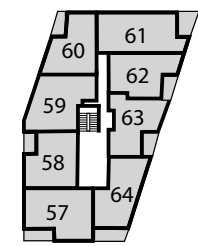




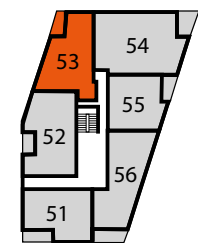
Fourth floor



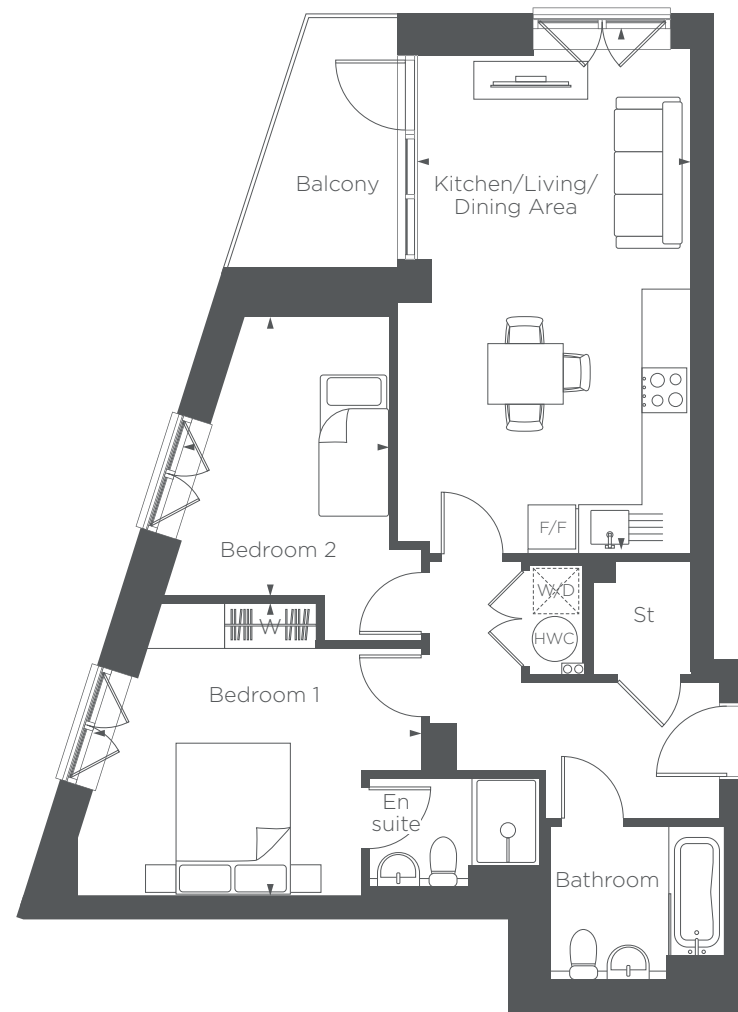
Third floor



Second floor



First floor



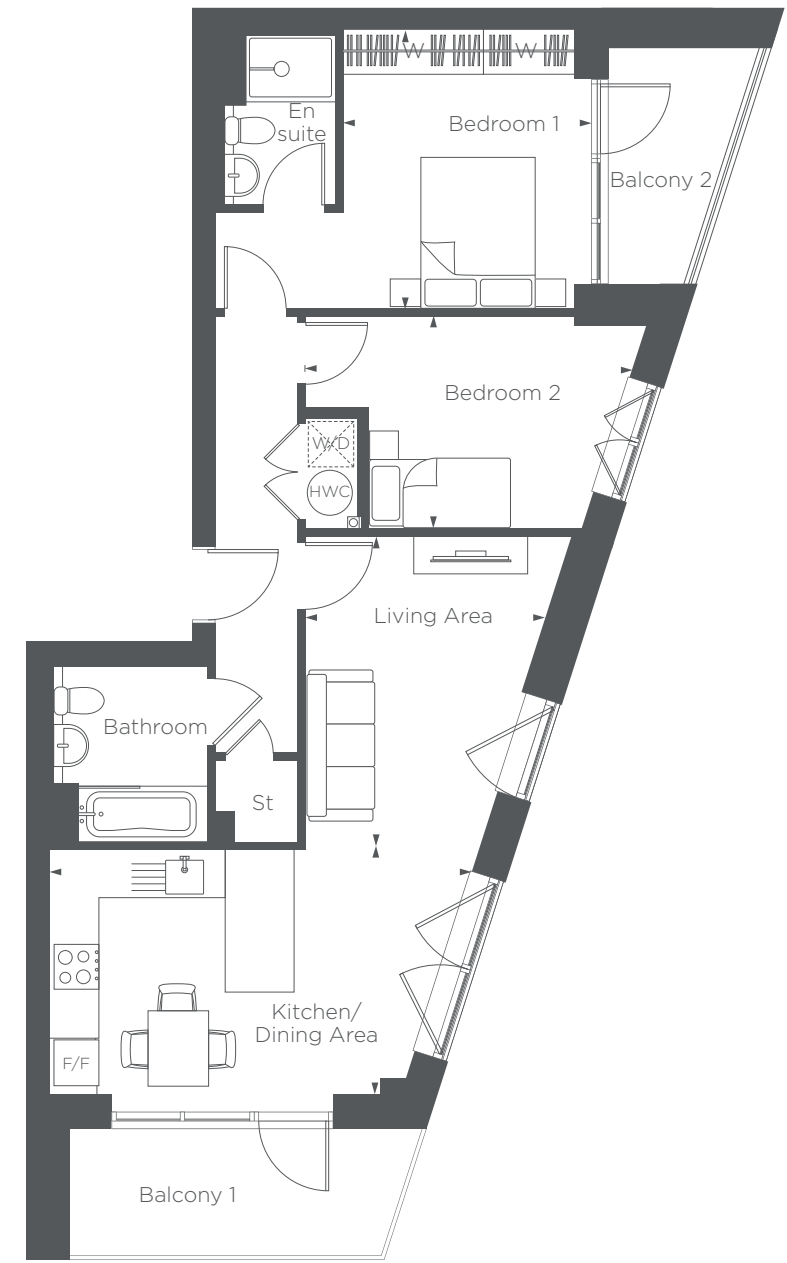
- Kitchen/Living/Dining Area**  
6.70M x 3.65M      21'9" x 11'9"
- Bedroom 1**  
3.87M x 3.75M      12'6" x 12'3"
- Bedroom 2**  
3.70M x 3.42M      12'1" x 11'2"
- Balcony**  
3.31M x 1.88M      10'8" x 6'1"

# BLOCK C

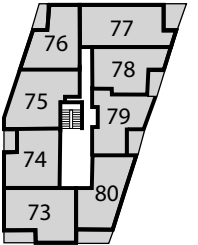
## PLOT 53

# BLOCK C

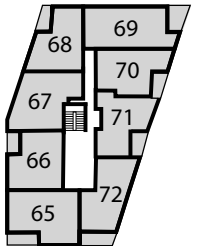
## PLOT 56



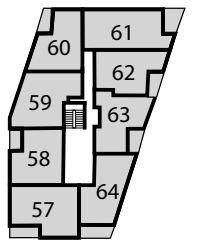
- Kitchen/Dining Area**  
4.70M x 3.41M      15'4" x 11'1"
- Living Area**  
4.14M x 2.87M      13'5" x 9'4"
- Bedroom 1**  
3.69M x 3.28M      12'1" x 10'7"
- Bedroom 2**  
4.33M x 2.81M      14'2" x 9'2"
- Balcony 1**  
4.40M x 1.76M      14'4" x 5'7"
- Balcony 2**  
3.11M x 1.88M      10'2" x 6'1"



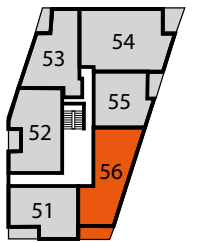
Fourth floor



Third floor



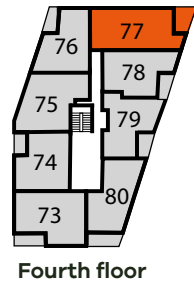
Second floor



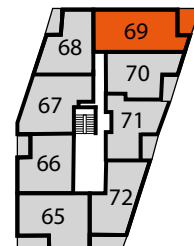
First floor

F/F – Fridge/Freezer    HWC – Hot Water Cylinder    St – Store    W/D – Washer Dryer    W – Wardrobe  
 Floorplans shown are indicative only. The kitchen layout and furniture positions are for indicative purposes only. All dimensions indicated are approximate and should not be relied upon for carpet sizes or items of furniture. The developer reserves the right to make changes to these plans prior to exchange of contracts. For exact plot specification, details of external and internal finishes, dimensions and floorplan differences, please speak to a member of our Sales Team for more details.

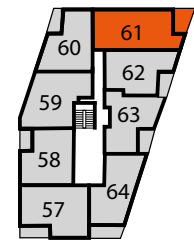
F/F – Fridge/Freezer    HWC – Hot Water Cylinder    St – Store    W/D – Washer Dryer    W – Wardrobe  
 Floorplans shown are indicative only. The kitchen layout and furniture positions are for indicative purposes only. All dimensions indicated are approximate and should not be relied upon for carpet sizes or items of furniture. The developer reserves the right to make changes to these plans prior to exchange of contracts. For exact plot specification, details of external and internal finishes, dimensions and floorplan differences, please speak to a member of our Sales Team for more details.



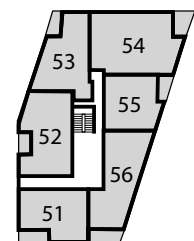
Fourth floor



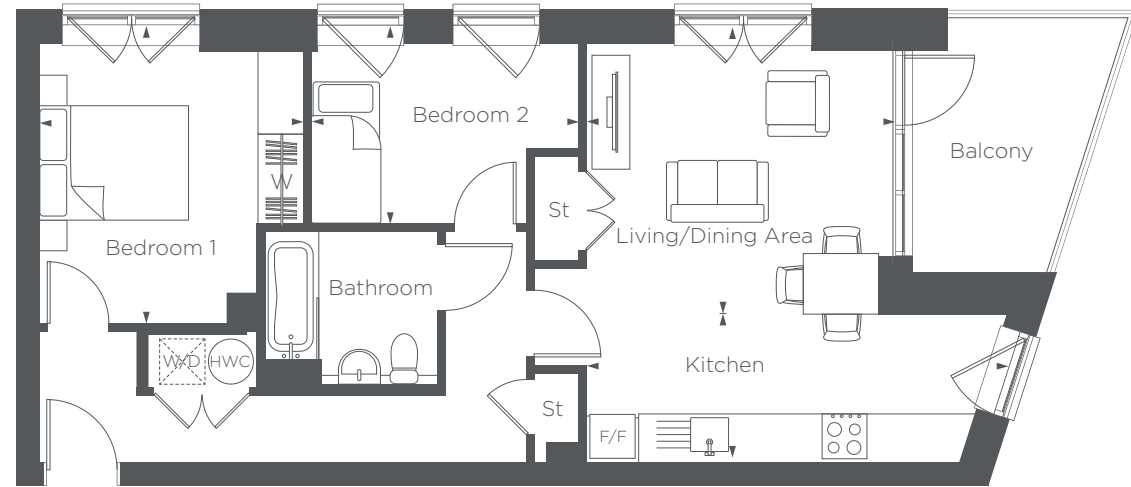
Third floor



Second floor



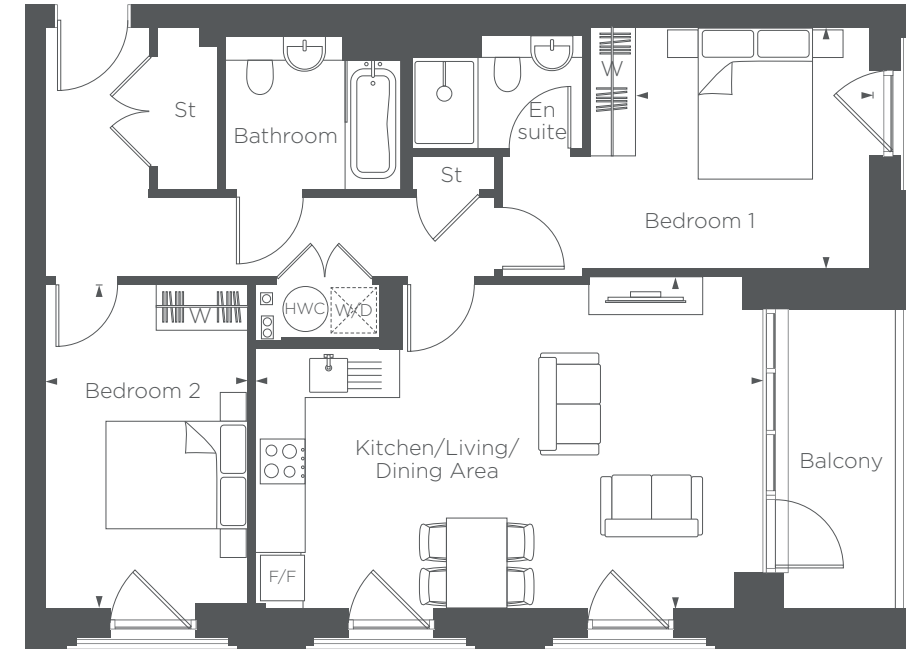
First floor



<b>Kitchen</b>	4.93M x 1.97M	16'1" x 6'4"
<b>Living/Dining Area</b>	4.08M x 3.47M	13'3" x 11'3"
<b>Bedroom 1</b>	3.70M x 3.50M	12'1" x 11'4"
<b>Bedroom 2</b>	3.54M x 2.40M	11'6" x 7'8"
<b>Balcony</b>	3.42M x 2.64M	11'2" x 8'6"

## BLOCK C

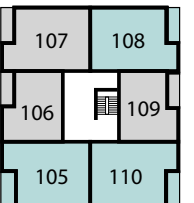
PLOTS 61,  
69 & 77



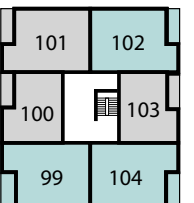
<b>Kitchen/Living/Dining Area</b>	6.74M x 4.40M	22'1" x 14'4"
<b>Bedroom 1</b>	3.73M x 3.13M	12'2" x 10'2"
<b>Bedroom 2</b>	4.44M x 2.65M	14'5" x 8'6"
<b>Balcony</b>	3.94M x 1.74M	12'9" x 5'7"

## BLOCK D

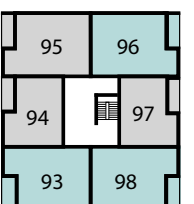
PLOTS 81, 84, 86,  
87, 90, 92, 93,  
96, 98, 99, 102,  
104, 105, 108 & 110



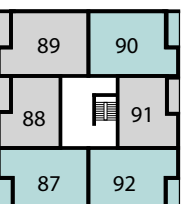
Fifth floor



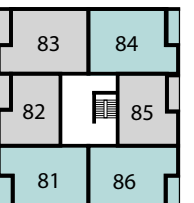
Fourth floor



Third floor



Second floor



First floor

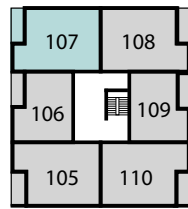
F/F – Fridge/Freezer HWC – Hot Water Cylinder St – Store W/D – Washer Dryer W – Wardrobe

Floorplans shown are indicative only. The kitchen layout and furniture positions are for indicative purposes only. All dimensions indicated are approximate and should not be relied upon for carpet sizes or items of furniture. The developer reserves the right to make changes to these plans prior to exchange of contracts. For exact plot specification, details of external and internal finishes, dimensions and floorplan differences, please speak to a member of our Sales Team for more details.

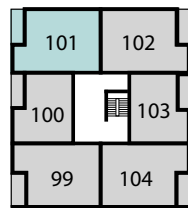
F/F – Fridge/Freezer HWC – Hot Water Cylinder St – Store W/D – Washer Dryer W – Wardrobe

Floorplans shown are indicative only. The kitchen layout and furniture positions are for indicative purposes only. All dimensions indicated are approximate and should not be relied upon for carpet sizes or items of furniture. The developer reserves the right to make changes to these plans prior to exchange of contracts. For exact plot specification, details of external and internal finishes, dimensions and floorplan differences, please speak to a member of our Sales Team for more details.

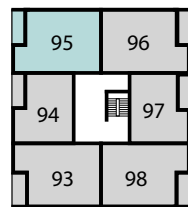




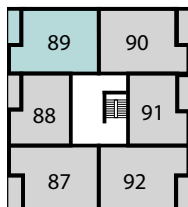
Fifth floor



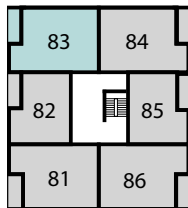
Fourth floor



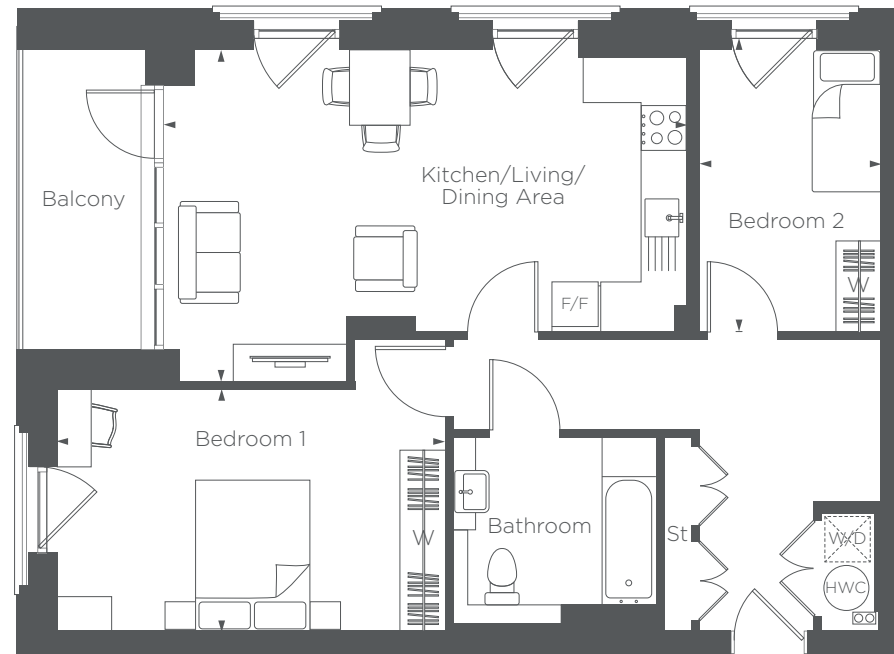
Third floor



Second floor



First floor



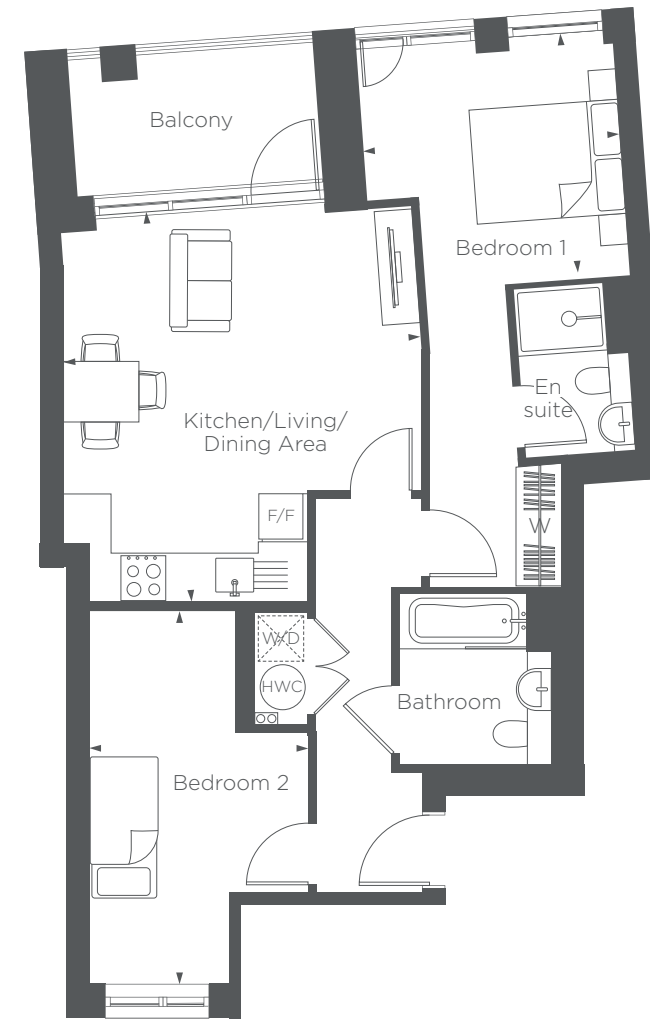
<b>Kitchen/Living/Dining Area</b>	6.99M x 4.40M	22'9" x 14'4"
<b>Bedroom 1</b>	5.13M x 3.19M	16'8" x 10'4"
<b>Bedroom 2</b>	3.88M x 2.40	12'7" x 7'8"
<b>Balcony</b>	3.94M x 1.74M	12'9" x 5'7"

## BLOCK D

PLOTS 83,  
89, 95, 101  
& 107

F/F – Fridge/Freezer HWC – Hot Water Cylinder St – Store W/D – Washer Dryer W – Wardrobe

Floorplans shown are indicative only. The kitchen layout and furniture positions are for indicative purposes only. All dimensions indicated are approximate and should not be relied upon for carpet sizes or items of furniture. The developer reserves the right to make changes to these plans prior to exchange of contracts. For exact plot specification, details of external and internal finishes, dimensions and floorplan differences, please speak to a member of our Sales Team for more details.



<b>Kitchen/Living/Dining Area</b>	5.17M x 4.74M	16'9" x 15'5"
<b>Bedroom 1</b>	3.41M x 3.26M	11'1" x 10'6"
<b>Bedroom 2</b>	4.94M x 2.90M	16'2" x 9'5"
<b>Balcony</b>	3.27M x 1.96M	10'7" x 6'4"

## BLOCK E

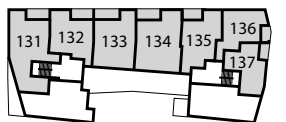
PLOTS 117  
& 127

F/F – Fridge/Freezer HWC – Hot Water Cylinder St – Store W/D – Washer Dryer W – Wardrobe

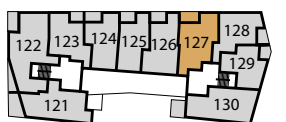
Floorplans shown are indicative only. The kitchen layout and furniture positions are for indicative purposes only. All dimensions indicated are approximate and should not be relied upon for carpet sizes or items of furniture. The developer reserves the right to make changes to these plans prior to exchange of contracts. For exact plot specification, details of external and internal finishes, dimensions and floorplan differences, please speak to a member of our Sales Team for more details.



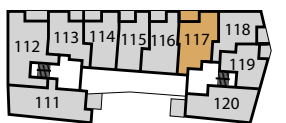
Fourth floor



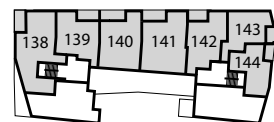
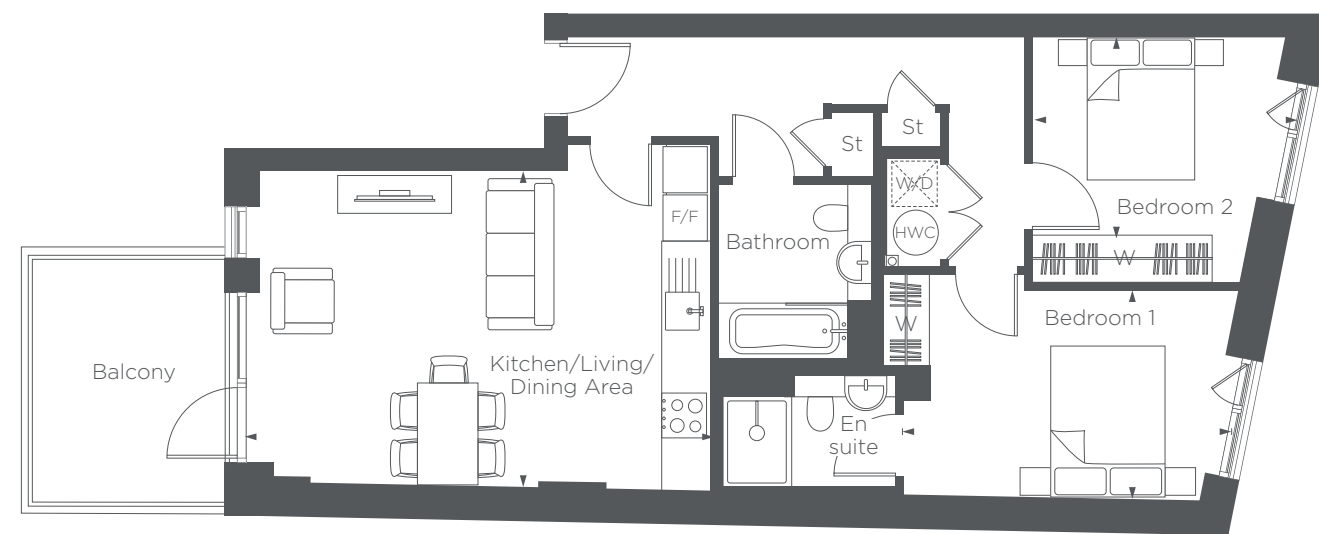
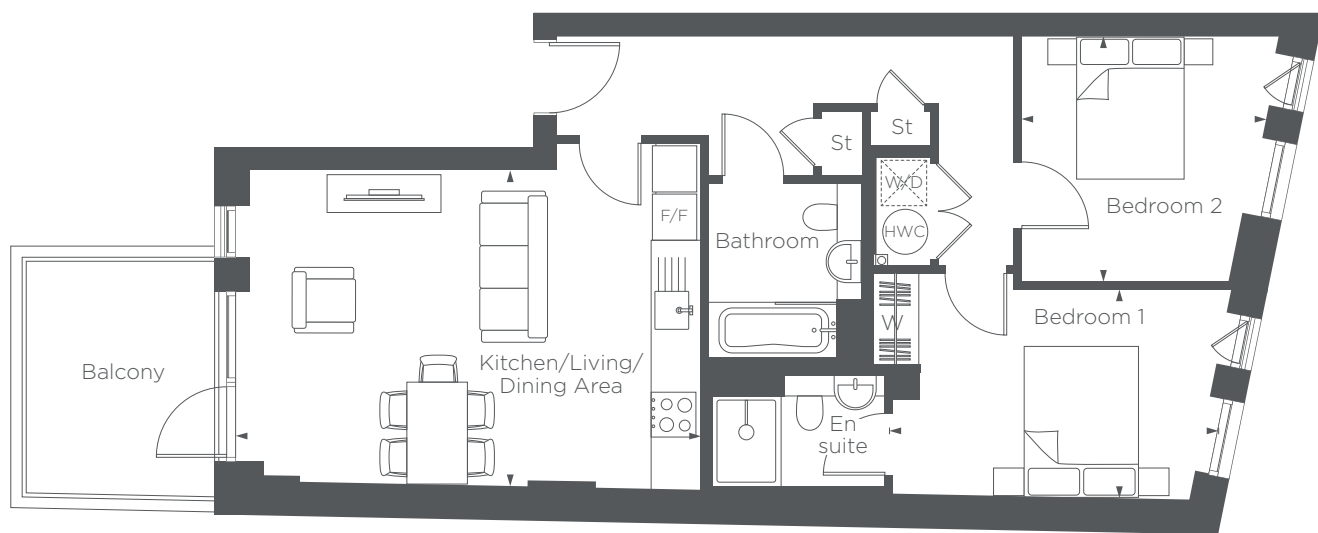
Third floor



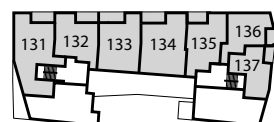
Second floor



First floor



Fourth floor



Third floor



Second floor



First floor

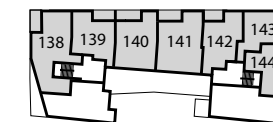
<b>Kitchen/Living/Dining Area</b>	6.15M × 4.18M	20'1" × 13'7"
<b>Bedroom 1</b>	3.95M × 2.76M	12'9" × 9'0"
<b>Bedroom 2</b>	3.43M × 3.25M	11'2" × 10'6"
<b>Balcony</b>	3.07M × 2.64M	10'0" × 8'6"

# BLOCK E

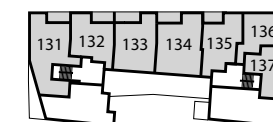
## PLOT 130

# BLOCK E

## PLOT 120



Fourth floor



Third floor



Second floor

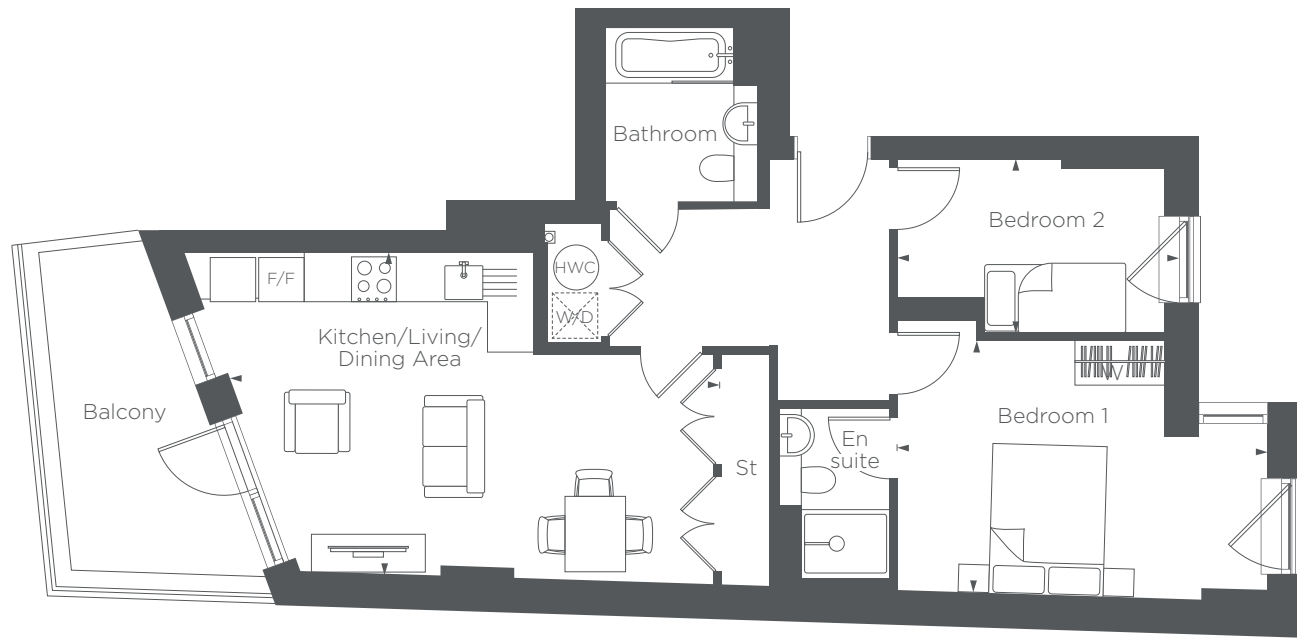


First floor

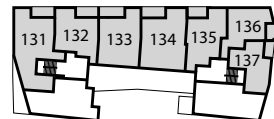
<b>Kitchen/Living/Dining Area</b>	6.15M × 4.18M	20'1" × 13'7"
<b>Bedroom 1</b>	4.35M × 2.76M	14'2" × 9'0"
<b>Bedroom 2</b>	3.43M × 3.25M	11'2" × 10'6"
<b>Balcony</b>	3.22M × 2.69M	10'5" × 8'8"

F/F – Fridge/Freezer HWC – Hot Water Cylinder St – Store W/D – Washer Dryer W – Wardrobe  
 Floorplans shown are indicative only. The kitchen layout and furniture positions are for indicative purposes only. All dimensions indicated are approximate and should not be relied upon for carpet sizes or items of furniture. The developer reserves the right to make changes to these plans prior to exchange of contracts. For exact plot specification, details of external and internal finishes, dimensions and floorplan differences, please speak to a member of our Sales Team for more details.





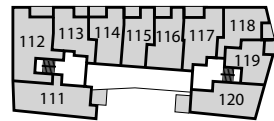
Fourth floor



Third floor



Second floor

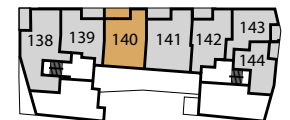
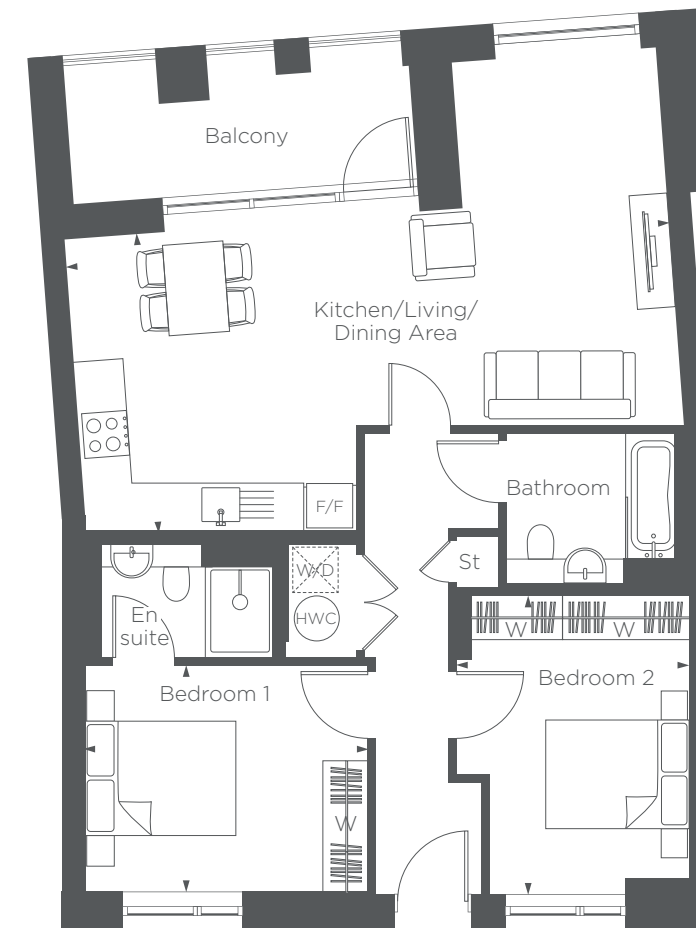


First floor

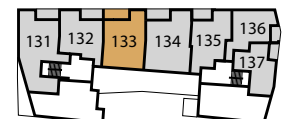
<b>Kitchen/Living/Dining Area</b>	6.24M x 4.25M	20'4" x 13'9"
<b>Bedroom 1</b>	4.88M x 3.35M	16'0" x 10'9"
<b>Bedroom 2</b>	3.72M x 2.28M	12'2" x 7'4"
<b>Balcony</b>	4.25M x 2.57M	13'9" x 8'4"

# BLOCK E

## PLOT 121



Fourth floor



Third floor



Second floor



First floor

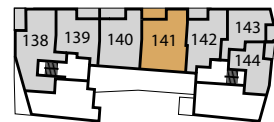
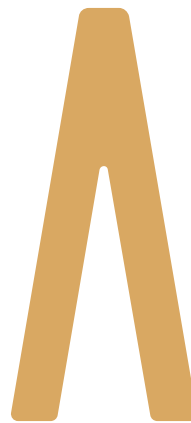
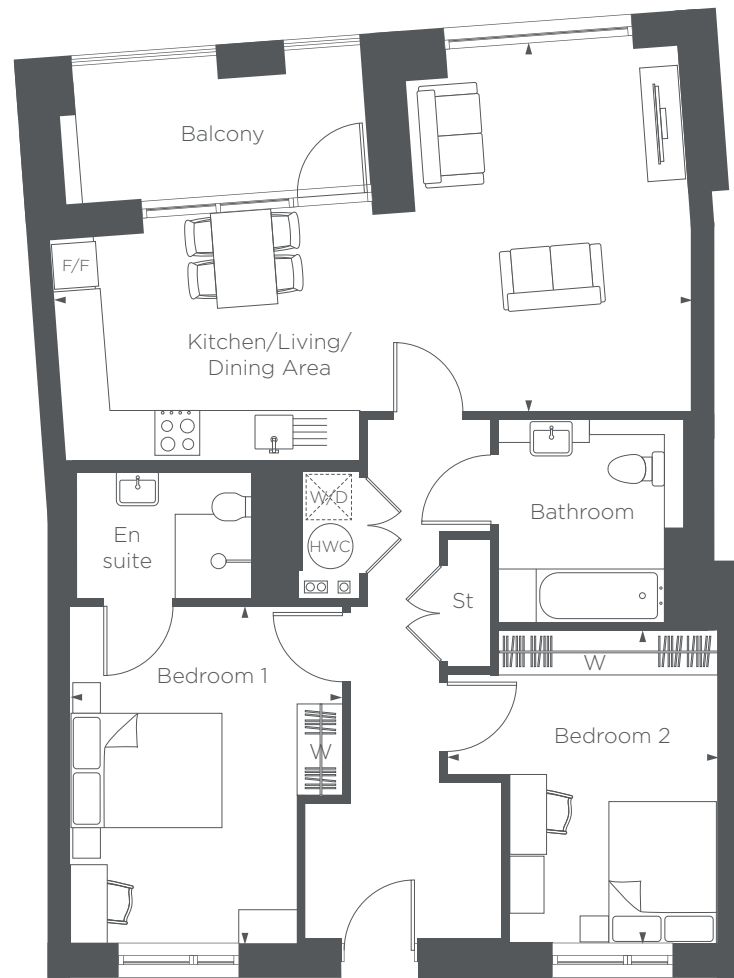
<b>Kitchen/Living/Dining Area</b>	8.02M x 3.98M	26'3" x 13'0"
<b>Bedroom 1</b>	3.75M x 3.21M	12'3" x 10'5"
<b>Bedroom 2</b>	3.97M x 3.08M	13'0" x 10'1"
<b>Balcony</b>	4.58M x 1.81M	15'0" x 5'9"

# BLOCK E

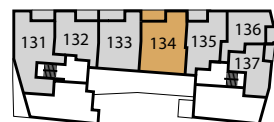
## PLOTS 133 & 140

F/F – Fridge/Freezer HWC – Hot Water Cylinder St – Store W/D – Washer Dryer W – Wardrobe  
 Floorplans shown are indicative only. The kitchen layout and furniture positions are for indicative purposes only. All dimensions indicated are approximate and should not be relied upon for carpet sizes or items of furniture. The developer reserves the right to make changes to these plans prior to exchange of contracts. For exact plot specification, details of external and internal finishes, dimensions and floorplan differences, please speak to a member of our Sales Team for more details.





Fourth floor



Third floor



Second floor



First floor

**Kitchen/Living/Dining Area**  
8.42M x 4.87M      27'6" x 15'9"

**Bedroom 1**  
4.47M x 3.60M      14'6" x 11'8"

**Bedroom 2**  
4.14M x 3.55M      13'5" x 11'6"

**Balcony**  
4.06M x 1.92M      13'3" x 6'2"

# BLOCK E

## PLOTS 134 & 141



F/F – Fridge/Freezer    HWC – Hot Water Cylinder    St – Store    W/D – Washer Dryer    W – Wardrobe  
 Floorplans shown are indicative only. The kitchen layout and furniture positions are for indicative purposes only. All dimensions indicated are approximate and should not be relied upon for carpet sizes or items of furniture. The developer reserves the right to make changes to these plans prior to exchange of contracts. For exact plot specification, details of external and internal finishes, dimensions and floorplan differences, please speak to a member of our Sales Team for more details.



# 03

## BEDROOM APARTMENTS

DESIGNED TO  
GIVE YOU THE  
FREEDOM TO FLOW

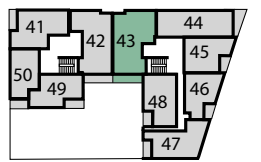
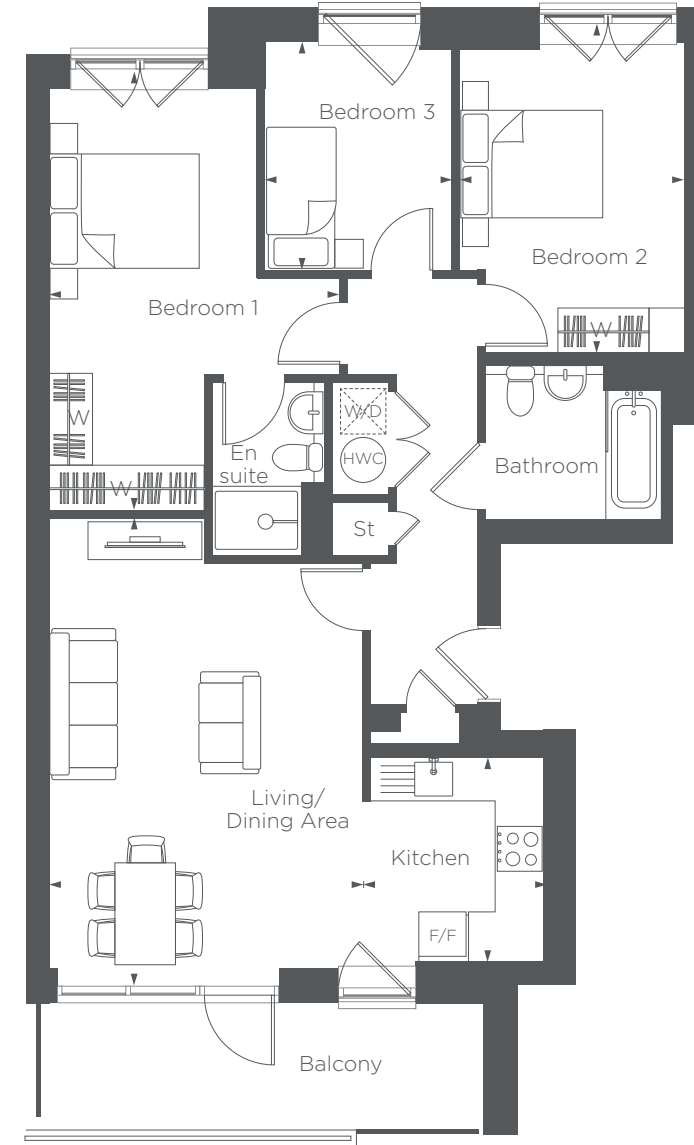
THROUGHOUT



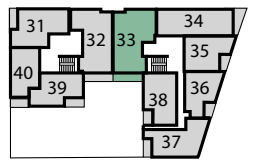
HACKNEY | E3

# BLOCK B

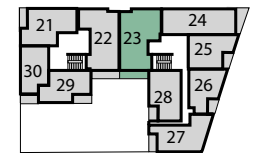
PLOTS 3,  
13, 23, 33  
& 43



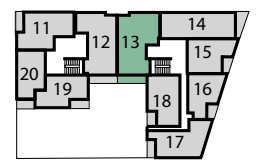
Fourth floor



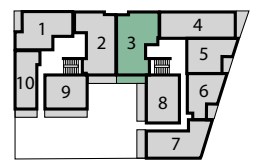
Third floor



Second floor



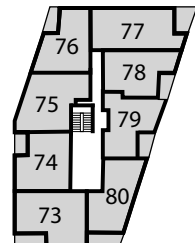
First floor



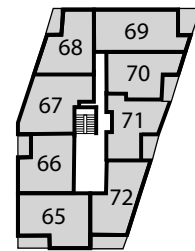
Ground floor

<b>Kitchen</b>	2.76M x 2.40M	9'0" x 7'8"
<b>Living/Dining Area</b>	5.41M x 4.13M	17'7" x 13'5"
<b>Bedroom 1</b>	4.03M x 3.85m	13'2" x 12'6"
<b>Bedroom 2</b>	4.35M x 2.97M	14'2" x 9'7"
<b>Bedroom 3</b>	3.01M x 2.47M	9'8" x 8'1"
<b>Balcony</b>	5.86M x 1.87M	19'2" x 6'1"

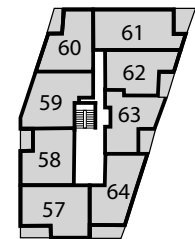
F/F – Fridge/Freezer HWC – Hot Water Cylinder St – Store W/D – Washer Dryer W – Wardrobe  
Floorplans shown are indicative only. The kitchen layout and furniture positions are for indicative purposes only. All dimensions indicated are approximate and should not be relied upon for carpet sizes or items of furniture. The developer reserves the right to make changes to these plans prior to exchange of contracts. For exact plot specification, details of external and internal finishes, dimensions and floorplan differences, please speak to a member of our Sales Team for more details.



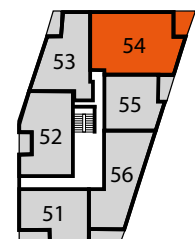
Fourth floor



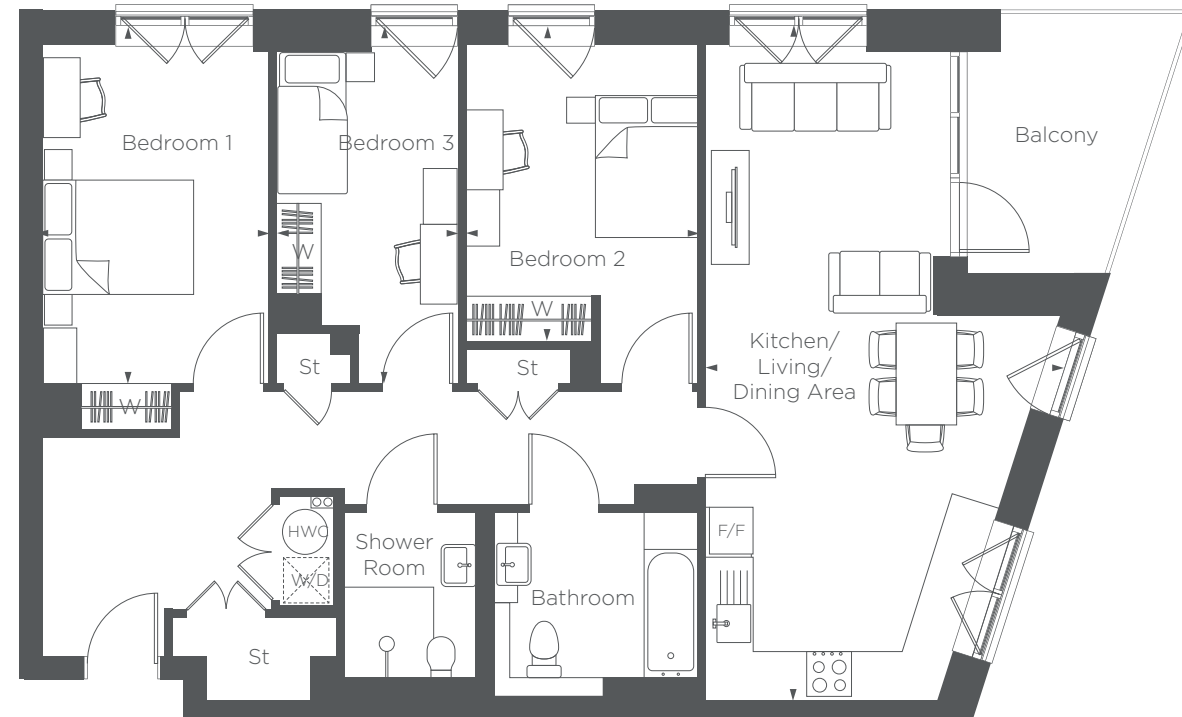
Third floor



Second floor



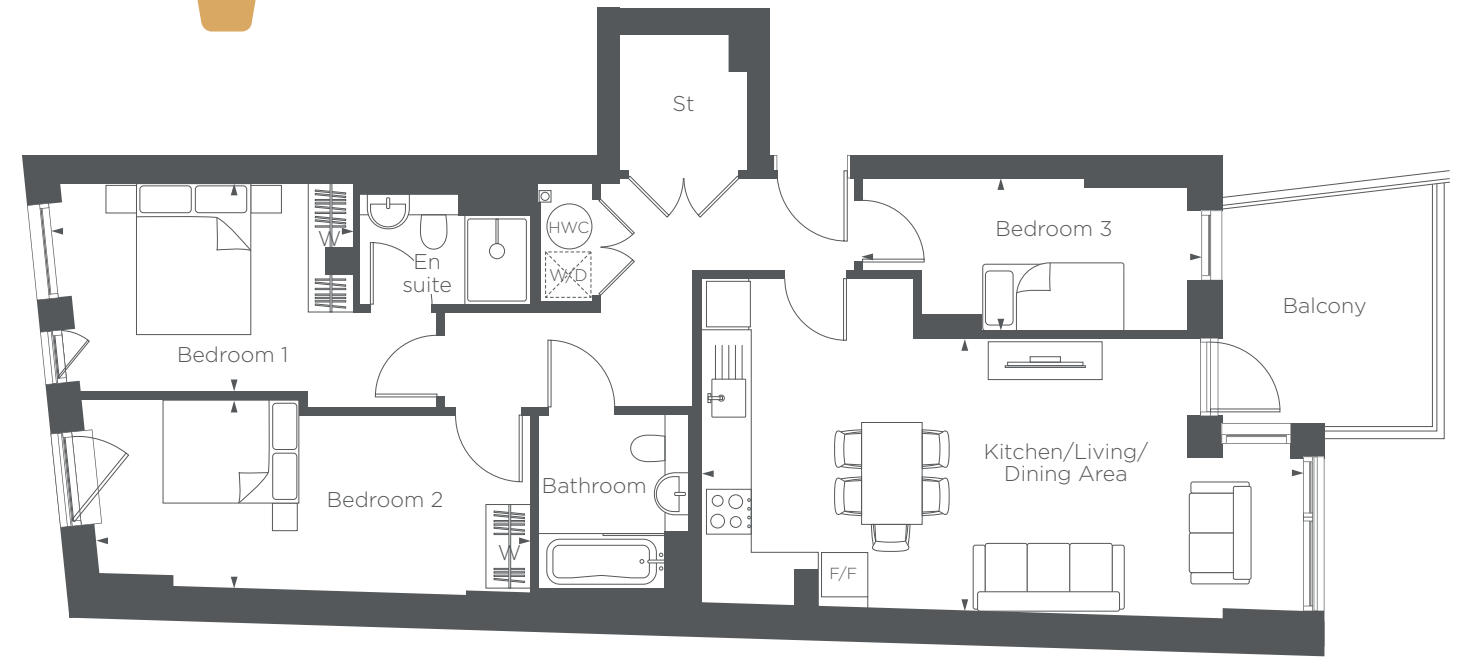
First floor



<b>Kitchen/Living/Dining Area</b>	8.93M × 3.23M	29'2" × 10'5"
<b>Bedroom 1</b>	4.74M × 3.00M	15'5" × 9'8"
<b>Bedroom 2</b>	4.17M × 3.07M	13'6" × 10'0"
<b>Bedroom 3</b>	4.74M × 2.40M	15'5" × 7'8"
<b>Balcony</b>	3.42M × 2.31M	11'2" × 7'5"

# BLOCK C

## PLOT 54



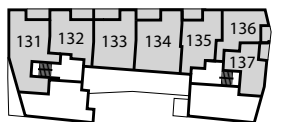
<b>Kitchen/Living/Dining Area</b>	7.97M × 3.61M	26'1" × 11'8"
<b>Bedroom 1</b>	3.88M × 2.75M	12'7" × 9'0"
<b>Bedroom 2</b>	5.74M × 2.50M	18'8" × 8'2"
<b>Bedroom 3</b>	4.31M × 2.02M	14'1" × 6'6"
<b>Balcony</b>	3.05M × 2.79M	10'0" × 9'1"

# BLOCK E

## PLOT 111



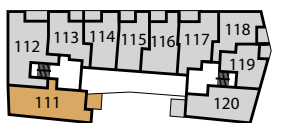
Fourth floor



Third floor



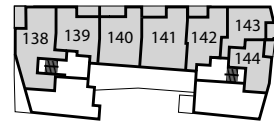
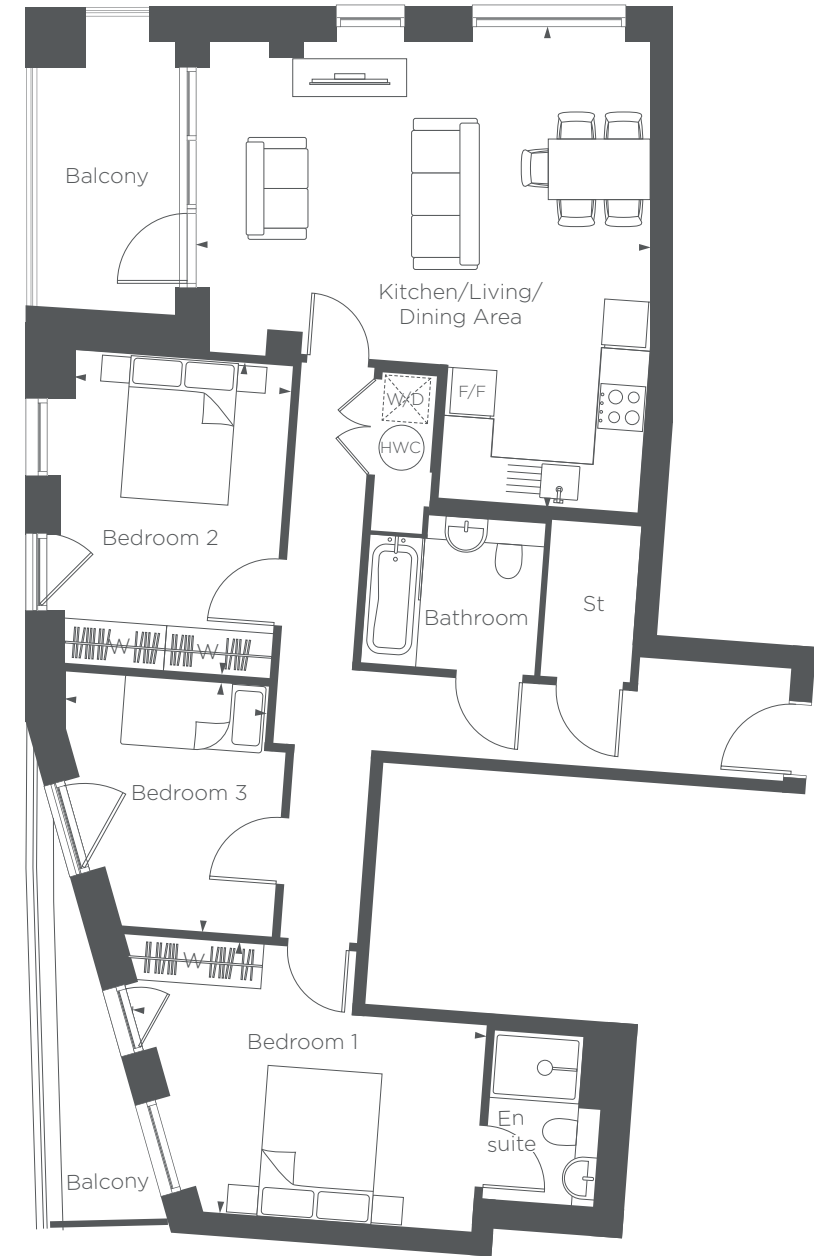
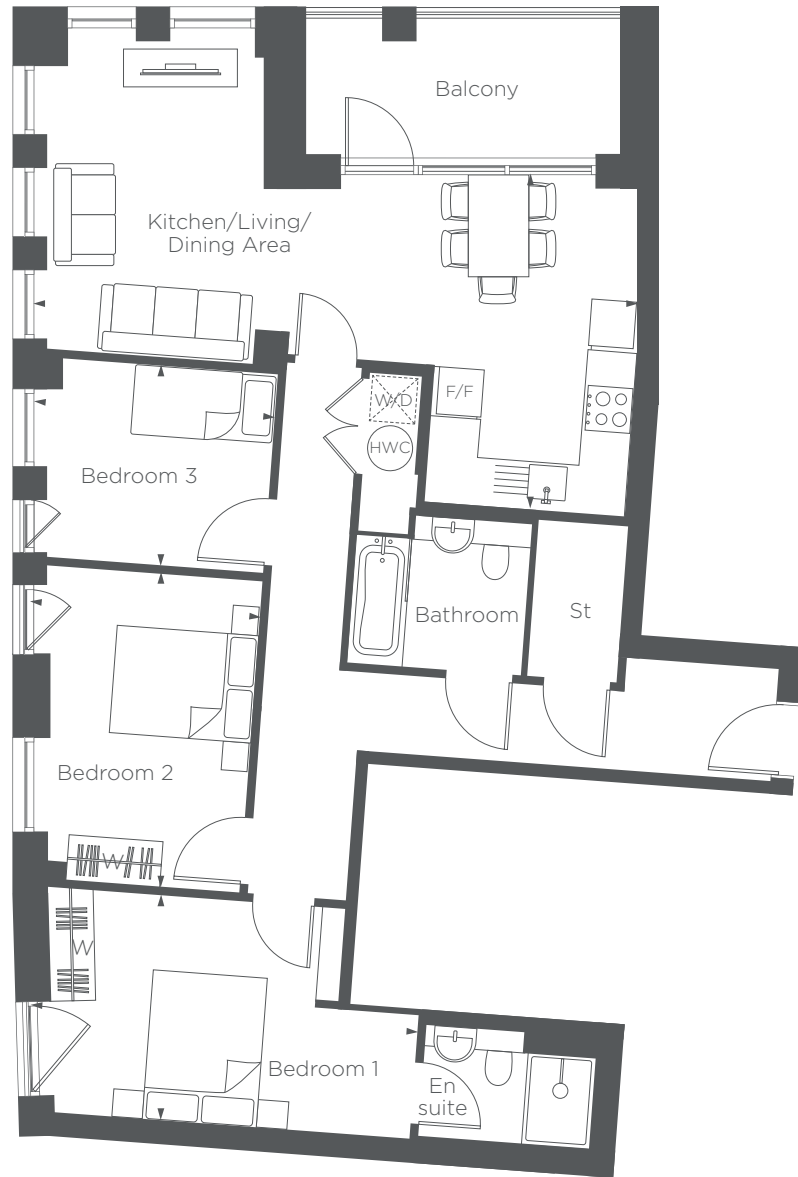
Second floor



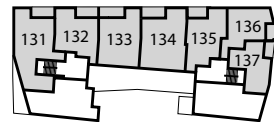
First floor

F/F – Fridge/Freezer HWC – Hot Water Cylinder St – Store W/D – Washer Dryer W – Wardrobe  
 Floorplans shown are indicative only. The kitchen layout and furniture positions are for indicative purposes only. All dimensions indicated are approximate and should not be relied upon for carpet sizes or items of furniture. The developer reserves the right to make changes to these plans prior to exchange of contracts. For exact plot specification, details of external and internal finishes, dimensions and floorplan differences, please speak to a member of our Sales Team for more details.





Fourth floor



Third floor



Second floor



First floor

<b>Kitchen/Living/Dining Area</b>	8.00M × 4.18M	26'2" × 13'7"
<b>Bedroom 1</b>	4.88M × 3.00M	16'0" × 9'8"
<b>Bedroom 2</b>	4.15M × 3.00M	13'6" × 9'8"
<b>Bedroom 3</b>	2.82M × 2.65M	9'2" × 8'6"
<b>Balcony</b>	4.17M × 1.95M	13'6" × 6'3"

# BLOCK E

## PLOT 112

# BLOCK E

## PLOT 138



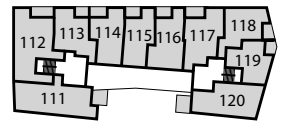
Fourth floor



Third floor



Second floor



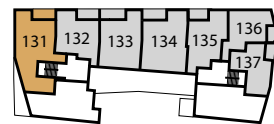
First floor

<b>Kitchen/Living/Dining Area</b>	6.37M × 5.83M	20'8" × 19'1"
<b>Bedroom 1</b>	3.58M × 2.75M	11'7" × 9'0"
<b>Bedroom 2</b>	4.15M × 3.08M	13'6" × 10'1"
<b>Bedroom 3</b>	3.30M × 2.67M	10'8" × 8'7"
<b>Balcony</b>	3.95M × 1.95M	12'9" × 6'3"

F/F – Fridge/Freezer HWC – Hot Water Cylinder St – Store W/D – Washer Dryer W – Wardrobe  
 Floorplans shown are indicative only. The kitchen layout and furniture positions are for indicative purposes only. All dimensions indicated are approximate and should not be relied upon for carpet sizes or items of furniture. The developer reserves the right to make changes to these plans prior to exchange of contracts. For exact plot specification, details of external and internal finishes, dimensions and floorplan differences, please speak to a member of our Sales Team for more details.



Fourth floor



Third floor



Second floor

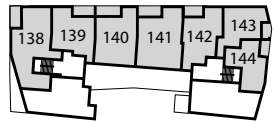
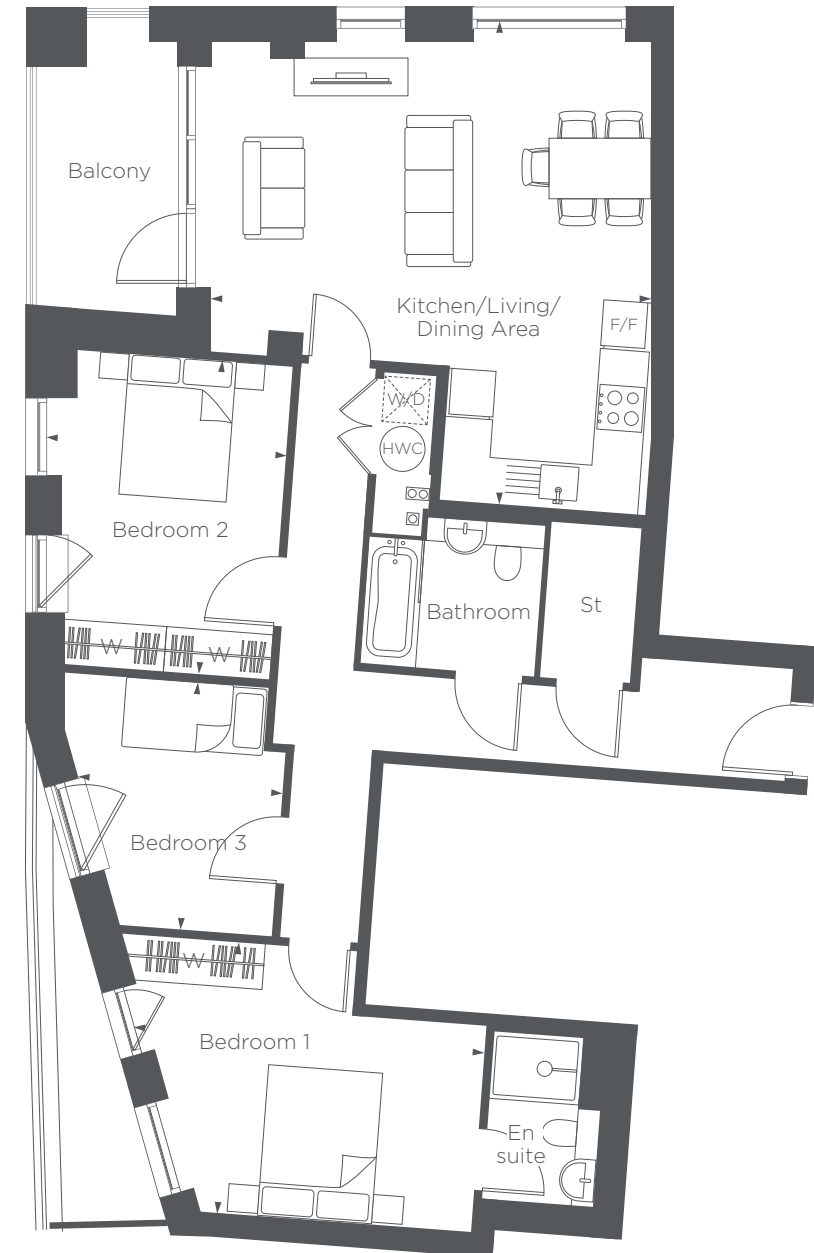


First floor

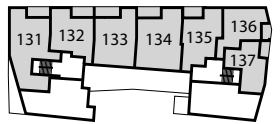
<b>Kitchen/Living/Dining Area</b>	8.00M × 4.25M	26'2" × 13'9"
<b>Bedroom 1</b>	4.65M × 3.60M	15'2" × 11'8"
<b>Bedroom 2</b>	4.15M × 3.22M	13'6" × 10'1"
<b>Bedroom 3</b>	3.30M × 2.67M	10'8" × 8'7"
<b>Balcony</b>	4.17M × 1.95M	13'6" × 6'3"

# BLOCK E

## PLOT 131



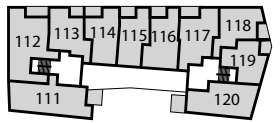
Fourth floor



Third floor



Second floor



First floor

<b>Kitchen/Living/Dining Area</b>	6.37M × 6.03M	20'11" × 19'9"
<b>Bedroom 1</b>	4.63M × 3.60M	15'1" × 11'8"
<b>Bedroom 2</b>	4.15M × 2.94M	13'6" × 9'6"
<b>Bedroom 3</b>	3.30M × 2.64M	10'8" × 8'6"
<b>Balcony</b>	3.88M × 1.98M	12'7" × 6'4"

# BLOCK E

## PLOT 122

F/F – Fridge/Freezer HWC – Hot Water Cylinder St – Store W/D – Washer Dryer W – Wardrobe  
 Floorplans shown are indicative only. The kitchen layout and furniture positions are for indicative purposes only. All dimensions indicated are approximate and should not be relied upon for carpet sizes or items of furniture. The developer reserves the right to make changes to these plans prior to exchange of contracts. For exact plot specification, details of external and internal finishes, dimensions and floorplan differences, please speak to a member of our Sales Team for more details.

F/F – Fridge/Freezer HWC – Hot Water Cylinder St – Store W/D – Washer Dryer W – Wardrobe  
 Floorplans shown are indicative only. The kitchen layout and furniture positions are for indicative purposes only. All dimensions indicated are approximate and should not be relied upon for carpet sizes or items of furniture. The developer reserves the right to make changes to these plans prior to exchange of contracts. For exact plot specification, details of external and internal finishes, dimensions and floorplan differences, please speak to a member of our Sales Team for more details.



V V





# DREAMING TO OWNING

SHARED OWNERSHIP  
HOW IT COULD WORK FOR YOU...

HACKNEY | E3

**Shared Ownership is a Government-backed initiative to help you get on the property ladder with a smaller deposit.**

### How does it work?

You initially purchase between 25% to 75% of the home's market value. You then pay subsidised rent on the remainder.

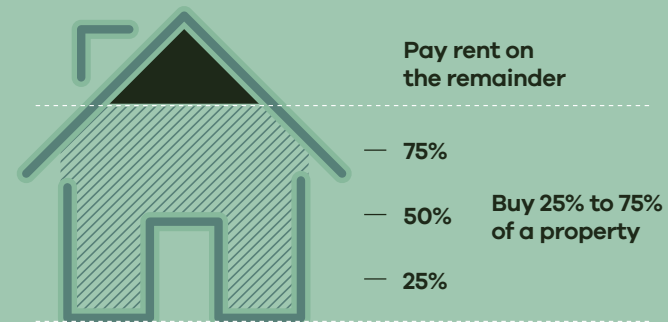
### Am I eligible?

To be considered eligible for the Shared Ownership initiative your yearly income must be below £90,000 within London, or £80,000 outside of London. If you already own a home, you must be in the process of selling it.

### Will I need to pay a deposit?

In most cases, you will need 5 to 10% of the share percentage you are purchasing.

A recommended mortgage advisor will be able to advise you on the best options available to you, so please contact us for further advice. If the property's market value is £300,000 and you're buying 25%, then your proportion will be £75,000. This means you'll need a deposit of £3,750 alongside a mortgage of £71,250. You can also own the property outright by increasing your share to 100%.



Shared Ownership – Terms and conditions apply. This initiative is subject to status and fitting criteria. Minimum and maximum share values will apply and rent is payable on the unsold share. Please speak to a member of our Sales Team for more details.

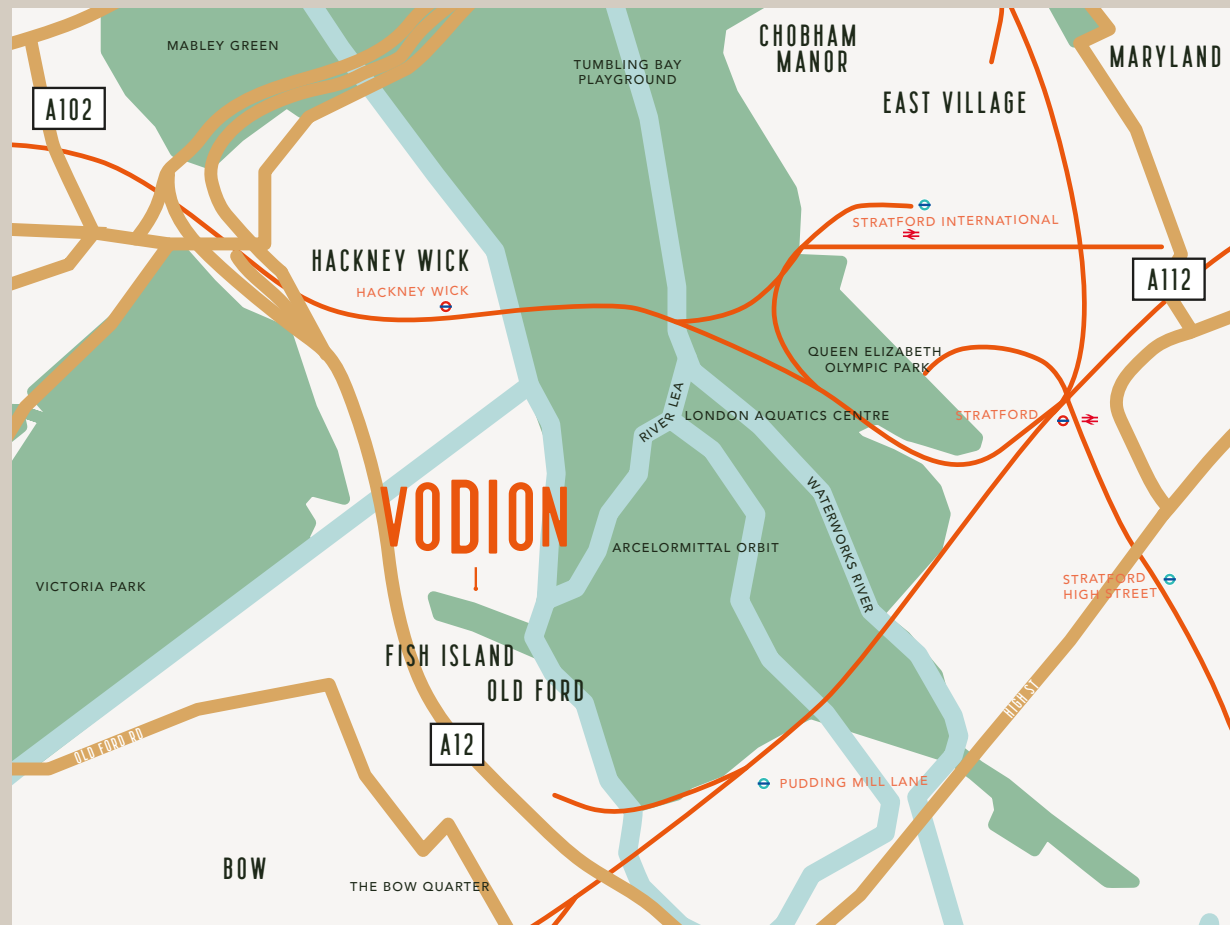




# VISIT US

0300 555 2171

Dace Road, Hackney, E3



## DIRECTIONS

### By train from Stratford station:

- Take the overground to Hackney Wick
- Walk south on White Post Lane towards Rothbury Road
- From Bow Road station, walk east on Bow Road/A11
- Turn left to stay on White Post Lane
- Turn right towards Capital Ring
- Turn left onto Capital Ring
- Turn right onto Dace Road

### By car from A12:

- Merge onto N Circular Road/A406
- Use the left two lanes to take the A12 slip road to central London
- At Redbridge roundabout, take the 5<sup>th</sup> exit onto Eastern Avenue/A12
- Take the Old Ford exit towards B142
- Turn left onto Wick Lane
- At the roundabout, take the 2<sup>nd</sup> exit and stay on Wick Lane
- Turn right onto Monier Road
- At the roundabout, take the 3<sup>rd</sup> exit onto Dace Road





# VODION

HACKNEY | E3

[shosales.co.uk/vodion](https://shosales.co.uk/vodion)

Southern  
Home  
Ownership



  
SITESALES  
PROPERTY GROUP