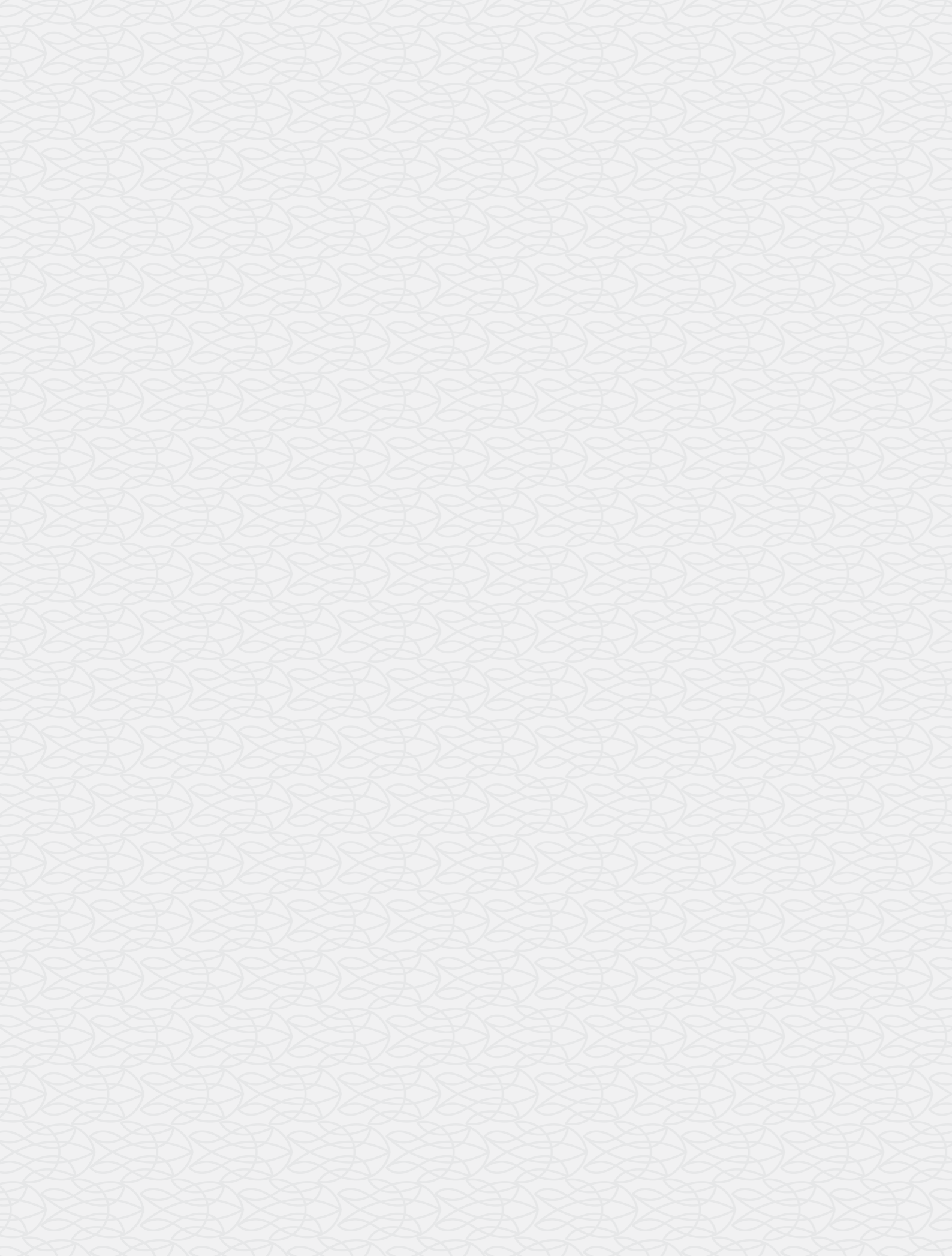
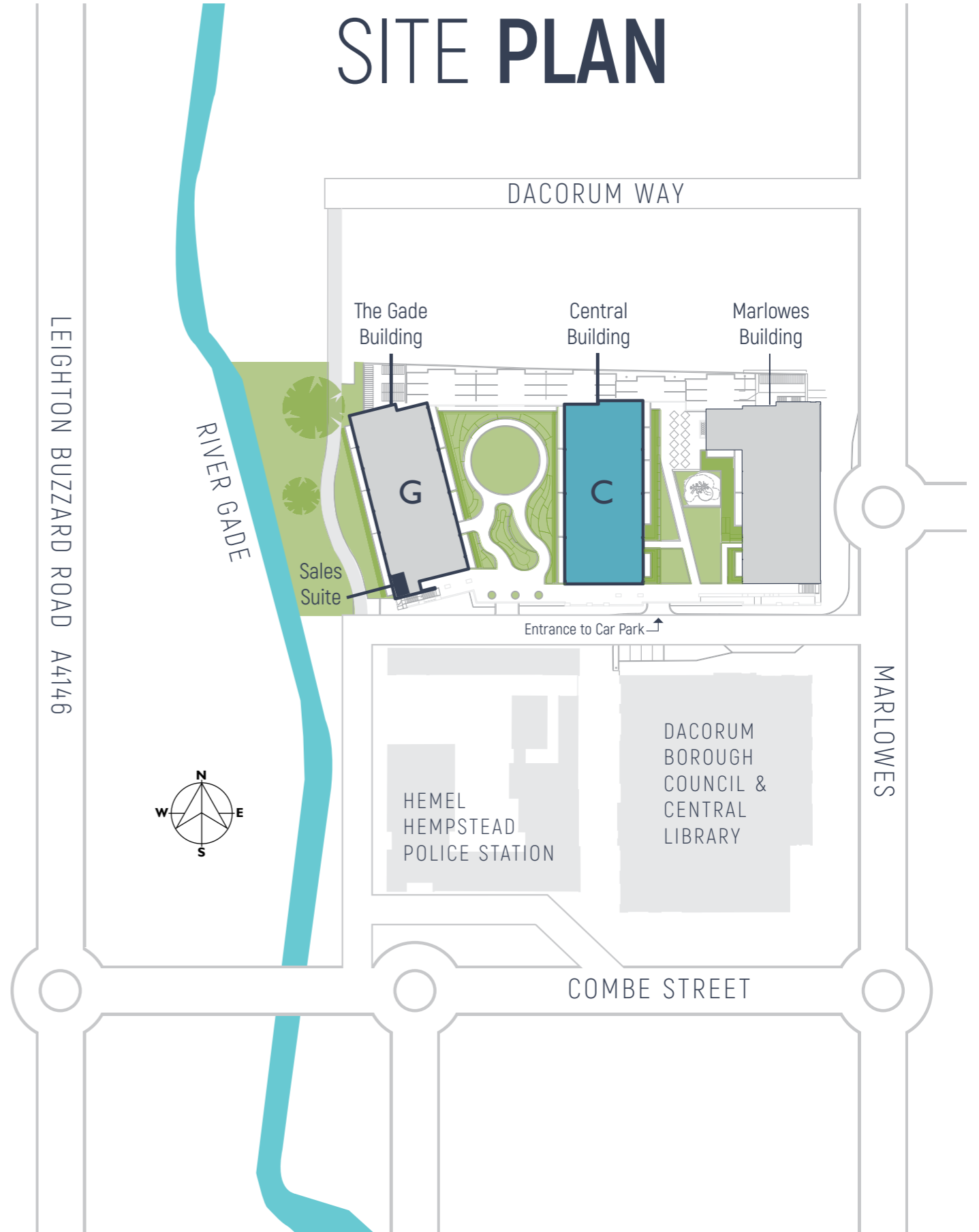


CENTRAL
APARTMENTS
FLOOR PLANS



THE
GADE
HEMEL HEMPSTEAD

SITE PLAN

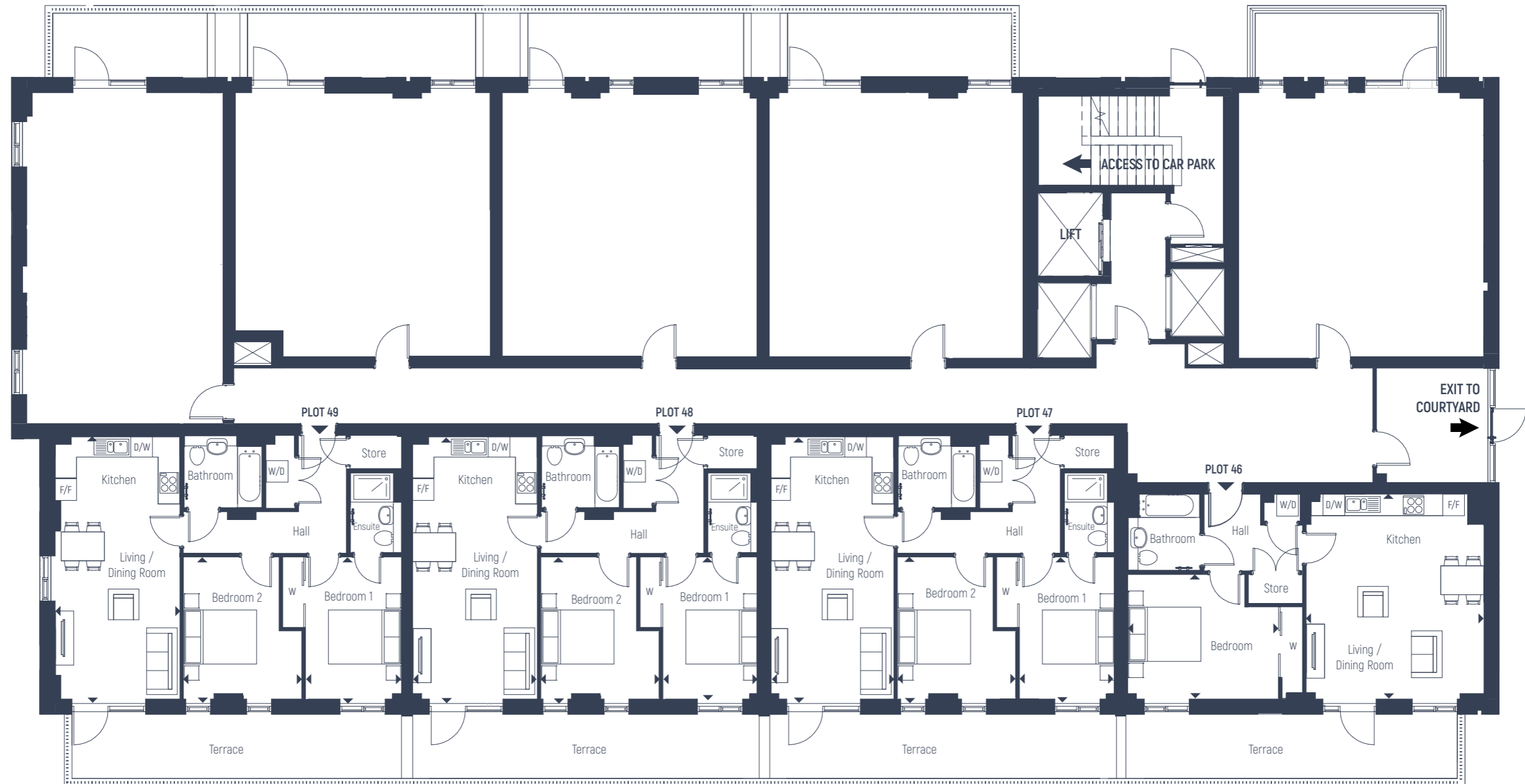




CENTRAL BUILDING

GROUND FLOOR

- KEY**
- 2 Bedroom Apartments
 - 1 Bedroom Apartments
 - F/F - Fridge / Freezer
 - D/W - Dish Washer
 - W/D - Washer / Dryer
 - W - Wardrobe



GROUND FLOOR

Plot 49

- Living / Dining / Kitchen
7.32m X 3.50m 24' 0" X 11' 6"
- Bedroom 1
3.99m X 2.60m 13' 1" X 8' 6"
- Bedroom 2
3.99m X 3.34m 13' 1" X 10' 11"

Plot 48

- Living / Dining / Kitchen
7.32m X 3.50m 24' 0" X 11' 6"
- Bedroom 1
3.99m X 2.60m 13' 1" X 8' 6"
- Bedroom 2
3.99m X 3.34m 13' 1" X 10' 11"

Plot 47

- Living / Dining / Kitchen
7.32m X 3.50m 24' 0" X 11' 6"
- Bedroom 1
3.99m X 2.60m 13' 1" X 8' 6"
- Bedroom 2
3.99m X 3.34m 13' 1" X 10' 11"

Plot 46

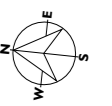
- Living / Dining / Kitchen
5.66m X 4.93m 18' 7" X 16' 2"
- Bedroom
4.17m X 3.43m 13' 8" X 11' 3"

CENTRAL BUILDING

1ST FLOOR

Plot 54

Living / Dining / Kitchen
742m X 3.64m 24' 4" X 12' 0"
Bedroom 1
4.09m X 3.31m 13' 5" X 10' 10"
Bedroom 2
4.09m X 2.79m 13' 5" X 9' 2"



KEY
■ 2 Bedroom Apartments
■ 1 Bedroom Apartments
 F/F - Fridge / Freezer
 D/W - Dish Washer
 W/D - Washer / Dryer
 W - Wardrobe



Plot 59

Living / Dining / Kitchen
7.32m X 3.50m 24' 0" X 11' 6"
Bedroom 1
3.99m X 2.60m 13' 1" X 8' 6"
Bedroom 2
3.99m X 3.34m 13' 1" X 10' 11"

Plot 58

Living / Dining / Kitchen
7.32m X 3.50m 24' 0" X 11' 6"
Bedroom 1
3.99m X 2.60m 13' 1" X 8' 6"
Bedroom 2
3.99m X 3.34m 13' 1" X 10' 11"

Plot 57

Living / Dining / Kitchen
7.32m X 3.50m 24' 0" X 11' 6"
Bedroom 1
3.99m X 2.60m 13' 1" X 8' 6"
Bedroom 2
3.99m X 3.34m 13' 1" X 10' 11"

Plot 56

Living / Dining / Kitchen
7.32m X 3.74m 24' 0" X 12' 3"
Bedroom
3.26m X 3.22m 10' 8" X 10' 7"

Plot 55

Living / Dining / Kitchen
5.65m X 4.00m 18' 7" X 13' 1"
Bedroom 1
3.77m X 3.42m 12' 4" X 11' 3"
Bedroom 2
3.36m X 3.32m 11' 0" X 10' 11"

FIRST FLOOR

2ND TO 5TH FLOORS
CENTRAL BUILDING

Plots 70, 80, 90, 100

Living / Dining / Kitchen
5.40m X 3.66m 17' 8" X 12' 0"
Bedroom
3.49m X 3.27m 11' 5" X 10' 9"

Plots 71, 81, 91, 101

Living / Dining / Kitchen
6.59m X 3.74m 21' 7" X 12' 3"
Bedroom
3.93m X 3.22m 12' 11" X 10' 7"

Plots 72, 82, 92, 102

Living / Dining / Kitchen
7.32m X 3.74m 24' 0" X 12' 3"
Bedroom
3.26m X 3.22m 10' 8" X 10' 7"

Plots 73, 83, 93, 103

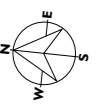
Living / Dining / Kitchen
7.32m X 3.74m 24' 0" X 12' 3"
Bedroom
3.26m X 3.22m 10' 8" X 10' 7"

Plots 64, 74, 84, 94

Living / Dining / Kitchen
7.32m X 3.60m 24' 0" X 11' 10"
Bedroom 1
4.04m X 3.26m 13' 3" X 10' 8"
Bedroom 2
4.04m X 2.68m 13' 3" X 8' 9"

KEY

- 2 Bedroom Apartments
- 1 Bedroom Apartments
- F/F - Fridge / Freezer
- D/W - Dish Washer
- W/D - Washer / Dryer
- W - Wardrobe



FIFTH FLOOR



FOURTH FLOOR



THIRD FLOOR



SECOND FLOOR

Plots 69, 79, 89, 99

Living / Dining / Kitchen
7.32m X 3.50m 24' 0" X 11' 6"
Bedroom 1
3.99m X 2.60m 13' 1" X 8' 6"
Bedroom 2
3.99m X 3.34m 13' 1" X 10' 11"

Plots 68, 78, 88, 98

Living / Dining / Kitchen
7.32m X 3.50m 24' 0" X 11' 6"
Bedroom 1
3.99m X 2.60m 13' 1" X 8' 6"
Bedroom 2
3.99m X 3.34m 13' 1" X 10' 11"

Plots 67, 77, 87, 97

Living / Dining / Kitchen
7.32m X 3.50m 24' 0" X 11' 6"
Bedroom 1
3.99m X 2.60m 13' 1" X 8' 6"
Bedroom 2
3.99m X 3.34m 13' 1" X 10' 11"

Plots 66, 76, 86, 96

Living / Dining / Kitchen
7.32m X 3.74m 24' 0" X 12' 3"
Bedroom
3.26m X 3.22m 10' 8" X 10' 7"

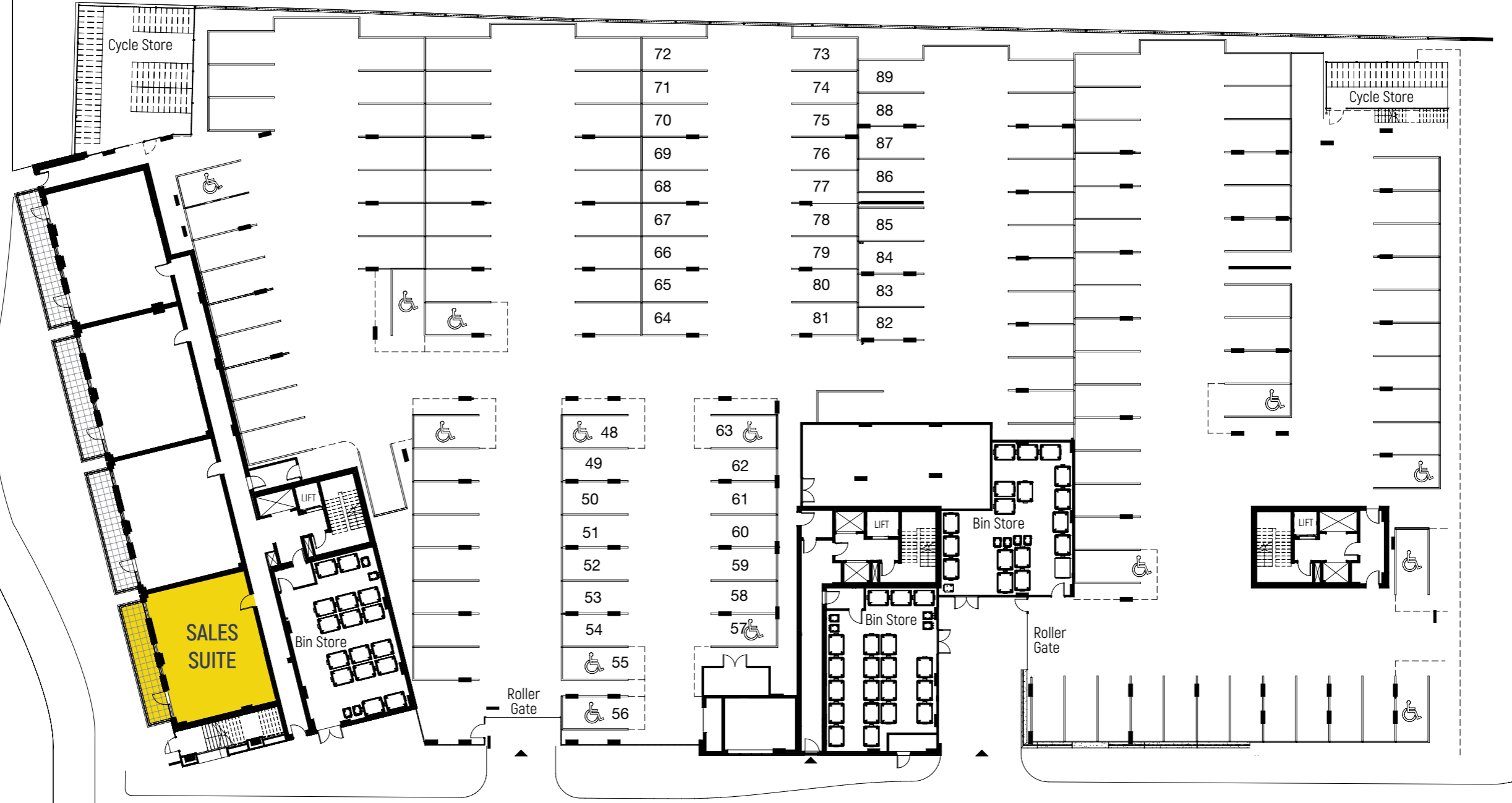
Plots 65, 75, 85, 95

Living / Dining / Kitchen
5.65m X 4.00m 18' 7" X 13' 1"
Bedroom 1
3.77m X 3.42m 12' 4" X 11' 3"
Bedroom 2
3.36m X 3.32m 11' 0" X 10' 11"

LOWER GROUND FLOOR
CENTRAL BUILDING
CAR PARKING PLAN



MARLOWES



DACORUM WAY



Please contact our
sales team on:

01442 979 599

www.the-gade.co.uk