





## NEW BEGINNINGS START HERE

---

- 4-9 HANGAR 16
- 10-11 ARCHITECTURE TO INSPIRE
- 12-13 ON THE MENU
- 14-17 WHAT'S ON
- 18-20 CITY CENTRE ROUTES
- 21 TRAVEL TIMES
- 22-23 MAP OF THE AREA
- 24-25 FLOOR PLAN LEVELS AND SITE PLAN
- 26-29 SPECIFICATION
- 30-31 ABOUT BE WEST

---

Computer generated image is indicative only.

## HANGAR 16

Prepare for the ultimate urban living from BE WEST at Hangar 16

BE WEST are bringing a touch of modern minimalism and glamour back to Acton, with new homes at Hangar 16. Embrace a part of local history at this impressive 1930s warehouse conversion, with the unique opportunity to be a part of The Vale's future. Have your choice of one or two bedroom apartments, many featuring a terrace or balcony and a high specification throughout - a nod to the opulence of the Art Deco era whilst offering all modern fixtures and fittings suitable for homes of this calibre.





Discover why Hangar 16 is the place to be in W3, with the best of West London at your fingertips. From neighbouring Shepherd's Bush and Chiswick, you're within reach of riverside runs, park picnics, morning commutes and of course the buzz and energy of London's hottest bars and restaurants.





## ARCHITECTURE TO INSPIRE

Minimalism is paired with opulence and glamour in this 1930's conversion

The clean lines and simple design of this Art Deco-style building hint at its past utilitarian life as an industrial warehouse, which served as a storage and distribution centre for Brown Brothers Engineering, manufacturer of aircraft parts. Built in 1934, the building is being brought back to life to enhance the surrounding urban landscape and bring new homes and businesses to Acton.





The specification of the properties is correct at the date of print but may change as building works progress. Any computer generated image are indicative of the anticipated quality and style of the specification and may not represent the actual furnishings and fittings of the properties. Unless specifically incorporated in writing into the sales contract the specification is not intended to form part of any offer, contract, warranty or representation and should not be relied upon as a statement or representation of fact.

# ON THE MENU

Discover local favourites before venturing  
across West London's hotspots



 The Askew Pub & Kitchen, 269 Uxbridge Road  
0.1 miles | 2 minutes by foot

 Proud Mary's, 1C Oaklands Grove  
0.4 miles | 9 minutes by foot

## The Askew Pub & Kitchen

Invite friends round and pop across the road to your new local, complete with a sheltered beer garden. The Askew Pub & Kitchen has constantly changing seasonal menus, great service, a top rated atmosphere and of course an extensive selection of wines, craft & premium beers.

## Proud Mary's

Locals love this spot for lazy Sundays and the promise of being revived with beautiful brunch dishes, smooth coffee and friendly service. Think blueberry pancakes, Turkish eggs, halloumi breakfast bagels and cold pressed juice, served all day with alfresco dining for when the sun is shining.

## Giulia

Elegant takes on classic Italian cuisine can be found at this Askew Road restaurant where it'll be hard to leave once you've sampled a few bites with your aperitivo. Stay for a romantic dinner paired with Italian wines, and you'll only be a short stroll from home at the end of the night.



 Giulia, 77 Askew Road  
0.2 miles | 5 minutes by foot



## Happy Sky Japanese Bakery

Switch up your daily coffee and croissant for a Japanese sweet pastry. Highly skilled bakers produce Japanese breads and pastries without adding any unnecessary preservatives to create unique and delicious bakes. Don't forget to take home an award-winning Tokyo Milk Loaf.

 Happy Sky, Japanese Bakery  
0.3 miles | 6 minutes by foot

# WHAT'S ON

With so much to experience from Hangar 16, here's our top things to see and do

Explore the beautiful riverside of Kew and Richmond, walk or cycle along the Thames. There are several rowing clubs along this stretch of the river, or relax at one of the riverside pubs.







### Westfield London


Picking up the perfect gift or browsing the latest styles? Westfield London is your go-to for high street, designer and luxury shopping like Burberry, Prada and Gucci. Stop for lunch, or make the most of the Vue cinema, All Star Lanes and Puttshack on a rainy day.

 Westfield London  
1 mile | 10 minutes by bus

### Ravenscourt Park

This small but beautiful park features wildlife habitats, a lake, children’s parks, tennis courts, basketball courts and a garden centre. Be sure to finish off at the popular tea-house or stop by the neighbouring pub, The Oak W12, where wood fired pizzas and tapas is the speciality.




 Ravenscourt Park, Goldhawk Road  
0.6 miles | 13 minutes by foot

### Gunnersbury Park

Local spots can be reached by foot, cycle or bus, but stations in Acton and Shepherd’s Bush will get you just about anywhere across the capital. Meet friends, go for a run, enjoy a Sunday afternoon stroll, try boating on the lake or wander around the museum. Opened in 1929 it’s a showcase for local history and archaeology, costume and fine art. There’s plenty to see and do at Gunnersbury Park.

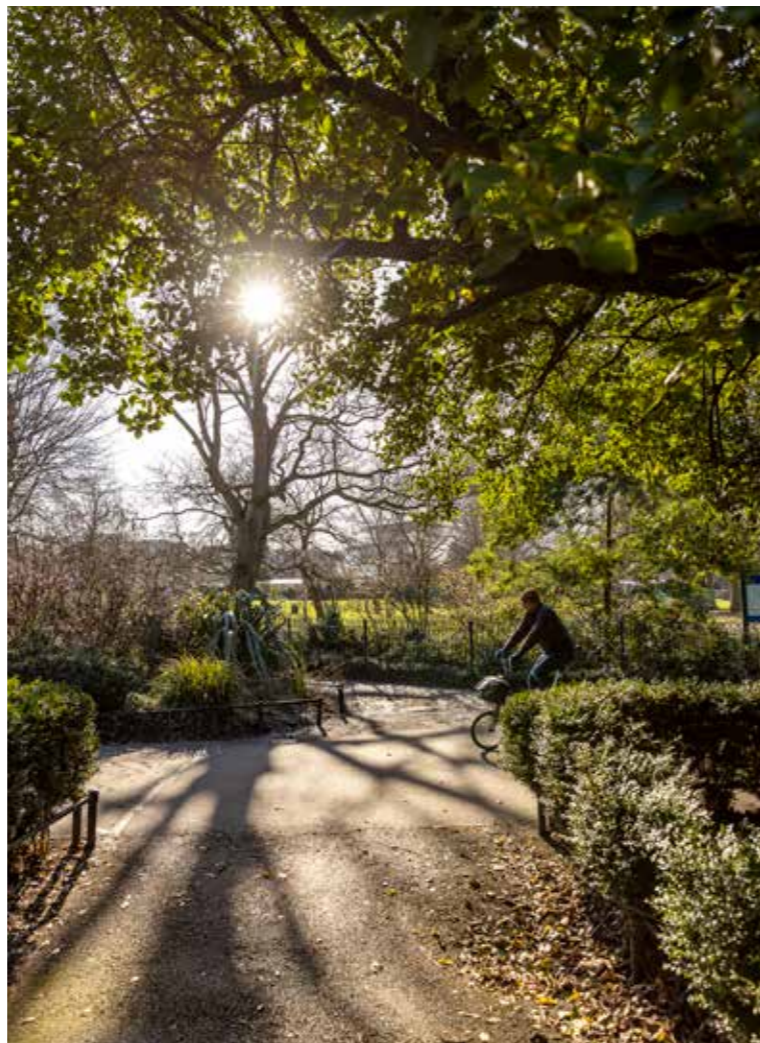


 Gunnersbury Park  
2.3 miles | 17 minutes by bike

### Chiswick House & Gardens

Visit Chiswick for a fascinating day out to see the Roman-style Palladian villa inspired by Italian architecture, collection of Old Masters paintings, conservatory and 19th-century Italian Garden. Maybe you’ll even start planning your next trip whilst sipping an aperitif at one of Chiswick’s many Italian restaurants.

 Chiswick House and Gardens  
2.2 miles | 11 minutes by bike



### Next Door Records

Record shop, bar and event space, Next Door Records hosts DJ sets, live gigs, supper clubs, panel discussions, art installations and more each week surrounded by a mix of new and vintage vinyl. Check their listings before popping along for a coffee or cocktail to make the most of this new local spot.

 Next Door Records  
304 Uxbridge Road  
0.6 miles | 13 minutes by foot





# CITY CENTRE ROUTES

Be well connected from a vast selection of stations, TFL lines and bus routes from right outside Hangar 16

Local spots can be reached by foot, cycle or bus, but stations in Acton and Shepherd's Bush will get you just about anywhere across the capital.



Oxford Circus  
5.7 miles | 11 minutes from Shepherd's Bush Station



For business trips and holidays, Heathrow airport is accessed via Acton Main Line or via Hammersmith on the Piccadilly line, but if you're eager to start your trip then Heathrow is only a 26 minute taxi ride away.

Take to two wheels to get to your destination from Hangar 16. All routes start from The Vale, with Shepherd's Bush a five minute cycle, both Chiswick High Road and Acton Central just a 9 minute cycle and Hammersmith a 16 minute cycle. Kew Gardens, Richmond, Notting Hill and Hyde Park are just a few of the top spots within a 30 minute cycle from Hangar 16.



Travel times approximate only. Source: Google Maps.

# WALKING DISTANCE TO ZONE 2 TRANSPORT LINKS



SHEPHERD'S BUSH

25 minutes by foot or 14 to 20 minutes by bus from Hangar 16

- NOTTING HILL GATE  
3 mins
- HAMMERSMITH  
4 mins
- LADBROKE GROVE  
4 mins
- BOND STREET  
10 mins
- OXFORD CIRCUS  
11 mins
- PADDINGTON  
14 mins
- CLAPHAM JUNCTION  
17 mins
- KINGS CROSS ST PANCRAS  
20 mins
- CHANCERY LANE  
22 mins
- LIVERPOOL STREET  
25 mins
- FARRINGDON  
25 mins
- BANK  
26 mins
- STRATFORD  
32 mins



ACTON CENTRAL

16 minutes by foot from Hangar 16

- GUNNERSBURY (FOR CHISWICK)  
6 mins
- KEW GARDENS  
9 mins
- RICHMOND  
17 mins
- WEMBLEY CENTRAL  
22 mins
- HAMPSTEAD HEATH  
27 mins
- CAMDEN ROAD  
29 mins
- DALSTON KINGSLAND  
38 mins
- STRATFORD  
53 mins



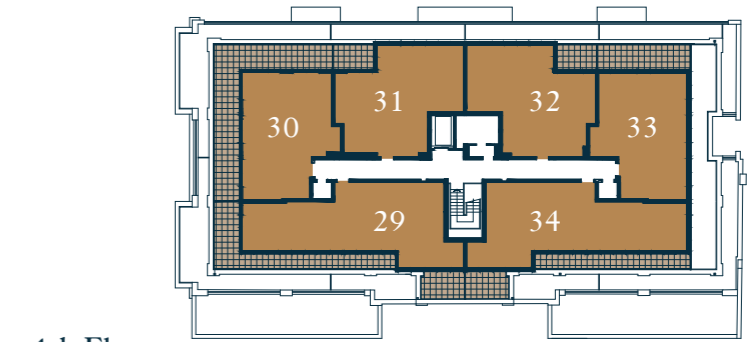
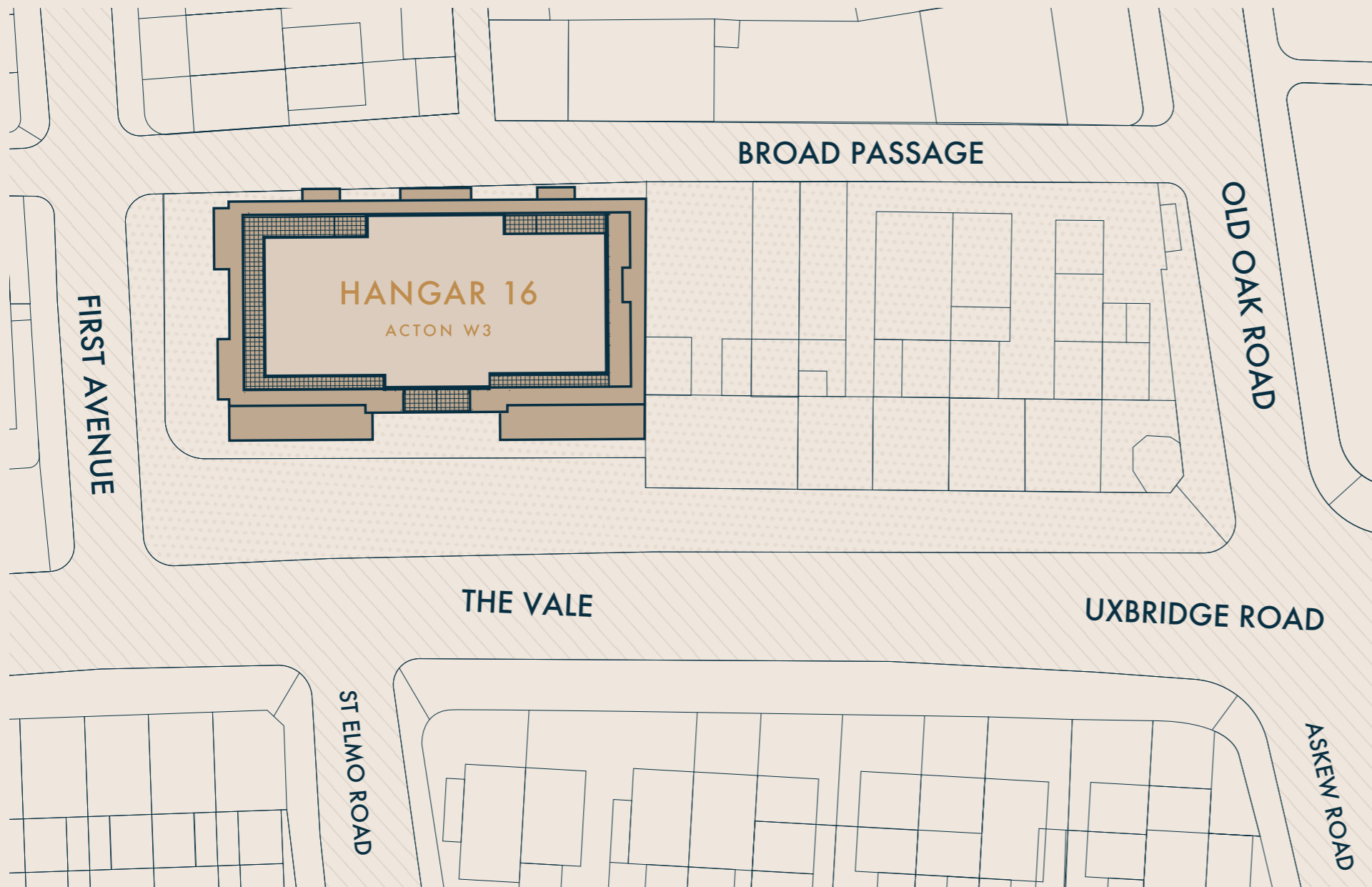
# GET TO KNOW THE AREA



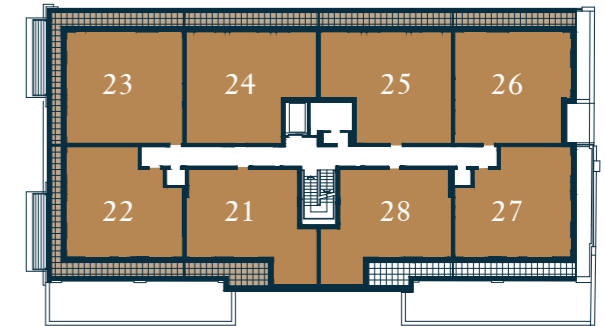
- 1. Westfield London
- 2. The Askew Pub & Kitchen
- 3. Proud Mary's
- 4. Happy Sky Japanese Bakery
- 5. Guilia Restaurant
- 6. Tesco Superstore
- 7. David Lloyd Acton Park
- 8. Maples Nursery School & Children's Centre
- 9. Next Door Records
- 10. Chiswick House and Gardens

# FLOOR PLAN LEVELS AND SITE PLAN

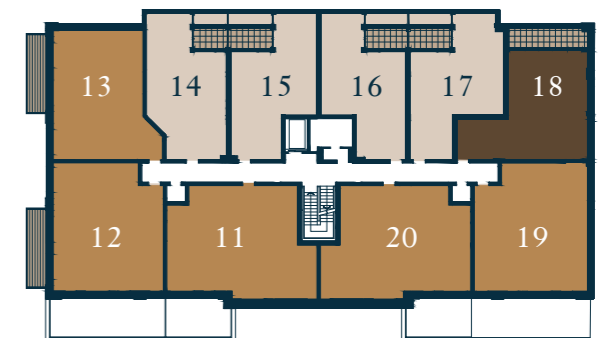
Hangar 16 is an Art-Deco style warehouse conversion, situated at The Vale, comprising of five floors where the ground floor will accommodate new retail and commercial opportunities whilst the first to fifth floors will accommodate 26 one and two bedroom apartments for sale.



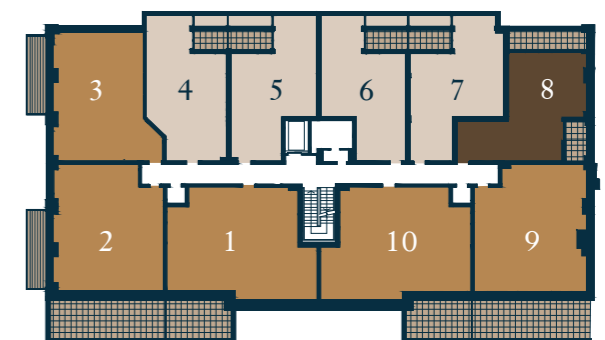
4th Floor



3rd Floor



2nd Floor



1st Floor

- One bedroom apartment
- Two bedroom apartment
- Shared Ownership

## UNIVERSAL DESIGN FOR MODERN LIVING

Our brand new homes come with integrated appliances as standard, presented in a neutral tone, to give you the opportunity to tweak to your own desire

### KITCHEN

- Fully fitted kitchen by Symphony Linear ICE - White Matt
- Grey Stone worktop and upstand
- Blanco Andano kitchen sink
- AEG integrated fridge freezer
- AEG stainless steel gas hob
- AEG stainless steel double oven
- AEG fully integrated dishwasher
- AEG integrated washer dryer

### BEDROOM

- Neutral coloured Kingsmead Awesome carpet in stainless steel colour
- Built in wardrobe in the master bedroom

### BATHROOM

- Contemporary bathroom suite from Ideal standard sanitaryware
- Alterna heated towel rail
- Full wall & floor tiling in Saloni Street Art Ceniza

### GENERAL

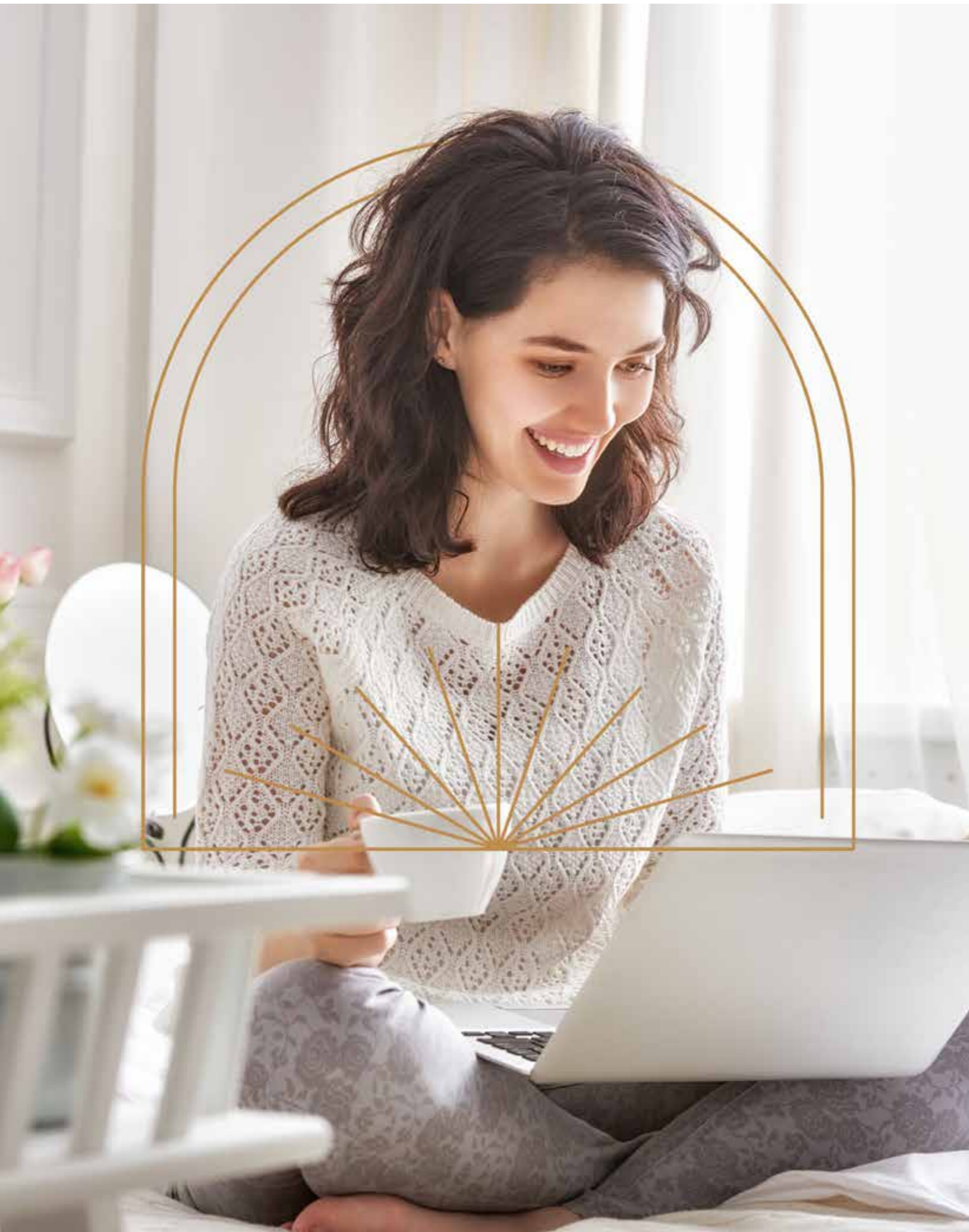
- Camaro Standard Laid - Smoked Brush flooring in hallway and lounge area
- Premier warranty
- Cycle store in basement
- Entrotec Video entry phone system
- Walls painted Dulux White
- All apartments wired for Sky Q
- Balconies/Terrance to all plots



The specification of the properties is correct at the date of print but may change as building works progress. Any computer generated image are indicative of the anticipated quality and style of the specification and may not represent the actual furnishings and fittings of the properties. Unless specifically incorporated in writing into the sales contract the specification is not intended to form part of any offer, contract, warranty or representation and should not be relied upon as a statement or representation of fact.



The specification of the properties is correct at the date of print but may change as building works progress. Any computer generated image are indicative of the anticipated quality and style of the specification and may not represent the actual furnishings and fittings of the properties. Unless specifically incorporated in writing into the sales contract the specification is not intended to form part of any offer, contract, warranty or representation and should not be relied upon as a statement or representation of fact.



## ABOUT BE WEST

BE WEST is a new brand for Shared Ownership and private sales within the four boroughs of west London, with a no-nonsense approach to homeownership.

An award winning team, BE WEST brings new homes to the heart of West London communities. Part of Shepherd's Bush Housing Association, our profits are reinvested back into affordable housing opportunities in our area, meaning you're not only buying a home of the highest quality, but one that enables more homes to be built for all in the area.



We aim to make the home buying experience as straightforward as possible, with our sales and customer care teams available to support you when needed, from your initial viewing to moving day.

Whether you're a first time buyer or looking for your next home, BE WEST offers a home to suit your needs.



020 8996 8925  
SALES@BEWEST.CO.UK  
BE WEST.CO.UK

All information in this document is correct at the time of publication going to print May 2021. The contents of this brochure should not be considered material information for the purposes of purchasing a home. No image or photograph (whether computer generated or otherwise) is taken as a statement or representation of fact, and no image or photograph (whether computer generated or otherwise) forms part of any offer, contract, warranty or representation. Registered office: L&Q, 29-35 West Ham Lane, Stratford, London E15 4PH. Homes & Communities Agency L4517. Registered Society 30441R Exempt charity. Your home is at risk if you fail to keep up repayments on a mortgage, rent or other loan secured on it. Please make sure you can afford the repayments before you take out a mortgage





020 8996 8925  
SALES@BEWEST.CO.UK  
BE WEST.CO.UK