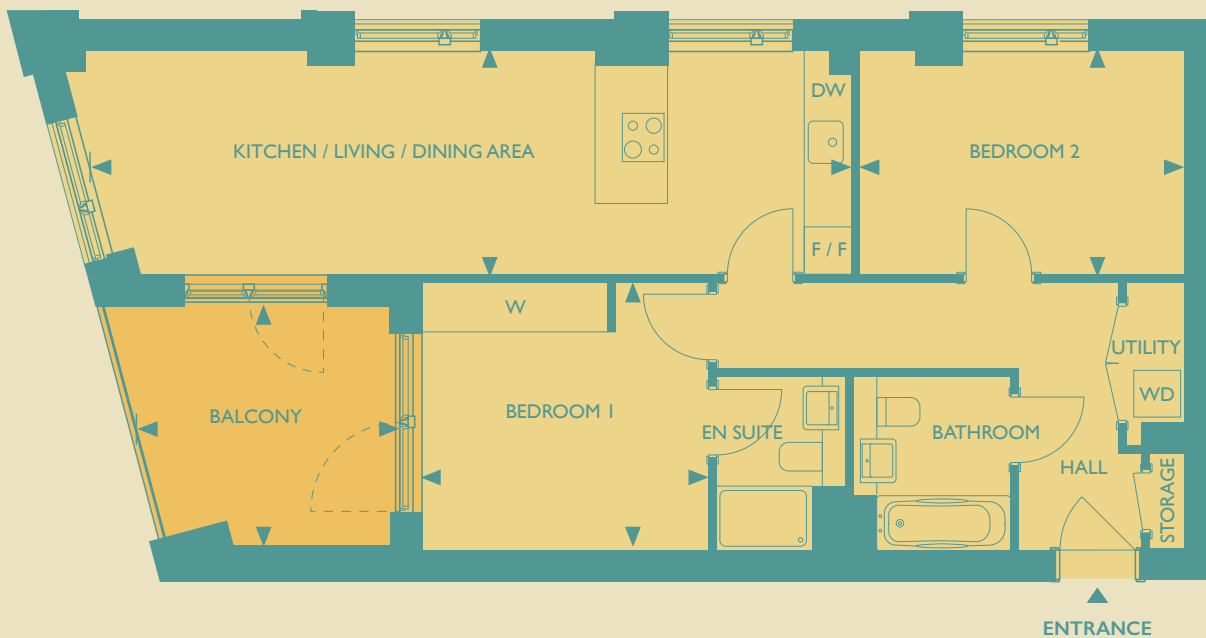




GALYON POINT

2 BEDROOM APARTMENT
Apartments 6, 14, 22 & 30



KITCHEN/LIVING/DINING AREA

9.60m x 2.80m
31'6" x 9'3"

GROSS INTERNAL AREA

71.9 sq. m.
773 sq. ft.

BEDROOM 1

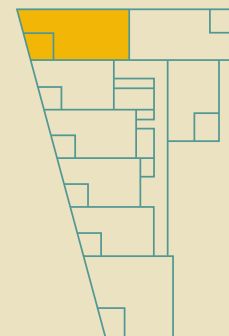
3.60m x 3.40m
11'11" x 11'2"

BALCONY

3.20m x 3.00m
10'6" x 9'9"

BEDROOM 2

4.20m x 2.80m
13'9" x 9'3"



APT 30	FOURTH FLOOR
APT 22	THIRD FLOOR
APT 14	SECOND FLOOR
APT 6	FIRST FLOOR

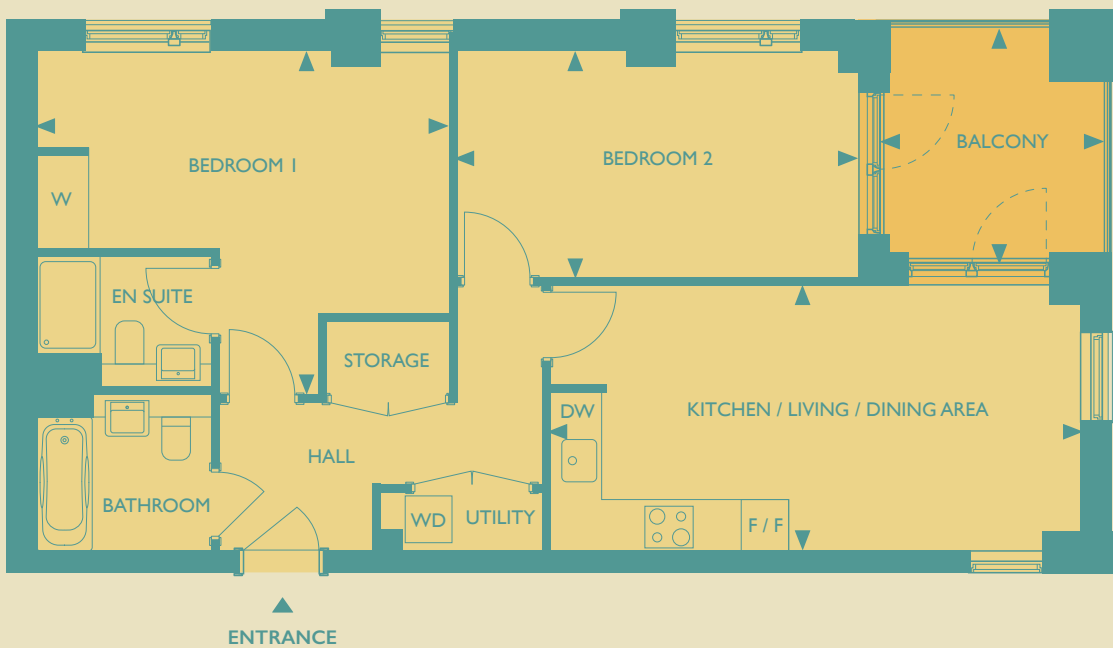
KEY: DW = DISHWASHER, F/F = FRIDGE FREEZER, W = WARDROBE, WD = WASHER DRYER

Heat interface unit (HIU) is located in storage or utility cupboards, please ask for more details. The floorplans depict a typical layout of this apartment type. For exact apartment specification, details of external and internal finishes, dimensions and floorplan differences, consult your Sales Executive. Any areas, measurements or distances quoted are approximate only and should not be used when ordering floor coverings or furnishings. Floorplans are not shown to scale. June 2022.



GALYON POINT

2 BEDROOM APARTMENT
Apartments 7, 15 & 23



KITCHEN/LIVING/DINING AREA

6.70m x 3.40m
22'0" x 11'0"

BEDROOM 1

5.20m x 4.30m
17'1" x 14'3"

BEDROOM 2

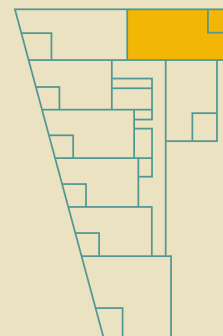
5.10m x 2.80m
16'7" x 9'4"

GROSS INTERNAL AREA

74.0 sq. m.
796 sq. ft.

BALCONY

2.90m x 2.80m
9'5" x 9'1"



APT 23	THIRD FLOOR
APT 15	SECOND FLOOR
APT 7	FIRST FLOOR

KEY: DW = DISHWASHER, F/F = FRIDGE FREEZER, W = WARDROBE, WD = WASHER DRYER

Heat interface unit (HIU) is located in storage or utility cupboards, please ask for more details. The floorplans depict a typical layout of this apartment type. For exact apartment specification, details of external and internal finishes, dimensions and floorplan differences, consult your Sales Executive. Any areas, measurements or distances quoted are approximate only and should not be used when ordering floor coverings or furnishings. Floorplans are not shown to scale. June 2022.