

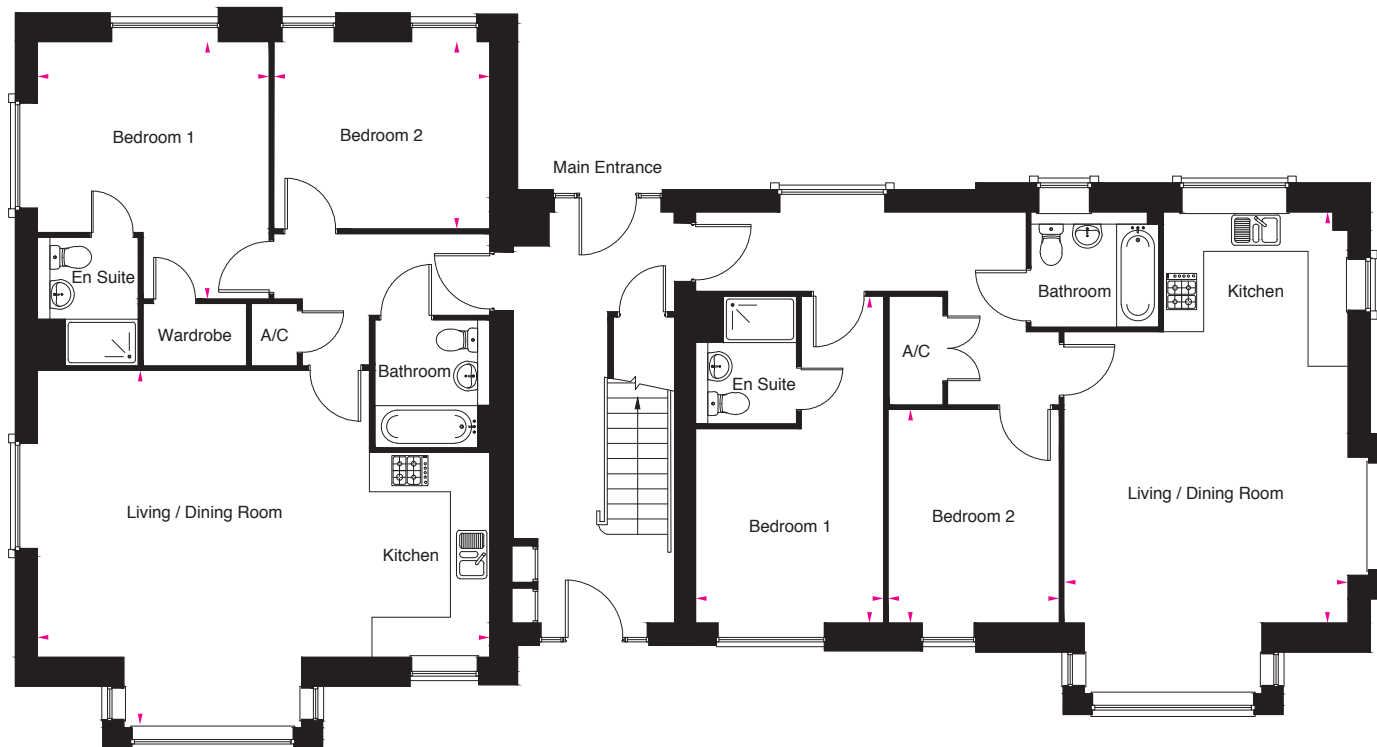
Wouldham River View



Kiln View

Peters Village | Wouldham





Apartment AP4A 100

Kitchen / Dining / Living Room	7468mm x 5904mm	(24'6" x 19'4")
Bedroom 1	4248mm x 3826mm	(13'11" max x 12'6")
Bedroom 2	3566mm x 3093mm	(11'8" x 10'2")

Apartment AP4B 101

Kitchen / Dining / Living Room	6793mm x 5032mm	(22'3" x 16'6")
Bedroom 1	5404mm x 3103mm	(17'8" max x 10'2")
Bedroom 2	3529mm x 2826mm	(11'7" x 9'3")

Kiln View
Peters Village | Wouldham



Wouldham (First and Second Floor)

2 bedroom



Apartment AP4A 102 104

Kitchen / Dining / Living Room	7468mm x 5904mm	(24'6" x 19'4")
Bedroom 1	4248mm x 3826mm	(13'11" max x 12'6")
Bedroom 2	3566mm x 3093mm	(11'8" x 10'2")

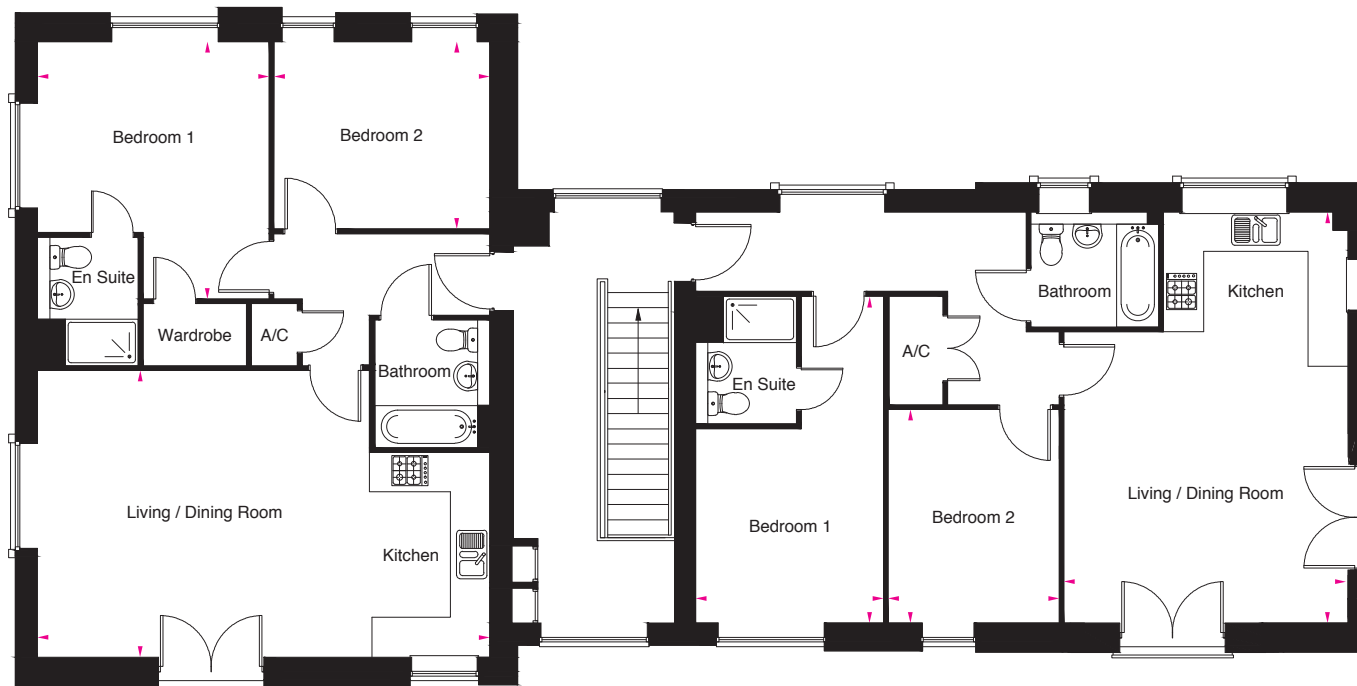
Apartment AP4B 103 105

Kitchen / Dining / Living Room	6793mm x 5032mm	(22'3" x 16'6")
Bedroom 1	5404mm x 3103mm	(17'8" max x 10'2")
Bedroom 2	3529mm x 2826mm	(11'7" x 9'3")

Kiln View
Peters Village | Wouldham



Floor plans are not drawn to scale, measurements are maximum approximate dimensions and given as a guide only. These should not be used as a basis for purchasing flooring or furniture. Orbit Homes reserve the right to alter plans, specification, position of doors and windows and change the tenure subject to demand without prior notice. External elevations vary from plot to plot. Please ask the Sales Consultant for current information when reserving your new home. Information correct at time of going to print. February 2017.



Apartment AP4C 106

Kitchen / Dining / Living Room	7468mm x 5904mm	(24'6" x 19'4")
Bedroom 1	4248mm x 3826mm	(13'11" max x 12'6")
Bedroom 2	3566mm x 3093mm	(11'8" x 10'2")

Apartment AP4D 107

Kitchen / Dining / Living Room	6793mm x 4694mm	(22'3" x 15'4")
Bedroom 1	5404mm x 3103mm	(17'8" max x 10'2")
Bedroom 2	3529mm x 2826mm	(11'7" x 9'3")

Kiln View
Peters Village | Wouldham

