

# 59 FERN GROVE

**59** FERN  
GROVE  
*Feltham*  
TW14

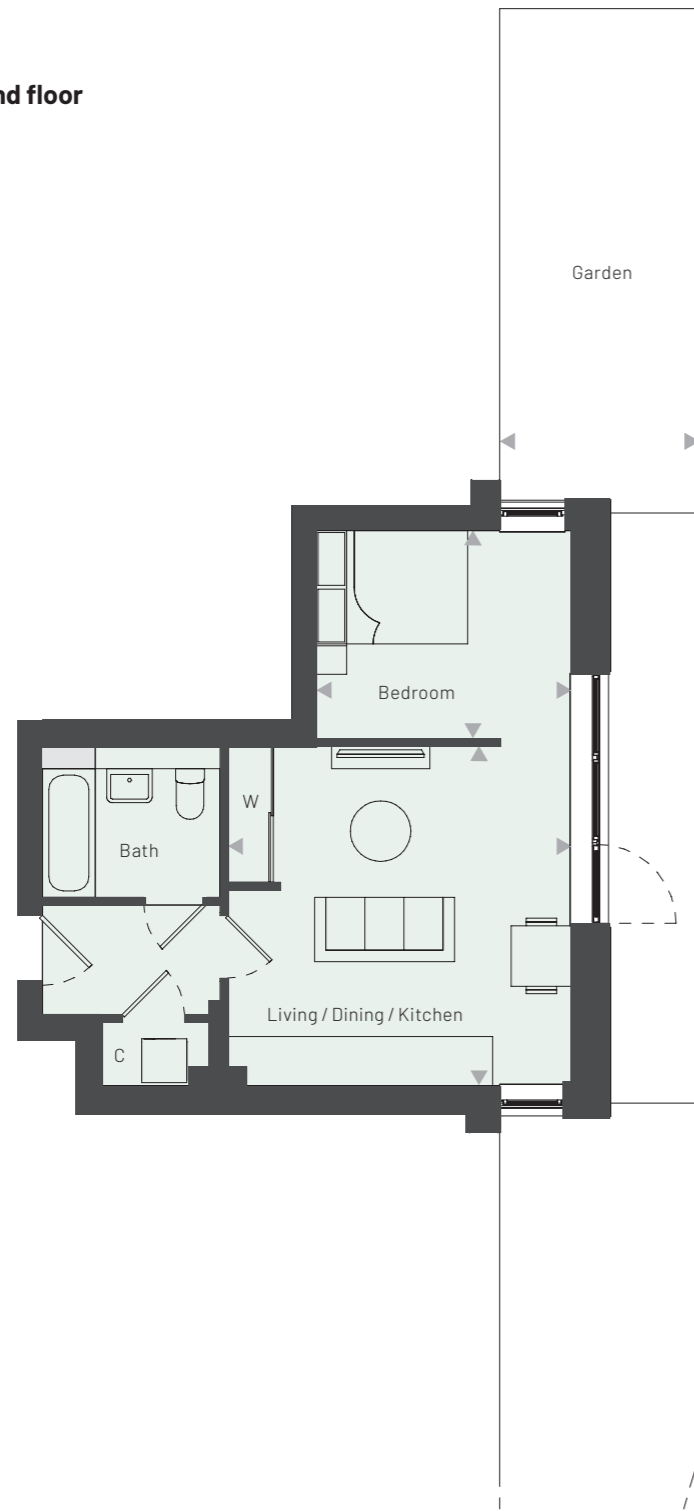
**LINNET HOUSE**  
FLOORPLANS



W  
R  
N  
E

### APARTMENT 3

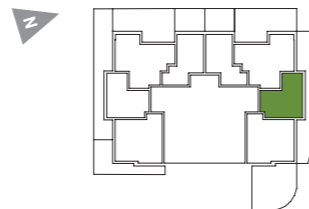
Linnet House **Ground floor**  
1 Bedroom



#### DIMENSIONS

Bedroom	3.40 m x 2.75 m	11' 1" x 9' 0"
Living / Dining / Kitchen	4.55 m x 4.50 m	14' 11" x 14' 9"
Garden	2.65 m x 21.80 m	8' 8" x 71' 7"
<b>GROSS INTERNAL AREA</b>	<b>40.3 sq m</b>	<b>433.7 sq ft</b>

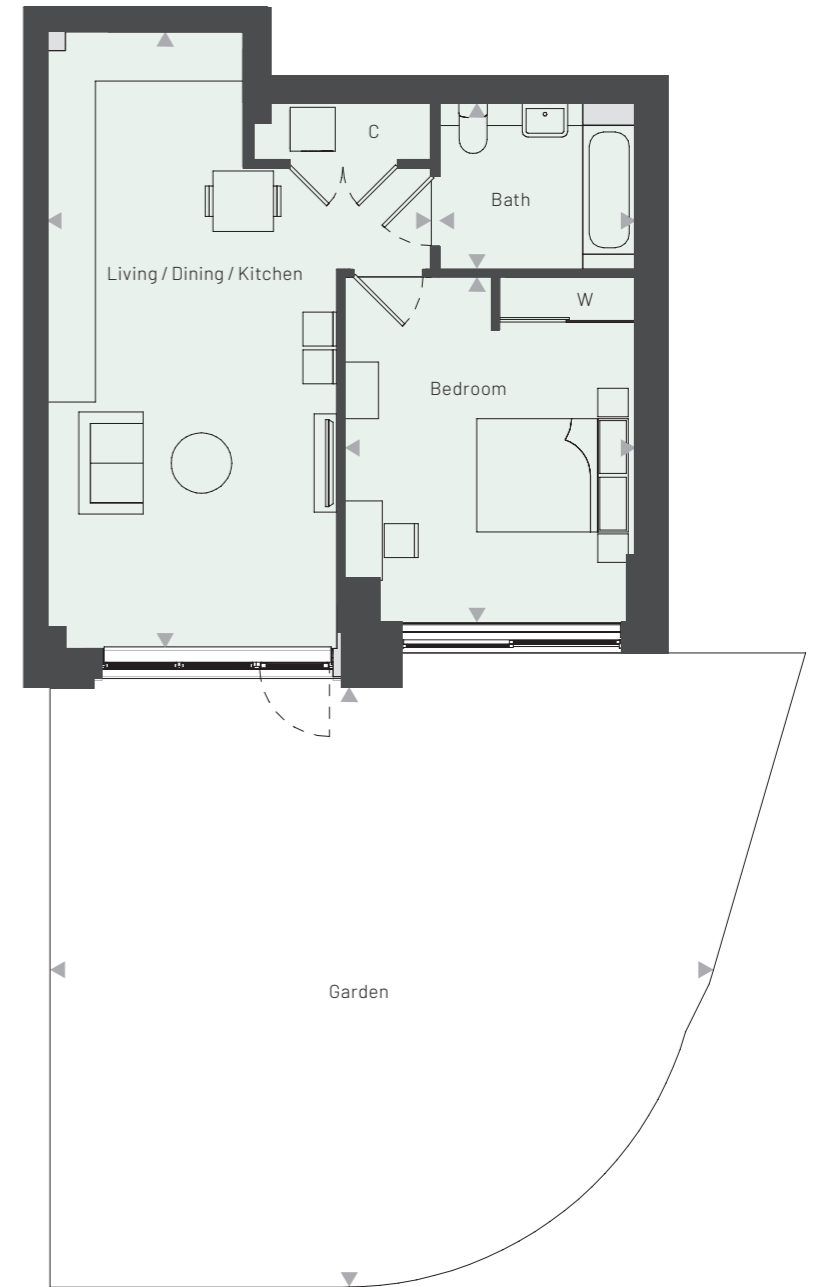
#### LOCATION



Floorplans are not to scale and are indicative only. Location of windows, doors, bathroom fittings, kitchen units and appliances may differ. Dimensions given are approximate and should not be used to order carpets or furniture. Balcony sizes and locations may differ from those illustrated

### APARTMENT 4

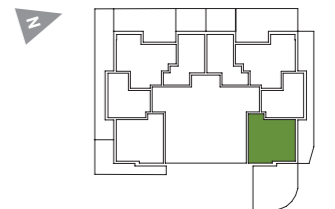
Linnet House **Ground floor**  
1 Bedroom



#### DIMENSIONS

Bedroom	4.60 m x 3.85 m	15' 0" x 12' 8"
Living / Dining / Kitchen	8.15 m x 5.10 m	26' 9" x 16' 8"
Living / Dining / Kitchen	2.20 m x 2.60 m	7' 3" x 8' 7"
Garden	7.95 m x 8.75 m	26' 0" x 28' 9"
<b>GROSS INTERNAL AREA</b>	<b>57.3 sq m</b>	<b>617.1 sq ft</b>

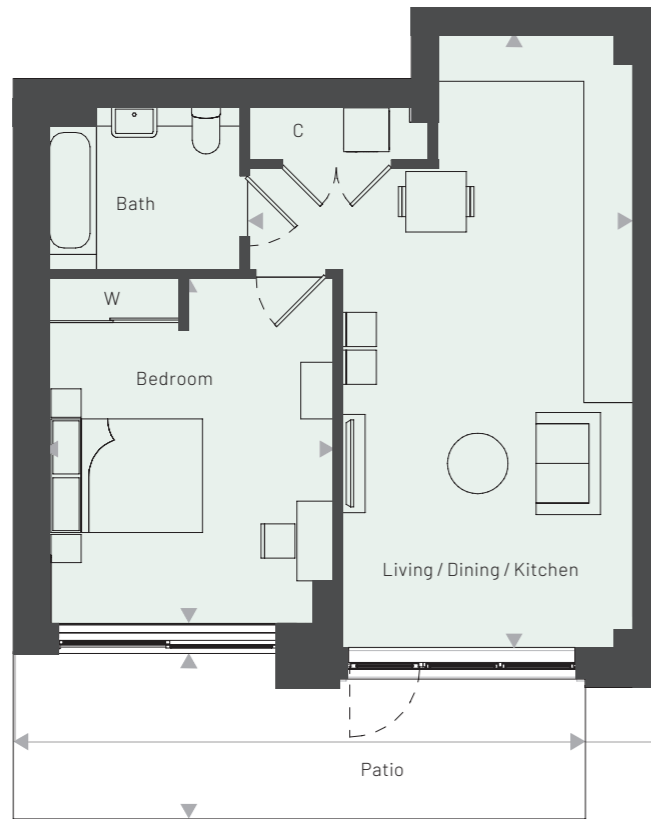
#### LOCATION



Floorplans are not to scale and are indicative only. Location of windows, doors, bathroom fittings, kitchen units and appliances may differ. Dimensions given are approximate and should not be used to order carpets or furniture. Balcony sizes and locations may differ from those illustrated

## APARTMENT 5

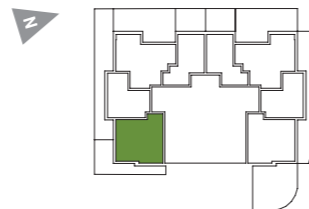
Linnet House **Ground floor**  
1 Bedroom



### DIMENSIONS

Bedroom	4.60 m x 3.85 m	15' 0" x 12' 8"
Living / Dining / Kitchen	8.15 m x 5.10 m	26' 9" x 16' 8"
Patio	2.20 m x 7.55 m	7' 2" x 24' 10"
<b>GROSS INTERNAL AREA</b>	<b>57.3 sq m</b>	<b>617.1 sq ft</b>

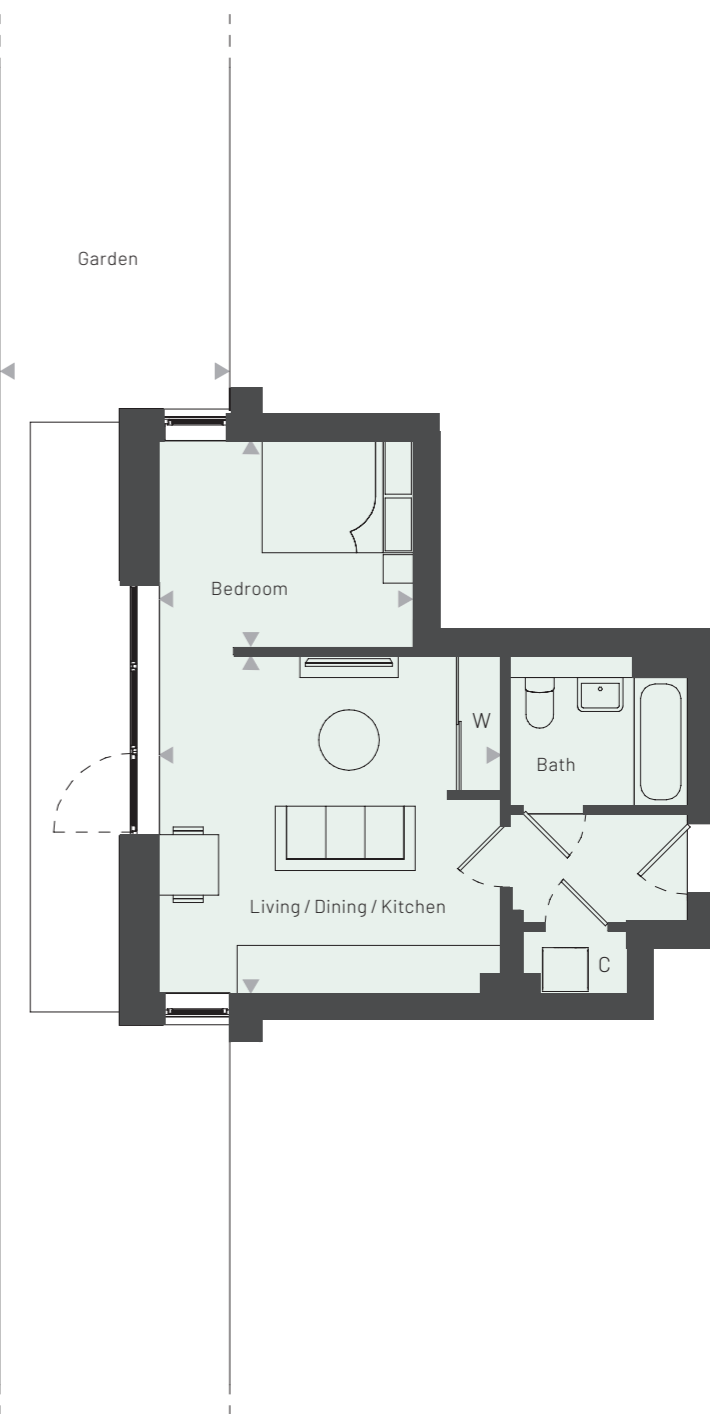
### LOCATION



Floorplans are not to scale and are indicative only. Location of windows, doors, bathroom fittings, kitchen units and appliances may differ. Dimensions given are approximate and should not be used to order carpets or furniture. Balcony sizes and locations may differ from those illustrated

## APARTMENT 6

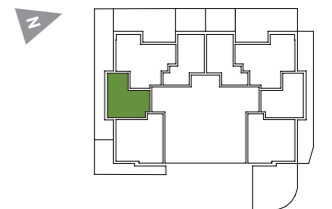
Linnet House **Ground floor**  
1 Bedroom



### DIMENSIONS

Bedroom	3.40 m x 2.75 m	11' 1" x 9' 0"
Living / Dining / Kitchen	4.55 m x 4.50 m	14' 11" x 14' 9"
Patio	3.05 m x 21.80 m	10' 0" x 71' 7"
<b>GROSS INTERNAL AREA</b>	<b>40.3 sq m</b>	<b>433.7 sq ft</b>

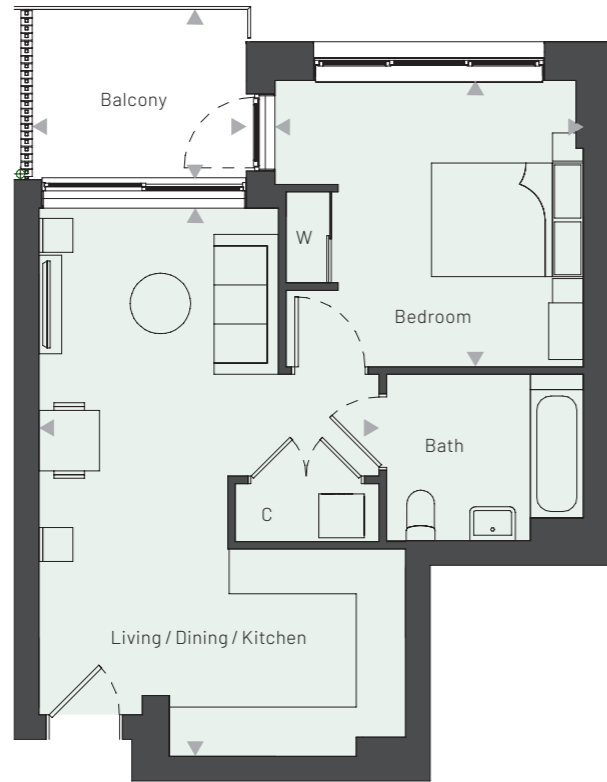
### LOCATION



Floorplans are not to scale and are indicative only. Location of windows, doors, bathroom fittings, kitchen units and appliances may differ. Dimensions given are approximate and should not be used to order carpets or furniture. Balcony sizes and locations may differ from those illustrated

## APARTMENT 10

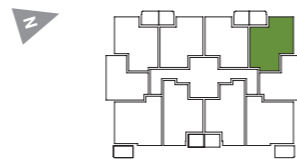
Linnet House **Floor 1**  
1 Bedroom



### DIMENSIONS

Bedroom	3.80 m x 4.10 m	12' 5" x 13' 5"
Living / Dining / Kitchen	7.25 m x 4.50 m	23' 9" x 14' 9"
Balcony	2.25 m x 2.85 m	7' 5" x 9' 4"
<b>GROSS INTERNAL AREA</b>	<b>51.5 sq m</b>	<b>554.3 sq ft</b>

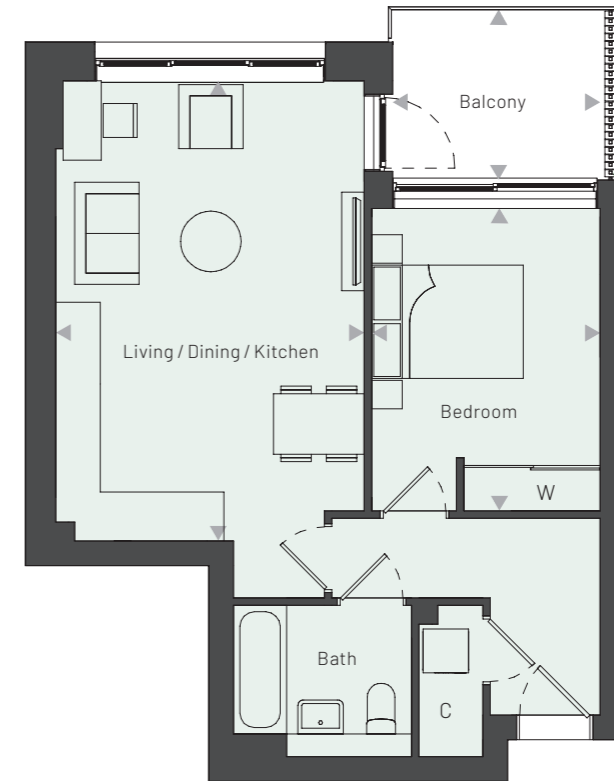
### LOCATION



Floorplans are not to scale and are indicative only. Location of windows, doors, bathroom fittings, kitchen units and appliances may differ. Dimensions given are approximate and should not be used to order carpets or furniture. Balcony sizes and locations may differ from those illustrated

## APARTMENT 17

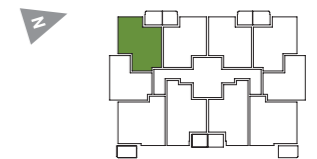
Linnet House **Floor 1**  
1 Bedroom



### DIMENSIONS

Bedroom	4.00 m x 3.00 m	13' 1" x 9' 11"
Living / Dining / Kitchen	6.10 m x 4.10 m	20' 0" x 13' 5"
Balcony	2.25 m x 2.75 m	7' 5" x 9' 0"
<b>GROSS INTERNAL AREA</b>	<b>51.5 sq m</b>	<b>554.3 sq ft</b>

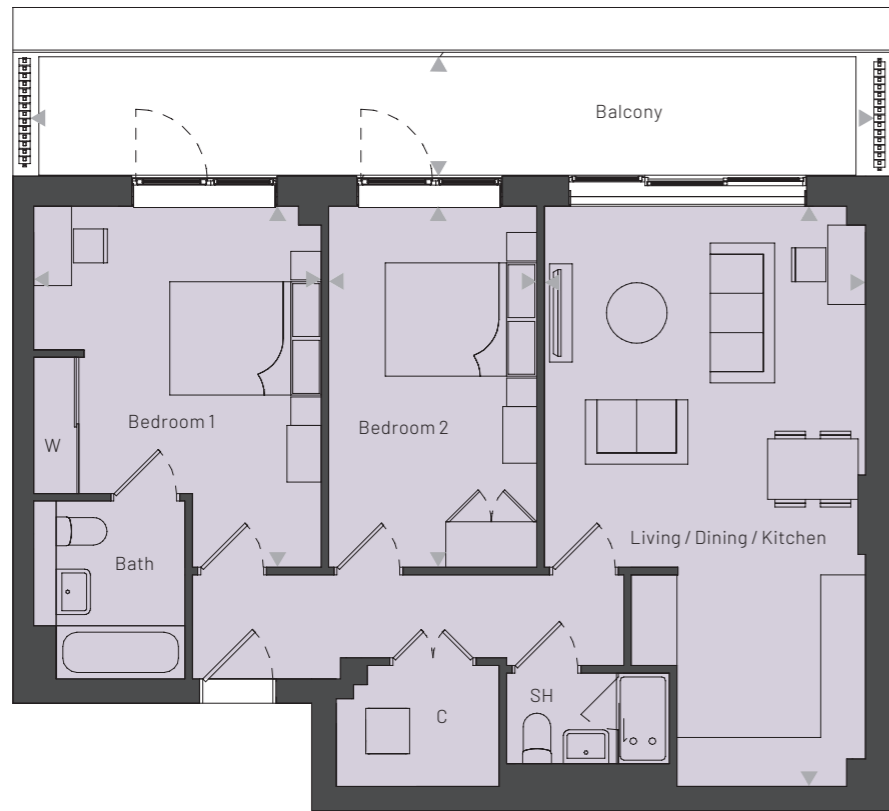
### LOCATION



Floorplans are not to scale and are indicative only. Location of windows, doors, bathroom fittings, kitchen units and appliances may differ. Dimensions given are approximate and should not be used to order carpets or furniture. Balcony sizes and locations may differ from those illustrated

## APARTMENT 51

Linnet House **Floor 6**  
2 Bedroom

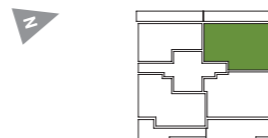


### DIMENSIONS

Bedroom 1	4.80m x 3.80m	15' 8" x 12' 6"
Bedroom 2	4.80m x 2.75m	15' 8" x 9' 0"
Living / Dining / Kitchen	7.70 m x 4.25 m	25' 2" x 13' 11"
Balcony	1.60m x 11.15m	5' 2" x 36' 7"

**GROSS INTERNAL AREA 78.7 sq m 847.0 sq ft**

### LOCATION



Floorplans are not to scale and are indicative only. Location of windows, doors, bathroom fittings, kitchen units and appliances may differ. Dimensions given are approximate and should not be used to order carpets or furniture. Balcony sizes and locations may differ from those illustrated

## APARTMENT 52

Linnet House **Floor 6**  
2 Bedroom

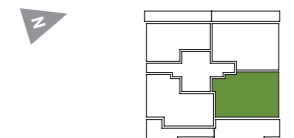


### DIMENSIONS

Bedroom 1	4.20m x 3.30m	13' 10" x 10' 9"
Bedroom 2	4.55m x 2.75m	14' 11" x 9' 0"
Living / Dining / Kitchen	7.45 m x 4.25 m	24' 5" x 13' 11"
Balcony	3.05m x 10.20m	10' 1" x 33' 6"

**GROSS INTERNAL AREA 76.5 sq m 823.9 sq ft**

### LOCATION



Floorplans are not to scale and are indicative only. Location of windows, doors, bathroom fittings, kitchen units and appliances may differ. Dimensions given are approximate and should not be used to order carpets or furniture. Balcony sizes and locations may differ from those illustrated

## APARTMENT 53

Linnet House **Floor 6**  
2 Bedroom



### DIMENSIONS

Bedroom 1	4.95m x 2.80m	16' 2" x 9' 3"
Bedroom 2	4.20m x 2.90m	13' 9" x 9' 6"
Living / Dining / Kitchen	5.35 m x 5.15 m	17' 7" x 16' 10"
Balcony	3.20m x 11.35m	10' 7" x 37' 2"

**GROSS INTERNAL AREA 71.1 sq m 765.3 sq ft**

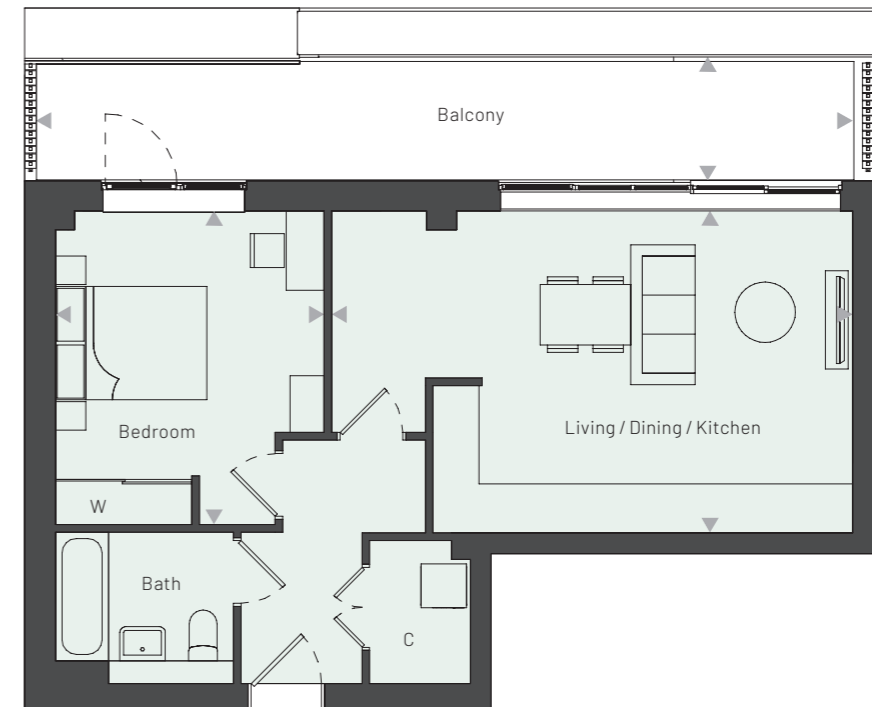
### LOCATION



Floorplans are not to scale and are indicative only. Location of windows, doors, bathroom fittings, kitchen units and appliances may differ. Dimensions given are approximate and should not be used to order carpets or furniture. Balcony sizes and locations may differ from those illustrated

## APARTMENT 54

Linnet House **Floor 6**  
1 Bedroom

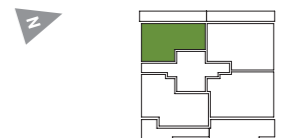


### DIMENSIONS

Bedroom	4.15m x 3.55m	13' 7" x 11' 8"
Living / Dining / Kitchen	4.25 m x 6.90 m	14' 0" x 22' 7"
Balcony	1.65m x 10.80m	5' 5" x 35' 5"

**GROSS INTERNAL AREA 55.8 sq m 600.4 sq ft**

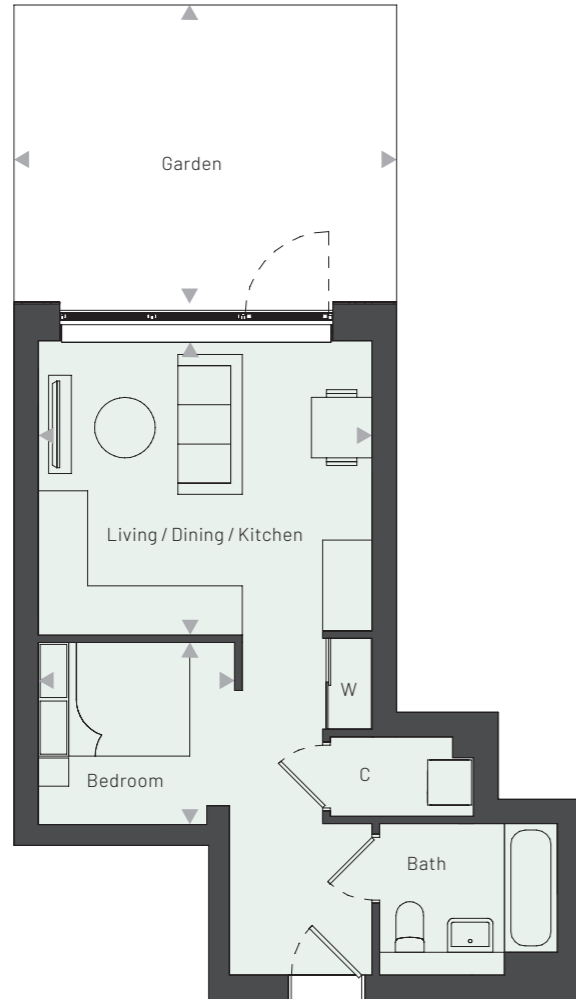
### LOCATION



Floorplans are not to scale and are indicative only. Location of windows, doors, bathroom fittings, kitchen units and appliances may differ. Dimensions given are approximate and should not be used to order carpets or furniture. Balcony sizes and locations may differ from those illustrated

## APARTMENTS 1 & 8

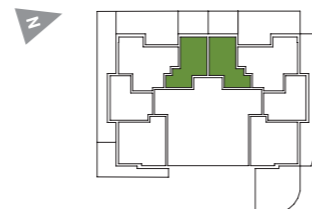
Linnet House **Ground Floor**  
1 Bedroom



### DIMENSIONS

Bedroom	2.40m x 2.60m	7' 11" x 8' 6"
Living / Dining / Kitchen	3.85 m x 4.40 m	12' 8" x 14' 6"
Garden	3.95m x 5.05m	13' 0" x 16' 7"
<b>GROSS INTERNAL AREA</b>	<b>38.4 sq m</b>	<b>413.2 sq ft</b>

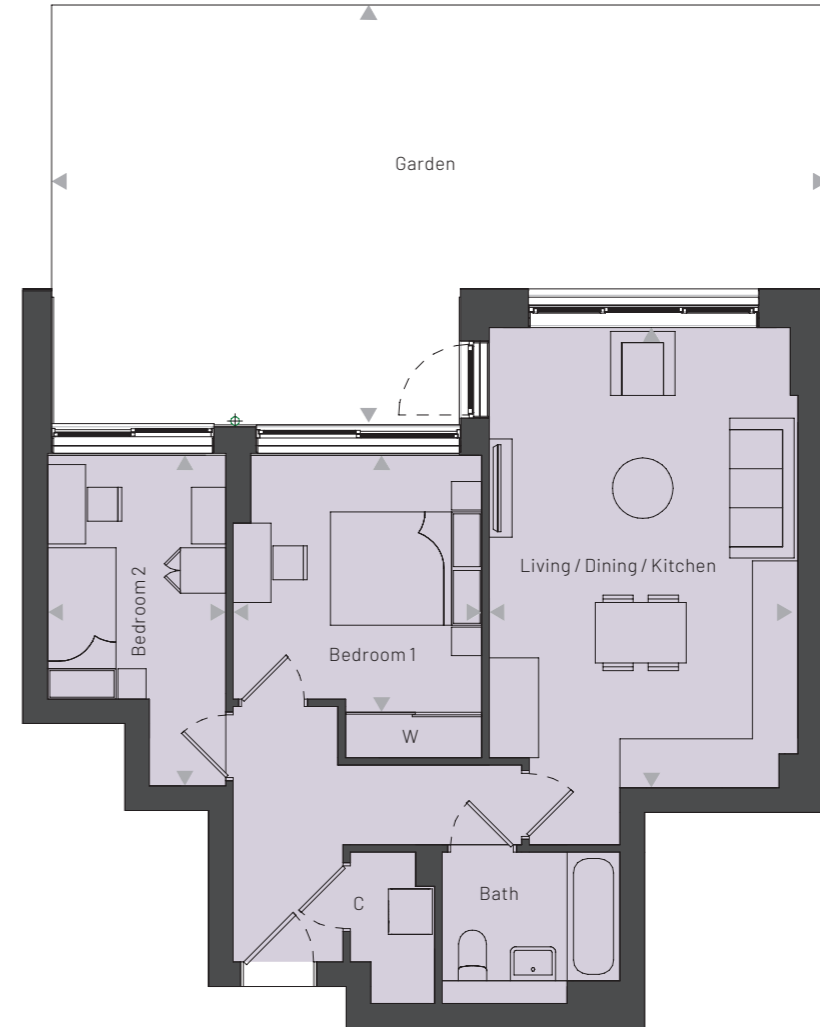
### LOCATION



Floorplans are not to scale and are indicative only. Location of windows, doors, bathroom fittings, kitchen units and appliances may differ. Dimensions given are approximate and should not be used to order carpets or furniture. Balcony sizes and locations may differ from those illustrated

## APARTMENTS 2 & 7

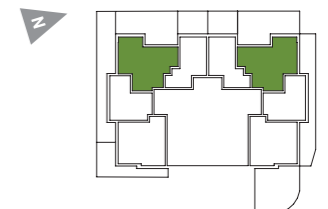
Linnet House **Ground Floor**  
2 Bedroom



### DIMENSIONS

Bedroom 1	3.40m x 3.30m	11' 2" x 10' 9"
Bedroom 2	4.40m x 2.35m	14' 4" x 7' 9"
Living / Dining / Kitchen	6.10 m x 4.00 m	20' 0" x 13' 2"
Garden	5.55m x 10.25m	18' 2" x 33' 8"
<b>GROSS INTERNAL AREA</b>	<b>62.4 sq m</b>	<b>671.4 sq ft</b>

### LOCATION

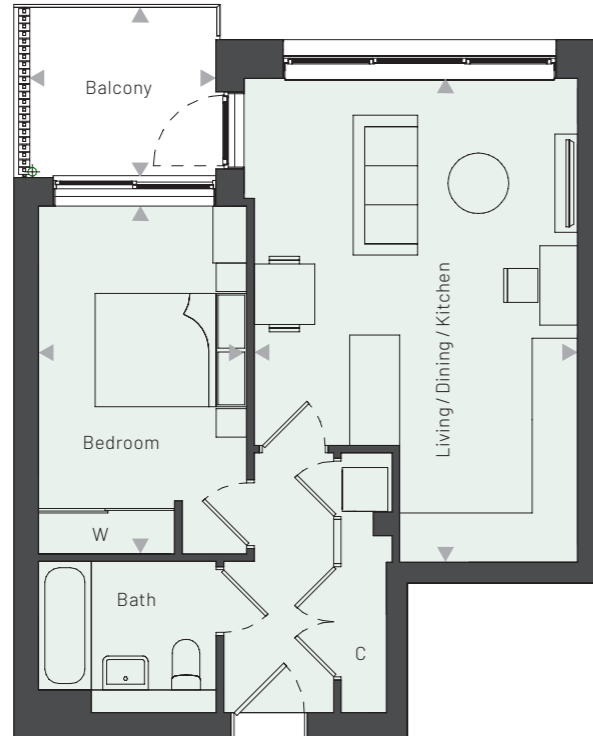


Floorplans are not to scale and are indicative only. Location of windows, doors, bathroom fittings, kitchen units and appliances may differ. Dimensions given are approximate and should not be used to order carpets or furniture. Balcony sizes and locations may differ from those illustrated



**APARTMENTS 9, 18, 19, 26, 27, 34, 35, 42, 43 & 50**

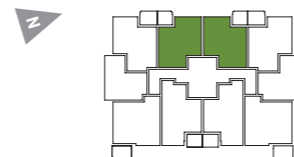
Linnet House **Floors 1, 2, 3, 4 & 5**  
1 Bedroom



**DIMENSIONS**

Bedroom	4.60m x 2.70m	15' 1" x 8' 11"
Living / Dining / Kitchen	6.40m x 4.30m	21' 0" x 14' 0"
Balcony	2.25m x 2.45m	7' 5" x 8' 1"
<b>GROSS INTERNAL AREA</b>	<b>50.2 sq m</b>	<b>539.8 sq ft</b>

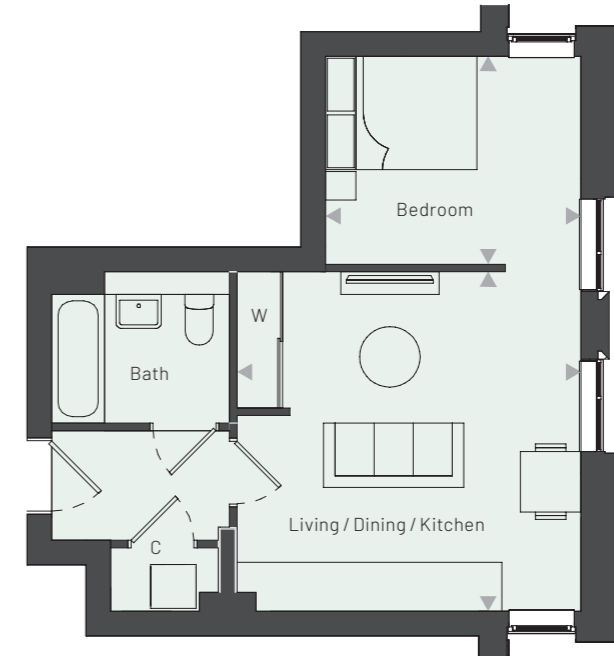
**LOCATION**



Floorplans are not to scale and are indicative only. Location of windows, doors, bathroom fittings, kitchen units and appliances may differ. Dimensions given are approximate and should not be used to order carpets or furniture. Balcony sizes and locations may differ from those illustrated

**APARTMENTS 11 & 16**

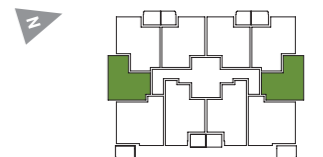
Linnet House **Floor 1**  
1 Bedroom



**DIMENSIONS**

Living / Dining / Kitchen	4.55m x 4.50m	14' 11" x 14' 9"
Bedroom	3.40m x 2.75m	11' 1" x 9' 0"
<b>GROSS INTERNAL AREA</b>	<b>40.3 sq m</b>	<b>433.7 sq ft</b>

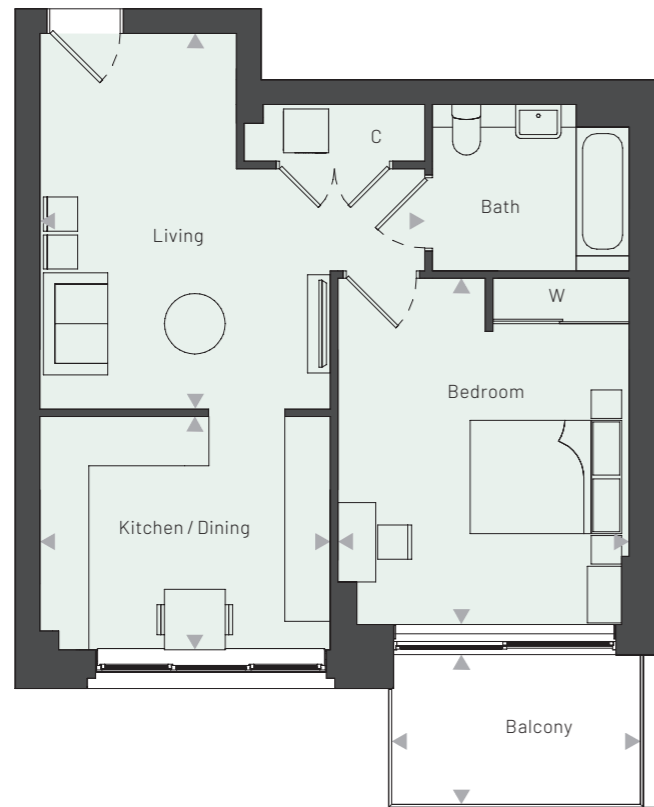
**LOCATION**



Floorplans are not to scale and are indicative only. Location of windows, doors, bathroom fittings, kitchen units and appliances may differ. Dimensions given are approximate and should not be used to order carpets or furniture. Balcony sizes and locations may differ from those illustrated

**APARTMENT 12 & 15**

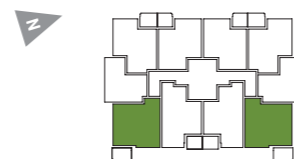
Linnet House **Floor 1**  
1 Bedroom



**DIMENSIONS**

Bedroom	4.60m x 3.85m	15' 0" x 12' 8"
Kitchen / Dining	3.10m x 3.85m	10' 1" x 12' 7"
Living	4.95m x 5.10m	16' 4" x 16' 8"
Balcony	2.00m x 3.30m	6' 6" x 10' 9"
<b>GROSS INTERNAL AREA</b>	<b>57.3 sq m</b>	<b>617.1 sq ft</b>

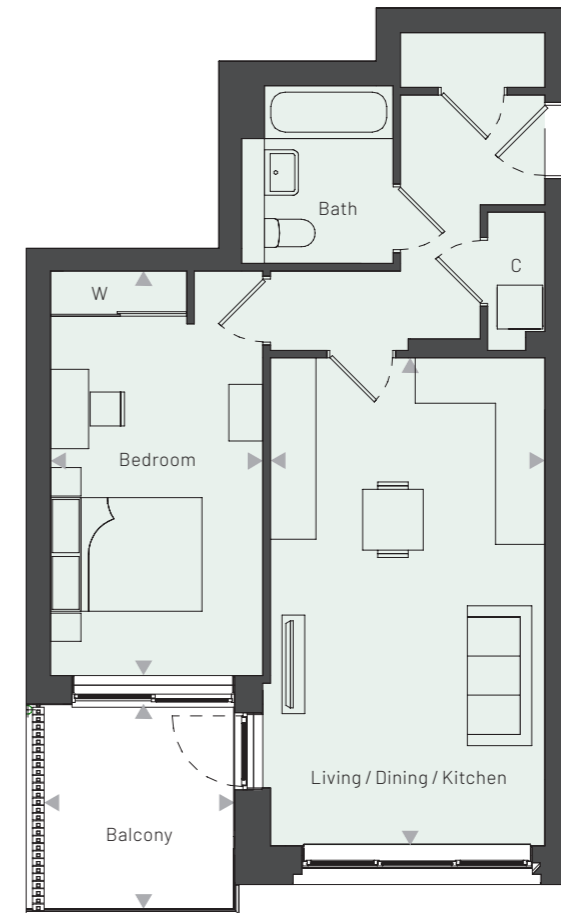
**LOCATION**



Floorplans are not to scale and are indicative only. Location of windows, doors, bathroom fittings, kitchen units and appliances may differ. Dimensions given are approximate and should not be used to order carpets or furniture. Balcony sizes and locations may differ from those illustrated

**APARTMENTS 13 & 14**

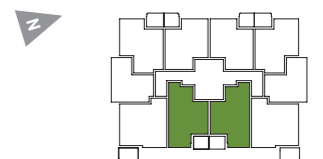
Linnet House **Floor 1**  
1 Bedroom



**DIMENSIONS**

Bedroom	5.35m x 2.80m	17' 7" x 9' 2"
Living / Dining / Kitchen	6.45 m x 3.65 m	21' 2" x 11' 11"
Balcony	2.70m x 2.50m	8' 11" x 8' 3"
<b>GROSS INTERNAL AREA</b>	<b>54.4 sq m</b>	<b>585.6 sq ft</b>

**LOCATION**



Floorplans are not to scale and are indicative only. Location of windows, doors, bathroom fittings, kitchen units and appliances may differ. Dimensions given are approximate and should not be used to order carpets or furniture. Balcony sizes and locations may differ from those illustrated

**APARTMENTS 20, 25, 28, 33, 36, 41, 44 & 49**

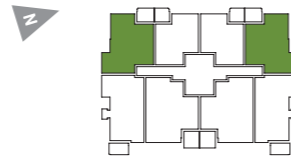
Linnet House **Floors 2, 3, 4 & 5**  
2 Bedroom



**DIMENSIONS**

Bedroom 1	4.90m x 3.00m	16' 0" x 9' 11"
Bedroom 2	3.40m x 3.45m	11' 2" x 11' 4"
Living / Dining / Kitchen	6.15m x 3.95m	20' 2" x 13' 0"
Balcony	2.25m x 2.85m	7' 5" x 9' 4"
<b>GROSS INTERNAL AREA</b>	<b>65.0 sq m</b>	<b>700.1 sq ft</b>

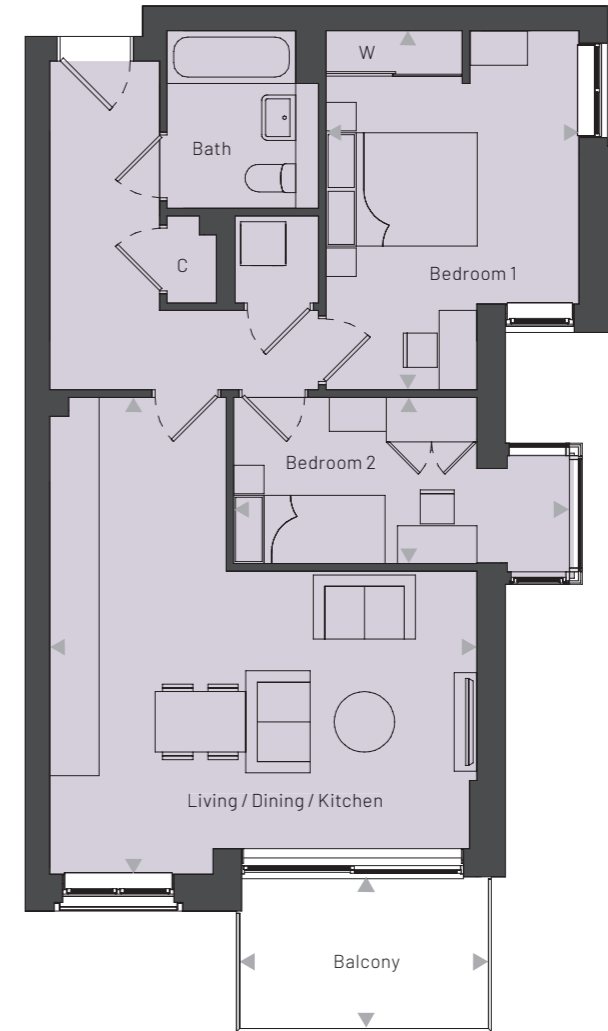
**LOCATION**



Floorplans are not to scale and are indicative only. Location of windows, doors, bathroom fittings, kitchen units and appliances may differ. Dimensions given are approximate and should not be used to order carpets or furniture. Balcony sizes and locations may differ from those illustrated

**APARTMENTS 21, 24, 29, 32, 37, 40, 45 & 48**

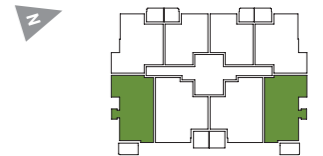
Linnet House **Floors 2, 3, 4 & 5**  
2 Bedroom



**DIMENSIONS**

Bedroom 1	4.75m x 3.35m	15' 7" x 11' 0"
Bedroom 2	2.20m x 4.45m	7' 2" x 14' 6"
Living / Dining / Kitchen	6.30m x 5.65m	20' 8" x 18' 6"
Balcony	2.00m x 3.30m	6' 7" x 10' 9"
<b>GROSS INTERNAL AREA</b>	<b>68.0 sq m</b>	<b>732.1 sq ft</b>

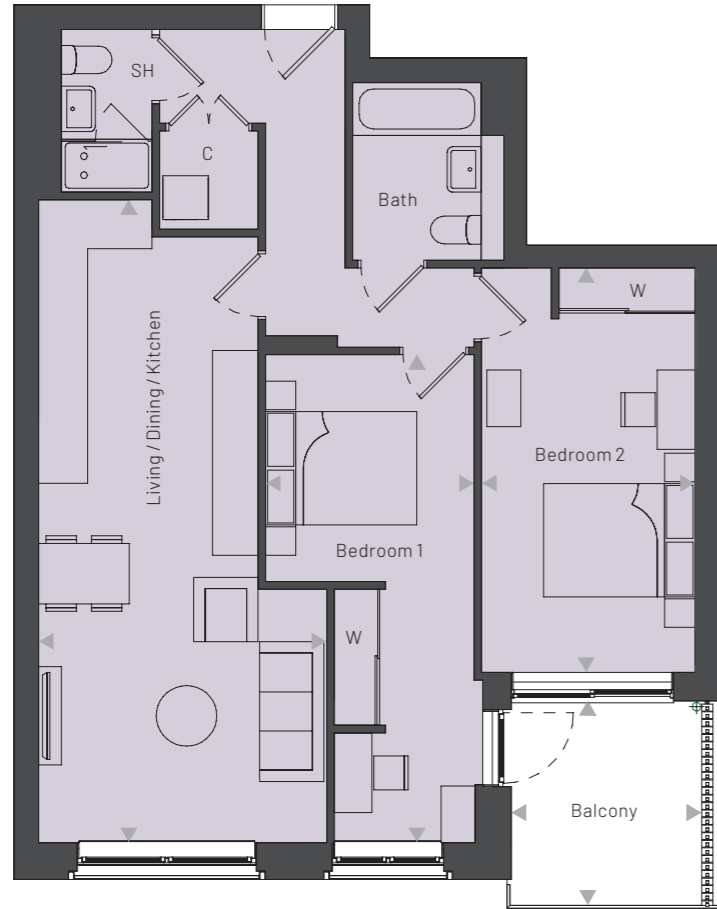
**LOCATION**



Floorplans are not to scale and are indicative only. Location of windows, doors, bathroom fittings, kitchen units and appliances may differ. Dimensions given are approximate and should not be used to order carpets or furniture. Balcony sizes and locations may differ from those illustrated

**APARTMENTS 22, 23, 30, 31, 38, 39, 46 & 47**

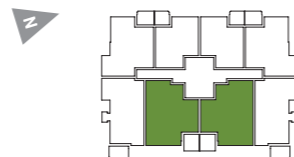
Linnet House **Floors 2, 3, 4 & 5**  
2 Bedroom



**DIMENSIONS**

Bedroom 1	6.45m x 2.75m	21' 2" x 9' 0"
Bedroom 2	5.35m x 2.80m	17' 7" x 9' 3"
Living / Dining / Kitchen	8.50m x 3.80m	27' 11" x 12' 6"
Balcony	2.70m x 2.50m	8' 10" x 8' 3"
<b>GROSS INTERNAL AREA</b>	<b>77.5 sq m</b>	<b>833.8 sq ft</b>

**LOCATION**



Computer generated image of Phase 2

Floorplans are not to scale and are indicative only. Location of windows, doors, bathroom fittings, kitchen units and appliances may differ. Dimensions given are approximate and should not be used to order carpets or furniture. Balcony sizes and locations may differ from those illustrated

W  
D  
L  
L