



ASCOT HOUSE

STAINES - UPON - THAMES



LATIMER
by Clarion Housing Group



Contents

02

INTRODUCTION

18

FURTHER AFIELD

04

THE DEVELOPMENT

20

SPECIFICATION

06

LOCAL AREA

22

SITE PLAN

12

CONNECTIONS

26

FLOOR PLANS

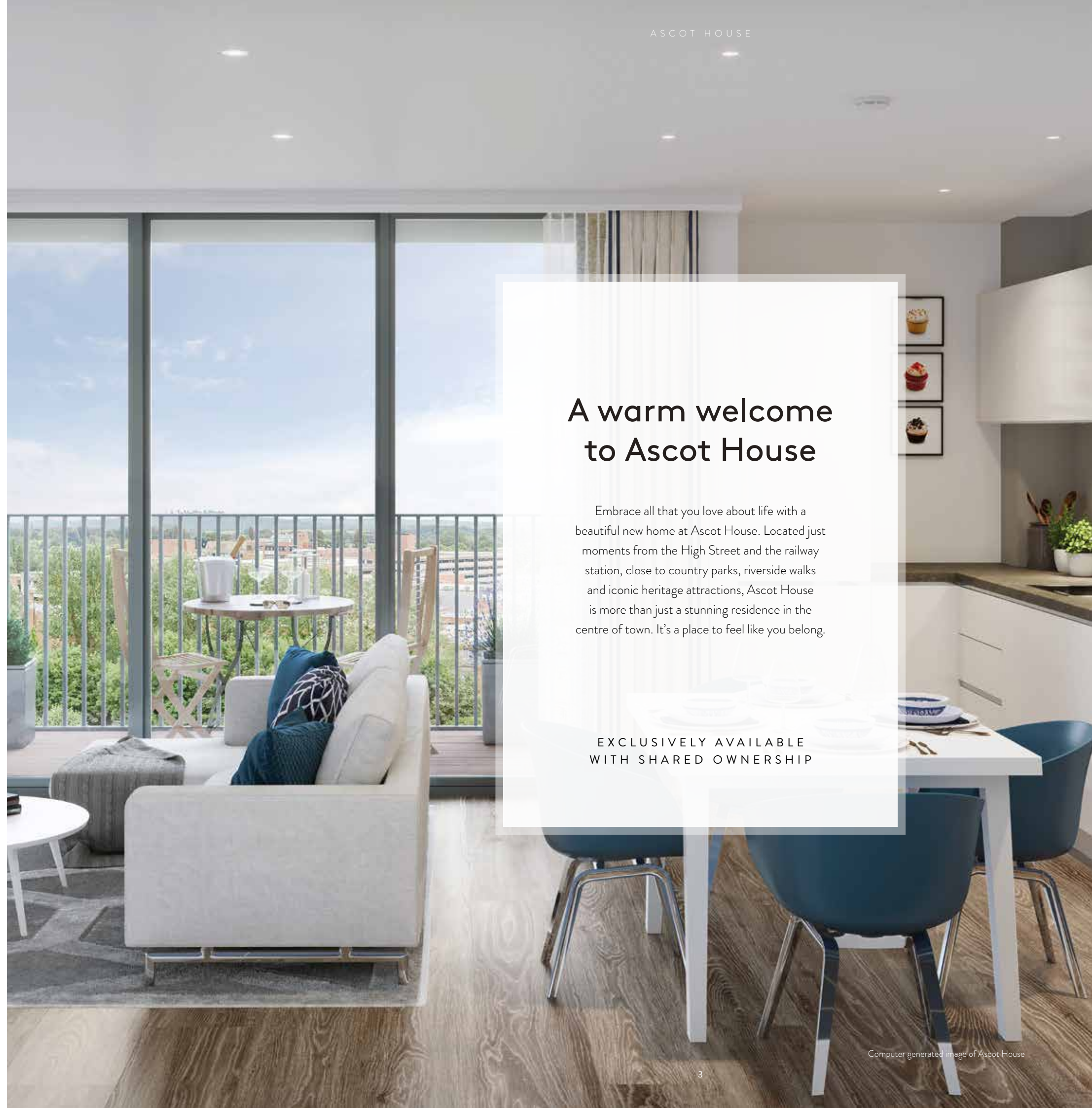
16

LONDON

50

ABOUT CLARION





A warm welcome to Ascot House

Embrace all that you love about life with a beautiful new home at Ascot House. Located just moments from the High Street and the railway station, close to country parks, riverside walks and iconic heritage attractions, Ascot House is more than just a stunning residence in the centre of town. It's a place to feel like you belong.

EXCLUSIVELY AVAILABLE WITH SHARED OWNERSHIP

RE

LAX

A luxury home with peaceful gardens

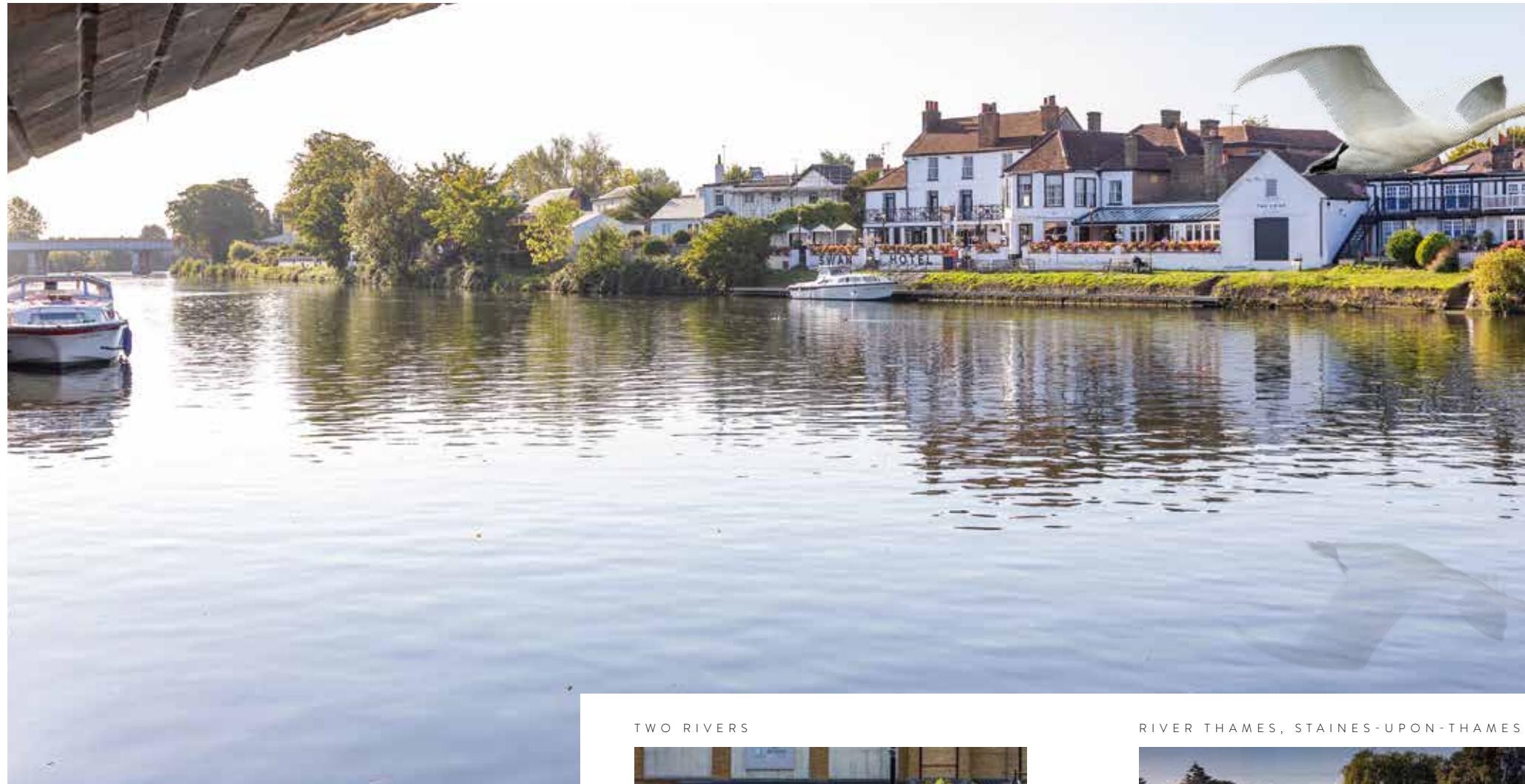
Ascot House is a striking collection of 104 studio, one and two bedroom apartments in the bustling town of Staines-upon-Thames. Designed and finished to a luxuriously high standard, each home features a sleek, contemporary kitchen and full-length windows for maximum light and a spacious balcony.

Outside you'll find the beautifully landscaped central courtyard, with many places to relax and unwind, along with the private rooftop garden which offers impressive views to the city.



Computer generated image of Ascot House

THRIVE



Discover the perfect place to live well

Set just a short walk from the town centre and river, a home at Ascot House means everything you could want is there on your doorstep.

Explore a fantastic range of stores, including the Elmsleigh and Two Rivers shopping centres. A monthly farmer's market brings fresh local produce, street food and fine crafts, while a brand new M&S Food Hall is set to open later this year. There's also an array of restaurants, cafés and pubs – don't miss a riverside drink at the 16th-century Swan Hotel – plus a cinema and 24/7 gym.

SWAN HOTEL

TWO RIVERS

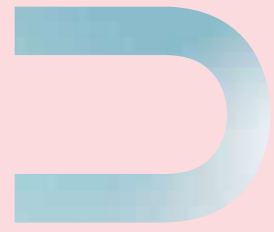


RIVER THAMES, STAINES-UPON-THAMES



ELMSLEIGH SHOPPING CENTRE





Spaces to lift your spirits – and tempo

Part of the famously leafy county of Surrey, Staines-upon-Thames is blessed with gorgeous green spaces ideal for both weekend wandering and heart-pumping sporting pursuits.

Ramble, cycle, fish or horse ride in Colne Valley Park, exploring moors, woodland, rivers and reservoirs. Track down the 2,500 year old Ankerwycke Yew at Runnymede Pleasure Grounds, take to the water at Staines Boat Club, or dust off your running shoes for one of the UK's longest and most scenic towpaths.

STAINES MOORS



STAINES RESERVOIR



LAMMAS RECREATION GROUND





Enjoy an area steeped in heritage and history

Welcome to a place with a rich tapestry of history and culture. Beautiful Windsor, with its world-famous castle and resident queen, is just seven miles away. Get dressed up for Royal Ascot – the most exciting event in the racing calendar – and see if you can spot Queen Elizabeth herself.

Cheer on the boats in the Henley Royal Regatta, find out where the Magna Carta was signed in Runnymede and take a guided tour of fascinating Eton College, alma mater of princes, politicians and Hollywood stars.

S A V O U R



Superb links
by road, rail
and air



With brilliant transport connections, Staines-upon-Thames is conveniently linked to London, the South East, the rest of the UK and the world beyond.

Just 4 minutes' walk away, Staines railway station is served by the South Western Railway line and offers direct services to London Waterloo (in just 35 minutes).

The A30, M25, M3 and M4 are in easy reach, connecting you to the UK's motorway network.



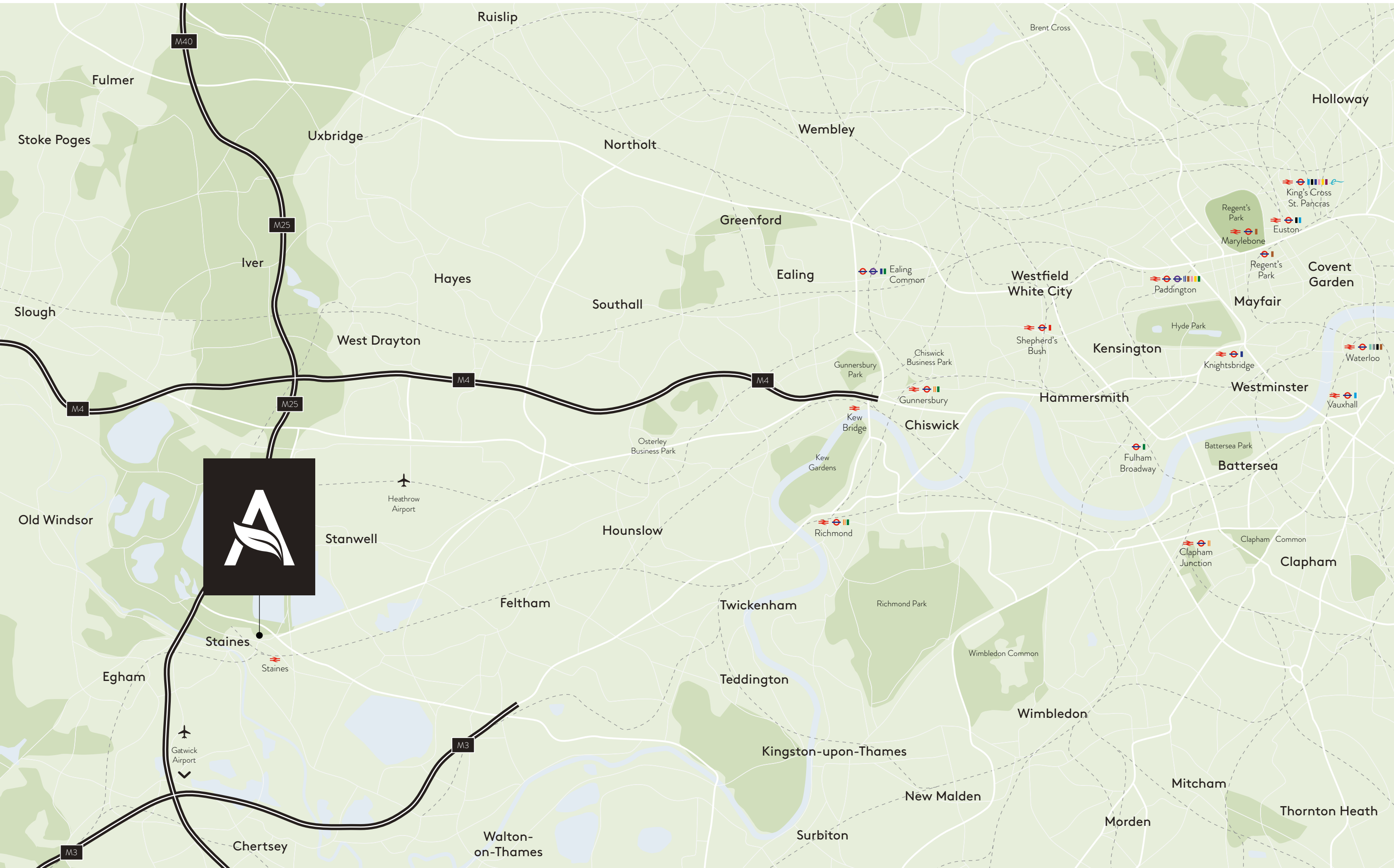
BY ROAD FROM STAINES



BY TRAIN FROM STAINES

- 10min ● Thorpe Park
- 12min ● Heathrow Airport
- 20min ● Twickenham Stadium
- 22min ● Ascot Racecourse
- 22min ● LEGOLAND Windsor Resort
- 27min ● Royal Botanic Gardens, Kew

- 16min ● Richmond
- 19min ● Ascot
- 20min ● Windsor & Eton Riverside
- 23min ● Kew Bridge
- 24min ● Clapham Junction
- 35min ● Waterloo



EXP

The Capital
never felt closer

Whether you're travelling into London for work or pleasure, a home at Ascot House makes it easy to zip into the Capital. Direct trains take only 35 minutes to reach London Waterloo, where the Jubilee, Northern, Bakerloo and Waterloo & City tube lines wait to whisk you across the city.

London Waterloo is also only a stroll from the South Bank, with its enticing mixture of galleries, concert halls, restaurants, bars and riverside pathways.

LORE





Just 12 minutes by car or 13 minutes by bus, London Heathrow is conveniently close to Ascot House. Connecting to 203 cities in 84 countries, Heathrow is truly a global gateway.

The world is waiting

HEATHROW AIRPORT



Fly to the world's most popular business and leisure destinations – New York, Dubai, Amsterdam and Hong Kong to name but a few – with the UK's leading airport on your doorstep.

SPECIFICATION

General

- Amtico flooring in Noble Oak to entrance hall, living, kitchen, dining and bathrooms to one and two bedroom apartments
- Neutral carpets to bedrooms in one and two bedroom apartments
- Amtico flooring in Noble Oak throughout studio apartments
- LED spotlights to entrance hall, living, kitchen, dining and bathrooms
- Pendant lighting to bedrooms
- White emulsion finish with white Satinwood woodwork
- White Dekodor internal doors in white gloss with square mitred lever handles
- Whole house ventilation system
- Underfloor heating throughout
- Video entry system
- SkyQ and TV points to living room and master bedroom linked to a communal Sky dish and aerial
- Balcony with timber decking or paved terrace to all apartments
- Access to private residents podium garden and 9th floor landscaped roof terrace

Bathroom

- Basin with chrome surface-mounted mixer tap
- White bathroom suite with white gloss panels
- Contemporary bath with Provex Lakes hinged bath screen
- Vado bath/shower mixer tap with overhead shower and additional hand shower facility
- Alsacia B Field tiling around bathtub with contrasting texture Kehl B feature tile above bath
- WC with soft close seat and dual flush function
- Wall mounted mirror over vanity unit
- Wall mounted shaver socket
- Heated chrome towel rail

En-suite shower room

- Provex Lakes shower enclosure with sliding door, square contemporary overhead shower and additional hand shower facility
- Alsacia B Field tiling in shower enclosure with contrasting texture Savern B feature tile
- Basin with chrome surface-mounted mixer tap
- WC with soft close seat and dual flush function
- Wall mounted mirror over vanity unit
- Wall mounted shaver socket
- Heated chrome towel rail

Open plan kitchen

- Symphony handleless design kitchen units in white gloss with soft close hinges
- Downlighters under kitchen wall units
- Laminate worktop with matching 150mm upstand
- Stainless steel single bowl integrated basin with chrome single lever mixer tap
- AEG integrated single oven



Computer Generated Images of Ascot House

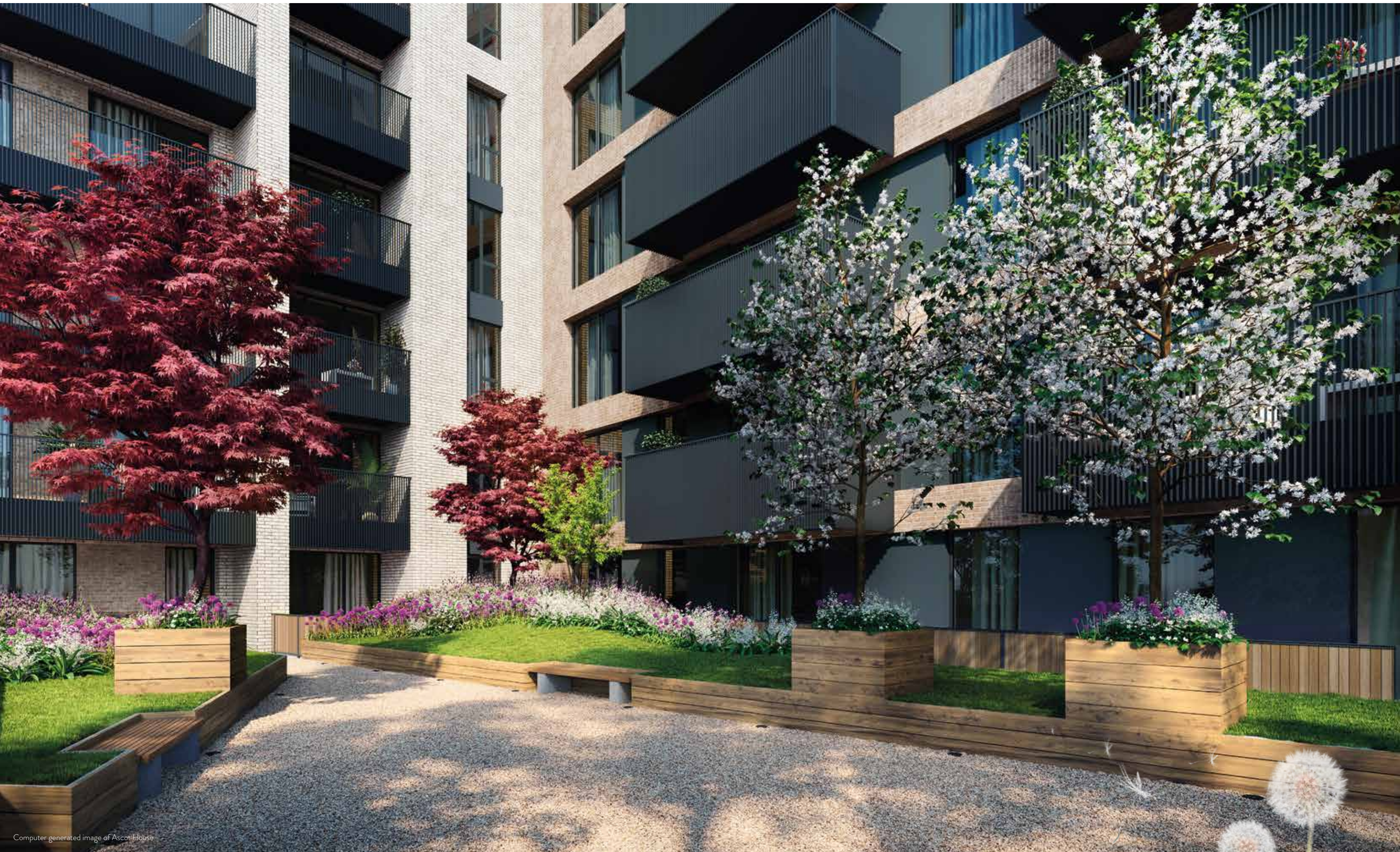
PLOT LOCATORS



SITE PLAN



Private Sale Residential Development



Computer generated image of Ascot House

STUDIO APARTMENT

TYPE 1

PLOT 2



Internal Area Dimensions

Living/Dining/Kitchen	13'1" x 16'7"	4.00m x 5.07m
Bedroom	11'0" x 9'10"	3.37m x 3.00m
Area	421 sq ft	39 sq m

◁ ▷ Measurement Points

ST Store

All areas and dimensions have been taken from architect plans prior to construction therefore whilst the information is believed to be correct its accuracy cannot be guaranteed and does not form part of any contract. They are not intended to be used for carpet sizes or items of furniture. Purchasers must therefore rely on their own inspection to verify any information provided. All dimensions are within + or - 50mm.

Apartment Locators

12th Floor



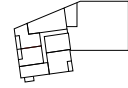
11th Floor



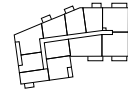
10th Floor



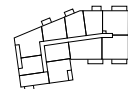
9th Floor



8th Floor



7th Floor



6th Floor



5th Floor



4th Floor



3rd Floor



2nd Floor



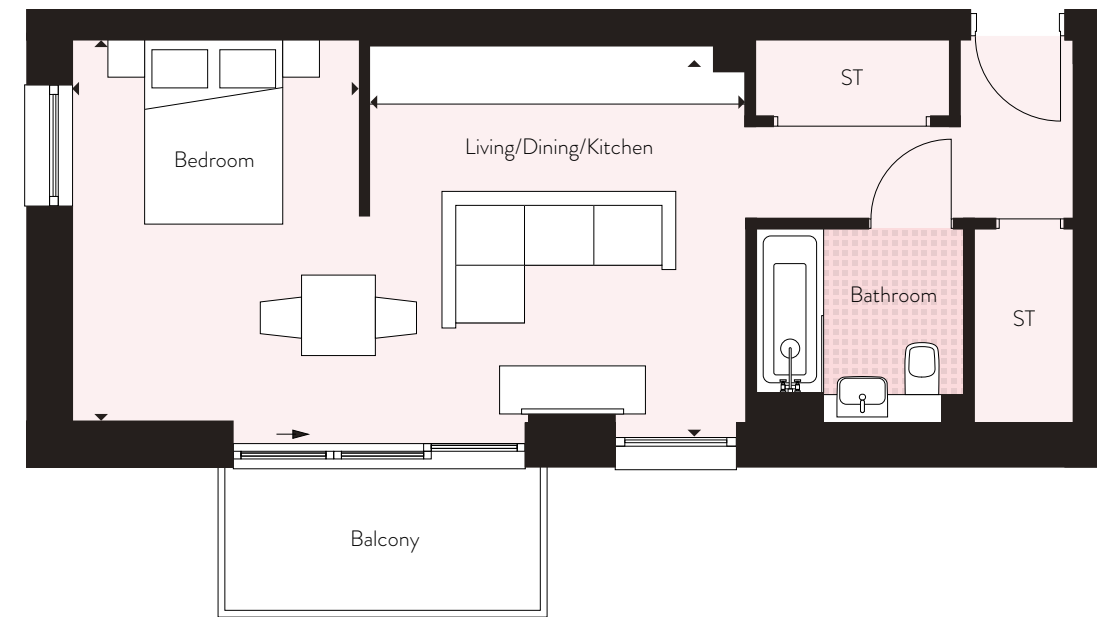
1st Floor



STUDIO APARTMENT

TYPE 2

PLOTS 66, 76, 86, 91, 96 & 101



Internal Area Dimensions

Living/Dining/Kitchen	12'8" x 12'8"	3.88m x 3.88m
Bedroom	9'8" x 12'11"	2.96m x 3.95m
Area	436 sq ft	41 sq m

◁ ▷ Measurement Points

ST Store

All areas and dimensions have been taken from architect plans prior to construction therefore whilst the information is believed to be correct its accuracy cannot be guaranteed and does not form part of any contract. They are not intended to be used for carpet sizes or items of furniture. Purchasers must therefore rely on their own inspection to verify any information provided. All dimensions are within + or - 50mm.

Apartment Locators

12th Floor



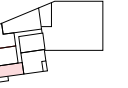
11th Floor



10th Floor



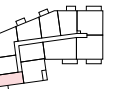
9th Floor



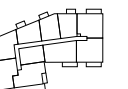
8th Floor



7th Floor



6th Floor



5th Floor



4th Floor



3rd Floor



2nd Floor



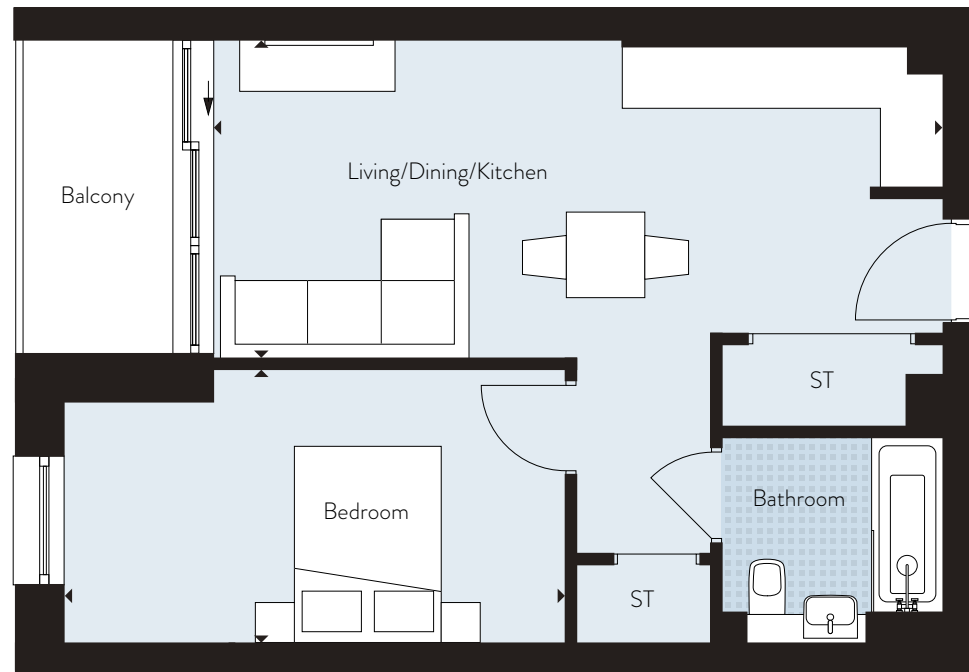
1st Floor



1 BED APARTMENT

TYPE 1

PLOTS 67, 77, 87, 92, 97 & 102



Internal Area Dimensions

Living/Dining/Kitchen	23'1" x 10'1"	7.06m x 3.09m
Bedroom	15'11" x 8'8"	4.86m x 2.65m
Area	482 sq ft	45 sq m

*Please note Plot 67's total area is 478 sq ft (44 sq m)

◁ ▷ Measurement Points

ST Store

All areas and dimensions have been taken from architect plans prior to construction therefore whilst the information is believed to be correct its accuracy cannot be guaranteed and does not form part of any contract. They are not intended to be used for carpet sizes or items of furniture. Purchasers must therefore rely on their own inspection to verify any information provided. All dimensions are within + or - 50mm.

Apartment Locators

12th Floor



11th Floor



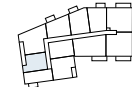
10th Floor



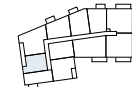
9th Floor



8th Floor



7th Floor



6th Floor



5th Floor



4th Floor



3rd Floor



2nd Floor



1st Floor



1 BED APARTMENT

TYPE 2

PLOTS 6, 17, 28, 39, 50, 59, 69 & 79



Internal Area Dimensions

Living/Dining/Kitchen	14'8" x 18'1"	4.49m x 5.52m
Bedroom	12'0" x 11'3"	3.67m x 3.45m
Area	549 sq ft	51 sq m

◁ ▷ Measurement Points

ST Store

All areas and dimensions have been taken from architect plans prior to construction therefore whilst the information is believed to be correct its accuracy cannot be guaranteed and does not form part of any contract. They are not intended to be used for carpet sizes or items of furniture. Purchasers must therefore rely on their own inspection to verify any information provided. All dimensions are within + or - 50mm.

Apartment Locators

12th Floor



11th Floor



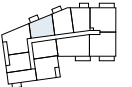
10th Floor



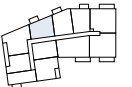
9th Floor



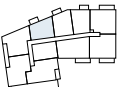
8th Floor



7th Floor



6th Floor



5th Floor



4th Floor



3rd Floor



2nd Floor



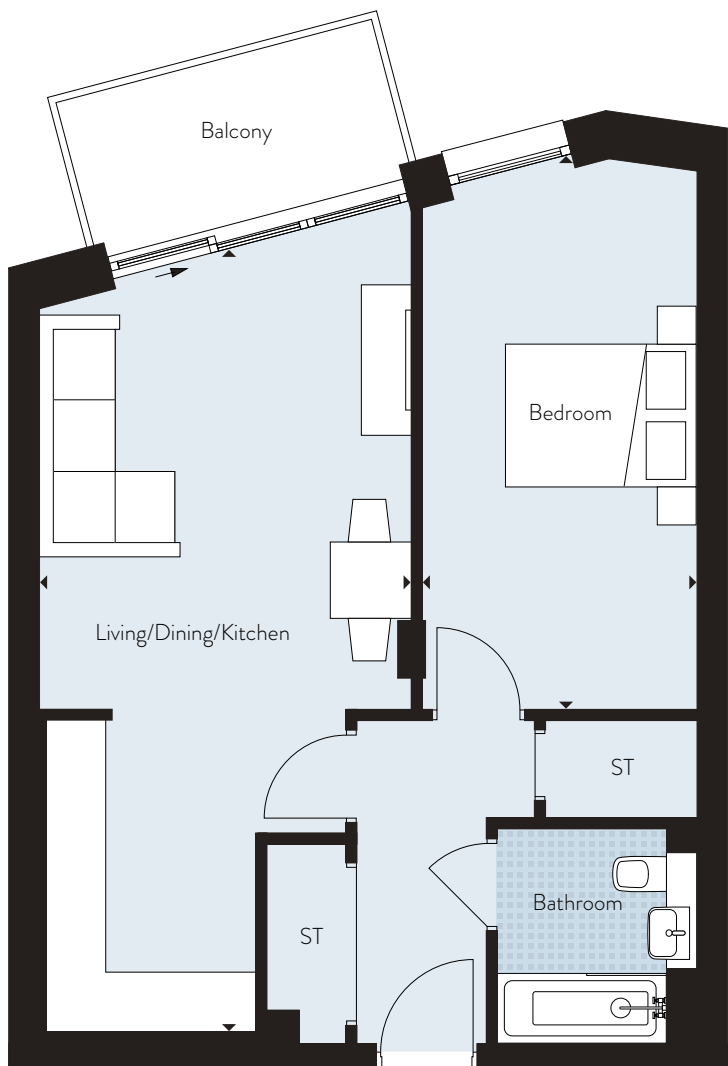
1st Floor



1 BED APARTMENT

TYPE 3

PLOTS 7, 18, 29, 40, 51, 60, 70 & 80



Internal Area Dimensions

Living/Dining/Kitchen	12'2" x 25'3"	3.71m x 7.71m
Bedroom	8'11" x 17'7"	2.74m x 5.38m
Balcony	10'7" x 5'2"	3.25m x 1.58m
Area	577 sq ft	53 sq m

*Please note Plot 7's total area is 549 sq ft (51 sq m)

◁ ▷	Measurement Points
ST	Store

All areas and dimensions have been taken from architect plans prior to construction therefore whilst the information is believed to be correct its accuracy cannot be guaranteed and does not form part of any contract. They are not intended to be used for carpet sizes or items of furniture. Purchasers must therefore rely on their own inspection to verify any information provided. All dimensions are within + or - 50mm.

Apartment Locators

12th Floor



11th Floor



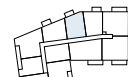
10th Floor



9th Floor



8th Floor



7th Floor



6th Floor



5th Floor



4th Floor



3rd Floor



2nd Floor



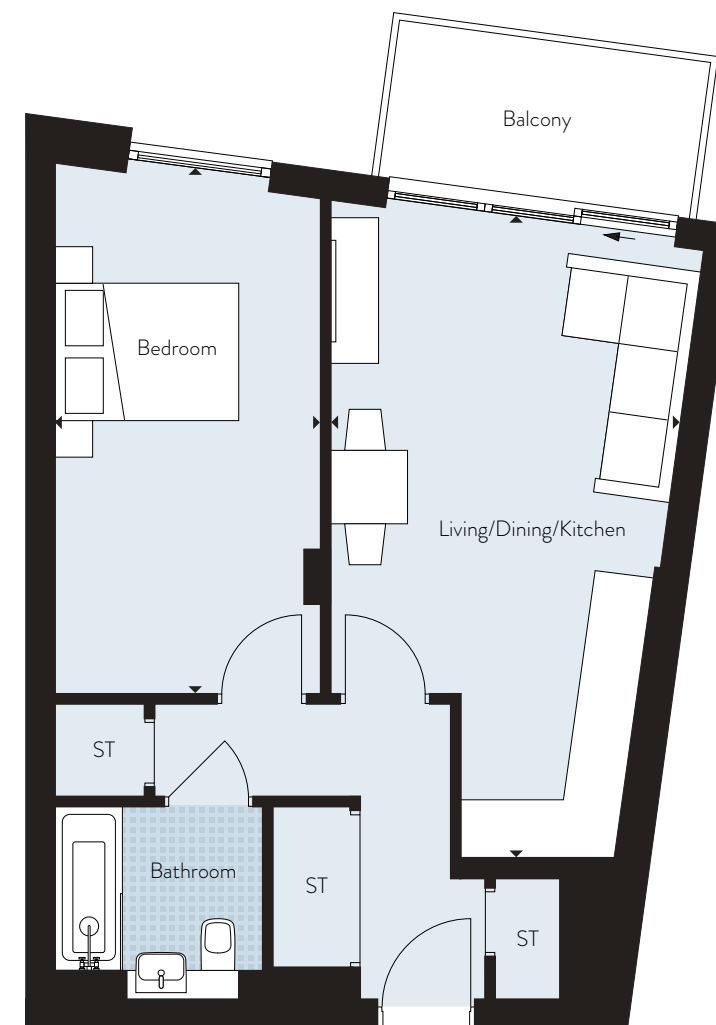
1st Floor



1 BED APARTMENT

TYPE 4

PLOTS 8, 19, 30, 41, 52, 61, 71 & 81



Internal Area Dimensions

Living/Dining/Kitchen	11'10" x 21'5"	3.62m x 6.55m
Bedroom	8'11" x 17'4"	2.74m x 5.30m
Area	549 sq ft	51 sq m

◁ ▷	Measurement Points
ST	Store

All areas and dimensions have been taken from architect plans prior to construction therefore whilst the information is believed to be correct its accuracy cannot be guaranteed and does not form part of any contract. They are not intended to be used for carpet sizes or items of furniture. Purchasers must therefore rely on their own inspection to verify any information provided. All dimensions are within + or - 50mm.

Apartment Locators

12th Floor



11th Floor



10th Floor



9th Floor



8th Floor



7th Floor



6th Floor



5th Floor



4th Floor



3rd Floor



2nd Floor



1st Floor



1 BED APARTMENT

TYPE 5

PLOTS 13, 24, 35 & 46



Internal Area Dimensions

Living/Dining/Kitchen	24'1" x 10'2"	7.36m x 3.12m
Bedroom	10'11" x 12'10"	3.33m x 3.93m
Area	562 sq ft	52 sq m

◁ ▷ Measurement Points

ST Store

All areas and dimensions have been taken from architect plans prior to construction therefore whilst the information is believed to be correct its accuracy cannot be guaranteed and does not form part of any contract. They are not intended to be used for carpet sizes or items of furniture. Purchasers must therefore rely on their own inspection to verify any information provided. All dimensions are within + or - 50mm.

Apartment Locators

12th Floor



11th Floor



10th Floor



9th Floor



8th Floor



7th Floor



6th Floor



5th Floor



4th Floor



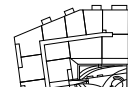
3rd Floor



2nd Floor



1st Floor



1 BED APARTMENT

TYPE 6

PLOT 88



Internal Area Dimensions

Living/Dining/Kitchen	16'2" x 14'11"	4.93m x 4.56m
Bedroom	15'3" x 10'6"	4.65m x 3.22m
Area	520 sq ft	48 sq m

◁ ▷ Measurement Points

ST Store

All areas and dimensions have been taken from architect plans prior to construction therefore whilst the information is believed to be correct its accuracy cannot be guaranteed and does not form part of any contract. They are not intended to be used for carpet sizes or items of furniture. Purchasers must therefore rely on their own inspection to verify any information provided. All dimensions are within + or - 50mm.

Apartment Locators

12th Floor



11th Floor



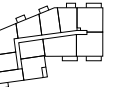
10th Floor



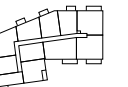
9th Floor



8th Floor



7th Floor



6th Floor



5th Floor



4th Floor



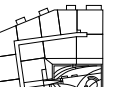
3rd Floor



2nd Floor



1st Floor



1 BED APARTMENT

TYPE 7

PLOTS 94, 99 & 104



Internal Area Dimensions

Living/Dining/Kitchen	14'0" x 21'8"	4.29m x 6.62m
Bedroom	12'8" x 11'5"	3.88m x 3.48m
Area	555 sq ft	52 sq m

◁ ▷ Measurement Points

ST Store

All areas and dimensions have been taken from architect plans prior to construction therefore whilst the information is believed to be correct its accuracy cannot be guaranteed and does not form part of any contract. They are not intended to be used for carpet sizes or items of furniture. Purchasers must therefore rely on their own inspection to verify any information provided. All dimensions are within + or - 50mm.

Apartment Locators

12th Floor



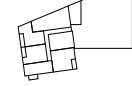
11th Floor



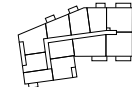
10th Floor



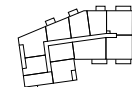
9th Floor



8th Floor



7th Floor



6th Floor



5th Floor



4th Floor



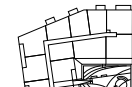
3rd Floor



2nd Floor



1st Floor

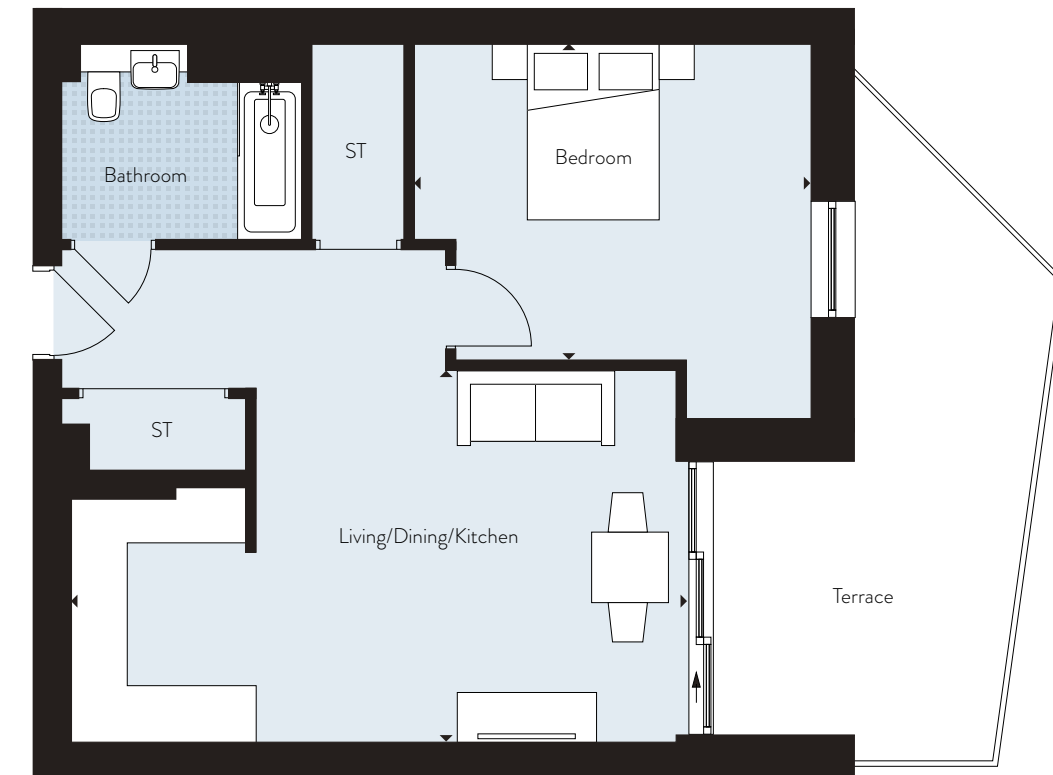


1 BED APARTMENT

TYPE 8

PLOT 1

* WHEELCHAIR ADAPTABLE UNIT



Internal Area Dimensions

Living/Dining/Kitchen	21'6" x 13'1"	6.56m x 4.00m
Bedroom	14'0" x 11'2"	4.28m x 3.40m
Area	611 sq ft	57 sq m

◁ ▷ Measurement Points

ST Store

All areas and dimensions have been taken from architect plans prior to construction therefore whilst the information is believed to be correct its accuracy cannot be guaranteed and does not form part of any contract. They are not intended to be used for carpet sizes or items of furniture. Purchasers must therefore rely on their own inspection to verify any information provided. All dimensions are within + or - 50mm.

Apartment Locators

12th Floor



11th Floor



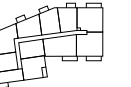
10th Floor



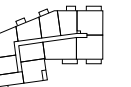
9th Floor



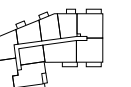
8th Floor



7th Floor



6th Floor



5th Floor



4th Floor



3rd Floor



2nd Floor



1st Floor



1 BED APARTMENT

TYPE 9

PLOTS 12, 23, 34, 45, 65, 75, 85, 90, 95 & 100

* WHEELCHAIR ADAPTABLE UNIT



Internal Area Dimensions

Living/Dining/Kitchen	21'6" x 13'1"	6.56m x 4.00m
Bedroom	14'0" x 11'2"	4.28m x 3.40m
Area	611 sq ft	57 sq m

◁ ▷ Measurement Points

ST Store

All areas and dimensions have been taken from architect plans prior to construction therefore whilst the information is believed to be correct its accuracy cannot be guaranteed and does not form part of any contract. They are not intended to be used for carpet sizes or items of furniture. Purchasers must therefore rely on their own inspection to verify any information provided. All dimensions are within + or - 50mm.

2 BED APARTMENT

TYPE 10

PLOTS 3, 14, 25, 36, & 47

*Reduced ceiling height to Plot 47, please refer to Sales Advisor for details.



Internal Area Dimensions

Living/Dining/Kitchen	25'11" x 10'2"	7.90m x 3.12m
Bedroom 1	13'3" x 10'10"	4.40m x 3.31m
Bedroom 2	12'0" x 6'11"	3.66m x 2.11m
Area	732 sq ft	68 sq m

◁ ▷ Measurement Points

ST Store

All areas and dimensions have been taken from architect plans prior to construction therefore whilst the information is believed to be correct its accuracy cannot be guaranteed and does not form part of any contract. They are not intended to be used for carpet sizes or items of furniture. Purchasers must therefore rely on their own inspection to verify any information provided. All dimensions are within + or - 50mm.

Apartment Locators

12th Floor



11th Floor



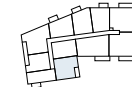
10th Floor



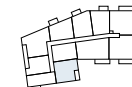
9th Floor



8th Floor



7th Floor



6th Floor



5th Floor



4th Floor



3rd Floor



2nd Floor



1st Floor



Apartment Locators

12th Floor



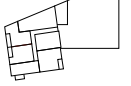
11th Floor



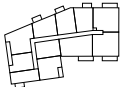
10th Floor



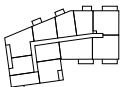
9th Floor



8th Floor



7th Floor



6th Floor



5th Floor



4th Floor



3rd Floor



2nd Floor



1st Floor



2 BED APARTMENT

TYPE 11

PLOTS 4, 15, 26, 37 & 48



Internal Area Dimensions

Living/Dining/Kitchen	23'1" x 12'9"	7.06m x 3.89m
Bedroom 1	14'9" x 9'0"	4.52m x 2.75m
Bedroom 2	14'9" x 8'2"	4.52m x 2.50m
Area	730 sq ft	68 sq m

◁ ▷ Measurement Points

ST Store

All areas and dimensions have been taken from architect plans prior to construction therefore whilst the information is believed to be correct its accuracy cannot be guaranteed and does not form part of any contract. They are not intended to be used for carpet sizes or items of furniture. Purchasers must therefore rely on their own inspection to verify any information provided. All dimensions are within + or - 50mm.

Apartment Locators

12th Floor



11th Floor



10th Floor



9th Floor



8th Floor



7th Floor



6th Floor



5th Floor



4th Floor



3rd Floor



2nd Floor



1st Floor



2 BED APARTMENT

TYPE 12

PLOTS 5, 16, 27, 38, 49, 58, 68, 78, 93, 98 & 103



Internal Area Dimensions

Living/Dining/Kitchen	22'10" x 13'8"	6.98m x 4.18m
Bedroom 1	12'6" x 11'6"	3.81m x 3.52m
Bedroom 2	15'1" x 12'2"	4.62m x 3.72m
Area	783 sq ft	73 sq m

◁ ▷ Measurement Points

ST Store

All areas and dimensions have been taken from architect plans prior to construction therefore whilst the information is believed to be correct its accuracy cannot be guaranteed and does not form part of any contract. They are not intended to be used for carpet sizes or items of furniture. Purchasers must therefore rely on their own inspection to verify any information provided. All dimensions are within + or - 50mm.

Apartment Locators

12th Floor



11th Floor



10th Floor



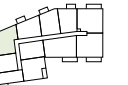
9th Floor



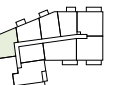
8th Floor



7th Floor



6th Floor



5th Floor



4th Floor



3rd Floor



2nd Floor



1st Floor



2 BED APARTMENT

TYPE 13

PLOTS 9, 20, 31, 42, 53, 62, 72 & 82



Internal Area Dimensions

Living/Dining/Kitchen	27'9" x 10'6"	8.48m x 3.22m
Bedroom 1	9'0" x 17'8"	2.75m x 5.39m
Bedroom 2	8'11" x 13'2"	2.74m x 4.03m
Area	766 sq ft	71 sq m

◁ ▷ Measurement Points

ST Store

All areas and dimensions have been taken from architect plans prior to construction therefore whilst the information is believed to be correct its accuracy cannot be guaranteed and does not form part of any contract. They are not intended to be used for carpet sizes or items of furniture. Purchasers must therefore rely on their own inspection to verify any information provided. All dimensions are within + or - 50mm.

Apartment Locators

12th Floor



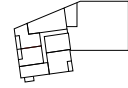
11th Floor



10th Floor



9th Floor



8th Floor



7th Floor



6th Floor



5th Floor



4th Floor



3rd Floor



2nd Floor



1st Floor



2 BED APARTMENT

TYPE 14

PLOT 10



Internal Area Dimensions

Living/Dining/Kitchen	11'4" x 27'5"	3.49m x 8.36m
Bedroom 1	8'11" x 19'1"	2.74m x 5.84m
Bedroom 2	9'0" x 13'6"	2.75m x 4.13m
Area	774 sq ft	72 sq m

◁ ▷ Measurement Points

ST Store

All areas and dimensions have been taken from architect plans prior to construction therefore whilst the information is believed to be correct its accuracy cannot be guaranteed and does not form part of any contract. They are not intended to be used for carpet sizes or items of furniture. Purchasers must therefore rely on their own inspection to verify any information provided. All dimensions are within + or - 50mm.

Apartment Locators

12th Floor



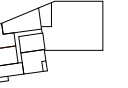
11th Floor



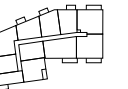
10th Floor



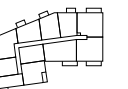
9th Floor



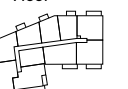
8th Floor



7th Floor



6th Floor



5th Floor



4th Floor



3rd Floor



2nd Floor



1st Floor



2 BED APARTMENT

TYPE 15

PLOTS 21, 32, 43, 54, 63, 73 & 83



Internal Area Dimensions

Living/Dining/Kitchen	11'4" x 27'5"	3.49m x 8.36m
Bedroom 1	8'11" x 19'1"	2.74m x 5.84m
Bedroom 2	9'0" x 13'6"	2.75m x 4.13m
Area	774 sq ft	72 sq m

◁ ▷ Measurement Points

ST Store

All areas and dimensions have been taken from architect plans prior to construction therefore whilst the information is believed to be correct its accuracy cannot be guaranteed and does not form part of any contract. They are not intended to be used for carpet sizes or items of furniture. Purchasers must therefore rely on their own inspection to verify any information provided. All dimensions are within + or - 50mm.

Apartment Locators

12th Floor



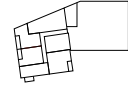
11th Floor



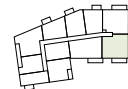
10th Floor



9th Floor



8th Floor



7th Floor



6th Floor



5th Floor



4th Floor



3rd Floor



2nd Floor



1st Floor



2 BED APARTMENT

TYPE 16

PLOT 11



Internal Area Dimensions

Living/Dining/Kitchen	12'9" x 23'3"	3.90m x 7.02m
Bedroom 1	13'9" x 13'3"	4.21m x 4.04m
Bedroom 2	10'1" x 14'11"	3.08m x 4.56m
Area	820 sq ft	76 sq m

◁ ▷ Measurement Points

ST Store

All areas and dimensions have been taken from architect plans prior to construction therefore whilst the information is believed to be correct its accuracy cannot be guaranteed and does not form part of any contract. They are not intended to be used for carpet sizes or items of furniture. Purchasers must therefore rely on their own inspection to verify any information provided. All dimensions are within + or - 50mm.

Apartment Locators

12th Floor



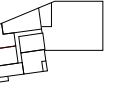
11th Floor



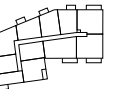
10th Floor



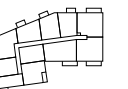
9th Floor



8th Floor



7th Floor



6th Floor



5th Floor



4th Floor



3rd Floor



2nd Floor



1st Floor



2 BED APARTMENT

TYPE 17

PLOTS 22, 33, 44, 55, 64, 74, 84



Internal Area Dimensions

Living/Dining/Kitchen	12'9" x 23'1"	3.91m x 7.04m
Bedroom 1	13'11" x 13'4"	4.26m x 4.07m
Bedroom 2	10'1" x 14'11"	3.08m x 4.56m
Area	820 sq ft	76 sq m

◁ ▷ Measurement Points

ST Store

All areas and dimensions have been taken from architect plans prior to construction therefore whilst the information is believed to be correct its accuracy cannot be guaranteed and does not form part of any contract. They are not intended to be used for carpet sizes or items of furniture. Purchasers must therefore rely on their own inspection to verify any information provided. All dimensions are within + or - 50mm.

Apartment Locators

12th Floor



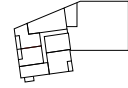
11th Floor



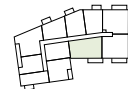
10th Floor



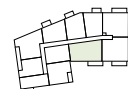
9th Floor



8th Floor



7th Floor



6th Floor



5th Floor



4th Floor



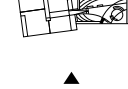
3rd Floor



2nd Floor



1st Floor



2 BED APARTMENT

TYPE 18

PLOT 56



Internal Area Dimensions

Living/Dining/Kitchen	21'6" x 14'2"	6.57m x 4.32m
Bedroom 1	12'3" x 10'4"	3.78m x 3.15m
Bedroom 2	12'2" x 12'10"	3.17m x 3.92m
Area	791 sq ft	74 sq m

◁ ▷ Measurement Points

ST Store

All areas and dimensions have been taken from architect plans prior to construction therefore whilst the information is believed to be correct its accuracy cannot be guaranteed and does not form part of any contract. They are not intended to be used for carpet sizes or items of furniture. Purchasers must therefore rely on their own inspection to verify any information provided. All dimensions are within + or - 50mm.

Apartment Locators

12th Floor



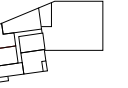
11th Floor



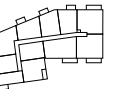
10th Floor



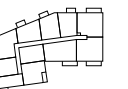
9th Floor



8th Floor



7th Floor



6th Floor



5th Floor



4th Floor



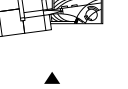
3rd Floor



2nd Floor



1st Floor



2 BED APARTMENT

TYPE 19

PLOT 57



Internal Area Dimensions

Living/Dining/Kitchen	22'8" x 13'0"	6.93m x 3.97m
Bedroom 1	15'2" x 10'1"	4.63m x 3.09m
Bedroom 2	13'10" x 9'8"	4.22m x 2.84m
Area	804 sq ft	75 sq m

◁ ▷ Measurement Points

ST Store

All areas and dimensions have been taken from architect plans prior to construction therefore whilst the information is believed to be correct its accuracy cannot be guaranteed and does not form part of any contract. They are not intended to be used for carpet sizes or items of furniture. Purchasers must therefore rely on their own inspection to verify any information provided. All dimensions are within + or - 50mm.

Apartment Locators

12th Floor



11th Floor



10th Floor



9th Floor



8th Floor



7th Floor



6th Floor



5th Floor



4th Floor



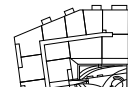
3rd Floor



2nd Floor



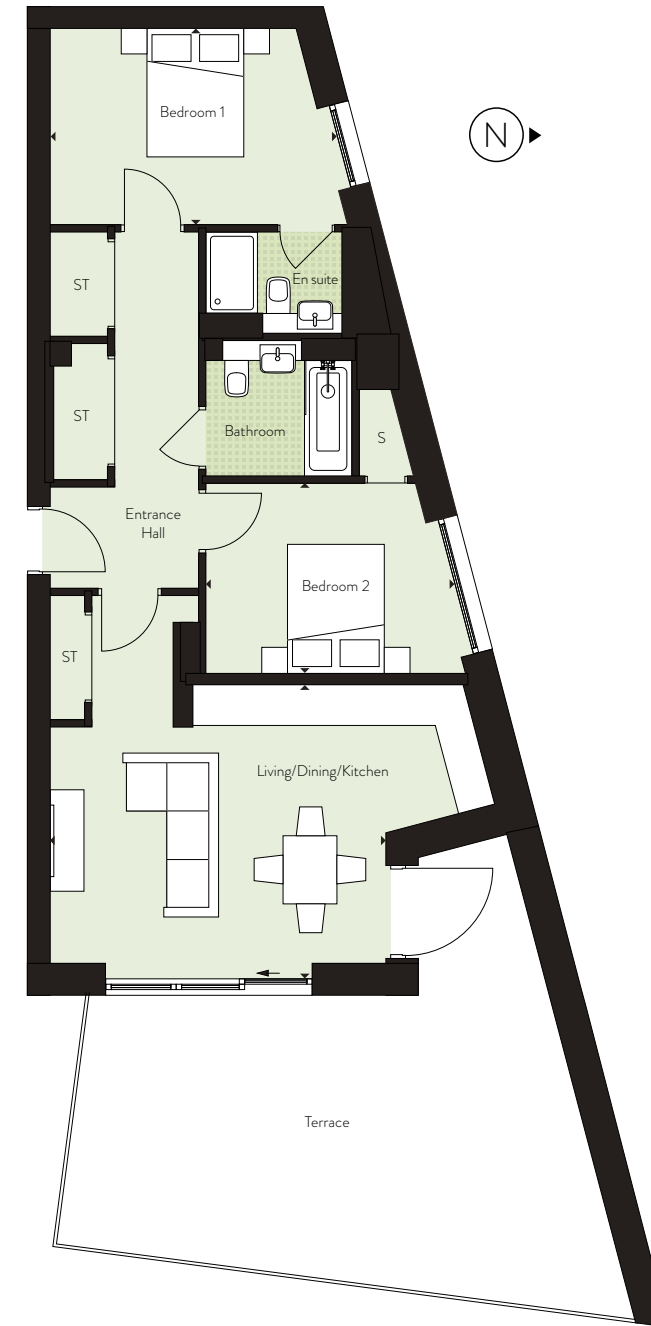
1st Floor



2 BED APARTMENT

TYPE 20

PLOT 89



Internal Area Dimensions

Living/Dining/Kitchen	13'4" x 16'2"	4.08m x 4.94m
Bedroom 1	9'5" x 13'2"	2.89m x 4.03m
Bedroom 2	9'2" x 11'4"	2.80m x 3.47m
Area	760 sq ft	71 sq m

◁ ▷ Measurement Points

ST Store

All areas and dimensions have been taken from architect plans prior to construction therefore whilst the information is believed to be correct its accuracy cannot be guaranteed and does not form part of any contract. They are not intended to be used for carpet sizes or items of furniture. Purchasers must therefore rely on their own inspection to verify any information provided. All dimensions are within + or - 50mm.

Apartment Locators

12th Floor



11th Floor



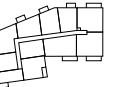
10th Floor



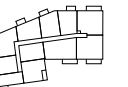
9th Floor



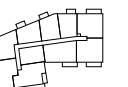
8th Floor



7th Floor



6th Floor



5th Floor



4th Floor



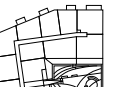
3rd Floor



2nd Floor



1st Floor





Computer generated image of Ascot House



LATIMER
by Clarion Housing Group

WWW.ASCOTHOUSESTAINES.CO.UK
0333 363 8269

IN PARTNERSHIP WITH



**ABOUT CLARION HOUSING GROUP
BUILDING HOMES. DEVELOPING FUTURES.**

With over 100 years' experience of developing and selling new homes, we combine award-winning, well-designed properties with excellent pre-sale and aftercare services. Developing new Shared Ownership homes, we provide options for a range of customers at varying price points.

Clarion Housing Group comprises the largest housing association in the country, with 125,000 homes across more than 170 local authorities. It also includes a charitable foundation, Clarion Futures, and is one of the country's leading housebuilders.



LATIMER
by Clarion Housing Group

WWW.ASCOTHOUSESTAINES.CO.UK