

B

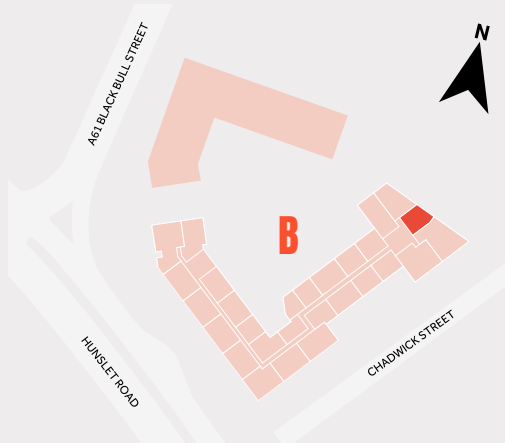
COMPASS POINT EAST

1-BED APARTMENT

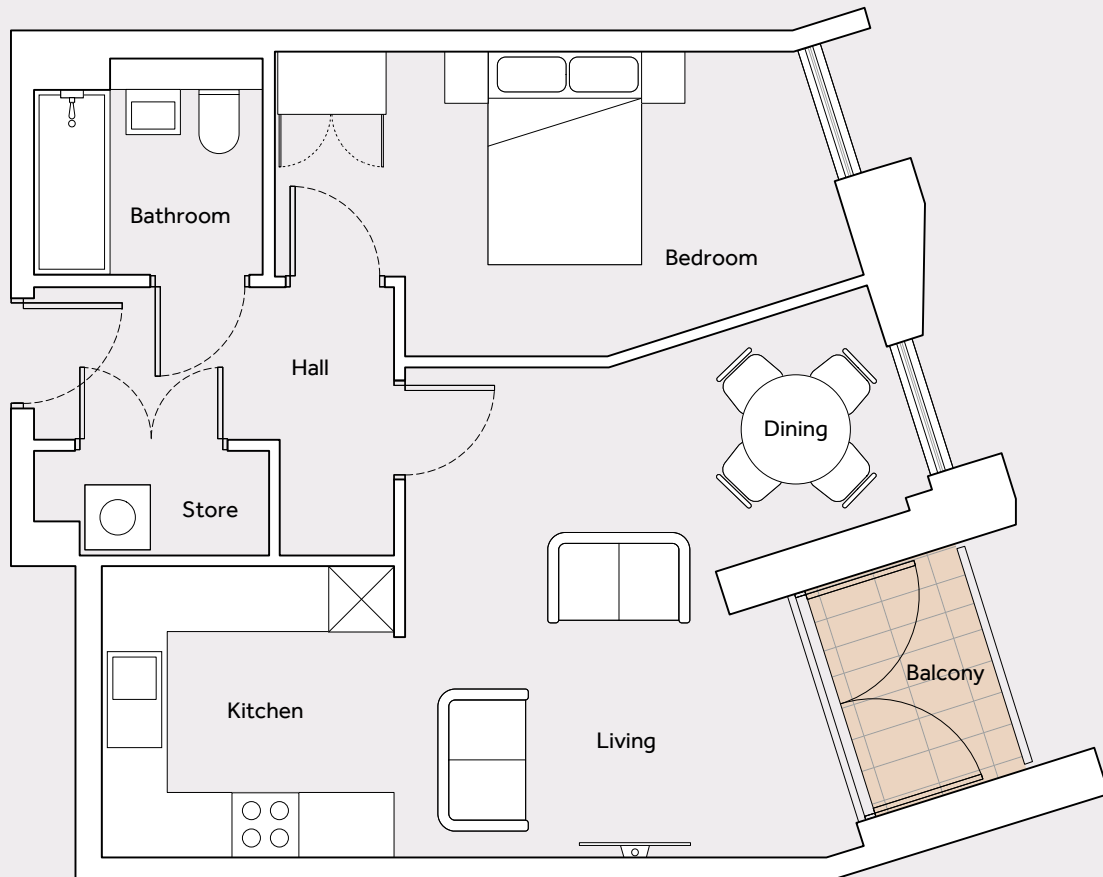
TYPE: B1-04

APARTMENT: E211, E311, E411, E511, E603, E703, E803

FLOORS: 2, 3, 4, 5, 6, 7, 8



Room	Dimensions m
Bedroom	2.79 (max) x 5.41 (max)
Kitchen/Living/Dining	4.88 (max) x 6.99 (max)
Total	53m²



SOUTH BANK

POINTS CROSS

LEEDS

Floorplans are not to scale. Dimensions are indicative only and accurate to within +/- 50mm. They are not intended to be used for carpet sizes, appliance spaces or items of furniture. All dimensions taken to the widest point. Kitchen layouts are indicative. Correct at time of print, August 2022.

 **guinness**
homes