



## Woodpecker Way

50% Share available  
for £167,500





# Woodpecker Way

- 1 bedrooms
- 1 bathroom
- Allocated Parking
- Local amenities nearby

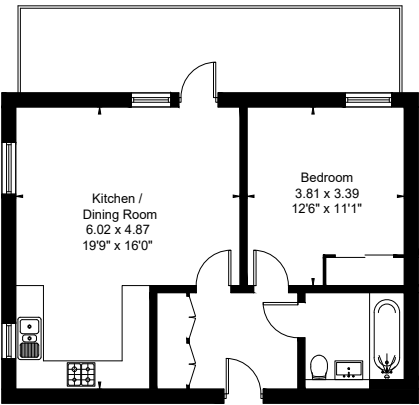
## An excellent one bed apartment in Trumpington, Cambridge

The property boasts a number of key features such as a fully fitted bathroom, a balcony, allocated parking, and an open plan living room and kitchen, featuring integrated appliances including fridgefreezer and dishwasher.

Trumpington is a village and former civil parish to the south of Cambridge, England, bordering Cherry Hinton, Grantchester, Great Shelford, and Little Shelford. The village is an electoral ward of the City of Cambridge and is under three miles from Cambridge city centre.

Domovo has not tested any apparatus, fittings or services and so cannot verify they are in working order. The buyer is advised to obtain verification from their solicitor or surveyor. The floor plan(s) is intended as a guide to the layout of the property. It may not be to scale and should not be relied upon for dimensions or any other purpose.

Approximate Floor Area = 50.6 sq m / 545 sq ft



This floor plan has been drawn in accordance with RICS Property Measurement 2nd edition. All measurements, including the floor area, are approximate and for illustrative purposes only. @fourwalls-group.com 314008



14/03/2023, 14:23

Energy performance certificate (EPC) – Find an energy certificate – GOV.UK

Score	Energy rating	Current	Potential
92+	A		
81-91	B	84   B	84   B
69-80	C		
55-68	D		
39-54	E		
21-38	F		
1-20	G		