



272 The Heart, Walton-On-Thames, KT12 1GB

£120,000 for 40% share

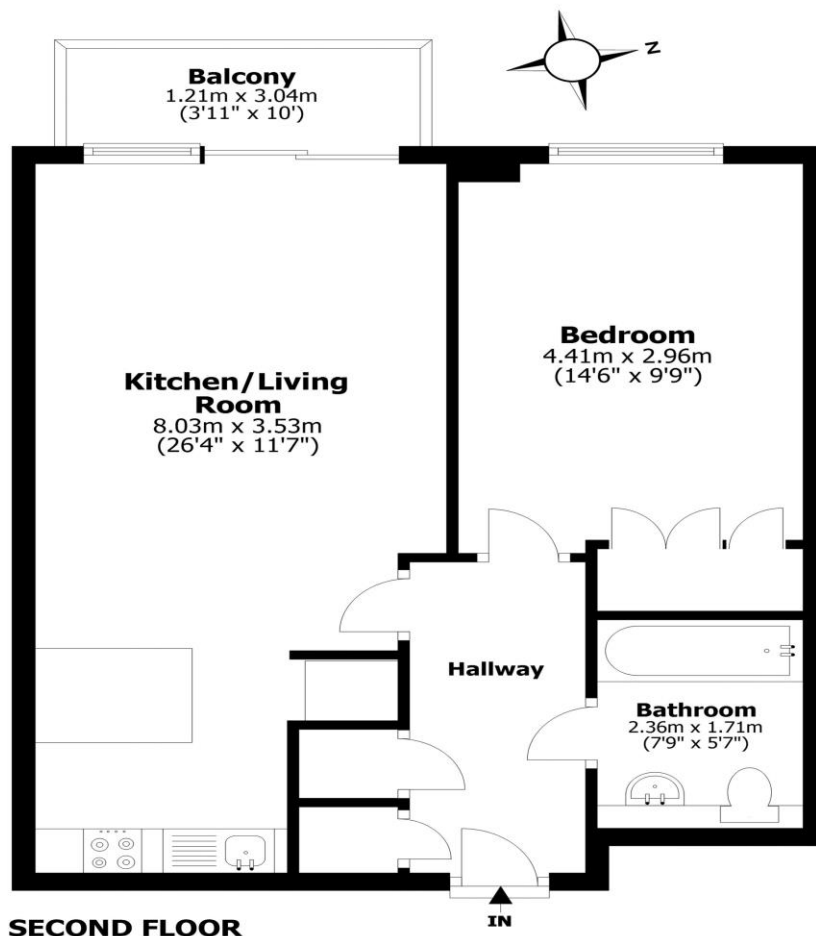




The Heart, Walton on Thames, KT12

Total internal area: approx. 51.8 sq. metres (557.9 sq. feet)

Balcony area: approx. 3.7 sq. metres (39.8 sq. feet)



This floorplan shows maximum dimensions. Measurements are approximate and are given as a guide only. They are not intended to be used for carpet sizes, window furnishings, appliance sizes, or items of furniture.

A shared ownership opportunity - A one-bedroom second floor apartment, well-presented and set in the popular Heart of Walton development. Internally this is a lovely apartment, being on the second floor looking out across the communal garden area and out towards London. The balcony has recently been refurbished and gives highly desired external usable living space. The kitchen is open plan to the living area, with plenty of space for both lounge and dining areas. The bedroom is a good double with built-in wardrobes and the bathroom is modern and fresh. Externally you have an allocated parking space within the blocks underground car park and secure entry system for added peace of mind. The Heart is a popular block with a security centre on site. The Heart is a popular development sitting right in the centre of town. You are literally moments from the shops, coffee shops plus amenities including Sainsburys, Aldi and M&S Foodhall. There is also an Everyman Cinema within the town centre. The River Thames tow path is not far away with a nice selection of pubs on offer. This is an ideal first-time purchase for someone looking to get onto the property ladder.

EPC Rating C.



AGENTS NOTES: These details do not constitute any part of an offer or contract. In issuing them we do not have any authority to give any warranty or representation whatsoever in respect of this property. These details are provided without any responsibility on our part or the part of the vendors. No statements in these details are to be relied upon as representations of fact and purchasers should satisfy themselves by inspection or otherwise as to the accuracy of the statements contained therein.

Equipment: We have not tested the equipment or central heating system mentioned in these particulars and purchasers are advised to satisfy themselves as to their working order and condition.

Measurements: Great care is taken when measuring but measurements should not be relied upon for ordering carpets, equipment, etc.