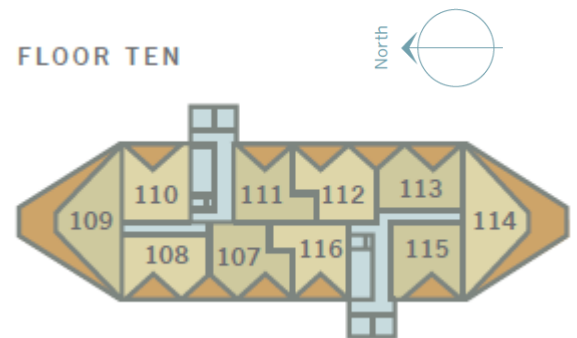
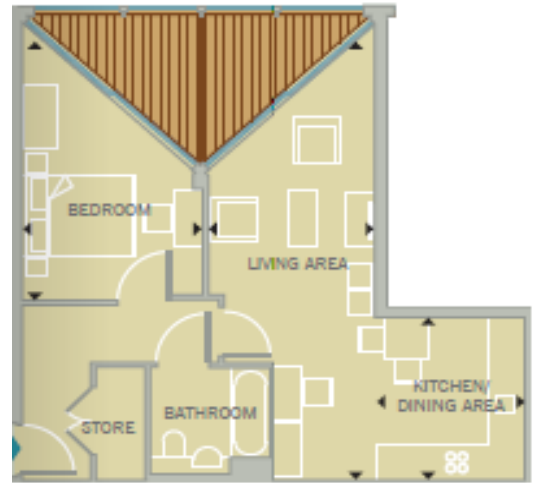


**(Plot 111) Apartment 112, 6 Riverlight Quay, London, SW11 8EB**

 50.40m <sup>2</sup> 543sq <sup>2</sup>	<b>TYPE SIXTEEN</b> <i>Living/ Dining Area</i> <i>Kitchen</i> <i>Bedroom</i>	Plot111 8.50m x 2.96m/ 27' 11" x 9' 9" 3.05m x 2.60m/ 10' 0" x 8' 6" 5.17m x 3.18m/ 17' 0" x 10' 5"
--	---	--



**General features**

- High quality oak wood laminate flooring to hall and living/dining area
- Stone coloured carpets to bedrooms
- Painted interior doors with brushed chrome handles
- Pendant lights throughout living area and bedrooms.
- Entry phone system
- TV - Sky+ & Freeview to living room & Freeview socket to each bedroom
- Telephone points to living room and main bedroom
- Winter Garden to apartment
- Communal cycle storage in basement

**Kitchen**

- Fully fitted designer stone grey kitchens from Manhattan
- Integrated appliances by Hotpoint: Multi-function electric oven, hob, extractor hood, fridge/freezer, dishwasher, & washer/dryer (located in hall cupboard)
- Low energy down lighters
- Oak-finish laminate flooring

**Bathroom**

- Contemporary white bathroom suite with baths
- Duel flush WC with concealed cistern
- Thermostatically controlled shower
- Fitted mirror over wash basin
- Chrome heated towel rail
- Low energy down lighters
- Ceramic tiling to walls and floor