



AT SOUTHALL
WATERSIDE

Bravey House



CLARION
HOUSING

BRAVEY HOUSE

I BEDROOM SUITE

SUITE

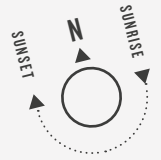
FG-08

TOTAL AREA

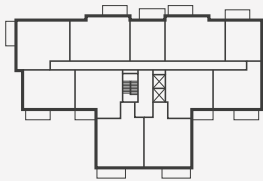
37.3 SQ M 402.0 SQ FT

TERRACE AREA

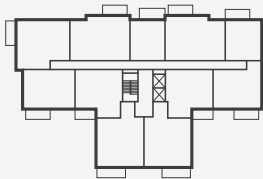
7.1 SQ M 76.4 SQ FT



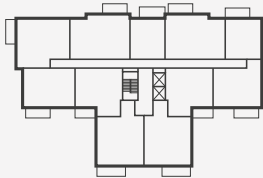
FIFTH FLOOR



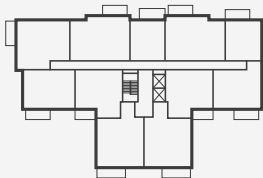
FOURTH FLOOR



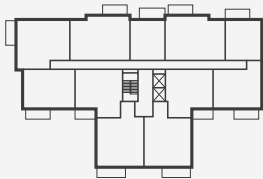
THIRD FLOOR



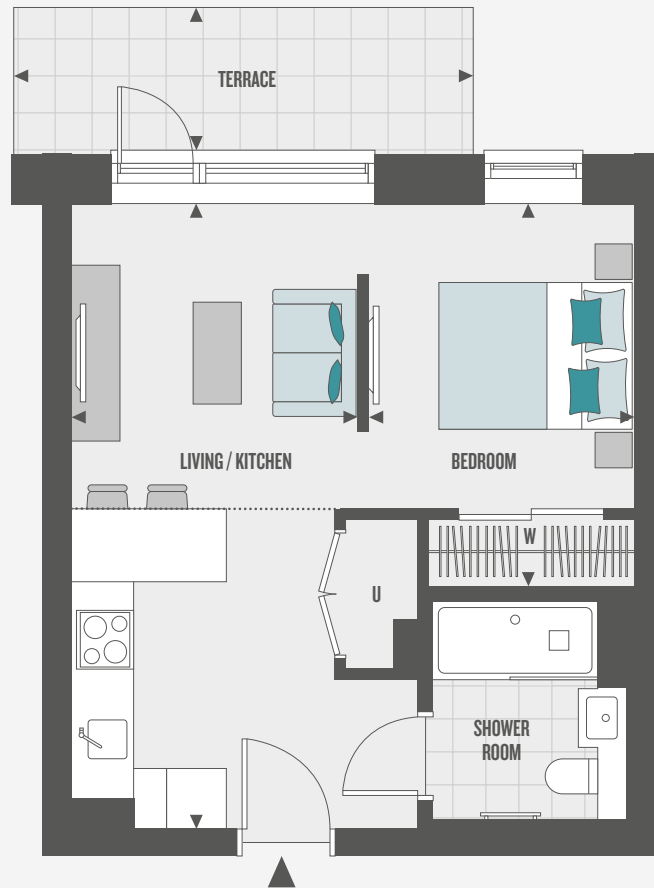
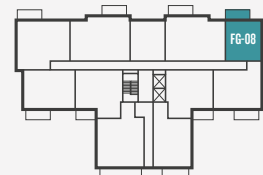
SECOND FLOOR



FIRST FLOOR



GROUND FLOOR



ROOM DIMENSIONS

Living/Kitchen	2.96m x 6.43m	9' 8" x 21' 1"
Bedroom	2.75m x 3.95m	9' 0" x 12' 11"
Terrace	4.73m x 1.50m	15' 6" x 4' 11"

KEY

- ◄► Measurement Points
- W Wardrobe
- C Cupboard
- U Utility Cupboard
- Bulkhead

Floorplans shown for Union Walk are for approximate measurements only. Exact layouts and sizes may vary. All measurements may vary within a tolerance of 5% and are to the maximum room dimensions. The dimensions are not intended to be used for carpet sizes, appliance sizes or items of furniture. Furniture layouts are indicative only. Kitchen layout indicative only. Please ask Sales Executive for further information.



AT SOUTHALL
WATERSIDE

Bravey House



CLARION
HOUSING

BRAVEY HOUSE

1 BEDROOM SUITE

SUITES

F1-07*, F1-09, F2-07*, F2-09, F3-07*, F3-09, F4-07*, F4-09, F5-07* & F5-09

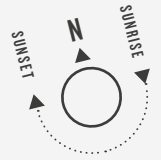
TOTAL AREA

37.3 SQ M 402.0 SQ FT

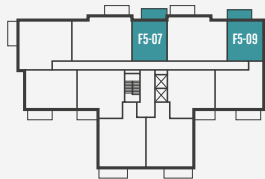
BALCONY AREA

6.0 SQ M 65.2 SQ FT

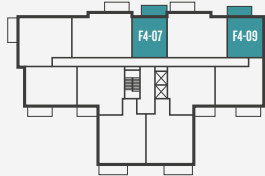
*PLOTS ARE HANDED



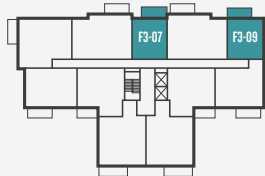
FIFTH FLOOR



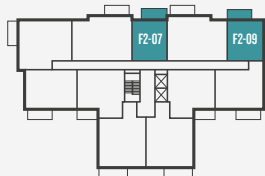
FOURTH FLOOR



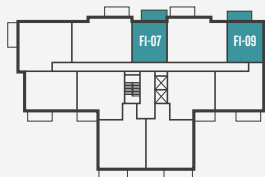
THIRD FLOOR



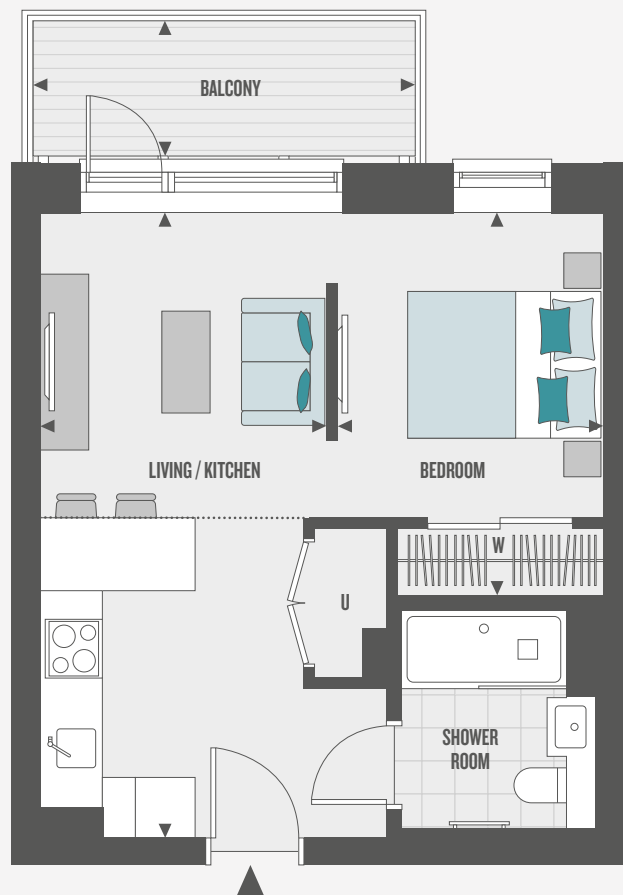
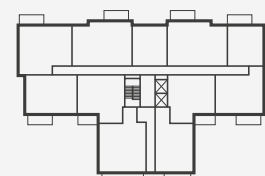
SECOND FLOOR



FIRST FLOOR



GROUND FLOOR



ROOM DIMENSIONS

Living/Kitchen	2.96m x 6.43m	9' 8" x 21' 1"
Bedroom	2.75m x 3.95m	9' 0" x 12' 11"
Balcony	4.04m x 1.50m	13' 3" x 4' 11"

KEY

- ◄► Measurement Points
- W Wardrobe
- C Cupboard
- U Utility Cupboard
- Bulkhead

Floorplans shown for Union Walk are for approximate measurements only. Exact layouts and sizes may vary. All measurements may vary within a tolerance of 5% and are to the maximum room dimensions. The dimensions are not intended to be used for carpet sizes, appliance sizes or items of furniture. Furniture layouts are indicative only. Kitchen layout indicative only. Please ask Sales Executive for further information.



AT SOUTHALL
WATERSIDE

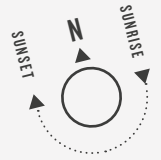
Bravey House



CLARION
HOUSING

BRAVEY HOUSE

1 BEDROOM APARTMENT



APARTMENT

FG-09

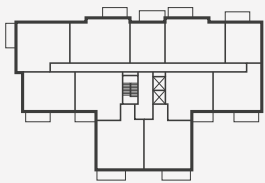
TOTAL AREA

50.2 SQ M 540.6 SQ FT

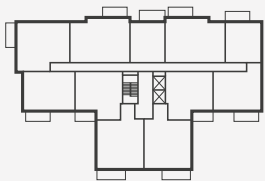
TERRACE AREA

6.2 SQ M 67.7 SQ FT

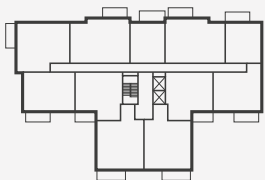
FIFTH FLOOR



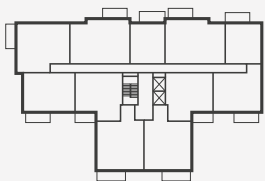
FOURTH FLOOR



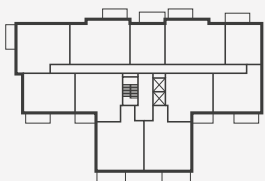
THIRD FLOOR



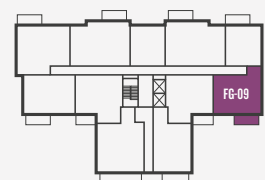
SECOND FLOOR



FIRST FLOOR



GROUND FLOOR



ROOM DIMENSIONS

Kitchen	2.29m x 2.82m	7' 6" x 9' 3"
Living/Dining	4.03m x 4.75m	13' 2" x 15' 7"
Bedroom	3.70m x 3.00m	12' 1" x 9' 10"
Terrace	4.20m x 1.50m	13' 9" x 4' 11"

KEY

- ◄► Measurement Points
- W Wardrobe
- C Cupboard
- U Utility Cupboard

Floorplans shown for Union Walk are for approximate measurements only. Exact layouts and sizes may vary. All measurements may vary within a tolerance of 5% and are to the maximum room dimensions. The dimensions are not intended to be used for carpet sizes, appliance sizes or items of furniture. Furniture layouts are indicative only. Kitchen layout indicative only. Please ask Sales Executive for further information.



AT SOUTHALL
WATERSIDE

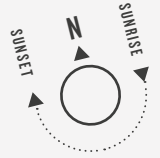
Bravey House



CLARION
HOUSING

BRAVEY HOUSE

I BEDROOM APARTMENT



APARTMENTS

F1-10, F2-10, F3-10,
F4-10 & F5-10

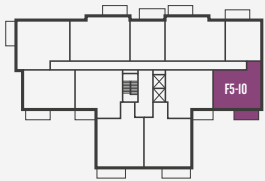
TOTAL AREA

50.2 SQ M 540.6 SQ FT

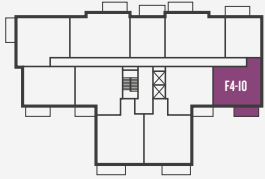
BALCONY AREA

6.0 SQ M 65.2 SQ FT

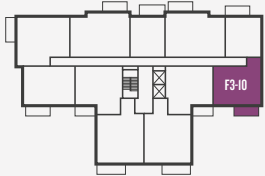
FIFTH FLOOR



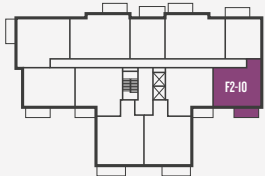
FOURTH FLOOR



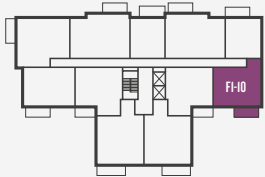
THIRD FLOOR



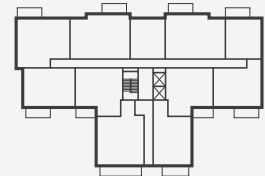
SECOND FLOOR



FIRST FLOOR



GROUND FLOOR



ROOM DIMENSIONS

Kitchen	2.29m x 2.82m	7' 6" x 9' 3"
Living/Dining	4.03m x 4.75m	13' 2" x 15' 7"
Bedroom	3.70m x 3.00m	12' 1" x 9' 10"
Balcony	4.04m x 1.50m	13' 3" x 4' 11"

KEY

- ◄► Measurement Points
- W Wardrobe
- C Cupboard
- U Utility Cupboard

Floorplans shown for Union Walk are for approximate measurements only. Exact layouts and sizes may vary. All measurements may vary within a tolerance of 5% and are to the maximum room dimensions. The dimensions are not intended to be used for carpet sizes, appliance sizes or items of furniture. Furniture layouts are indicative only. Kitchen layout indicative only. Please ask Sales Executive for further information.



AT SOUTHALL
WATERSIDE

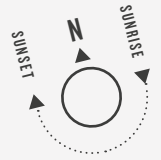
Bravey House



CLARION
HOUSING

BRAVEY HOUSE

I BEDROOM
APARTMENT



APARTMENT

FG-04

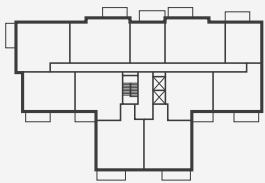
TOTAL AREA

50.6 SQ M 544.7 SQ FT

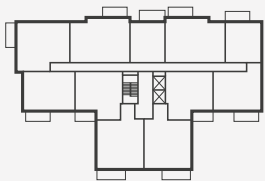
TERRACE AREA

8.0 SQ M 165.2 SQ FT

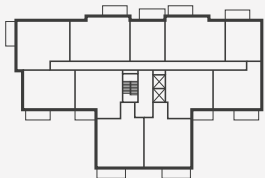
FIFTH FLOOR



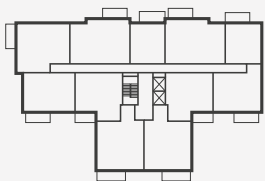
FOURTH FLOOR



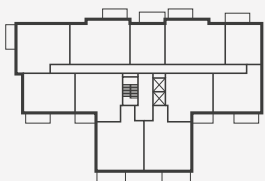
THIRD FLOOR



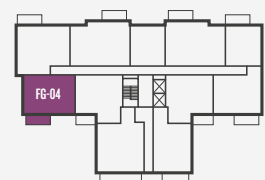
SECOND FLOOR



FIRST FLOOR



GROUND FLOOR



ROOM DIMENSIONS

Kitchen	3.33m x 2.26m	10' 11" x 7' 5"
Living/Dining	4.18m x 3.88m	13' 9" x 12' 8"
Bedroom	3.99m x 3.86m	13' 1" x 12' 8"
Terrace	4.68m x 1.71m	15' 4" x 5' 7"

KEY

- ◄► Measurement Points
- W Wardrobe
- C Cupboard
- U Utility Cupboard

Floorplans shown for Union Walk are for approximate measurements only. Exact layouts and sizes may vary. All measurements may vary within a tolerance of 5% and are to the maximum room dimensions. The dimensions are not intended to be used for carpet sizes, appliance sizes or items of furniture. Furniture layouts are indicative only. Kitchen layout indicative only. Please ask Sales Executive for further information.



AT SOUTHALL
WATERSIDE

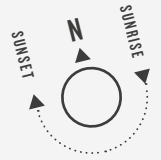
Bravey House



CLARION
HOUSING

BRAVEY HOUSE

I BEDROOM
APARTMENT



APARTMENTS

F1-04, F2-04, F3-04,
F4-04, & F5-04

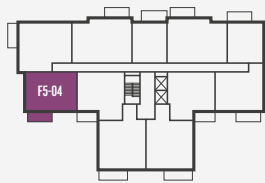
TOTAL AREA

50.6 SQ M 544.7 SQ FT

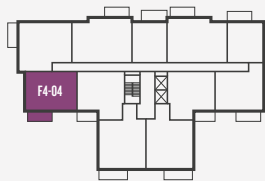
BALCONY AREA

6.0 SQ M 65.2 SQ FT

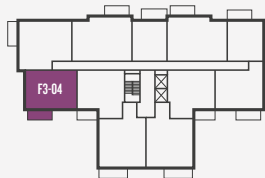
FIFTH FLOOR



FOURTH FLOOR



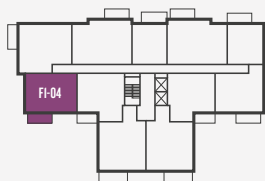
THIRD FLOOR



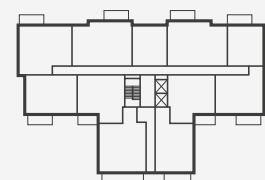
SECOND FLOOR



FIRST FLOOR



GROUND FLOOR



ROOM DIMENSIONS

Kitchen	3.33m x 2.26m	10' 11" x 7' 5"
Living/Dining	4.18m x 3.88m	13' 9" x 12' 8"
Bedroom	3.99m x 3.86m	13' 1" x 12' 8"
Balcony	4.04m x 1.50m	13' 3" x 4' 11"

KEY

- ◄► Measurement Points
- W Wardrobe
- C Cupboard
- U Utility Cupboard

Floorplans shown for Union Walk are for approximate measurements only. Exact layouts and sizes may vary. All measurements may vary within a tolerance of 5% and are to the maximum room dimensions. The dimensions are not intended to be used for carpet sizes, appliance sizes or items of furniture. Furniture layouts are indicative only. Kitchen layout indicative only. Please ask Sales Executive for further information.



AT SOUTHALL
WATERSIDE

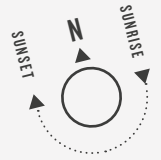
Bravey House



CLARION
HOUSING

BRAVEY HOUSE

I BEDROOM
APARTMENT



APARTMENT

FG-03

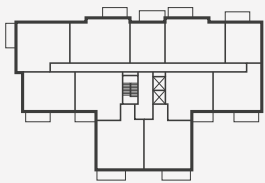
TOTAL AREA

51.6 SQ M 556.0 SQ FT

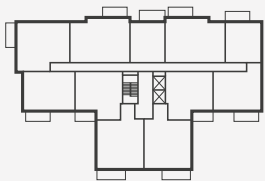
TERRACE AREA

5.1 SQ M 53.8 SQ FT

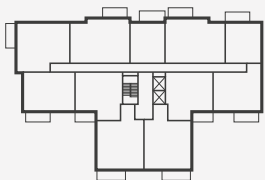
FIFTH FLOOR



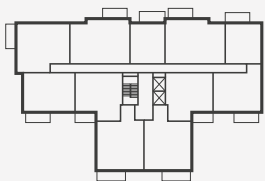
FOURTH FLOOR



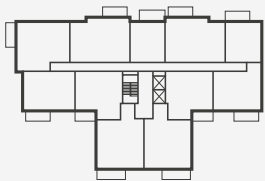
THIRD FLOOR



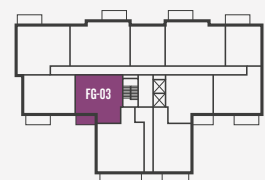
SECOND FLOOR



FIRST FLOOR



GROUND FLOOR



ROOM DIMENSIONS

Kitchen	3.34m x 2.29m	10' 11" x 7' 6"
Living/Dining	4.19m x 3.80m	13' 9" x 12' 6"
Bedroom	2.94m x 4.00m	9' 8" x 13' 1"
Terrace	3.45m x 1.50m	11' 4" x 4' 11"

KEY

- ◄► Measurement Points
- W Wardrobe
- C Cupboard
- U Utility Cupboard

Floorplans shown for Union Walk are for approximate measurements only. Exact layouts and sizes may vary. All measurements may vary within a tolerance of 5% and are to the maximum room dimensions. The dimensions are not intended to be used for carpet sizes, appliance sizes or items of furniture. Furniture layouts are indicative only. Kitchen layout indicative only. Please ask Sales Executive for further information.



AT SOUTHALL
WATERSIDE

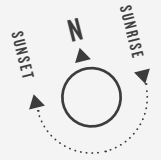
Bravey House



CLARION
HOUSING

BRAVEY HOUSE

1 BEDROOM APARTMENT



APARTMENTS

F1-03, F2-03, F3-03,
F4-03 & F5-03

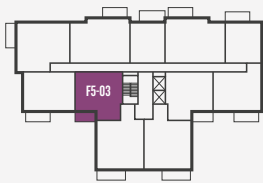
TOTAL AREA

51.6 SQ M 556.0 SQ FT

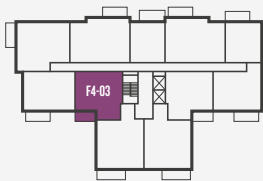
BALCONY AREA

5.0 SQ M 53.8 SQ FT

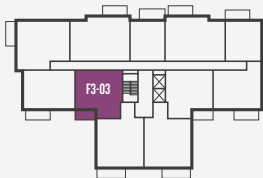
FIFTH FLOOR



FOURTH FLOOR



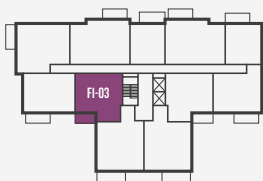
THIRD FLOOR



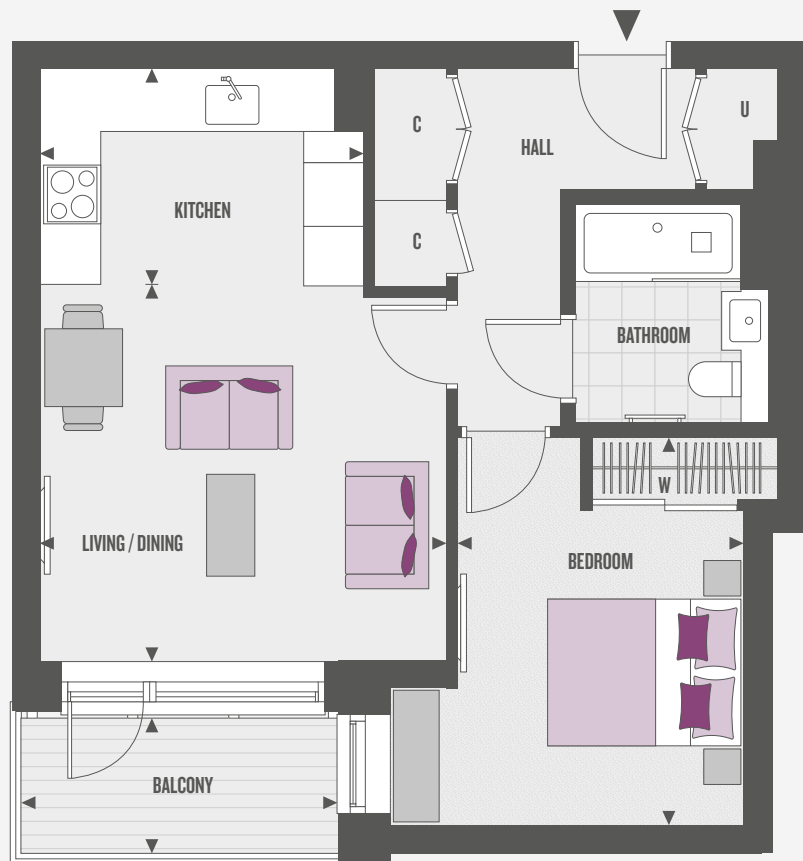
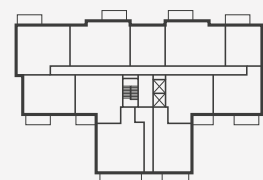
SECOND FLOOR



FIRST FLOOR



GROUND FLOOR



ROOM DIMENSIONS

Kitchen	3.34m x 2.29m	10' 11" x 7' 6"
Living/Dining	4.19m x 3.80m	13' 9" x 12' 6"
Bedroom	2.94m x 4.00m	9' 8" x 13' 1"
Balcony	3.33m x 1.50m	10' 11" x 4' 11"

KEY

- ◄► Measurement Points
- W Wardrobe
- C Cupboard
- U Utility Cupboard

Floorplans shown for Union Walk are for approximate measurements only. Exact layouts and sizes may vary. All measurements may vary within a tolerance of 5% and are to the maximum room dimensions. The dimensions are not intended to be used for carpet sizes, appliance sizes or items of furniture. Furniture layouts are indicative only. Kitchen layout indicative only. Please ask Sales Executive for further information.



AT SOUTHALL
WATERSIDE

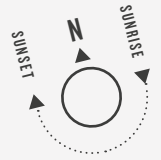
Bravey House



CLARION
HOUSING

BRAVEY HOUSE

I BEDROOM
APARTMENT



APARTMENT

FG-10

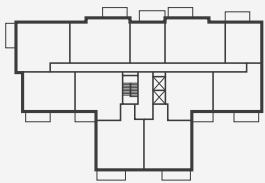
TOTAL AREA

51.9 SQ M 559.5 SQ FT

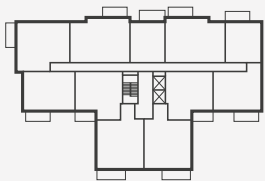
TERRACE AREA

5.0 SQ M 54.1 SQ FT

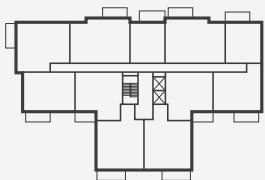
FIFTH FLOOR



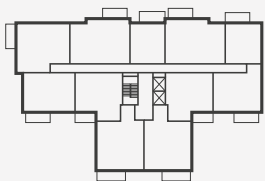
FOURTH FLOOR



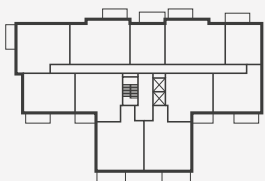
THIRD FLOOR



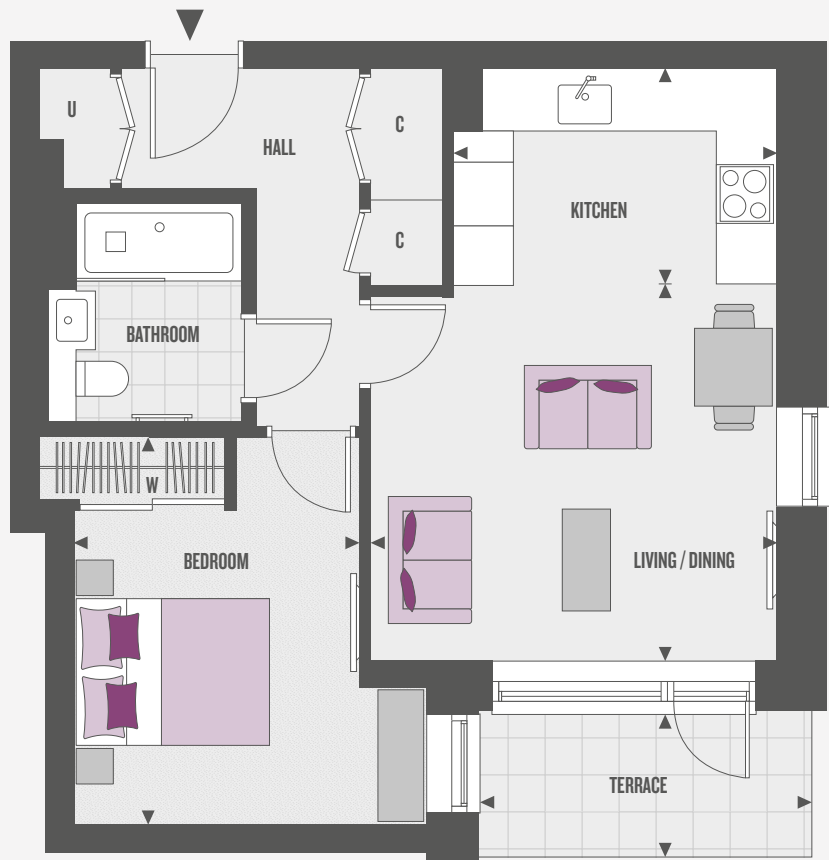
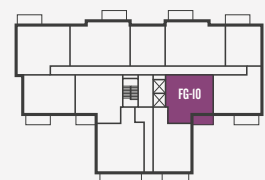
SECOND FLOOR



FIRST FLOOR



GROUND FLOOR



ROOM DIMENSIONS

Kitchen	3.36m x 2.29m	11' 0" x 7' 6"
Living/Dining	4.21m x 3.80m	13' 10" x 12' 6"
Bedroom	2.96m x 4.00m	9' 8" x 13' 1"
Terrace	3.35m x 1.50m	11' 0" x 4' 11"

KEY

- ◀▶ Measurement Points
- W Wardrobe
- C Cupboard
- U Utility Cupboard

Floorplans shown for Union Walk are for approximate measurements only. Exact layouts and sizes may vary. All measurements may vary within a tolerance of 5% and are to the maximum room dimensions. The dimensions are not intended to be used for carpet sizes, appliance sizes or items of furniture. Furniture layouts are indicative only. Kitchen layout indicative only. Please ask Sales Executive for further information.



AT SOUTHALL
WATERSIDE

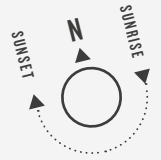
Bravey House



CLARION
HOUSING

BRAVEY HOUSE

I BEDROOM APARTMENT



APARTMENTS

F1-II, F2-II, F3-II,
F4-II & F5-II

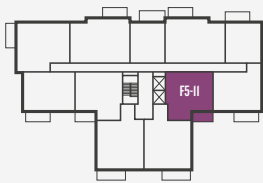
TOTAL AREA

51.9 SQ M 559.5 SQ FT

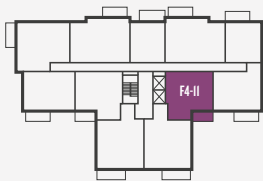
BALCONY AREA

5.0 SQ M 53.8 SQ FT

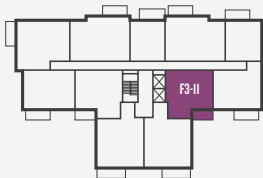
FIFTH FLOOR



FOURTH FLOOR



THIRD FLOOR



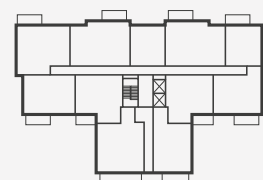
SECOND FLOOR



FIRST FLOOR



GROUND FLOOR



ROOM DIMENSIONS

Kitchen	3.36m x 2.29m	11' 0" x 7' 6"
Living/Dining	4.21m x 3.80m	13' 10" x 12' 6"
Bedroom	2.96m x 4.00m	9' 8" x 13' 1"
Balcony	3.33m x 1.50m	10' 11" x 4' 11"

KEY

- ◀▶ Measurement Points
- W Wardrobe
- C Cupboard
- U Utility Cupboard

Floorplans shown for Union Walk are for approximate measurements only. Exact layouts and sizes may vary. All measurements may vary within a tolerance of 5% and are to the maximum room dimensions. The dimensions are not intended to be used for carpet sizes, appliance sizes or items of furniture. Furniture layouts are indicative only. Kitchen layout indicative only. Please ask Sales Executive for further information.



AT SOUTHALL
WATERSIDE

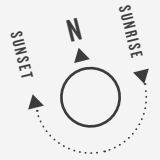
Bravey House



CLARION
HOUSING

BRAVEY HOUSE

I BEDROOM
APARTMENT



APARTMENT

FG-01

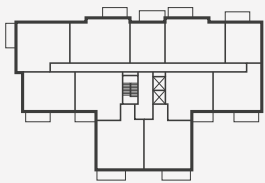
TOTAL AREA

53.1 SQ M 571.6 SQ FT

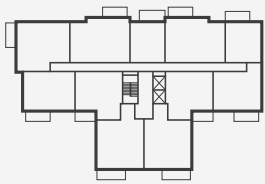
BALCONY AREA

8.9 SQ M 96.5 SQ FT

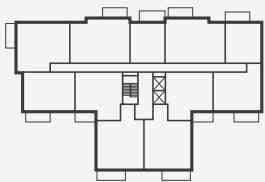
FIFTH FLOOR



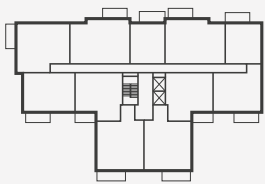
FOURTH FLOOR



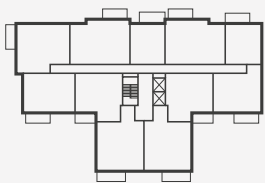
THIRD FLOOR



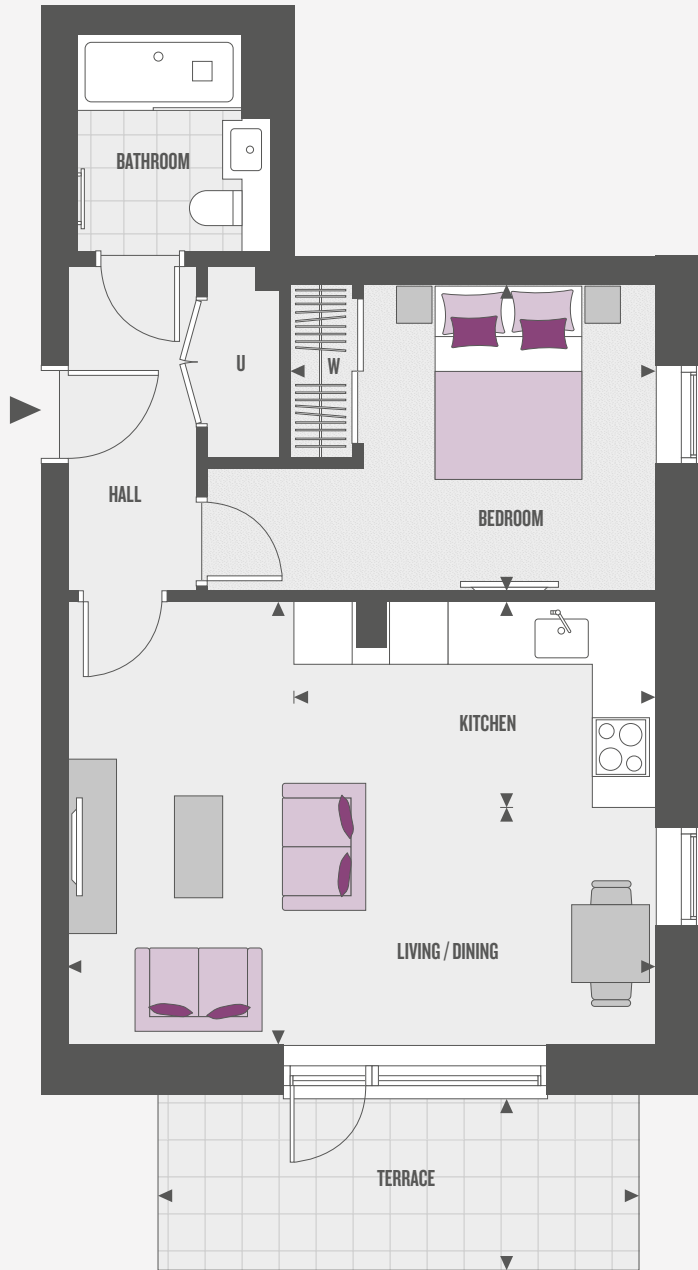
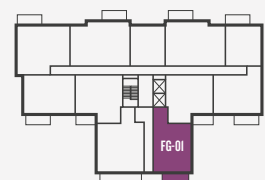
SECOND FLOOR



FIRST FLOOR



GROUND FLOOR



ROOM DIMENSIONS

Kitchen	3.73m x 2.12m	12' 2" x 10' 4"
Living/Dining	6.04m x 4.56m	19' 10" x 14' 11"
Bedroom	3.74m x 3.16m	12' 3" x 10' 4"
Terrace	4.94m x 1.82m	16' 2" x 5' 11"

KEY

- ◄► Measurement Points
- W Wardrobe
- C Cupboard
- U Utility Cupboard

Floorplans shown for Union Walk are for approximate measurements only. Exact layouts and sizes may vary. All measurements may vary within a tolerance of 5% and are to the maximum room dimensions. The dimensions are not intended to be used for carpet sizes, appliance sizes or items of furniture. Furniture layouts are indicative only. Kitchen layout indicative only. Please ask Sales Executive for further information.



AT SOUTHALL
WATERSIDE

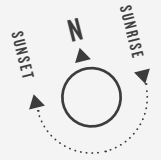
Bravey House



CLARION
HOUSING

BRAVEY HOUSE

2 BEDROOM APARTMENT



APARTMENT

FG-05

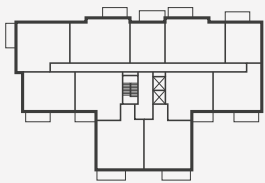
TOTAL AREA

61.5 SQ M 662.4 SQ FT

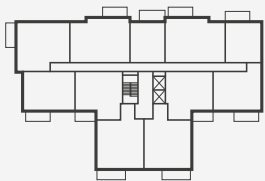
TERRACE AREA

9.6 SQ M 65.2 SQ FT

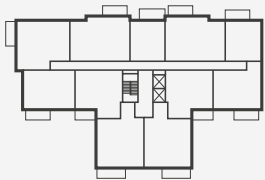
FIFTH FLOOR



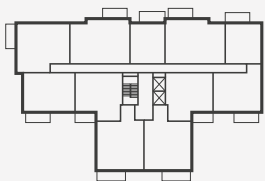
FOURTH FLOOR



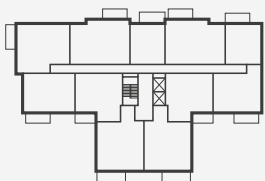
THIRD FLOOR



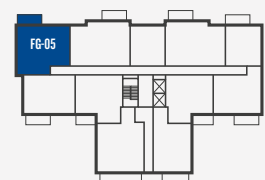
SECOND FLOOR



FIRST FLOOR



GROUND FLOOR



ROOM DIMENSIONS

Kitchen	1.85m x 4.47m	6' 1" x 14' 8"
Living/Dining	2.79m x 4.48m	9' 2" x 14' 8"
Master Bedroom	3.79m x 3.11m	12' 5" x 10' 2"
Bedroom 2	2.79m x 3.29m	9' 2" x 10' 10"
Terrace	4.35m x 2.20m	14' 3" x 7' 2"

KEY

- ◄► Measurement Points
- W Wardrobe
- C Cupboard
- U Utility Cupboard

Floorplans shown for Union Walk are for approximate measurements only. Exact layouts and sizes may vary. All measurements may vary within a tolerance of 5% and are to the maximum room dimensions. The dimensions are not intended to be used for carpet sizes, appliance sizes or items of furniture. Furniture layouts are indicative only. Kitchen layout indicative only. Please ask Sales Executive for further information.



AT SOUTHALL
WATERSIDE

Bravey House



CLARION
HOUSING

BRAVEY HOUSE

2 BEDROOM APARTMENT

APARTMENTS

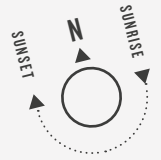
F1-05, F2-05, F3-05,
F4-05 & F5-05

TOTAL AREA

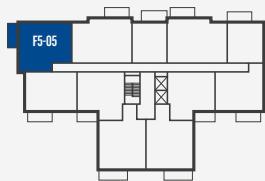
61.5 SQ M 662.4 SQ FT

BALCONY AREA

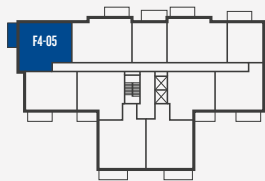
6.0 SQ M 65.2 SQ FT



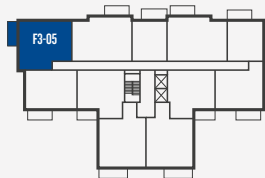
FIFTH FLOOR



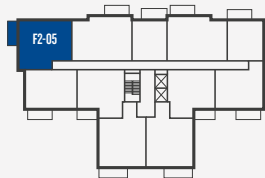
FOURTH FLOOR



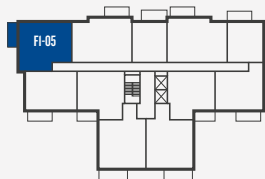
THIRD FLOOR



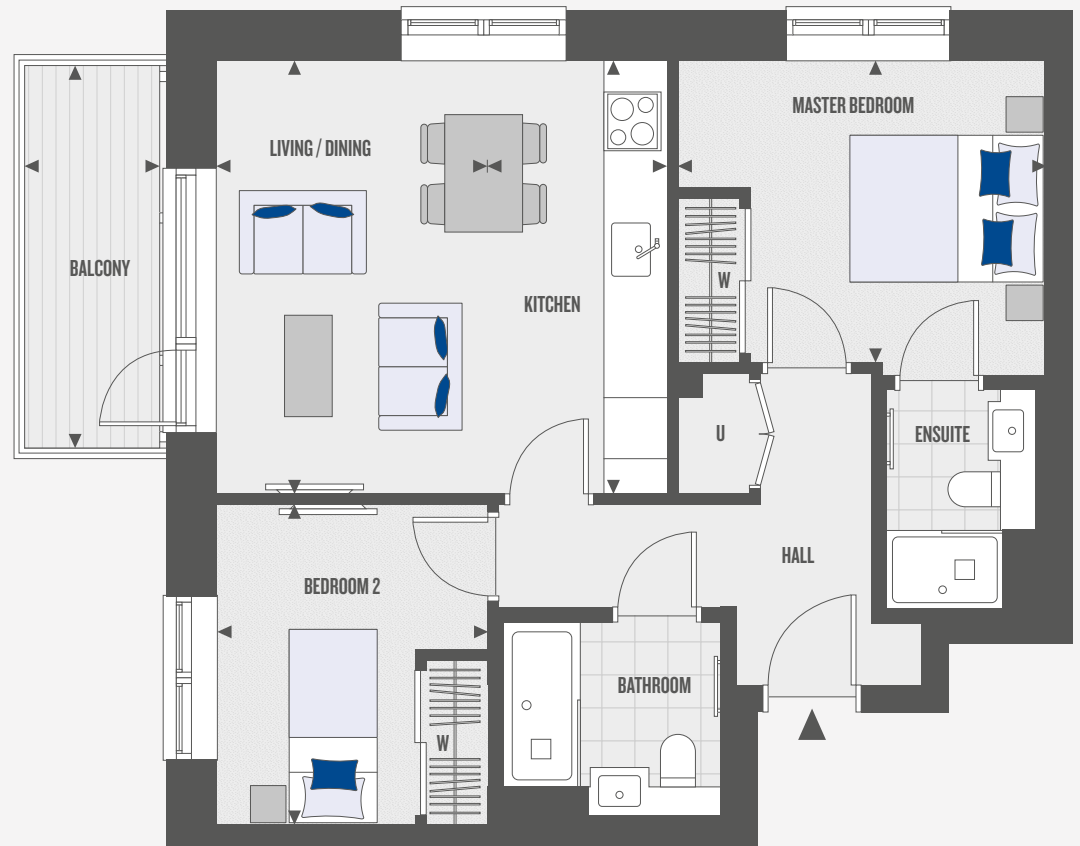
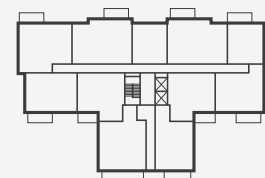
SECOND FLOOR



FIRST FLOOR



GROUND FLOOR



ROOM DIMENSIONS

Kitchen	1.85m x 4.47m	6' 1" x 14' 8"
Living/Dining	2.79m x 4.48m	9' 2" x 14' 8"
Master Bedroom	3.79m x 3.11m	12' 5" x 10' 2"
Bedroom 2	2.79m x 3.29m	9' 2" x 10' 10"
Balcony	4.04m x 1.50m	13' 3" x 4' 11"

KEY

- ◄ ► Measurement Points
- W Wardrobe
- C Cupboard
- U Utility Cupboard

Floorplans shown for Union Walk are for approximate measurements only. Exact layouts and sizes may vary. All measurements may vary within a tolerance of 5% and are to the maximum room dimensions. The dimensions are not intended to be used for carpet sizes, appliance sizes or items of furniture. Furniture layouts are indicative only. Kitchen layout indicative only. Please ask Sales Executive for further information.



AT SOUTHALL
WATERSIDE

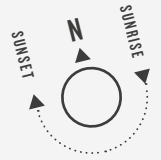
Bravey House



CLARION
HOUSING

BRAVEY HOUSE

2 BEDROOM APARTMENT



APARTMENT

FG-02

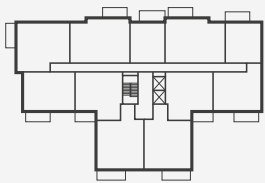
TOTAL AREA

65.2 SQ M 702.3 SQ FT

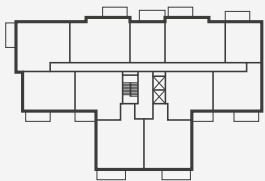
TERRACE AREA

11.1 SQ M 119.3 SQ FT

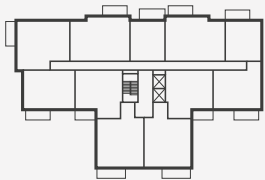
FIFTH FLOOR



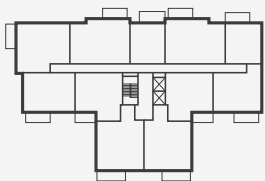
FOURTH FLOOR



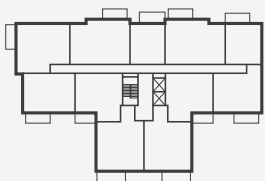
THIRD FLOOR



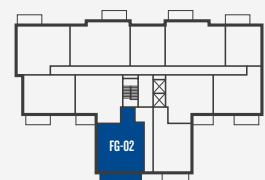
SECOND FLOOR



FIRST FLOOR



GROUND FLOOR



ROOM DIMENSIONS

Kitchen	3.14m x 2.46m	10' 3" x 8' 0"
Living/Dining	4.33m x 2.50m	14' 2" x 8' 2"
Master Bedroom	3.14m x 3.70m	10' 3" x 12' 1"
Bedroom 2	3.21m x 2.75m	10' 6" x 9' 0"
Terrace	6.17m x 1.81m	20' 2" x 5' 11"

KEY

- ◀▶ Measurement Points
- W Wardrobe
- C Cupboard
- U Utility Cupboard

Floorplans shown for Union Walk are for approximate measurements only. Exact layouts and sizes may vary. All measurements may vary within a tolerance of 5% and are to the maximum room dimensions. The dimensions are not intended to be used for carpet sizes, appliance sizes or items of furniture. Furniture layouts are indicative only. Kitchen layout indicative only. Please ask Sales Executive for further information.



AT SOUTHALL
WATERSIDE

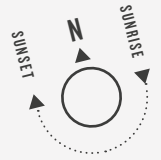
Bravey House



CLARION
HOUSING

BRAVEY HOUSE

2 BEDROOM APARTMENT



APARTMENTS

F1-01*, F1-02, F2-01*, F2-02,
F3-01*, F3-02, F4-01*, F4-02,
F5-01* & F5-02

TOTAL AREA

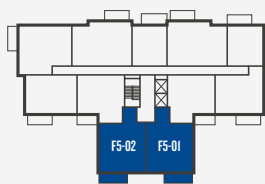
65.2 SQ M 702.3 SQ FT

BALCONY AREA

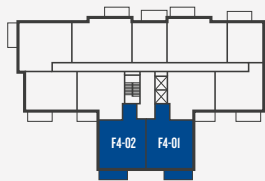
7.0 SQ M 75.3 SQ FT

*PLOTS ARE HANDED

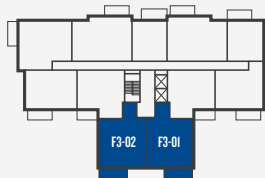
FIFTH FLOOR



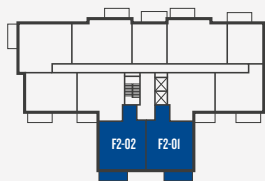
FOURTH FLOOR



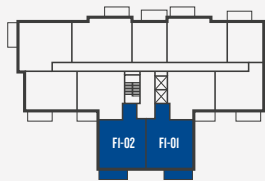
THIRD FLOOR



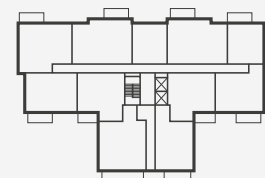
SECOND FLOOR



FIRST FLOOR



GROUND FLOOR



ROOM DIMENSIONS

Kitchen	3.14m x 2.46m	10' 3" x 8' 0"
Living/Dining	4.33m x 2.50m	14' 2" x 8' 2"
Master Bedroom	3.14m x 3.70m	10' 3" x 12' 1"
Bedroom 2	3.21m x 2.75m	10' 6" x 9' 0"
Balcony	4.72m x 1.50m	15' 5" x 4' 11"

KEY

- ◀▶ Measurement Points
- W Wardrobe
- C Cupboard
- U Utility Cupboard

Floorplans shown for Union Walk are for approximate measurements only. Exact layouts and sizes may vary. All measurements may vary within a tolerance of 5% and are to the maximum room dimensions. The dimensions are not intended to be used for carpet sizes, appliance sizes or items of furniture. Furniture layouts are indicative only. Kitchen layout indicative only. Please ask Sales Executive for further information.



AT SOUTHALL
WATERSIDE

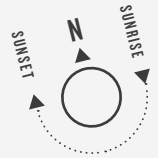
Bravey House



CLARION
HOUSING

BRAVEY HOUSE

2 BEDROOM APARTMENT



APARTMENTS

FG-06 & FG-07*

TOTAL AREA

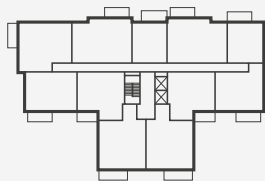
66.4 SQ M 714.7 SQ FT

TERRACE AREA

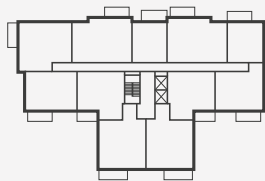
7.9 SQ M 85.0 SQ FT

*PLOT IS HANDED

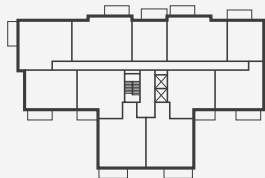
FIFTH FLOOR



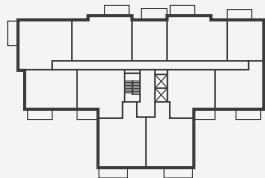
FOURTH FLOOR



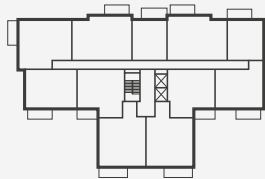
THIRD FLOOR



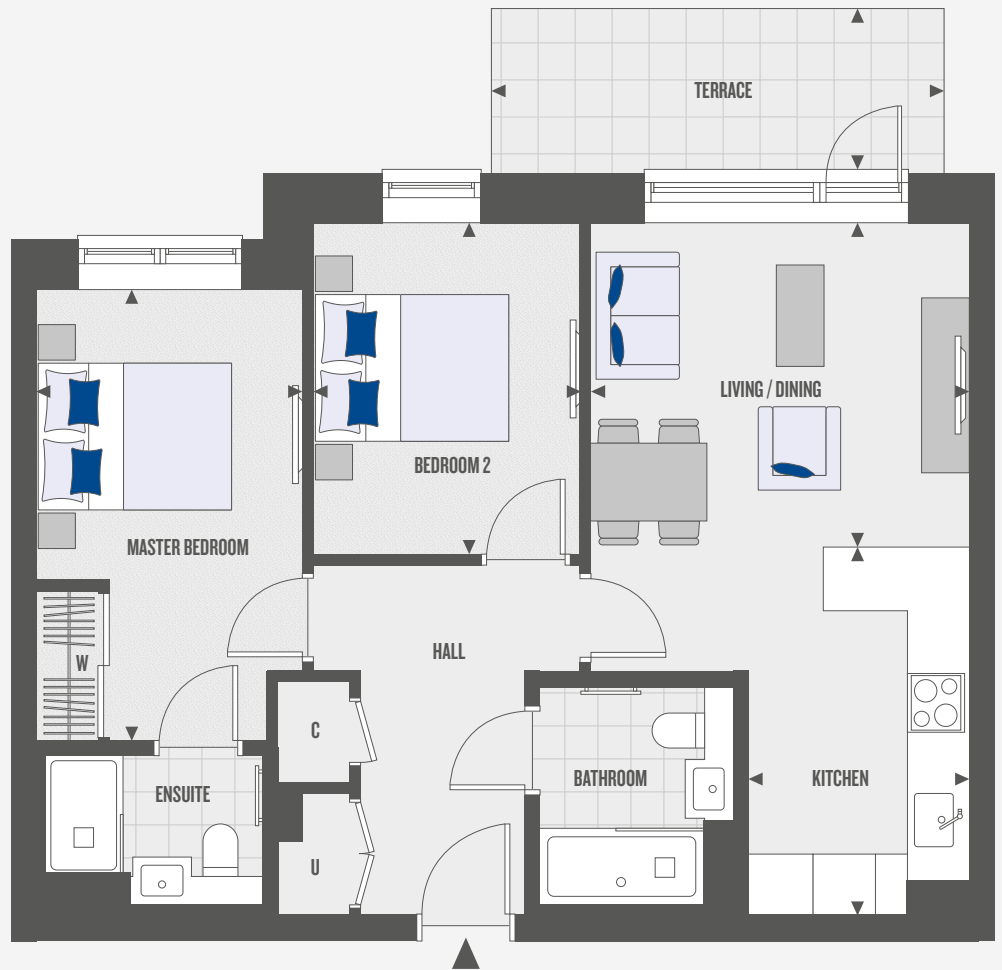
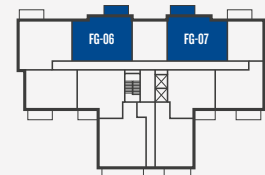
SECOND FLOOR



FIRST FLOOR



GROUND FLOOR



ROOM DIMENSIONS

Kitchen	2.29m x 3.77m	7' 6" x 12' 4"
Living/Dining	3.91m x 3.33m	12' 10" x 10' 11"
Master Bedroom	2.75m x 4.65m	9' 0" x 15' 3"
Bedroom 2	2.75m x 3.41m	9' 0" x 11' 2"
Terrace	4.65m x 1.70m	15' 3" x 5' 7"

KEY

- ◄► Measurement Points
- W Wardrobe
- C Cupboard
- U Utility Cupboard

Floorplans shown for Union Walk are for approximate measurements only. Exact layouts and sizes may vary. All measurements may vary within a tolerance of 5% and are to the maximum room dimensions. The dimensions are not intended to be used for carpet sizes, appliance sizes or items of furniture. Furniture layouts are indicative only. Kitchen layout indicative only. Please ask Sales Executive for further information.



AT SOUTHALL
WATERSIDE

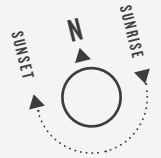
Bravey House



CLARION
HOUSING

BRAVEY HOUSE

2 BEDROOM APARTMENT



APARTMENTS

F1-06, F1-08*, F2-06, F2-08*,
F3-06, F3-08*, F4-06, F4-08*,
F5-06 & F5-08*

TOTAL AREA

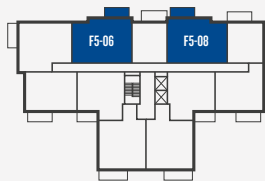
66.4 SQ M 714.7 SQ FT

BALCONY AREA

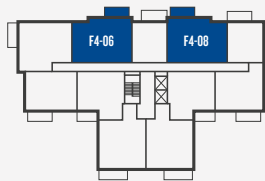
6.0 SQ M 65.2 SQ FT

*PLOTS ARE HANDED

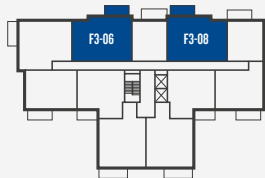
FIFTH FLOOR



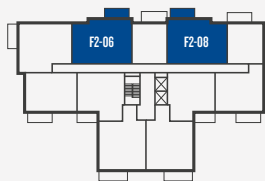
FOURTH FLOOR



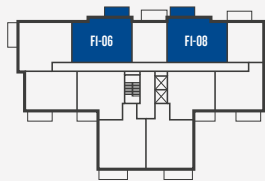
THIRD FLOOR



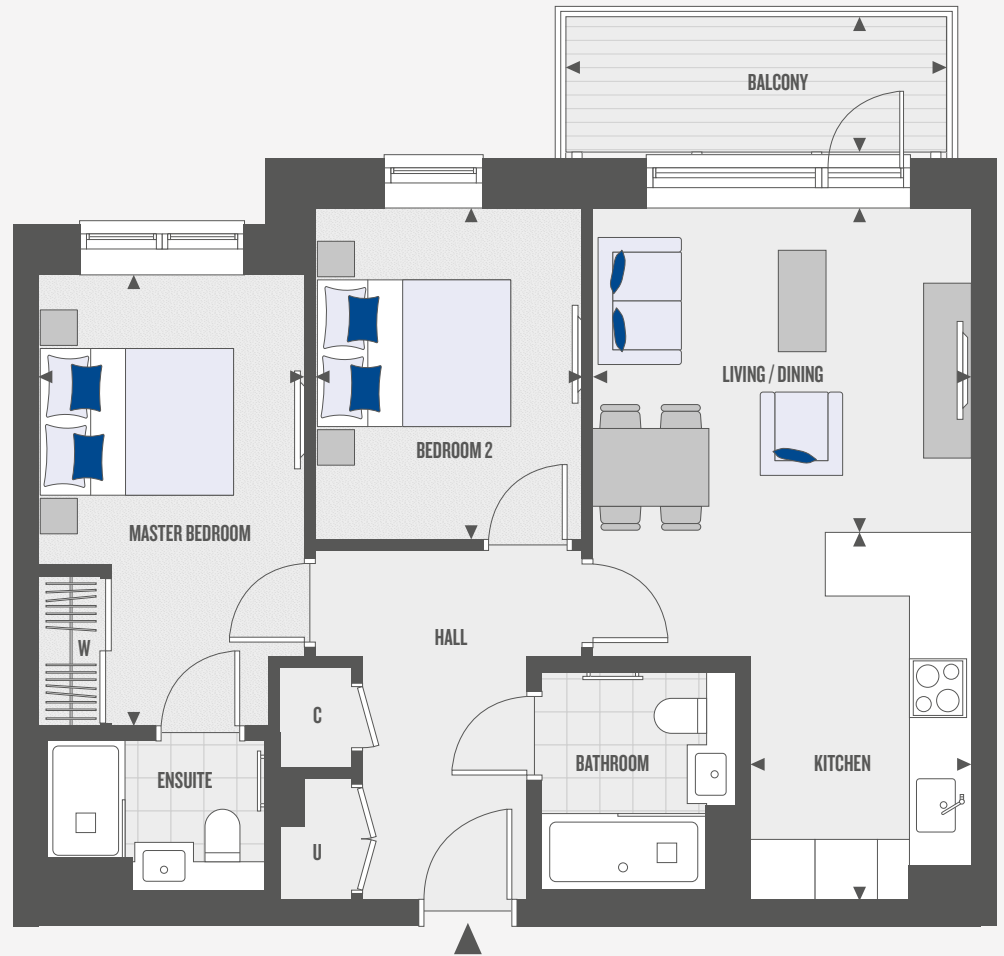
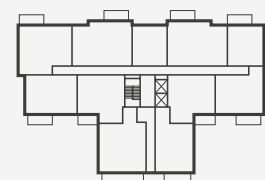
SECOND FLOOR



FIRST FLOOR



GROUND FLOOR



ROOM DIMENSIONS

Kitchen	2.29m x 3.77m	7' 6" x 12' 4"
Living/Dining	3.91m x 3.33m	12' 10" x 10' 11"
Master Bedroom	2.75m x 4.65m	9' 0" x 15' 3"
Bedroom 2	2.75m x 3.41m	9' 0" x 11' 2"
Balcony	4.04m x 1.50m	13' 3" x 4' 11"

KEY

- ◄► Measurement Points
- W Wardrobe
- C Cupboard
- U Utility Cupboard

Floorplans shown for Union Walk are for approximate measurements only. Exact layouts and sizes may vary. All measurements may vary within a tolerance of 5% and are to the maximum room dimensions. The dimensions are not intended to be used for carpet sizes, appliance sizes or items of furniture. Furniture layouts are indicative only. Kitchen layout indicative only. Please ask Sales Executive for further information.