

# RIDGEWAY VIEWS NW7



Address:  
**The Ridgeway,  
Mill Hill, London,  
NW7 1ST**



Bedrooms:  
**2 bedroom  
Apartments**



Prices from:  
**£647,500 to £650,00**



Service Charge:  
**£272 pcm**

Set within 47 acres, this beautiful collection of high quality, energy-efficient homes is located within the Mill Hill conservation area offering stunning views across the rolling green fields of Totteridge Valley.

Take advantage of a dedicated concierge, residents' gym, proposed café and an abundance of green open space within this pet-friendly development – all just 30 minutes from central London.

Get in touch for more information:

**0344 748 0056**

[ridgewayviews@site-sales.co.uk](mailto:ridgewayviews@site-sales.co.uk)  
[site-sales.co.uk/ridgewayviews](http://site-sales.co.uk/ridgewayviews)

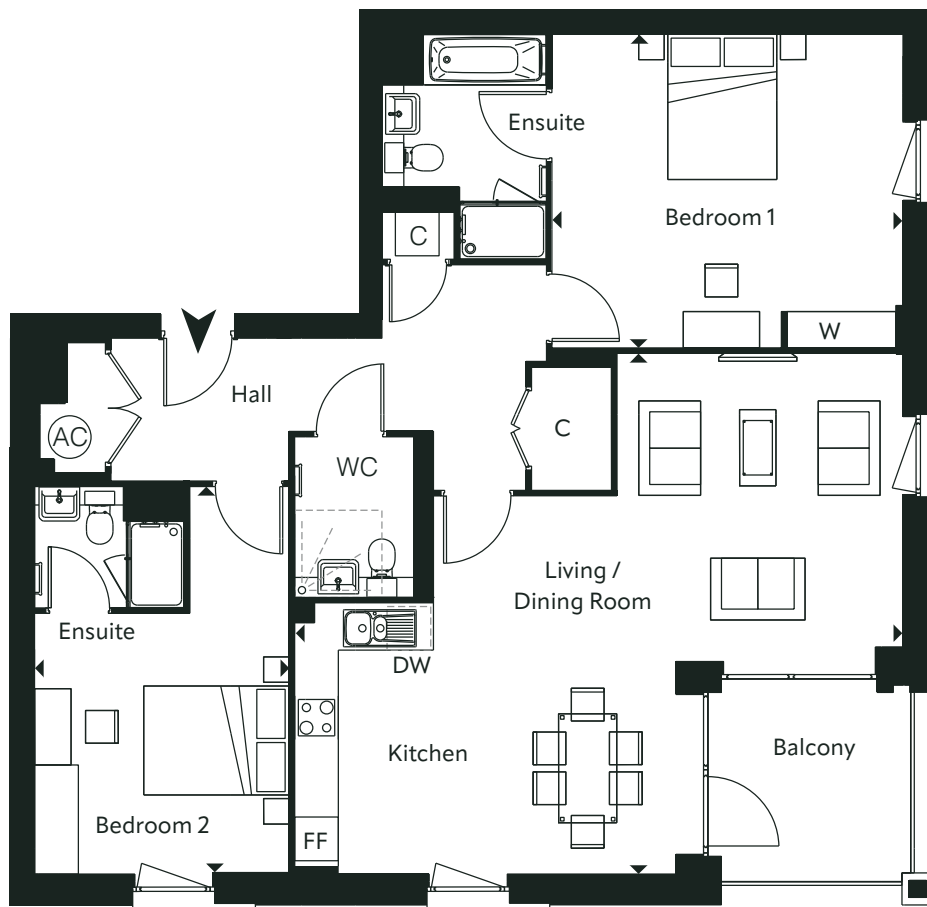


**Innisfree**

T&CS: Prices correct at the time of going to print. April 2023. Computer generated imagery is for indicative purposes only. Please speak to a sales consultant for more information.

## PLOTS 406, 410 & 411\*

\*Plot 411 is handed from the plan drawn



### Dimensions

	Total Area: 110 SQM		1184 SQ/FT	
	Length	Width	Length	Width
Living / Dining / Kitchen	8.33m	7.14m	27' 4"	23' 5"
Bedroom 1	4.80m	4.31m	15' 9"	14' 2"
Bedroom 2	5.29m	3.47m	17' 4"	11' 5"



KEY: FF - SPACE FOR FRIDGE / FREEZER DW - SPACE FOR DISH WASHER C - CUPBOARD W - WARDROBE AC - AIRING CUPBOARD

Point from which maximum dimensions are measured. Dimensions are intended for guidance only. The developer reserves the right to vary as necessary to complete works. All measurements and areas may vary by approximately 5%. We operate a policy of continuous product development and features may, therefore, vary from time to time. This information does not constitute a contract, part of contract or warranty. They are not intended to be used for carpet sizes, appliance size or items of furniture. All details correct at time of going to print. Plans and dimensions are indicative only and representative of build product.



SITESALES

Innisfree