

CROMWELL FIELDS

Upwood Road, Bury, Cambridgeshire PE26 2SF

3 bedroom house with private garden and driveway parking



CROMWELL FIELDS

Upwood Road, Bury, Cambridgeshire PE26 2SF

Stonewater, in partnership with Larkfleet Homes, is proud to present a collection of **two and three bedroom houses for shared ownership** at the popular Cromwell Fields development.

Five 3 bedroom houses and 7 two bedroom houses are available, all benefiting from a stylish contemporary fitted kitchen and bathroom. Each property also has a useful downstairs cloakroom with WC, and comes with allocated parking and a private rear garden.

Surrounded by the beautiful Huntingdonshire countryside, the small village of Bury has lots of Olde World charm with its 17th-century half -timbered thatched and tiled cottages and its convenience store catering for all the essentials. The neighbouring market town of Ramsey provides more retail, dining and entertainment options: independent shops and businesses include a butcher, a greengrocer, a florist and a gym. Ramsay is also home to a selection of supermarkets and larger stores, as well as a popular farm shop complete with onsite café and restaurant.

Bury and Ramsey are a close community with plenty of activities on offer ranging from nursery groups, youth groups and yoga to keep-fit. There are several good schools in the area including The Ashbeach Primary School, Bury C of E Primary School, Ramsey Junior School and Abbey College.

A new home at Cromwell Fields offers the ideal combination of rural village lifestyle within easy reach of the area's larger towns or cities. Bury's proximity to the A1 and A14 trunk routes means Cambridge, Peterborough, Huntingdon, Corby and Kettering are all easy accessible. Huntingdon railway station is just 10 miles away, providing direct access into London Kings Cross with average journey times of just over an hour.



TRAVEL DISTANCES

- Tesco Superstore 1.6 miles
- Huntingdon 10 miles
- St Ives 10.5 miles
- Peterborough 17 miles
- St Neots 19.8 miles
- Cambridge 25.6 miles

SPECIFICATION (subject to change)

Kitchen

Kitchen Cabinets – Hacienda range - Platinum
Kitchen Handles – Stainless Steel Barrel D Handle
Kitchen Floor – Atisan Aquitine
Traffic - White Matt (R10) | B0038736
Kitchen work top: Alaska

Bathroom

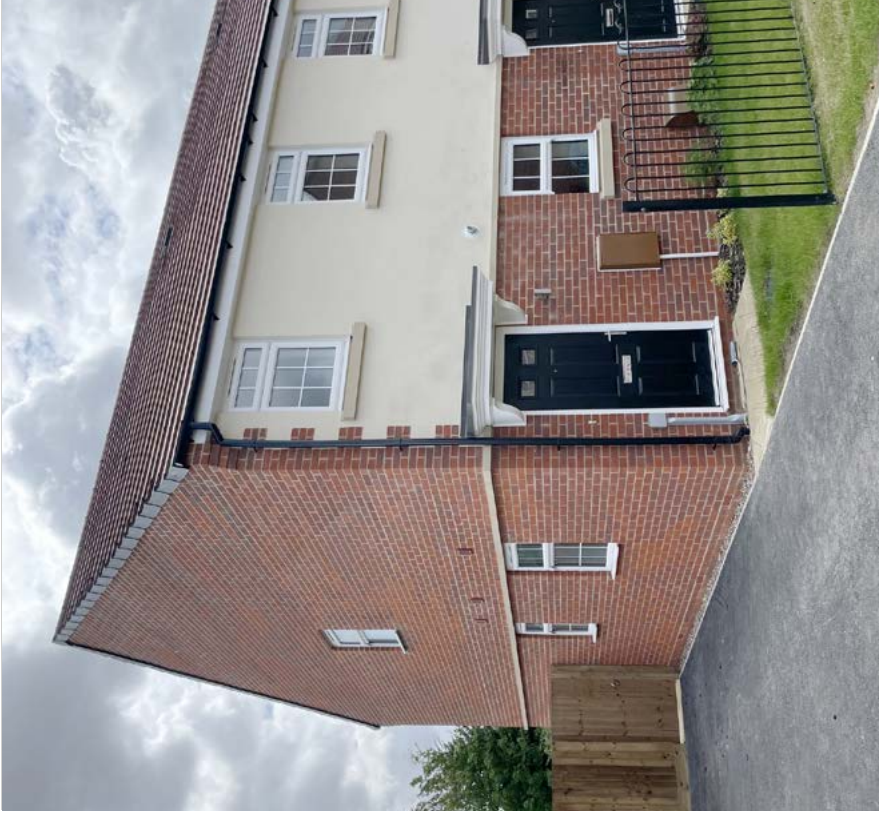
Bathroom & WC Floor – Charisma Sundance
Bathroom Tiles White Line Décor | B0039923

SITE PLAN



PLOT 82

123 Longland Crescent, Bury, Cambridgeshire PE26 2SF



3 bedroom end-of-terrace house

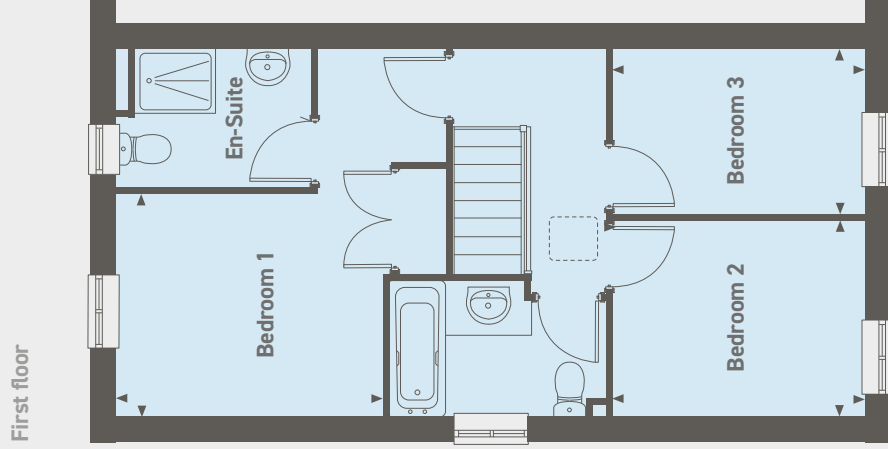
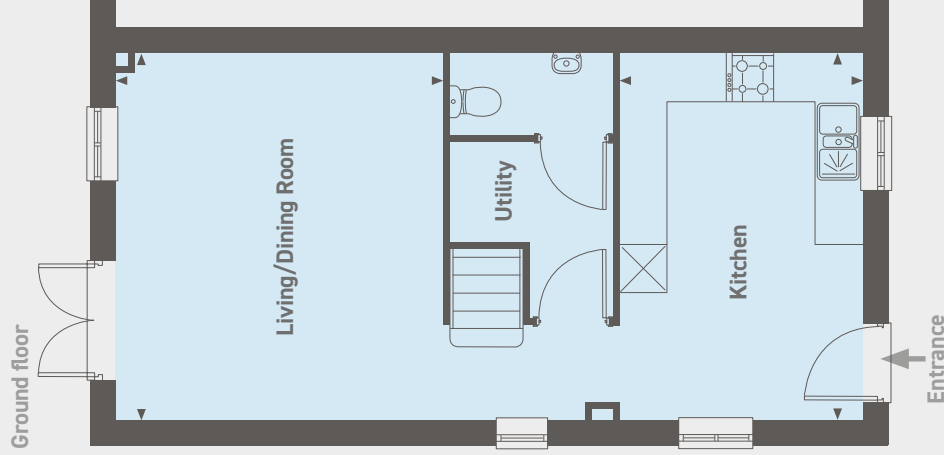
Allocated parking
Rear garden
Downstairs WC

£114,000 for a 40% share

Open Market Value: **£285,000**

Monthly Rent: **£391.88**

Service Charge: **£27.02** per month



Ground floor

Kitchen
4.63m x 3.08m (15'2" x 10'1")
Living/Dining Room
4.63m x 3.84m (15'2" x 12'5")

First floor

Bedroom 1
2.82m x 3.36m (9'3" x 11'0")
Bedroom 2
2.48m x 3.19m (8'1" x 10'5")
Bedroom 3
2.08m x 3.19m (6'9" x 10'5")

Please note that all sales particulars and images are for marketing and illustrative purposes only. Plans may contain elements which are not present upon the final completion of the property. Specification subject to change. All room dimensions are approximate and are for general guidance only.

CROMWELL FIELDS

Upwood Road, Bury, Cambridgeshire PE26 2SF

Please note the most up-to-date availability can be found on our website www.stonewaterhomes.co.uk.

Alternatively call the New Homes team to find out more on 02380 658 836

Further details are available upon request.

[FIND OUT ABOUT SHARED OWNERSHIP](#)

Please note that all sales particulars and images are for marketing and illustrative purposes only. Plans, computer generated images and photos may contain elements which are not present upon the final completion of the property.

