



THE  
**ANTHURIUM**  
COLLECTION

1/2 BEDROOM APARTMENTS

PLOTS A-2.1, A-2.7 & A-3.1

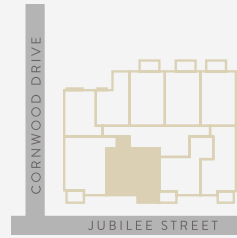
AT

BOTANICAL  
LOFTS



**Apartment A**  
**67.9 SQM / 233 SQM**  
**2 Bedrooms**  
**1 Bathroom**  
**1 Balcony**

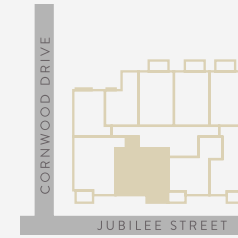
Second Floor



Lounge/Kitchen Dining Room	6.85m x 3.64m	22'6" x 11'11"
Bedroom 1	4.38m x 2.97m	14'4" x 9'9"
En Suite	1.82m x 1.28m	6'0" x 4'2"
Bedroom 2	4.39m x 2.20m	14'5" x 7'3"
Bathroom	2.24m x 1.97m	7'4" x 6'6"
Balcony	3.50m x 1.74m	11'6" x 5'8"

**Apartment A1**  
**68.4 SQM / 736 SQM**  
**2 Bedrooms**  
**1 Bathroom**  
**1 Balcony**

Third Floor



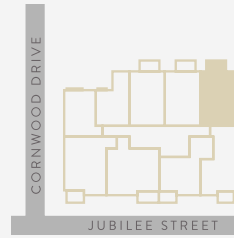
Lounge/Kitchen Dining Room	6.88m x 3.63m	22'7" x 11'11"
Bedroom 1	4.38m x 2.98m	14'4" x 9'9"
En Suite	1.83m x 1.30m	6'0" x 4'3"
Bedroom 2	4.38m x 2.18m	14'4" x 7'2"
Bathroom	2.26m x 2.01m	7'5" x 6'7"
Balcony	3.44m x 1.67m	11'3" x 5'6"



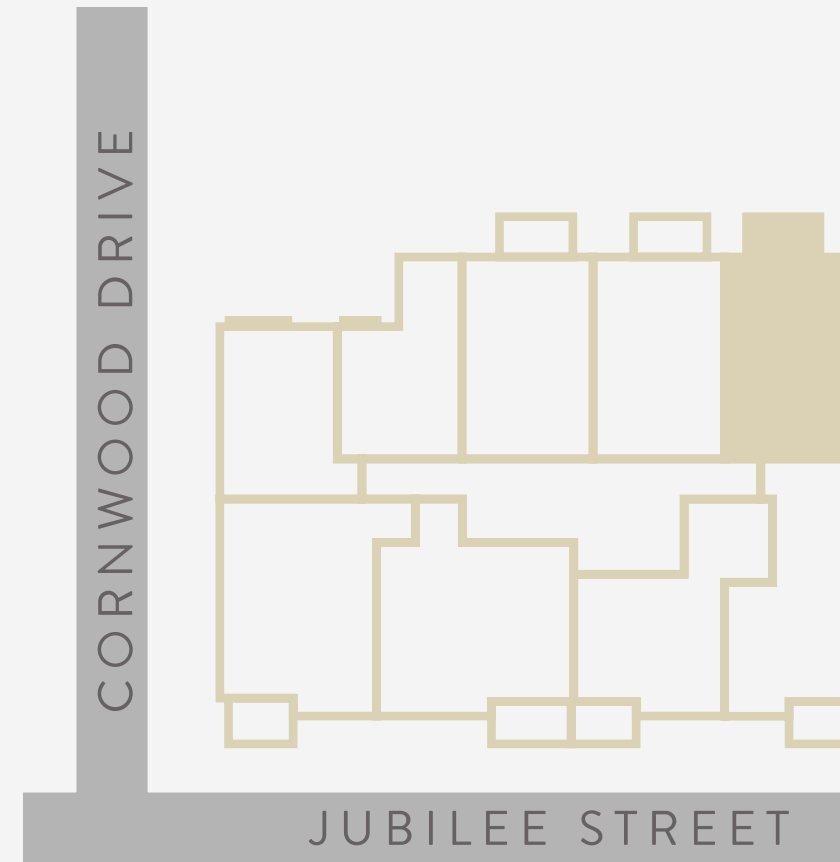
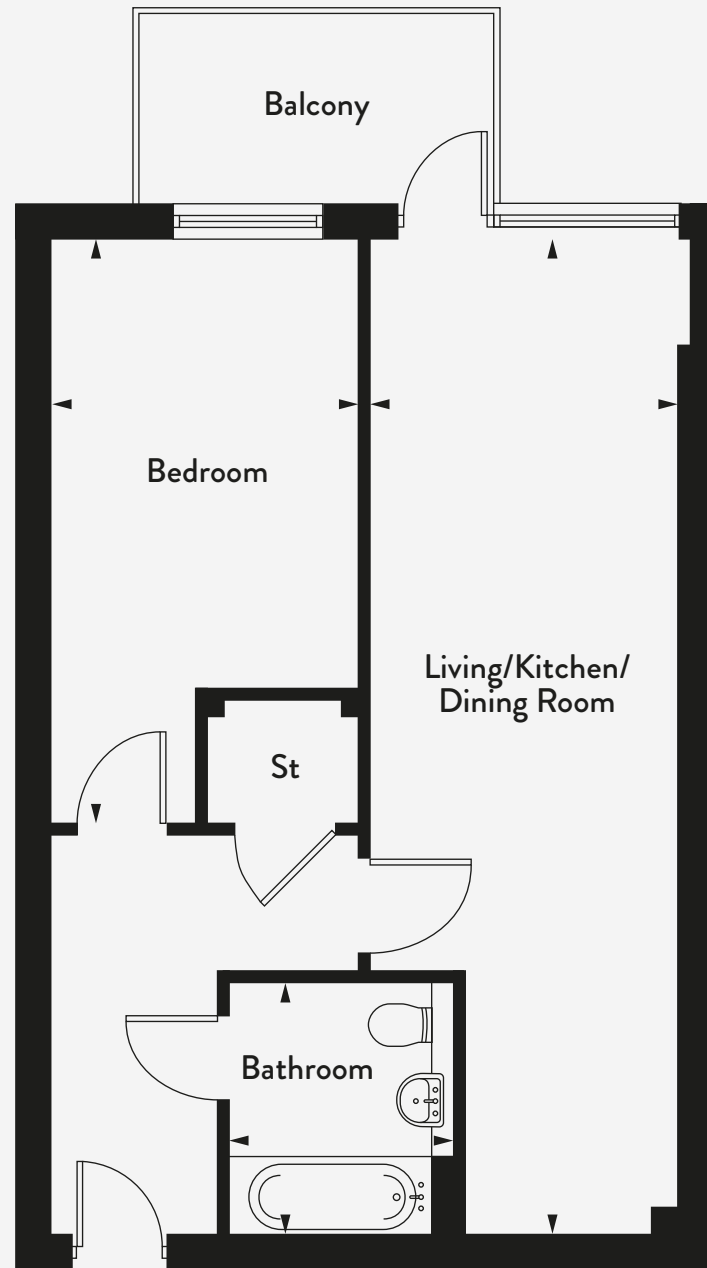
**Apartment B**  
**50.1 SQM / 539 SQM**  
**1 Bedrooms**  
**1 Bathroom**  
**1 Balcony**

Second Floor

- 5
- 4
- 3
- 2
- 1
- G



Lounge/Kitchen Dining Room	8.83m x 2.74m	29'0" x 9'0"
Bedroom	5.18m x 2.73m	17'0" x 8'11"
Bathroom	2.23m x 2.00m	7'4" x 6'7"
Balcony	3.15m x 1.70m	11'7" x 9'0"



**BOTANICAL LOFTS**

THE ANTHURIUM COLLECTION AT BOTANICAL LOFTS OFFERS JUST THREE ONE AND TWO BEDROOM LOFT STYLE APARTMENTS THAT HONOUR STEPNEY'S RICH HERITAGE, INSPIRED BY THE STYLE OF THE SURROUNDING HISTORIC RED BRICK BUILDINGS.

Located on the second and third floor, with full height metal industrial style windows, each well-specified space is carefully considered with large open-plan living/kitchen/dining rooms that run the whole length of the apartment, lead on to full-width private balconies. Each apartment also benefits from extensive storage space and the two-bedroom apartments also benefit from en-suites.

The Anthurium Collection is perfectly positioned to enjoy all that vibrant Stepney has to offer – especially its eclectic mix of speciality stores, bars, traditional pubs and eateries, from cosy cafés to sophisticated dining. Under two miles away is Victoria Park, East London's most beautiful park, while for those looking for a more energetic workout, Pilates studios, gyms and swimming pools are all nearby.

GATEWAY HOUSING HAS BEEN  
SUPPORTING COMMUNITIES TO THRIVE  
SINCE 1926



Gateway Housing Association is an ambitious housing association with 3,000 homes in the heart of London's East End.

We operate mostly in the London Borough of Tower Hamlets but we have some properties in Hackney and Newham. These are made up of social rented homes, shared ownership homes, outright sale homes and homes exclusively for rent and sale for the over 55's.

Developing new homes is a priority for us. Our focus is on 'supporting communities to thrive'. That's why we invest so much in community projects for resident groups and young people each year, making us so much more than a landlord.



WE STRIVE TO MEET OUR PURPOSE:

“  
TO PROVIDE GREAT HOMES FOR PEOPLE  
IN EAST LONDON AND TO SUPPORT  
COMMUNITIES TO THRIVE.  
”





# SPECIFICATION

---

## KITCHEN

- TEL Kitchens handleless perfect matt finish units
  - Bosch integrated oven
  - Bosch 600mm Ceramic Hob
  - Zanussi integrated hood
  - Zanussi Integrated Dishwasher
  - Zanussi stand alone washer/Dryer in store cupboard
  - Quartz worktop to match upstand
  - Glass splashback panel behind hob
  - Blanco stainless steel sink
  - Blanco Chrome trim single lever mixer tap
  - LED strip fitted to underside of wall units
  - Lifestyle Chelsea Traditional Oak flooring
- 

## BATHROOM & EN-SUITES

- Ideal Standard back-to-wall toilet with soft close lid
  - Ideal Standard Concept sphere basin with Hansgrohe mixer tap
  - Concept rectangular bath (where applicable)
  - Merlyn double panel hinged bath screen (where applicable)
  - Hansgrohe bath mixer tap (where applicable)
  - Hansgrohe Croma shower kit and Merlyn sliding shower screen (where applicable)
  - Egger grey-beige gladstone oak vanity top
  - Energy grey concrete effect porcelain floor tiles
  - Heated towel rail
  - Draks bespoke mirror unit provided to main bathroom
  - Shaver socket
- 

## INTERIOR FINISHES

- Lifestyle Chelsea Traditional Oak to all living, kitchen and hallway areas
  - Cormer oaklands carpet to bedrooms
  - Fitted wardrobes with mirror doors, full length shelf and hanging rail
  - Walls, ceilings and joinery finished in Dulux trade white
  - Stainless steel door hardware
- 

## HEATING, ELECTRICAL & LIGHTING

- White finish sockets and switches
- BT master point in each unit
- Multimedia including TV point in each unit
- Light to balconies/terraces where applicable

