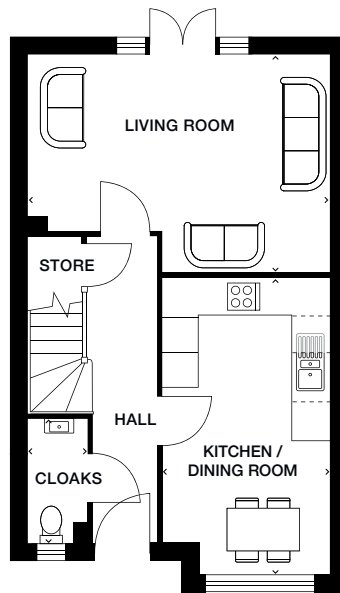


OSBOURNE

4 bedroom home

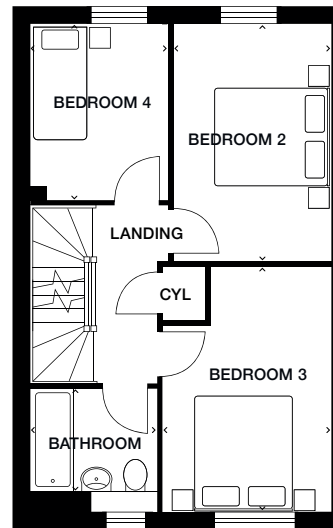


Ground floor

Kitchen/Dining Room 2755mm x 4860mm (max) 9'0" x 15'11" (max)

Living Room 4910mm x 3560mm (max) 16'1" x 11'8" (max)

Cloaks 920mm x 1970mm 3'0" x 6'5"



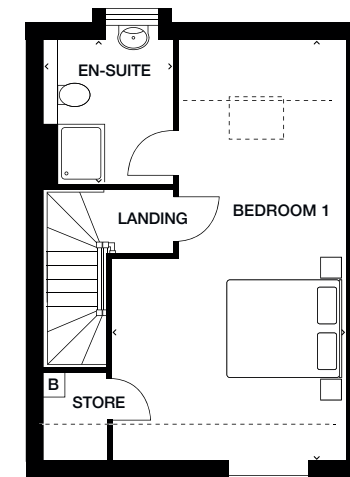
First floor

Bedroom 2 2570mm x 3875mm 8'5" x 12'8"

Bedroom 3 2760mm x 3980mm (max) 9'0" x 13'0" (max)

Bedroom 4/Study 2245mm x 1975mm 7'4"x 6'5"

Bathroom 2060mm x 1970mm 6'9" x 6'5"



Second floor

Bedroom 1 3805mm x 6960mm (max) 12'5" x 22'10" (max)

En-suite 2120mm x 2370mm 6'11" x 7'9"