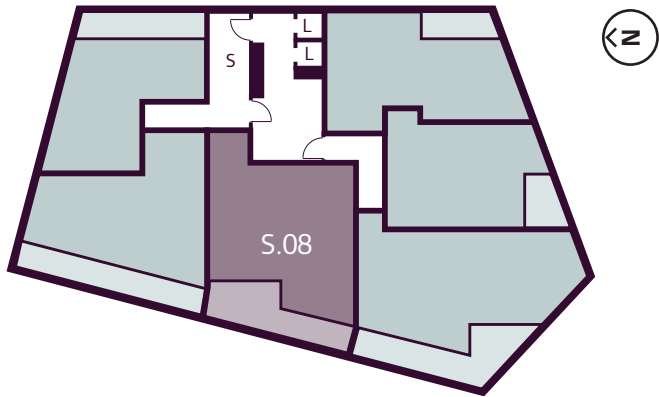


# APARTMENT S.08

## NO.1 CREEKSIDE SE8

### 2 BEDROOMS

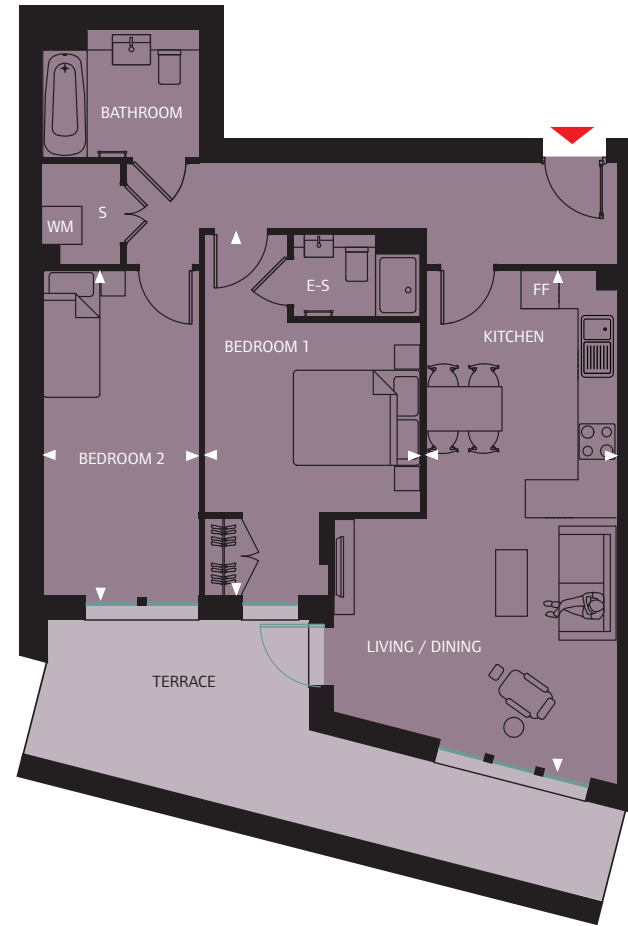
### FLOOR 2 OF 8



- L Lift
- S Stairs

TOTAL:	77.00 Sq M		829 Sq Ft
Kitchen / Living / Dining	3.04m x	7.88m	9'11" x 25'10"
Bedroom 1	3.43m x	5.72m	11'2" x 18'9"
Bedroom 2	2.50m x	5.15m	8'2" x 16'10"

While these particulars and plans are prepared with all due care for the convenience of intending purchasers, the information contained herein is a preliminary guide only. Neither the vendors, nor their agents or any person in their employ has any authority to make or give representation, warranty or guarantee (whether oral or written) in respect of, or in relation to, the development or any part thereof. Images shown are of CGIs of the scheme or of similar Lewisham Homes new build homes recently built. The company employs a policy of continuous improvement and it reserves the right to alter or amend the specification as necessary and without prior notice.



- FF Fridge / Freezer
- WM Washing Machine
- E-S En-Suite
- S Store

