

BOLLIN

Three bedroom semi-detached home with driveway



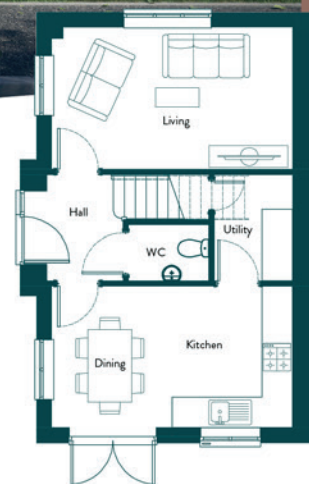
DESCRIPTION

Three-bedroom, semi-detached house with off-road parking and turfed front and back garden. The ground floor features a front hall and WC room, a spacious lounge with bay window, utility space, and a modern open plan kitchen and dining space. Patio doors leading to a turfed garden at the rear. Upstairs there's a spacious master bedroom with en-suite, two single bedrooms and a family bathroom.

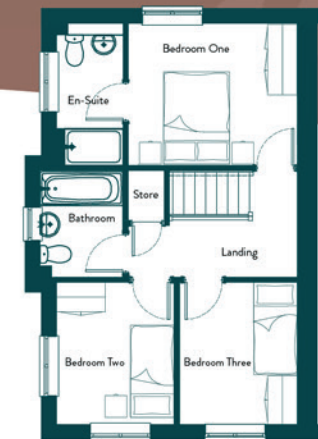
ROOM DIMENSIONS

ROOM DIMENSIONS	SIZE (ft)	SIZE (ft ²)	ROOM DIMENSIONS	SIZE (ft)	SIZE (ft ²)
Living	16' 2" X 9' 6"	155	Bedroom Three	9' 6" X 7' 10"	75
Kitchen/Dining	16' 2" X 9' 6"	155	Bathroom	7' 1" X 5' 6"	39
Utility	7' 1" X 5' 2"	37	En-suite	8' 9" X 4' 5"	38 max
Store (0.16m ² floor area above 1500mm)	3' 11" X 3' 0"	11	Store	3' 3" X 2' 4"	7
Bedroom One	11' 4" X 9' 6"	109			
Bedroom Two	9' 6" X 7' 10"	75			

TOTAL GROSS INTERNAL AREA 912 ft²



Ground Floor Plan



First Floor Plan

DISCLAIMER: This is an illustration of the proposed interior design layout at Bartle Fields and is subject to change.