

Carvers Meadow

The Daresbury 2 bedroom house

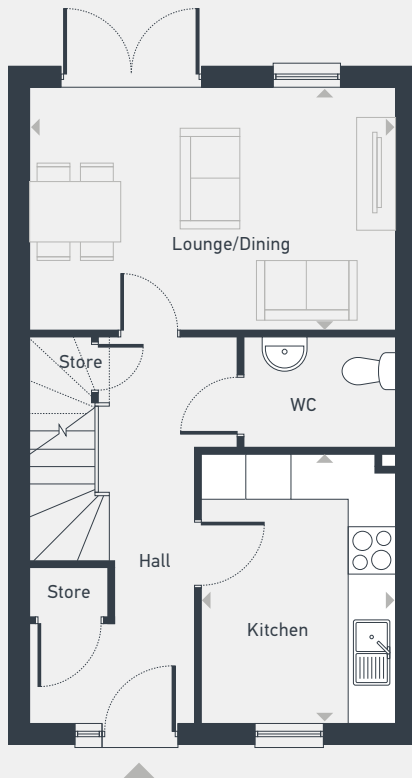


Carvers Meadow

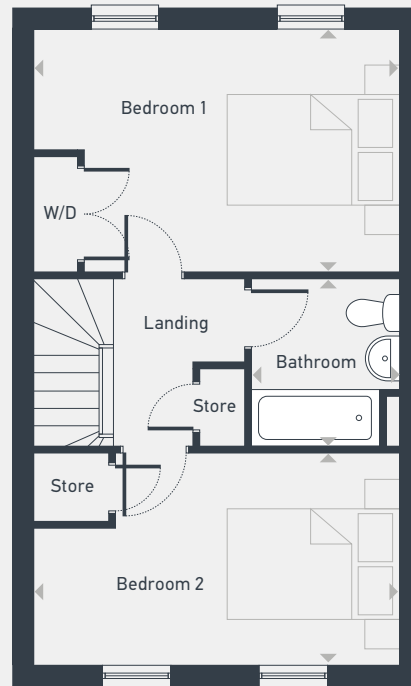
The Daresbury 2 bedroom house

Plots 72 & 74 — end-terrace
Plot 73 — mid-terrace
Plot 74 — handed

79 sq m / 847 sq ft



GROUND FLOOR



FIRST FLOOR

DIMENSIONS	m	ft
Lounge/Dining	4.80m x 3.08m	15'8" x 10'1"
Kitchen	3.48m x 2.52m	11'5" x 8'3"

DIMENSIONS	m	ft
Bedroom 1	4.80m x 3.08m	15'8" x 10'1"
Bedroom 2	4.80m x 2.73m	15'8" x 8'11"
Bathroom	2.20m x 1.95m	7'2" x 6'4"



01953 445 640 | sales@carversmeadow.co.uk | placesforpeople.co.uk/carversmeadow
Carvers Meadow, Carvers Lane, Attleborough, Norfolk NR17 1AB

Information correct as of August 2023

Please note: All CGIs, layouts and floor plans, configurations, maps and information are intended for guidance only and accuracy of this information cannot be relied upon by prospective purchasers who must make their own enquiries to satisfy themselves by inspection or otherwise as to the correct detail. Sizes and dimensions approximate and subject to change.