

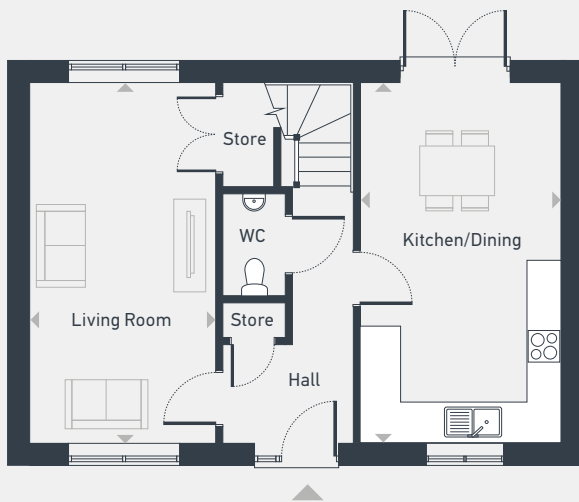


Carvers Meadow

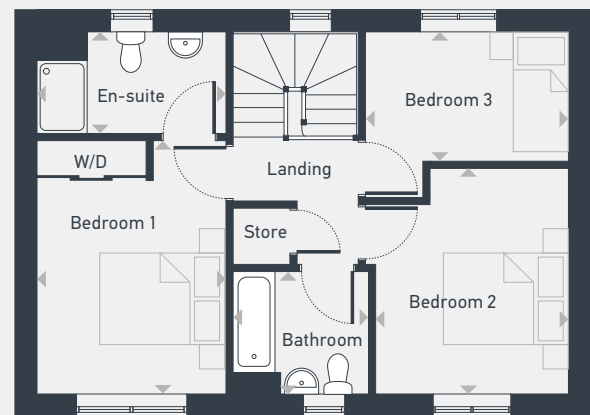
The Buckenham-A 3 bedroom house

Plots 92 & 93 — semi-detached
Plot 93 — handed

102 sq m / 1,100 sq ft



GROUND FLOOR



FIRST FLOOR

DIMENSIONS	m	ft
Kitchen/Dining	5.92m x 3.37m	19'4" x 11'1"
Living Room	5.92m x 3.06m	19'4" x 10'0"

DIMENSIONS	m	ft
Bedroom 1	4.22m x 3.06m	13'10" x 10'0"
En-suite	3.06m x 1.64m	10'0" x 5'5"
Bedroom 2	3.73m x 3.26m	12'2" x 10'8"
Bedroom 3	3.73m x 2.72m	12'2" x 8'11"
Bathroom	2.28m x 2.04m	7'5" x 6'7"



01953 445 640 | sales@carversmeadow.co.uk | placesforpeople.co.uk/carversmeadow
Carvers Meadow, Carvers Lane, Attleborough, Norfolk NR17 1AB

Information correct as of August 2023

Please note: All CGIs, layouts and floor plans, configurations, maps and information are intended for guidance only and accuracy of this information cannot be relied upon by prospective purchasers who must make their own enquiries to satisfy themselves by inspection or otherwise as to the correct detail. Sizes and dimensions approximate and subject to change.