



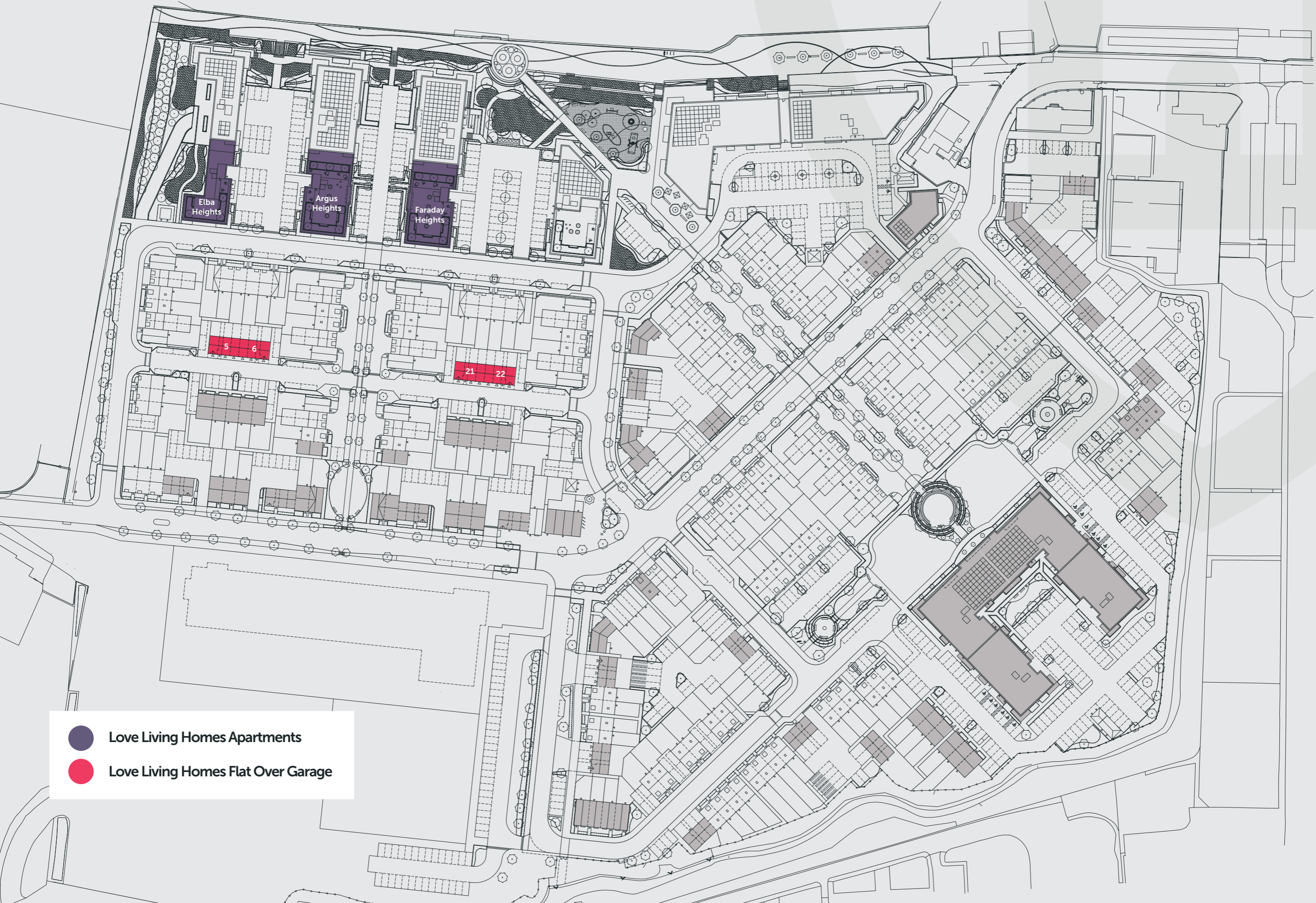
# CABLE WHARF

by

**love**livinghomes

**Flat over Garage**



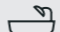
# Cable Wharf site plan

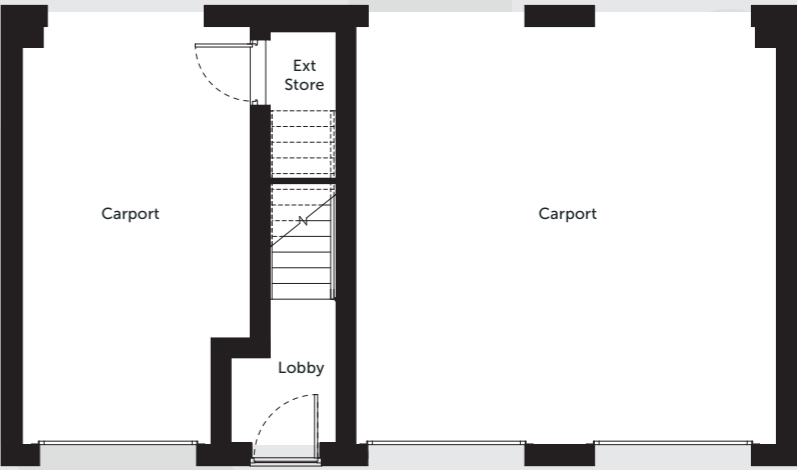


- Love Living Homes Apartments
- Love Living Homes Flat Over Garage

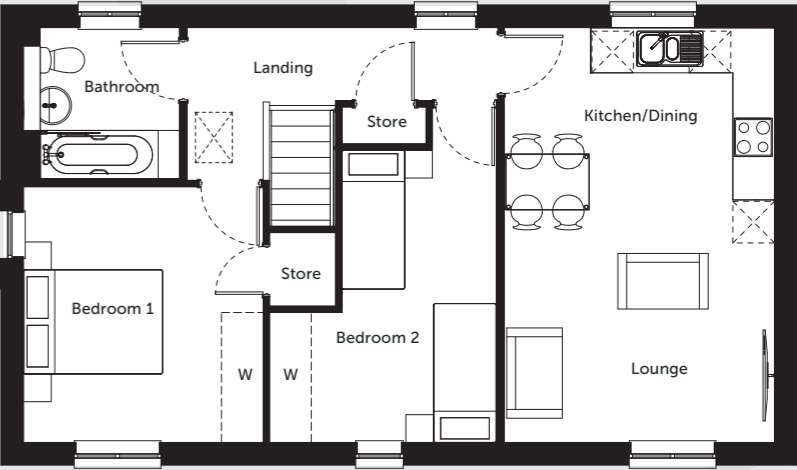


# Flat over Garage

-  71.2 sqm / 766 sqft
-  2 Bedroom
-  1 Bathroom



Ground Floor



First Floor

**DIMENSIONS**

**PLOTS**

**KITCHEN / DINING**

3928mm x 3011mm - 12'10" x 9'10"

**LOUNGE**

3928mm x 3011mm - 12'10" x 9'10"

**BATHROOM**

2304mm x 2239mm - 7'6" x 7'4"

**BEDROOM 1**

3722mm x 3490mm - 12'2" x 11'5"

**BEDROOM 2**

4248mm x 3292mm - 13'11" x 10'9"

5

6

21

22

# Specification

All our homes at Cable Wharf include generous specifications to make life as comfortable and convenient as can be.

## KITCHEN

- Contemporary Symphony grey kitchen units with Pearl Granite worktops
- Integrated fridge/freezer and dishwasher
- Integrated electric oven and hob
- Stainless steel splash back & canopy extractor fan
- Stainless steel sink and drainer

## BATHROOM

- Contemporary white bathroom suite with chrome fittings
- White gloss tiles
- Stone effect light grey vinyl flooring
- Shower over bath with glass screen
- Pedestal washbasin with mixer tap
- Chrome heated towel radiator

## INTERIOR & DECORATION

- Textured, light wood effect vinyl floorings to kitchen & hallways
- White emulsion to walls and ceilings and white satin to woodwork
- Durable neutral carpets to all bedrooms and living area
- High efficiency combi boiler
- Automatic room thermostat control
- TV / broadband connection points
- Built in storage solutions

## EXTERIOR

- Allocated parking
- Riverfront development

## WARRANTY

- All Love Living Homes are backed by a full 10-year NHBC warranty to provide peace of mind, and help you relax knowing that there's help if you need it!



Artistic impression. Elevation treatments are subject to change.

## Reserving your chosen plot

There's nothing more exciting than taking that first step onto the home ownership ladder. With generous specifications, make life comfortable and convenient in the beautiful Gravesham area. Love your new home at Cable Wharf with Love Living Homes.

To reserve your plot or for more information on the development, please contact our local agents:

 [buy@lovelivinghomes.co.uk](mailto:buy@lovelivinghomes.co.uk)  
07340 361424

Monson House, Monson Way,  
Tunbridge Wells, Kent TN1 1LQ  
[lovelivinghomes.co.uk](http://lovelivinghomes.co.uk)

