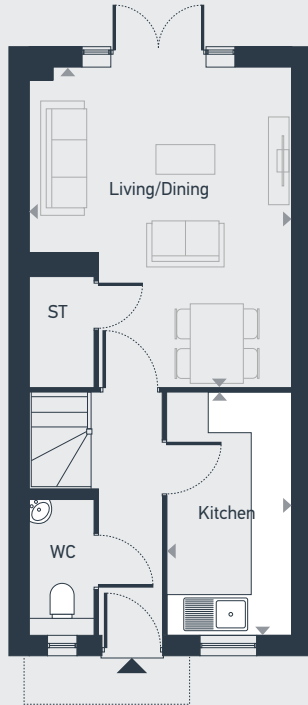


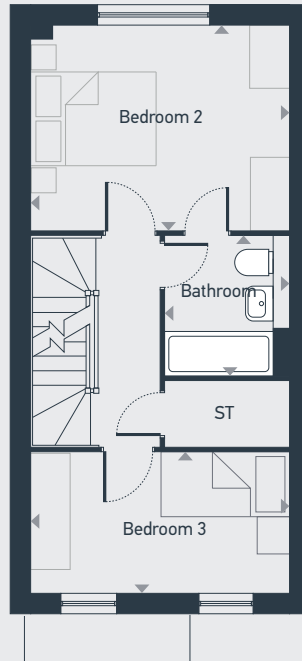
Corallion Heights

The Fletcher 3 bed house

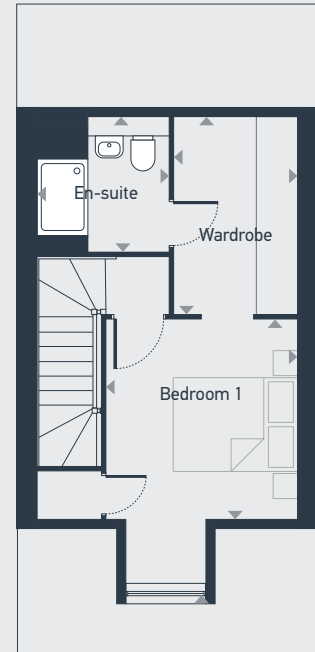
97.8 sq m / 1053 sq ft



GROUND FLOOR



FIRST FLOOR



SECOND FLOOR

DIMENSIONS	m	ft
Kitchen	3.7m x 1.9m	12'2" x 6'3"
Living/Dining	4.9m x 4.0m	16'2" x 13'1"
WC	2.1m x 1.0m	6'11" x 3'1"

	m	ft
Bedroom 2	4.0m x 3.2m	13'1" x 10'4"
Bedroom 3	4.0m x 2.2m	13'1" x 7'1"
Bathroom	2.2m x 1.9m	7'0" x 6'3"
Bedroom 1	4.1m x 3.0m	13'1" x 9'8"
Dressing Room	3.1m x 1.9m	10'1" x 6'3"
En-suite	2.1m x 2.0m	6'10" x 6'7"



0XXXX XXXXXX | placesforpeople.co.uk/corallionheights
Address

Please note: All layouts and floor plans, configurations, maps and information are intended for guidance only and accuracy of this information cannot be relied upon by prospective purchasers who must make their own enquiries to satisfy themselves by inspection or otherwise as to the correct detail. Sizes and dimensions approximate and subject to change.